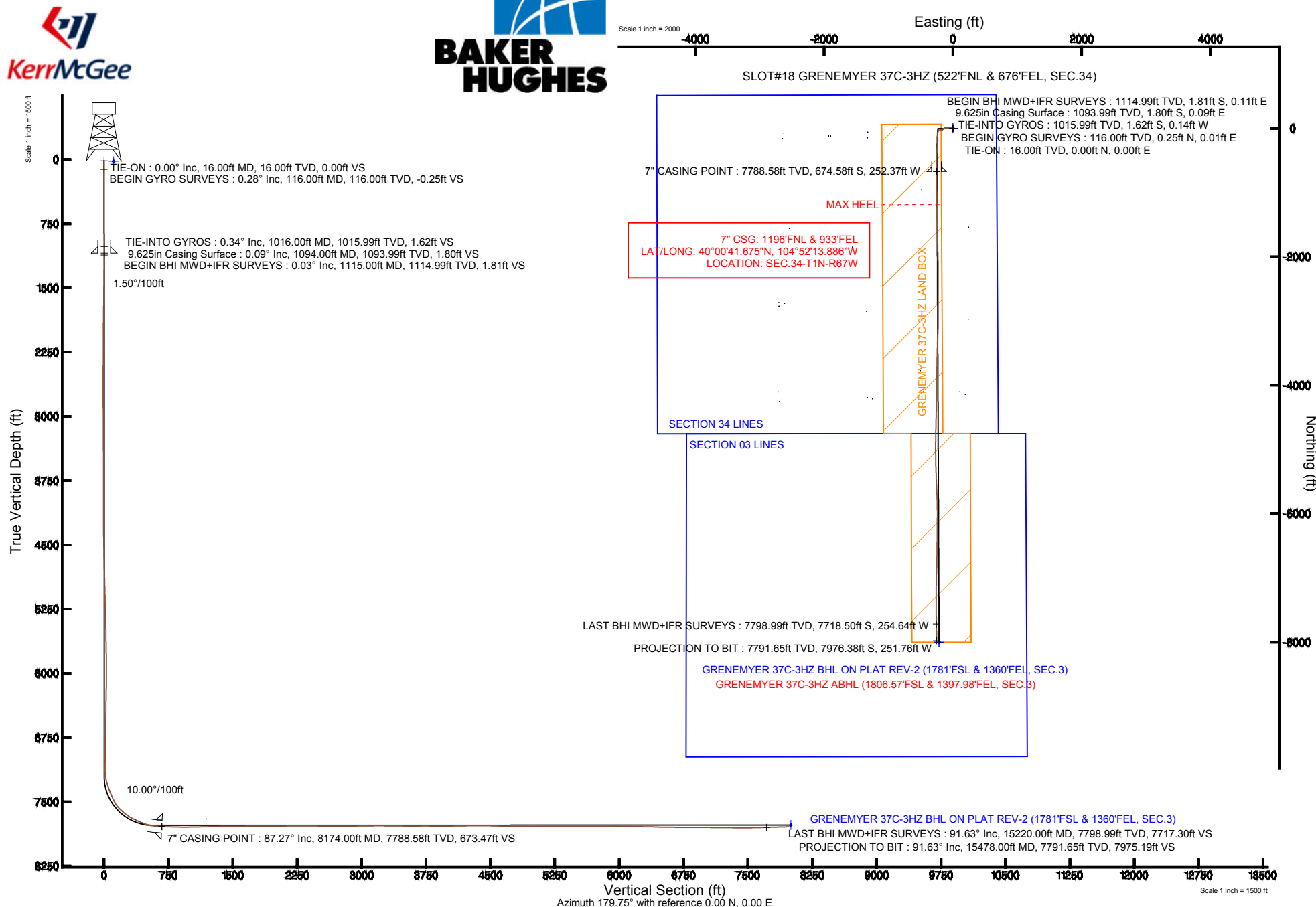


KERR-MCGEE OIL & GAS ONSHORE LP

Location: COLORADO Slot: SLOT#18 GRENNEMYER 37C-3HZ (522°FNL & 676°FEL, SEC.34)
 Field: WELD COUNTY (KERR MCGEE) Well: GRENNEMYER 37C-3HZ
 Facility: SEC.34-T1N-R67W Wellbore: GRENNEMYER 37C-3HZ PWB

Plot reference wellpath is GRENNEMYER 37C-3HZ (REV-B.0) PWP

True vertical depths are referenced to XTREME 24 (RKB 16') (RKB)	Grid System: NAD83 / Lambert Colorado SP, Northern Zone (501), US feet
Measured depths are referenced to XTREME 24 (RKB 16') (RKB)	North Reference: True north
XTREME 24 (RKB 16') (RKB) to Mean Sea Level: 5071 feet	Scale: True distance
Mean Sea Level to Mud line (At Slot: SLOT#18 GRENNEMYER 37C-3HZ (522°FNL & 676°FEL, SEC.34)): 0 feet	Depths are in feet
Coordinates are in feet referenced to Slot	Created by: wilsje02 on 2/19/2014





Actual Wellpath Report

GRENEMYER 37C-3HZ AWP

Page 1 of 6



REFERENCE WELLPATH IDENTIFICATION

Operator	KERR-MCGEE OIL & GAS ONSHORE LP	Slot	SLOT#18 GRENEMYER 37C-3HZ (522'FNL & 676'FEL, SEC.34)
Area	COLORADO	Well	GRENEMYER 37C-3HZ
Field	WELD COUNTY (KERR MCGEE)	Wellbore	GRENEMYER 37C-3HZ AWB
Facility	SEC.34-T1N-R67W		

REPORT SETUP INFORMATION

Projection System	NAD83 / Lambert Colorado SP, Northern Zone (501), US feet	Software System	WellArchitect® 4.0.0
North Reference	True	User	Wilsjef02
Scale	0.999965	Report Generated	2/19/2014 at 15:02:09
Convergence at slot	n/a	Database/Source file	WellArchitectDB/GRENEMYER_37C-3HZ_AWB.xml

WELLPATH LOCATION

	Local coordinates		Grid coordinates		Geographic coordinates	
	North[ft]	East[ft]	Easting[US ft]	Northing[US ft]	Latitude	Longitude
Slot Location	119.58	1898.83	3176566.10	1248365.92	40°00'48.341"N	104°52'10.643"W
Facility Reference Pt			3174668.24	1248232.99	40°00'47.160"N	104°52'35.047"W
Field Reference Pt			3197771.84	1268891.29	40°04'09.600"N	104°47'36.000"W

WELLPATH DATUM

Calculation method	Minimum curvature	XTREME 24 (RKB 16') (RKB) to Facility Vertical Datum	5071.00ft
Horizontal Reference Pt	Slot	XTREME 24 (RKB 16') (RKB) to Mean Sea Level	5071.00ft
Vertical Reference Pt	XTREME 24 (RKB 16') (RKB)	XTREME 24 (RKB 16') (RKB) to Mud Line at Slot (SLOT#18 GRENEMYER 37C-3HZ (522'FNL & 676'FEL, SEC.34))	5071.00ft
MD Reference Pt	XTREME 24 (RKB 16') (RKB)	Section Origin	N 0.00, E 0.00 ft
Field Vertical Reference	Mean Sea Level	Section Azimuth	181.81°

Actual Wellpath Report

GRENEMYER 37C-3HZ AWP

Page 2 of 6

REFERENCE WELLPATH IDENTIFICATION

Operator	KERR-MCGEE OIL & GAS ONSHORE LP	Slot	SLOT#18 GRENEMYER 37C-3HZ (522'FNL & 676'FEL, SEC.34)
Area	COLORADO	Well	GRENEMYER 37C-3HZ
Field	WELD COUNTY (KERR MCGEE)	Wellbore	GRENEMYER 37C-3HZ AWB
Facility	SEC.34-T1N-R67W		

WELLPATH DATA (134 stations) † = interpolated/extrapolated station

MD [ft]	Inclination [°]	Azimuth [°]	TVD [ft]	Vert Sect [ft]	North [ft]	East [ft]	Latitude	Longitude	DLS [°/100ft]	Comments
0.00†	0.000	1.170	0.00	0.00	0.00	0.00	40°00'48.341"N	104°52'10.643"W	0.00	
16.00	0.000	1.170	16.00	0.00	0.00	0.00	40°00'48.341"N	104°52'10.643"W	0.00	TIE-ON
116.00†	0.284	1.170	116.00	-0.25	0.25	0.01	40°00'48.343"N	104°52'10.643"W	0.28	BEGIN GYRO SURVEYS
132.00	0.330	1.170	132.00	-0.33	0.33	0.01	40°00'48.344"N	104°52'10.643"W	0.28	
232.00	0.040	342.560	232.00	-0.65	0.66	0.00	40°00'48.347"N	104°52'10.643"W	0.29	
332.00	0.170	294.170	332.00	-0.74	0.75	-0.14	40°00'48.348"N	104°52'10.645"W	0.15	
432.00	0.280	214.080	432.00	-0.59	0.61	-0.42	40°00'48.347"N	104°52'10.648"W	0.30	
532.00	0.260	245.030	532.00	-0.29	0.31	-0.76	40°00'48.344"N	104°52'10.653"W	0.15	
632.00	0.110	234.490	632.00	-0.12	0.16	-1.04	40°00'48.343"N	104°52'10.656"W	0.15	
732.00	0.300	167.890	732.00	0.19	-0.15	-1.07	40°00'48.339"N	104°52'10.657"W	0.28	
832.00	0.460	150.650	831.99	0.78	-0.76	-0.81	40°00'48.333"N	104°52'10.653"W	0.19	
932.00	0.280	141.130	931.99	1.31	-1.30	-0.46	40°00'48.328"N	104°52'10.649"W	0.19	
1016.00	0.340	129.790	1015.99	1.62	-1.62	-0.14	40°00'48.325"N	104°52'10.645"W	0.10	TIE-INTO GYROS
1115.00	0.030	102.540	1114.99	1.81	-1.81	0.11	40°00'48.323"N	104°52'10.642"W	0.32	BEGIN BHI MWD+IFR SURVEYS
1178.00	0.670	274.980	1177.99	1.79	-1.78	-0.24	40°00'48.323"N	104°52'10.646"W	1.11	
1272.00	2.540	284.700	1271.95	1.30	-1.21	-2.81	40°00'48.329"N	104°52'10.679"W	2.00	
1366.00	2.550	287.540	1365.85	0.26	-0.05	-6.81	40°00'48.341"N	104°52'10.731"W	0.13	
1460.00	2.350	285.300	1459.77	-0.75	1.09	-10.67	40°00'48.352"N	104°52'10.780"W	0.24	
1554.00	2.340	283.560	1553.69	-1.59	2.05	-14.39	40°00'48.361"N	104°52'10.828"W	0.08	
1649.00	2.410	287.360	1648.61	-2.52	3.10	-18.18	40°00'48.372"N	104°52'10.877"W	0.18	
1743.00	2.440	285.360	1742.52	-3.52	4.22	-22.00	40°00'48.383"N	104°52'10.926"W	0.10	
1837.00	2.370	288.500	1836.44	-4.55	5.37	-25.77	40°00'48.394"N	104°52'10.974"W	0.16	
1934.00	2.500	290.380	1933.35	-5.80	6.74	-29.66	40°00'48.408"N	104°52'11.024"W	0.16	
2027.00	2.880	269.950	2026.25	-6.37	7.44	-33.89	40°00'48.415"N	104°52'11.079"W	1.10	
2120.00	2.680	272.710	2119.14	-6.33	7.54	-38.40	40°00'48.416"N	104°52'11.137"W	0.26	
2213.00	2.680	274.250	2212.04	-6.45	7.81	-42.74	40°00'48.418"N	104°52'11.192"W	0.08	
2400.00	2.530	277.610	2398.85	-7.06	8.68	-51.19	40°00'48.427"N	104°52'11.301"W	0.11	
2586.00	2.350	272.450	2584.68	-7.52	9.38	-59.07	40°00'48.434"N	104°52'11.402"W	0.15	
2773.00	2.230	265.270	2771.53	-7.14	9.25	-66.53	40°00'48.432"N	104°52'11.498"W	0.17	
2957.00	1.800	258.260	2955.42	-6.06	8.37	-72.93	40°00'48.424"N	104°52'11.580"W	0.27	
3141.00	1.830	258.900	3139.33	-4.73	7.21	-78.64	40°00'48.412"N	104°52'11.654"W	0.02	
3325.00	1.830	264.520	3323.23	-3.70	6.37	-84.45	40°00'48.404"N	104°52'11.728"W	0.10	
3509.00	1.380	257.480	3507.16	-2.78	5.60	-89.53	40°00'48.396"N	104°52'11.794"W	0.27	
3692.00	1.950	266.780	3690.08	-1.96	4.95	-94.79	40°00'48.390"N	104°52'11.861"W	0.34	
3876.00	1.760	264.530	3873.98	-1.33	4.51	-100.73	40°00'48.386"N	104°52'11.938"W	0.11	
4060.00	2.490	279.020	4057.86	-1.47	4.86	-107.49	40°00'48.389"N	104°52'12.024"W	0.49	
4244.00	2.330	263.350	4241.70	-1.42	5.06	-115.15	40°00'48.391"N	104°52'12.123"W	0.37	
4428.00	2.350	245.830	4425.55	0.78	3.08	-122.31	40°00'48.371"N	104°52'12.215"W	0.39	
4697.00	2.890	243.320	4694.26	6.43	-2.22	-133.40	40°00'48.319"N	104°52'12.358"W	0.21	
4952.00	3.180	241.530	4948.91	13.06	-8.48	-145.36	40°00'48.257"N	104°52'12.511"W	0.12	
5037.00	2.650	241.040	5033.80	15.26	-10.56	-149.16	40°00'48.237"N	104°52'12.560"W	0.62	
5292.00	2.670	234.170	5288.52	21.90	-16.89	-159.13	40°00'48.174"N	104°52'12.688"W	0.13	
5548.00	1.850	232.930	5544.32	28.13	-22.87	-167.26	40°00'48.115"N	104°52'12.793"W	0.32	
5804.00	1.330	227.120	5800.22	32.82	-27.38	-172.73	40°00'48.070"N	104°52'12.863"W	0.21	
5975.00	2.040	267.120	5971.15	34.46	-28.89	-177.23	40°00'48.056"N	104°52'12.921"W	0.78	

REFERENCE WELLPATH IDENTIFICATION

Operator	KERR-MCGEE OIL & GAS ONSHORE LP	Slot	SLOT#18 GRENNEMYER 37C-3HZ (522'FNL & 676'FEL, SEC.34)
Area	COLORADO	Well	GRENNEMYER 37C-3HZ
Field	WELD COUNTY (KERR MCGEE)	Wellbore	GRENNEMYER 37C-3HZ AWB
Facility	SEC.34-T1N-R67W		

WELLPATH DATA (134 stations) † = interpolated/extrapolated station

MD [ft]	Inclination [°]	Azimuth [°]	TVD [ft]	Vert Sect [ft]	North [ft]	East [ft]	Latitude	Longitude	DLS [°/100ft]	Comments
6145.00	2.310	295.560	6141.03	33.33	-27.56	-183.34	40°00'48.069"N	104°52'12.999"W	0.65	
6315.00	2.850	290.400	6310.86	30.60	-24.61	-190.39	40°00'48.098"N	104°52'13.090"W	0.35	
6486.00	2.770	292.590	6481.66	27.78	-21.54	-198.19	40°00'48.128"N	104°52'13.190"W	0.08	
6656.00	2.540	287.110	6651.47	25.33	-18.85	-205.59	40°00'48.155"N	104°52'13.285"W	0.20	
7082.00	1.260	294.950	7077.23	21.00	-14.10	-218.85	40°00'48.202"N	104°52'13.456"W	0.31	
7168.00	1.680	220.890	7163.21	21.60	-14.65	-220.54	40°00'48.196"N	104°52'13.477"W	2.10	
7210.00	7.560	186.230	7205.06	24.84	-17.87	-221.24	40°00'48.164"N	104°52'13.486"W	14.88	
7253.00	14.560	193.970	7247.24	32.95	-25.94	-222.85	40°00'48.085"N	104°52'13.507"W	16.61	
7295.00	17.570	195.670	7287.59	44.27	-37.17	-225.84	40°00'47.974"N	104°52'13.546"W	7.25	
7338.00	19.710	192.280	7328.34	57.71	-50.50	-229.14	40°00'47.842"N	104°52'13.588"W	5.58	
7380.00	20.580	193.050	7367.77	71.91	-64.61	-232.31	40°00'47.702"N	104°52'13.629"W	2.17	
7423.00	22.210	187.240	7407.81	87.42	-80.04	-235.04	40°00'47.550"N	104°52'13.664"W	6.21	
7466.00	24.600	183.560	7447.27	104.46	-97.04	-236.62	40°00'47.382"N	104°52'13.684"W	6.51	
7508.00	25.620	179.630	7485.30	122.27	-114.85	-237.11	40°00'47.206"N	104°52'13.690"W	4.65	
7551.00	31.870	178.770	7522.98	142.92	-135.51	-236.80	40°00'47.002"N	104°52'13.686"W	14.57	
7594.00	39.950	178.170	7557.78	168.07	-160.70	-236.12	40°00'46.753"N	104°52'13.678"W	18.81	
7636.00	47.060	179.640	7588.23	196.93	-189.59	-235.59	40°00'46.467"N	104°52'13.671"W	17.10	
7679.00	49.250	182.810	7616.91	228.95	-221.61	-236.29	40°00'46.151"N	104°52'13.680"W	7.49	
7721.00	51.920	183.470	7643.58	261.39	-254.00	-238.07	40°00'45.831"N	104°52'13.703"W	6.47	
7764.00	55.680	184.980	7668.97	296.05	-288.60	-240.64	40°00'45.489"N	104°52'13.736"W	9.19	
7807.00	61.710	185.790	7691.30	332.70	-325.16	-244.09	40°00'45.128"N	104°52'13.780"W	14.12	
7849.00	65.950	184.490	7709.82	370.32	-362.69	-247.46	40°00'44.757"N	104°52'13.823"W	10.47	
7892.00	66.810	184.030	7727.05	409.68	-401.98	-250.39	40°00'44.369"N	104°52'13.861"W	2.23	
7934.00	67.730	182.110	7743.28	448.40	-440.66	-252.46	40°00'43.986"N	104°52'13.888"W	4.75	
7977.00	69.990	180.050	7758.79	488.50	-480.75	-253.21	40°00'43.590"N	104°52'13.897"W	6.90	
8019.00	75.170	179.580	7771.36	528.54	-520.81	-253.08	40°00'43.194"N	104°52'13.896"W	12.38	
8062.00	82.610	179.720	7779.64	570.67	-562.98	-252.82	40°00'42.777"N	104°52'13.892"W	17.31	
8105.00	85.000	180.050	7784.28	613.39	-605.72	-252.73	40°00'42.355"N	104°52'13.891"W	5.61	
8125.00	86.240	179.730	7785.81	633.32	-625.66	-252.70	40°00'42.158"N	104°52'13.891"W	6.40	
8174.00†	87.267	179.517	7788.58	682.21	-674.58	-252.37	40°00'41.675"N	104°52'13.886"W	2.14	7" CASING POINT
8187.00	87.540	179.460	7789.17	695.19	-687.57	-252.26	40°00'41.546"N	104°52'13.885"W	2.14	
8272.00	88.300	180.000	7792.26	780.07	-772.51	-251.86	40°00'40.707"N	104°52'13.880"W	1.10	
8364.00	88.390	179.440	7794.91	871.97	-864.47	-251.41	40°00'39.798"N	104°52'13.874"W	0.62	
8456.00	90.700	179.530	7795.64	963.89	-956.46	-250.58	40°00'38.889"N	104°52'13.863"W	2.51	
8640.00	91.360	178.670	7792.34	1147.65	-1140.40	-247.69	40°00'37.071"N	104°52'13.826"W	0.59	
8732.00	91.660	178.480	7789.91	1239.47	-1232.34	-245.40	40°00'36.163"N	104°52'13.797"W	0.39	
8824.00	90.670	179.940	7788.04	1331.35	-1324.31	-244.14	40°00'35.254"N	104°52'13.781"W	1.92	
8915.00	90.120	179.460	7787.41	1422.29	-1415.31	-243.66	40°00'34.354"N	104°52'13.774"W	0.80	
9099.00	90.800	178.500	7785.94	1606.06	-1599.27	-240.39	40°00'32.537"N	104°52'13.732"W	0.64	
9191.00	90.860	179.260	7784.60	1697.93	-1691.24	-238.59	40°00'31.628"N	104°52'13.709"W	0.83	
9283.00	89.630	178.790	7784.21	1789.82	-1783.23	-237.02	40°00'30.719"N	104°52'13.689"W	1.43	
9467.00	90.330	178.410	7784.27	1973.53	-1967.17	-232.53	40°00'28.901"N	104°52'13.631"W	0.43	
9651.00	90.920	179.550	7782.27	2157.29	-2151.13	-229.25	40°00'27.083"N	104°52'13.589"W	0.70	
9743.00	90.300	180.220	7781.29	2249.23	-2243.12	-229.07	40°00'26.174"N	104°52'13.587"W	0.99	
9835.00	89.320	180.020	7781.59	2341.19	-2335.12	-229.26	40°00'25.265"N	104°52'13.589"W	1.09	



Actual Wellpath Report

GRENEMYER 37C-3HZ AWP

Page 4 of 6



REFERENCE WELLPATH IDENTIFICATION

Operator	KERR-MCGEE OIL & GAS ONSHORE LP	Slot	SLOT#18 GRENEMYER 37C-3HZ (522'FNL & 676'FEL, SEC.34)
Area	COLORADO	Well	GRENEMYER 37C-3HZ
Field	WELD COUNTY (KERR MCGEE)	Wellbore	GRENEMYER 37C-3HZ AWB
Facility	SEC.34-T1N-R67W		

WELLPATH DATA (134 stations)

MD [ft]	Inclination [°]	Azimuth [°]	TVD [ft]	Vert Sect [ft]	North [ft]	East [ft]	Latitude	Longitude	DLS [°/100ft]	Comments
9927.00	89.720	179.190	7782.36	2433.11	-2427.11	-228.62	40°00'24.356"N	104°52'13.581"W	1.00	
10019.00	89.440	179.910	7783.04	2525.04	-2519.10	-227.90	40°00'23.446"N	104°52'13.572"W	0.84	
10111.00	90.120	179.920	7783.39	2616.99	-2611.10	-227.77	40°00'22.537"N	104°52'13.570"W	0.74	
10204.00	89.500	180.250	7783.70	2709.95	-2704.10	-227.90	40°00'21.618"N	104°52'13.572"W	0.76	
10297.00	90.240	180.380	7783.91	2802.91	-2797.10	-228.41	40°00'20.699"N	104°52'13.578"W	0.81	
10391.00	90.460	180.200	7783.34	2896.88	-2891.10	-228.89	40°00'19.770"N	104°52'13.584"W	0.30	
10578.00	90.900	180.310	7781.12	3083.80	-3078.08	-229.72	40°00'17.922"N	104°52'13.595"W	0.24	
10673.00	90.580	182.470	7779.89	3178.78	-3173.04	-232.03	40°00'16.984"N	104°52'13.625"W	2.30	
10766.00	88.950	181.930	7780.27	3271.77	-3265.97	-235.60	40°00'16.066"N	104°52'13.671"W	1.85	
10953.00	89.630	181.410	7782.59	3458.76	-3452.87	-241.05	40°00'14.219"N	104°52'13.741"W	0.46	
11132.00	90.180	181.080	7782.89	3637.75	-3631.83	-244.94	40°00'12.450"N	104°52'13.790"W	0.36	
11388.00	89.720	181.130	7783.11	3893.73	-3887.78	-249.87	40°00'09.921"N	104°52'13.854"W	0.18	
11728.00	91.290	180.130	7780.11	4233.63	-4227.73	-253.61	40°00'06.561"N	104°52'13.902"W	0.55	
11899.00	89.810	181.910	7778.47	4404.59	-4398.68	-256.65	40°00'04.872"N	104°52'13.941"W	1.35	
11984.00	88.360	181.420	7779.83	4489.58	-4483.63	-259.12	40°00'04.032"N	104°52'13.973"W	1.80	
12325.00	89.290	180.910	7786.82	4830.48	-4824.49	-266.06	40°00'00.664"N	104°52'14.062"W	0.31	
12581.00	90.430	179.380	7787.45	5086.36	-5080.47	-266.70	39°59'58.134"N	104°52'14.070"W	0.75	
12836.00	90.180	178.170	7786.09	5340.99	-5335.41	-261.25	39°59'55.615"N	104°52'14.000"W	0.48	
13007.00	90.030	177.560	7785.78	5511.59	-5506.29	-254.88	39°59'53.926"N	104°52'13.918"W	0.37	
13177.00	90.090	177.880	7785.60	5681.15	-5676.15	-248.12	39°59'52.248"N	104°52'13.831"W	0.19	
13262.00	89.620	177.690	7785.81	5765.94	-5761.09	-244.83	39°59'51.408"N	104°52'13.789"W	0.60	
13347.00	90.090	178.170	7786.03	5850.75	-5846.03	-241.76	39°59'50.569"N	104°52'13.749"W	0.79	
13433.00	90.740	179.840	7785.40	5936.64	-5932.01	-240.27	39°59'49.719"N	104°52'13.730"W	2.08	
13518.00	89.280	179.960	7785.39	6021.59	-6017.01	-240.12	39°59'48.879"N	104°52'13.728"W	1.72	
13603.00	88.480	180.550	7787.05	6106.54	-6101.99	-240.50	39°59'48.039"N	104°52'13.733"W	1.17	
13688.00	88.800	180.740	7789.07	6191.50	-6186.96	-241.46	39°59'47.200"N	104°52'13.745"W	0.44	
13773.00	89.600	180.160	7790.26	6276.47	-6271.95	-242.12	39°59'46.360"N	104°52'13.754"W	1.16	
13859.00	88.550	180.190	7791.64	6362.42	-6357.94	-242.39	39°59'45.510"N	104°52'13.757"W	1.22	
13944.00	87.710	181.400	7794.42	6447.36	-6442.88	-243.56	39°59'44.670"N	104°52'13.773"W	1.73	
14072.00	89.780	180.530	7797.22	6575.31	-6570.83	-245.72	39°59'43.406"N	104°52'13.800"W	1.75	
14200.00	89.000	181.130	7798.58	6703.28	-6698.80	-247.57	39°59'42.141"N	104°52'13.824"W	0.77	
14285.00	90.180	180.950	7799.19	6788.27	-6783.79	-249.12	39°59'41.302"N	104°52'13.844"W	1.40	
14370.00	90.830	181.750	7798.44	6873.26	-6868.76	-251.12	39°59'40.462"N	104°52'13.870"W	1.21	
14455.00	89.530	181.890	7798.18	6958.26	-6953.71	-253.82	39°59'39.622"N	104°52'13.904"W	1.54	
14540.00	88.370	180.620	7799.73	7043.24	-7038.68	-255.68	39°59'38.783"N	104°52'13.928"W	2.02	
14625.00	89.320	181.070	7801.45	7128.21	-7123.65	-256.93	39°59'37.943"N	104°52'13.944"W	1.24	
14710.00	90.180	181.780	7801.82	7213.20	-7208.62	-259.05	39°59'37.103"N	104°52'13.971"W	1.31	
14795.00	89.040	179.640	7802.40	7298.18	-7293.60	-260.10	39°59'36.263"N	104°52'13.985"W	2.85	
14880.00	90.240	180.240	7802.93	7383.13	-7378.60	-260.01	39°59'35.423"N	104°52'13.984"W	1.58	
14965.00	89.590	179.470	7803.06	7468.08	-7463.60	-259.80	39°59'34.583"N	104°52'13.981"W	1.19	
15050.00	90.710	178.330	7802.83	7552.97	-7548.58	-258.16	39°59'33.744"N	104°52'13.960"W	1.88	
15135.00	91.420	178.780	7801.25	7637.81	-7633.54	-256.02	39°59'32.904"N	104°52'13.932"W	0.99	
15220.00	91.630	179.360	7798.99	7722.69	-7718.50	-254.64	39°59'32.064"N	104°52'13.915"W	0.73	LAST BHI MWD+IFR SURVEYS
15478.00	91.630	179.360	7791.65	7980.35	-7976.38	-251.76	39°59'29.516"N	104°52'13.878"W	0.00	PROJECTION TO BIT



Actual Wellpath Report

GRENEMYER 37C-3HZ AWP

Page 5 of 6



REFERENCE WELLPATH IDENTIFICATION

Operator	KERR-MCGEE OIL & GAS ONSHORE LP	Slot	SLOT#18 GRENEMYER 37C-3HZ (522'FNL & 676'FEL, SEC.34)
Area	COLORADO	Well	GRENEMYER 37C-3HZ
Field	WELD COUNTY (KERR MCGEE)	Wellbore	GRENEMYER 37C-3HZ AWB
Facility	SEC.34-T1N-R67W		

HOLE & CASING SECTIONS - Ref Wellbore: GRENEMYER 37C-3HZ AWB Ref Wellpath: GRENEMYER 37C-3HZ AWP

String/Diameter	Start MD [ft]	End MD [ft]	Interval [ft]	Start TVD [ft]	End TVD [ft]	Start N/S [ft]	Start E/W [ft]	End N/S [ft]	End E/W [ft]
13.5in Open Hole	16.00	1094.00	1078.00	16.00	1093.99	0.00	0.00	-1.80	0.09
9.625in Casing Surface	16.00	1094.00	1078.00	16.00	1093.99	0.00	0.00	-1.80	0.09
8.75in Open Hole	1094.00	8184.00	7090.00	1093.99	7789.04	-1.80	0.09	-684.57	-252.29
7in Casing Intermediate	16.00	8174.00	8158.00	16.00	7788.58	0.00	0.00	-674.58	-252.37
6.125in Open Hole	8174.00	15478.00	7304.00	7788.58	7791.65	-674.58	-252.37	-7976.38	-251.76

TARGETS

Name	MD [ft]	TVD [ft]	North [ft]	East [ft]	Grid East [US ft]	Grid North [US ft]	Latitude	Longitude	Shape
GRENEMEYER SECTION 34 LINES		22.00	-119.43	-1898.85	3174668.22	1248232.99	40°00'47.160"N	104°52'35.047"W	polygon
GRENEMEYER SECTION 03 LINES		5071.00	-119.43	-1898.85	3174668.22	1248232.99	40°00'47.160"N	104°52'35.047"W	polygon
GRENEMYER 37C-3HZ MAX HEEL		7700.00	0.00	0.00	3176566.10	1248365.92	40°00'48.341"N	104°52'10.643"W	polygon
GRENEMYER 37C-3HZ BHL ON PLAT REV-2 (1781'FSL & 1360'FEL, SEC.3)		7771.00	-8001.95	-213.78	3176409.22	1240362.94	39°59'29.263"N	104°52'13.390"W	point
GRENEMYER 37C-3HZ BHL ON PLAT REV-1 (1781'FSL & 1360'FEL, SEC.3)		7799.00	-8001.95	-213.78	3176409.22	1240362.94	39°59'29.263"N	104°52'13.390"W	point
GRENEMYER 37C-3HZ LAND BOX		7800.00	0.00	0.00	3176566.10	1248365.92	40°00'48.341"N	104°52'10.643"W	polygon

WELLPATH COMPOSITION - Ref Wellbore: GRENEMYER 37C-3HZ AWB Ref Wellpath: GRENEMYER 37C-3HZ AWP

Start MD [ft]	End MD [ft]	Positional Uncertainty Model	Log Name/Comment	Wellbore
16.00	1016.00	Generic gyro - continuous (Standard)	MS GYRODATA SURVEYS <116-1016>	GRENEMYER 37C-3HZ AWB
1016.00	8125.00	NaviTrak (MAGCORR,IFR)	BHI MWD+IFR SURVEYS 8 3/4" HOLE <1115-8125>	GRENEMYER 37C-3HZ AWB
8125.00	15220.00	NaviTrak (MAGCORR,IFR)	BHI MWD+IFR SURVEY 6 1/8" HOLE <8187-15220>	GRENEMYER 37C-3HZ AWB
15220.00	15478.00	Blind Drilling (std)	Projection to bit	GRENEMYER 37C-3HZ AWB



Actual Wellpath Report

GRENNEMYER 37C-3HZ AWP

Page 6 of 6



REFERENCE WELLPATH IDENTIFICATION

Operator	KERR-MCGEE OIL & GAS ONSHORE LP	Slot	SLOT#18 GRENNEMYER 37C-3HZ (522'FNL & 676'FEL, SEC.34)
Area	COLORADO	Well	GRENNEMYER 37C-3HZ
Field	WELD COUNTY (KERR MCGEE)	Wellbore	GRENNEMYER 37C-3HZ AWB
Facility	SEC.34-T1N-R67W		

WELLPATH COMMENTS

MD [ft]	Inclination [°]	Azimuth [°]	TVD [ft]	Comment
16.00	0.000	1.170	16.00	TIE-ON
116.00	0.284	1.170	116.00	BEGIN GYRO SURVEYS
1016.00	0.340	129.790	1015.99	TIE-INTO GYROS
1115.00	0.030	102.540	1114.99	BEGIN BHI MWD+IFR SURVEYS
8174.00	87.267	179.517	7788.58	7" CASING POINT
15220.00	91.630	179.360	7798.99	LAST BHI MWD+IFR SURVEYS
15478.00	91.630	179.360	7791.65	PROJECTION TO BIT