

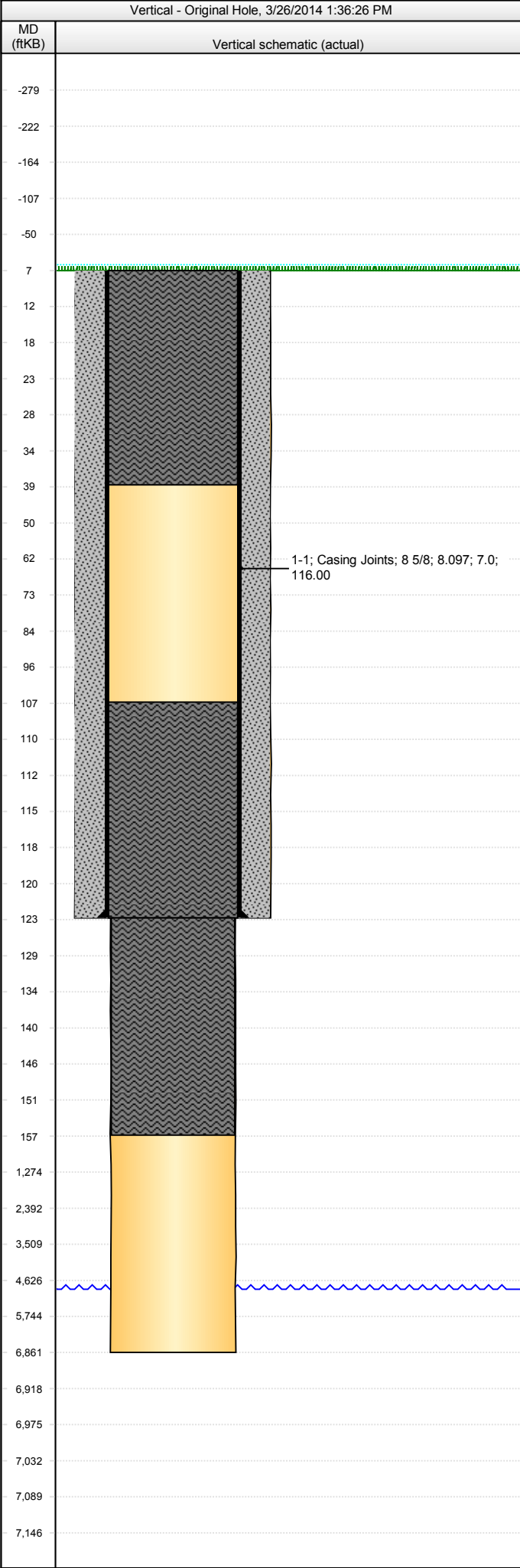


Whiting Oil & Gas Corp
1700 Broadway, Suite 2300
Denver, CO 80290
(303) 837-1661

WOGC Well History Schematic Report

Well Name: FREGEAU 2

API Number 051230750200			WPC ID			Well Permit Number			Field Name Mitigation-DJ Basin			County Weld			State CO		
Well Configuration Type Vertical					Orig KB Elv (ft) 4,950.00		Ground Elevation (ft) 4,943.00		Casing Flange Elevation (ft)			Tubing Head Elevation (ft)		Total Depth (ft)KB 6,861.0			
Original Spud Date 7/11/1972			Completion Date 7/22/1972		Asset Group Redtail Asset Group				Responsible Engineer James Kopp			N/S Dist (ft) 940.0		N/S Ref FSL	E/W Dist (ft) 960.0		E/W Ref FEL
Lot	Quarter 1 SE	Quarter 2 SE	Quarter 3	Quarter 4	Section 9	Section Suffix	Section Type	Township 10		Township N/S Dir N	Range 58	Range E/W Dir W		Meridian 6TH			



Jobs							
Job Type		Start Date		Summary			
Drill & Abandon		7/11/1972					
Perforations							
Type of Hole		Date		Top (ftKB)	Btm (ftKB)		
Stim/Treat Stages							
Stage Type	Start Date	Top (ftKB)	Btm (ftKB)	Stim/Treat Fluid	Vol Clean Pump (bbl)		
Wellbore Sections							
Section Des	Wellbore Name	Size (in)	Act Top (ftKB)	Act Btm (ftKB)	Start Date		
Surface	Original Hole	12 1/4	7.0	123.0	7/11/1972		
Open Hole	Original Hole	7 7/8	123.0	6,861.0	7/22/1972		
Surface Csg, 123.0ftKB							
Comment							
OD (in)	Wt (lb/ft)	Grade	Top (ftKB)	Btm (ftKB)	Len (ft)	Item Des	
8 5/8	24.00	J-55	7.0	123.0	116.00	Casing Joints	
Cement Stages							
Des			Top (ftKB)	Btm (ftKB)	Top Meas Meth	Pump Start Date	
Surface Casing Cement			7.0	123.0		7/22/1972	
Cement Plug			123.0	157.0		7/22/1972	
Cement Plug			107.0	123.0		7/22/1972	
Cement Plug			7.0	39.0		7/22/1972	
Other In Hole							
Des			OD (in)	ID (in)	Run Date	Top (ftKB)	Btm (ftKB)
<des> set at <depth>ftKB on <dtmrun>							
Set Depth (ftKB)		Comment			Run Date	Pull Date	
Item Des				OD (in)	Len (ft)	Top (ftKB)	Btm (ftKB)
<des> on <dtmrun>							
Rod Description					Run Date		
Item Des				OD (in)	Len (ft)	Top (ftKB)	Btm (ftKB)

Com

THIS WELL IS LOCATED WITHIN 1500' OF PROPOSED WELLS IN THE RAZOR 21A AND 21B PAD AND IS THEREFORE SUBJECT TO THE DJ BASIN HORIZONTAL OFFSET POLICY.