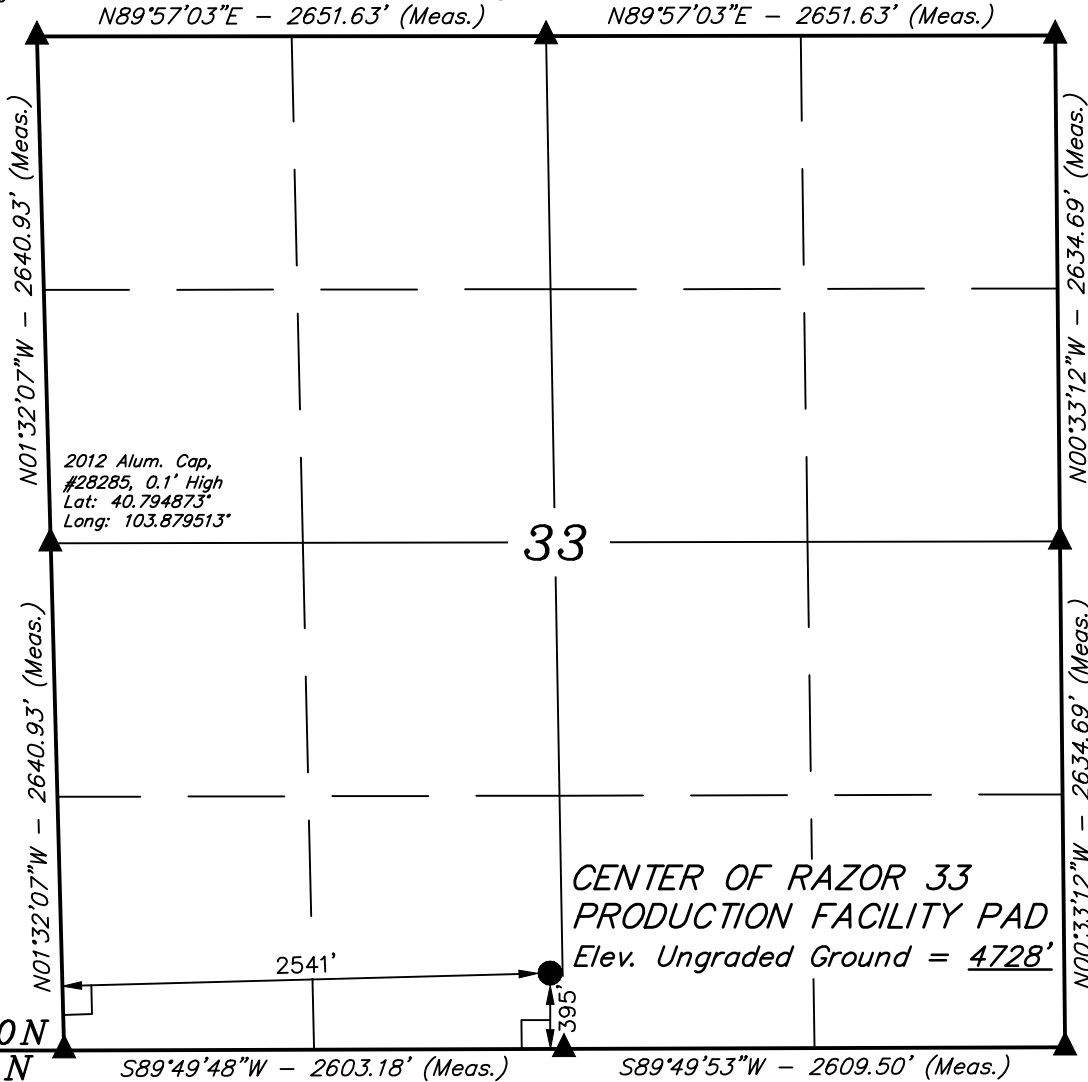


# T10N, R58W, 6th P.M.

2010 Alum. Cap,  
0.3' High  
Lat: 40.802117°  
Long: 103.879772°

2012 Alum. Cap,  
#28285, 0.2' High  
Lat: 40.802128°  
Long: 103.870197°

2010 Alum. Cap,  
0.5' Below Ground  
Lat: 40.802136°  
Long: 103.860622°



**CENTER OF RAZOR 33  
PRODUCTION FACILITY PAD**  
Elev. Ungraded Ground = 4728'

## WHITING OIL & GAS CORP.

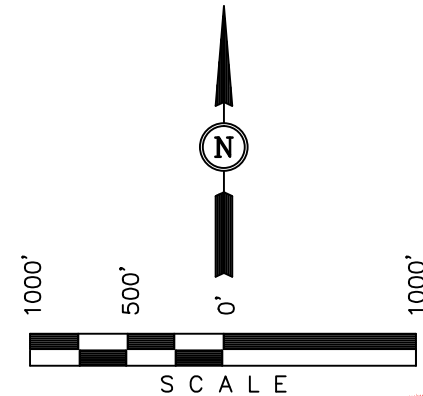
Production Facility location, CENTER OF RAZOR 33 PRODUCTION FACILITY PAD, located as shown in the SE 1/4 SW 1/4 of Section 33, T10N, R58W, 6th P.M., Weld County, Colorado.

### BASIS OF ELEVATION

SPOT ELEVATION LOCATED AT THE NORTHEAST CORNER OF SECTION 15, T9N, R58W, 6th P.M. TAKEN FROM THE GATEHOOK SPRING, QUADRANGLE, COLORADO, WELD COUNTY, 7.5 MINUTE QUAD (TOPOGRAPHIC MAP) PUBLISHED BY THE UNITED STATES DEPARTMENT OF THE INTERIOR, GEOLOGICAL SURVEY. SAID ELEVATION IS MARKED AS BEING 4679 FEET.

### BASIS OF BEARINGS

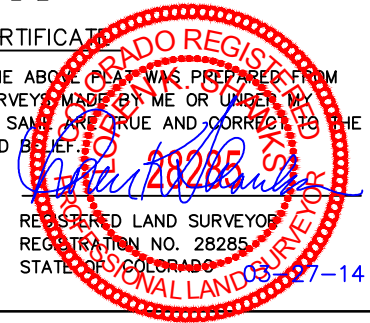
BASIS OF BEARINGS IS A G.P.S. OBSERVATION.



### CERTIFICATION

THIS IS TO CERTIFY THAT THE ABOVE PLAT WAS PREPARED FROM FIELD NOTES OF ACTUAL SURVEYS MADE BY ME OR UNDER MY SUPERVISION AND THAT THE SAME ARE TRUE AND CORRECT TO THE BEST OF MY KNOWLEDGE AND BELIEF.

REGISTERED LAND SURVEYOR  
REGISTRATION NO. 28285  
STATE OF COLORADO



T10N  
T9N S89°49'48"W - 2603.18' (Meas.) S89°49'53"W - 2609.50' (Meas.)

2010 Alum. Cap,  
0.3' Below Ground  
Lat: 40.787628°  
Long: 103.879253°

2012 Alum. Cap,  
#28285,  
1.0' Below Ground  
Lat: 40.787653°  
Long: 103.869856°

2010 Alum. Cap  
Lat: 40.787675°  
Long: 103.860433°

### LEGEND:

- └─┘ = 90° SYMBOL
- = CENTER OF PRODUCTION FACILITY PAD.
- ▲ = SECTION CORNERS LOCATED.

PDOP = 1.4

<b>NAD 83 (CENTER OF RAZOR 33 PRODUCTION FACILITY PAD)</b>
LATITUDE = 40°47'19.45" (40.788736)
LONGITUDE = 103°52'12.41" (103.870114)
<b>NAD 27 (CENTER OF RAZOR 33 PRODUCTION FACILITY PAD)</b>
LATITUDE = 40°47'19.50" (40.788750)
LONGITUDE = 103°52'10.60" (103.869611)

**UINTAH ENGINEERING & LAND SURVEYING**  
85 SOUTH 200 EAST - VERNAL, UTAH 84078  
(435) 789-1017

SCALE 1" = 1000'	DATE SURVEYED: 03-25-14	DATE DRAWN: 03-26-14
PARTY DALLAS NIELSEN D.S. J.S.	REFERENCES G.L.O. PLAT	
WEATHER COLD	FILE WHITING OIL & GAS CORP.	