

**ANADARKO PETROLEUM CORP - EBUS
DO NOT MAIL - PO BOX 4995
THE WOODLANDS, Texas**

Xcel 22C-22HZ

Majors 42

Post Job Summary **Cement Surface Casing**

Prepared for:
Date Prepared: 12/1/2013
Version: 1

Service Supervisor: PICKELL, CHRISTOPHER

Submitted by: FINNEY, SEAN

HALLIBURTON

Wellbore Geometry

Job Tubulars					MD		Shoe Joint Length ft
Type	Description	Size in	ID in	Wt lbm/ft	Top ft	Bottom ft	
Casing	9 5/8" Surface Casing	9.63	8.921	36.00	0.00	1,071.00	42.00
Open Hole Section	13 1/2" Open Hole Section		13.500		0.00	1,073.00	0.00

HALLIBURTON

Pumping Schedule

Stage / Plug #	Fluid #	Fluid Type	Fluid Name	Surface Density lbm/gal	Avg Rate bbl/min	Surface Volume	Downhole Volume
1	1	Spacer	Fresh Water Spacer	8.33	2.00	10.0 bbl	10.0 bbl
1	2	Spacer	Mud Flush	8.40	3.00	12.0 bbl	12.0 bbl
1	1	Spacer	Fresh Water Spacer	8.33	3.00	10.0 bbl	10.0 bbl
1	3	Cement Slurry	SwiftCem B2	14.20	5.00	402.0 sacks	402.0 sacks

Fluids Pumped

Stage/Plug # 1 Fluid 1: Fresh Water Spacer
DUMMY MUD / FLUSH / SPACER SBC MATERIAL

Fluid Density: 8.33 lbm/gal
Fluid Volume: 10.00 bbl
Pump Rate: 2.00 bbl/min

Stage/Plug # 1 Fluid 2: Mud Flush
DUMMY MUD / FLUSH / SPACER SBC MATERIAL
3.5 lbm/bbl Mud Flush III
42 gal/bbl Mud Flush III

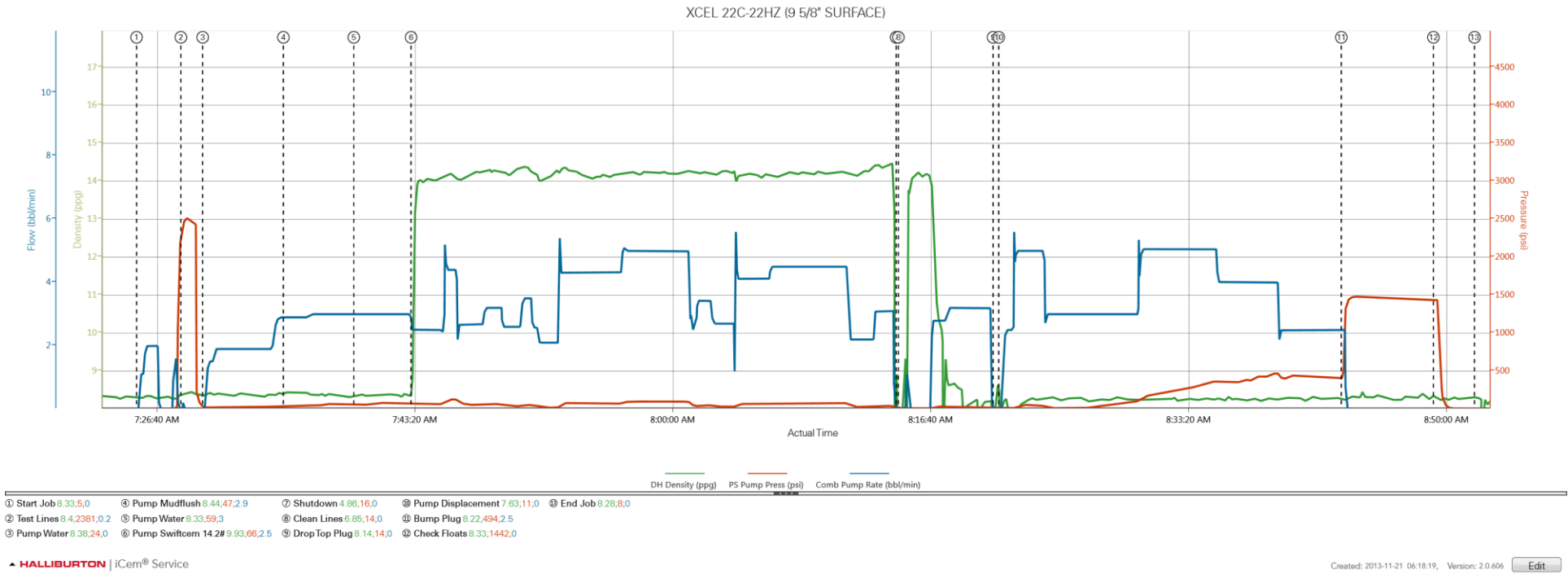
Fluid Density: 8.40 lbm/gal
Fluid Volume: 12.00 bbl
Pump Rate: 3.00 bbl/min

Stage/Plug # 1 Fluid 3: SwiftCem B2
SWIFTCM (TM) SYSTEM

Fluid Weight: 14.20 lbm/gal
Slurry Yield: 1.53 ft³/sack
Total Mixing Fluid: 7.63 Gal
Surface Volume: 402.0 sacks
Sacks: 402.0 sacks
Calculated Fill: 900.00 ft
Calculated Top of Fluid: 0.00 ft

HALLIBURTON

Data Acquisition



HALLIBURTON

Service Supervisor Reports

Job Log

Date/Time	Chart #	Activity Code	Pump Rate	Cum Vol	Pump		Pressure (psig)		Comments
11/21/2013 01:00		Call Out							CREW CALLED OUT AT 0100 TO BE ON LOCATION AT 0530. CREW WAS CHRIS PICKELL, ROY NESBITT, JAMES WILEY, JAMES MYRE, KEN MILLS
11/21/2013 05:00		Depart from Service Center or Other Site							SAFETY MEETING HELD FOR JOURNEY FROM YARD TO MAJOR 42
11/21/2013 05:30		Arrive At Loc							ARRIVE AT LOCATION AT 0530. RIG WAS ON BOTTOM CIRCULATING
11/21/2013 05:40		Rig-Up Equipment							HAZARD HUNT PERFORMED. WATER TEST DONE. RIG UP PLANNED AND EXICUTED
11/21/2013 07:00		Pre-Job Safety Meeting							SAFETY MEETING WITH ALL PERSONEL ON LOCATION TO DISCUSS JOB SAFETY AND PROCEDURE
11/21/2013 07:25		Start Job							QUICK LATCH PLUG CONTAINER USED ON JOB
11/21/2013 07:28		Test Lines	1	3				2500.0	PRESSURE TEST LINES TO 2500 PSI. CHECK FOR VISIBLE LEAKS AND PRESSURE LOSS
11/21/2013 07:29		Pump Spacer 1	2	10				75.0	PUMP WATER. RETURNS BEGAN WITH 1 BBL AWAY
11/21/2013 07:34		Pump Spacer 2	3	12				125.0	PUMP MUDDLUSH
11/21/2013 07:39		Pump Spacer 1	3	10				150.0	PUMP WATER
11/21/2013 07:43		Pump Cement	5	110.3				175.0	PUMP SWIFCEM CEMENT 402 SKS 14.2 PPG 1.54 CUFT/SK 7.66 GAL/SK
11/21/2013 08:14		Shutdown							
11/21/2013 08:14		Clean Lines							WASH PUMPS AND LINES INTO HALF MOON TANK
11/21/2013 08:20		Drop Top Plug							PLUG PRELOADED. WITNESSED BY COMPANY MAN
11/21/2013 08:21		Pump Displacement	5	81				500.0	PUMP DISPLACEMENT USING WATER. CALCULATED DISPLACEMENT WAS 80.2 BBL
11/21/2013 08:43		Bump Plug	2.5					455.0	CALCULATED PRESSURE TO LAND WAS 270. PLUG LANDED WITH 455 PSI GOING 1000 PSI OVER TO 1400
11/21/2013 08:49		Check Floats							PRESSURE WAS HELD FOR 5 MINUTES THEN RELEASED. FLOATS HELD. 1/2 BBL BACK TO TANKS
11/21/2013 08:51		End Job							25 BBL OF CEMENT TO SURFACE. GOOD RETURNS THROUGHOUT ENTIRE JOB
11/21/2013 09:00		Pre-Rig Down Safety Meeting							SAFETY MEETING HELD TO DISCUSS RIG DOWN SAFETY AND PROCEDURE
11/21/2013 09:15		Rig-Down Equipment							RIG DOWN ALL EQUIPMENT
11/21/2013 10:00		Depart Location for Service Center or Other Site							LEAVE LOCATION FOR THE YARD

The Road to Excellence Starts with Safety

Sold To #: 300466		Ship To #: 3202446		Quote #:		Sales Order #: 900916436	
Customer: ANADARKO PETROLEUM CORP - EBUS				Customer Rep: Hersh, Larry			
Well Name: Xcel			Well #: 22C-22HZ		API/UWI #:		
Field: WATTENBERG		City (SAP): DАCONO		County/Parish: Weld		State: Colorado	
Contractor: Majors			Rig/Platform Name/Num: Majors 42				
Job Purpose: Cement Surface Casing							
Well Type: Development Well				Job Type: Cement Surface Casing			
Sales Person: PLIENESS, RYAN			Srvc Supervisor: PICKELL, CHRISTOPHER			MBU ID Emp #: 396838	

Job Personnel

HES Emp Name	Exp Hrs	Emp #	HES Emp Name	Exp Hrs	Emp #	HES Emp Name	Exp Hrs	Emp #
MYRE, JAMES	0.0	549859	NESBITT, ROY Iverson	0.0	537416	PICKELL, CHRISTOPHER Lee	0.0	396838
WILEY, JAMES A	0.0	440080						

Equipment

HES Unit #	Distance-1 way	HES Unit #	Distance-1 way	HES Unit #	Distance-1 way	HES Unit #	Distance-1 way
10972458	7 mile	11019275C	7 mile	11036295C	7 mile	11605597	7 mile
11667703C	7 mile						

Job Hours

Date	On Location Hours	Operating Hours	Date	On Location Hours	Operating Hours	Date	On Location Hours	Operating Hours

TOTAL Total is the sum of each column separately

Job

Job Times

Formation Name	Formation Depth (MD)	Top	Bottom	Form Type	Job depth MD	Job Depth TVD	Water Depth	Perforation Depth (MD)	From	To	Called Out	Date	Time	Time Zone
				BHST	1073. ft	1073. ft	5. ft					21 - Nov - 2013	01:00	MST
											On Location	21 - Nov - 2013	05:30	MST
											Job Started	21 - Nov - 2013	07:25	MST
											Job Completed	21 - Nov - 2013	08:51	MST
											Departed Loc	21 - Nov - 2013	10:00	MST

Well Data

Description	New / Used	Max pressure psig	Size in	ID in	Weight lbm/ft	Thread	Grade	Top MD ft	Bottom MD ft	Top TVD ft	Bottom TVD ft
13 1/2" Open Hole Section				13.5				.	1073.		
9 5/8" Surface Casing	Unknown		9.625	8.921	36.		J-55	.	1071.		

Fluid Data

Stage/Plug #: 1

Fluid #	Stage Type	Fluid Name	Qty	Qty uom	Mixing Density lbm/gal	Yield ft ³ /sk	Mix Fluid Gal/sk	Rate bbl/min	Total Mix Fluid Gal/sk
---------	------------	------------	-----	---------	------------------------	---------------------------	------------------	--------------	------------------------

1	Fresh Water Spacer		10.00	bbl	8.33			2.0	
2	Mud Flush		12.00	bbl	8.4			3.0	
3.5 lbm/bbl		MUD FLUSH III, 40 LB SACK (101633304)							
42 gal/bbl		MUD FLUSH III - SBM (528788)							
1	Fresh Water Spacer		10.00	bbl	8.33			3.0	
3	SwiftCem B2	SWIFTCEM (TM) SYSTEM (452990)	402.0	sacks	14.2	1.53	7.63	5.0	7.63
7.63 Gal		FRESH WATER							
Calculated Values		Pressures		Volumes					
Displacement		Shut In: Instant		Lost Returns		Cement Slurry		Pad	
Top Of Cement		5 Min		Cement Returns		Actual Displacement		80.2 Treatment	
Frac Gradient		15 Min		Spacers		Load and Breakdown		Total Job	
Rates									
Circulating		Mixing		Displacement		Avg. Job			
Cement Left In Pipe		Amount	42 ft	Reason	Shoe Joint				
Frac Ring # 1 @	ID	Frac ring # 2 @	ID	Frac Ring # 3 @	ID	Frac Ring # 4 @	ID		
The Information Stated Herein Is Correct				Customer Representative Signature					

