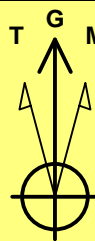


Weld Co., Co (NAD 83) Xcel 13-27HZ Pad Xcel 22C-22HZ Extreme 23 Plan #5

SITE DETAILS: Xcel 13-27HZ Pad

Site Centre Northing: 1249341.00
Easting: 3172361.42
Positional Uncertainty: 0.0
Convergence: 0.40
Local North: Grid

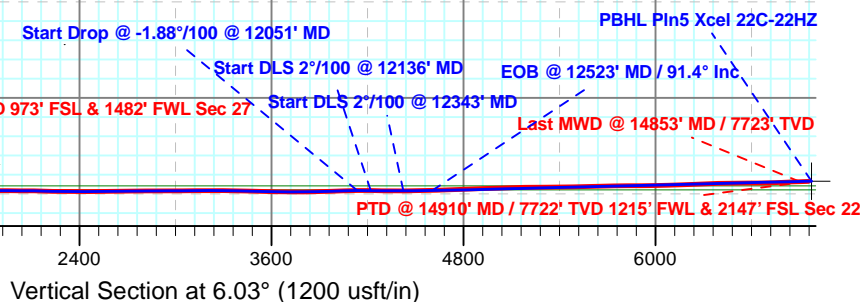
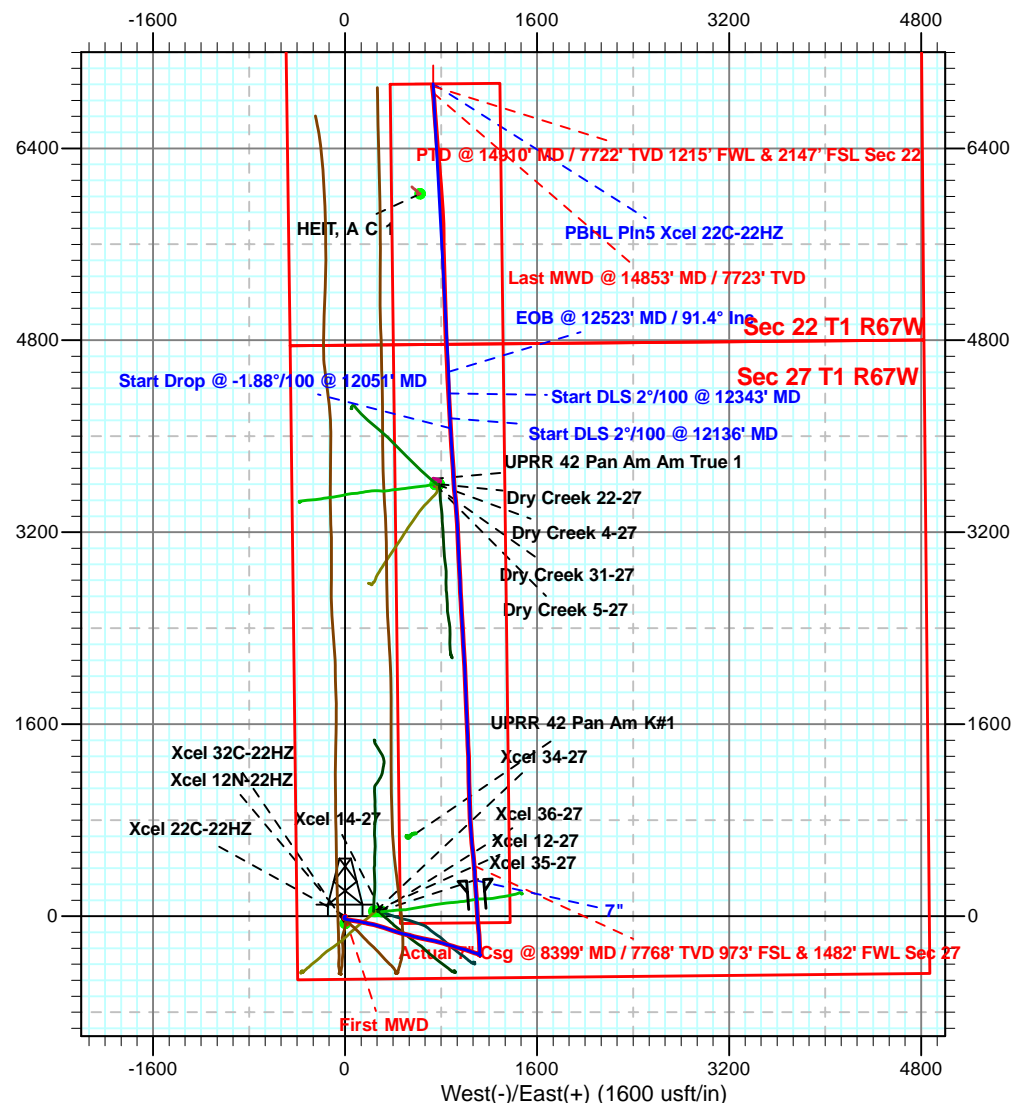
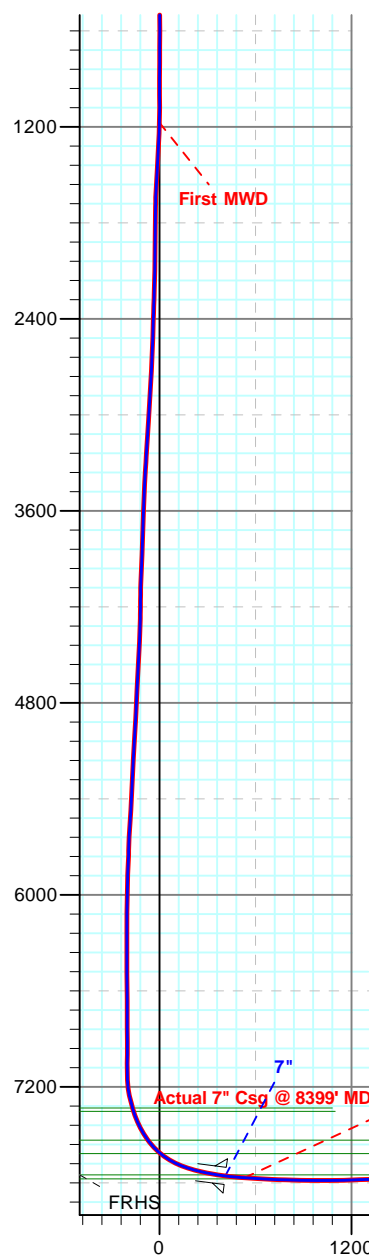


Azimuths to Grid North
Convergence: 0.40°
Total Correction: 8.17°

Magnetic Field
Strength: 52655.0snT
Dip Angle: 66.64°
Date: 12/3/2013
Model: IGRF2010

SECTION DETAILS

MD	Inc	Azi	TVD	+N/-S	+E/-W	Dleg	TFace	VSect	Target
12051.0	90.80	356.00	7779.2	4066.0	879.5	0.00	0.00	4135.9	
12136.0	89.20	356.00	7779.2	4150.8	873.6	1.88	180.00	4219.6	
12342.5	89.70	0.10	7781.1	4357.2	866.6	2.00	83.07	4424.1	
12522.6	91.40	356.93	7779.4	4537.1	861.9	2.00	-61.75	4602.6	
14925.9	91.40	356.93	7720.5	6936.3	733.1	0.00	0.00	6975.0	PBHL Pln5 Xcel 22C-22HZ





Anadarko

Weld Co., Co (NAD 83)

Xcel 13-27HZ Pad

Xcel 22C-22HZ

Wellbore #1

Design: OH

Survey Report - Geographic

04 February, 2014



Company:	Anadarko	Local Co-ordinate Reference:	Well Xcel 22C-22HZ
Project:	Weld Co., Co (NAD 83)	TVD Reference:	Well @ 5042.0usft (Extreme 23)
Site:	Xcel 13-27HZ Pad	MD Reference:	Well @ 5042.0usft (Extreme 23)
Well:	Xcel 22C-22HZ	North Reference:	Grid
Wellbore:	Wellbore #1	Survey Calculation Method:	Minimum Curvature
Design:	OH	Database:	EDM 5000.1 Single User Db

Project	Weld Co., Co (NAD 83)		
Map System:	US State Plane 1983	System Datum:	Mean Sea Level
Geo Datum:	North American Datum 1983		
Map Zone:	Colorado Northern Zone		

Site		Xcel 13-27HZ Pad			
Site Position:		Northing:	1,249,340.99 usft	Latitude:	40° 0' 58.269 N
From:	Lat/Long	Easting:	3,172,361.42 usft	Longitude:	104° 53' 4.596 W
Position Uncertainty:	0.0 usft	Slot Radius:	13-3/16 "	Grid Convergence:	0.40 °

Well	Xcel 22C-22HZ					
Well Position	+N-S	0.0 usft	Northing:	1,249,370.91 usft	Latitude:	40° 0' 58.565 N
	+E-W	0.0 usft	Easting:	3,172,361.21 usft	Longitude:	104° 53' 4.596 W
Position Uncertainty		0.0 usft	Wellhead Elevation:	0.0 usft	Ground Level:	5,026.0 usft

Wellbore	Wellbore #1				
Magnetics	Model Name	Sample Date	Declination (°)	Dip Angle (°)	Field Strength (nT)
	IGRF2010	12/3/2013	8.56	66.64	52,655

Design	OH				
Audit Notes:					
Version:	1.0	Phase:	ACTUAL	Tie On Depth:	0.0
Vertical Section:	Depth From (TVD) (usft)	+N/-S (usft)	+E/-W (usft)	Direction (°)	
	0.0	0.0	0.0	6.03	

Survey Program	Date	2/4/2014			
From (usft)	To (usft)	Survey (Wellbore)	Tool Name	Description	
100.0	1,010.0	Survey #1 (Wellbore #1)	CT_GYRO_MS	Continuous Gyro Multishot	
1,173.0	14,910.0	Survey #2 (Wellbore #1)	MWD	MWD - Standard	

Survey										
Measured Depth (usft)	Inclination (°)	Azimuth (°)	Vertical Depth (usft)	+N/-S (usft)	+E/-W (usft)	Map Northing (usft)	Map Easting (usft)	Latitude	Longitude	
0.0	0.00	0.00	0.0	0.0	0.0	1,249,370.91	3,172,361.21	40° 0' 58.565 N	104° 53' 4.596 W	
100.0	0.53	131.69	100.0	-0.3	0.3	1,249,370.60	3,172,361.56	40° 0' 58.562 N	104° 53' 4.592 W	
200.0	0.52	72.63	200.0	-0.5	1.1	1,249,370.43	3,172,362.33	40° 0' 58.560 N	104° 53' 4.582 W	
300.0	0.52	60.94	300.0	-0.1	2.0	1,249,370.79	3,172,363.16	40° 0' 58.563 N	104° 53' 4.571 W	
400.0	0.47	24.12	400.0	0.5	2.5	1,249,371.38	3,172,363.73	40° 0' 58.569 N	104° 53' 4.564 W	
500.0	0.34	5.40	500.0	1.1	2.7	1,249,372.05	3,172,363.92	40° 0' 58.576 N	104° 53' 4.561 W	
600.0	0.31	258.38	600.0	1.4	2.5	1,249,372.29	3,172,363.69	40° 0' 58.578 N	104° 53' 4.564 W	
700.0	0.44	238.80	700.0	1.1	1.9	1,249,372.04	3,172,363.09	40° 0' 58.576 N	104° 53' 4.572 W	
800.0	0.70	240.97	800.0	0.6	1.0	1,249,371.54	3,172,362.23	40° 0' 58.571 N	104° 53' 4.583 W	
900.0	0.49	239.60	900.0	0.1	0.1	1,249,371.03	3,172,361.33	40° 0' 58.566 N	104° 53' 4.594 W	
1,000.0	0.58	228.65	1,000.0	-0.4	-0.6	1,249,370.48	3,172,360.58	40° 0' 58.560 N	104° 53' 4.604 W	

Company:	Anadarko	Local Co-ordinate Reference:	Well Xcel 22C-22HZ
Project:	Weld Co., Co (NAD 83)	TVD Reference:	Well @ 5042.0usft (Extreme 23)
Site:	Xcel 13-27HZ Pad	MD Reference:	Well @ 5042.0usft (Extreme 23)
Well:	Xcel 22C-22HZ	North Reference:	Grid
Wellbore:	Wellbore #1	Survey Calculation Method:	Minimum Curvature
Design:	OH	Database:	EDM 5000.1 Single User Db

Survey									
Measured Depth (usft)	Inclination (°)	Azimuth (°)	Vertical Depth (usft)	+N/-S (usft)	+E/-W (usft)	Map Northing (usft)	Map Easting (usft)	Latitude	Longitude
1,010.0	0.53	208.66	1,010.0	-0.5	-0.7	1,249,370.41	3,172,360.52	40° 0' 58.560 N	104° 53' 4.605 W
1,173.0	0.70	259.20	1,173.0	-1.4	-2.0	1,249,369.56	3,172,359.18	40° 0' 58.551 N	104° 53' 4.622 W
First MWD									
1,267.0	2.50	227.50	1,266.9	-2.8	-4.1	1,249,368.07	3,172,357.10	40° 0' 58.537 N	104° 53' 4.649 W
1,360.0	4.40	217.90	1,359.7	-7.0	-7.8	1,249,363.88	3,172,353.42	40° 0' 58.496 N	104° 53' 4.697 W
1,454.0	3.90	173.40	1,453.5	-13.1	-9.6	1,249,357.86	3,172,351.57	40° 0' 58.436 N	104° 53' 4.721 W
1,550.0	4.80	140.20	1,549.3	-19.4	-6.7	1,249,351.53	3,172,354.52	40° 0' 58.374 N	104° 53' 4.684 W
1,642.0	6.50	107.10	1,640.8	-23.9	0.7	1,249,347.04	3,172,361.96	40° 0' 58.329 N	104° 53' 4.589 W
1,734.0	8.60	101.20	1,732.0	-26.7	12.5	1,249,344.17	3,172,373.68	40° 0' 58.300 N	104° 53' 4.438 W
1,826.0	10.40	99.00	1,822.8	-29.4	27.4	1,249,341.53	3,172,388.64	40° 0' 58.272 N	104° 53' 4.246 W
1,919.0	12.50	98.30	1,913.9	-32.1	45.7	1,249,338.77	3,172,406.89	40° 0' 58.244 N	104° 53' 4.012 W
2,013.0	15.10	98.70	2,005.2	-35.5	67.8	1,249,335.45	3,172,429.06	40° 0' 58.210 N	104° 53' 3.727 W
2,106.0	16.00	100.30	2,094.8	-39.6	92.4	1,249,331.32	3,172,453.65	40° 0' 58.167 N	104° 53' 3.411 W
2,200.0	17.80	99.00	2,184.7	-44.2	119.4	1,249,326.76	3,172,480.58	40° 0' 58.120 N	104° 53' 3.066 W
2,293.0	16.70	104.50	2,273.5	-49.7	146.4	1,249,321.19	3,172,507.56	40° 0' 58.063 N	104° 53' 2.719 W
2,386.0	15.30	103.10	2,362.9	-55.8	171.2	1,249,315.06	3,172,532.45	40° 0' 58.001 N	104° 53' 2.400 W
2,480.0	16.50	101.50	2,453.3	-61.3	196.4	1,249,309.59	3,172,557.61	40° 0' 57.945 N	104° 53' 2.077 W
2,573.0	16.70	102.20	2,542.5	-66.8	222.4	1,249,304.13	3,172,583.62	40° 0' 57.889 N	104° 53' 1.743 W
2,667.0	17.80	105.20	2,632.2	-73.4	249.5	1,249,297.51	3,172,610.68	40° 0' 57.822 N	104° 53' 1.396 W
2,760.0	16.40	101.50	2,721.1	-79.7	276.1	1,249,291.17	3,172,637.27	40° 0' 57.758 N	104° 53' 1.055 W
2,853.0	16.20	110.30	2,810.4	-86.9	301.1	1,249,284.05	3,172,662.30	40° 0' 57.686 N	104° 53' 0.734 W
2,947.0	15.80	108.70	2,900.8	-95.5	325.5	1,249,275.39	3,172,686.72	40° 0' 57.598 N	104° 53' 0.421 W
3,040.0	16.70	108.50	2,990.0	-103.8	350.2	1,249,267.09	3,172,711.39	40° 0' 57.515 N	104° 53' 0.104 W
3,134.0	17.60	108.70	3,079.9	-112.7	376.4	1,249,258.25	3,172,737.66	40° 0' 57.425 N	104° 52' 59.768 W
3,228.0	17.10	107.30	3,169.6	-121.3	403.1	1,249,249.59	3,172,764.32	40° 0' 57.338 N	104° 52' 59.426 W
3,320.0	15.30	107.10	3,257.9	-128.9	427.6	1,249,241.99	3,172,788.83	40° 0' 57.261 N	104° 52' 59.111 W
3,406.0	16.70	108.00	3,340.6	-136.1	450.2	1,249,234.84	3,172,811.43	40° 0' 57.189 N	104° 52' 58.822 W
3,491.0	16.00	108.00	3,422.2	-143.5	473.0	1,249,227.45	3,172,834.19	40° 0' 57.114 N	104° 52' 58.530 W
3,576.0	16.40	102.70	3,503.8	-149.7	495.8	1,249,221.19	3,172,857.04	40° 0' 57.051 N	104° 52' 58.237 W
3,662.0	14.60	99.90	3,586.7	-154.3	518.3	1,249,216.65	3,172,879.56	40° 0' 57.005 N	104° 52' 57.948 W
3,747.0	14.60	105.00	3,668.9	-158.9	539.3	1,249,212.04	3,172,900.46	40° 0' 56.958 N	104° 52' 57.679 W
3,832.0	16.00	106.60	3,750.9	-165.0	560.8	1,249,205.92	3,172,922.04	40° 0' 56.896 N	104° 52' 57.403 W
3,917.0	14.30	105.20	3,832.9	-171.1	582.2	1,249,199.82	3,172,943.40	40° 0' 56.834 N	104° 52' 57.129 W
4,003.0	15.00	102.90	3,916.2	-176.4	603.3	1,249,194.55	3,172,964.49	40° 0' 56.780 N	104° 52' 56.858 W
4,088.0	15.10	103.60	3,998.2	-181.4	624.8	1,249,189.49	3,172,985.98	40° 0' 56.729 N	104° 52' 56.582 W
4,174.0	12.50	102.60	4,081.7	-186.1	644.7	1,249,184.83	3,173,005.95	40° 0' 56.681 N	104° 52' 56.326 W
4,259.0	14.10	99.40	4,164.5	-189.8	663.9	1,249,181.13	3,173,025.14	40° 0' 56.643 N	104° 52' 56.080 W
4,344.0	15.30	97.10	4,246.7	-192.9	685.3	1,249,178.05	3,173,046.49	40° 0' 56.612 N	104° 52' 55.806 W
4,429.0	17.40	103.30	4,328.2	-197.2	708.8	1,249,173.74	3,173,069.99	40° 0' 56.567 N	104° 52' 55.504 W
4,514.0	17.80	102.70	4,409.3	-203.0	733.8	1,249,167.96	3,173,095.03	40° 0' 56.509 N	104° 52' 55.182 W
4,600.0	18.50	105.90	4,491.0	-209.6	759.8	1,249,161.33	3,173,120.98	40° 0' 56.441 N	104° 52' 54.850 W
4,685.0	17.20	105.20	4,571.9	-216.6	784.9	1,249,154.34	3,173,146.08	40° 0' 56.370 N	104° 52' 54.528 W
4,770.0	14.80	104.30	4,653.6	-222.5	807.5	1,249,148.37	3,173,168.73	40° 0' 56.310 N	104° 52' 54.237 W
4,856.0	15.10	109.10	4,736.7	-228.9	828.7	1,249,141.99	3,173,189.96	40° 0' 56.245 N	104° 52' 53.965 W
4,941.0	16.00	104.80	4,818.6	-235.5	850.5	1,249,135.37	3,173,211.75	40° 0' 56.178 N	104° 52' 53.685 W
5,026.0	17.10	105.90	4,900.1	-242.0	873.9	1,249,128.95	3,173,235.09	40° 0' 56.113 N	104° 52' 53.386 W
5,112.0	17.90	105.90	4,982.1	-249.0	898.8	1,249,121.87	3,173,259.96	40° 0' 56.042 N	104° 52' 53.067 W
5,197.0	18.80	106.60	5,062.8	-256.5	924.4	1,249,114.38	3,173,285.65	40° 0' 55.966 N	104° 52' 52.737 W
5,282.0	17.40	107.30	5,143.5	-264.2	949.7	1,249,106.69	3,173,310.91	40° 0' 55.888 N	104° 52' 52.413 W
5,368.0	14.80	106.60	5,226.2	-271.2	972.5	1,249,099.72	3,173,333.72	40° 0' 55.818 N	104° 52' 52.121 W
5,453.0	15.70	102.60	5,308.2	-276.8	994.1	1,249,094.11	3,173,355.35	40° 0' 55.761 N	104° 52' 51.843 W
5,538.0	16.20	107.30	5,389.9	-282.8	1,016.7	1,249,088.08	3,173,377.89	40° 0' 55.700 N	104° 52' 51.554 W
5,624.0	16.00	109.60	5,472.5	-290.4	1,039.3	1,249,080.53	3,173,400.51	40° 0' 55.624 N	104° 52' 51.264 W
5,709.0	14.40	109.80	5,554.6	-297.9	1,060.3	1,249,073.02	3,173,421.50	40° 0' 55.548 N	104° 52' 50.995 W
5,795.0	12.50	109.60	5,638.2	-304.6	1,079.1	1,249,066.28	3,173,440.33	40° 0' 55.480 N	104° 52' 50.754 W

Company:	Anadarko	Local Co-ordinate Reference:	Well Xcel 22C-22HZ
Project:	Weld Co., Co (NAD 83)	TVD Reference:	Well @ 5042.0usft (Extreme 23)
Site:	Xcel 13-27HZ Pad	MD Reference:	Well @ 5042.0usft (Extreme 23)
Well:	Xcel 22C-22HZ	North Reference:	Grid
Wellbore:	Wellbore #1	Survey Calculation Method:	Minimum Curvature
Design:	OH	Database:	EDM 5000.1 Single User Db

Survey									
Measured Depth (usft)	Inclination (°)	Azimuth (°)	Vertical Depth (usft)	+N/-S (usft)	+E/-W (usft)	Map Northing (usft)	Map Easting (usft)	Latitude	Longitude
5,880.0	10.40	105.90	5,721.5	-309.8	1,095.2	1,249,061.09	3,173,456.37	40° 0' 55.427 N	104° 52' 50.548 W
5,965.0	8.10	113.10	5,805.4	-314.3	1,108.1	1,249,056.64	3,173,469.26	40° 0' 55.383 N	104° 52' 50.383 W
6,051.0	4.80	115.00	5,890.8	-318.2	1,116.9	1,249,052.74	3,173,478.10	40° 0' 55.343 N	104° 52' 50.269 W
6,136.0	2.80	123.80	5,975.6	-320.8	1,121.8	1,249,050.08	3,173,483.05	40° 0' 55.317 N	104° 52' 50.206 W
6,221.0	1.20	149.70	6,060.6	-322.8	1,124.0	1,249,048.16	3,173,485.22	40° 0' 55.298 N	104° 52' 50.178 W
6,307.0	0.50	151.40	6,146.6	-323.9	1,124.6	1,249,047.05	3,173,485.86	40° 0' 55.287 N	104° 52' 50.170 W
6,392.0	0.20	334.10	6,231.6	-324.1	1,124.8	1,249,046.86	3,173,485.97	40° 0' 55.285 N	104° 52' 50.169 W
6,477.0	0.00	1.30	6,316.6	-323.9	1,124.7	1,249,046.99	3,173,485.90	40° 0' 55.286 N	104° 52' 50.170 W
6,563.0	0.20	220.30	6,402.6	-324.0	1,124.6	1,249,046.88	3,173,485.81	40° 0' 55.285 N	104° 52' 50.171 W
6,648.0	0.50	317.00	6,487.6	-323.9	1,124.2	1,249,047.04	3,173,485.46	40° 0' 55.287 N	104° 52' 50.175 W
6,733.0	0.90	349.40	6,572.6	-322.9	1,123.9	1,249,047.96	3,173,485.08	40° 0' 55.296 N	104° 52' 50.180 W
6,818.0	0.40	312.40	6,657.6	-322.1	1,123.5	1,249,048.82	3,173,484.74	40° 0' 55.304 N	104° 52' 50.184 W
6,904.0	0.40	312.40	6,743.6	-321.7	1,123.1	1,249,049.22	3,173,484.30	40° 0' 55.308 N	104° 52' 50.190 W
6,989.0	0.50	36.10	6,828.6	-321.2	1,123.1	1,249,049.72	3,173,484.30	40° 0' 55.313 N	104° 52' 50.190 W
7,074.0	0.40	11.30	6,913.6	-320.6	1,123.4	1,249,050.31	3,173,484.57	40° 0' 55.319 N	104° 52' 50.186 W
7,159.0	0.50	209.80	6,998.6	-320.6	1,123.2	1,249,050.28	3,173,484.45	40° 0' 55.319 N	104° 52' 50.188 W
7,222.0	0.50	230.50	7,061.6	-321.0	1,122.9	1,249,049.87	3,173,484.10	40° 0' 55.315 N	104° 52' 50.193 W
7,245.0	0.70	187.80	7,084.6	-321.2	1,122.8	1,249,049.67	3,173,484.00	40° 0' 55.313 N	104° 52' 50.194 W
7,288.0	1.20	317.90	7,127.6	-321.2	1,122.5	1,249,049.74	3,173,483.66	40° 0' 55.313 N	104° 52' 50.198 W
7,330.0	4.00	346.70	7,169.5	-319.4	1,121.8	1,249,051.49	3,173,483.03	40° 0' 55.331 N	104° 52' 50.206 W
7,373.0	7.90	0.10	7,212.3	-315.0	1,121.5	1,249,055.91	3,173,482.69	40° 0' 55.374 N	104° 52' 50.210 W
7,415.0	12.50	1.50	7,253.6	-307.6	1,121.6	1,249,063.34	3,173,482.82	40° 0' 55.448 N	104° 52' 50.208 W
7,458.0	13.50	1.50	7,295.5	-297.9	1,121.9	1,249,073.01	3,173,483.07	40° 0' 55.543 N	104° 52' 50.204 W
7,495.8	16.05	0.42	7,332.0	-288.3	1,122.0	1,249,082.64	3,173,483.22	40° 0' 55.639 N	104° 52' 50.201 W
SSPG									
7,501.0	16.40	0.30	7,337.0	-286.8	1,122.0	1,249,084.10	3,173,483.23	40° 0' 55.653 N	104° 52' 50.201 W
7,517.7	17.84	359.60	7,353.0	-281.9	1,122.0	1,249,089.02	3,173,483.23	40° 0' 55.702 N	104° 52' 50.200 W
NBRR									
7,544.0	20.10	358.70	7,377.9	-273.3	1,121.9	1,249,097.56	3,173,483.10	40° 0' 55.786 N	104° 52' 50.201 W
7,586.0	23.40	356.00	7,416.9	-257.8	1,121.1	1,249,113.10	3,173,482.35	40° 0' 55.940 N	104° 52' 50.209 W
7,629.0	28.50	355.70	7,455.5	-239.0	1,119.8	1,249,131.86	3,173,480.99	40° 0' 56.125 N	104° 52' 50.225 W
7,672.0	31.30	358.20	7,492.8	-217.6	1,118.7	1,249,153.26	3,173,479.86	40° 0' 56.337 N	104° 52' 50.238 W
7,714.0	36.40	358.90	7,527.7	-194.3	1,118.1	1,249,176.64	3,173,479.28	40° 0' 56.568 N	104° 52' 50.243 W
7,720.7	37.08	358.51	7,533.0	-190.3	1,118.0	1,249,180.62	3,173,479.19	40° 0' 56.607 N	104° 52' 50.244 W
N470_B_CK									
7,757.0	40.80	356.60	7,561.3	-167.5	1,117.0	1,249,203.44	3,173,478.20	40° 0' 56.833 N	104° 52' 50.254 W
7,800.0	46.10	354.50	7,592.5	-138.0	1,114.7	1,249,232.90	3,173,475.88	40° 0' 57.124 N	104° 52' 50.282 W
7,835.5	50.74	354.16	7,616.0	-111.6	1,112.0	1,249,259.30	3,173,473.26	40° 0' 57.385 N	104° 52' 50.313 W
N700_C_CK									
7,842.0	51.60	354.10	7,620.1	-106.5	1,111.5	1,249,264.36	3,173,472.74	40° 0' 57.435 N	104° 52' 50.319 W
7,885.0	57.20	355.20	7,645.1	-71.8	1,108.3	1,249,299.16	3,173,469.49	40° 0' 57.779 N	104° 52' 50.358 W
7,928.0	61.40	355.50	7,667.1	-34.9	1,105.3	1,249,336.00	3,173,466.50	40° 0' 58.144 N	104° 52' 50.393 W
7,970.0	66.90	356.00	7,685.4	2.8	1,102.5	1,249,373.68	3,173,463.70	40° 0' 58.516 N	104° 52' 50.426 W
8,013.0	71.10	356.20	7,700.8	42.8	1,099.8	1,249,413.72	3,173,460.97	40° 0' 58.912 N	104° 52' 50.457 W
8,056.0	74.10	356.70	7,713.6	83.8	1,097.2	1,249,454.67	3,173,458.43	40° 0' 59.317 N	104° 52' 50.486 W
8,098.0	76.00	357.30	7,724.5	124.3	1,095.1	1,249,495.19	3,173,456.31	40° 0' 59.717 N	104° 52' 50.510 W
8,141.0	77.80	356.70	7,734.2	166.1	1,092.9	1,249,537.01	3,173,454.12	40° 1' 0.131 N	104° 52' 50.534 W
8,184.0	79.40	356.20	7,742.7	208.2	1,090.3	1,249,579.08	3,173,451.51	40° 1' 0.547 N	104° 52' 50.564 W
8,226.0	81.10	356.40	7,749.8	249.5	1,087.6	1,249,620.39	3,173,448.84	40° 1' 0.955 N	104° 52' 50.595 W
8,227.1	81.14	356.38	7,750.0	250.6	1,087.6	1,249,621.48	3,173,448.77	40° 1' 0.966 N	104° 52' 50.595 W
FRHS									
8,269.0	82.70	355.70	7,755.9	291.9	1,084.7	1,249,662.86	3,173,445.90	40° 1' 1.375 N	104° 52' 50.628 W
8,312.0	84.10	355.90	7,760.8	334.5	1,081.6	1,249,705.46	3,173,442.78	40° 1' 1.796 N	104° 52' 50.665 W
8,356.0	85.70	356.00	7,764.7	378.3	1,078.5	1,249,749.17	3,173,439.68	40° 1' 2.229 N	104° 52' 50.701 W

Company:	Anadarko	Local Co-ordinate Reference:	Well Xcel 22C-22HZ
Project:	Weld Co., Co (NAD 83)	TVD Reference:	Well @ 5042.0usft (Extreme 23)
Site:	Xcel 13-27HZ Pad	MD Reference:	Well @ 5042.0usft (Extreme 23)
Well:	Xcel 22C-22HZ	North Reference:	Grid
Wellbore:	Wellbore #1	Survey Calculation Method:	Minimum Curvature
Design:	OH	Database:	EDM 5000.1 Single User Db

Survey									
Measured Depth (usft)	Inclination (°)	Azimuth (°)	Vertical Depth (usft)	+N/-S (usft)	+E/-W (usft)	Map Northing (usft)	Map Easting (usft)	Latitude	Longitude
8,362.0	85.90	356.00	7,765.2	384.2	1,078.1	1,249,755.14	3,173,439.26	40° 1' 2.288 N	104° 52' 50.705 W
8,399.0	86.24	355.04	7,767.7	421.0	1,075.2	1,249,791.94	3,173,436.38	40° 1' 2.651 N	104° 52' 50.739 W
Actual 7" Csg @ 8399' MD / 7768' TVD 973' FSL & 1482' FWL Sec 27									
8,416.0	86.40	354.60	7,768.8	437.9	1,073.6	1,249,808.84	3,173,434.85	40° 1' 2.819 N	104° 52' 50.757 W
8,478.0	86.60	355.00	7,772.6	499.6	1,068.0	1,249,870.47	3,173,429.24	40° 1' 3.428 N	104° 52' 50.824 W
8,520.6	86.92	354.77	7,775.0	542.0	1,064.2	1,249,912.87	3,173,425.44	40° 1' 3.847 N	104° 52' 50.869 W
CDLL									
8,570.0	87.30	354.50	7,777.5	591.0	1,059.6	1,249,961.95	3,173,420.83	40° 1' 4.333 N	104° 52' 50.924 W
8,663.0	88.30	355.00	7,781.1	683.6	1,051.1	1,250,054.49	3,173,412.33	40° 1' 5.248 N	104° 52' 51.025 W
8,756.0	88.90	355.50	7,783.3	776.2	1,043.4	1,250,147.14	3,173,404.63	40° 1' 6.164 N	104° 52' 51.115 W
8,848.0	89.70	357.30	7,784.5	868.0	1,037.6	1,250,238.95	3,173,398.86	40° 1' 7.072 N	104° 52' 51.181 W
8,939.0	90.10	359.00	7,784.6	959.0	1,034.7	1,250,329.90	3,173,395.92	40° 1' 7.971 N	104° 52' 51.211 W
9,030.0	91.80	359.70	7,783.1	1,050.0	1,033.7	1,250,420.88	3,173,394.89	40° 1' 8.870 N	104° 52' 51.216 W
9,122.0	91.80	359.60	7,780.2	1,141.9	1,033.1	1,250,512.83	3,173,394.32	40° 1' 9.778 N	104° 52' 51.215 W
9,214.0	91.00	358.90	7,778.0	1,233.9	1,031.9	1,250,604.79	3,173,393.12	40° 1' 10.687 N	104° 52' 51.222 W
9,310.0	89.60	356.70	7,777.5	1,329.8	1,028.2	1,250,700.71	3,173,389.44	40° 1' 11.636 N	104° 52' 51.261 W
9,405.0	89.40	357.40	7,778.3	1,424.7	1,023.3	1,250,795.58	3,173,384.55	40° 1' 12.573 N	104° 52' 51.315 W
9,491.0	89.00	357.30	7,779.5	1,510.6	1,019.4	1,250,881.48	3,173,380.57	40° 1' 13.423 N	104° 52' 51.359 W
9,576.0	89.70	357.60	7,780.5	1,595.5	1,015.6	1,250,966.39	3,173,376.79	40° 1' 14.262 N	104° 52' 51.400 W
9,661.0	90.60	358.30	7,780.2	1,680.4	1,012.5	1,251,051.33	3,173,373.75	40° 1' 15.102 N	104° 52' 51.431 W
9,746.0	90.40	358.20	7,779.5	1,765.4	1,009.9	1,251,136.29	3,173,371.15	40° 1' 15.941 N	104° 52' 51.457 W
9,832.0	89.40	357.60	7,779.6	1,851.3	1,006.8	1,251,222.23	3,173,368.00	40° 1' 16.791 N	104° 52' 51.490 W
9,917.0	89.00	357.40	7,780.8	1,936.2	1,003.1	1,251,307.14	3,173,364.29	40° 1' 17.630 N	104° 52' 51.530 W
10,003.0	90.10	357.30	7,781.5	2,022.1	999.1	1,251,393.05	3,173,360.32	40° 1' 18.479 N	104° 52' 51.573 W
10,088.0	88.30	356.90	7,782.7	2,107.0	994.8	1,251,477.93	3,173,356.02	40° 1' 19.319 N	104° 52' 51.621 W
10,173.0	88.70	356.70	7,784.9	2,191.9	990.1	1,251,562.76	3,173,351.28	40° 1' 20.157 N	104° 52' 51.674 W
10,258.0	89.90	356.60	7,786.0	2,276.7	985.1	1,251,647.61	3,173,346.31	40° 1' 20.996 N	104° 52' 51.730 W
10,343.0	91.10	356.60	7,785.2	2,361.5	980.1	1,251,732.46	3,173,341.27	40° 1' 21.835 N	104° 52' 51.788 W
10,429.0	91.00	356.70	7,783.6	2,447.4	975.0	1,251,818.30	3,173,336.24	40° 1' 22.684 N	104° 52' 51.844 W
10,514.0	89.70	356.40	7,783.1	2,532.2	969.9	1,251,903.14	3,173,331.13	40° 1' 23.522 N	104° 52' 51.903 W
10,599.0	90.30	357.40	7,783.1	2,617.1	965.3	1,251,988.01	3,173,326.53	40° 1' 24.362 N	104° 52' 51.954 W
10,684.0	91.00	357.10	7,782.2	2,702.0	961.2	1,252,072.91	3,173,322.45	40° 1' 25.201 N	104° 52' 51.999 W
10,770.0	89.90	357.10	7,781.5	2,787.9	956.9	1,252,158.79	3,173,318.10	40° 1' 26.050 N	104° 52' 52.047 W
10,855.0	90.30	358.00	7,781.3	2,872.8	953.3	1,252,243.72	3,173,314.47	40° 1' 26.889 N	104° 52' 52.086 W
10,941.0	90.80	357.40	7,780.5	2,958.7	949.8	1,252,329.64	3,173,311.02	40° 1' 27.739 N	104° 52' 52.123 W
11,026.0	90.10	356.90	7,779.8	3,043.6	945.6	1,252,414.53	3,173,306.79	40° 1' 28.578 N	104° 52' 52.170 W
11,112.0	90.30	358.20	7,779.5	3,129.5	941.9	1,252,500.45	3,173,303.12	40° 1' 29.427 N	104° 52' 52.209 W
11,197.0	89.70	356.70	7,779.5	3,214.5	938.1	1,252,585.36	3,173,299.34	40° 1' 30.267 N	104° 52' 52.250 W
11,282.0	88.90	356.20	7,780.6	3,299.3	932.9	1,252,670.19	3,173,294.07	40° 1' 31.105 N	104° 52' 52.310 W
11,368.0	88.70	355.70	7,782.4	3,385.0	926.8	1,252,755.96	3,173,288.00	40° 1' 31.953 N	104° 52' 52.381 W
11,453.0	88.30	353.90	7,784.6	3,469.7	919.1	1,252,840.58	3,173,280.30	40° 1' 32.790 N	104° 52' 52.472 W
11,539.0	88.70	353.80	7,786.9	3,555.1	909.9	1,252,926.05	3,173,271.09	40° 1' 33.635 N	104° 52' 52.583 W
11,624.0	89.90	358.70	7,787.9	3,639.9	904.3	1,253,010.84	3,173,265.53	40° 1' 34.474 N	104° 52' 52.646 W
11,709.0	91.10	355.50	7,787.1	3,724.8	900.0	1,253,095.71	3,173,261.23	40° 1' 35.313 N	104° 52' 52.694 W
11,795.0	91.30	355.30	7,785.3	3,810.5	893.1	1,253,181.42	3,173,254.34	40° 1' 36.160 N	104° 52' 52.775 W
11,880.0	92.00	357.40	7,782.9	3,895.3	887.7	1,253,266.20	3,173,248.93	40° 1' 36.998 N	104° 52' 52.837 W
11,966.0	91.10	357.80	7,780.6	3,981.2	884.1	1,253,352.10	3,173,245.33	40° 1' 37.848 N	104° 52' 52.876 W
12,051.0	90.80	356.00	7,779.2	4,066.0	879.5	1,253,436.96	3,173,240.73	40° 1' 38.686 N	104° 52' 52.927 W
12,136.0	89.20	356.00	7,779.2	4,150.8	873.6	1,253,521.75	3,173,234.80	40° 1' 39.525 N	104° 52' 52.996 W
12,222.0	89.70	357.60	7,780.0	4,236.7	868.8	1,253,607.61	3,173,230.00	40° 1' 40.374 N	104° 52' 53.050 W
12,307.0	89.70	357.30	7,780.4	4,321.6	865.0	1,253,692.52	3,173,226.22	40° 1' 41.213 N	104° 52' 53.091 W
12,393.0	90.30	356.40	7,780.4	4,407.5	860.3	1,253,778.39	3,173,221.50	40° 1' 42.062 N	104° 52' 53.144 W
12,478.0	91.10	356.70	7,779.4	4,492.3	855.2	1,253,863.23	3,173,216.38	40° 1' 42.901 N	104° 52' 53.202 W
12,563.0	91.80	358.50	7,777.2	4,577.2	851.6	1,253,948.12	3,173,212.82	40° 1' 43.740 N	104° 52' 53.240 W
12,649.0	92.40	357.60	7,774.1	4,663.1	848.7	1,254,034.01	3,173,209.90	40° 1' 44.589 N	104° 52' 53.270 W

Company:	Anadarko	Local Co-ordinate Reference:	Well Xcel 22C-22HZ
Project:	Weld Co., Co (NAD 83)	TVD Reference:	Well @ 5042.0usft (Extreme 23)
Site:	Xcel 13-27HZ Pad	MD Reference:	Well @ 5042.0usft (Extreme 23)
Well:	Xcel 22C-22HZ	North Reference:	Grid
Wellbore:	Wellbore #1	Survey Calculation Method:	Minimum Curvature
Design:	OH	Database:	EDM 5000.1 Single User Db

Survey									
Measured Depth (usft)	Inclination (°)	Azimuth (°)	Vertical Depth (usft)	+N/-S (usft)	+E/-W (usft)	Map Northing (usft)	Map Easting (usft)	Latitude	Longitude
12,734.0	92.60	356.70	7,770.4	4,747.9	844.5	1,254,118.83	3,173,205.68	40° 1' 45.427 N	104° 52' 53.317 W
12,820.0	92.20	358.50	7,766.8	4,833.8	840.9	1,254,204.67	3,173,202.08	40° 1' 46.276 N	104° 52' 53.355 W
12,905.0	91.80	358.20	7,763.8	4,918.7	838.4	1,254,289.58	3,173,199.63	40° 1' 47.115 N	104° 52' 53.379 W
12,990.0	91.30	357.30	7,761.5	5,003.6	835.1	1,254,374.49	3,173,196.30	40° 1' 47.955 N	104° 52' 53.414 W
13,076.0	90.60	358.50	7,760.1	5,089.5	831.9	1,254,460.42	3,173,193.15	40° 1' 48.804 N	104° 52' 53.447 W
13,161.0	91.10	358.70	7,758.8	5,174.5	829.9	1,254,545.38	3,173,191.07	40° 1' 49.644 N	104° 52' 53.466 W
13,247.0	90.40	358.30	7,757.7	5,260.4	827.6	1,254,631.34	3,173,188.82	40° 1' 50.493 N	104° 52' 53.487 W
13,332.0	90.80	357.40	7,756.8	5,345.4	824.4	1,254,716.28	3,173,185.63	40° 1' 51.333 N	104° 52' 53.521 W
13,417.0	91.30	358.20	7,755.3	5,430.3	821.2	1,254,801.20	3,173,182.37	40° 1' 52.173 N	104° 52' 53.555 W
13,502.0	90.80	358.20	7,753.7	5,515.2	818.5	1,254,886.14	3,173,179.70	40° 1' 53.012 N	104° 52' 53.582 W
13,588.0	91.50	359.90	7,752.0	5,601.2	817.1	1,254,972.11	3,173,178.27	40° 1' 53.862 N	104° 52' 53.592 W
13,673.0	91.10	359.70	7,750.0	5,686.2	816.8	1,255,057.09	3,173,177.98	40° 1' 54.702 N	104° 52' 53.589 W
13,759.0	90.40	357.40	7,748.9	5,772.1	814.6	1,255,143.05	3,173,175.80	40° 1' 55.551 N	104° 52' 53.609 W
13,844.0	90.40	357.10	7,748.3	5,857.0	810.5	1,255,227.95	3,173,171.72	40° 1' 56.391 N	104° 52' 53.654 W
13,929.0	90.60	357.10	7,747.6	5,941.9	806.2	1,255,312.83	3,173,167.42	40° 1' 57.230 N	104° 52' 53.701 W
14,014.0	91.30	355.50	7,746.2	6,026.7	800.7	1,255,397.64	3,173,161.94	40° 1' 58.068 N	104° 52' 53.764 W
14,099.0	92.70	355.20	7,743.2	6,111.4	793.8	1,255,482.31	3,173,155.05	40° 1' 58.905 N	104° 52' 53.845 W
14,185.0	92.40	354.50	7,739.4	6,197.0	786.1	1,255,567.88	3,173,147.34	40° 1' 59.752 N	104° 52' 53.937 W
14,270.0	91.50	356.00	7,736.5	6,281.6	779.1	1,255,652.53	3,173,140.31	40° 2' 0.589 N	104° 52' 54.019 W
14,356.0	91.50	355.30	7,734.2	6,367.3	772.6	1,255,738.25	3,173,133.78	40° 2' 1.436 N	104° 52' 54.096 W
14,441.0	90.80	355.00	7,732.5	6,452.0	765.4	1,255,822.93	3,173,126.60	40° 2' 2.274 N	104° 52' 54.180 W
14,526.0	89.40	355.70	7,732.4	6,536.7	758.5	1,255,907.65	3,173,119.71	40° 2' 3.111 N	104° 52' 54.261 W
14,611.0	91.00	356.20	7,732.1	6,621.5	752.5	1,255,992.43	3,173,113.71	40° 2' 3.950 N	104° 52' 54.331 W
14,697.0	92.20	356.00	7,729.7	6,707.3	746.6	1,256,078.20	3,173,107.86	40° 2' 4.797 N	104° 52' 54.398 W
14,782.0	92.60	356.00	7,726.1	6,792.0	740.7	1,256,162.92	3,173,101.93	40° 2' 5.635 N	104° 52' 54.467 W
14,853.0	91.80	353.60	7,723.4	6,862.7	734.3	1,256,233.57	3,173,095.50	40° 2' 6.334 N	104° 52' 54.543 W
Last MWD @ 14853' MD / 7723' TVD									
14,910.0	91.80	353.60	7,721.6	6,919.3	727.9	1,256,290.18	3,173,089.15	40° 2' 6.894 N	104° 52' 54.620 W
PTD @ 14910' MD / 7722' TVD 1215' FWL & 2147' FSL Sec 22									

Formations						
Measured Depth (usft)	Vertical Depth (usft)	Name	Lithology	Dip (°)	Dip Direction (°)	
7,495.8	7,332.0	SSPG		0.00		
7,517.7	7,353.0	NBRR		0.00		
7,720.7	7,533.0	N470_B_CK		0.00		
7,835.5	7,616.0	N700_C_CK		0.00		
8,227.1	7,750.0	FRHS		0.00		
8,520.6	7,775.0	CDLL		0.00		

Design Annotations				
Measured Depth (usft)	Vertical Depth (usft)	+N/-S (usft)	+E/-W (usft)	Comment
1,173.0	1,173.0	-1.4	-2.0	First MWD
8,399.0	7,767.7	421.0	1,075.2	Actual 7" Csg @ 8399' MD / 7768' TVD 973' FSL & 1482' FWL Sec 27
14,853.0	7,723.4	6,862.7	734.3	Last MWD @ 14853' MD / 7723' TVD
14,910.0	7,721.6	6,919.3	727.9	PTD @ 14910' MD / 7722' TVD 1215' FWL & 2147' FSL Sec 22

Company:	Anadarko	Local Co-ordinate Reference:	Well Xcel 22C-22HZ
Project:	Weld Co., Co (NAD 83)	TVD Reference:	Well @ 5042.0usft (Extreme 23)
Site:	Xcel 13-27HZ Pad	MD Reference:	Well @ 5042.0usft (Extreme 23)
Well:	Xcel 22C-22HZ	North Reference:	Grid
Wellbore:	Wellbore #1	Survey Calculation Method:	Minimum Curvature
Design:	OH	Database:	EDM 5000.1 Single User Db

Checked By: _____	Approved By: _____	Date: _____
-------------------	--------------------	-------------