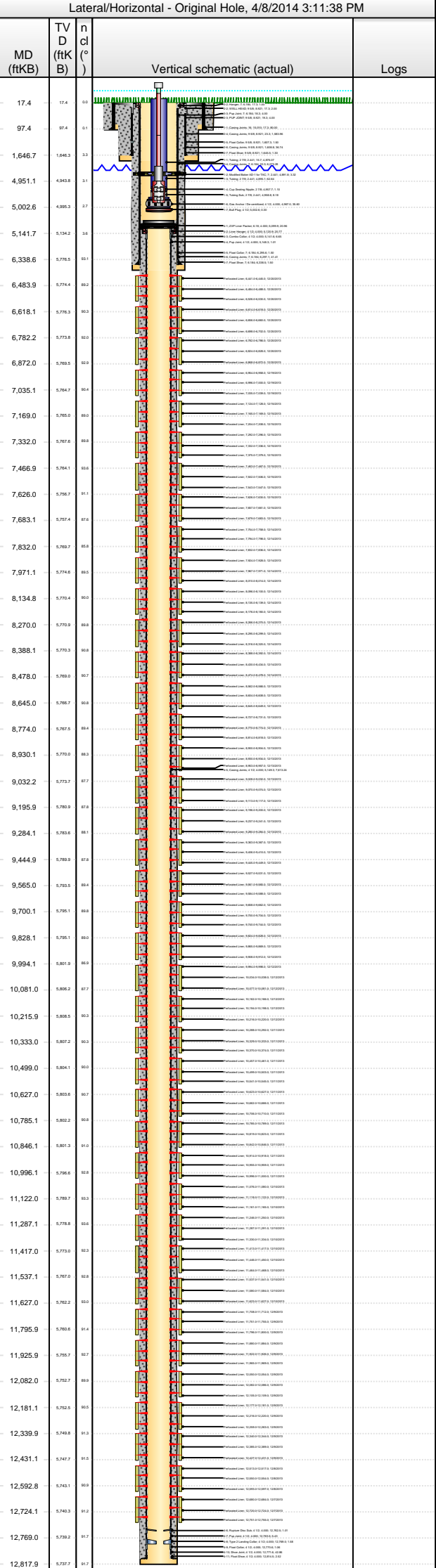




Lease Review All CR

Well Name: RAZOR 21A-2815A

API Number 051233784700		WPC ID 1CO076960		Well Permit Number		Field Name DJ Horizontal Niobrara		County Weld		State CO	
Well Configuration Type Lateral/Horizontal		Orig KB Elv (ft) 4,850.30		Ground Elevation (ft) 4,833.00		Casing Flange Elevation (ft)		Tubing Head Elevation (ft)		Total Depth (ftKB) 12,818.0	
Original Spud Date 10/19/2013		Completion Date 1/16/2014		Asset Group Redtail Asset Group		Responsible Engineer Gary Nordlander		N/S Dist (ft) 330.0		N/S Ref FNL	
E/W Dist (ft) 627.0		E/W Ref FEL		Lot		Quarter 1 NE		Quarter 2 NE		Quarter 3	
Quarter 4		Section 21		Section Suffix		Section Type		Township 10 N		Township N/S Dir	
Range 58		Range E/W Dir W		Meridian 6TH							



Wellbore Name		Start Date	Size (in)	Act Top (ftKB)	Act Btm (ftKB)	
Original Hole		9/2/2013	18 5/8	17.3	97.3	
Original Hole		10/19/2013	13 1/2	97.3	1,660.0	
Original Hole		10/20/2013	8 3/4	1,660.0	6,360.0	
Original Hole		10/24/2013	6	6,360.0	12,818.0	
Conductor Pipe, 97.3ftKB						
OD (in)	Wt (lb/ft)	Grade	Top (ftKB)	Btm (ftKB)	Len (ft)	
16	84.00	J-55	17.3	97.3	80.00	
Surface Csg, 1,646.8ftKB						
OD (in)	Wt (lb/ft)	Grade	Top (ftKB)	Btm (ftKB)	Len (ft)	Item Des
9 5/8	36.00	J-55	17.3	17.3	0.00	LANDING JOINT
9 5/8	36.00	J-55	17.3	19.3	2.00	WELL HEAD
9 5/8	36.00	J-55	19.3	23.3	4.00	PUP JOINT
9 5/8	36.00	J-55	23.3	1,607.3	1,583.96	Casing Joints
9 5/8	36.00	J-55	1,607.3	1,608.8	1.50	Float Collar
9 5/8	36.00	J-55	1,608.8	1,645.5	36.74	Casing Joints
9 5/8	36.00	J-55	1,645.5	1,646.8	1.30	Float Shoe
Intermediate Csg, 6,340.0ftKB						
OD (in)	Wt (lb/ft)	Grade	Top (ftKB)	Btm (ftKB)	Len (ft)	Item Des
7	29.00	L-80	17.3	17.3	0.00	Landing Joint
7	29.00	L-80	17.3	18.3	1.00	Hanger
7	29.00	L-80	18.3	22.3	4.00	Pup Joint
7	29.00	L-80	22.3	6,295.6	6,273.28	Casing Joints
7	29.00	L-80	6,295.6	6,297.1	1.50	Float Collar
7	29.00	L-80	6,297.1	6,338.5	41.41	Casing Joints
7	29.00	L-80	6,338.5	6,340.0	1.50	Float Shoe
Liner, 12,817.0ftKB						
OD (in)	Wt (lb/ft)	Grade	Top (ftKB)	Btm (ftKB)	Len (ft)	Item Des
6.184	11.60	L-80	5,099.9	5,120.9	20.96	ZXP Liner Packer
4 1/2	11.60	L-80	5,120.9	5,141.6	20.77	Liner Hanger
4 1/2	11.60	L-80	5,141.6	5,148.3	6.65	Combo Collar
4 1/2	11.60	L-80	5,148.3	5,149.3	1.01	Pup Joint
4 1/2	11.60	L-80	5,149.3	12,762.5	7,613.24	Casing Joints
4 1/2	11.60	L-80	12,762.5	12,763.6	1.01	Rupture Disc Sub
4 1/2	11.60	L-80	12,763.6	12,769.0	5.43	Pup Joint
4 1/2	11.60	L-80	12,769.0	12,770.6	1.58	Type 2 Landing Collar
4 1/2	11.60	L-80	12,770.6	12,771.6	1.06	Float Collar
4 1/2	11.60	L-80	12,771.6	12,814.5	42.86	Shoe Joint
4 1/2	11.60	L-80	12,814.5	12,817.0	2.52	Float Shoe
Cement Stages						
Des	Pump Start Date	Drill Out Date	Top (ftKB)	Btm (ftKB)	Top Meas Meth	
Conductor Cement	9/8/2013		17.3	97.3	Returns to Surface	
Surface Casing Cement	10/20/2013		17.3	1,646.8	Returns to Surface	
Intermediate Casing Cement	10/23/2013		17.3	6,340.0	Returns to Surface	
Liner Cement	11/1/2013		5,099.9	12,817.0	Volume Calculations	
Perforations						
Type of Hole	Date	Top (ftKB)	Btm (ftKB)	Zone		
Perforated Liner	12/20/2013	6,441.0	6,445.0	Niobrara, Original Hole		
Perforated Liner	12/20/2013	6,484.0	6,488.0	Niobrara, Original Hole		
Perforated Liner	12/20/2013	6,526.0	6,530.0	Niobrara, Original Hole		
Perforated Liner	12/20/2013	6,614.0	6,618.0	Niobrara, Original Hole		
Perforated Liner	12/20/2013	6,656.0	6,660.0	Niobrara, Original Hole		
Perforated Liner	12/20/2013	6,698.0	6,702.0	Niobrara, Original Hole		
Perforated Liner	12/20/2013	6,782.0	6,786.0	Niobrara, Original Hole		
Perforated Liner	12/20/2013	6,824.0	6,828.0	Niobrara, Original Hole		
Perforated Liner	12/20/2013	6,868.0	6,872.0	Niobrara, Original Hole		
Perforated Liner	12/19/2013	6,954.0	6,958.0	Niobrara, Original Hole		
Perforated Liner	12/19/2013	6,996.0	7,000.0	Niobrara, Original Hole		
Perforated Liner	12/19/2013	7,035.0	7,039.0	Niobrara, Original Hole		



Lease Review All CR

Well Name: RAZOR 21A-2815A

API Number 051233784700		WPC ID 1CO076960		Well Permit Number		Field Name DJ Horizontal Niobrara		County Weld		State CO	
Well Configuration Type Lateral/Horizontal		Orig KB Elv (ft) 4,850.30		Ground Elevation (ft) 4,833.00		Casing Flange Elevation (ft)		Tubing Head Elevation (ft)		Total Depth (ftKB) 12,818.0	
Original Spud Date 10/19/2013		Completion Date 1/16/2014		Asset Group Retail Asset Group		Responsible Engineer Gary Nordlander		N/S Dist (ft) 330.0	N/S Ref FNL	E/W Dist (ft) 627.0	E/W Ref FEL
Lot	Quarter 1 NE	Quarter 2 NE	Quarter 3	Quarter 4	Section 21	Section Suffix	Section Type	Township 10 N	Township N/S Dir	Range 58 W	Meridian 6TH

Lateral/Horizontal - Original Hole, 4/8/2014 3:11:39 PM				Perforations					
MD (ftKB)	TV D (ftKB)	n cl (°)	Vertical schematic (actual)	Logs	Type of Hole	Date	Top (ftKB)	Btm (ftKB)	Zone
17.4	17.4	10			Perforated Liner	12/15/2013	7,124.0	7,128.0	Niobrara, Original Hole
97.4	97.4	11		Perforated Liner	12/15/2013	7,165.0	7,169.0	Niobrara, Original Hole	
1,646.7	1,646.3	13		Perforated Liner	12/15/2013	7,204.0	7,208.0	Niobrara, Original Hole	
4,951.1	4,943.9	11		Perforated Liner	12/15/2013	7,292.0	7,296.0	Niobrara, Original Hole	
5,002.6	4,993.3	17		Perforated Liner	12/15/2013	7,332.0	7,336.0	Niobrara, Original Hole	
5,141.7	5,134.2	16		Perforated Liner	12/15/2013	7,375.0	7,379.0	Niobrara, Original Hole	
6,338.6	5,778.5	30		Perforated Liner	12/15/2013	7,463.0	7,467.0	Niobrara, Original Hole	
6,483.9	5,774.4	60		Perforated Liner	12/15/2013	7,502.0	7,506.0	Niobrara, Original Hole	
6,618.1	5,776.3	90		Perforated Liner	12/15/2013	7,543.0	7,547.0	Niobrara, Original Hole	
6,782.2	5,779.9	120		Perforated Liner	12/15/2013	7,626.0	7,630.0	Niobrara, Original Hole	
6,872.0	5,789.9	150		Perforated Liner	12/15/2013	7,657.0	7,661.0	Niobrara, Original Hole	
7,035.1	5,784.7	180		Perforated Liner	12/15/2013	7,679.0	7,683.0	Niobrara, Original Hole	
7,169.0	5,785.0	210		Perforated Liner	12/15/2013	7,754.0	7,758.0	Niobrara, Original Hole	
7,332.0	5,787.8	240		Perforated Liner	12/15/2013	7,794.0	7,798.0	Niobrara, Original Hole	
7,466.9	5,784.1	270		Perforated Liner	12/15/2013	7,832.0	7,836.0	Niobrara, Original Hole	
7,626.0	5,786.7	300		Perforated Liner	12/15/2013	7,924.0	7,928.0	Niobrara, Original Hole	
7,683.1	5,787.4	330		Perforated Liner	12/14/2013	7,967.0	7,971.0	Niobrara, Original Hole	
7,832.0	5,789.7	360		Perforated Liner	12/14/2013	8,010.0	8,014.0	Niobrara, Original Hole	
7,971.1	5,774.6	390		Perforated Liner	12/14/2013	8,096.0	8,100.0	Niobrara, Original Hole	
8,134.8	5,770.4	420		Perforated Liner	12/14/2013	8,135.0	8,139.0	Niobrara, Original Hole	
8,270.0	5,770.9	450		Perforated Liner	12/14/2013	8,176.0	8,180.0	Niobrara, Original Hole	
8,388.1	5,770.3	480		Perforated Liner	12/14/2013	8,266.0	8,270.0	Niobrara, Original Hole	
8,478.0	5,780.0	510		Perforated Liner	12/14/2013	8,295.0	8,299.0	Niobrara, Original Hole	
8,645.0	5,786.7	540		Perforated Liner	12/14/2013	8,316.0	8,320.0	Niobrara, Original Hole	
8,774.0	5,787.5	570		Perforated Liner	12/14/2013	8,388.0	8,392.0	Niobrara, Original Hole	
8,930.1	5,770.0	600		Perforated Liner	12/14/2013	8,430.0	8,434.0	Niobrara, Original Hole	
9,032.2	5,773.7	630		Perforated Liner	12/14/2013	8,474.0	8,478.0	Niobrara, Original Hole	
9,195.9	5,780.9	660		Perforated Liner	12/14/2013	8,562.0	8,566.0	Niobrara, Original Hole	
9,284.1	5,783.6	690		Perforated Liner	12/14/2013	8,604.0	8,608.0	Niobrara, Original Hole	
9,444.9	5,789.9	720		Perforated Liner	12/14/2013	8,645.0	8,649.0	Niobrara, Original Hole	
9,565.0	5,793.5	750	Perforated Liner	12/14/2013	8,727.0	8,731.0	Niobrara, Original Hole		
9,700.1	5,796.1	780	Perforated Liner	12/14/2013	8,770.0	8,774.0	Niobrara, Original Hole		
9,828.1	5,796.1	810	Perforated Liner	12/14/2013	8,814.0	8,818.0	Niobrara, Original Hole		
9,994.1	5,801.9	840	Perforated Liner	12/14/2013	8,900.0	8,904.0	Niobrara, Original Hole		
10,081.0	5,806.2	870	Perforated Liner	12/14/2013	8,930.0	8,934.0	Niobrara, Original Hole		
10,215.9	5,808.9	900	Perforated Liner	12/14/2013	8,953.0	8,957.0	Niobrara, Original Hole		
10,333.0	5,807.2	930	Perforated Liner	12/14/2013	9,028.0	9,032.0	Niobrara, Original Hole		
10,499.0	5,804.1	960	Perforated Liner	12/14/2013	9,070.0	9,074.0	Niobrara, Original Hole		
10,627.0	5,803.6	990	Perforated Liner	12/14/2013	9,113.0	9,117.0	Niobrara, Original Hole		
10,785.1	5,802.2	1020	Perforated Liner	12/13/2013					
10,846.1	5,801.3	1050	Perforated Liner	12/13/2013					
10,996.1	5,798.6	1080	Perforated Liner	12/13/2013					
11,122.0	5,789.7	1110	Perforated Liner	12/13/2013					
11,287.1	5,778.8	1140	Perforated Liner	12/13/2013					
11,417.0	5,770.0	1170	Perforated Liner	12/13/2013					
11,537.1	5,767.0	1200	Perforated Liner	12/13/2013					
11,627.0	5,762.0	1230	Perforated Liner	12/13/2013					
11,795.9	5,760.6	1260	Perforated Liner	12/13/2013					
11,925.9	5,756.7	1290	Perforated Liner	12/13/2013					
12,082.0	5,752.7	1320	Perforated Liner	12/13/2013					
12,181.1	5,750.5	1350	Perforated Liner	12/13/2013					
12,339.9	5,748.8	1380	Perforated Liner	12/13/2013					
12,431.1	5,747.7	1410	Perforated Liner	12/13/2013					
12,592.8	5,741.1	1440	Perforated Liner	12/13/2013					
12,724.1	5,740.3	1470	Perforated Liner	12/13/2013					
12,769.0	5,739.2	1500	Perforated Liner	12/13/2013					
12,817.9	5,737.7	1530	Perforated Liner	12/13/2013					



Lease Review All CR

Well Name: RAZOR 21A-2815A

API Number 051233784700		WPC ID 1CO076960		Well Permit Number		Field Name DJ Horizontal Niobrara		County Weld		State CO	
Well Configuration Type Lateral/Horizontal		Orig KB Elv (ft) 4,850.30		Ground Elevation (ft) 4,833.00		Casing Flange Elevation (ft)		Tubing Head Elevation (ft)		Total Depth (ftKB) 12,818.0	
Original Spud Date 10/19/2013		Completion Date 1/16/2014		Asset Group Retail Asset Group		Responsible Engineer Gary Nordlander		N/S Dist (ft) 330.0	N/S Ref FNL	E/W Dist (ft) 627.0	E/W Ref FEL
Lot	Quarter 1 NE	Quarter 2 NE	Quarter 3	Quarter 4	Section 21	Section Suffix	Section Type	Township 10 N	Township N/S Dir	Range 58 W	Meridian 6TH

Lateral/Horizontal - Original Hole, 4/8/2014 3:11:41 PM				Perforations					
MD (ftKB)	TV D (ftKB)	n cl (°)	Vertical schematic (actual)	Logs	Type of Hole	Date	Top (ftKB)	Btm (ftKB)	Zone
17.4	17.4	10			Perforated Liner	12/13/2013	9,196.0	9,200.0	Niobrara, Original Hole
97.4	97.4	11			Perforated Liner	12/13/2013	9,237.0	9,241.0	Niobrara, Original Hole
1,646.7	1,646.3	13			Perforated Liner	12/13/2013	9,280.0	9,284.0	Niobrara, Original Hole
4,951.1	4,943.9	11			Perforated Liner	12/13/2013	9,363.0	9,367.0	Niobrara, Original Hole
5,002.6	4,993.3	17			Perforated Liner	12/13/2013	9,406.0	9,410.0	Niobrara, Original Hole
5,141.7	5,134.2	16			Perforated Liner	12/13/2013	9,445.0	9,449.0	Niobrara, Original Hole
6,338.6	5,778.5	50			Perforated Liner	12/12/2013	9,527.0	9,531.0	Niobrara, Original Hole
6,483.9	5,774.4	60			Perforated Liner	12/12/2013	9,561.0	9,565.0	Niobrara, Original Hole
6,618.1	5,776.3	60			Perforated Liner	12/12/2013	9,584.0	9,588.0	Niobrara, Original Hole
6,782.2	5,779.9	60			Perforated Liner	12/12/2013	9,658.0	9,662.0	Niobrara, Original Hole
6,872.0	5,789.9	60			Perforated Liner	12/12/2013	9,700.0	9,704.0	Niobrara, Original Hole
7,035.1	5,784.7	64			Perforated Liner	12/12/2013	9,740.0	9,744.0	Niobrara, Original Hole
7,169.0	5,785.0	60			Perforated Liner	12/12/2013	9,824.0	9,828.0	Niobrara, Original Hole
7,332.0	5,787.8	60			Perforated Liner	12/12/2013	9,865.0	9,869.0	Niobrara, Original Hole
7,466.9	5,784.1	60			Perforated Liner	12/12/2013	9,908.0	9,912.0	Niobrara, Original Hole
7,626.0	5,786.7	61			Perforated Liner	12/12/2013	9,994.0	9,998.0	Niobrara, Original Hole
7,683.1	5,787.4	61			Perforated Liner	12/12/2013	10,034.0	10,038.0	Niobrara, Original Hole
7,832.0	5,789.7	60			Perforated Liner	12/12/2013	10,077.0	10,081.0	Niobrara, Original Hole
7,971.1	5,774.6	65			Perforated Liner	12/12/2013	10,162.0	10,166.0	Niobrara, Original Hole
8,134.8	5,770.4	60			Perforated Liner	12/12/2013	10,194.0	10,198.0	Niobrara, Original Hole
8,270.0	5,770.9	60			Perforated Liner	12/12/2013	10,216.0	10,220.0	Niobrara, Original Hole
8,388.1	5,770.3	60			Perforated Liner	12/11/2013	10,288.0	10,292.0	Niobrara, Original Hole
8,478.0	5,780.0	67			Perforated Liner	12/11/2013	10,329.0	10,333.0	Niobrara, Original Hole
8,645.0	5,786.7	60			Perforated Liner	12/11/2013	10,370.0	10,374.0	Niobrara, Original Hole
8,774.0	5,787.5	64			Perforated Liner	12/11/2013	10,457.0	10,461.0	Niobrara, Original Hole
8,930.1	5,770.0	63			Perforated Liner	12/11/2013	10,499.0	10,503.0	Niobrara, Original Hole
9,032.2	5,773.7	67			Perforated Liner	12/11/2013	10,541.0	10,545.0	Niobrara, Original Hole
9,195.9	5,780.9	67			Perforated Liner	12/11/2013	10,623.0	10,627.0	Niobrara, Original Hole
9,284.1	5,783.6	61	Perforated Liner	12/11/2013	10,662.0	10,666.0	Niobrara, Original Hole		
9,444.9	5,789.9	67	Perforated Liner	12/11/2013	10,706.0	10,710.0	Niobrara, Original Hole		
9,565.0	5,793.5	64	Perforated Liner	12/11/2013	10,785.0	10,789.0	Niobrara, Original Hole		
9,700.1	5,795.1	60	Perforated Liner	12/11/2013	10,819.0	10,823.0	Niobrara, Original Hole		
9,828.1	5,795.1	60	Perforated Liner	12/11/2013	10,842.0	10,846.0	Niobrara, Original Hole		
9,994.1	5,801.9	60	Perforated Liner	12/11/2013	10,914.0	10,918.0	Niobrara, Original Hole		
10,081.0	5,806.2	67	Perforated Liner	12/11/2013	10,955.0	10,959.0	Niobrara, Original Hole		
10,215.9	5,808.9	60	Perforated Liner	12/11/2013	10,996.0	11,000.0	Niobrara, Original Hole		
10,333.0	5,807.2	60	Perforated Liner	12/10/2013	11,076.0	11,080.0	Niobrara, Original Hole		
10,499.0	5,804.1	60	Perforated Liner	12/10/2013	11,118.0	11,122.0	Niobrara, Original Hole		
10,627.0	5,803.6	67	Perforated Liner	12/10/2013	11,161.0	11,165.0	Niobrara, Original Hole		
10,785.1	5,802.2	60	Perforated Liner						
10,846.1	5,801.3	60	Perforated Liner						
10,996.1	5,798.6	60	Perforated Liner						
11,122.0	5,789.7	60	Perforated Liner						
11,287.1	5,778.8	60	Perforated Liner						
11,417.0	5,770.0	60	Perforated Liner						
11,537.1	5,767.0	60	Perforated Liner						
11,627.0	5,762.2	60	Perforated Liner						
11,795.9	5,760.6	64	Perforated Liner						
11,925.9	5,755.7	67	Perforated Liner						
12,082.0	5,752.7	69	Perforated Liner						
12,181.1	5,750.5	60	Perforated Liner						
12,339.9	5,748.8	61	Perforated Liner						
12,431.1	5,747.7	61	Perforated Liner						
12,592.8	5,741.1	60	Perforated Liner						
12,724.1	5,740.3	61	Perforated Liner						
12,769.0	5,739.2	61	Perforated Liner						
12,817.9	5,737.7	61	Perforated Liner						



Lease Review All CR

Well Name: RAZOR 21A-2815A

API Number 051233784700		WPC ID 1CO076960		Well Permit Number		Field Name DJ Horizontal Niobrara		County Weld		State CO	
Well Configuration Type Lateral/Horizontal		Orig KB Elv (ft) 4,850.30		Ground Elevation (ft) 4,833.00		Casing Flange Elevation (ft)		Tubing Head Elevation (ft)		Total Depth (ftKB) 12,818.0	
Original Spud Date 10/19/2013		Completion Date 1/16/2014		Asset Group Retail Asset Group		Responsible Engineer Gary Nordlander		N/S Dist (ft) 330.0	N/S Ref FNL	E/W Dist (ft) 627.0	E/W Ref FEL
Lot	Quarter 1 NE	Quarter 2 NE	Quarter 3	Quarter 4	Section 21	Section Suffix	Section Type	Township 10 N	Township N/S Dir	Range 58 W	Meridian 6TH

Lateral/Horizontal - Original Hole, 4/8/2014 3:11:42 PM				Perforations					
MD (ftKB)	TV D (ftKB)	n cl (°)	Vertical schematic (actual)	Logs	Type of Hole	Date	Top (ftKB)	Btm (ftKB)	Zone
17.4	17.4	10			Perforated Liner	12/10/2013	11,246.0	11,250.0	Niobrara, Original Hole
97.4	97.4	10		Perforated Liner	12/10/2013	11,287.0	11,291.0	Niobrara, Original Hole	
1,646.7	1,646.3	10		Perforated Liner	12/10/2013	11,330.0	11,334.0	Niobrara, Original Hole	
4,951.1	4,943.0	10		Perforated Liner	12/10/2013	11,413.0	11,417.0	Niobrara, Original Hole	
5,002.6	4,993.3	10		Perforated Liner	12/10/2013	11,446.0	11,450.0	Niobrara, Original Hole	
5,141.7	5,134.2	10		Perforated Liner	12/10/2013	11,464.0	11,468.0	Niobrara, Original Hole	
6,338.6	5,778.5	10		Perforated Liner	12/10/2013	11,537.0	11,541.0	Niobrara, Original Hole	
6,483.9	5,774.4	10		Perforated Liner	12/10/2013	11,580.0	11,584.0	Niobrara, Original Hole	
6,618.1	5,776.3	10		Perforated Liner	12/10/2013	11,623.0	11,627.0	Niobrara, Original Hole	
6,782.2	5,779.0	10		Perforated Liner	12/10/2013	11,708.0	11,712.0	Niobrara, Original Hole	
6,872.0	5,789.0	10		Perforated Liner	12/10/2013	11,751.0	11,755.0	Niobrara, Original Hole	
7,035.1	5,784.7	10		Perforated Liner	12/9/2013	11,796.0	11,800.0	Niobrara, Original Hole	
7,169.0	5,785.0	10		Perforated Liner	12/9/2013	11,880.0	11,884.0	Niobrara, Original Hole	
7,332.0	5,787.8	10		Perforated Liner	12/9/2013	11,922.0	11,926.0	Niobrara, Original Hole	
7,466.9	5,784.1	10		Perforated Liner	12/9/2013	11,965.0	11,969.0	Niobrara, Original Hole	
7,626.0	5,786.7	10		Perforated Liner	12/9/2013	12,050.0	12,054.0	Niobrara, Original Hole	
7,683.1	5,787.4	10		Perforated Liner	12/9/2013	12,082.0	12,086.0	Niobrara, Original Hole	
7,832.0	5,789.7	10		Perforated Liner	12/9/2013	12,105.0	12,109.0	Niobrara, Original Hole	
7,971.1	5,774.6	10		Perforated Liner	12/9/2013	12,177.0	12,181.0	Niobrara, Original Hole	
8,134.8	5,770.4	10		Perforated Liner	12/9/2013	12,216.0	12,220.0	Niobrara, Original Hole	
8,270.0	5,770.0	10		Perforated Liner	12/9/2013	12,259.0	12,263.0	Niobrara, Original Hole	
8,388.1	5,770.3	10		Perforated Liner	12/9/2013	12,340.0	12,344.0	Niobrara, Original Hole	
8,478.0	5,780.0	10		Perforated Liner	12/9/2013	12,385.0	12,389.0	Niobrara, Original Hole	
8,645.0	5,786.7	10		Perforated Liner	12/9/2013	12,427.0	12,431.0	Niobrara, Original Hole	
8,774.0	5,787.5	10		Perforated Liner	12/8/2013	12,513.0	12,517.0	Niobrara, Original Hole	
8,930.1	5,770.0	10	Perforated Liner	12/8/2013	12,550.0	12,554.0	Niobrara, Original Hole		
9,032.2	5,773.7	10	Perforated Liner	12/8/2013	12,593.0	12,597.0	Niobrara, Original Hole		
9,195.9	5,780.0	10	Perforated Liner	12/7/2013	12,680.0	12,684.0	Niobrara, Original Hole		
9,284.1	5,783.0	10	Perforated Liner	12/7/2013	12,720.0	12,724.0	Niobrara, Original Hole		
9,444.9	5,789.0	10	Perforated Liner	12/7/2013	12,751.0	12,755.0	Niobrara, Original Hole		
9,565.0	5,783.5	10	Perforated Liner						
9,700.1	5,795.1	10	Perforated Liner						
9,828.1	5,795.1	10	Perforated Liner						
9,994.1	5,801.0	10	Perforated Liner						
10,081.0	5,806.2	10	Perforated Liner						
10,215.9	5,808.5	10	Perforated Liner						
10,333.0	5,807.2	10	Perforated Liner						
10,499.0	5,804.1	10	Perforated Liner						
10,627.0	5,803.6	10	Perforated Liner						
10,785.1	5,802.2	10	Perforated Liner						
10,846.1	5,801.3	10	Perforated Liner						
10,996.1	5,798.6	10	Perforated Liner						
11,122.0	5,789.7	10	Perforated Liner						
11,287.1	5,778.0	10	Perforated Liner						
11,417.0	5,770.0	10	Perforated Liner						
11,537.1	5,767.0	10	Perforated Liner						
11,627.0	5,762.2	10	Perforated Liner						
11,795.9	5,760.6	10	Perforated Liner						
11,925.9	5,755.7	10	Perforated Liner						
12,082.0	5,752.7	10	Perforated Liner						
12,181.1	5,750.5	10	Perforated Liner						
12,339.9	5,748.0	10	Perforated Liner						
12,431.1	5,747.7	10	Perforated Liner						
12,592.8	5,741.1	10	Perforated Liner						
12,724.1	5,740.3	10	Perforated Liner						
12,769.0	5,739.2	10	Perforated Liner						
12,817.9	5,737.7	10	Perforated Liner						

Stim/Treat Stages					
Stage Type	Start Date	Top (ftKB)	Btm (ftKB)	Stim/Treat Fluid	Vol Clean Pump (bbl)
Frac	12/20/2013	6,441.0	6,530.0	9500# 40/70, 166500# 20/70, 24 bls 15% HCl, Slick Water	3748.00
Frac	12/20/2013	6,614.0	6,702.0	12000# 40/70, 163100# 20/70, 24 bls 15% HCl, Slick Water	3838.00
Frac	12/20/2013	6,782.0	6,872.0	9893# 40/70, 165507# 20/70, 24 bls 15% HCl, Slick Water	3839.00
Frac	12/19/2013	6,954.0	7,039.0	9060# 40/70, 165950# 20/70, 24 bls 15% HCl, Slick Water	3850.00
Frac	12/19/2013	7,124.0	7,208.0	9084# 40/70, 165216# 20/70, 24 bls 15% HCl, Slick Water	3845.00



Lease Review All CR

Well Name: RAZOR 21A-2815A

API Number 051233784700		WPC ID 1CO076960		Well Permit Number		Field Name DJ Horizontal Niobrara		County Weld		State CO	
Well Configuration Type Lateral/Horizontal		Orig KB Elv (ft) 4,850.30		Ground Elevation (ft) 4,833.00		Casing Flange Elevation (ft)		Tubing Head Elevation (ft)		Total Depth (ftKB) 12,818.0	
Original Spud Date 10/19/2013		Completion Date 1/16/2014		Asset Group Retail Asset Group		Responsible Engineer Gary Nordlander		N/S Dist (ft) 330.0	N/S Ref FNL	E/W Dist (ft) 627.0	E/W Ref FEL
Lot	Quarter 1 NE	Quarter 2 NE	Quarter 3	Quarter 4	Section 21	Section Suffix	Section Type	Township 10 N	Township N/S Dir	Range 58 W	Meridian 6TH

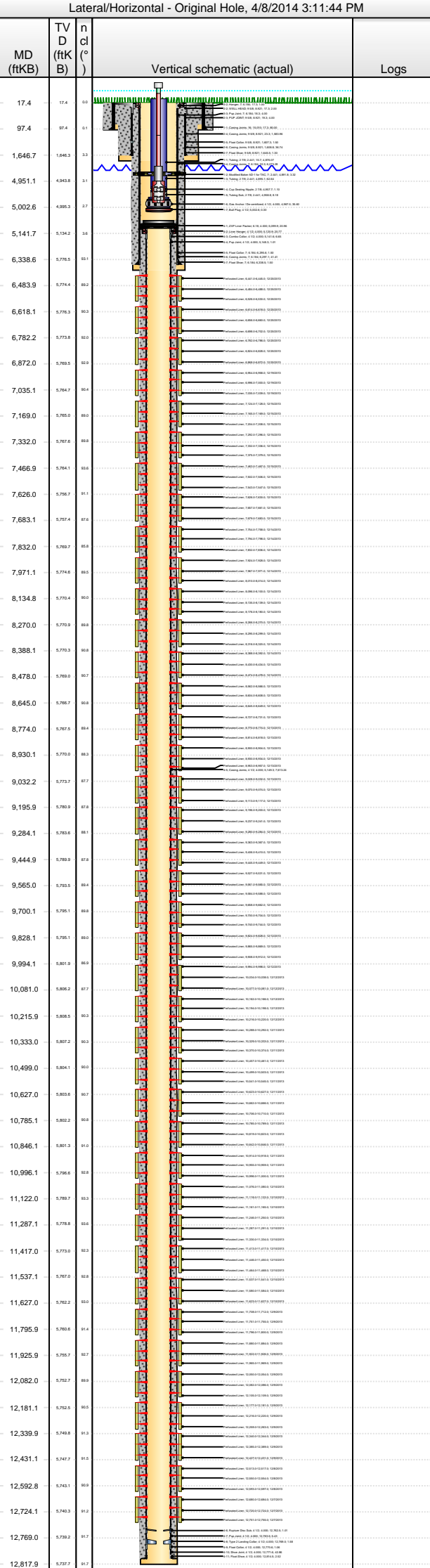
Lateral/Horizontal - Original Hole, 4/8/2014 3:11:43 PM				Stim/Treat Stages						
MD (ftKB)	TV D (ftKB)	n cl (°)	Vertical schematic (actual)	Logs	Stage Type	Start Date	Top (ftKB)	Btm (ftKB)	Stim/Treat Fluid	Vol Clean Pump (bbl)
17.4	17.4	10			Frac	12/15/2013	7,292.0	7,379.0	9043# 40/70, 167357# 20/70, 24 bls 15% HCl, Slick Water	3854.00
97.4	97.4	11		Frac	12/15/2013	7,463.0	7,547.0	9045# 40/70, 165600# 20/70, 24 bls 15% HCl, Slick Water	3846.00	
1,646.7	1,646.3	13		Frac	12/14/2013	7,626.0	7,683.0	9063# 40/70, 166937# 20/70, 24 bls 15% HCl, Slick Water	3880.00	
4,951.1	4,943.9	11		Frac	12/14/2013	7,754.0	7,836.0	9015# 40/70, 168085# 20/70, 24 bls 15% HCl, Slick Water	3866.00	
5,002.6	4,993.3	17		Frac	12/14/2013	7,924.0	8,014.0	8919# 40/70, 166581# 20/70, 24 bls 15% HCl, Slick Water	3893.00	
5,141.7	5,134.2	16		Frac	12/14/2013	8,096.0	8,180.0	8762# 40/70, 165538# 20/70, 24 bls 15% HCl, Slick Water	3850.00	
6,338.6	5,778.3	10		Frac	12/14/2013	8,266.0	8,320.0	8777# 40/70, 169800# 20/70, 24 bls 15% HCl, Slick Water	3872.00	
6,483.9	5,774.4	10		Frac	12/13/2013	8,388.0	8,478.0	8624# 40/70, 171176# 20/70, 24 bls 15% HCl, Slick Water	3900.00	
6,618.1	5,776.3	10		Frac	12/13/2013	8,562.0	8,649.0	9248# 40/70, 168252# 20/70, 24 bls 15% HCl, Slick Water	3890.00	
6,782.2	5,779.9	10		Frac	12/13/2013	8,727.0	8,818.0	9201# 40/70, 172099# 20/70, 24 bls 15% HCl, Slick Water	4273.00	
6,872.0	5,789.9	10		Frac	12/13/2013	8,900.0	8,957.0	88160# 40/70, 165800# 20/70, 24 bls 15% HCl, Slick Water	3873.00	
7,035.1	5,784.7	10		Frac	12/13/2013	9,028.0	9,117.0	10080# 40/70, 172000# 20/70, 24 bls 15% HCl, Slick Water	3904.00	
7,169.0	5,785.0	10		Frac	12/13/2013	9,196.0	9,284.0	8952# 40/70, 170048# 20/70, 24 bls 15% HCl, Slick Water	3910.00	
7,332.0	5,787.8	10		Frac	12/13/2013	9,363.0	9,449.0	8888# 40/70, 168012# 20/70, 24 bls 15% HCl, Slick Water	3893.00	
7,466.9	5,784.1	10		Frac	12/12/2013	9,527.0	9,588.0	9105# 40/70, 166595# 20/70, 24 bls 15% HCl, Slick Water	3882.00	
7,626.0	5,786.7	10		Frac	12/12/2013	9,658.0	9,744.0	8815# 40/70, 166885# 20/70, 24 bls 15% HCl, Slick Water	3887.00	
7,683.1	5,787.4	10		Frac	12/12/2013	9,824.0	9,912.0	8967# 40/70, 168533# 20/70, 24 bls 15% HCl, Slick Water	3917.00	
7,832.0	5,789.7	10		Frac	12/12/2013	9,994.0	10,081.0	8987# 40/70, 167513# 20/70, 24 bls 15% HCl, Slick Water	3888.00	
7,971.1	5,774.6	10		Frac	12/11/2013	10,162.0	10,220.0	8922# 40/70, 168078# 20/70, 24 bls 15% HCl, Slick Water	3904.00	
8,134.8	5,770.4	10		Frac	12/11/2013	10,288.0	10,374.0	8890# 40/70, 166310# 20/70, 24 bls 15% HCl, Slick Water	3905.00	
8,270.0	5,770.9	10		Frac	12/11/2013	10,457.0	10,545.0	8953# 40/70, 169247# 20/70, 24 bls 15% HCl, Slick Water	3912.00	
8,388.1	5,770.3	10		Frac	12/11/2013	10,623.0	10,710.0	8903# 40/70, 167697# 20/70, 24 bls 15% HCl, Slick Water	3944.00	
8,478.0	5,780.0	10		Frac	12/11/2013	10,785.0	10,846.0	8742# 40/70, 164858# 20/70, 24 bls 15% HCl, Slick Water	3926.00	
8,645.0	5,786.7	10		Frac	12/10/2013	10,914.0	11,000.0	8510# 40/70, 160190# 20/70, 24 bls 15% HCl, Slick Water	3920.00	
8,774.0	5,787.5	10		Frac	12/10/2013	11,076.0	11,165.0	8985# 40/70, 164215# 20/70, 24 bls 15% HCl, Slick Water	4525.00	
8,930.1	5,770.0	10		Frac	12/10/2013	11,246.0	11,334.0	9022# 40/70, 170,228# 20/70, 24 bls 15% HCl, Slick Water	3991.00	
9,032.2	5,773.7	10								
9,195.9	5,780.9	10								
9,284.1	5,783.6	10								
9,444.9	5,789.9	10								
9,565.0	5,793.5	10								
9,700.1	5,796.1	10								
9,828.1	5,796.1	10								
9,994.1	5,801.9	10								
10,081.0	5,806.2	10								
10,215.9	5,808.9	10								
10,333.0	5,807.2	10								
10,499.0	5,804.1	10								
10,627.0	5,803.6	10								
10,785.1	5,802.2	10								
10,846.1	5,801.3	10								
10,996.1	5,798.6	10								
11,122.0	5,789.7	10								
11,287.1	5,778.8	10								
11,417.0	5,770.0	10								
11,537.1	5,767.0	10								
11,627.0	5,762.2	10								
11,795.9	5,760.6	10								
11,925.9	5,756.7	10								
12,082.0	5,752.7	10								
12,181.1	5,750.5	10								
12,339.9	5,748.8	10								
12,431.1	5,747.7	10								
12,592.8	5,743.1	10								
12,724.1	5,740.3	10								
12,769.0	5,739.2	10								
12,817.9	5,737.7	10								



Lease Review All CR

Well Name: RAZOR 21A-2815A

API Number 051233784700		WPC ID 1CO076960		Well Permit Number		Field Name DJ Horizontal Niobrara		County Weld		State CO	
Well Configuration Type Lateral/Horizontal		Orig KB Elv (ft) 4,850.30		Ground Elevation (ft) 4,833.00		Casing Flange Elevation (ft)		Tubing Head Elevation (ft)		Total Depth (ftKB) 12,818.0	
Original Spud Date 10/19/2013		Completion Date 1/16/2014		Asset Group Retail Asset Group		Responsible Engineer Gary Nordlander		N/S Dist (ft) 330.0		N/S Ref FNL	
								E/W Dist (ft) 627.0		E/W Ref FEL	
Lot		Quarter 1 NE		Quarter 2 NE		Quarter 3		Quarter 4		Section 21	
										Section Suffix	
										Section Type	
										Township 10 N	
										Township N/S Dir Range	
										Range 58 W	
										Range E/W Dir Meridian 6TH	



Lateral/Horizontal - Original Hole, 4/8/2014 3:11:44 PM		Stim/Treat Stages							
MD (ftKB)	TV D (ftKB)	n cl (°)	Logs	Stage Type	Start Date	Top (ftKB)	Btm (ftKB)	Stim/Treat Fluid	Vol Clean Pump (bbl)
17.4	17.4	10		Frac	12/10/2013	11,413.0	11,468.0	8919# 40/70, 166664# 20/70, 24 bls 15% HCl, Slick Water	4008.00
97.4	97.4	11		Frac	12/9/2013	11,537.0	11,627.0	8856# 40/70, 166144# 20/70, 24 bls 15% HCl, Slick Water	3942.00
1,646.7	1,646.3	13		Frac	12/9/2013	11,708.0	11,800.0	8962# 40/70, 164938# 20/70, 24 bls 15% HCl, Slick Water	3934.00
4,951.1	4,943.0	11		Frac	12/9/2013	11,880.0	11,969.0	9096# 40/70, 163904# 20/70, 24 bls 15% HCl, Slick Water	3918.00
5,002.6	4,993.3	17		Frac	12/9/2013	12,050.0	12,109.0	8712# 40/70, 169898# 20/70, 24 bls 15% HCl, Slick Water	3970.00
5,141.7	5,134.2	16		Frac	12/9/2013	12,177.0	12,263.0	8657# 40/70, 163813# 20/70, 24 bls 15% HCl, Slick Water	3966.00
6,338.6	5,778.5	10		Frac	12/8/2013	12,340.0	12,431.0	9011# 40/70, 165489# 20/70, 24 bls 15% HCl, Slick Water	3951.00
6,483.9	5,774.4	10		Frac	12/8/2013	12,513.0	12,597.0	8755# 40/70, 165,645# 20/70, 24 bls 15% HCl, Slick Water	4116.00
6,618.1	5,776.3	10		Frac	12/7/2013	12,680.0	12,755.0	9025# 40/70, 165625# 20/70, 24 bls 15% HCl, Slick Water	4033.00
6,782.2	5,779.0	10							
6,872.0	5,780.0	10							
7,035.1	5,784.7	10							
7,169.0	5,785.0	10							
7,332.0	5,787.8	10							
7,466.9	5,784.1	10							
7,626.0	5,786.7	11							
7,683.1	5,787.4	11							
7,832.0	5,789.7	11							
7,971.1	5,774.6	11							
8,134.8	5,770.4	11							
8,270.0	5,770.0	11							
8,388.1	5,770.3	11							
8,478.0	5,780.0	11							
8,645.0	5,786.7	11							
8,774.0	5,787.5	11							
8,930.1	5,770.0	11							
9,032.2	5,773.7	11							
9,195.9	5,780.0	11							
9,284.1	5,783.0	11							
9,444.9	5,789.0	11							
9,565.0	5,793.0	11							
9,700.1	5,796.1	11							
9,828.1	5,796.1	11							
9,994.1	5,801.0	11							
10,081.0	5,806.2	11							
10,215.9	5,808.5	11							
10,333.0	5,807.2	11							
10,499.0	5,804.1	11							
10,627.0	5,803.6	11							
10,785.1	5,802.2	11							
10,846.1	5,801.3	11							
10,996.1	5,798.6	11							
11,122.0	5,799.7	11							
11,287.1	5,778.0	11							
11,417.0	5,770.0	11							
11,537.1	5,767.0	11							
11,627.0	5,762.0	11							
11,795.9	5,760.6	11							
11,925.9	5,757.7	11							
12,082.0	5,752.7	11							
12,181.1	5,750.5	11							
12,339.9	5,748.0	11							
12,431.1	5,747.7	11							
12,592.8	5,741.1	11							
12,724.1	5,740.3	11							
12,769.0	5,739.2	11							
12,817.9	5,737.7	11							

Tubing - Production set at 5,002.9ftKB on 2/27/2014 12:32					
Set Depth (ftKB)	Comment	Run Date	Pull Date		
5,002.9		2/27/2014			
Item Des	OD (in)	ID (in)	Len (ft)	Top (ftKB)	Btm (ftKB)
Tubing	2 7/8	2.441	4,876.07	15.7	4,891.8
Modified Baker AD-1 for TAC	7	2.441	3.32	4,891.8	4,895.1
Tubing	2 7/8	2.441	62.64	4,895.1	4,957.7
Cup Seating Nipple	2 7/8		1.10	4,957.7	4,958.8
Tubing Sub	2 7/8	2.441	8.18	4,958.8	4,967.0
Gas Anchor / De-centralized	4 1/2	4.000	35.60	4,967.0	5,002.6
Bull Plug	4 1/2		0.30	5,002.6	5,002.9

Rod Strings					
Special on 3/25/2014 08:00					
Rod Description	Run Date	Pull Date			
Special	3/25/2014				
Item Des	OD (in)	Len (ft)	Top (ftKB)	Btm (ftKB)	
Polished Rod	1 1/2	26.00	-27.0	-1.0	
Pony Rod	3/4	2.00	-1.0	1.0	
Sucker Rod / Plain	3/4	900.00	1.0	901.0	
Sucker Rod / Guided 4 Per	3/4	3,750.00	901.0	4,651.0	
Sinker Bar	1 1/2	300.00	4,651.0	4,951.0	
Rod Insert Pump 2" THD 2 stg	2	24.00	4,951.0	4,975.0	
De-sander	2		4,975.0	4,975.0	

Other Strings					
Set Depth (ftKB)	Comment	Run Date	Pull Date		
Item Des	OD (in)	Len (ft)	Top (ftKB)	Btm (ftKB)	

Other In Hole					
Des	OD (in)	Run Date	Pull Date	Top (ftKB)	Btm (ftKB)
CFP	4	12/20/2013	1/16/2014	6,577.0	6,579.0
CFP	4	12/20/2013	1/16/2013	6,747.0	6,749.0
CFP	4	12/20/2013	1/16/2013	6,916.0	6,918.0
CFP	4	12/19/2013	1/16/2013	7,085.0	7,087.0
CFP	4	12/15/2013	1/16/2013	7,256.0	7,258.0
CFP	4	12/15/2013	1/16/2013	7,423.0	7,425.0
CFP	4	12/15/2013	1/16/2013	7,591.0	7,593.0
CFP	4	12/15/2013	1/16/2013	7,716.0	7,718.0
CFP	4	12/14/2013	1/16/2013	7,886.0	7,888.0
CFP	4	12/14/2013	1/16/2013	8,058.0	8,060.0
CFP	4	12/14/2013	1/16/2013	8,226.0	8,228.0
CFP	4	12/14/2013	1/16/2013	8,353.0	8,355.0
CFP	4	12/14/2013	1/16/2013	8,523.0	8,525.0
CFP	4	12/13/2013	1/16/2013	8,691.0	8,693.0
CFP	4	12/13/2013	1/16/2013	8,862.0	8,864.0
CFP	4	12/13/2013	1/16/2013	8,990.0	8,992.0
CFP	4	12/13/2013	1/17/2013	9,160.0	9,162.0
CFP	4	12/13/2013	1/17/2014	9,328.0	9,330.0
CFP	4	12/13/2013	1/17/2014	9,493.0	9,495.0

