
WPX ENERGY ROCKY MOUNTAIN LLC-EBUS

**RU 311-5
RULISON
Garfield County , Colorado**

Cement Surface Casing
15-Dec-2013

Post Job Report

The Road to Excellence Starts with Safety

Sold To #: 300721	Ship To #: 3123451	Quote #:	Sales Order #: 900974627
Customer: WPX ENERGY ROCKY MOUNTAIN LLC-EBUS	Customer Rep:		
Well Name: RU	Well #: 311-5	API/UWI #:	
Field: RULISON	City (SAP): RIFLE	County/Parish: Garfield	State: Colorado
Contractor: Nabors	Rig/Platform Name/Num: Nabors 576		
Job Purpose: Cement Surface Casing			
Well Type: Development Well	Job Type: Cement Surface Casing		
Sales Person: MAYO, MARK	Srv Supervisor: ARNOLD, EDWARD	MBU ID Emp #: 439784	

Job Personnel

HES Emp Name	Exp Hrs	Emp #	HES Emp Name	Exp Hrs	Emp #	HES Emp Name	Exp Hrs	Emp #
ARNOLD, EDWARD John	5.5	439784	BROWN, JUSTIN Michael	5.5	549296	BROWN, TRAVIS A	5.5	396848
WOLFE, JON P	5.5	485217						

Equipment

HES Unit #	Distance-1 way	HES Unit #	Distance-1 way	HES Unit #	Distance-1 way	HES Unit #	Distance-1 way
	60 mile	10744549	60 mile	10995027	60 mile	11259882	60 mile
11808829	60 mile						

Job Hours

Date	On Location Hours	Operating Hours	Date	On Location Hours	Operating Hours	Date	On Location Hours	Operating Hours
2013-12-15	5.5	3						

TOTAL Total is the sum of each column separately

Job

Formation Name	Top	Bottom	Called Out	Date	Time	Time Zone
Formation Depth (MD)			On Location	15 - Dec - 2013	12:00	MST
Form Type		BHST	Job Started	15 - Dec - 2013	18:00	MST
Job depth MD	1165. ft	Job Depth TVD	Job Completed	15 - Dec - 2013	21:25	MST
Water Depth		Wk Ht Above Floor		15 - Dec - 2013	22:21	MST
Perforation Depth (MD)	From	To	Departed Loc	15 - Dec - 2013	23:30	MST

Well Data

Description	New / Used	Max pressure psig	Size in	ID in	Weight lbm/ft	Thread	Grade	Top MD ft	Bottom MD ft	Top TVD ft	Bottom TVD ft
OPEN HOLE				13.5				.	1100.		
SURFACE CASING	Unknown		9.625	9.001	32.3			.	1100.		

Tools and Accessories

Type	Size	Qty	Make	Depth	Type	Size	Qty	Make	Depth	Type	Size	Qty	Make
Guide Shoe					Packer					Top Plug	9 5/8"	1	HES
Float Shoe					Bridge Plug					Bottom Plug			
Float Collar					Retainer					SSR plug set			
Insert Float										Plug Container	9 5/8"	1	HES
Stage Tool										Centralizers			

Miscellaneous Materials

Gelling Agt		Conc		Surfactant		Conc		Acid Type		Qty		Conc	%
Treatment Fld		Conc		Inhibitor		Conc		Sand Type		Size		Qty	

Fluid Data

Fluid Data									
Stage/Plug #: 1									
Fluid #	Stage Type	Fluid Name	Qty	Qty uom	Mixing Density lbm/gal	Yield ft3/sk	Mix Fluid Gal/sk	Rate bbl/min	Total Mix Fluid Gal/sk

Stage/Plug #: 1

Stage/Plug #: 1									
Fluid #	Stage Type	Fluid Name	Qty	Qty uom	Mixing Density lbm/gal	Yield ft ³ /sk	Mix Fluid Gal/sk	Rate bbl/min	Total Mix Fluid Gal/sk
1	Fresh Water Spacer		20.00	bbl	.	.0	.0	4	
2	VariCem GJ1 Lead Cement	VARICEM (TM) CEMENT (452009)	160.0	sacks	12.3	2.38	13.75	8	13.75
13.75 Gal		FRESH WATER							
3	VariCem GJ1 Tail Cement	VARICEM (TM) CEMENT (452009)	160.0	sacks	12.8	2.11	11.75	8	11.75
11.75 Gal		FRESH WATER							
4	Fresh Water Displacement		87.00	bbl	.	.0	.0	10	
Calculated Values		Pressures		Volumes					
Displacement	87.4	Shut In: Instant		Lost Returns		Cement Slurry	127.9	Pad	
Top Of Cement	SURFACE	5 Min		Cement Returns	30	Actual Displacement	87.4	Treatment	
Frac Gradient		15 Min		Spacers	20	Load and Breakdown		Total Job	235.3
Rates									
Circulating	RIG	Mixing	8	Displacement	10	Avg. Job	8		
Cement Left In Pipe	Amount	43.9 ft	Reason	Shoe Joint					
Frac Ring # 1 @	ID	Frac ring # 2 @	ID	Frac Ring # 3 @	ID	Frac Ring # 4 @	ID		
The Information Stated Herein Is Correct				Customer Representative Signature					

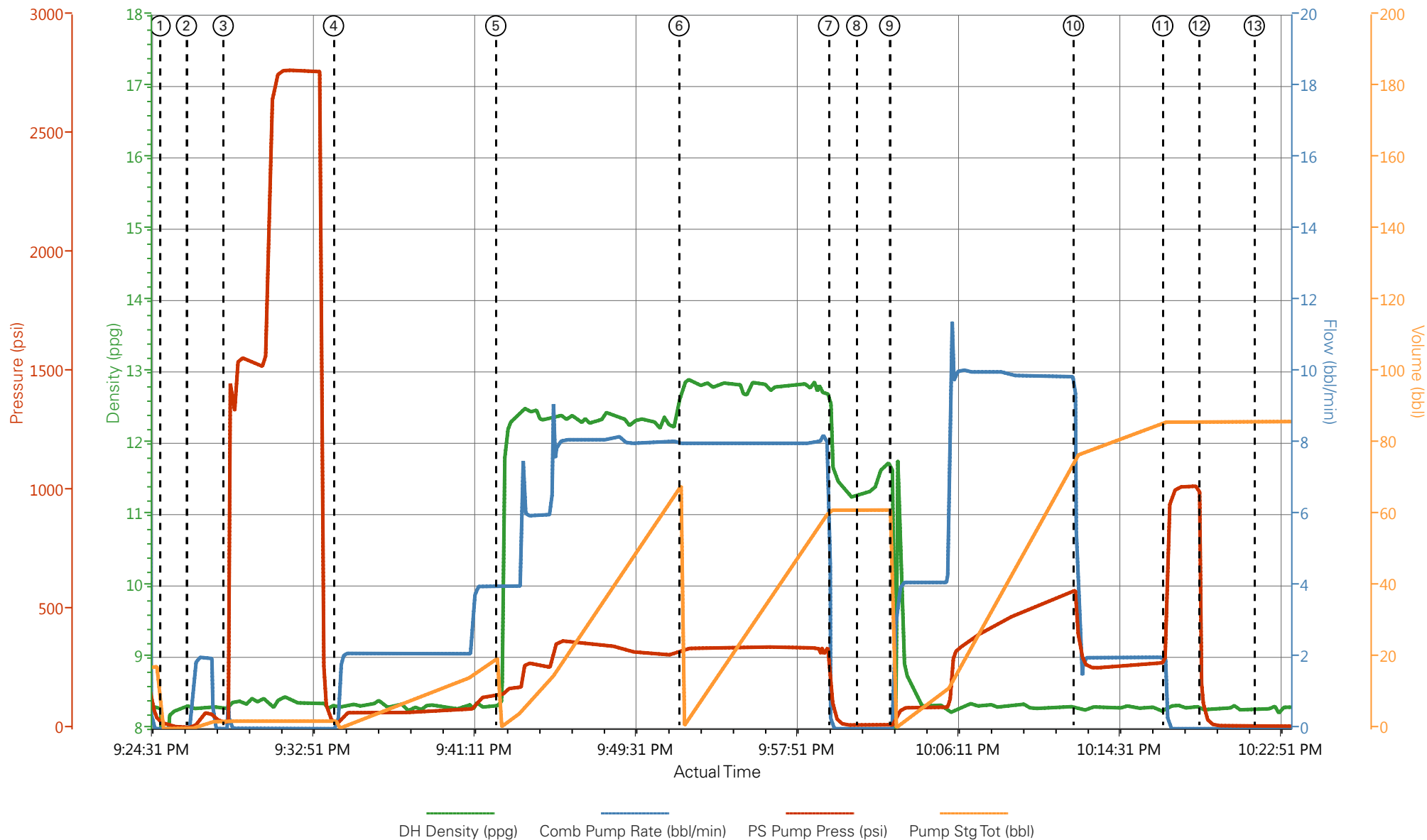
The Road to Excellence Starts with Safety

Sold To #: 300721		Ship To #: 3123451		Quote #:		Sales Order #: 900974627	
Customer: WPX ENERGY ROCKY MOUNTAIN LLC-EBUS				Customer Rep:			
Well Name: RU			Well #: 311-5			API/UWI #:	
Field: RULISON		City (SAP): RIFLE		County/Parish: Garfield			State: Colorado
Legal Description:							
Lat:				Long:			
Contractor: Nabors			Rig/Platform Name/Num: Nabors 576				
Job Purpose: Cement Surface Casing						Ticket Amount:	
Well Type: Development Well			Job Type: Cement Surface Casing				
Sales Person: MAYO, MARK			Srv Supervisor: ARNOLD, EDWARD			MBU ID Emp #: 439784	

Activity Description	Date/Time	Cht #	Rate bbl/min	Volume bbl		Pressure psig		Comments
				Stage	Total	Tubing	Casing	
Call Out	12/15/2013 12:00							Crew on another location.
Pre-Convoy Safety Meeting	12/15/2013 15:15							Including entire cement crew.
Crew Leave Yard	12/15/2013 15:30							
Arrive At Loc	12/15/2013 18:00							Rig still Running casing.
Assessment Of Location Safety Meeting	12/15/2013 20:00							Water; PH 7; KCL 200; So4 <200; Fe 0; Calcium 120; Chlorides 0; Temp 45.
Pre-Rig Up Safety Meeting	12/15/2013 20:10							Including entire cement crew.
Rig-Up Equipment	12/15/2013 20:15							1 Elite # ; 1 660 bulk truck; 1 hard line to floor; 1 line to upright; 1 line to rig tank. 9.625" compact head.
Rig-Up Completed	12/15/2013 20:45							
Pre-Job Safety Meeting	12/15/2013 21:00							Including everyone on location.
Start Job	12/15/2013 21:25							TD 1165; TP 1154.6; SJ 43.9; OH 13 1/2"; Casing 9.625" 32.3# H-40; Mud 10 ppg.
Pump Water	12/15/2013 21:26		2	2			70.0	Fill lines with fresh water.
Test Lines	12/15/2013 21:28					2768.0		Good pressure test, no leaks.
Pump Spacer 1	12/15/2013 21:34		4	20			139.0	20 BBL fresh water spacer.
Pump Lead Cement	12/15/2013 21:42		8	67.8			328.0	160 sks Lead Cement, 12.3 ppg, 2.38 cf3, 13.75 gal/sk.

Activity Description	Date/Time	Cht #	Rate bbl/min	Volume bbl		Pressure psig		Comments
				Stage	Total	Tubing	Casing	
Pump Tail Cement	12/15/2013 21:51		8	60.1			340.0	160 sks Tail Cement, 12.8 ppg, 2.11 cf3, 11.75 gal/sk.
Shutdown	12/15/2013 21:59							
Drop Plug	12/15/2013 22:01							Plug left container.
Pump Displacement	12/15/2013 22:02		10	77.4			580.0	Fresh water displacement.
Slow Rate	12/15/2013 22:12		2	10			273.0	Slow rate 10 BBL's prior to bumping the plug.
Bump Plug	12/15/2013 22:16				87.4		975.0	Bumped plug, took 500 PSI over.
Check Floats	12/15/2013 22:18							Floats held, 3/4 BBL back. 30 BBL.'s of good cement t surface. Good circulation throughout job.
End Job	12/15/2013 22:21							
Pre-Rig Down Safety Meeting	12/15/2013 22:25							Including entire cement crew.
Rig-Down Equipment	12/15/2013 22:30							
Rig-Down Completed	12/15/2013 22:50							
Pre-Convoy Safety Meeting	12/15/2013 23:15							Including entire cement crew.
Crew Leave Location	12/15/2013 23:30							Crew leave location for Service Center or another location.
Other	12/15/2013 23:30							Thank You for using Halliburton. Ed Arnold and Crew.

WPX - RU 311-5 - 9 5/8" SURFACE CASING



- | | | | | |
|--------------------------|-----------------------------------|----------------------------------|--------------------------------|--------------------------|
| ① Start Job 2.9;0;20;0 | ④ Pump Spacer 1 8.32;0;21;0 | ⑦ Shutdown 11.65;0;123;61.3 | ⑩ Slow Rate 8.3;4.7;432;76.5 | ⑬ End Job 8.26;0;12;86.1 |
| ② Prime Pumps 8.33;0;5;0 | ⑤ Pump Lead Cement 8.31;4;141;0.1 | ⑧ Drop Plug 11.28;0;15;61.3 | ⑪ Bump Plug 8.29;1.9;494;86 | |
| ③ Test Lines 8.32;0;25;2 | ⑥ Pump Tail Cement 12.7;8;332;0.1 | ⑨ Pump Displacement 11.63;0;15;0 | ⑫ Check Floats 8.28;0;120;86.1 | |

▼ **HALLIBURTON** | iCem® Service

Created: 2013-12-15 19:29:35, Version: 3.0.121

Edit

Customer: WPX ENERGY ROCKY MOUNTAIN LLC-EBUS

Job Date: 12/15/2013 8:43:13 PM

Well: RU 311-5

Representative: RICK OAKS

Sales Order #: 900974627

ELITE #9: ED ARNOLD / TRAVIS BROWN



Water Analysis Report

Company:	WPX	Date:	12/15/2013
Submitted by:	ED ARNOLD	Date Rec.:	12/15/2013
Attention:		S.O.#	900974627
Lease	RU	Job Type:	SURFACE
Well #	311-5		

Specific Gravity	MAX	1
pH	8	7
Potassium (K)	5000	200 Mg / L
Calcium (Ca)	500	120 Mg / L
Iron (FE2)	300	0 Mg / L
Chlorides (Cl)	3000	0 Mg / L
Sulfates (SO ₄)	1500	<200 Mg / L
Chlorine (Cl ₂)		0 Mg / L
Temp	40-80	45 Deg
Total Dissolved Solids		--- Mg / L

Respectfully: ED ARNOLD

Title: CEMENTING SUPERVISOR

Location: Grand Junction, CO

NOTICE: This report is limited to the described sample tested. Any person using or relying on this report agrees that Halliburton shall not be liable for any loss or damage whether due to act or omission resulting from such report or its use

Sales Order #: 900974627	Line Item: 10	Survey Conducted Date: 12/15/2013
Customer: WPX ENERGY ROCKY MOUNTAIN LLC-EBUS		Job Type (BOM): CMT SURFACE CASING BOM
Customer Representative: RICK OAKS		API / UWI: (leave blank if unknown) AFEY0ZWHEIKNVZTJAAA
Well Name: RU		Well Number: 311-5
Well Type: Development Well	Well Country: United States of America	
H2S Present:	Well State: Colorado	Well County: Garfield

Dear Customer,

We hope that you were satisfied with the service quality of this job performed by Halliburton. It is the aim of our management and service personnel to deliver equipment and service of a standard unmatched in the service sector of the energy industry.

Please take the time to let us know if our performance met with your satisfaction. Please be as critical as possible to ensure we constantly improve our service. Your comments are of great value to us and are intended for the exclusive use of Halliburton.

CUSTOMER SATISFACTION SURVEY

CATEGORY	CUSTOMER SATISFACTION RESPONSE	
Survey Conducted Date	The date the survey was conducted	12/15/2013
Survey Interviewer	The survey interviewer is the person who initiated the survey.	EDWARD ARNOLD (HX46731)
Customer Participation	Did the customer participate in this survey? (Y/N)	Yes
Customer Representative	Enter the Customer representative name	RICK OAKS
HSE	Was our HSE performance satisfactory? Circle Y or N	Yes
Equipment	Were you satisfied with our Equipment? Circle Y or N	Yes
Personnel	Were you satisfied with our people? Circle Y or N	Yes
Customer Comment	Customer's Comment	GREAT JOB THANKS RICK

CUSTOMER SIGNATURE

Sales Order #: 900974627	Line Item: 10	Survey Conducted Date: 12/15/2013
Customer: WPX ENERGY ROCKY MOUNTAIN LLC-EBUS		Job Type (BOM): CMT SURFACE CASING BOM
Customer Representative: RICK OAKS		API / UWI: (leave blank if unknown) AFEY0ZWHEIKNVZTJAAA
Well Name: RU		Well Number: 311-5
Well Type: Development Well	Well Country: United States of America	
H2S Present:	Well State: Colorado	Well County: Garfield

KEY PERFORMANCE INDICATORS

General	
Survey Conducted Date The date the survey was conducted	12/15/2013

Cementing KPI Survey	
Type of Job Select the type of job. (Cementing or Non-Cementing)	0
Select the Maximum Deviation range for this Job What is the highest deviation for the job you just completed? This may not be the maximum well deviation.	Vertical
Total Operating Time (hours) Total Operating Hours Including Rig-up, Pumping, Rig-down. Enter in decimal format.	3
HSE Incident, Accident, Injury HSE Incident, Accident, Injury. This should be recordable incidents only.	No
Was the job purpose achieved? Was the job delivered correctly as per customer agreed design?	Yes
Operating Hours (Pumping Hours) Total number of hours pumping fluid on this job. Enter in decimal format.	1
Customer Non-Productive Rig Time (hrs) Lost time due to Halliburton in the start, execution, or completion of an ordered service or product, or delays in a follow-on service. Enter in decimal format. 0 if none.	0
Type of Rig Classification Job Was Performed Type Of Rig (classification) Job Was Performed On	Drilling Rig (Portable)
Number Of JSAs Performed Number Of Jsas Performed	5
Number of Unplanned Shutdowns Unplanned shutdown is when injection stops for any period of time.	0
Was this a Primary Cement Job (Yes / No)	Yes

Sales Order #: 900974627	Line Item: 10	Survey Conducted Date: 12/15/2013
Customer: WPX ENERGY ROCKY MOUNTAIN LLC-EBUS		Job Type (BOM): CMT SURFACE CASING BOM
Customer Representative: RICK OAKS		API / UWI: (leave blank if unknown) AFEY0ZWHEIKNVZTJAAA
Well Name: RU		Well Number: 311-5
Well Type: Development Well	Well Country: United States of America	
H2S Present:	Well State: Colorado	Well County: Garfield

Primary Cement Job= Casing job, Liner job, or Tie-back job.	
Did We Run Wiper Plugs? Did We Run Top And Bottom Casing Wiper Plugs?	Top
Mixing Density of Job Stayed in Designed Density Range (0-100%) Density Range defined as +/- .20 ppg. Calculation: Total BBLs cement mixed at designed density divided by total BBLs of cement multiplied by 100	99
Was Automated Density Control Used? Was Automated Density Control (ADC) Used ?	Yes
Pump Rate (percent) of Job Stayed At Designed Pump Rate Pump Rate range defined as +/- 1bbl/min. Calculation: Total BBLs of fluid pumped at the designed rate divided by Total BBLs of fluid pumped, multiplied by 100	99
Nbr of Remedial Sqz Jobs Rqd - Competition Number Of Remedial Squeeze Jobs Required After Primary Job Performed By Competition	0
Nbr of Remedial Plug Jobs Rqd - HES Number Of Remedial Plug Jobs Needed After Primary Plug Pumped By HES	0
Nbr of Remedial Sqz Jobs Rqd - HES Number Of Remedial Squeeze Jobs Required After Primary Job Performed By HES	0