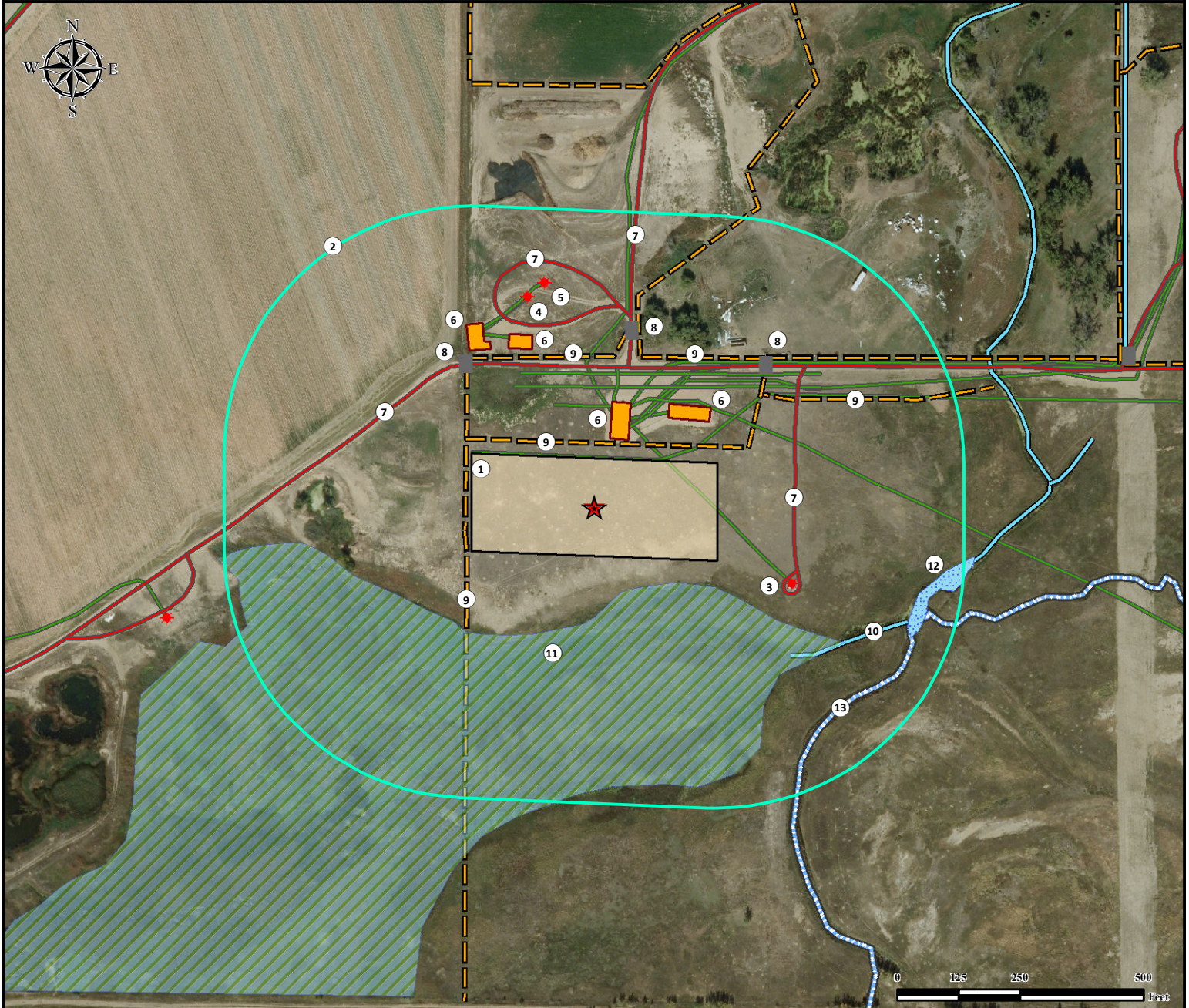


# Location Drawing

## ACORD STATE 34N-30HZ Facility

SE¼ SE¼ SECTION 30, TOWNSHIP 3 NORTH, RANGE 67 WEST OF THE 6TH PRINCIPAL MERIDIAN



- |  |  |  |
|--|--|--|
| 1. Proposed Facility ACORD STATE 34N-30HZ.             | 6. Existing Facilities are ±139' NE, ±232' NE, ±344' NW, and ±384' NW. | 9. Fences are ±127' N, ±264' W, ±302' N, ±316' NE, and ±405' NE. |
| 2. 500' Radius.  | 7. Private Roads are ±281' N, ±288' NE, ±377' N, and ±402' E.          | 10. Ditch is ±498' SE.   |
| 3. Existing Well HSR-ACORD 16-30 is ±429' SW.          | 8. Cattle Guards are ±363' NE, ±389' NW, and ±447' NE.                 | 11. Marshland is ±183' SE.                                       |
| 4. Existing Well THEO J. RADEMACHER UNIT 2 is ±446' NW |  | 12. Pond is ±674' SE.  |
| 5. Existing Well AURORA 37-30 is ±464' NW.             |  | 13. Stream is ±639' SE.  |

### Legend

- |               |                    |              |
|---------------|--------------------|--------------|
| Existing Well | Facility Enclosure | Ditch        |
| Cattle Guard  | Proposed Facility  | Private Road |
| Marshland     | 500' Radius        | Fence        |
| Pond          | Stream             | Pipeline     |

### Reference Location

\*\* All measurements are made from Reference Point \*\*

Lat: 40.192570° Long: -104.927104° (NAD83)  
Elevation: 4820 Feet

FSL: 1005' FEL: 1065'

Nearest Building Unit: >1000' SE



Use our resources to find yours!  
[www.petro-fs.com](http://www.petro-fs.com)  
(303) 928-7128

Field Date: 07/17/2013  
Drafting Date: 10/22/2013  
Drafter: CPO  
Revision: 3

Surface Use: Rangeland

Data Sources:  
- Aerial courtesy of Anadarko Petroleum Corporation (2010)

Prepared for:

**KERR-MCGEE OIL & GAS ONSHORE LP**