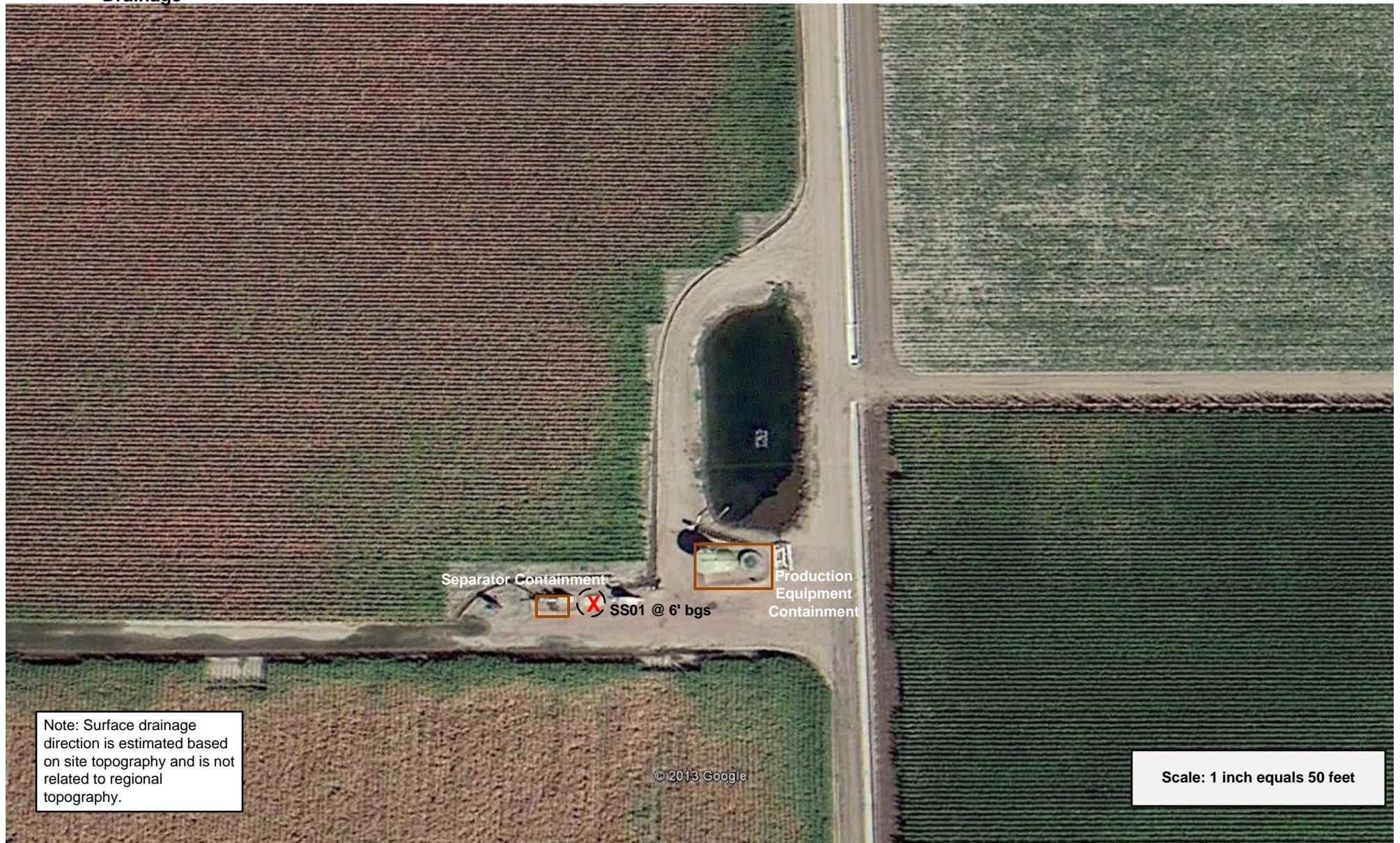
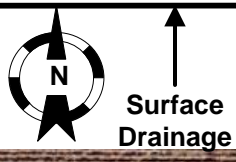


Figure 1

Site Location Map
Steinmetz #1, 21-17
NW/4 S17 T5N R64W
Weld County, Colorado

Drawn By: DBA
Date: 11/22/2013





Note: Surface drainage direction is estimated based on site topography and is not related to regional topography.

DRAWN BY: CAW
DATE: 11/21/2013

Facility Diagram
PDC Energy – DJ Basin
Steinmetz #1, 21-17
NW/4 S17 T5N R64W
Weld County, CO



6899 Pecos Street
Unit C
Denver, CO 80221

LEGEND
 - - - Former Vault Location
 — Earthen Berm
 X Soil Sample Location



FIGURE 2
SAMPLE LOCATION
MAP
Not to Scale

TABLE 1
STEINMETZ #1, 21-17
SOIL ANALYTICAL RESULTS SUMMARY TABLE

Sample ID	Date Sampled	Depth (Feet bgs)	PID Readings (ppm)	Benzene (mg/kg)	Toluene (mg/kg)	Ethylbenzene (mg/kg)	Total Xylenes (mg/kg)	Naphthalene (mg/kg)	TPH ⁽²⁾ (mg/kg)
SS01	11/15/2013	6	23.4	<0.002	<0.005	<0.005	<0.010	<0.010	<50
COGCC standards for soil (mg/kg) ⁽¹⁾				0.17	85	100	175	23	500

Notes:

1). Standards for Soil are taken from 2 CCR 404-1, Table 910-1, effective April 1, 2009.

2). TPH - Total volatile and extractable petroleum hydrocarbons. Value calculated by adding GRO and DRO concentrations.

GRO - Gasoline range organics DRO - Diesel range organics

mg/kg - Milligrams per kilogram bgs - Below ground surface

ppm - Parts per million

Bold red values indicate an exceedance of the COGCC soil standards for the Site.

ATTACHMENT A

Summit Scientific

741 Corporate Circle – Suite I ♦ Golden, Colorado 80401

303.277.9310 - laboratory ♦ 303.277.9531 - fax

November 17, 2013

Brandon Bruns
PDC Energy
1775 Sherman St. STE. 3000
Denver, CO 80203
RE: Steinmetz #1,21-17

Enclosed are the results of analyses for samples received by Summit Scientific on 11/15/13 16:45. If you have any questions concerning this report, please feel free to contact me.

Sincerely,

A handwritten signature in black ink, appearing to read 'BS', with a long, sweeping horizontal line extending to the right.

Ben Shrewsbury
President / Laboratory Manager



PDC Energy
 1775 Sherman St. STE. 3000
 Denver CO, 80203

Project: Steinmetz #1,21-17

Project Number: [none]
 Project Manager: Brandon Bruns

Reported:
 11/17/13 21:05

ANALYTICAL REPORT FOR SAMPLES

Sample ID	Laboratory ID	Matrix	Date Sampled	Date Received
SS01@6'	R311105-01	Soil	11/15/13 10:30	11/15/13 16:45

B31105
Summit Scientific

741 Corporate Circle Suite 1 • Golden, Colorado 80401
 303-277-9310 • 303-374-5933 Fax

Client: 90 Energy Page 1 of 4
 Address: _____
 City/State/Zip: _____
 Project Manager: Brandon Bruns
 E-Mail: _____
 Project Name: STEINMETZ #1, 21-17
 Project Number: _____
 Phone: _____
 Fac: _____
 Sampler Name: C. W. (S) K.

Sample Description	Date Sampled	Time Sampled	Number of Containers	Preservative				Matrix				Analyze For:	Special Instructions	
				HCl	None	Zinc	Other (Specify)	Soil	Groundwater	Air - Canister Serial #	Other (Specify)			
SS01@6'	11/15/13 10:30		1	X				X						
Relinquished by:	Date Time: 11/15/13 15:00	Received by:	Date Time: 11/15/13 14:55	Turn Around Time (Check)				Notes:						
Relinquished by:	Date Time:	Received by:	Date Time:	Same Day	24 Hours	48 Hours	72 Hours	Standard	by TOM Saturday 11/16 please.					
Relinquished by:	Date Time:	Received in Lab by:	Date Time:	Sample Integrity:				Temperature: 2°C						
				Intact: Yes <input type="checkbox"/> No <input type="checkbox"/>										

www.sscientific.com



PDC Energy
1775 Sherman St. STE. 3000
Denver CO, 80203

Project: Steinmetz #1,21-17

Project Number: [none]
Project Manager: Brandon Brunns

Reported:
11/17/13 21:05

SS01@6'
R311105-01 (Soil)

Summit Scientific

Extractable Petroleum Hydrocarbons by 8015

Date Sampled: 11/15/13 10:30

Analyte	Result	Reporting Limit	Units	Dilution	Batch	Prepared	Analyzed	Method	Notes
C10-C28 (DRO)	ND	50	mg/kg	1	3111505	11/15/13	11/15/13	8015M	

Date Sampled: 11/15/13 10:30

Analyte	Result	Reporting Limit	Units	Dilution	Batch	Prepared	Analyzed	Method	Notes
Surrogate: <i>o</i> -Terphenyl		106 %	30-150		"	"	"	"	

Volatile Organic Compounds by EPA Method 8260B

Date Sampled: 11/15/13 10:30

Analyte	Result	Reporting Limit	Units	Dilution	Batch	Prepared	Analyzed	Method	Notes
Naphthalene	ND	0.010	mg/kg	1	3111504	11/15/13	11/15/13	EPA 8260B	
Benzene	ND	0.0020	"	"	"	"	"	"	
Toluene	ND	0.0050	"	"	"	"	"	"	
Ethylbenzene	ND	0.0050	"	"	"	"	"	"	
Xylenes (total)	ND	0.010	"	"	"	"	"	"	
Gasoline Range Hydrocarbons	ND	0.50	"	"	"	"	"	"	

Date Sampled: 11/15/13 10:30

Analyte	Result	Reporting Limit	Units	Dilution	Batch	Prepared	Analyzed	Method	Notes
Surrogate: 1,2-Dichloroethane-d4		102 %	23-173		"	"	"	"	
Surrogate: Toluene-d8		97.7 %	20-170		"	"	"	"	
Surrogate: 4-Bromofluorobenzene		101 %	21-167		"	"	"	"	

Summit Scientific

The results in this report apply to the samples analyzed in accordance with the chain of custody document. This analytical report must be reproduced in its entirety.



PDC Energy
 1775 Sherman St. STE. 3000
 Denver CO, 80203

Project: Steinmetz #1,21-17

Project Number: [none]
 Project Manager: Brandon Brunns

Reported:
 11/17/13 21:05

Extractable Petroleum Hydrocarbons by 8015 - Quality Control
Summit Scientific

Analyte	Reporting			Spike	Source	%REC		RPD		Notes
	Result	Limit	Units	Level	Result	%REC	Limits	RPD	Limit	

Batch 3111505 - EPA 3550A

Blank (3111505-BLK1)				Prepared & Analyzed: 11/15/13						
C10-C28 (DRO)	ND	50	mg/kg							
LCS (3111505-BS1)				Prepared & Analyzed: 11/15/13						
C10-C28 (DRO)	559	50	mg/kg	501	111	73-134				
Matrix Spike (3111505-MS1)				Source: R311107-01 Prepared & Analyzed: 11/15/13						
C10-C28 (DRO)	524	50	mg/kg	467	ND	112	50-148			
Matrix Spike Dup (3111505-MSD1)				Source: R311107-01 Prepared & Analyzed: 11/15/13						
C10-C28 (DRO)	534	50	mg/kg	463	ND	115	50-148	1.88	13	

Summit Scientific

The results in this report apply to the samples analyzed in accordance with the chain of custody document. This analytical report must be reproduced in its entirety.



PDC Energy
1775 Sherman St. STE. 3000
Denver CO, 80203

Project: Steinmetz #1,21-17

Project Number: [none]
Project Manager: Brandon Brunns

Reported:
11/17/13 21:05

Volatile Organic Compounds by EPA Method 8260B - Quality Control
Summit Scientific

Analyte	Reporting			Spike	Source	%REC		RPD		Notes
	Result	Limit	Units	Level	Result	%REC	Limits	RPD	Limit	

Batch 3111504 - EPA 5030 Soil MS

Blank (3111504-BLK1)

Prepared & Analyzed: 11/15/13

Naphthalene	ND	0.010	mg/kg							
Benzene	ND	0.0020	"							
Toluene	ND	0.0050	"							
Ethylbenzene	ND	0.0050	"							
Xylenes (total)	ND	0.010	"							
Gasoline Range Hydrocarbons	ND	0.50	"							
<i>Surrogate: 1,2-Dichloroethane-d4</i>	<i>0.0412</i>		<i>"</i>	<i>0.0397</i>		<i>104</i>		<i>23-173</i>		
<i>Surrogate: Toluene-d8</i>	<i>0.0406</i>		<i>"</i>	<i>0.0400</i>		<i>101</i>		<i>20-170</i>		
<i>Surrogate: 4-Bromofluorobenzene</i>	<i>0.0406</i>		<i>"</i>	<i>0.0400</i>		<i>102</i>		<i>21-167</i>		

LCS (3111504-BS1)

Prepared & Analyzed: 11/15/13

Naphthalene	ND	0.010	mg/kg					66-138		
Benzene	0.0961	0.0020	"	0.100		96.1		58-130		
Toluene	0.0994	0.0050	"	0.100		99.4		61-134		
Ethylbenzene	0.101	0.0050	"	0.100		101		74-139		
m,p-Xylene	0.202	0.010	"	0.200		101		73-137		
o-Xylene	0.0980	0.0050	"	0.100		98.0		73-141		
<i>Surrogate: 1,2-Dichloroethane-d4</i>	<i>0.0408</i>		<i>"</i>	<i>0.0397</i>		<i>103</i>		<i>23-173</i>		
<i>Surrogate: Toluene-d8</i>	<i>0.0402</i>		<i>"</i>	<i>0.0400</i>		<i>100</i>		<i>20-170</i>		
<i>Surrogate: 4-Bromofluorobenzene</i>	<i>0.0398</i>		<i>"</i>	<i>0.0400</i>		<i>99.5</i>		<i>21-167</i>		

Matrix Spike (3111504-MS1)

Source: R311107-01

Prepared & Analyzed: 11/15/13

Naphthalene	ND	0.010	mg/kg		ND			10-158		
Benzene	0.0933	0.0020	"	0.0975	ND	95.7		30-131		
Toluene	0.0986	0.0050	"	0.0975	ND	101		30-134		
Ethylbenzene	0.101	0.0050	"	0.0975	ND	104		22-153		
m,p-Xylene	0.202	0.010	"	0.195	ND	104		10-159		
o-Xylene	0.0987	0.0050	"	0.0975	ND	101		31-151		
<i>Surrogate: 1,2-Dichloroethane-d4</i>	<i>0.0398</i>		<i>"</i>	<i>0.0387</i>		<i>103</i>		<i>23-173</i>		
<i>Surrogate: Toluene-d8</i>	<i>0.0392</i>		<i>"</i>	<i>0.0390</i>		<i>100</i>		<i>20-170</i>		
<i>Surrogate: 4-Bromofluorobenzene</i>	<i>0.0394</i>		<i>"</i>	<i>0.0390</i>		<i>101</i>		<i>21-167</i>		

Summit Scientific

The results in this report apply to the samples analyzed in accordance with the chain of custody document. This analytical report must be reproduced in its entirety.



PDC Energy
 1775 Sherman St. STE. 3000
 Denver CO, 80203

Project: Steinmetz #1,21-17

Project Number: [none]
 Project Manager: Brandon Brunns

Reported:
 11/17/13 21:05

Volatile Organic Compounds by EPA Method 8260B - Quality Control
Summit Scientific

Analyte	Reporting		Spike Level	Source Result	%REC		RPD		Notes
	Result	Limit			Units	%REC	Limits	RPD	

Batch 3111504 - EPA 5030 Soil MS

Matrix Spike Dup (3111504-MSD1)	Source: R311107-01			Prepared & Analyzed: 11/15/13					
Naphthalene	ND	0.010	mg/kg	ND	ND	10-158			42
Benzene	0.0922	0.0020	"	0.0960	ND	96.0	30-131	1.20	34
Toluene	0.0971	0.0050	"	0.0960	ND	101	30-134	1.55	30
Ethylbenzene	0.0986	0.0050	"	0.0960	ND	103	22-153	2.59	24
m,p-Xylene	0.196	0.010	"	0.192	ND	102	10-159	3.24	68
o-Xylene	0.0951	0.0050	"	0.0960	ND	99.1	31-151	3.70	38
<i>Surrogate: 1,2-Dichloroethane-d4</i>	<i>0.0394</i>		<i>"</i>	<i>0.0381</i>		<i>103</i>	<i>23-173</i>		
<i>Surrogate: Toluene-d8</i>	<i>0.0389</i>		<i>"</i>	<i>0.0384</i>		<i>101</i>	<i>20-170</i>		
<i>Surrogate: 4-Bromofluorobenzene</i>	<i>0.0383</i>		<i>"</i>	<i>0.0384</i>		<i>99.9</i>	<i>21-167</i>		

Summit Scientific

The results in this report apply to the samples analyzed in accordance with the chain of custody document. This analytical report must be reproduced in its entirety.



PDC Energy
1775 Sherman St. STE. 3000
Denver CO, 80203

Project: Steinmetz #1,21-17

Project Number: [none]
Project Manager: Brandon Bruns

Reported:
11/17/13 21:05

Notes and Definitions

DET Analyte DETECTED
ND Analyte NOT DETECTED at or above the reporting limit
NR Not Reported
dry Sample results reported on a dry weight basis
RPD Relative Percent Difference

Summit Scientific

The results in this report apply to the samples analyzed in accordance with the chain of custody document. This analytical report must be reproduced in its entirety.