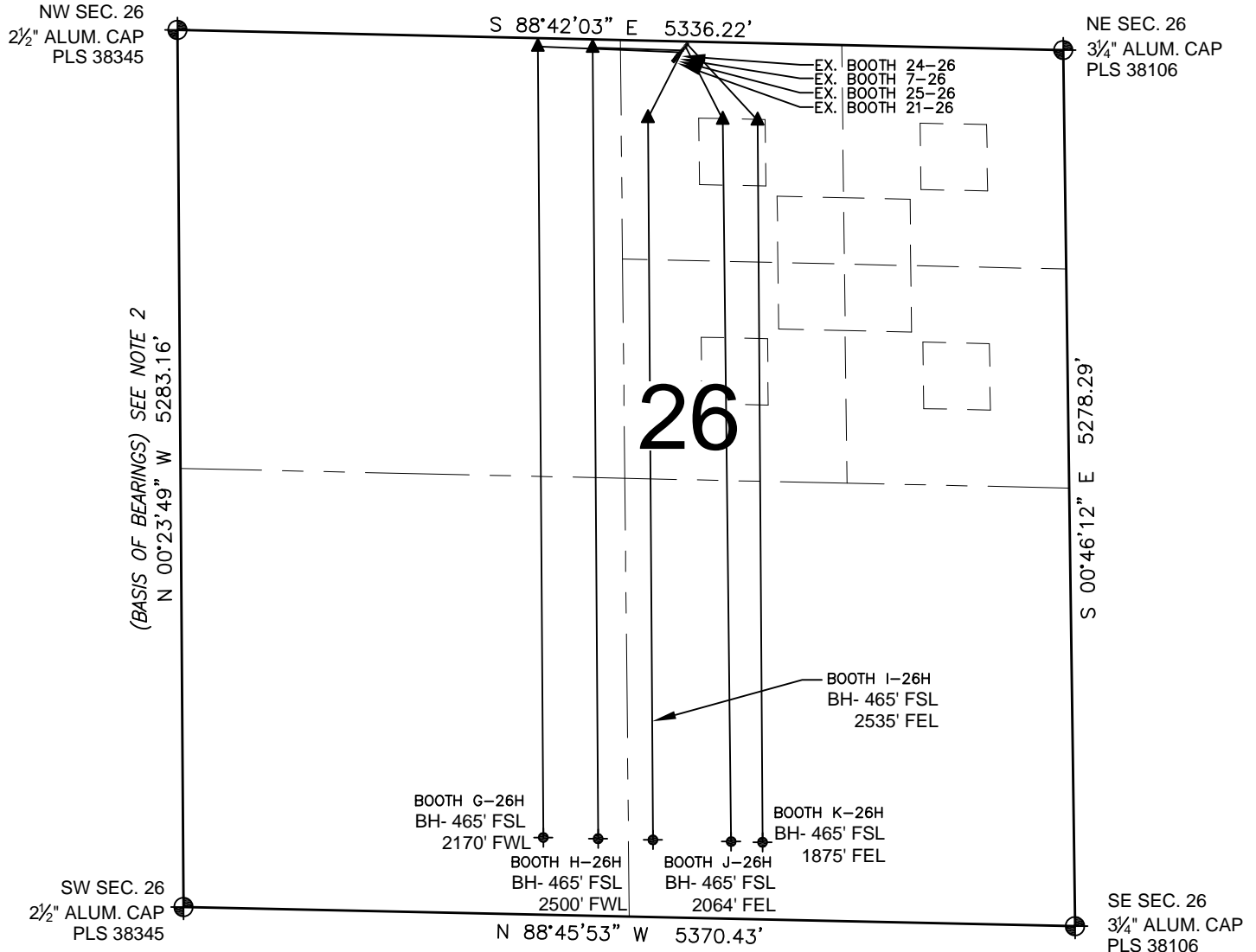


BOOTH 9 PAD MULTI-WELL PLAN

SECTION 26, TOWNSHIP 7 NORTH, RANGE 65 WEST, 6TH P.M.



LEGEND

- ⊕ = EXISTING MONUMENT
- = PROPOSED WELL
- ◆ = EXISTING WELL
- ⬮ = BOTTOM HOLE
- ▲ = LANDING POINT
- LP = LANDING POINT
- BH = BOTTOM HOLE

NOTES:

- THIS FIELD SURVEY CONFORMS TO THE MINIMUM STANDARDS SET BY THE C.O.G.C.C., RULE NO. 215
- BEARINGS AND DISTANCE SHOWN HEREON ARE GRID AND BASED ON THE COLORADO STATE PLANE COORDINATE SYSTEM, NAD 83/2011 BETWEEN MONUMENTS AS LABELED HEREON AND ELEVATIONS SHOWN ARE NAVD 88, AS DERIVED BY GPS OBSERVATIONS.
- GRID DISTANCES ARE SHOWN, AS MEASURED IN THE FIELD, WITH TIES TO WELLS MEASURED PERPENDICULAR TO SECTION LINES.

NOTES:

- BOOTH G-26H TO BE AT 66' FNL, 2305' FEL.
- BOTTOM HOLE AT 465' FSL & 2170' FWL.
- BOOTH H-26H TO BE AT 54' FNL, 2295' FEL.
- BOTTOM HOLE AT 465' FSL & 2500' FWL.
- BOOTH I-26H TO BE AT 41' FNL, 2285' FEL.
- BOTTOM HOLE AT 465' FSL & 2535' FEL.
- BOOTH J-26H TO BE AT 28' FNL, 2274' FEL.
- BOTTOM HOLE AT 465' FSL & 2064' FEL.
- BOOTH K-26H TO BE AT 16' FNL, 2264' FEL.
- BOTTOM HOLE AT 465' FSL & 1875' FEL.
- EX. BOOTH 24-26 IS AT 81' FNL, 2319' FEL.
- EX. BOOTH 7-26 IS AT 94' FNL, 2329' FEL.
- EX. BOOTH 25-26 IS AT 106' FNL, 2338' FEL.
- EX. BOOTH 21-26 IS AT 118' FNL, 2347' FEL.

PREPARED BY:



BAYSWATER EXPLORATION & PRODUCTION, LLC

FIELD DATE: 03-20-12	PAD NAME: BOOTH 9 PAD
DRAWING DATE: 04-04-14	SURFACE LOCATION: NW 1/4 NE 1/4, SEC. 26, T7N, R65W, 6TH P.M.
BY: SNC	CHECKED: MLP
	WELD COUNTY, COLORADO

