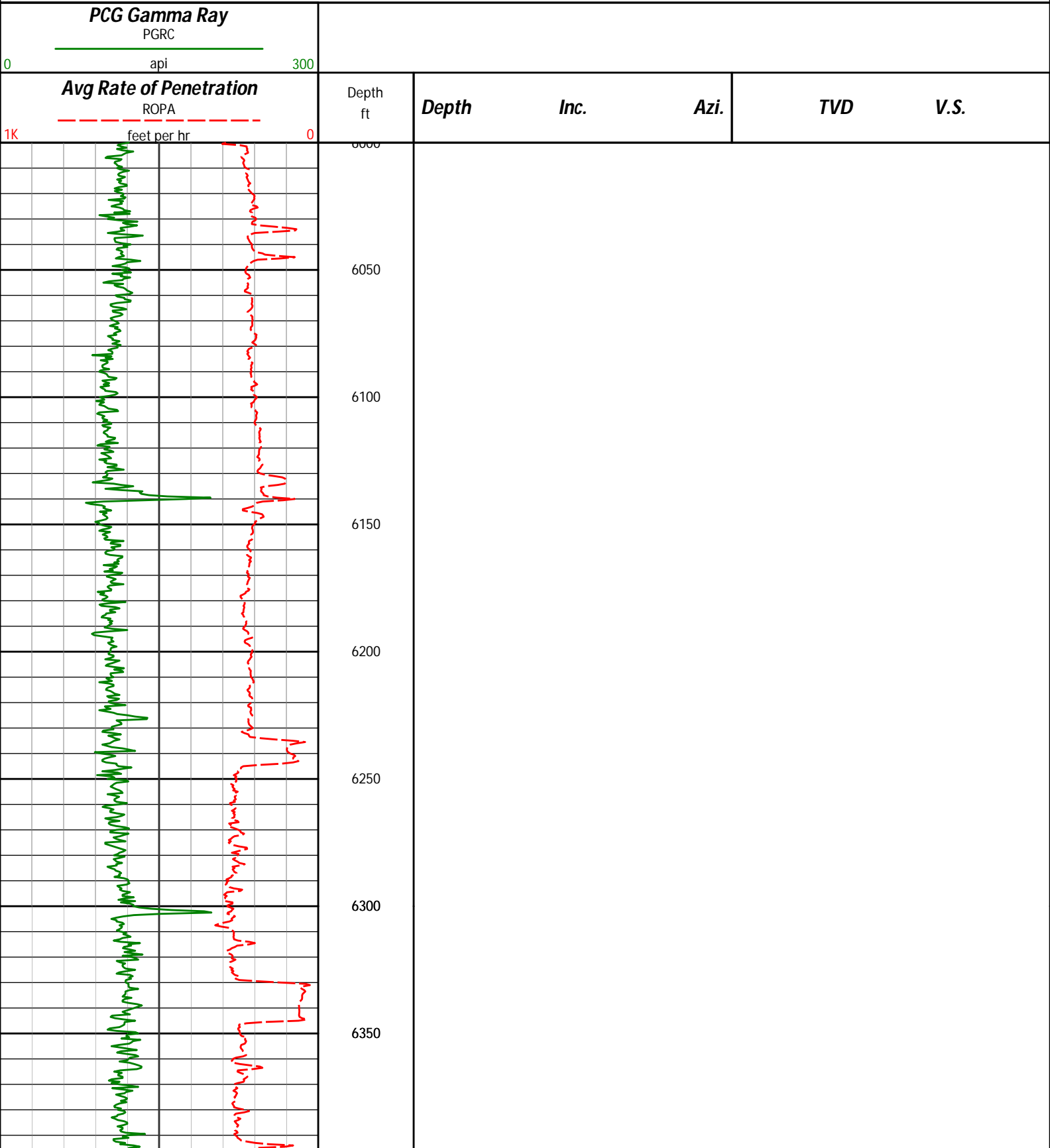


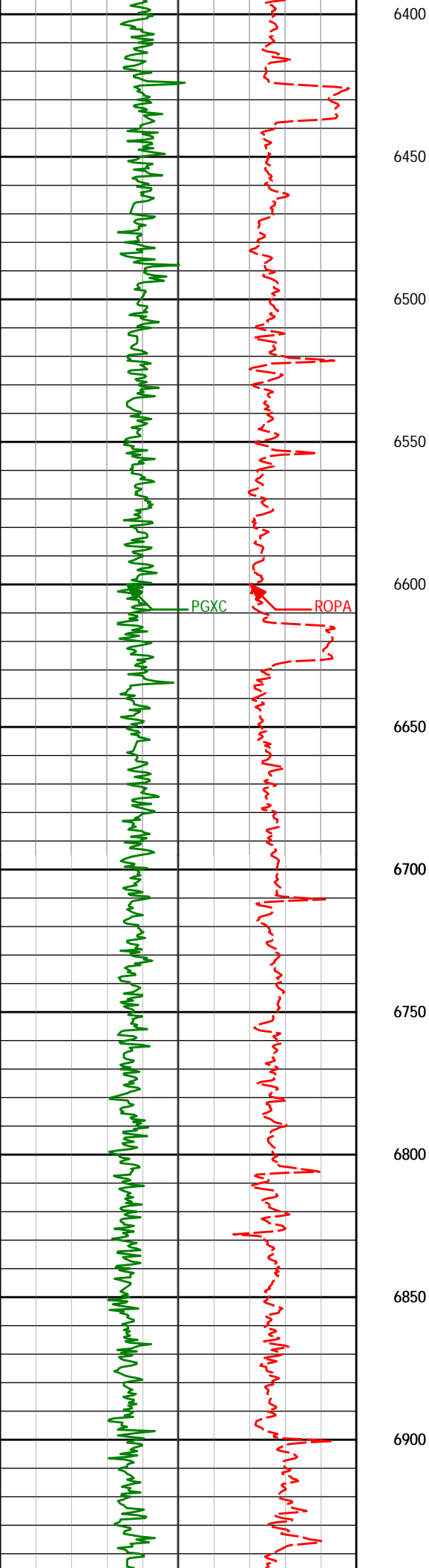
# HALLIBURTON

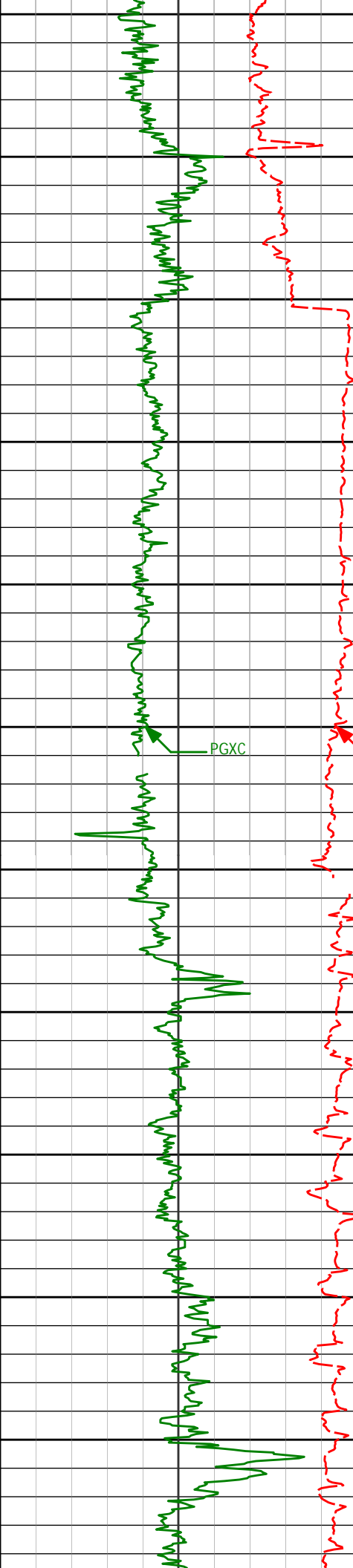
Sperry Drilling Services

## MD Main Log 1:600

Conoco Phillips  
Tebo 3-1H  
H&P 280  
Arapahoe County



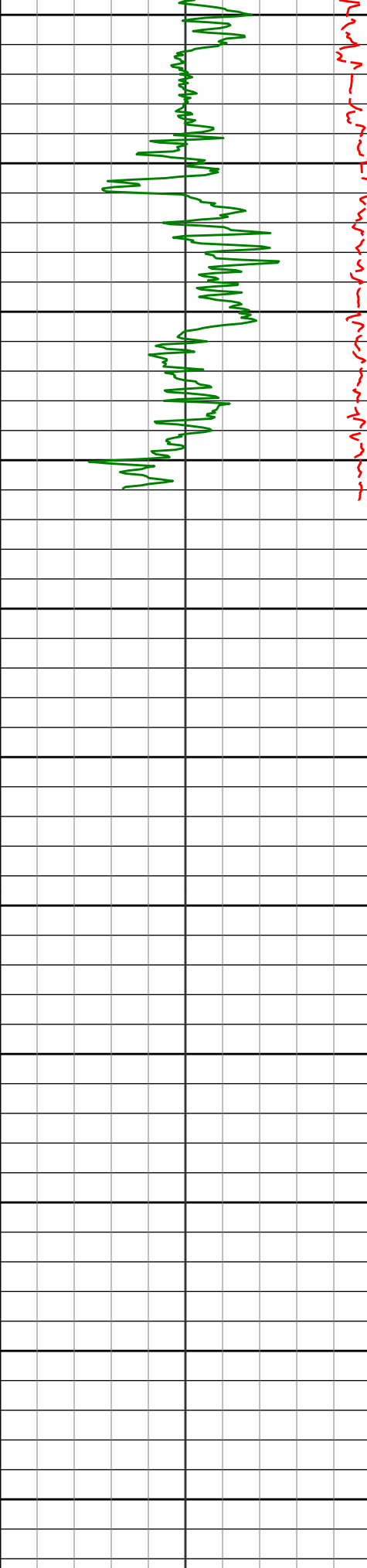




6950					
7000					
7050					
7100					
7150	7153'	17.72°	271.82°	7149.99'	-2.55'
	7185'	20.30°	272.77°	7180.24'	7.87'
7200	7216'	20.48°	273.81°	7209.30'	18.65'
	7248'	20.59°	273.22°	7239.27'	29.86'
7250	7280'	22.31°	270.55°	7269.05'	41.56'
	7311'	24.85°	266.73°	7297.46'	53.95'
7300	7343'	27.03°	265.40°	7326.23'	67.90'
	7374'	29.69°	264.63°	7353.51'	82.57'
7350	7406'	32.28°	265.85°	7380.94'	98.97'
	7438'	34.91°	267.49°	7407.60'	116.64'
7400	7469'	37.85°	269.26°	7432.55'	135.02'
	7501'	40.75°	269.70°	7457.31'	155.28'
7450	7533'	43.51°	270.00°	7481.05'	176.74'

PGXC

ROPA



7500	7564'	46.56°	269.93°	7502.95'	198.67'
	7596'	50.06°	269.96°	7524.23'	222.56'
7550	7628'	53.31°	270.29°	7544.07'	247.67'
	7659'	56.03°	270.05°	7561.99'	272.96'
	7691'	59.19°	269.64°	7579.13'	299.97'
7600	7723'	62.65°	269.29°	7594.68'	327.93'
	7754'	65.90°	268.98°	7608.14'	355.85'
	7786'	69.29°	268.24°	7620.33'	385.42'
	7817'	72.91°	269.20°	7630.37'	414.73'
	7849'	76.14°	270.97°	7638.91'	445.56'
7650	7881'	78.64°	269.59°	7645.90'	476.79'
	7912'	82.13°	267.71°	7651.07'	507.34'
	7973'	83.92°	265.57°	7658.48'	567.76'
	8025'	83.92°	265.57°	7663.99'	619.29'
7700					
7750					
7800					
7850					
7900					
7950					
8000					

<i>Avg Rate of Penetration</i> ROPA	Depth ft	<i>Depth</i>	<i>Inc.</i>	<i>Azi.</i>	<i>TVD</i>	<i>V.S.</i>
--	-------------	--------------	-------------	-------------	------------	-------------

1K	feet per hr	0	
	<b>PCG Gamma Ray</b>		
	PGRC		
0	api	300	