



Weatherford®

Surface Logging Systems

Scale 1:240 (5"=100') Imperial
Measured Depth Log

Well Name: **TEBO 3-1H (HORZ. SEC./LATERAL)**
Location: **NE/NE Sec. 3 T5S, R64W. Arapahoe County, CO**
License Number: **API- 05-005-07197** Region: **DJ BASIN**
Spud Date: **11/13/2012** Drilling Completed: **12/4/2012**
Surface Coordinates: **599' FNL & 400' FEL of NE/NE Sec. 3, T5S. R64W, Arapahoe County, CO**

Bottom Hole **N 24.84'**
Coordinates: **W 4372.05' FROM SURFACE LOCATION**
Ground Elevation (ft): **5875'** K.B. Elevation (ft): **5899'**
Logged Interval (ft): **8025'** To: **11780'** Total Depth (ft): **11780'**
Formation: **NIOBRARA**
Type of Drilling Fluid: **INVERT(OBM) & WATER BASE**

Printed by HORIZONTAL.LOG from WellSight Systems 1-800-447-1534 www.WellSight.com

Tooke Rockies, Inc.
(A Weatherford Company)

884 Implement Dr.
Dickinson, ND 58601
701-227-4408

717 West Platte
PO BOX 435
Casper, WY 82601
307-265-2124

OPERATOR

Company: **CONOCOPHILLIPS**
Address: **600 N. Dairy Ashford
WL 3 3056
Houston, TX 77079**

GEOLOGIST

Name: **TODD THIESSE, Douglas Bower**
Company: **WEATHERFORD SLS/TOOKE ROCKIES**
Address: **PO BOX 435
CASPER, WY 82602
307.265.2124**

OTHER SYMBOLS

INTERVALS

- Core
- ◻ Dst

EVENTS

- ▽ Rft
- ▾ Sidewall

OIL SHOWS

- Even
- ◉ Spotted
- ◊ Ques
- ◻ Dead

POROSITY TYPE

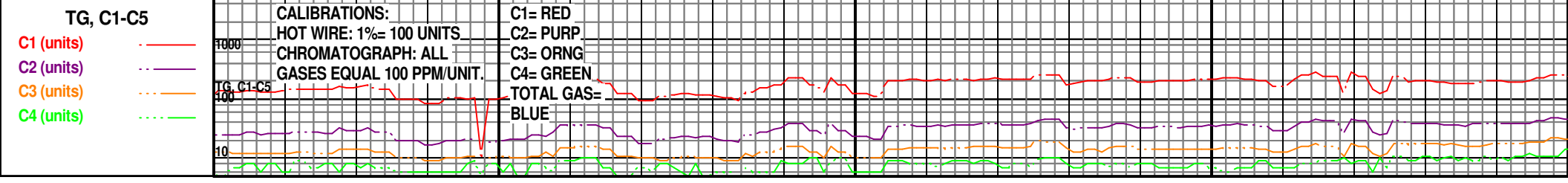
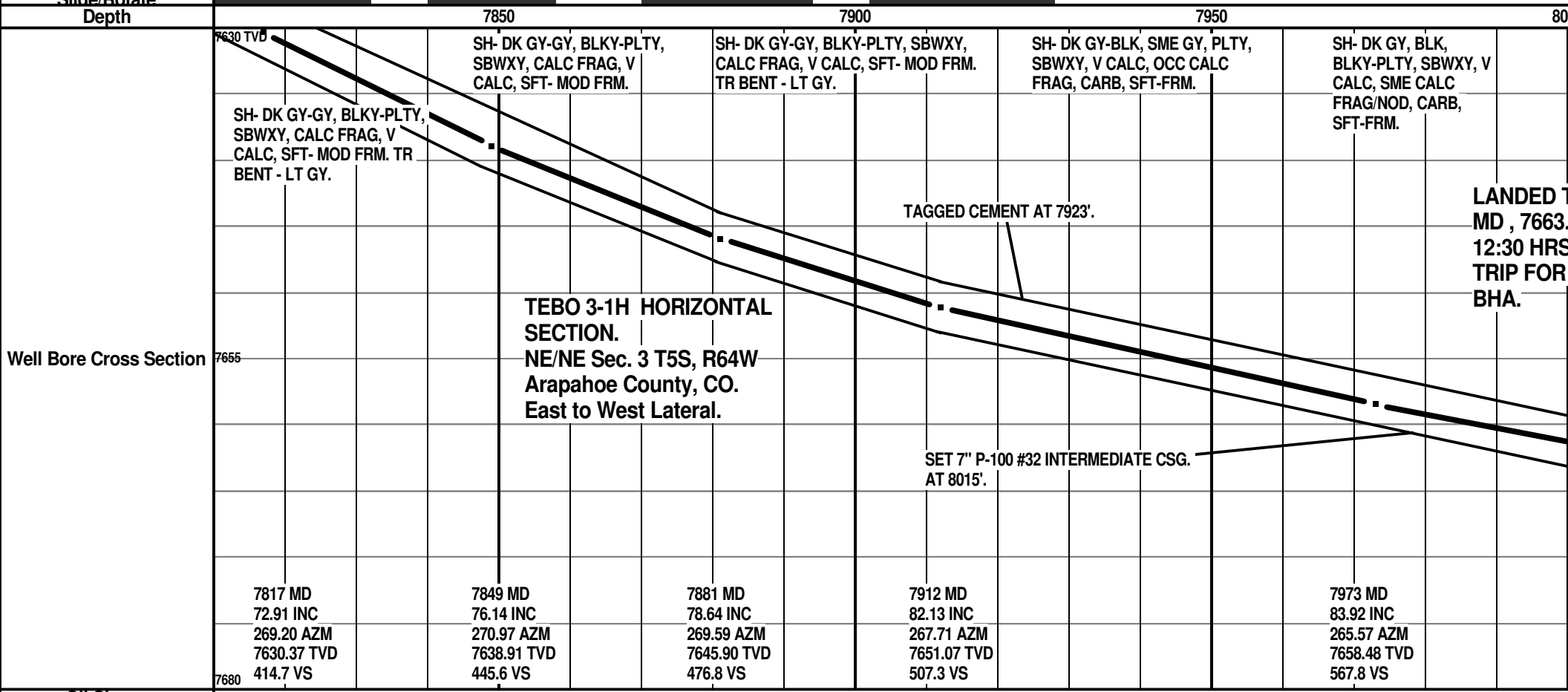
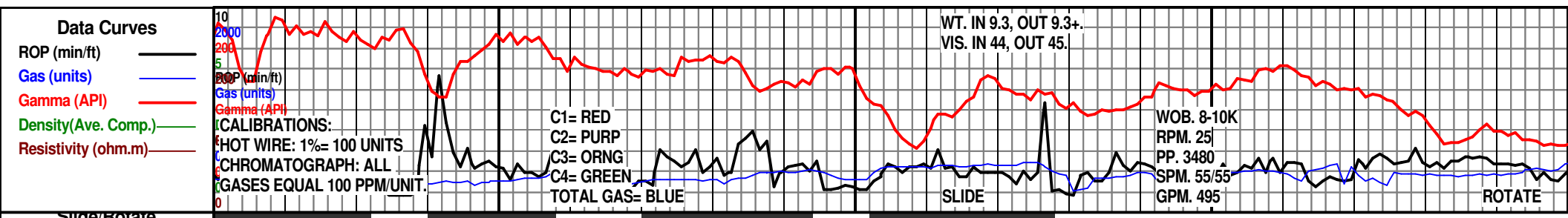
- ⊞ Earthy
- ⊞ Fenest
- ⊞ Fracture
- ⊞ Inter
- ⊞ Moldic
- ⊞ Organic

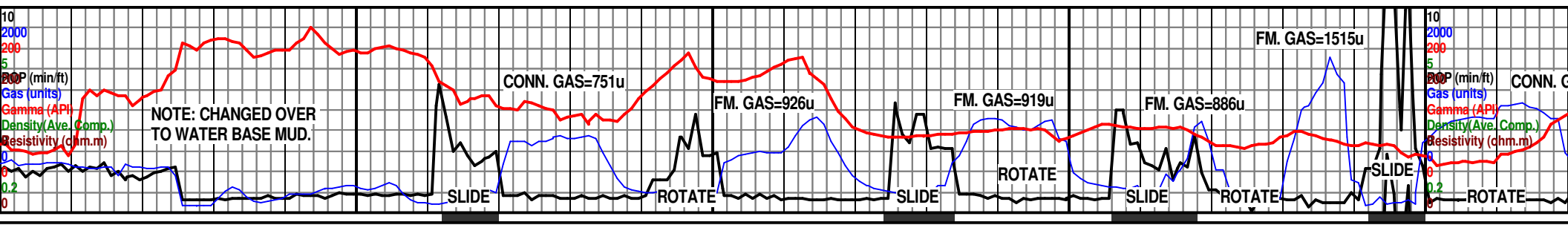
- ⊞ Pinpoint
- ⊞ Vuggy

- #### ROUNDING
- ⊞ Rounded
 - ⊞ Subrnd
 - ⊞ Subang

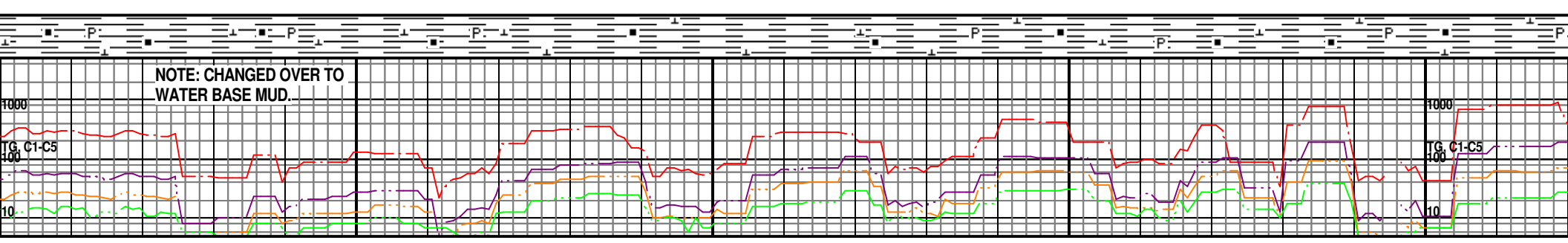
- ⊞ Angular

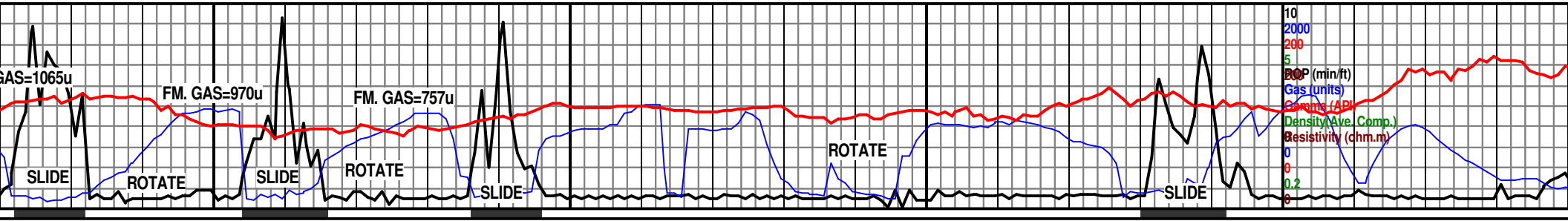
- #### SORTING
- ⊞ Well
 - ⊞ Moderate
 - ⊞ Poor



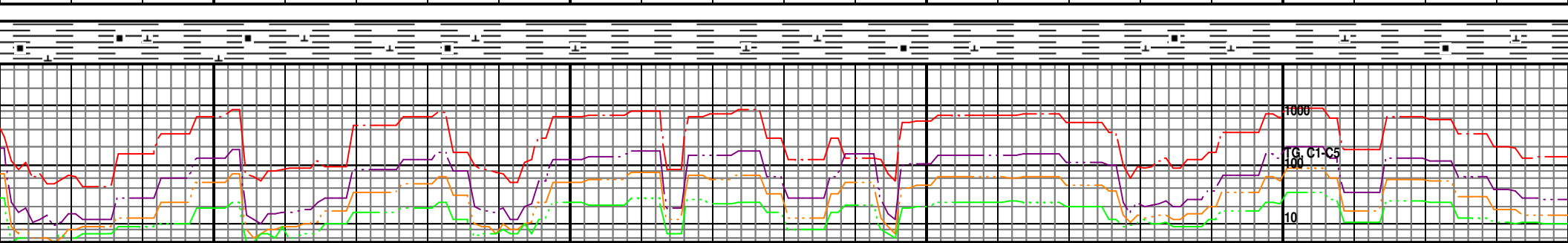


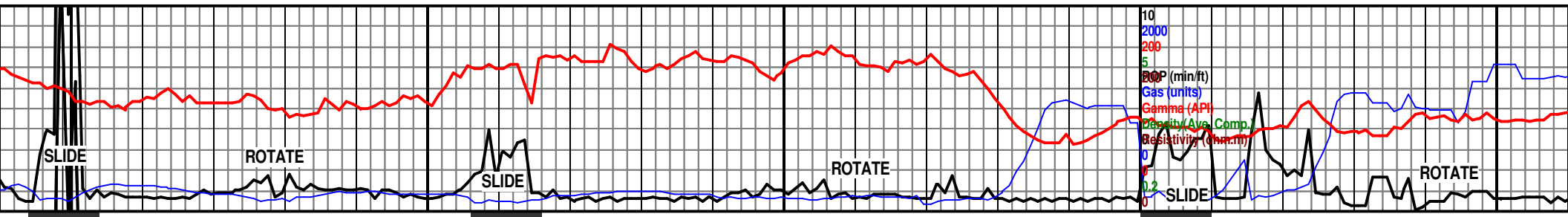
7630 TVD	8050	8100	8150	8200	7630 TVD
SH- DK GY-BLK, BLKY-PLTY, SBWXY, CARB, V CALC, TR PYR, SFT-FRM.	SH- GY-DK GY, BLKY-PLTY, SBWXY, CARB, V CALC, TR PYR, SFT-FRM. NO FLOR. IN DRY CUTNGS, SLOW, EVEN, MLKY BRIGHT YELLOW CUT W/ SPOTTY RESD RING. NO STRMNG CUT.	SH- LT GY-GY, BLKY-PLTY, SBWXY, CARB, V CALC, OCC CALC FRAG, CALC FILLED FRACS, SFT-MOD FRM.	SH- LT GY-GY, BLKY-PLTY, SBWXY, CARB, V CALC, CALC FRAGS, CALC FILLED FRACS, SFT-MOD FRM, TR PYR. IN DRY CUTNGS, SLOW, EVEN, FAINT YELLOW CUT W/ LT RESD RING. NO STRMNG CUT.	SH- LT GY-GY, BLKY-PLTY, SBWXY, CARB, V CALC, CALC FRAGS, CALC FILLED FRACS, SFT-MOD FRM, TR PYR. LT YELLOW NAT FLUOR. IN DRY CUTNGS EVEN, BRIGHT YELLOW CUT W/ SPOTTY RESD RING. NO STRMNG CUT.	SH- LT GY-GY, BLKY-PLTY, SBWXY, CARB, V CALC, CALC FRAGS, CALC FILLED FRACS, SFT-MOD FRM, TR PYR. LT YELLOW NAT FLUOR. IN DRY CUTNGS EVEN, BRIGHT YELLOW CUT W/ SPOTTY RESD RING. NO STRMNG CUT.
	MUD WT. 9.3 IN, 9.3 OUT VIS. 42 IN, 39 OUT				
	NEW BIT # 5, SECURITY, FXD54, 6" PDC, 5X16 JETS, IN AT 8025'. MUD MOTOR IS 1.5°. SURVEY IS 43' BEHIND BIT. CHANGE OUT MUD FROM OBM TO WATER BASE.	WT. 9.3, VIS. 41, PV, 5, YP. 6, WL. 9.6, FC. 2/32, CORR SLDS. 3.7, pH. 6.7, CI. 1450, LGS/HGS. 0.2/3.5%.	11/29/2012	WT. 9.3, VIS. 39, PV, 7, YP. 8, WL. 6.1, FC. 2/32, CORR SLDS. 4.0, pH. 8.9, CI. 1450, LGS/HGS. 0.8/3.2%. WOB= 2.2-4.4K RPM= 30 PP= 1827-1873 SPM= 60 GPM= 271	11/30/2012
		TOP TARGET LINE BASED ON A 89.40°(0.60°) DIP.			
				TRIP OUT AT 8180' TO PICK UP DIR TOOLS.	
				BIT#6, RE-RUN# 5, SECURITY, FXD54, 6" PDC, 5X16 JETS, IN AT 8180'.	Mud Motor is 1.5° Gamma is 50.25' be Survey is 62' behind
8017 MD 84.00 INC 268.00 AZM 7663.11 TVD 611.4 VS	8049 MD 84.48 INC 269.77 AZM 7666.32 TVD 643.2 VS	8080 MD 85.56 INC 271.47 AZM 7669.02 TVD 674.1 VS	8112 MD 86.42 INC 273.23 AZM 7671.25 TVD 706.0 VS	8129 MD 87.70 INC 274.16 AZM 7672.21 TVD 722.9 VS	8160 MD 88.46 INC 275.86 AZM 7673.39 TVD 753.8 VS
					8192 MD 89.20 INC 276.09 AZM 7674.04 TVD 785.7 VS





	8250	8300	8350	8400
WXY, CARB, V CALC FILLED YELLOW NAT, BRIGHT D RING. NO	SH- LT GY-GY, SME BLK, PLTY, SBWXY, CARB, V CALC, ABT CALC FRACS, SME CALC FILLED FRACS, SFT-FRM. V FAINT YELLOW NAT FLUOR. IN DRY CUTNGS EVEN, YELLOW CUT W/ SPOTTY RESD RING. NO STRMNG CUT.	SH- DK GY-BLK, BLKY-PLTY, SBWXY, V CALC-LMY, CARB IN PT, ABNDT CALC FRAC, SFT-FRM. MLKY CUT WHEN DRY.	SH- DK GY-GY, BLKY-PLTY, SBWXY, V CALC-LMY, CARB IN PT, ABNDT CALC FRAC, SFT-FRM. MLKY CUT WHEN DRY.	7630 TVD SH- GY-DK GY, OCC LT GY, PLTY, SBWXY, SME CARB LAM, V CALC-L SLTY, ABNDT CALC FRAC, SFT-FRM MLKY CUT WHEN DRY.
	MUD WT. 9.3 IN, 9.3 OUT VIS. 40 IN, 39 OUT	WT. 9.3, VIS. 38, PV, 7, YP. 9, WL. 4.6, FC. 2/32, CORR SLDS. 5.5, pH. 8.8, Cl. 1600, LGS/HGS. 3.6/2.0%. w/ 3% lub.		
		WOB= 6.6-8.5K RPM= 50 PP= 2660-2702 SPM= 60		
Behind bit. d bit.				
8224 MD 89.51 INC 275.76 AZM 7674.40 TVD 817.5 VS	8255 MD 89.44 INC 274.64 AZM 7674.69 TVD 848.4 VS	8287 MD 89.51 INC 273.45 AZM 7674.98 TVD 880.4 VS	8319 MD 89.51 INC 273.45 AZM 7675.26 TVD 912.3 VS	8350 MD 89.63 INC 273.19 AZM 7675.49 TVD 943.7 VS
				8382 MD 89.88 INC 272.46 AZM 7675.63 TVD 975.4 VS
				8414 MD 89.81 INC 272.31 AZM 7675.71 TVD 1007.2 VS
				7680





8450	8500	8550	8600	8650
<p>SH- GY-LT GY, DK GY, PLTY, SBWXY, OCC CARB LAM, V CALC-LMY, SLTY IN PT, INCR CALC FRAC, CHALKY, SFT, SL MLKY CUT WHEN DRY. W/ TR CHT NOD- CLR TO ROSE.</p>	<p>SH- LT GY-GY, DK GY, PLTY, SBWXY, CARB LAM, ABNDT CALC NOD & FRAC, MANY COCCOLITHOPHORES, CHALKY, SFT, MLKY CUT WHEN DRY.</p>	<p>SH- LT GY-GY, SME DK GY, BLKY-PLTY, SBWXY, SME CARB LAM, ABNDT CALC NOD & FRAC, DECR COCCO, SME PYR, SFT-FRM, MLKY CUT WHEN DRY.</p>	<p>SH- LT GY-GY, SME DK GY, BLKY-PLTY, SBWXY, SME CARB LAM, ABNDT CALC NOD & FRAC, DECR COCCO, SME PYR, SFT-FRM, MLKY CUT WHEN DRY.</p>	<p>SH- GY-LT GY, BLKY-PLTY, SBWXY, CARB LAM, ABNDT CALC FRAC, OCC COCCO, V CALC-LMY, SFT-FRM, MLKY CUT WHEN DRY.</p>
<p>8445 MD 89.63 INC 271.88 AZM 7675.86 TVD 1038.2 VS</p>	<p>8508 MD 89.81 INC 271.56 AZM 7676.17 TVD 1101.2 VS</p>	<p>8540 MD 89.69 INC 271.56 AZM 7676.31 TVD 1133.2 VS</p>	<p>8613 MD 90.49 INC 270.97 AZM 7676.20 TVD 1206.2 VS</p>	<p>8635 MD 90.31 INC 270.53 AZM 7676.04 TVD 1228.2 VS</p>

TOP TARGET LINE
BASED ON A
89.40°(0.60°) DIP.

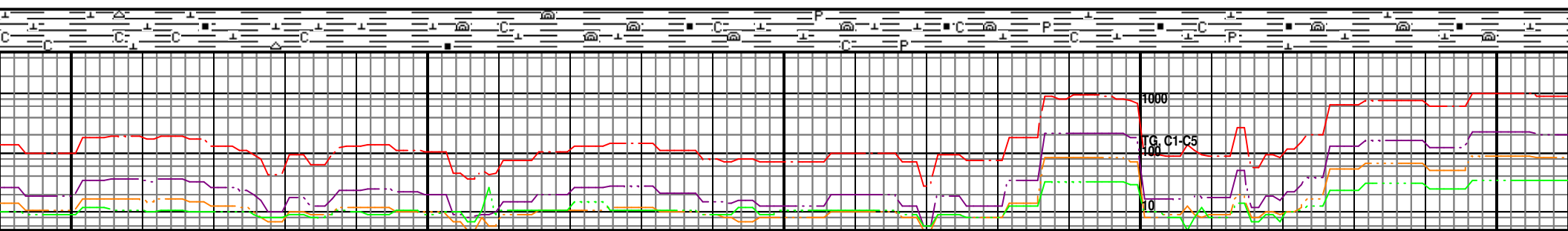
MUD WT. 9.3 IN, 9.3 OUT VIS.
40 IN, 42 OUT

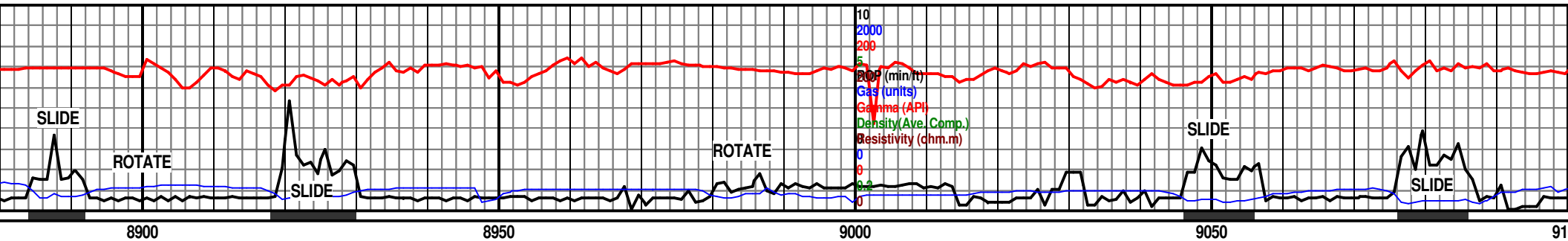
WOB. 6-10K
RPM. 13-66
PP. 2732
SPM. 60
GPM. 269

7630 TVD

7655

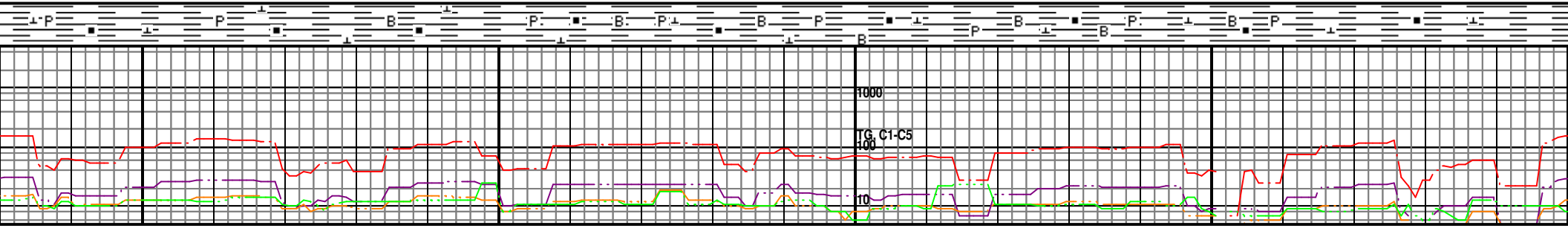
7680

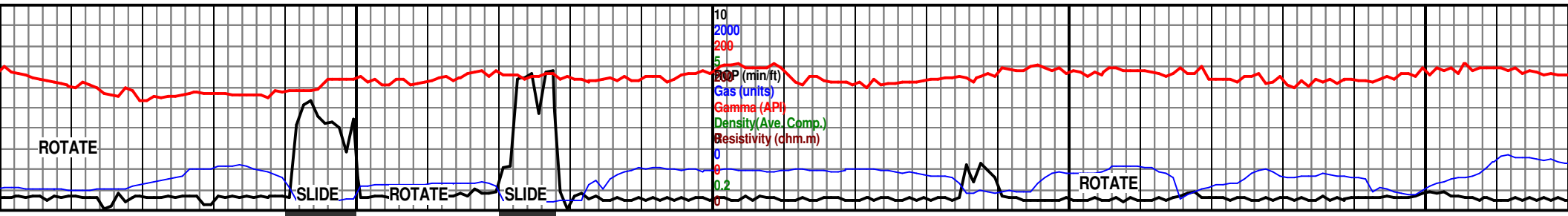




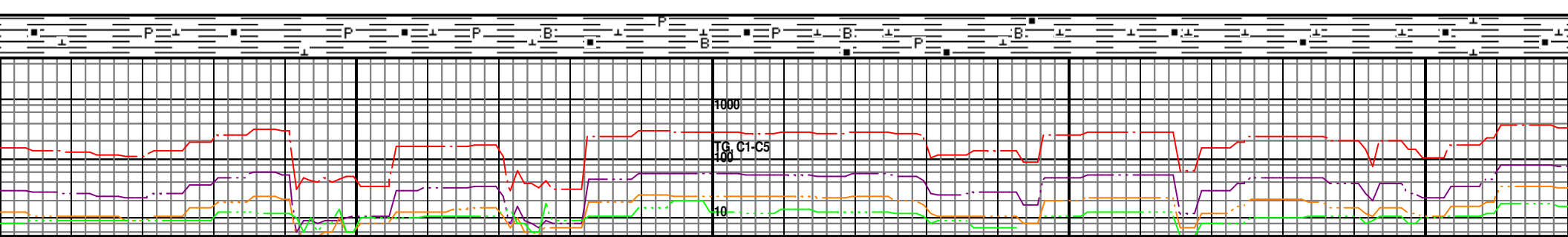
8900	8950	9000	9050	9100
SH- GY-LT GY, SME DK GY, BLKY-PLTY, SBWXY, CARB LAM, CALC FILLED FRACS, ABNT CALC FRAGS, V CALC-LMY, TR PYR, SFT-FRM. IN DRY CUTNGS, MOD MLKY CUT W/ SPOTTY RESD RING. NO STRMNG CUT.	SH- GY-LT GY, SME DK GY, BLKY-PLTY, SBWXY, CARB LAM, CALC FILLED FRACS, ABNT CALC FRAGS, V CALC-LMY, SFT-FRM.	SH- GY-DK GY, BLKY-PLTY, SBWXY, CARB LAM, CALC FILLED FRACS, ABNT CALC FRAGS, V CALC-LMY, TR PYR, SFT-FRM. IN DRY CUTNGS, EVEN MLKY CUT W/ WEAK RESD RING. NO STRMNG CUT.	7650 TVD POOR SAMPLE. MOSTLY BAROID SWEEP MATERIAL.	SH- GY-DK GY, BLKY-PLTY, SBWXY, CARB LAM, CALC FILLED FRACS, ABNT CALC FRAGS, V CALC-LMY, TR PYR, SFT-FRM. IN DRY CUTNGS, WEAK MLKY CUT W/ WEAK RESD RING. NO STRMNG CUT.
12/01/2012				
8888 MD 89.44 INC 270.18 AZM 7680.12 TVD 1481.1 VS	8920 MD 89.57 INC 269.25 AZM 7680.40 TVD 1513.1 VS	8951 MD 89.57 INC 269.50 AZM 7680.63 TVD 1544.1 VS	8983 MD 89.75 INC 270.21 AZM 7680.82 TVD 1576.1 VS	9015 MD 89.51 INC 271.33 AZM 7681.03 TVD 1608.1 VS
MUD WT. 9.3 IN, 9.3 OUT VIS. 43 IN, 40 OUT		WOB. 7.4-8.8K RPM. 64-66 PP. 2963-2993 SPM. 60 GPM. 271	PUMP BAROID SWEEP	
7700				

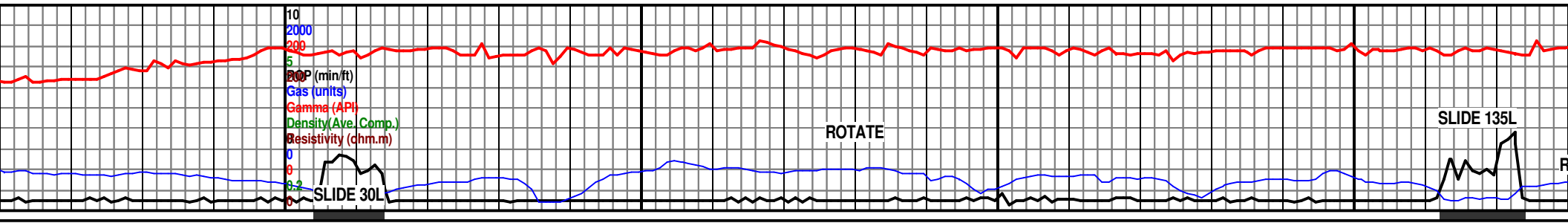
TARGET LINES BASED ON A 89.40 (0.60°) DIP.



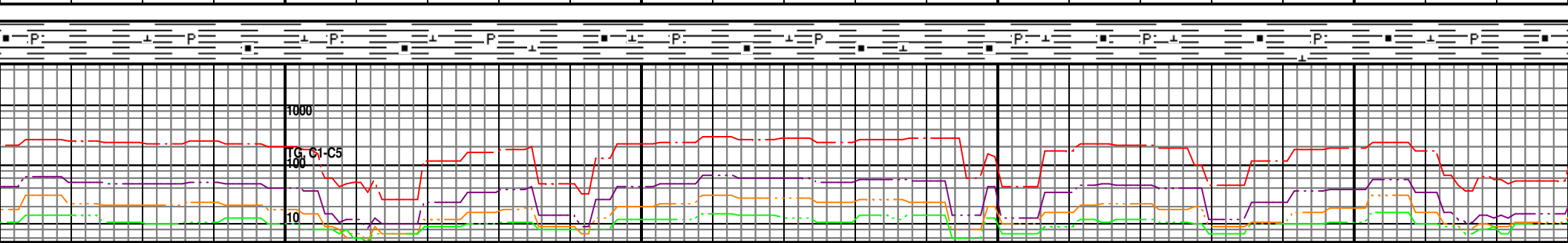


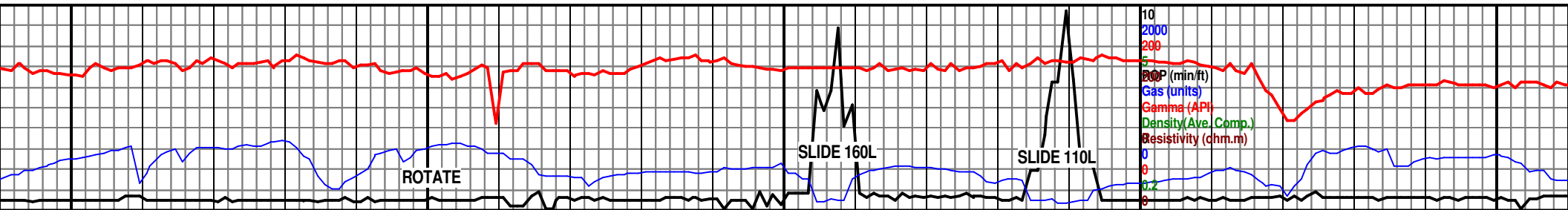
00	9150	9200	9250	9300		
SBWXY, ACS, LMY, VEN RING.	SH- GY-DK GY, BLKY-PLTY, SBWXY, CARB LAM, CALC FILLED FRACS, ABNT CALC FRACS, V CALC-LMY, TR PYR SFT-FRM. IN DRY CUTNGS, MOD MLKY CUT W SPOTTY RESD RING. NO STRMNG CUT.	SH- GY-DK GY, SME LT GY, BLKY-PLTY, SBWXY, CARB LAM, CALC FILLED FRACS, ABNT CALC FRACS, V CALC-LMY, TR PYR SFT-FRM	SH- GY-LT GY, OCC DK GY, BLKY-PLTY, SBWXY, ABNDT CALC FRAC & FRAG, V CALC-LMY, CHK, TR PYR, SME CARB LAM, SFT-FRM, MLKY CUT WHEN DRY. W/ BENT-WH-CRM.	SH- GY-LT GY, DK GY, BLKY-PLTY, SBWXY, CARB LAM, DECR CALC FRAC, V CALC-LMY, DECR BENT, SFT-FRM. MLKY CUT WHEN DRY.	SH- GY-LT GY, DK GY, BLKY-PLTY, SBWXY, CARB LAM, DECR CALC FRAC, V CALC-LMY, DECR BENT, SFT-FRM. MLKY CUT WHEN DRY.	SH- GY-DK C INCR CARB CALC-LMY, DRY.
		MUD WT. 9.3 IN, 9.3 OUT VIS. 42 IN, 41 OUT				TARGET L A 89.40 °(0
9110 MD 87.10 INC 270.70 AZM 7684.36 TVD 1703.1 VS		9173 MD 88.70 INC 270.10 AZM 7686.67 TVD 1766.0 VS	7650 TVD 9204 MD 88.76 INC 270.01 AZM 7687.36 TVD 1797.0 VS	9236 MD 89.32 INC 270.33 AZM 7687.89 TVD 1829.0 VS	9268 MD 90.19 INC 270.95 AZM 7688.03 TVD 1861.0 VS	9299 MD 90.12 INC 270.73 AZM 7687.95 TVD 1892.0 VS
WT. 9.3, VIS. 42, PV. 13, YP. 15, WL. 4.1, FC. 2/32, CORR SLDS. 6.2, pH. 8.0, Cl. 2050, LGS/HGS. 4.9/1.3%. w/ 3% lub.						
			7700			





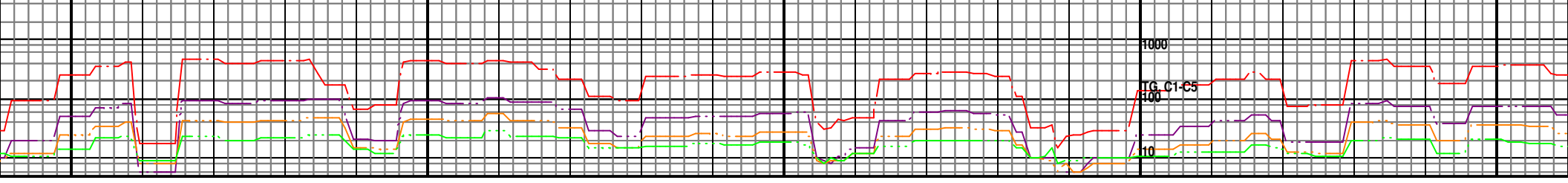
<p>10 2000 200 5 BOP (min/ft) Gas (units) Gamma (API) Density (Ave. Comp.) Resistivity (ohm.m)</p>											
<p>ROTATE</p>											
<p>SLIDE 30L</p>											
<p>SLIDE 135L</p>											
<p>9800 9850 9900 9950</p>											
<p>7675 TVD</p>											
<p>TARGET LINES BASED ON A 89.40°(0.60°) DIP.</p>											
<p>9774 MD 88.58 INC 269.28 AZM 7697.42 TVD 2366.8 VS</p>		<p>9837 MD 89.57 INC 268.67 AZM 7698.44 TVD 2429.7 VS</p>		<p>9869 MD 89.88 INC 268.93 AZM 7698.59 TVD 2461.7 VS</p>		<p>9900 MD 90.06 INC 269.12 AZM 7698.61 TVD 2492.7 VS</p>		<p>9932 MD 90.49 INC 269.41 AZM 7698.45 TVD 2524.7 VS</p>		<p>9964 MD 89.63 INC 268.86 AZM 7698.42 TVD 2556.7 VS</p>	
<p>7700</p>											
<p>WOB. 5 RPM. 5 PP. 324 SPM. 6 GPM. 2</p>											
<p>SH- GY-DK GY, SME LT GY, BLKY-PLTY, SBWXY, CARB LAM, V CALC, CALC FRAGS, CALC FILLED FRACS, TR PYR. IN DRY CUTNGS, EVEN MLKY CUT W/ SOLID RESD RING. NO STRMNG CUT.</p>											
<p>SH- GY-DK GY, SME LT GY, BLKY-PLTY, SBWXY, CARB LAM, V CALC, CALC FRAGS, CALC FILLED FRACS, TR PYR. IN DRY CUTNGS, EVEN MLKY CUT W/ SPOTTY RESD RING. NO STRMNG CUT.</p>											
<p>SH- GY-DK GY, SME LT GY, BLKY-PLTY, SBWXY, CARB LAM, V CALC, CALC FRAGS, CALC FILLED FRACS, TR PYR. IN DRY CUTNGS, EVEN MLKY CUT W/ SPOTTY RESD RING. NO STRMNG CUT.</p>											
<p>SH- GY-DK GY, SME LT GY, BLKY-PLTY, SBWXY, CARB LAM, V CALC, CALC FRAGS, CALC FILLED FRACS, TR PYR. IN DRY CUTNGS, EVEN MLKY CUT W/ POOR RESD RING. NO STRMNG CUT.</p>											
<p>SH- GY-DK GY, SME LT GY, BLKY-PLTY, SBWXY, CARB LAM, V CALC, CALC FRAGS, CALC FILLED FRACS, TR PYR. IN DRY CUTNGS, EVEN MLKY CUT W/ POOR RESD RING. NO STRMNG CUT.</p>											
<p>7725</p>											

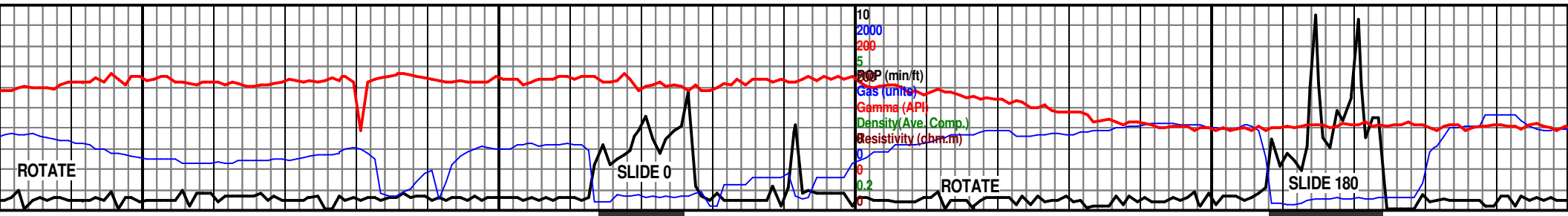




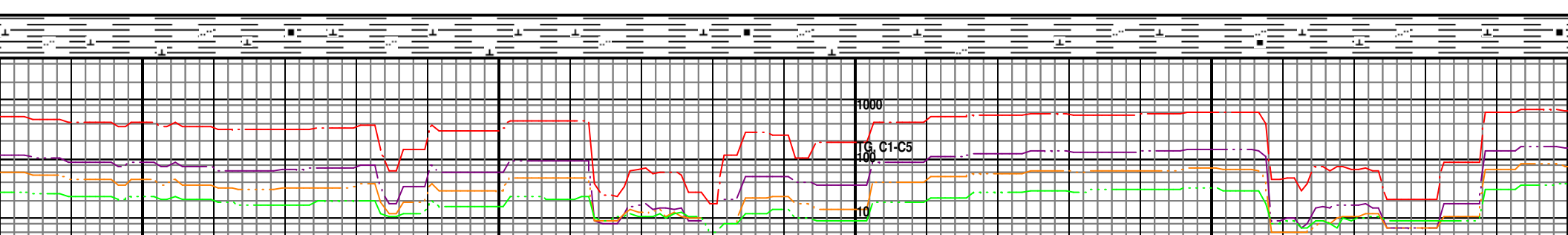
10650 10700 10750 10800 10850

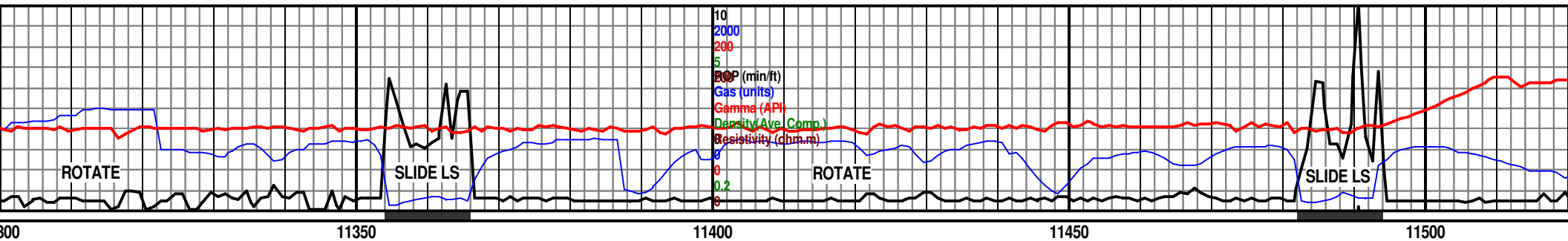
12/03/2012						7675 TVD	WT. 9. FC. 2/ 2600,
10660 MD 91.85 INC 271.22 AZM 7694.29 TVD 3252.3 VS	10691 MD 91.98 INC 271.27 AZM 7693.25 TVD 3283.3 VS	10723 MD 92.35 INC 271.41 AZM 7692.04 TVD 3315.2 VS	WOB. 7.2-8.5K RPM. 50 PP. 3397-3428 SPM. 60 GPM. 270	10754 MD 91.54 INC 270.95 AZM 7690.99 TVD 3346.2 VS	10818 MD 91.18 INC 270.28 AZM 7689.47 TVD 3410.2 VS	TARGET LINES BASE A 89.40°(0.60°) DIP.	
MUD WT. 9.3 IN, 9.2H OUT VIS. 45 IN, 47 OUT			PUMP 15 BBLs LUBE SWEEP				
Y-GY, BLKY-PLTY, SBWXY, M, V CALC, SME CALC FILLED CALC FRACS, TR PYR, SL SFT-FRM. IN DRY CUTNGS, KY CUT W/ SPOTTY RESD STRMNG CUT.	SH - LT GY-GY, BLKY-PLTY, SBWXY, CARB LAM, V CALC, SME CALC FILLED FRACS, CALC FRACS, TR PYR, SL SLTY, SFT-FRM. IN DRY CUTNGS, EVEN MLKY CUT W/ SPOTTY RESD RING. SME STRMNG.	SH - LT GY-GY, BLKY-PLTY, SBWXY, CARB LAM, V CALC, SME CALC FILLED FRACS, CALC FRACS, TR PYR, SL SLTY, SFT-FRM. IN DRY CUTNGS, EVEN MLKY CUT W/ SPOTTY RESD RING. NO STRMNG CUT.	SH - LT GY-GY, BLKY-PLTY, SBWXY, CARB LAM, V CALC, SME CALC FILLED FRACS, CALC FRACS, TR PYR, SL SLTY, SFT-FRM. IN DRY CUTNGS, EVEN MLKY CUT W/ SPOTTY RESD RING. NO STRMNG CUT.	SH - LT GY-GY, BLKY-PLTY, SBWXY, CARB LAM, V CALC, SME CALC FILLED FRACS, CALC FRACS, TR PYR, SL SLTY, SFT-FRM. IN DRY CUTNGS, EVEN MLKY CUT W/ SPOTTY RESD RING. NO STRMNG CUT. W/ TR BENT-WH.	SH - LT GY-DK GY, BLKY-PLTY SBWXY, CARB LAM, V CALC, CALC FILLED FRACS, SME CA FRACS, TR PYR, SL SLTY, SF DRY CUTNGS, EVEN MLKY C SPOTTY RESD RING. NO STRP		
						7700	
						7725	



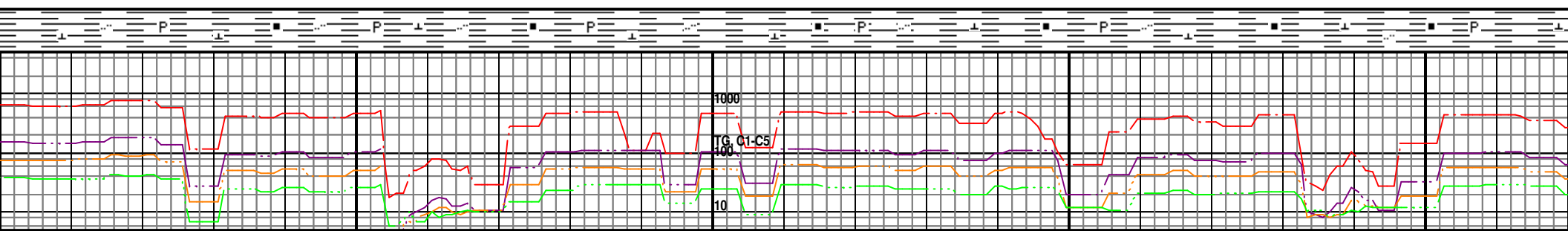


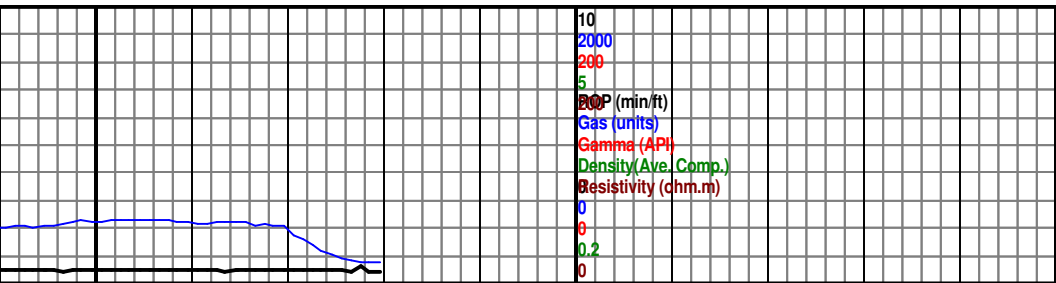
11100	11150	11200	11250	11300
7675 TVD				
<p>TARGET LINES BASED ON A 89.40°(0.60°) DIP.</p>				
11102 MD 89.88 INC 269.76 AZM 7686.96 TVD 3694.2 VS	WOB. 8-10K 25-35K SLIDE RPM. 60 PP. 3030 SPM. 60 GPM. 270 MUD WT. 9.3 IN, 9.3 OUT VIS. 46 IN, 46 OUT	11197 MD 91.73 INC 270.12 AZM 7685.63 TVD 3789.2 VS	7700	11292 MD 90.43 INC 270.21 AZM 7683.84 TVD 3884.1 VS
SH- LT GY-GY, BLKY-PLTY, OCC SLTY, V CALC-LMY, V LTL CARB, NO CALC FRAG OR FRAC, FRM. SLO MLKY CUT WHEN DRY.	SH- LT GY-GY, BLKY-PLTY, OCC SLTY, V CALC-LMY, V LTL CARB, NO CALC FRAG OR FRAC, FRM. SLO MLKY CUT WHEN DRY.	SH- GY-LT GY, BLKY-PLTY, V CALC-LMY, MARL, SLTY IN PT, V LTL CARB, SFT-FRM. SLO MLKY CUT WHEN DRY.	7725	SH- GY-LT GY, BLKY-PLTY, V CALC-LMY, MARL, SLTY IN PT, V LTL CARB, SFT-FRM. SLO MLKY CUT WHEN DRY.
SH- GY-LT GY, SME DK GY, BLKY-PLTY, SBWXY, V CALC-LMY, MARL, SLTY IN PT, V LTL CARB, SFT-FRM. IN DRY CUTNGS, EVEN MLKY CUT W/ SPOTT RESD RING. NO STRMNG CUT.				





11300	11350	11400	11450	11500
		7675 TVD		
				PUMP 15 BBLS LUBE SWEEP
			WOB. 9-12K 24-35K SLIDE RPM. 60 PP. 3070 SPM. 60 GPM. 270	
11324 MD 90.74 INC 270.23 AZM 7683.51 TVD 3916.1 VS		11387 MD 89.75 INC 269.48 AZM 7683.24 TVD 3979.1 VS	11419 MD 90.12 INC 269.81 AZM 7683.28 TVD 4011.1 VS	11482 MD 89.69 INC 270.04 AZM 7683.38 TVD 4074.1 VS
		7700	MUD WT. 9.3 IN, 9.2H OUT VIS. 47 IN, 45 OUT	11514 MD 89.32 INC 269.97 AZM 7683.66 TVD 4106.1 VS
SH- GY-LT GY, SME DK GY, BLKY-PLTY, SBWXY, V CALC-LMY, MARL, SLTY IN PT, V LTL CARB, OCC CALC FRAG, TR PYR, SFT-FRM. IN DRY CUTNGS, EVEN MLKY CUT W/ SPOTTY RESD RING. NO STRMNG CUT.	SH- GY-LT GY, SME DK GY, BLKY-PLTY, SBWXY, V CALC-LMY, MARL, SLTY IN PT, V LTL CARB, OCC CALC FRAG, TR PYR, SFT-FRM. IN DRY CUTNGS, EVEN MLKY CUT W/ SPOTTY RESD RING. NO STRMNG CUT.	SH- GY-LT GY, SME DK GY, BLKY-PLTY, SBWXY, V CALC-LMY, MARL, SLTY IN PT, V LTL CARB, OCC CALC FRAG, TR PYR, SFT-FRM. IN DRY CUTNGS, EVEN MLKY CUT W/ SPOTTY RESD RING. NO STRMNG CUT.	SH- GY-LT GY, SME DK GY, BLKY-PLTY, SBWXY, V CALC-LMY, MARL, SLTY IN PT, V LTL CARB, OCC CALC FRAG, TR PYR, SFT-FRM. IN DRY CUTNGS, EVEN MLKY CUT W/ SPOTTY RESD RING. NO STRMNG CUT.	SH- GY-LT GY, SME DK GY, BLKY-PLTY, SBWXY, V CALC-LMY, MARL, SLTY IN PT, V LTL CARB, OCC CALC FRAG, TR PYR, SFT-FRM. IN DRY CUTNGS, EVEN MLKY CUT W/ SPOTTY RESD RING. NO STRMNG CUT.
		7725		





11750	11800	11850
GY-DK GY, SME LT GY, BLKY-PLTY, KY, V CALC-LMY, SLTY IN PT, CARB, CALC FRAG, TR PYR, SFT-FRM. W/ EP MATERIAL. IN DRY CUTNGS, EVEN CUT W/ SPOTTY RESD RING. NO ING CUT.		
		7675 TVD
PROJECTION TO BIT SURVEY 11780 MD 89.20 INC 270.22 AZM 7687.52 TVD 4372.1 VS		7700
TD AT 11,780 FT. ON 12/4/2012 AT 0221 HRS. DRILLERS DEPTH		
7725		

