

F:/Projects/013-1080/Figures/gis/.mxd

|                   |  |
|-------------------|--|
| PROJECT: 013-0180 |  |
| DRAWN BY: HD      |  |
| DATE: March, 2013 |  |

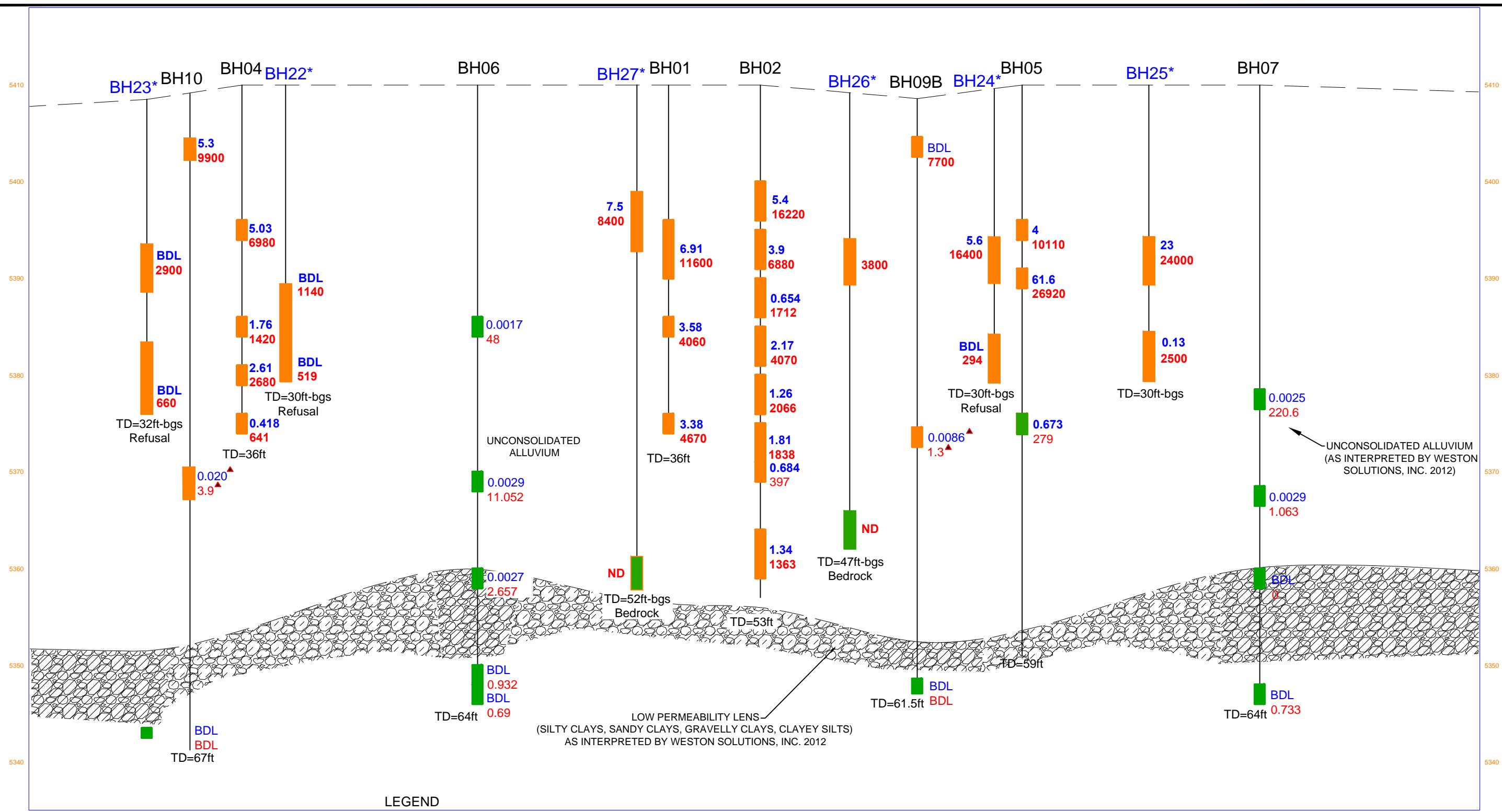
Soil Boring and Monitoring Well Locations  
Clough RMV 216-21  
WXP Energy Rocky Mountain, LLC

**OLSSON**  
ASSOCIATES

1111 Lincoln Mall, Suite 111  
P.O. Box 84608  
Lincoln, NE 68501-4608

TEL 402.474.6311  
FAX 402.474.5160  
www.oaconsulting.com

FIGURE  
**1**



**LEGEND**

GROUND SURFACE

BH32 ← BOREHOLE NAME

25 ← BENZENE VALUE (mg/kg)

1200 ← TPH VALUE (mg/kg)

ABOVE COGCC CONC. LEVELS

BELOW COGCC CONC. LEVELS

TD=34 ft ← TOTAL DEPTH OF BOREHOLE

mg/L = milligrams per liter  
SPLP = Synthetic Precipitation Leaching Procedure  
mg/kg = milligrams per kilogram  
BDL = Below Detection Limit  
N/A = Not Available  
**Bold** = Value exceeds Standard  
\* = February 2013 Borings

▲ BH09B (34-36) and (60-61.5) are SPLP results in mg/L  
▲ BH10 (39-40.5) and (65-66) are SPLP results in mg/L

COGCC Table 910-1 Concentration Levels  
Benzene = 0.17 mg/kg  
TPH = 500 mg/kg

PROJECT: 013-0180  
DRAWN BY: sds  
DATE: 04.09.2013

CROSS SECTION WITH 2013 BORINGS  
RMV 216-21  
WPX ENERGY

**OLSSON ASSOCIATES**  
4690 TABLE MOUNTAIN DRIVE  
SUITE 200  
GOLDEN, CO 80403  
TEL 303.237.2072  
FAX 303.237.2659

D:\WPX\013-0180\WPX Clough RMV 216-21\Report\OA Figures\Fig 4-Parachute - X-Sections.dwg  
DATE: Apr 26, 2013 10:49am XREFS: