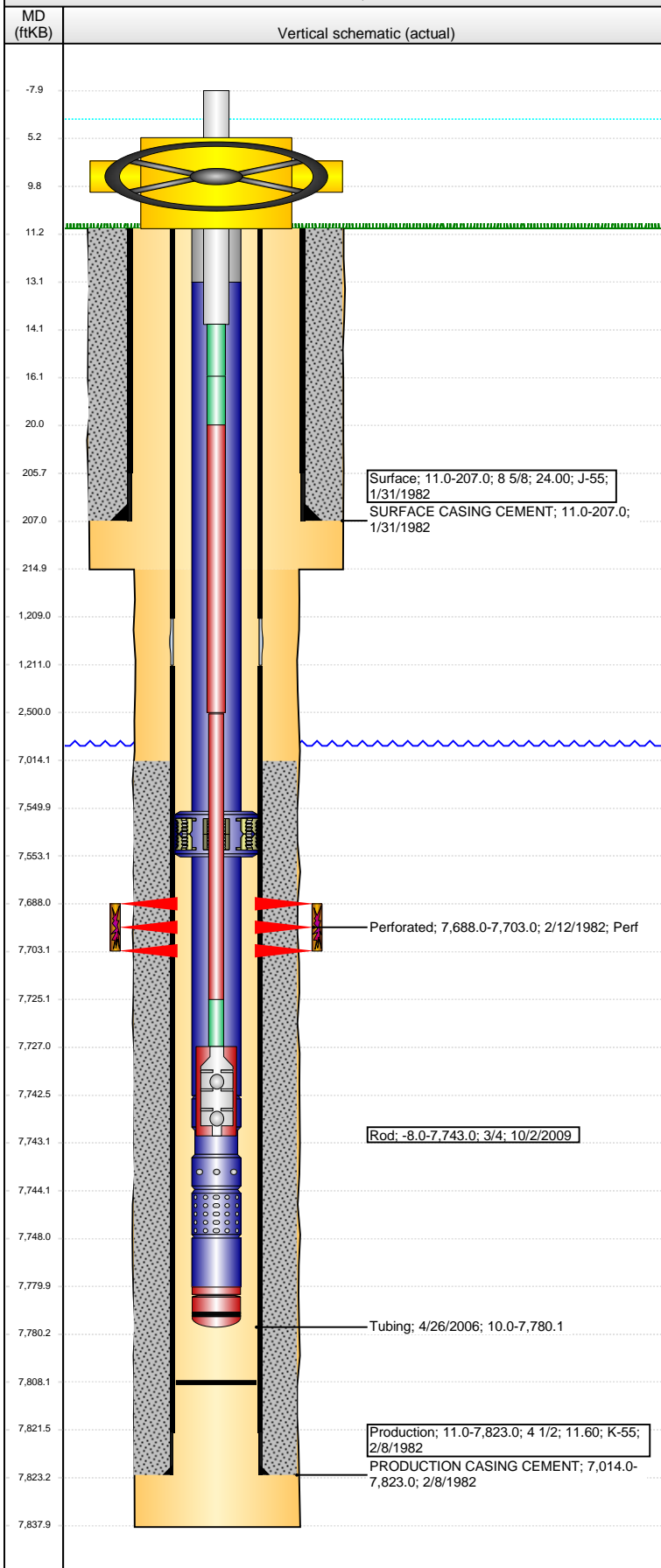


Well Name: DOLORES 44-28

VERTICAL - ORIGINAL HOLE, 4/7/2014 10:08:43 AM



Well Header

API 05-123-10546	Business Unit WATTENBERG	District 15	Well Config VERTICAL
Original KB Elevation (ft) 5,447.00	KB - GL / MSL (ftKB) 11.00	Spud Date 1/31/1982	P & A Date

Comment

Sliding Sleeve @ 1209'. SEAT NIPPLE @7744' MUD ANCHOR 7780.13'

Directions To Well

WCR'S 4 & 55, WEST 1/8, NORTH INTO.

Congressional Location

Quarter 1	Quarter 2	Quarter 3	Quarter 4	Section	Township	Twnshp N...	Range	Rng E/W Dir
		SE	SE	28	1	N	64	W

Bottom Hole Location

North-South Distance (ft)	From N or S Line	East-West Distance (ft)	From E or W Line

Plug Back Total Depths

Date	Depth (ftKB)	Method	Com
2/8/1982	7,808.0	TAG	

Wellbore Sections

Section Des	Size (in)	Act Top, MD (ftKB)	Act Btm, MD (ftKB)
SURFACE	12 1/4	11.0	215.0
PRODUCTION	7 7/8	215.0	7,838.0

Zone Statuses

Zone Name	Status Date	Status	Job
D SAND	2/19/1982	PR	DRILLING - ORIGINAL, 1/31/1982 00:00

Casing Strings

Surface, 207.0ftKB

Casing Description	Run Date	OD (in)	Wt/Len (l...)	Grade	Top, MD (ft...)	MD (ftKB)
Surface	1/31/1982	8 5/8	24.00	J-55	11.0	207.0

Production, 7,823.0ftKB

Casing Description	Run Date	OD (in)	Wt/Len (l...)	Grade	Top, MD (ft...)	MD (ftKB)
Production	2/8/1982	4 1/2	11.60	K-55	11.0	7,823.0

Cement

Description	Top Depth (ftKB)	Bottom Depth (ftKB)
SURFACE CASING CEMENT	11.0	207.0
PRODUCTION CASING CEMENT	7,014.0	7,823.0

Tubing Components

Item Des	OD (in)	Wt (lb/ft)	Grade	Jts	Len (ft)	Btm (ftKB)	Btm (TVD) (ftKB)
Stretch Correction	2 3/8	4.70	J-55		3.06	13.1	
Tubing	2 3/8	4.70	J-55	239	7,536.97	7,550.0	
Anchor/catcher	4	4.70	J-55	1	3.10	7,553.1	
Tubing	2 3/8	4.70	J-55	6	189.30	7,742.4	
Pump Seating Nipple	2 3/8	4.70	N-80	1	1.60	7,744.0	
Perforated Joint	2 3/8	4.70	J-55	1	4.00	7,748.0	
Tubing	2 3/8	4.70	J-55	1	31.70	7,779.7	
Bull Plug	2 3/8	4.70	N-80	1	0.40	7,780.1	

Rods & Pumps

Rod Description	Run Date	Set Depth (ftKB)
Rod	10/2/2009	7,743.0

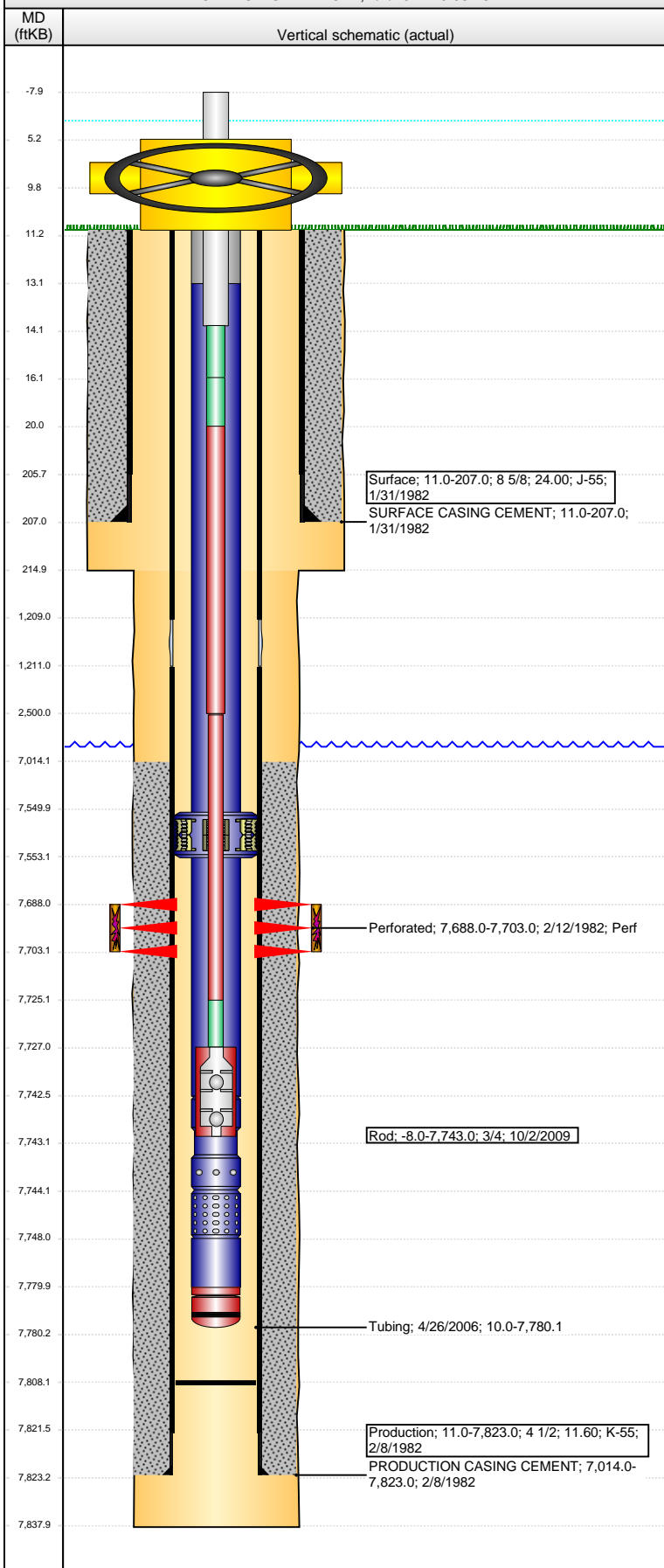
Comment

Item Description	OD Nominal (in)	Joints	Length (ft)
Polished Rod	1 1/4	1	22.00
Item Description	OD Nominal (in)	Joints	Length (ft)
Pony Rod	7/8	1	2.00
Item Description	OD Nominal (in)	Joints	Length (ft)
Pony Rod	7/8	1	4.00
Item Description	OD Nominal (in)	Joints	Length (ft)
Sucker Rod	7/8	99	2,480.00
Item Description	OD Nominal (in)	Joints	Length (ft)
Sucker Rod	3/4	209	5,225.00
Item Description	OD Nominal (in)	Joints	Length (ft)
Pony Rod	3/4	1	2.00
Item Description	OD Nominal (in)	Joints	Length (ft)
Rod Insert Pump	2	1	16.00

API Pump Type	Barrel Length (ft)	Seating Assembly Type
R	12.00	C

Well Name: DOLORES 44-28

VERTICAL - ORIGINAL HOLE, 4/7/2014 10:08:46 AM



Perforation Data

Zone	Brnch/St g	Entered Shot Total	Top (ftKB)	Btm (ftKB)	Date
D SAND, ORIGINAL HOLE		48	7,688.00	7,703.00	2/12/1982

Stimulations & Treatments

Date	Zone	Primary Job Type
2/12/1982	D SAND, ORIGINAL HOLE	DRILLING - ORIGINAL
Technical Result	Tech Result Details	Tech Result Note

Comment

Other In Hole

Run Date	Des	OD (in)	Top (ftKB)	Btm (ftKB)

Logs

Date	Type	Top, MD (ftKB)	Btm, MD (ftKB)
2/7/1982	COMPENSATED DENSITY	4,677.0	7,838.0
2/7/1982	INDUCTION	212.0	7,832.0
2/10/1982	CBL/CCL/GR	6,900.0	7,810.0