

1801 Broadway  
Suite 500  
Denver, Colorado 80202



Callie Fiddes  
Regulatory Technician  
Tel: 303.398.0550  
E-mail: cfiddes@gwogco.com

March 31, 2014

Colorado Oil and Gas Conservation Commission  
1120 Lincoln Street, Suite 801  
Denver, Colorado 80203

RE: **Proposed Wellbore Spacing Unit**  
Teakwood EF 33-229HN

Niobrara New Drill  
Township 6 North, Range 65 West, 6<sup>th</sup> P.M.  
Section 4  
Weld County, Colorado

Dear Director:

Great Western Operating Company, LLC is planning to drill the above captioned well in accordance with the provisions of COGCC Rule 318(l)e(2).

Great Western proposed wellbore spacing unit consists of:

- **E2SW Sec 33, 7N-65W & E2NW Sec 4, 6N-65W**

The 30 day notification time has passed and we have not received any objections to such well locations or proposed spacing unit, therefore Great Western hereby requests the Director to approve the above mentioned well. Great Western Operating Company, LLC respectfully requests that the COGCC review the enclosed map illustrating the proposed wellbore spacing unit.

Respectfully,

*Callie Fiddes*

Callie Fiddes  
Regulatory Technician  
Great Western Operating Company, LLC

T6N, R65W, 6th. P.M.

# GREAT WESTERN OIL & GAS COMPANY

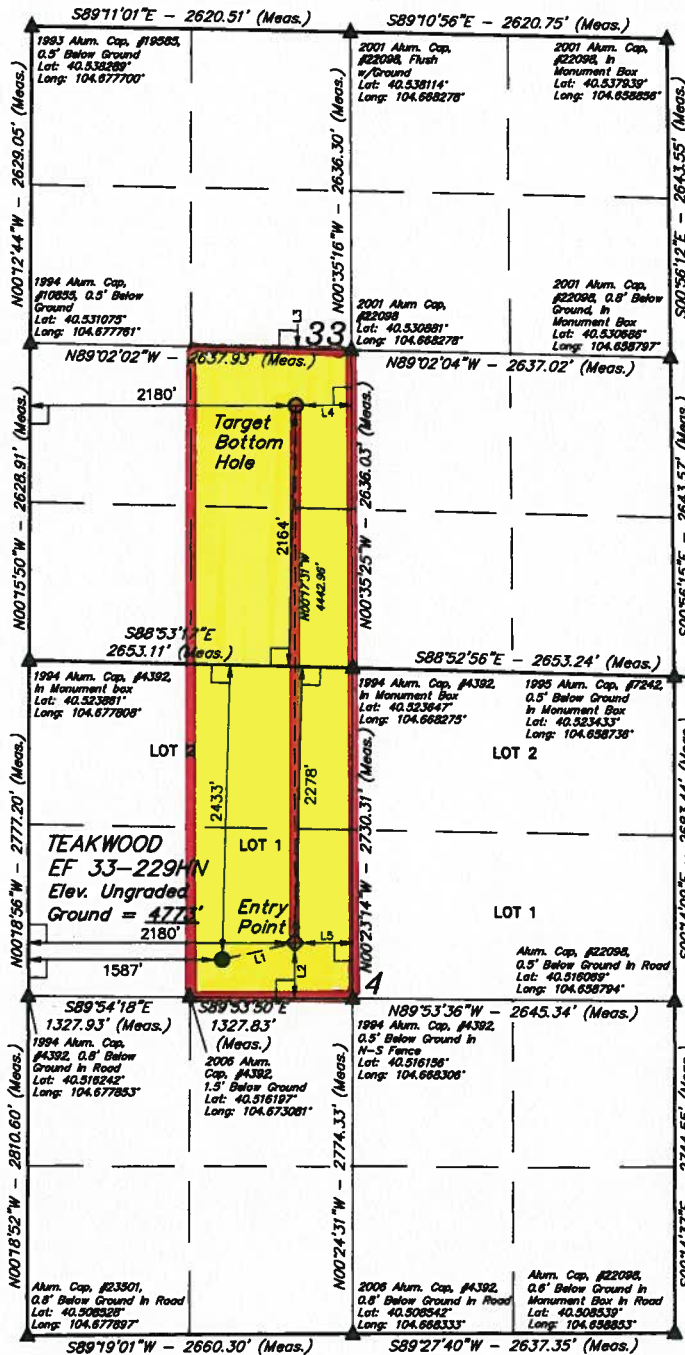
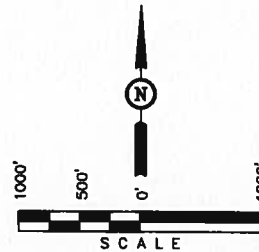
Well location, TEAKWOOD EF 33-229HN, located as shown in LOT 1 of Section 4, T6N, R65W, 6th. P.M., Weld County, Colorado.

## BASIS OF ELEVATION

USGS COOPERATIVE BASE NETWORK CONTROL STATION, DESIGNATION "VERMILYEA". NGS DATA SHEET LISTS THE NAVD 88 ELEVATION AS BEING 5026 FEET.

## BASIS OF BEARINGS

BASIS OF BEARINGS IS A G.P.S. OBSERVATION.



## LEGEND:

- └ = 90° SYMBOL
- = PROPOSED WELL HEAD.
- ◇ = PROPOSED ENTRY POINT.
- = PROPOSED TARGET BOTTOM HOLE.
- ▲ = SECTION CORNERS LOCATED.

## LINE TABLE

LINE	DIRECTION	LENGTH
L1	N78°21'57"E	608.22'
L2	S00°06'10"W	460.00'
L3	N00°57'56"E	470.00'
L4	N89°24'36"E	460.00'
L5	N89°36'46"E	475.11'

## CERTIFICATE

THIS IS TO CERTIFY THAT THE ABOVE WAS PREPARED FROM FIELD NOTES OF ACTUAL SURVEY MADE BY ME OR UNDER MY SUPERVISION AND THAT THE SAME ARE TRUE AND CORRECT TO THE BEST OF MY KNOWLEDGE AND BELIEF.

REVISED: 03-28-14 J.W.  
REVISED: 02-14-14 J.W.  
REVISED: 02-12-14 J.W.

REGISTERED LAND SURVEYOR  
REGISTRATION NO. 28288  
STATE OF COLORADO  
03-28-14

UNTAH ENGINEERING & LAND SURVEYING  
85 SOUTH 200 EAST - VERNAL, UTAH 84078  
(435) 789-1017

PDOP = 1.4

SCALE 1" = 1000'  
DATE SURVEYED: 12-03-13  
DATE DRAWN: 12-16-13

<p>MON 15 (TARGET BOTTOM HOLE)</p> <p>Latitude = 40°31'48.85" (40.528825) Longitude = 104°40'11.75" (104.669931)</p>	<p>MON 16 (ENTRY POINT)</p> <p>Latitude = 40°31'42.78" (40.517433) Longitude = 104°40'12.03" (104.670006)</p>	<p>MON 17 (SURFACE LOCATION)</p> <p>Latitude = 40°31'01.40" (40.517056) Longitude = 104°40'18.71" (104.672142)</p>	<p>REFERENCES</p> <p>G.L.O. PLAT</p>
<p>MON 18 (TARGET BOTTOM HOLE)</p> <p>Latitude = 40°31'48.72" (40.528844) Longitude = 104°40'09.85" (104.669411)</p>	<p>MON 19 (ENTRY POINT)</p> <p>Latitude = 40°31'02.83" (40.517483) Longitude = 104°40'10.18" (104.669489)</p>	<p>MON 20 (SURFACE LOCATION)</p> <p>Latitude = 40°31'01.40" (40.517056) Longitude = 104°40'17.84" (104.671822)</p>	<p>FILE</p> <p>GREAT WESTERN OIL &amp; GAS COMPANY</p>