

Mineral Resources Inc

Well Name: **DT-Forbes 5-5-6**

Surface Location: DT-Habitat Pad Sec.5-T5N-R65W

North American Datum 1983 , US State Plane 1983 , Colorado Northern Zone

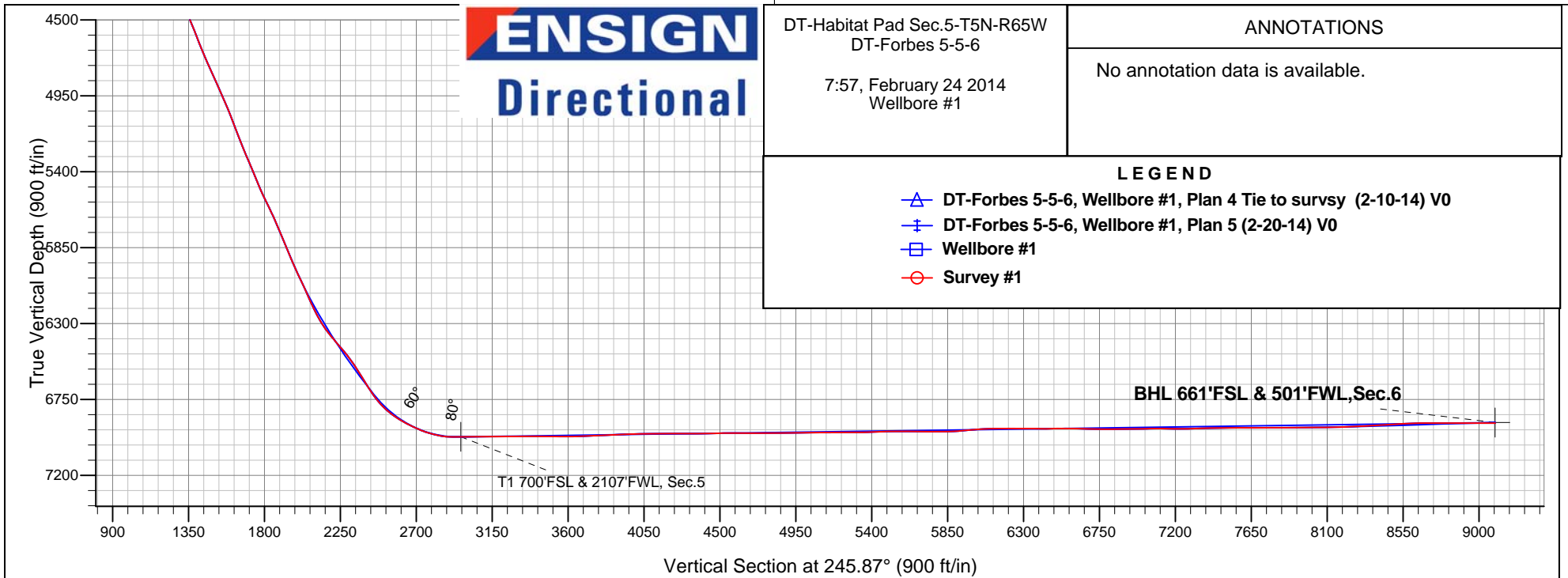
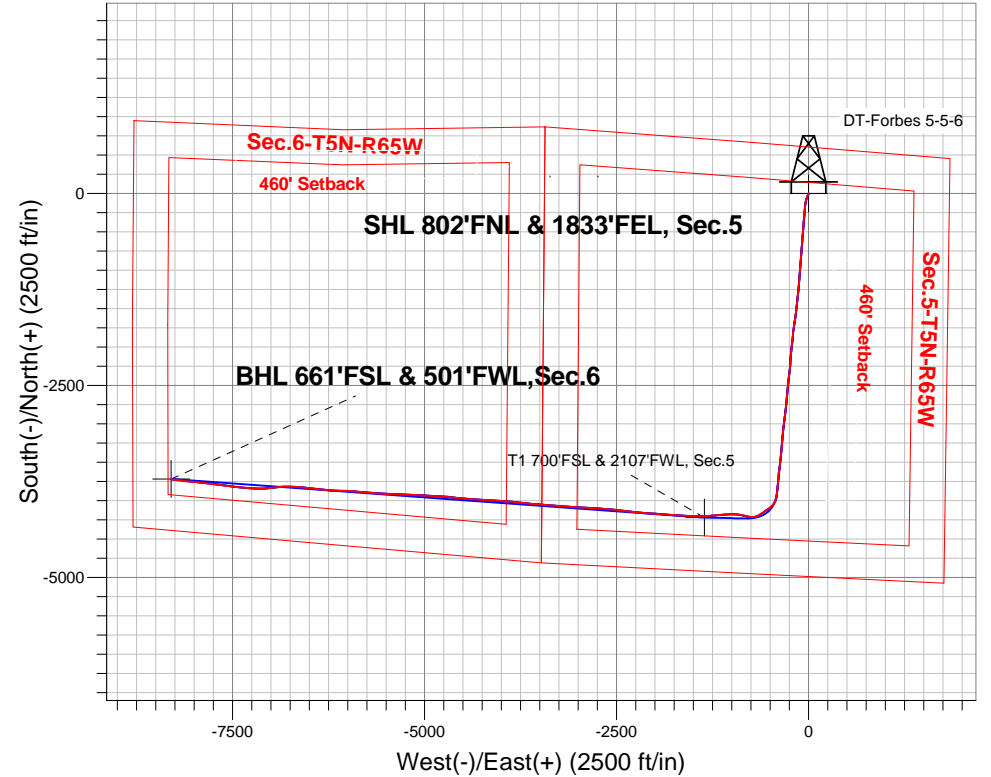
Ground Elevation: 4640.0

+N/-S	+E/-W	Northing	Easting	Latitude	Longitude	Slot
0.0	0.0	1402307.86	3227066.41	40.434870	-104.684280	
RKB - 22' WELL @ 4662.0ft (RKB - 22')						

FINAL SURVEY

Projected Bottom Hole Location

15870'MD 6891'TVD 3720'S & 8301'W of SHL
89.9 degree Incl @ 277.4 degree AZM





Mineral Resources Inc

SEC.5-T5N-R65W

DT-Habitat Pad Sec.5-T5N-R65W

DT-Forbes 5-5-6

Wellbore #1

Survey: Survey #1

Standard Survey Report

24 February, 2014

Company:	Mineral Resources Inc	Local Co-ordinate Reference:	Well DT-Forbes 5-5-6
Project:	SEC.5-T5N-R65W	TVD Reference:	WELL @ 4662.0ft (RKB - 22')
Site:	DT-Habitat Pad Sec.5-T5N-R65W	MD Reference:	WELL @ 4662.0ft (RKB - 22')
Well:	DT-Forbes 5-5-6	North Reference:	True
Wellbore:	Wellbore #1	Survey Calculation Method:	Minimum Curvature
Design:	Wellbore #1	Database:	Landmark

Survey

Measured Depth (ft)	Inclination (°)	Azimuth (°)	Vertical Depth (ft)	+N/-S (ft)	+E/-W (ft)	Vertical Section (ft)	Dogleg Rate (°/100ft)	Build Rate (°/100ft)	Turn Rate (°/100ft)
1,122.0	16.70	190.60	1,110.3	-115.3	-40.6	84.2	2.42	2.05	-4.82
1,218.0	19.20	187.60	1,201.7	-144.5	-45.2	100.3	2.78	2.60	-3.13
1,309.0	20.80	186.20	1,287.2	-175.4	-48.9	116.3	1.84	1.76	-1.54
1,400.0	22.60	183.60	1,371.7	-209.0	-51.7	132.6	2.24	1.98	-2.86
1,491.0	23.60	183.90	1,455.4	-244.6	-54.1	149.3	1.11	1.10	0.33
1,584.0	24.30	183.20	1,540.4	-282.3	-56.4	166.9	0.81	0.75	-0.75
1,674.0	25.30	184.40	1,622.1	-319.9	-58.9	184.6	1.24	1.11	1.33
1,764.0	27.10	185.70	1,702.9	-359.5	-62.4	203.9	2.10	2.00	1.44
1,858.0	29.10	186.40	1,785.8	-403.5	-67.1	226.2	2.16	2.13	0.74
1,948.0	31.00	183.70	1,863.7	-448.4	-71.1	248.1	2.59	2.11	-3.00
2,040.0	33.70	183.20	1,941.4	-497.5	-74.0	270.9	2.95	2.93	-0.54
2,132.0	35.50	184.30	2,017.1	-549.7	-77.4	295.4	2.07	1.96	1.20
2,224.0	37.70	185.00	2,091.0	-604.3	-81.9	321.8	2.43	2.39	0.76
2,315.0	39.80	184.30	2,161.9	-661.1	-86.5	349.2	2.36	2.31	-0.77
2,406.0	41.80	184.30	2,230.8	-720.4	-91.0	377.5	2.20	2.20	0.00
2,498.0	42.70	184.80	2,298.9	-782.1	-95.9	407.2	1.04	0.98	0.54
2,589.0	43.40	184.40	2,365.4	-844.0	-100.8	437.0	0.83	0.77	-0.44
2,684.0	43.80	185.10	2,434.2	-909.3	-106.3	468.7	0.66	0.42	0.74
2,780.0	43.40	184.30	2,503.7	-975.2	-111.7	500.6	0.71	-0.42	-0.83
2,875.0	43.00	184.30	2,573.0	-1,040.1	-116.6	531.5	0.42	-0.42	0.00
2,970.0	43.40	184.80	2,642.2	-1,104.9	-121.7	562.8	0.55	0.42	0.53
3,066.0	43.20	185.10	2,712.1	-1,170.5	-127.4	594.8	0.30	-0.21	0.31
3,161.0	43.60	185.00	2,781.1	-1,235.5	-133.2	626.6	0.43	0.42	-0.11
3,256.0	40.40	183.70	2,851.7	-1,298.9	-138.0	656.9	3.49	-3.37	-1.37
3,351.0	39.90	186.00	2,924.3	-1,359.9	-143.2	686.6	1.65	-0.53	2.42
3,447.0	39.50	186.20	2,998.2	-1,420.9	-149.7	717.4	0.44	-0.42	0.21
3,542.0	37.80	185.70	3,072.4	-1,479.9	-155.8	747.2	1.82	-1.79	-0.53
3,637.0	36.40	187.40	3,148.2	-1,536.8	-162.4	776.4	1.83	-1.47	1.79
3,733.0	36.10	188.10	3,225.6	-1,593.1	-170.0	806.4	0.53	-0.31	0.73
3,828.0	36.70	188.70	3,302.0	-1,648.9	-178.3	836.7	0.73	0.63	0.63
3,923.0	37.40	189.90	3,377.9	-1,705.3	-187.5	868.2	1.06	0.74	1.26
4,019.0	39.70	187.10	3,452.9	-1,764.5	-196.3	900.4	3.01	2.40	-2.92
4,114.0	40.60	185.70	3,525.6	-1,825.4	-203.1	931.5	1.34	0.95	-1.47
4,209.0	39.50	184.10	3,598.3	-1,886.3	-208.4	961.2	1.59	-1.16	-1.68
4,305.0	41.30	187.60	3,671.4	-1,948.1	-214.7	992.3	3.02	1.88	3.65
4,401.0	45.00	187.80	3,741.4	-2,013.2	-223.5	1,026.9	3.86	3.85	0.21
4,496.0	46.80	184.10	3,807.5	-2,081.0	-230.6	1,061.1	3.38	1.89	-3.89
4,591.0	45.30	182.90	3,873.5	-2,149.3	-234.8	1,092.8	1.82	-1.58	-1.26
4,686.0	42.90	183.90	3,941.7	-2,215.3	-238.7	1,123.4	2.63	-2.53	1.05
4,782.0	38.90	185.10	4,014.2	-2,277.9	-243.6	1,153.4	4.25	-4.17	1.25
4,877.0	38.50	187.40	4,088.4	-2,337.0	-250.0	1,183.5	1.57	-0.42	2.42
4,973.0	41.10	188.10	4,162.1	-2,397.8	-258.3	1,215.9	2.75	2.71	0.73
5,068.0	40.40	185.50	4,234.1	-2,459.4	-265.7	1,247.8	1.93	-0.74	-2.74
5,164.0	39.70	185.50	4,307.6	-2,520.9	-271.6	1,278.3	0.73	-0.73	0.00
5,259.0	40.70	186.20	4,380.2	-2,581.9	-277.9	1,309.0	1.16	1.05	0.74
5,354.0	40.70	185.10	4,452.2	-2,643.5	-284.0	1,339.7	0.76	0.00	-1.16
5,450.0	39.40	184.10	4,525.7	-2,705.1	-288.9	1,369.4	1.51	-1.35	-1.04
5,543.0	37.90	185.70	4,598.3	-2,763.0	-293.9	1,397.6	1.94	-1.61	1.72
5,639.0	39.00	186.70	4,673.5	-2,822.3	-300.3	1,427.8	1.32	1.15	1.04
5,735.0	39.90	187.80	4,747.6	-2,882.8	-308.0	1,459.5	1.19	0.94	1.15
5,830.0	40.00	187.40	4,820.4	-2,943.3	-316.1	1,491.6	0.29	0.11	-0.42
5,925.0	41.20	187.10	4,892.6	-3,004.6	-323.9	1,523.8	1.28	1.26	-0.32
6,020.0	41.70	185.30	4,963.8	-3,067.1	-330.7	1,555.5	1.36	0.53	-1.89
6,115.0	40.10	184.80	5,035.6	-3,129.1	-336.2	1,585.9	1.72	-1.68	-0.53

Company:	Mineral Resources Inc	Local Co-ordinate Reference:	Well DT-Forbes 5-5-6
Project:	SEC.5-T5N-R65W	TVD Reference:	WELL @ 4662.0ft (RKB - 22')
Site:	DT-Habitat Pad Sec.5-T5N-R65W	MD Reference:	WELL @ 4662.0ft (RKB - 22')
Well:	DT-Forbes 5-5-6	North Reference:	True
Wellbore:	Wellbore #1	Survey Calculation Method:	Minimum Curvature
Design:	Wellbore #1	Database:	Landmark

Survey

Measured Depth (ft)	Inclination (°)	Azimuth (°)	Vertical Depth (ft)	+N/-S (ft)	+E/-W (ft)	Vertical Section (ft)	Dogleg Rate (°/100ft)	Build Rate (°/100ft)	Turn Rate (°/100ft)
6,210.0	38.30	185.00	5,109.2	-3,188.9	-341.3	1,615.0	1.90	-1.89	0.21
6,305.0	37.70	185.50	5,184.1	-3,247.1	-346.6	1,643.7	0.71	-0.63	0.53
6,401.0	39.00	185.80	5,259.3	-3,306.4	-352.5	1,673.3	1.37	1.35	0.31
6,496.0	41.20	186.00	5,332.0	-3,367.3	-358.8	1,703.9	2.32	2.32	0.21
6,592.0	40.70	183.90	5,404.5	-3,430.0	-364.2	1,734.5	1.53	-0.52	-2.19
6,687.0	40.40	185.00	5,476.7	-3,491.5	-369.0	1,764.0	0.82	-0.32	1.16
6,782.0	41.90	187.80	5,548.2	-3,553.6	-376.0	1,795.8	2.50	1.58	2.95
6,877.0	43.40	187.80	5,618.1	-3,617.4	-384.7	1,829.8	1.58	1.58	0.00
6,973.0	41.90	185.00	5,688.7	-3,682.0	-392.0	1,862.9	2.52	-1.56	-2.92
7,068.0	40.50	184.60	5,760.2	-3,744.4	-397.2	1,893.1	1.50	-1.47	-0.42
7,164.0	39.90	185.80	5,833.5	-3,806.1	-402.9	1,923.5	1.02	-0.63	1.25
7,260.0	40.20	186.20	5,907.0	-3,867.5	-409.3	1,954.5	0.41	0.31	0.42
7,328.0	39.70	186.40	5,959.1	-3,910.9	-414.1	1,976.6	0.76	-0.74	0.29
7,376.0	40.00	188.50	5,996.0	-3,941.4	-418.1	1,992.7	2.87	0.63	4.38
7,423.0	38.50	194.10	6,032.4	-3,970.6	-423.9	2,009.9	8.18	-3.19	11.91
7,471.0	34.00	200.60	6,071.1	-3,997.6	-432.3	2,028.6	12.32	-9.38	13.54
7,518.0	29.60	207.80	6,111.1	-4,020.2	-442.3	2,047.0	12.35	-9.36	15.32
7,567.0	27.40	213.40	6,154.1	-4,040.3	-454.2	2,066.1	7.06	-4.49	11.43
7,614.0	26.90	220.50	6,196.0	-4,057.5	-467.0	2,084.8	6.97	-1.06	15.11
7,662.0	28.00	226.30	6,238.6	-4,073.5	-482.2	2,105.2	6.02	2.29	12.08
7,709.0	31.20	230.70	6,279.4	-4,088.8	-499.6	2,127.4	8.23	6.81	9.36
7,757.0	35.80	235.10	6,319.4	-4,104.8	-520.8	2,153.2	10.83	9.58	9.17
7,804.0	38.30	236.60	6,357.0	-4,120.6	-544.2	2,181.1	5.66	5.32	3.19
7,853.0	39.10	236.60	6,395.2	-4,137.5	-569.8	2,211.3	1.63	1.63	0.00
7,900.0	41.00	234.20	6,431.2	-4,154.7	-594.7	2,241.0	5.21	4.04	-5.11
7,948.0	41.30	234.70	6,467.3	-4,173.1	-620.4	2,272.0	0.93	0.63	1.04
7,995.0	38.50	240.50	6,503.4	-4,189.2	-645.8	2,301.8	9.90	-5.96	12.34
8,044.0	33.90	248.10	6,542.9	-4,201.8	-671.8	2,330.7	13.10	-9.39	15.51
8,091.0	32.40	256.90	6,582.3	-4,209.6	-696.2	2,356.1	10.72	-3.19	18.72
8,139.0	32.70	266.70	6,622.8	-4,213.3	-721.7	2,380.9	10.99	0.63	20.42
8,186.0	34.70	274.30	6,661.9	-4,213.0	-747.7	2,404.5	9.92	4.26	16.17
8,234.0	38.40	278.80	6,700.5	-4,209.7	-776.1	2,429.1	9.51	7.71	9.38
8,281.0	43.40	282.70	6,736.0	-4,203.9	-806.3	2,454.3	11.94	10.64	8.30
8,330.0	47.40	284.60	6,770.4	-4,195.6	-840.2	2,481.8	8.62	8.16	3.88
8,377.0	52.00	282.00	6,800.8	-4,187.4	-875.1	2,510.3	10.66	9.79	-5.53
8,425.0	56.10	275.80	6,829.0	-4,181.5	-913.4	2,542.9	13.50	8.54	-12.92
8,472.0	60.00	273.60	6,853.9	-4,178.2	-953.1	2,577.8	9.20	8.30	-4.68
8,520.0	62.20	271.30	6,877.0	-4,176.4	-995.1	2,615.4	6.21	4.58	-4.79
8,567.0	64.20	267.40	6,898.2	-4,176.9	-1,037.1	2,653.9	8.54	4.26	-8.30
8,616.0	66.00	265.10	6,918.9	-4,179.8	-1,081.4	2,695.5	5.62	3.67	-4.69
8,663.0	70.20	264.90	6,936.4	-4,183.6	-1,124.8	2,736.7	8.94	8.94	-0.43
8,711.0	74.60	265.80	6,950.9	-4,187.3	-1,170.4	2,779.8	9.34	9.17	1.88
8,758.0	77.70	264.60	6,962.2	-4,191.2	-1,215.9	2,822.9	7.05	6.60	-2.55
8,807.0	84.20	264.20	6,969.9	-4,195.9	-1,264.0	2,868.7	13.29	13.27	-0.82
8,835.0	87.90	265.60	6,971.8	-4,198.4	-1,291.8	2,895.1	14.12	13.21	5.00
8,902.1	90.68	267.91	6,972.6	-4,202.2	-1,358.8	2,957.8	5.39	4.14	3.45
T1 700'FSL & 2107'FWL, Sec.5									
8,922.0	91.50	268.60	6,972.3	-4,202.8	-1,378.7	2,976.2	5.39	4.14	3.45
9,015.0	89.70	271.10	6,971.3	-4,203.0	-1,471.7	3,061.2	3.31	-1.94	2.69
9,106.0	91.10	271.60	6,970.6	-4,200.9	-1,562.7	3,143.3	1.63	1.54	0.55
9,198.0	90.40	273.70	6,969.4	-4,196.6	-1,654.5	3,225.5	2.41	-0.76	2.28
9,291.0	90.00	273.90	6,969.1	-4,190.5	-1,747.3	3,307.6	0.48	-0.43	0.22
9,383.0	90.30	275.80	6,968.9	-4,182.7	-1,839.0	3,388.1	2.09	0.33	2.07
9,475.0	89.80	275.80	6,968.8	-4,173.4	-1,930.5	3,467.8	0.54	-0.54	0.00

Company:	Mineral Resources Inc	Local Co-ordinate Reference:	Well DT-Forbes 5-5-6
Project:	SEC.5-T5N-R65W	TVD Reference:	WELL @ 4662.0ft (RKB - 22')
Site:	DT-Habitat Pad Sec.5-T5N-R65W	MD Reference:	WELL @ 4662.0ft (RKB - 22')
Well:	DT-Forbes 5-5-6	North Reference:	True
Wellbore:	Wellbore #1	Survey Calculation Method:	Minimum Curvature
Design:	Wellbore #1	Database:	Landmark

Survey

Measured Depth (ft)	Inclination (°)	Azimuth (°)	Vertical Depth (ft)	+N/-S (ft)	+E/-W (ft)	Vertical Section (ft)	Dogleg Rate (°/100ft)	Build Rate (°/100ft)	Turn Rate (°/100ft)
9,567.0	88.80	271.60	6,969.9	-4,167.4	-2,022.3	3,549.2	4.69	-1.09	-4.57
9,659.0	91.50	274.80	6,969.7	-4,162.3	-2,114.2	3,630.9	4.55	2.93	3.48
9,751.0	91.60	275.10	6,967.2	-4,154.4	-2,205.8	3,711.3	0.34	0.11	0.33
9,843.0	92.20	276.40	6,964.1	-4,145.2	-2,297.3	3,791.0	1.56	0.65	1.41
9,934.0	92.90	276.20	6,960.1	-4,135.2	-2,387.6	3,869.4	0.80	0.77	-0.22
10,026.0	91.60	275.80	6,956.5	-4,125.6	-2,479.0	3,948.9	1.48	-1.41	-0.43
10,118.0	90.80	276.20	6,954.6	-4,116.0	-2,570.5	4,028.4	0.97	-0.87	0.43
10,209.0	90.50	274.40	6,953.5	-4,107.6	-2,661.1	4,107.7	2.01	-0.33	-1.98
10,301.0	89.80	273.90	6,953.3	-4,100.9	-2,752.9	4,188.7	0.94	-0.76	-0.54
10,392.0	90.50	274.10	6,953.0	-4,094.5	-2,843.7	4,269.0	0.80	0.77	0.22
10,487.0	89.70	273.00	6,952.9	-4,088.7	-2,938.5	4,353.1	1.43	-0.84	-1.16
10,581.0	91.50	272.90	6,951.9	-4,083.8	-3,032.3	4,436.8	1.92	1.91	-0.11
10,676.0	90.60	272.70	6,950.1	-4,079.2	-3,127.2	4,521.5	0.97	-0.95	-0.21
10,771.0	89.20	275.00	6,950.3	-4,072.8	-3,222.0	4,605.3	2.83	-1.47	2.42
10,866.0	90.10	274.80	6,950.9	-4,064.7	-3,316.6	4,688.4	0.97	0.95	-0.21
10,960.0	90.80	274.40	6,950.2	-4,057.2	-3,410.3	4,770.8	0.86	0.74	-0.43
11,055.0	90.20	274.10	6,949.3	-4,050.1	-3,505.1	4,854.4	0.71	-0.63	-0.32
11,150.0	90.70	276.20	6,948.6	-4,041.6	-3,599.7	4,937.3	2.27	0.53	2.21
11,244.0	91.30	276.00	6,946.9	-4,031.6	-3,693.1	5,018.5	0.67	0.64	-0.21
11,339.0	89.10	276.20	6,946.6	-4,021.5	-3,787.6	5,100.6	2.33	-2.32	0.21
11,433.0	91.40	274.40	6,946.2	-4,012.8	-3,881.2	5,182.4	3.11	2.45	-1.91
11,528.0	89.10	273.40	6,945.8	-4,006.4	-3,975.9	5,266.3	2.64	-2.42	-1.05
11,623.0	91.20	275.00	6,945.5	-3,999.4	-4,070.7	5,349.9	2.78	2.21	1.68
11,717.0	93.00	271.60	6,942.1	-3,994.0	-4,164.4	5,433.2	4.09	1.91	-3.62
11,812.0	89.30	273.60	6,940.2	-3,989.7	-4,259.3	5,518.1	4.43	-3.89	2.11
11,906.0	90.00	273.70	6,940.8	-3,983.7	-4,353.1	5,601.2	0.75	0.74	0.11
12,001.0	90.00	275.00	6,940.8	-3,976.5	-4,447.8	5,684.7	1.37	0.00	1.37
12,096.0	89.50	276.90	6,941.2	-3,966.7	-4,542.3	5,766.9	2.07	-0.53	2.00
12,190.0	90.90	276.20	6,940.8	-3,955.9	-4,635.7	5,847.8	1.67	1.49	-0.74
12,285.0	94.80	273.00	6,936.1	-3,948.3	-4,730.2	5,931.0	5.31	4.11	-3.37
12,379.0	94.10	273.90	6,928.8	-3,942.7	-4,823.8	6,014.0	1.21	-0.74	0.96
12,474.0	91.30	273.00	6,924.4	-3,937.0	-4,918.5	6,098.1	3.10	-2.95	-0.95
12,568.0	90.10	272.30	6,923.2	-3,932.6	-5,012.4	6,182.0	1.48	-1.28	-0.74
12,663.0	90.20	272.70	6,923.0	-3,928.5	-5,107.3	6,267.0	0.43	0.11	0.42
12,758.0	89.50	272.30	6,923.2	-3,924.3	-5,202.2	6,351.9	0.85	-0.74	-0.42
12,852.0	89.80	273.00	6,923.8	-3,920.0	-5,296.1	6,435.8	0.81	0.32	0.74
12,947.0	91.00	272.70	6,923.1	-3,915.3	-5,391.0	6,520.5	1.30	1.26	-0.32
13,041.0	88.60	272.20	6,923.4	-3,911.3	-5,484.9	6,604.5	2.61	-2.55	-0.53
13,136.0	89.00	273.70	6,925.4	-3,906.4	-5,579.7	6,689.1	1.63	0.42	1.58
13,230.0	89.60	273.70	6,926.6	-3,900.3	-5,673.5	6,772.2	0.64	0.64	0.00
13,325.0	90.90	275.70	6,926.2	-3,892.5	-5,768.2	6,855.4	2.51	1.37	2.11
13,419.0	90.70	276.00	6,924.9	-3,882.9	-5,861.7	6,936.8	0.38	-0.21	0.32
13,514.0	90.50	272.70	6,923.9	-3,875.7	-5,956.4	7,020.3	3.48	-0.21	-3.47
13,609.0	89.80	270.70	6,923.6	-3,872.9	-6,051.4	7,105.8	2.23	-0.74	-2.11
13,703.0	89.50	272.30	6,924.2	-3,870.5	-6,145.3	7,190.6	1.73	-0.32	1.70
13,798.0	90.60	275.50	6,924.1	-3,864.0	-6,240.1	7,274.4	3.56	1.16	3.37
13,893.0	92.10	276.20	6,921.9	-3,854.3	-6,334.6	7,356.7	1.74	1.58	0.74
13,987.0	90.50	275.30	6,919.7	-3,844.9	-6,428.1	7,438.2	1.95	-1.70	-0.96
14,082.0	90.50	276.70	6,918.9	-3,835.0	-6,522.5	7,520.3	1.47	0.00	1.47
14,177.0	90.00	275.30	6,918.5	-3,825.0	-6,617.0	7,602.5	1.56	-0.53	-1.47
14,271.0	90.20	272.50	6,918.3	-3,818.6	-6,710.8	7,685.5	2.99	0.21	-2.98
14,366.0	90.10	269.20	6,918.1	-3,817.2	-6,805.8	7,771.6	3.48	-0.11	-3.47
14,460.0	90.20	264.90	6,917.8	-3,822.1	-6,899.6	7,859.2	4.58	0.11	-4.57
14,555.0	91.00	262.30	6,916.8	-3,832.7	-6,994.0	7,949.7	2.86	0.84	-2.74

Company:	Mineral Resources Inc	Local Co-ordinate Reference:	Well DT-Forbes 5-5-6
Project:	SEC.5-T5N-R65W	TVD Reference:	WELL @ 4662.0ft (RKB - 22')
Site:	DT-Habitat Pad Sec.5-T5N-R65W	MD Reference:	WELL @ 4662.0ft (RKB - 22')
Well:	DT-Forbes 5-5-6	North Reference:	True
Wellbore:	Wellbore #1	Survey Calculation Method:	Minimum Curvature
Design:	Wellbore #1	Database:	Landmark

Survey

Measured Depth (ft)	Inclination (°)	Azimuth (°)	Vertical Depth (ft)	+N/-S (ft)	+E/-W (ft)	Vertical Section (ft)	Dogleg Rate (°/100ft)	Build Rate (°/100ft)	Turn Rate (°/100ft)
14,649.0	90.40	266.00	6,915.7	-3,842.2	-7,087.5	8,038.9	3.99	-0.64	3.94
14,744.0	90.70	272.00	6,914.8	-3,843.9	-7,182.4	8,126.2	6.32	0.32	6.32
14,838.0	91.40	275.50	6,913.0	-3,837.8	-7,276.2	8,209.3	3.80	0.74	3.72
14,933.0	92.50	275.80	6,909.8	-3,828.4	-7,370.7	8,291.7	1.20	1.16	0.32
15,028.0	93.40	276.50	6,904.9	-3,818.2	-7,465.0	8,373.6	1.20	0.95	0.74
15,122.0	92.20	277.10	6,900.3	-3,807.1	-7,558.2	8,454.2	1.43	-1.28	0.64
15,217.0	93.50	276.50	6,895.6	-3,795.9	-7,652.5	8,535.6	1.51	1.37	-0.63
15,311.0	91.30	276.70	6,891.7	-3,785.1	-7,745.7	8,616.3	2.35	-2.34	0.21
15,406.0	90.00	276.90	6,890.6	-3,773.9	-7,840.1	8,697.8	1.38	-1.37	0.21
15,501.0	90.00	275.30	6,890.6	-3,763.8	-7,934.5	8,779.9	1.68	0.00	-1.68
15,595.0	90.00	275.10	6,890.6	-3,755.2	-8,028.1	8,861.8	0.21	0.00	-0.21
15,690.0	90.00	278.30	6,890.6	-3,744.2	-8,122.5	8,943.4	3.37	0.00	3.37
15,784.0	89.60	277.10	6,890.9	-3,731.6	-8,215.6	9,023.2	1.35	-0.43	-1.28
15,820.0	89.90	277.40	6,891.1	-3,727.0	-8,251.3	9,054.0	1.18	0.83	0.83
15,870.0	89.90	277.40	6,891.2	-3,720.6	-8,300.9	9,096.6	0.00	0.00	0.00
BHL 663'FSL & 500'FWL,Sec.6									

Checked By: _____ Approved By: _____ Date: _____