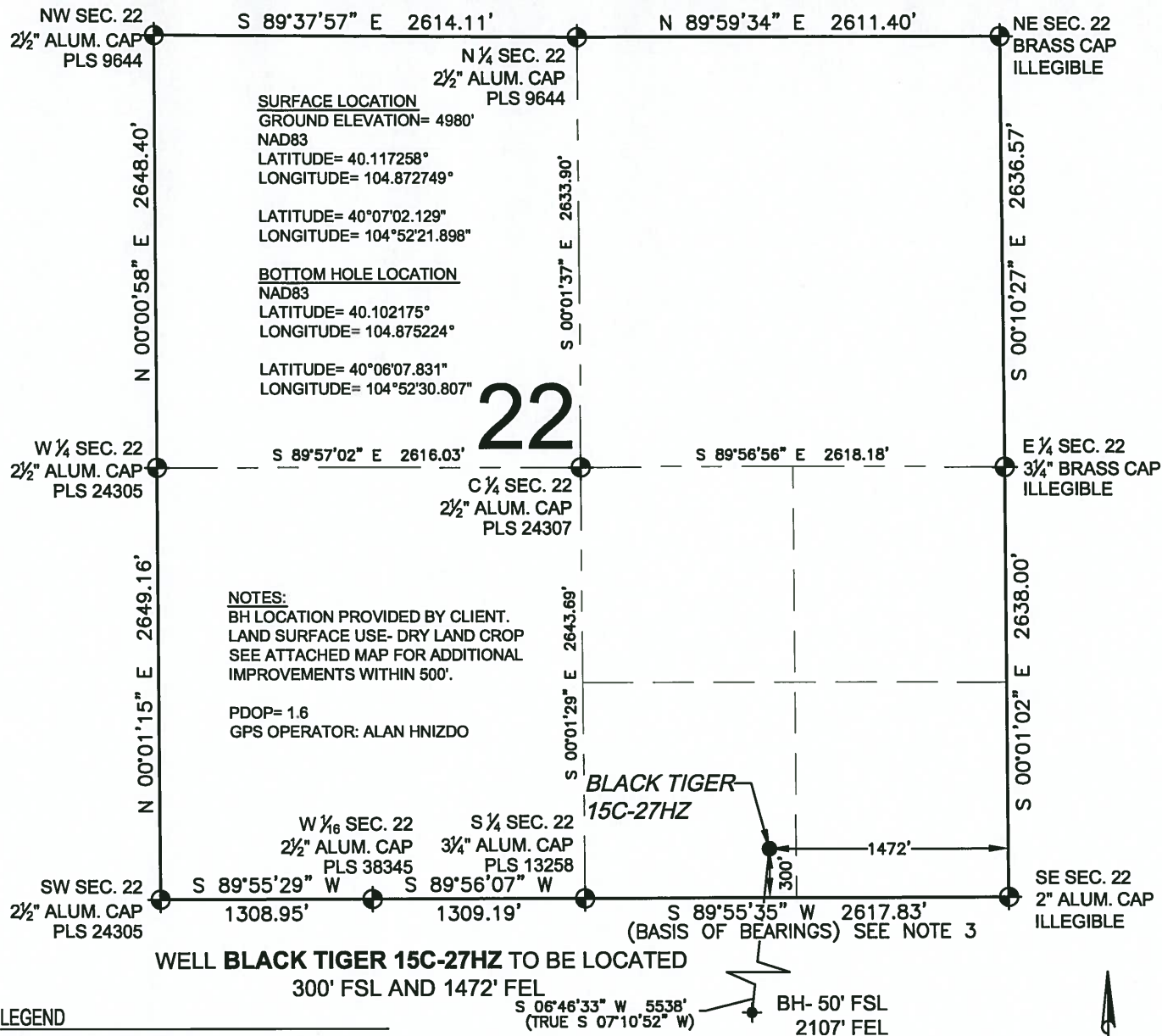


WELL LOCATION CERTIFICATE: BLACK TIGER 15C-27HZ

SECTION 22, TOWNSHIP 2 NORTH, RANGE 67 WEST, 6TH P.M.

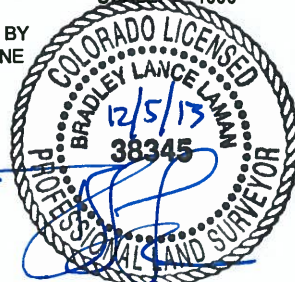


NOTES:

1. THIS FIELD SURVEY CONFORMS TO THE MINIMUM STANDARDS SET BY THE C.O.G.C.C., RULE NO. 215
2. HORIZONTAL POSITIONS AND ORTHOMETRIC ELEVATIONS SHOWN AT THE WELL HEAD, ARE BASED ON GPS-RTK POSITIONS DERIVED FROM MINIMUM 2-HOUR STATIC OBSERVATIONS CORRECTED BY THE NATIONAL GEODETIC SURVEY ONLINE POSITIONING USER SERVICE, O.P.U.S. DATUM: HORIZONTAL = NAD83/2011, VERTICAL = NAVD88
3. THE BASIS OF BEARINGS ARE STATE PLANE COORDINATE SYSTEM GRID BEARINGS SHOWN HEREON BETWEEN THE DESCRIBED MONUMENTS SHOWN HEREON.
4. GRID DISTANCES ARE SHOWN, AS MEASURED IN THE FIELD, WITH TIES TO WELLS MEASURED PERPENDICULAR TO SECTION LINES.

I, BRADLEY L. LAMAN, A LICENSED PROFESSIONAL LAND SURVEYOR IN THE STATE OF COLORADO DO HEREBY CERTIFY TO **KERR-MCGEE OIL & GAS ONSHORE LP**, THAT THE SURVEY AND WELL LOCATION CERTIFICATE SHOWN HEREON WERE DONE BY ME OR UNDER MY DIRECT SUPERVISION AND THAT THE DRAWING SHOWN HEREON ACCURATELY DEPICTS THE PROPOSED LOCATION OF THE WELL. THIS CERTIFICATE DOES NOT REPRESENT A LAND SURVEY PLAT OR IMPROVEMENT SURVEY PLAT AS DEFINED BY C.R.S. 38-51-102 AND CANNOT BE RELIED UPON TO DETERMINE OWNERSHIP.

BRADLEY L. LAMAN, PLS 38345
COLORADO LICENSED PROFESSIONAL LAND SURVEYOR
FOR AND ON BEHALF OF P.F.S., LLC



SHEET 1 OF 2



FIELD DATE:
08-13-13

DRAWING DATE:
11-27-13

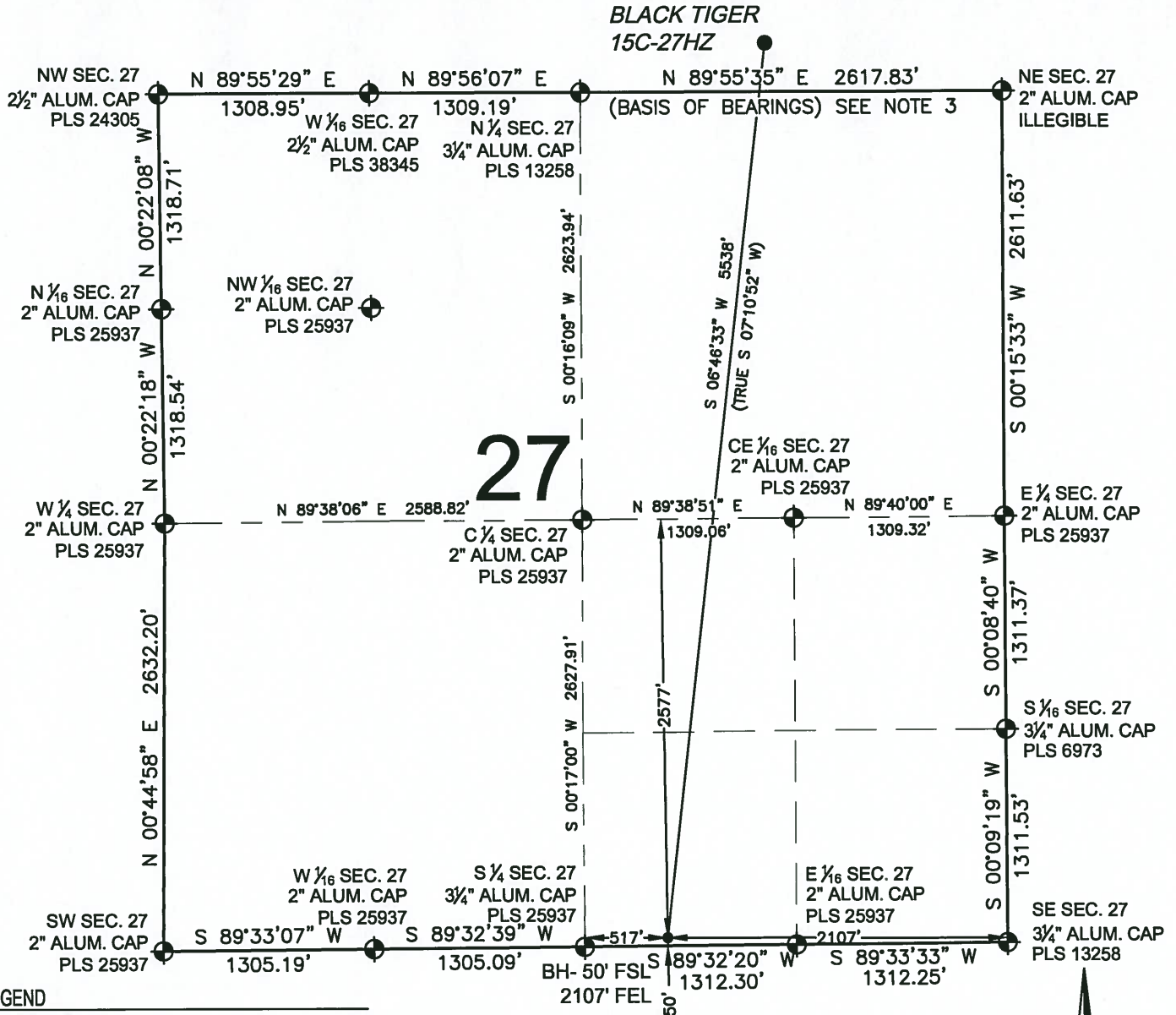
BY: KAD CHECKED: SNC

SURFACE LOCATION:
SW 1/4, SE 1/4,
SEC. 22, T2N, R67W, 6TH P.M.
WELD COUNTY, COLORADO

NOTICE: ACCORDING TO COLORADO LAW YOU MUST COMMENCE ANY LEGAL ACTION BASED UPON ANY DEFECT IN THIS SURVEY WITHIN THREE YEARS AFTER YOU FIRST DISCOVER SUCH DEFECT. IN NO EVENT MAY ANY ACTION BASED UPON ANY DEFECT IN THIS SURVEY BE COMMENCED MORE THAN TEN YEARS FROM THIS SAID DATE OF THIS CERTIFICATION SHOWN HEREON.

WELL LOCATION CERTIFICATE: BLACK TIGER 15C-27HZ

SECTION 27, TOWNSHIP 2 NORTH, RANGE 67 WEST, 6TH P.M.



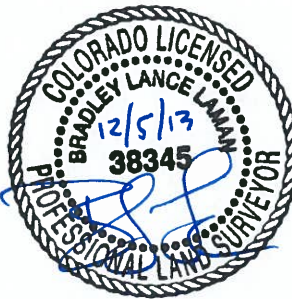
LEGEND

- ⊕ = EXISTING MONUMENT
- ⬮ = BOTTOM HOLE
- = PROPOSED WELL
- ◆ = EXISTING WELL
- BH = BOTTOM HOLE

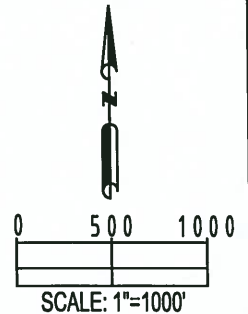
NOTES:

1. THIS FIELD SURVEY CONFORMS TO THE MINIMUM STANDARDS SET BY THE C.O.G.C.C., RULE NO. 215
2. HORIZONTAL POSITIONS AND ORTHOMETRIC ELEVATIONS SHOWN AT THE WELL HEAD, ARE BASED ON GPS-RTK POSITIONS DERIVED FROM MINIMUM 2-HOUR STATIC OBSERVATIONS CORRECTED BY THE NATIONAL GEODETIC SURVEY ONLINE POSITIONING USER SERVICE, O.P.U.S. DATUM: HORIZONTAL = NAD83/2011, VERTICAL = NAVD88
3. THE BASIS OF BEARINGS ARE STATE PLANE COORDINATE SYSTEM GRID BEARINGS SHOWN HEREON BETWEEN THE DESCRIBED MONUMENTS SHOWN HEREON.
4. GRID DISTANCES ARE SHOWN, AS MEASURED IN THE FIELD, WITH TIES TO WELLS MEASURED PERPENDICULAR TO SECTION LINES.

SHEET 2 OF 2



BRADLEY L. LAMAN, PLS 38345
COLORADO LICENSED PROFESSIONAL LAND SURVEYOR
FOR AND ON BEHALF OF P.F.S., LLC



FIELD DATE: 08-13-13	SURFACE LOCATION: SW 1/4, SE 1/4, SEC. 22, T2N, R67W, 6TH P.M.
DRAWING DATE: 11-27-13	WELD COUNTY, COLORADO
BY: KAD	CHECKED: SNC

NOTICE: ACCORDING TO COLORADO LAW YOU MUST COMMENCE ANY LEGAL ACTION BASED UPON ANY DEFECT IN THIS SURVEY WITHIN THREE YEARS AFTER YOU FIRST DISCOVER SUCH DEFECT. IN NO EVENT MAY ANY ACTION BASED UPON ANY DEFECT IN THIS SURVEY BE COMMENCED MORE THAN TEN YEARS FROM THIS SAID DATE OF THIS CERTIFICATION SHOWN HEREON.