

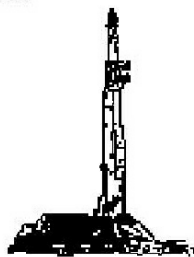
**GOOLSBY BROTHERS**  
and associates, inc.

575 Union Blvd, Suite 208  
Lakewood, CO 80228  
303-945-2860 Office



Geological Wellsite  
Supervision

[www.goolsbybrothers.com](http://www.goolsbybrothers.com)



Scale 1:240 (5"=100') Imperial  
Measured Depth Log

Well Name: DT-Habitat 5-5-6 (Curve Hole Section)

Location: Section 5, T5N, R65W, Weld County, CO.

License Number: API: 05-123-38291

Region: Wattenberg

Spud Date: November 26, 2013

Drilling Completed: November xx, 2013

Surface Coordinates: NENW Sec 5 T5N R65W; 363' FNL 1834' FEL  
Lat 40.435530 Long -104.684270

Bottom Hole

Coordinates:

Ground Elevation (ft): 4,641'

K.B. Elevation (ft): 4,663'

Logged Interval (ft): 6,574' To: xx,xxx' Total Depth (ft): xx,xxx' DTD

Formation: Pierre Shales/Sands, Sharon Springs, Niobrara Target

Type of Drilling Fluid: Water & Poly 1050' - 6200' LSND 6200' - xxxxx'

Printed by WellSight Log Viewer from WellSight Systems 1-800-447-1534 [www.WellSight.com](http://www.WellSight.com)

**OPERATOR**

Company: Mineral Resources Inc

Address: P.O. Box 328  
Greeley, CO 80632  
Collin Richardson

**GEOLOGIST**

Name: Larry Goolsby

Company: Goolsby Brothers & Assoc. (GBA), Inc. ([www.goolsbybrothers.com](http://www.goolsbybrothers.com))

Address: 575 Union Blvd.  
Suite 208,  
Lakewood CO. 80228

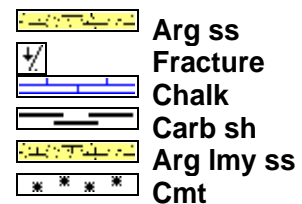
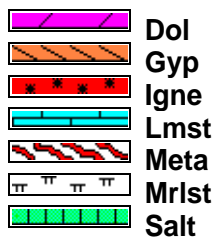
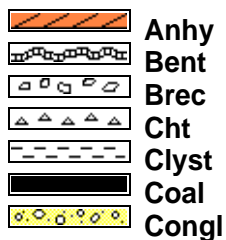
**E-Logs**

MWD GR from 6574'-xxxxx'

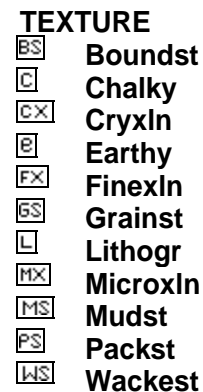
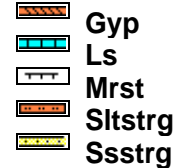
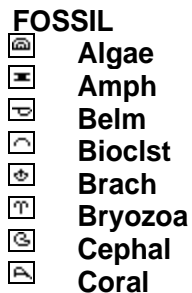
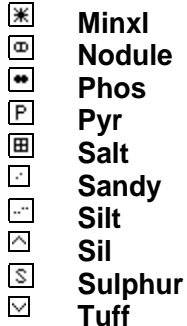
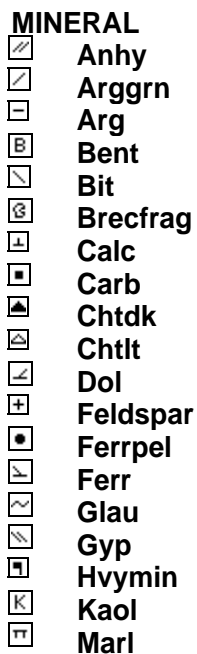
## Comments

- 1) Drilling Contractor: Precision, Rig #706  
Toolpusher: Dave Gardner
- 2) Company Man: Red Benge, Chris Montoya
- 3) Mud Comapny : Halliburton  
Engineer: Everett Allen
- 4) Directional Drilling: Ensign Directional  
Pulse Tool  
Drillers: Paul Seevers, Tanner Schwartz  
MWD: Dustin Nagle, Caleb Schwartz
- 5) Gas Equipment: Mudlogging Systems Inc.  
by Terra Services  
Redbox # ML-128 & Ratcliff Agitator
- 6) Wellsite Geologist: Larry Goolsby

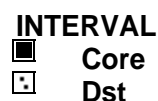
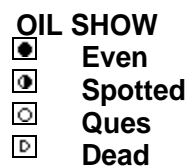
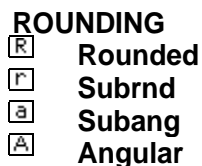
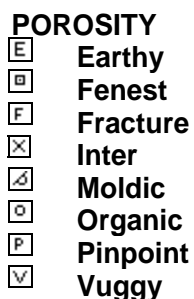
## ROCK TYPES



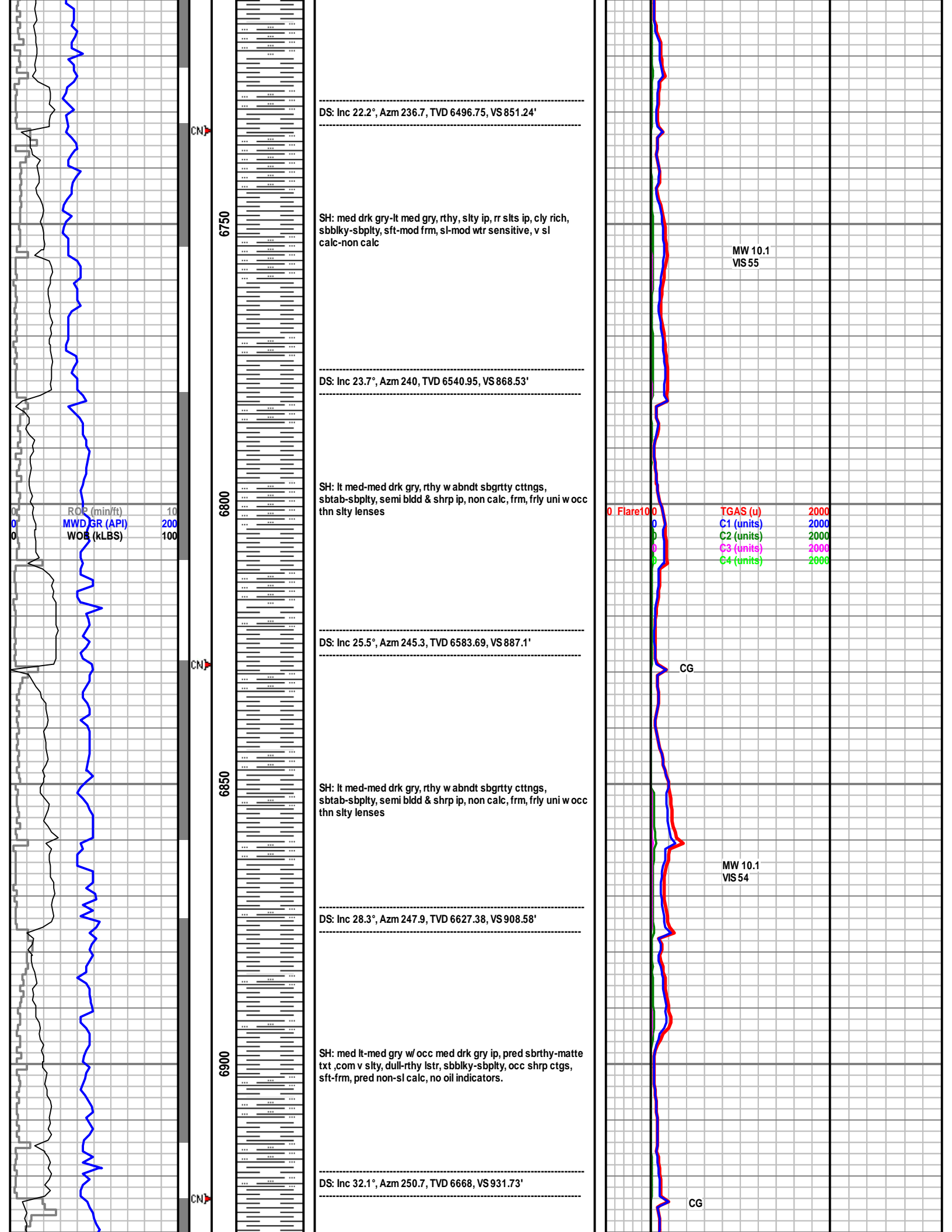
## ACCESSORIES

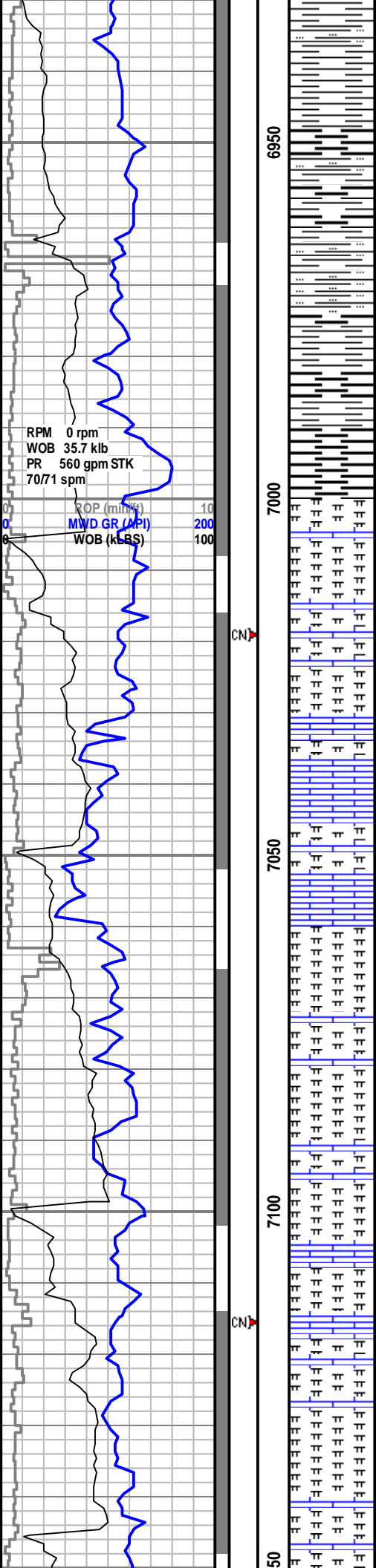


## OTHER SYMBOLS



ROP, GR, SP			Conn	Depth	Lithology	Geological Descriptions	S	Flare	TG, C1-C4				Porosity	
ROP (min/ft)	MWD GR (API)	WOB (kLBS)						Flare	TGAS (u)	C1 (units)	C2 (units)	C3 (units)		C4 (units)
0	0	0		6550		9 5/8' Surface Casing Set @ 1039' MD		0	0	0	0	0	0	
1 man wellsite geologist on location and rigged up November 27, 2013.														
RPM 0 rpm WOB 14.5 klb PR 582 gpm STK 75/72 spm				6600		Bit #2, 8 3/4", Smith, SDI611, #JH3810, 6X15, In @ 1050', out @ 7645' drilled 6595' in 49 hrs.		0	0	0	0	0	0	
KOP 6574' MD														
DS: Inc 17.1°, Azm 201.9, TVD 6361.47, VS 816.5'														
SH: med lt-med gry w/ occ med drk gry ip, pred sbrthy-matte txt, com v slty, dull-rthy lstr, sbbky-sbply, occ shrp ctgs, sft-frm, pred non-sl calc, no oil indicators.														
DS: Inc 17.5°, Azm 212.6, TVD 6406.35, VS 824.76'														
SH: med-med drk gry, occ lt gry ip, smth-sl slty txt, sbbky-sbply, sft-mod frm, mod wtr sensitive, v sl calc														
DS: Inc 19.6°, Azm 227.7, TVD 6452.83, VS 836.54'														
SH: med drk gry-lt med gry, rthy, slty ip, rr slts ip, cly rich, sbbky-sbply, sft-mod frm, sl-mod wtr sensitive, v sl calc-non calc														
Mud Data: 11-27-13 Dpth 6000' MD MW 9.15 Vis 34 PV 6 YP 3 Gel 1/2/3 Sol 5.2% Oil 0% Cl 800 LGS 4.3% Ca 40														
MW 10.1 VIS 54														





CARB SH: drk gry-gryish blk, rthy, sbwxy ip, cly rich, hvy amts of carb mat thru, sbblky-plty, sft-mod frm, sl-mod wtr sensitive, v sl calc-non calc

DS: Inc 36.2°, Azm 255.1, TVD 6707.72, VS 958.4'

### NIOBRARA 6,999' MD, 6,731 TVD (-2,068')

CARB SH: drk gry-gryish blk, rthy, sbwxy ip, cly rich, hvy amts of carb mat thru, sbblky-plty, sft-mod frm, sl-mod wtr sensitive, v sl calc-non calc

DS: Inc 40.5°, Azm 257.6, TVD 6744.57, VS 987.46'

### NIOBRARA A CHALK 7,031' MD, 6,756' TVD (-2,093')

MRLSTN (70%): med-med drk-gry, pred chlky, v rthy ip, sbplty-sl shrp, frm, v calc, cly sptd mtx, no vis por, no vis ini fluor, fr cldy yel diffs cuts, mod brt yel res rng, sl gsy odor.  
CARB CHLK (30%)

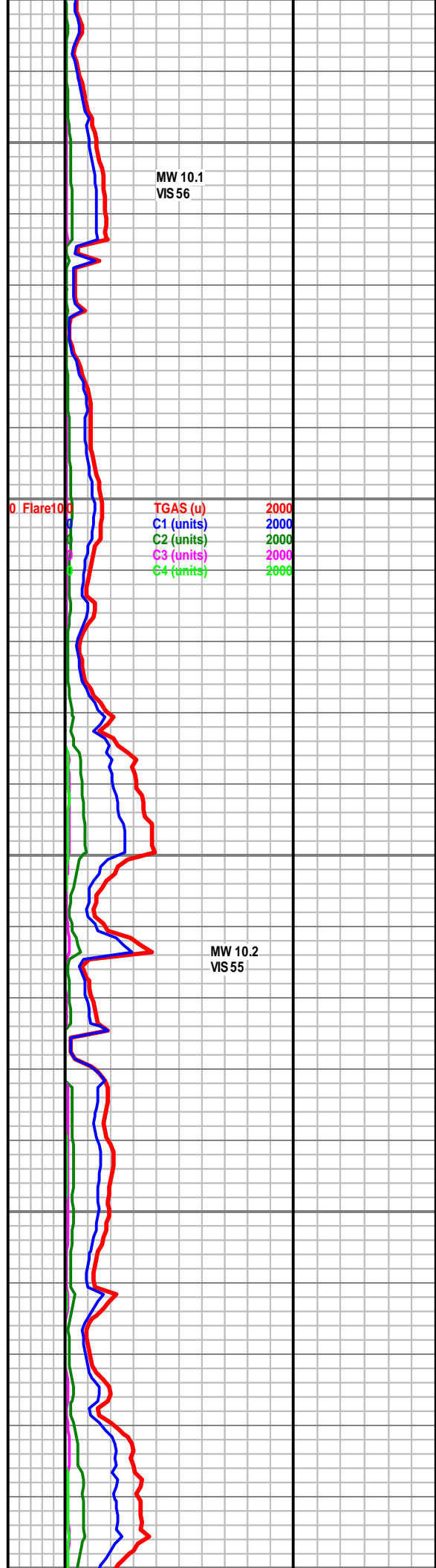
### NIOBRARA A MARL 7,059' MD, 6,776' TVD (-2,113')

DS: Inc 44.2°, Azm 256.2, TVD 6780.78, VS 1020.38'

MRLSTN: drk gry-gryblk, v f rthy txt, plty-sbblky, hgily fiss thru, frm-sl hd, v calc, micritic mud sptd mtx, hvy blk carb fil, no pri fluor, wk hzy yelish gm cuts, fr-gd res cld, tr gsy odor, tr chlk

DS: Inc 49.6°, Azm 255.8, TVD 6812.88, VS 1054.56'

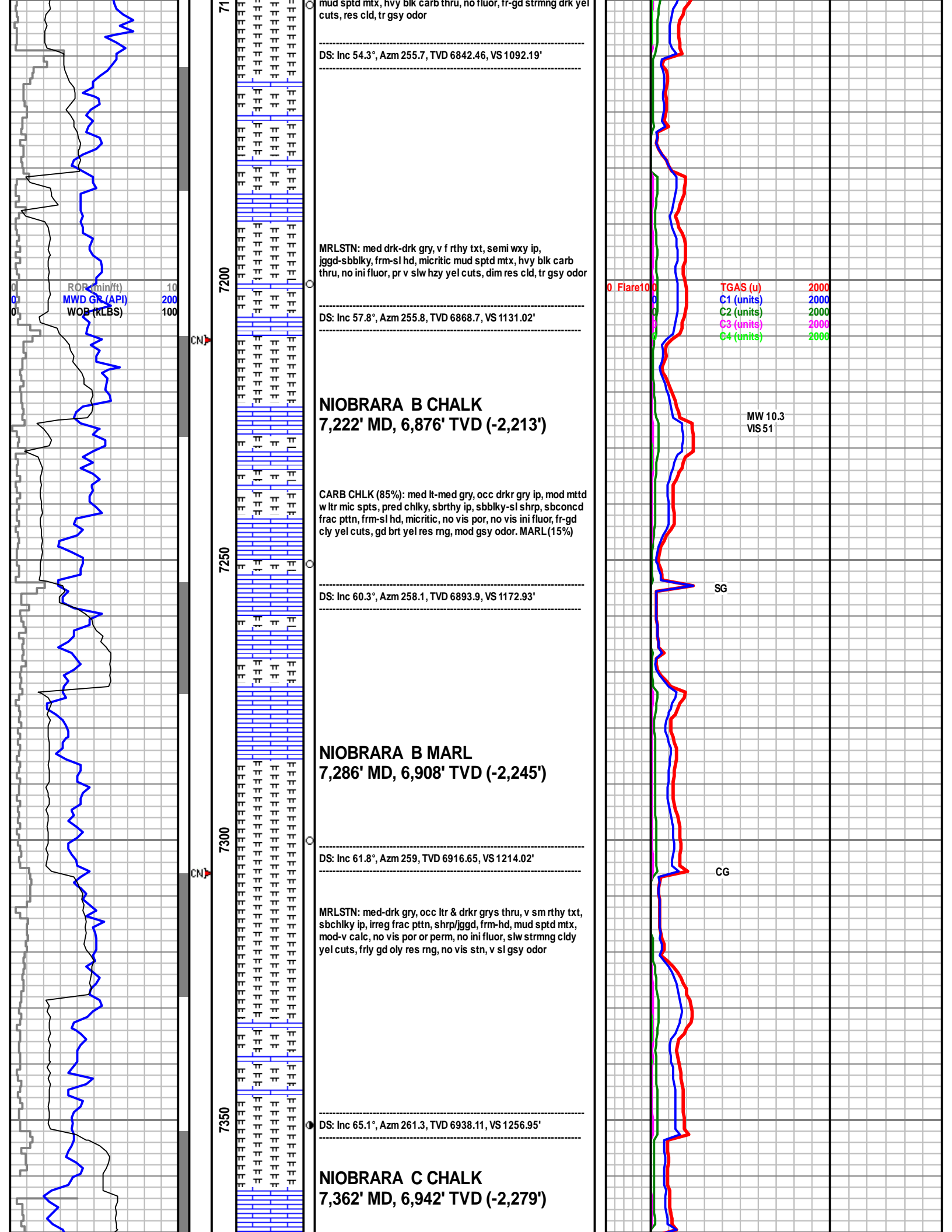
MRLSTN: med drk-drk gry, v f rthy txt, semi wxy ip, jggd-sbblky, frm-sl hd, occ dissem pyrtc clstr, v calc, micritic

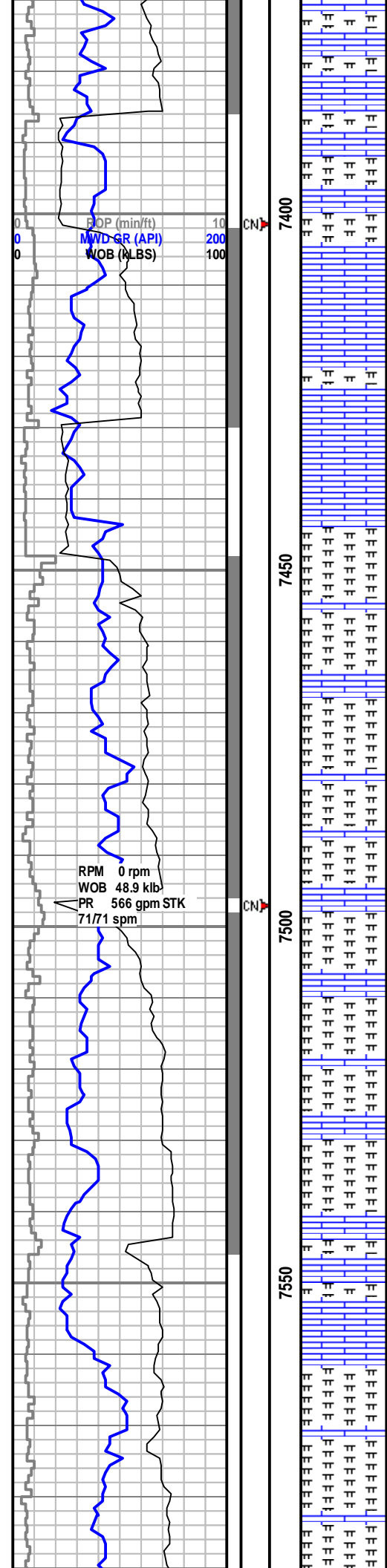


MW 10.1  
VIS 56

0 Flare 1000  
TGAS (u) 2000  
C1 (units) 2000  
C2 (units) 2000  
C3 (units) 2000  
C4 (units) 2000

MW 10.2  
VIS 55





**CARB CHLK (micrite):** med gry, sl med drk ip, rr mttld w lt tan spcks, sbchlkly-sbrthy, semi plty-sl blkly, v crmbly, sft frm, calc mud sptd mtx, no vis por, mstly non fluor-v dim sptty ini fluor, wk slw dif grnish yel cuts, drk yel res rng, mod gsy odor

**DS: Inc 67.6°, Azm 265.2, TVD 6956.97, VS 1299.95'**

**CARB CHLK (micrite):** med gry, sl med drk ip, rr mttld w lt tan spcks, sbchly-sbrthy, semi plty-sl bkly, v crmbly, sft-frm, calc mud sptd mtx, no vis por, mstly non fluor-v dim sppty ini fluor, wk slw dfrn grnsh yel cuts, drk yel res rng, mod gsy odor

**NIOBRARA C MARL**  
**7,443' MD, 6,973' TVD (-2,310')**

**DS: Inc 70.7°, Azm 268.3, TVD 6974.05, VS 1344.56'**

**MRLSTN:** med drk-gryblk, pred chlky, sbrthy & sbwxy ip, sbptly-sl shrp, frm, v calc, cly sptd mtx, no vis por, no vis ini fluor, wk yel cldy cuts, mod brt yel res rng, no odor

**DS: Inc 76.0°, Azm 272.4, TVD 6987.52, VS 1388.95'**

**MRLSTN (75%):** med drk-gryblk, pred chlky, sbrthy & sbwxy  
ip, sbplyt-sl shrp, frm, v calc, cly sptd mtx, no vis por, no vis  
ini fluor, wk yel cldy cuts, mod brt yel res rng, no odor. CARE  
**CHLK (25%)**

DS: Inc 83.0°, Azm 276.2, TVD 6996.45, VS 1435.78'

**CARB CHLK (70%):** med gry, sl med drk ip, rr mttld w lt tan spcks, sbchlkly-sbrthy, semi plty-sl blkly, v crmbly, sft frm, calc mud spd mtz, no vis por, mstly non fluor-v dim sppty ini fluor, wk slw dif grnish yel cuts, drk yel res rng, mod gsy odor, 30% MARL

