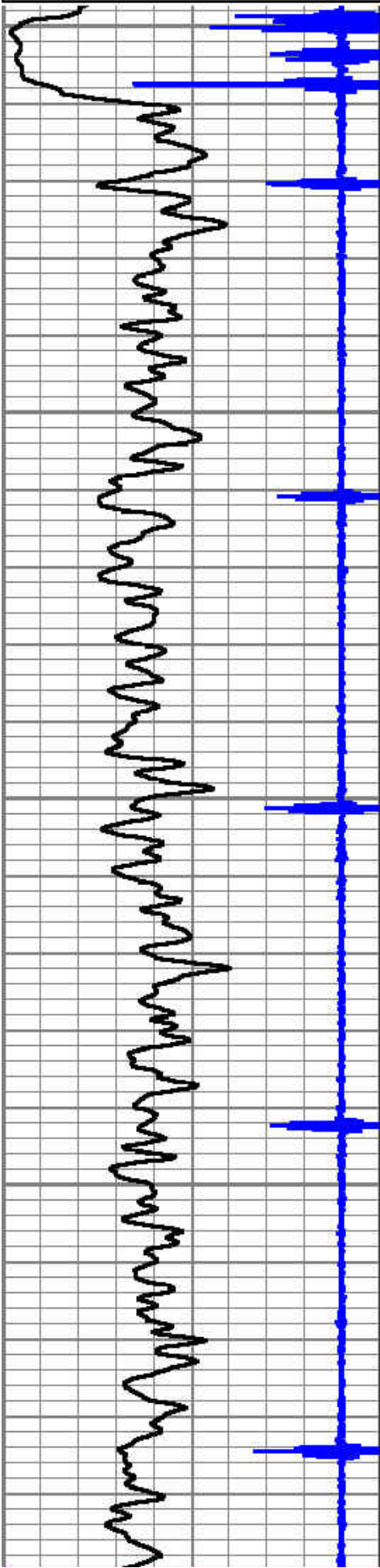


9	Collar Locator	-1
0	Gamma Ray (GAPI)	200

0	AMP AMPLITUDE (mV)	10
0	AMPLITUDE (mV)	100

200 VDL 1200



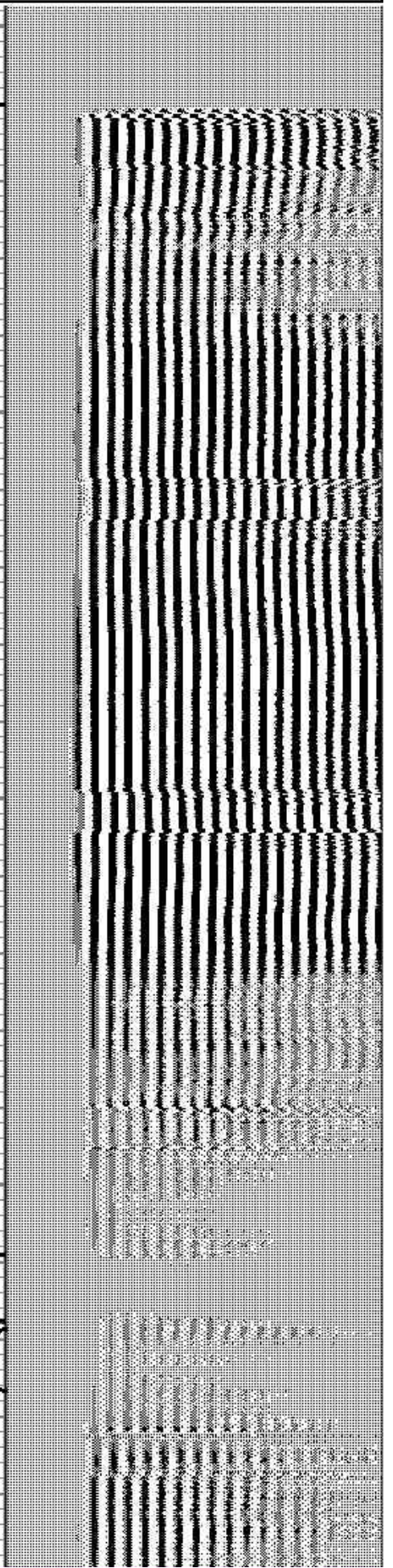
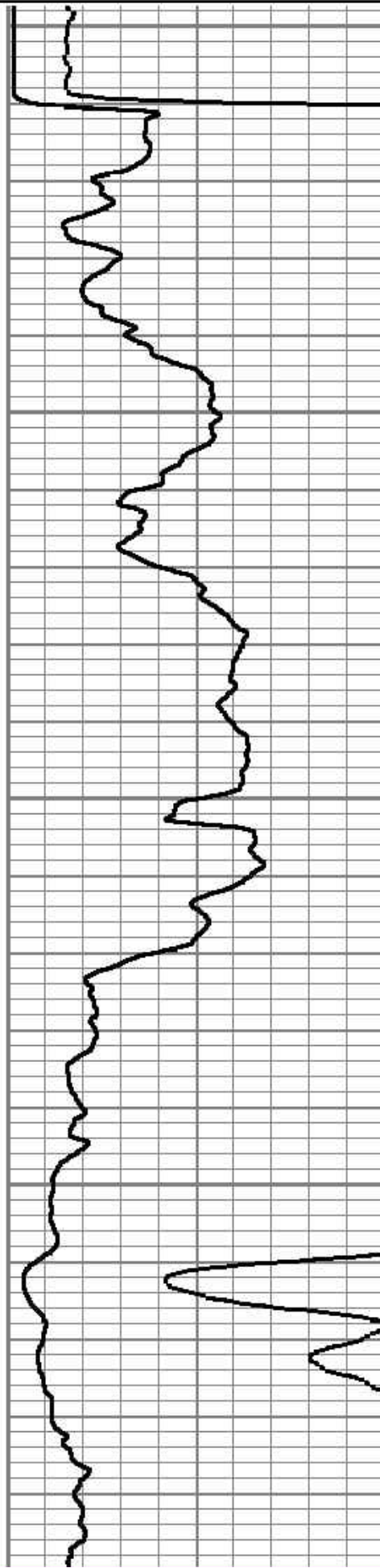
0

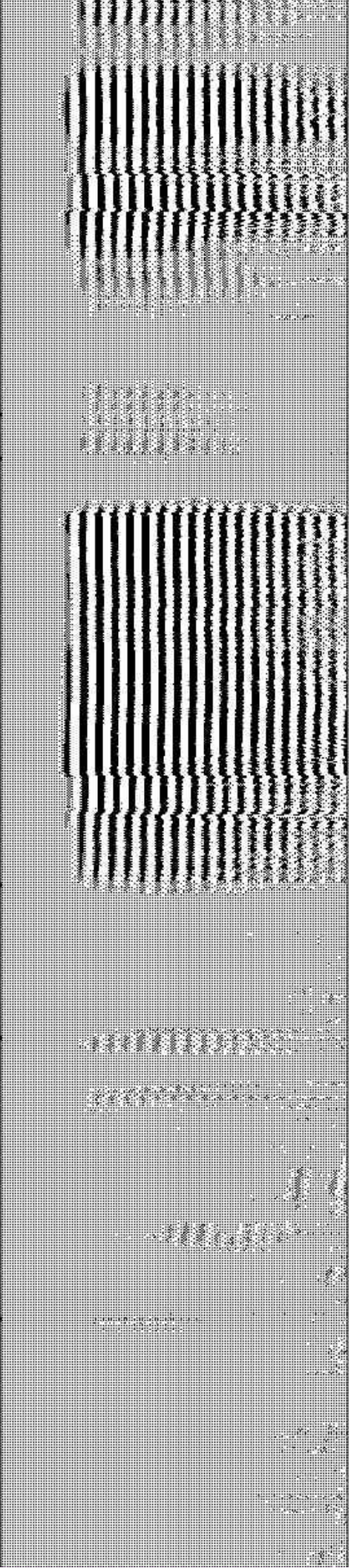
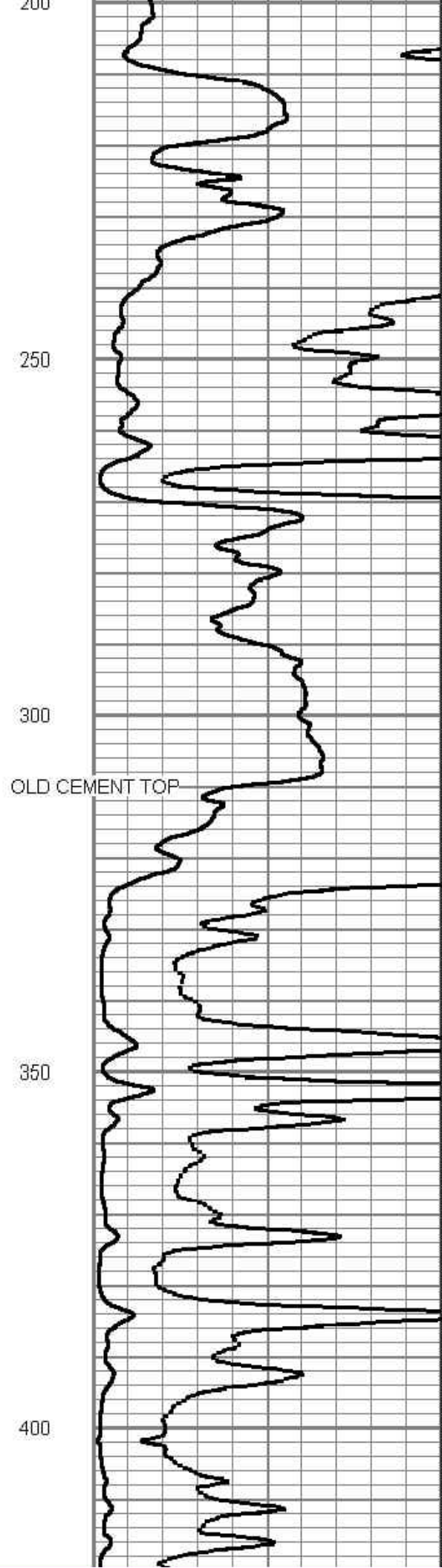
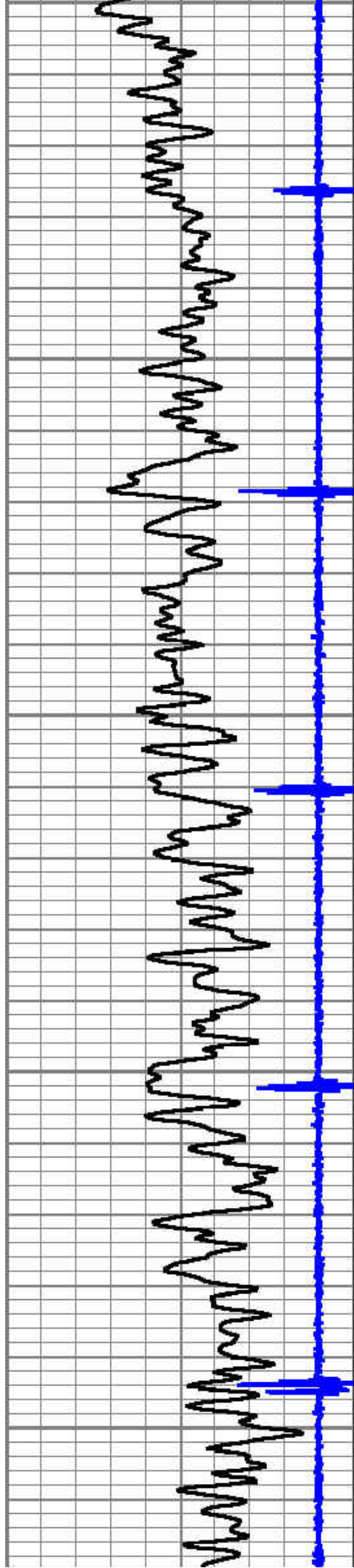
50

100

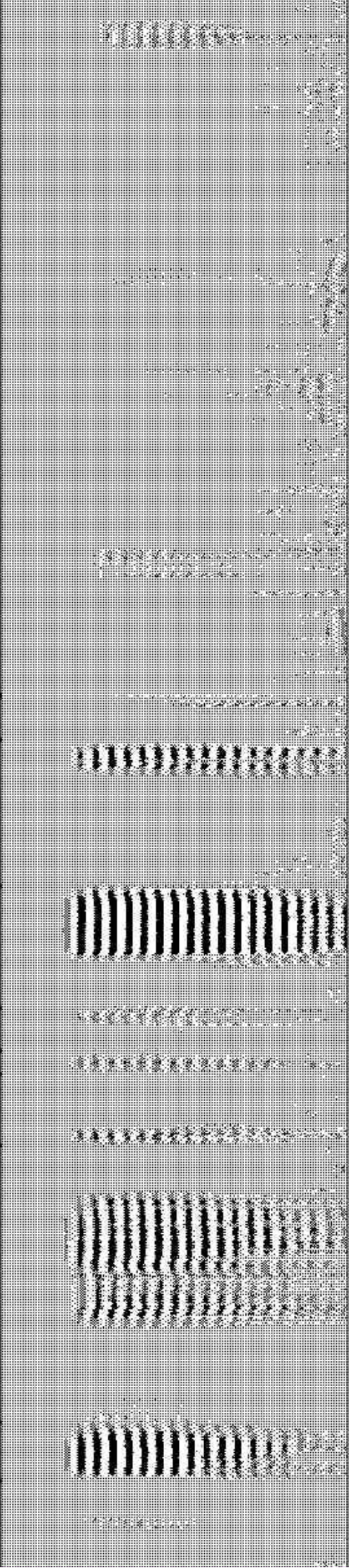
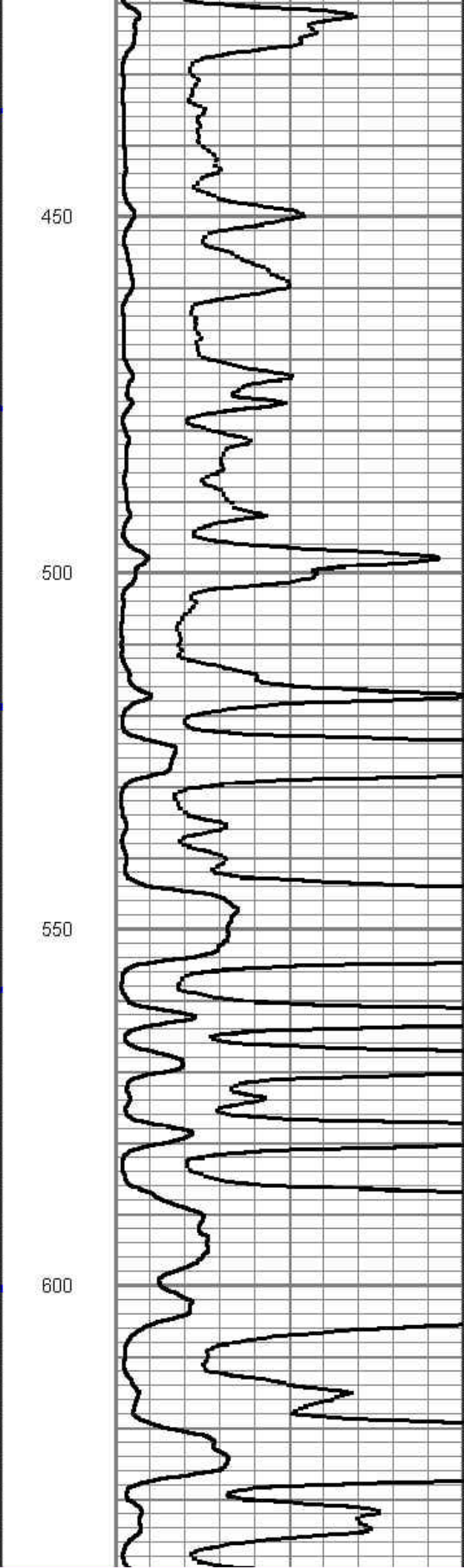
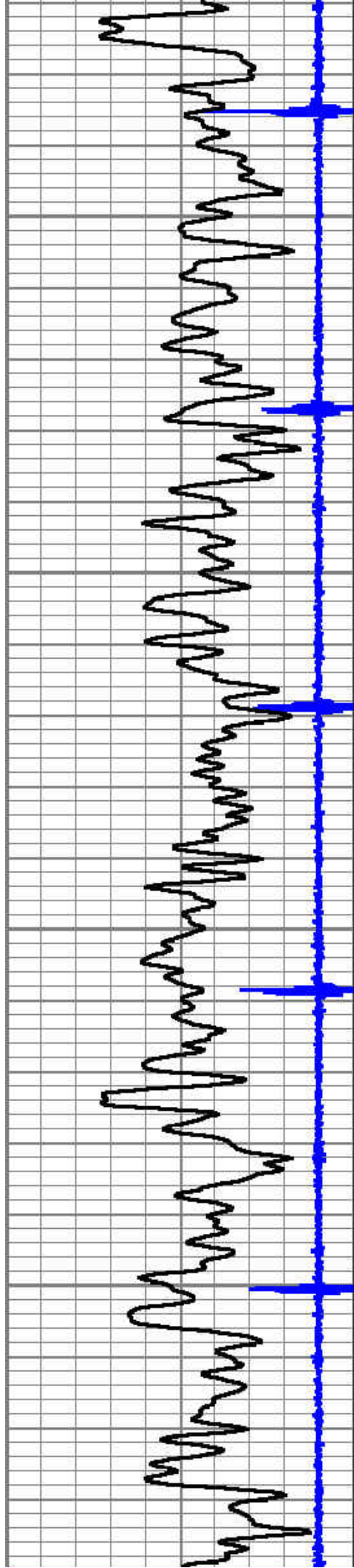
150

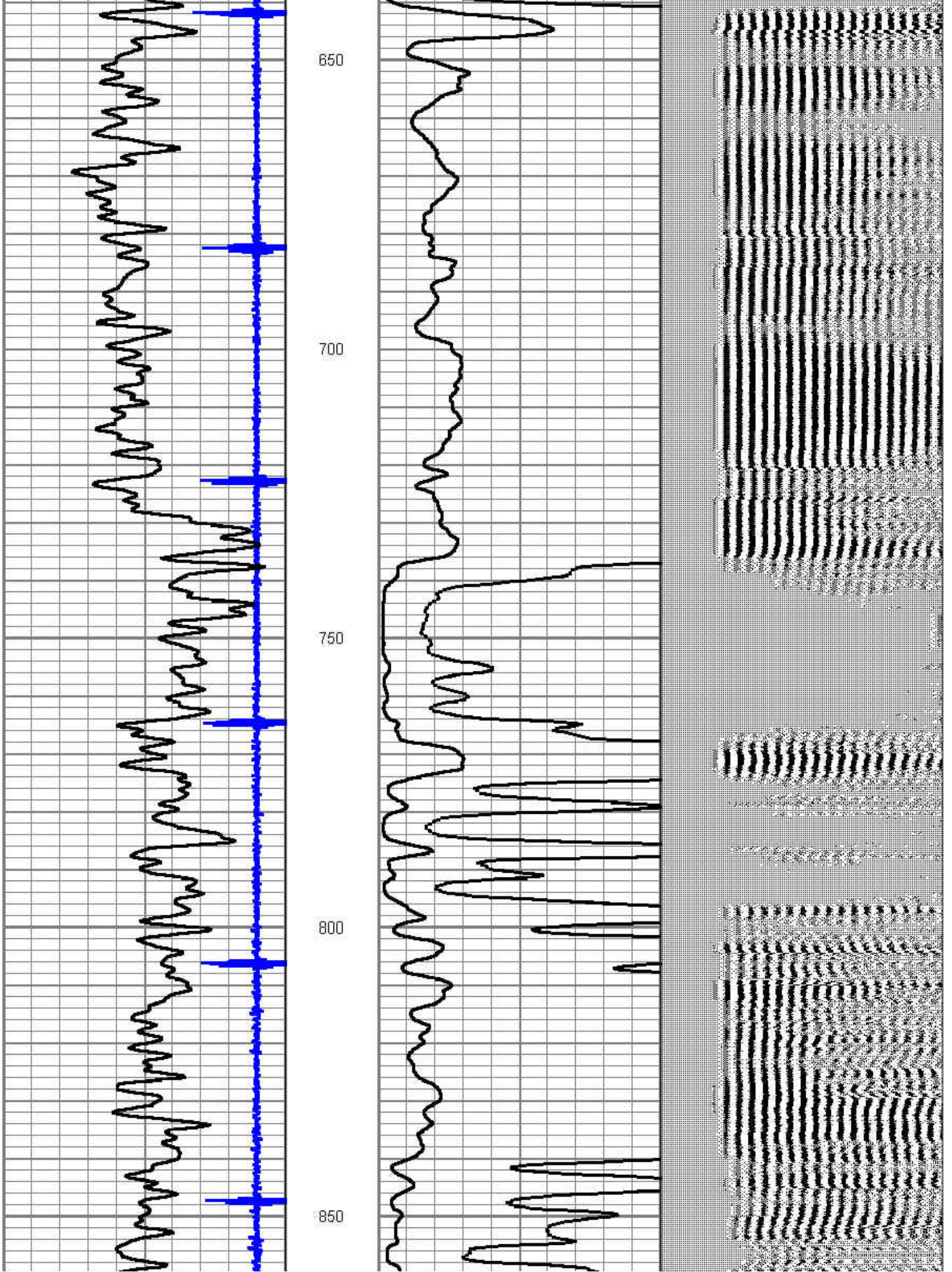
200

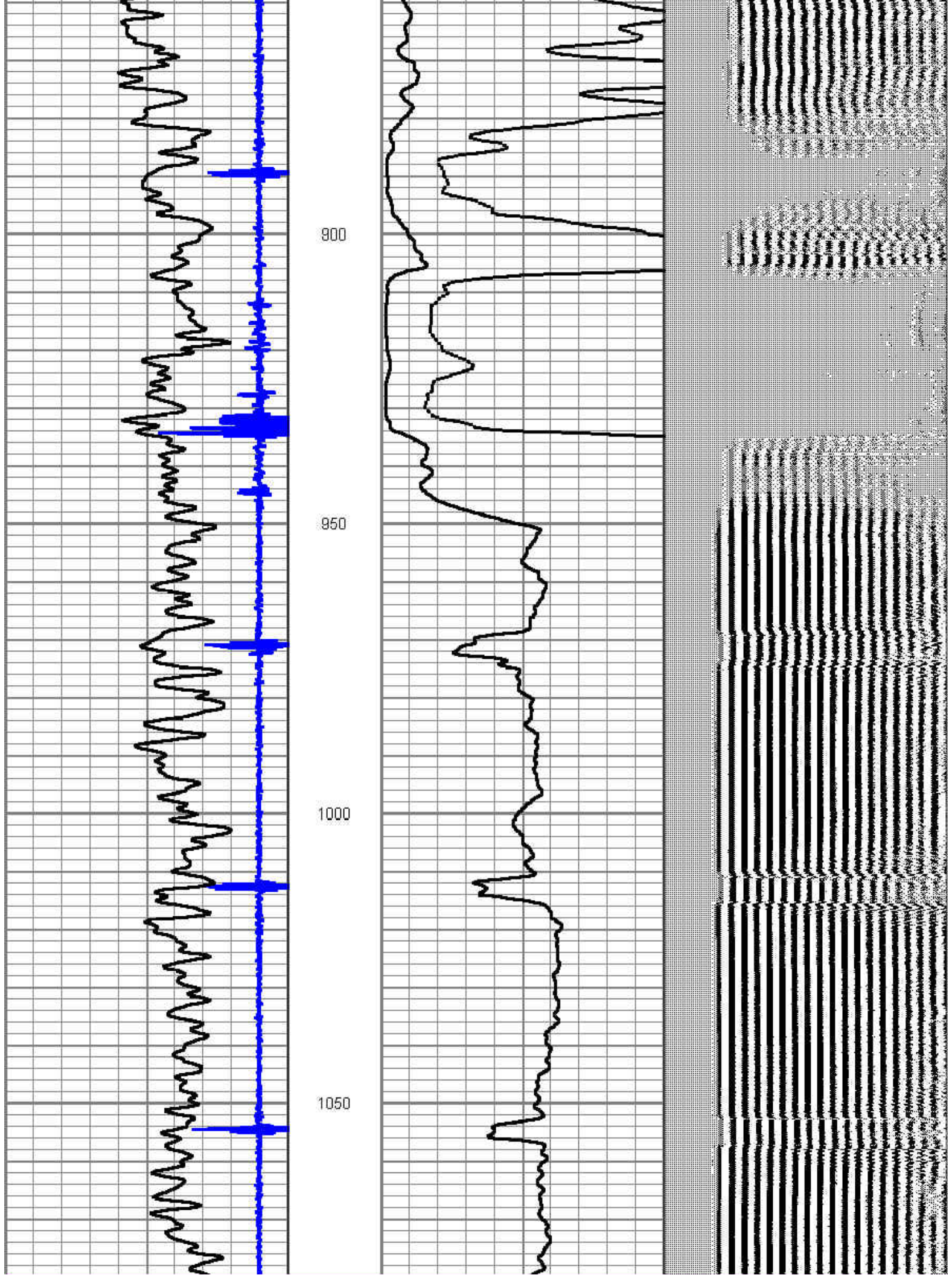


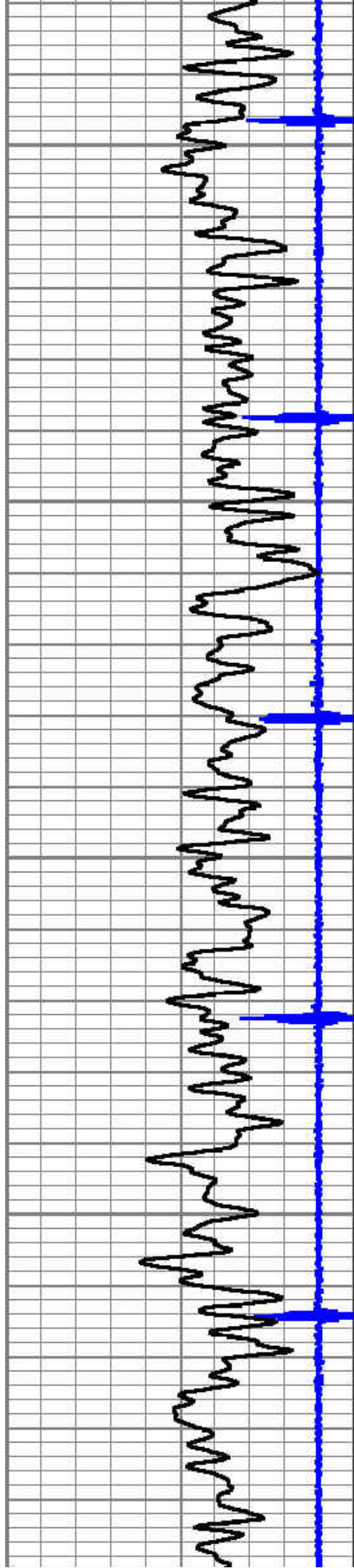


200
250
300
OLD CEMENT TOP
350
400









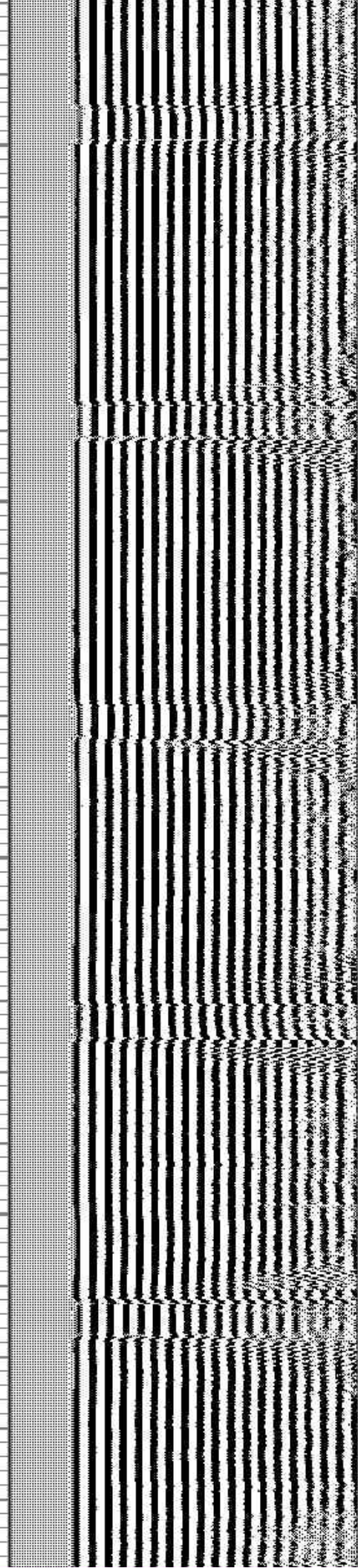
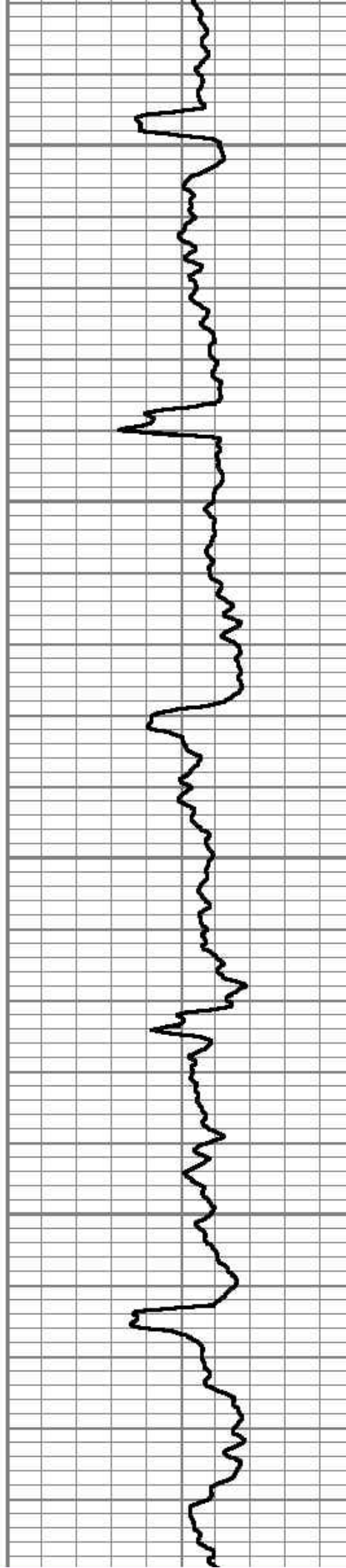
1100

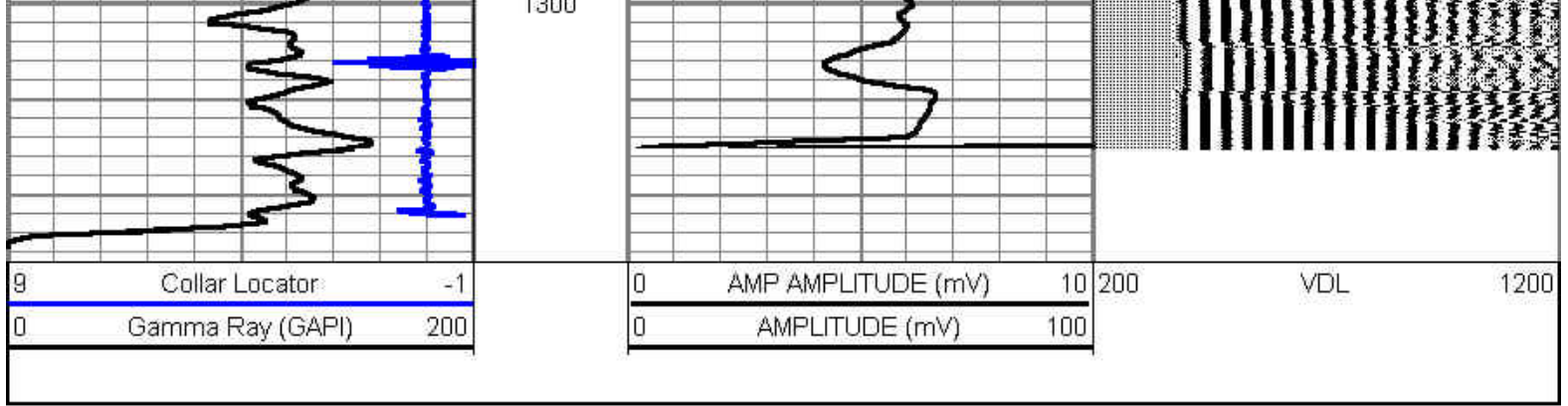
1150

1200

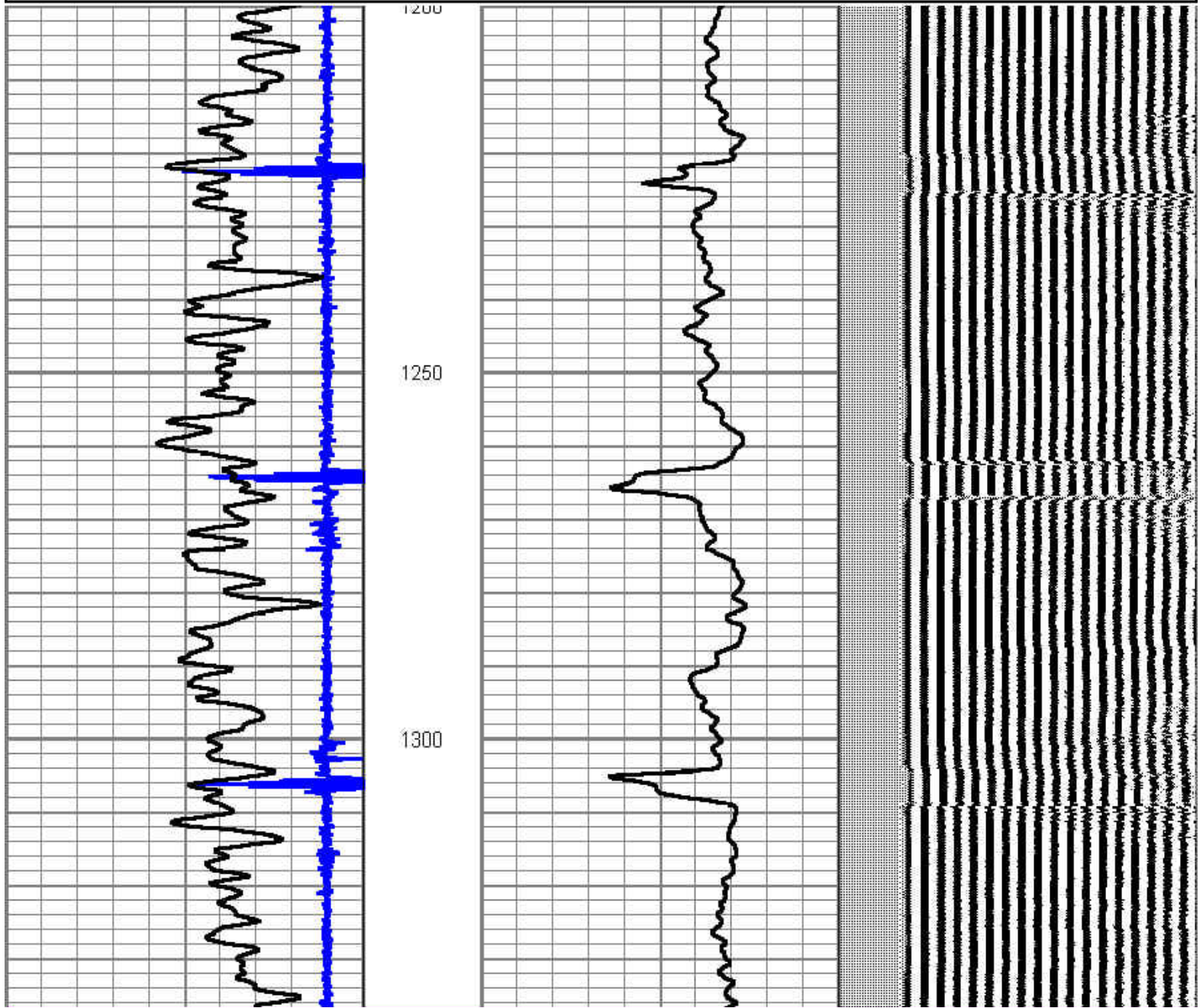
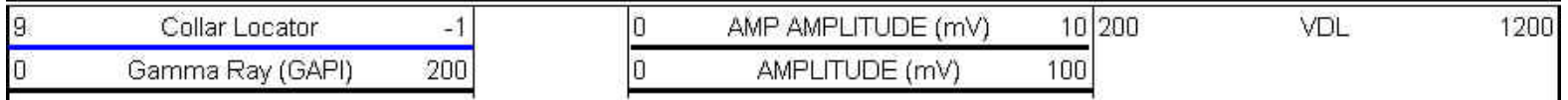
1250

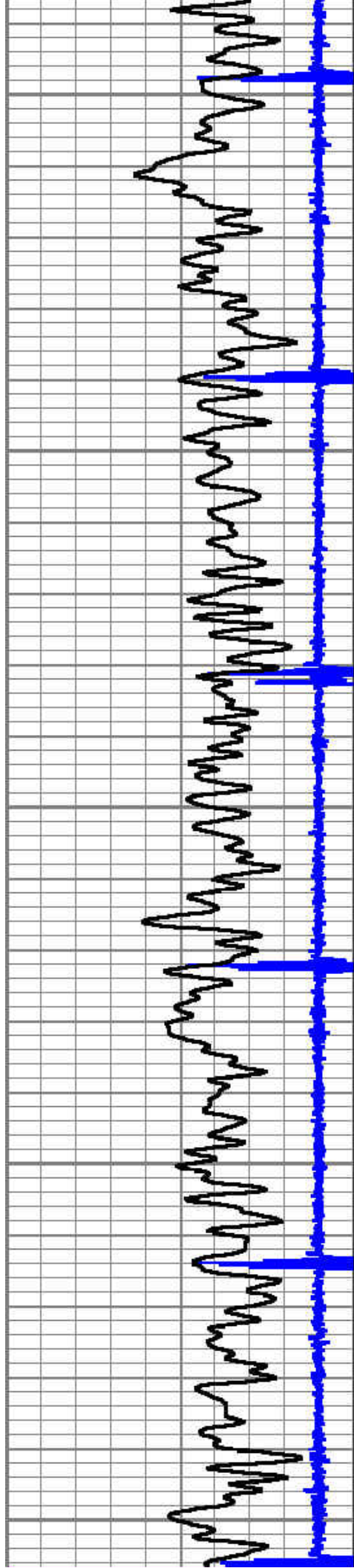
1300





Database File: ranchero_#1.db
 Dataset Pathname: pass6
 Presentation Format: cbl_drs
 Dataset Creation: Thu Feb 27 14:31:54 2014 by Log SCH 120430
 Charted by: Depth in Feet scaled 1:240





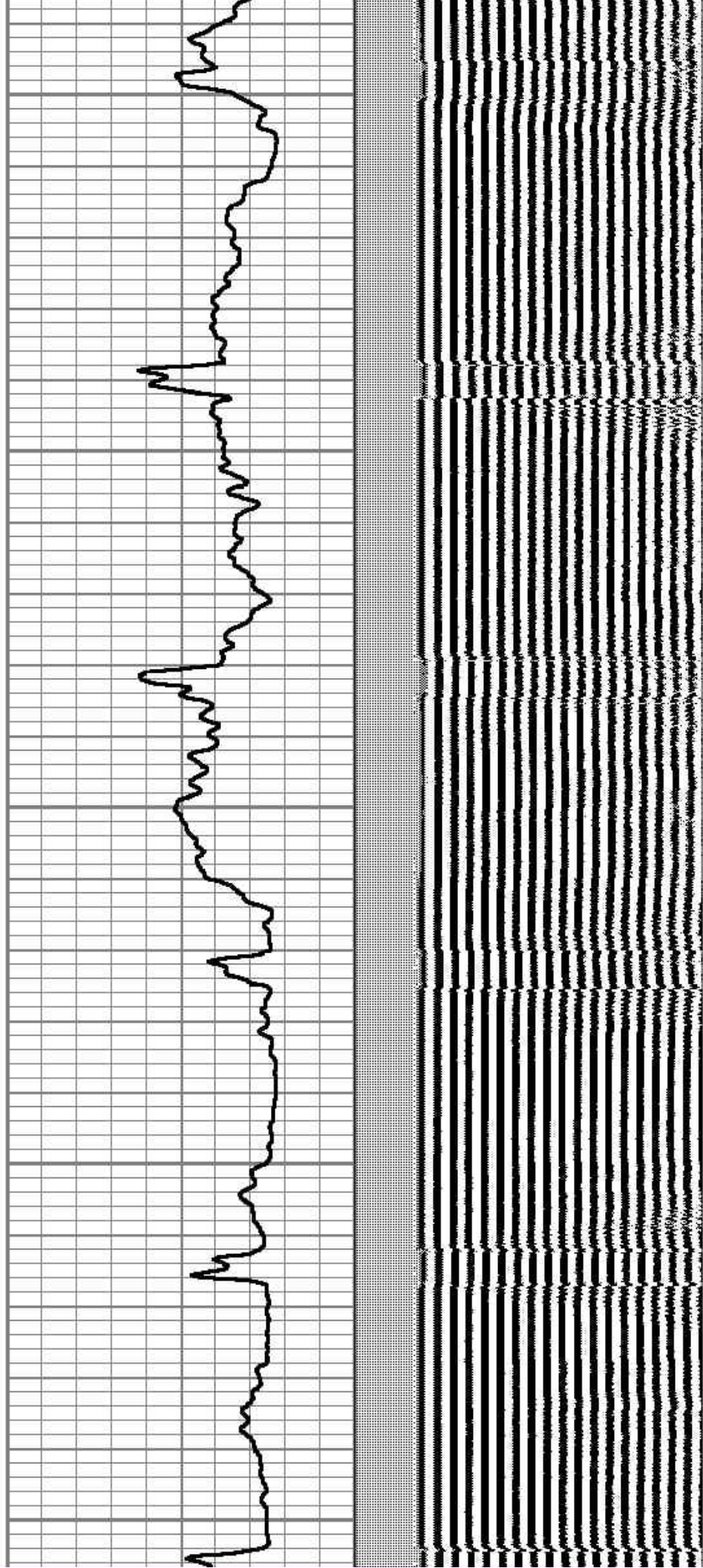
1350

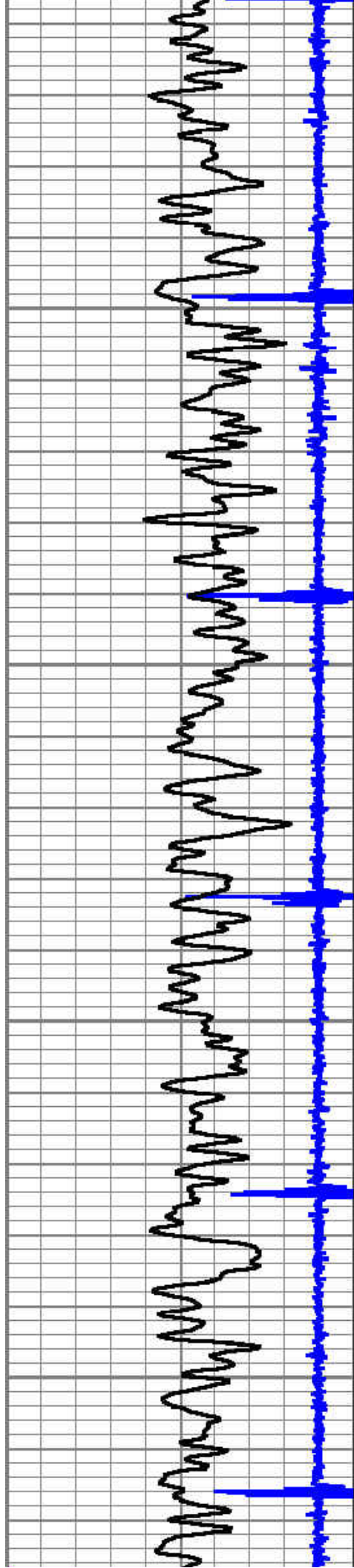
1400

1450

1500

1550



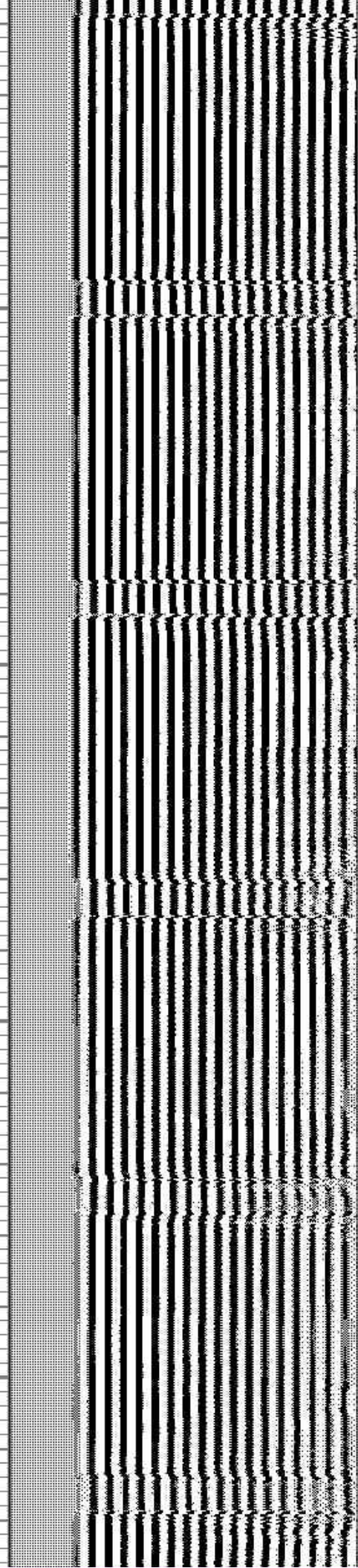
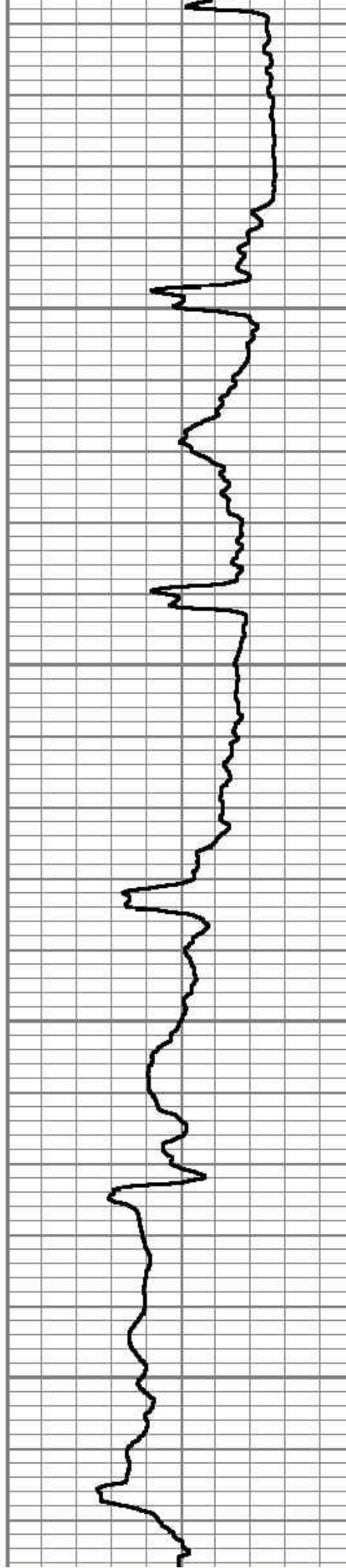


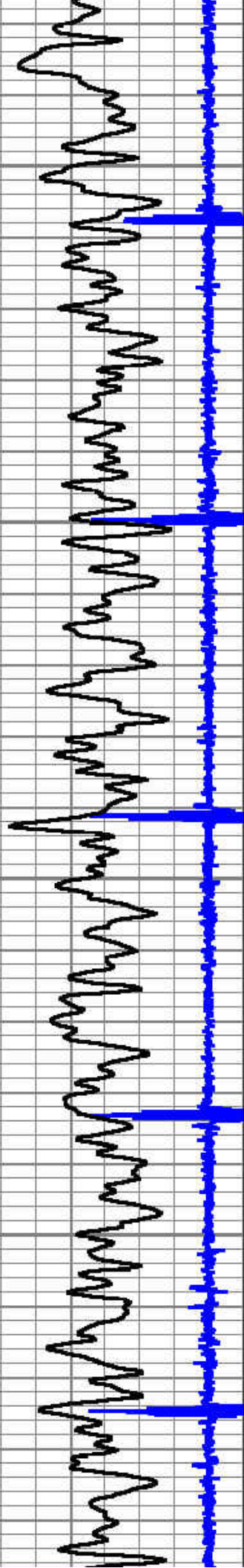
1600

1650

1700

1750



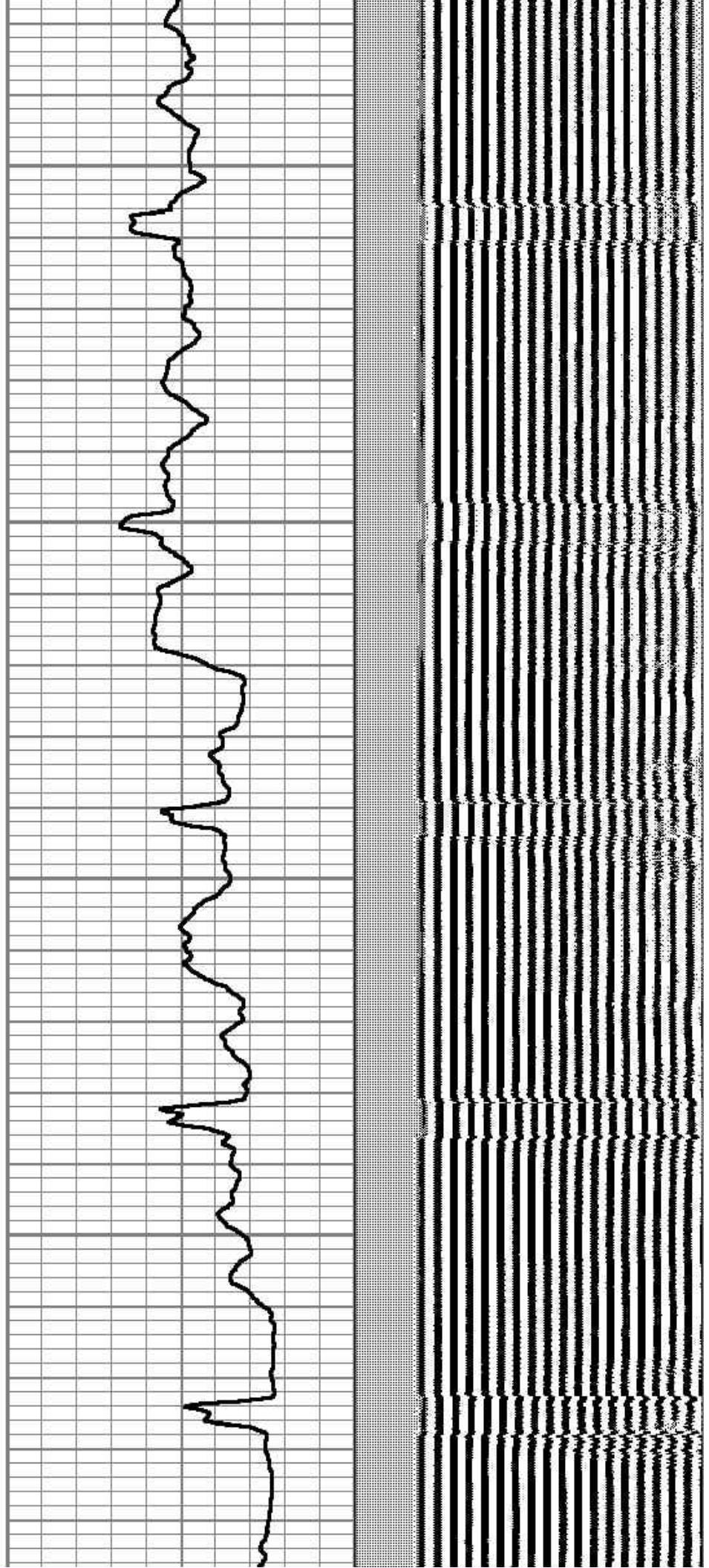


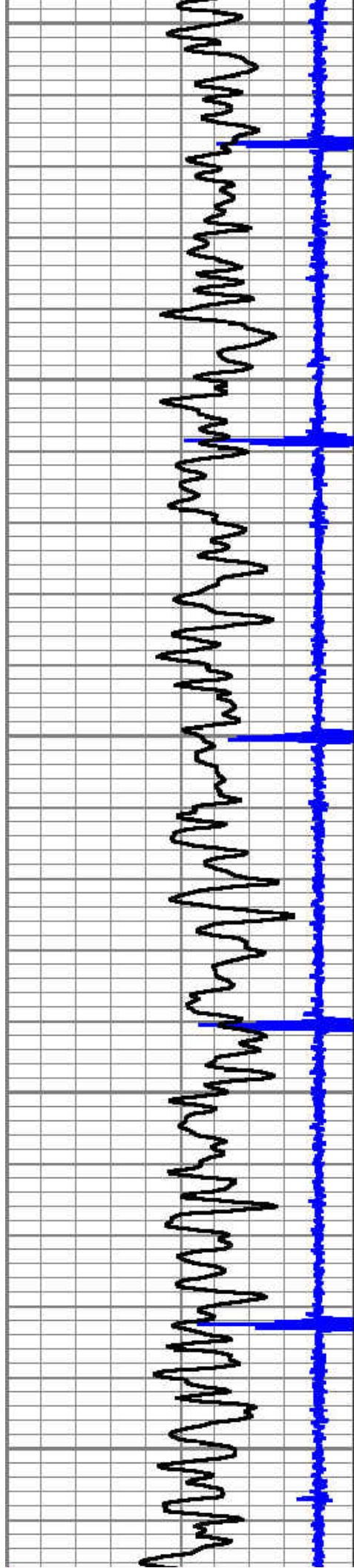
1800

1850

1900

1950





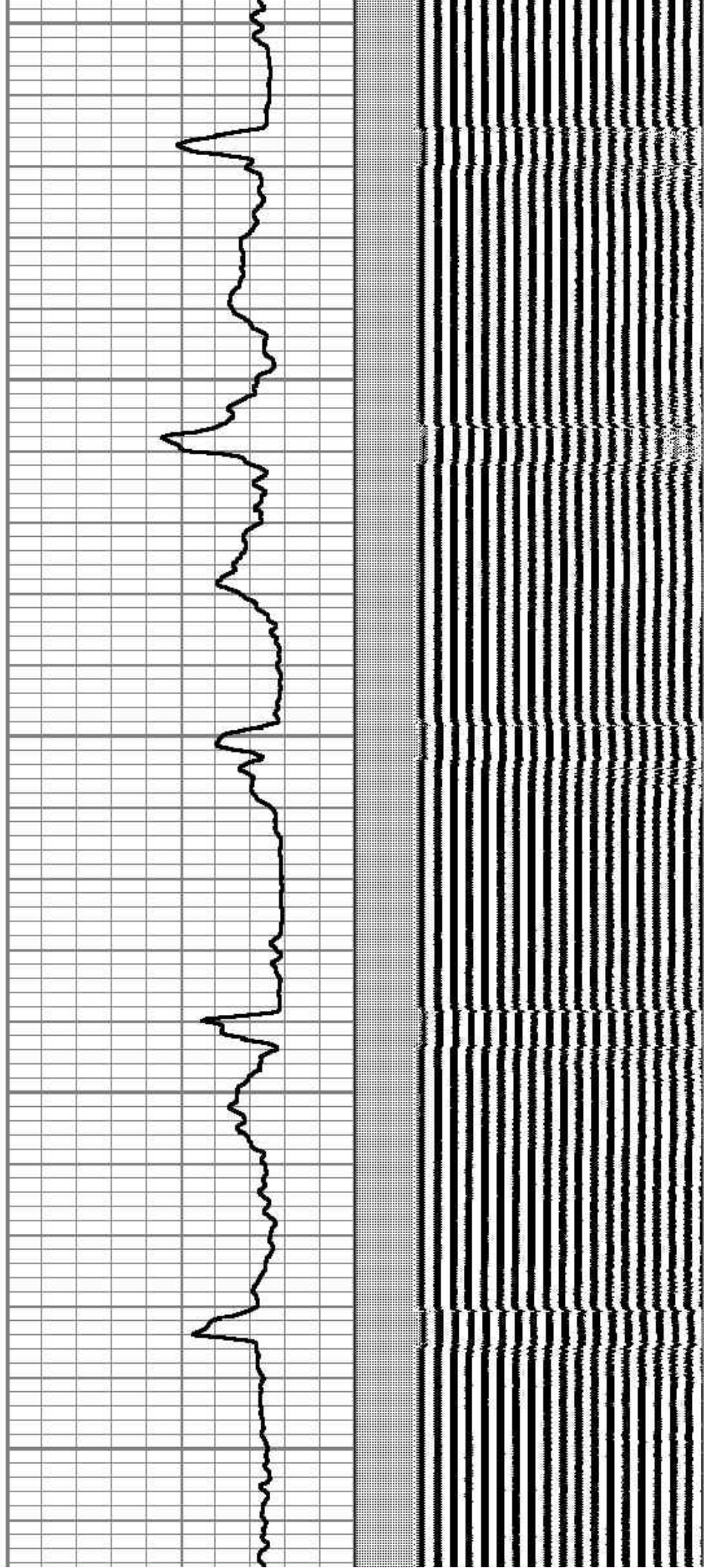
2000

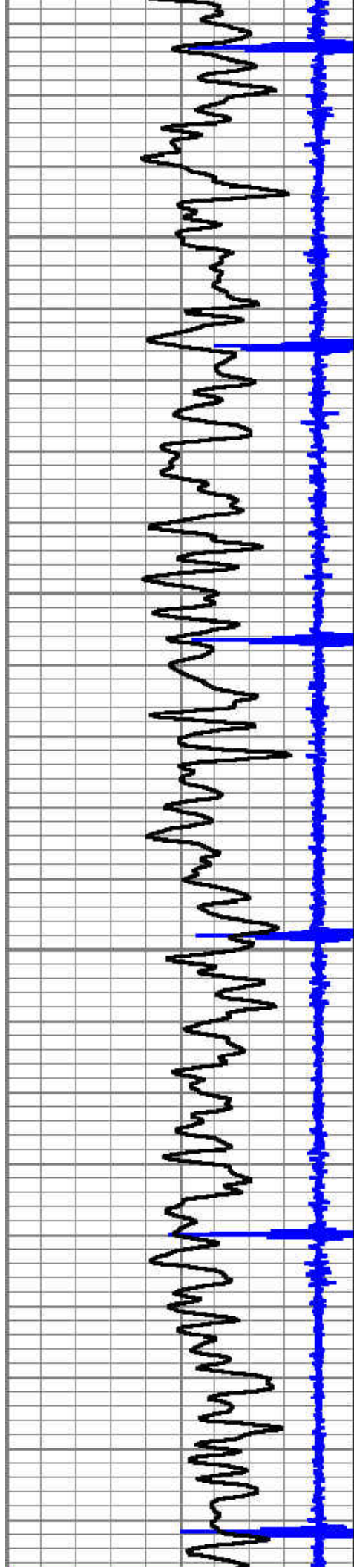
2050

2100

2150

2200



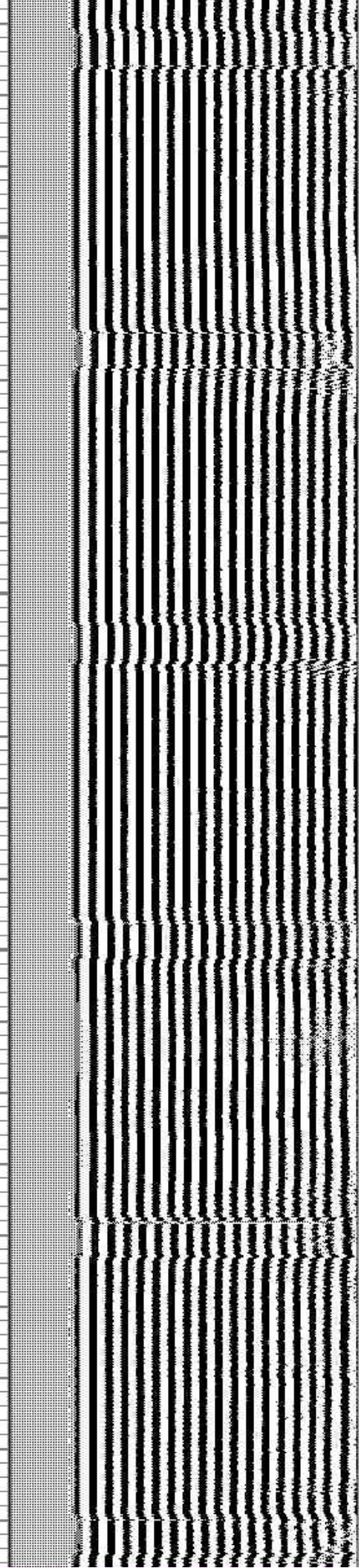
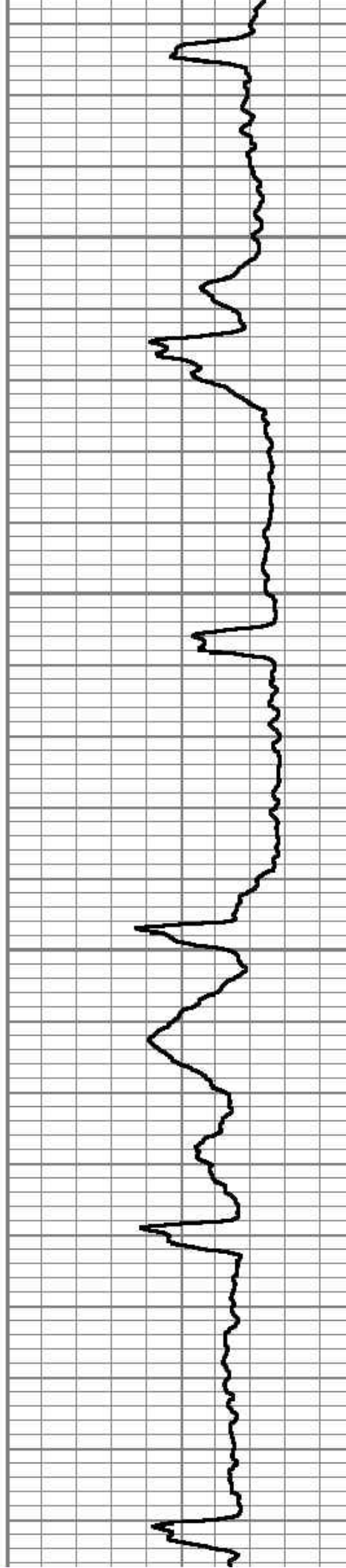


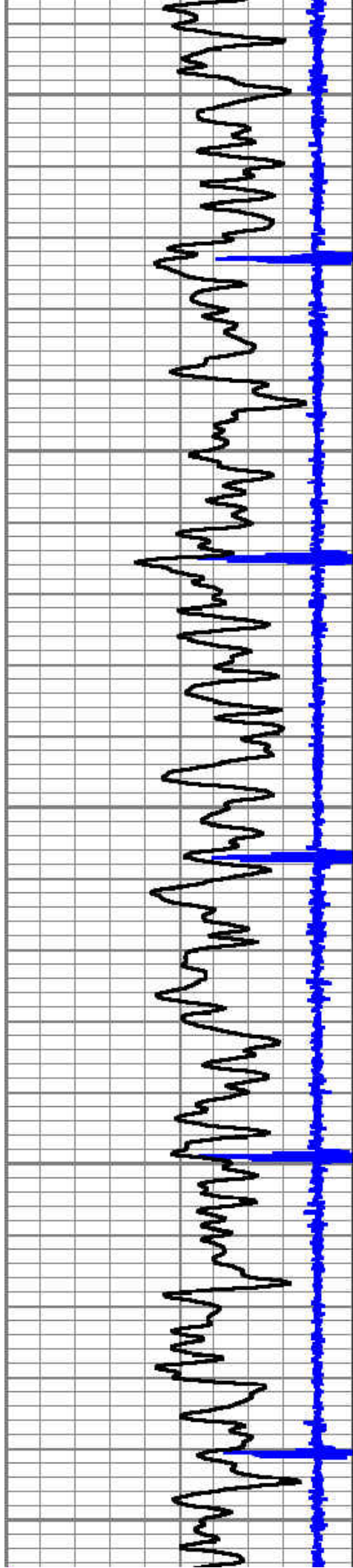
2250

2300

2350

2400





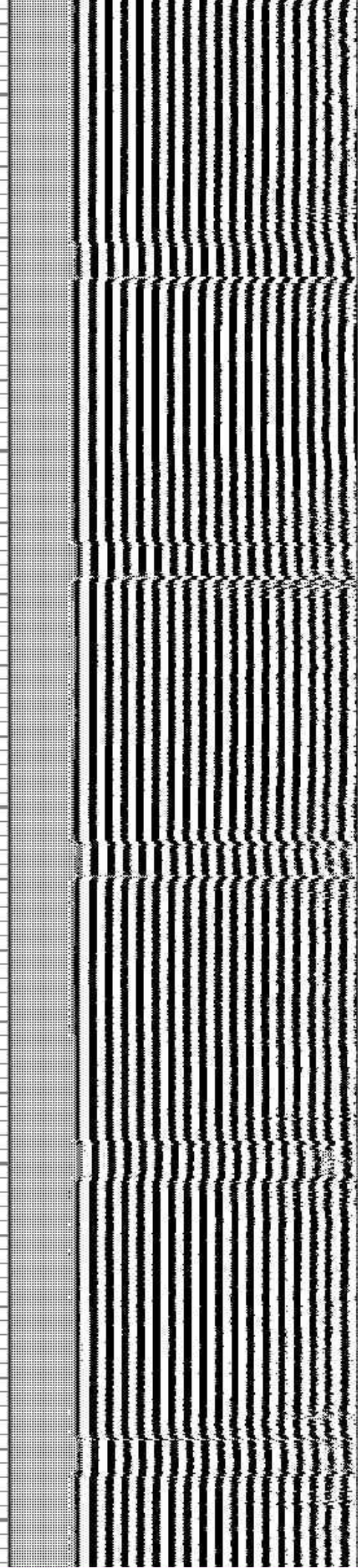
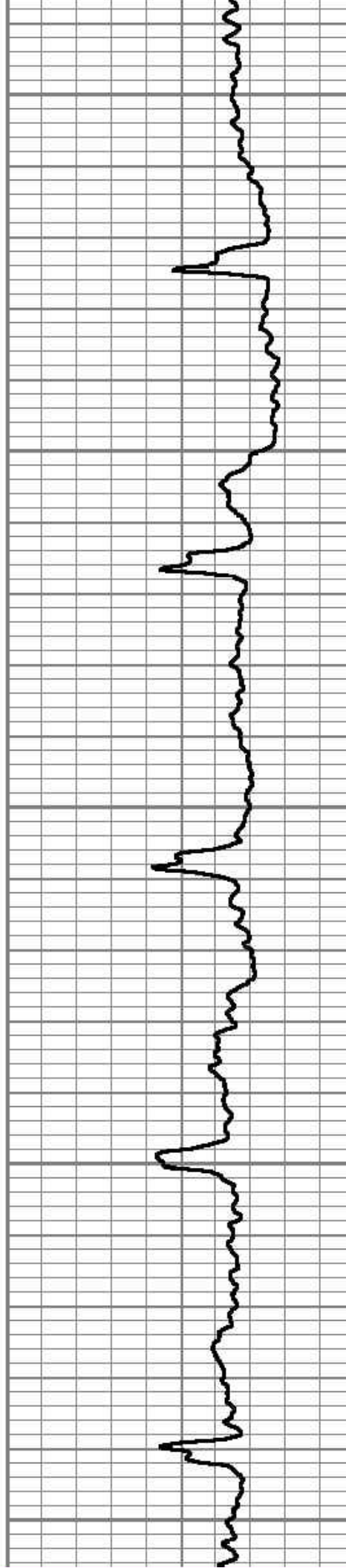
2450

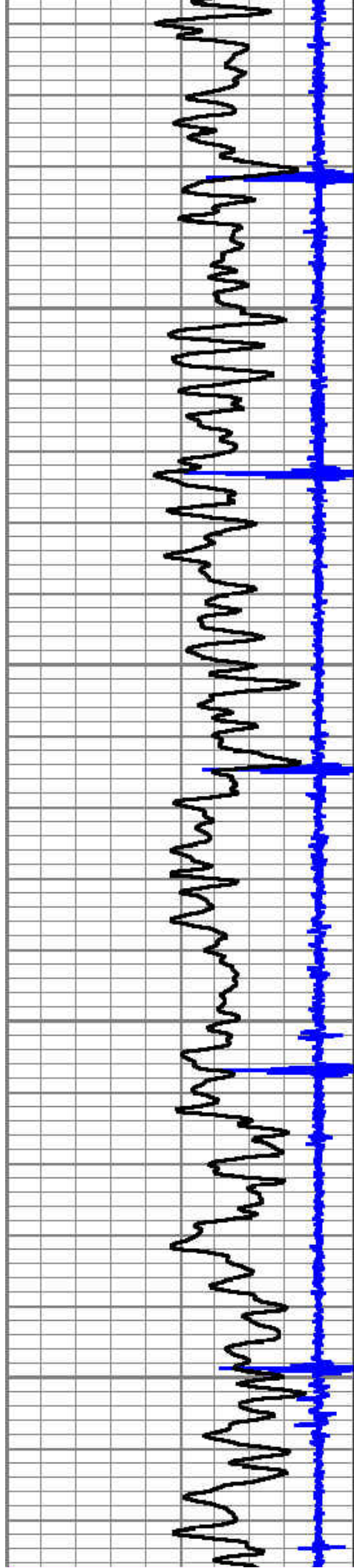
2500

2550

2600

2650



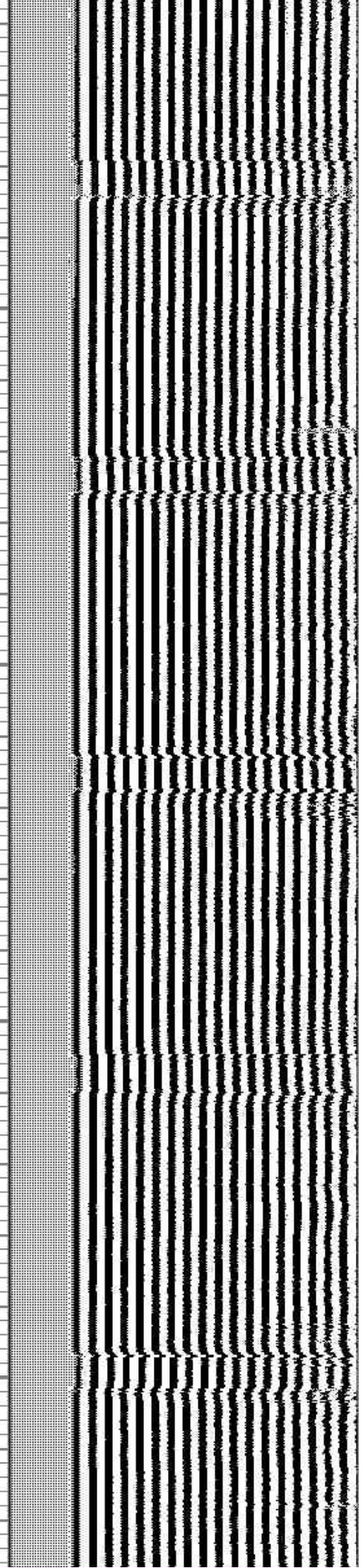
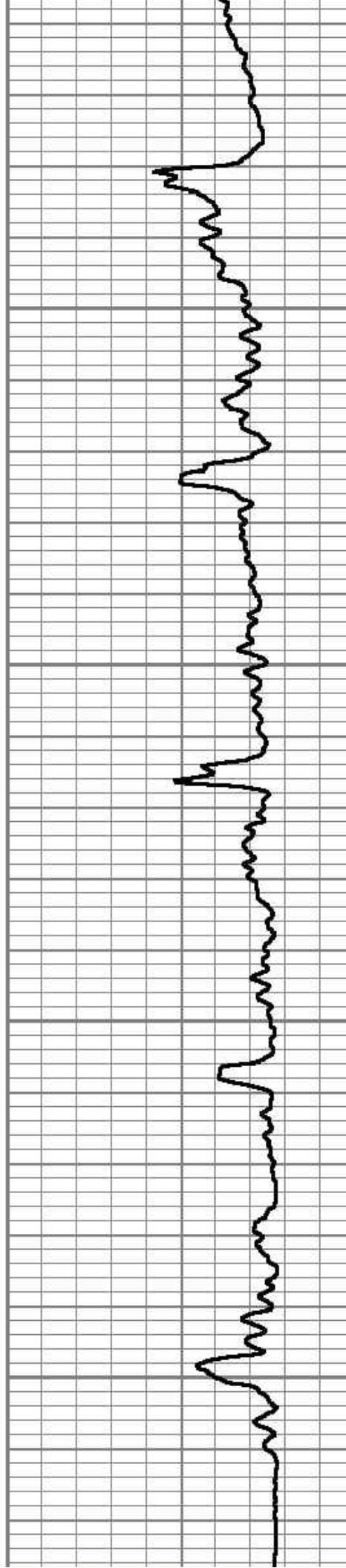


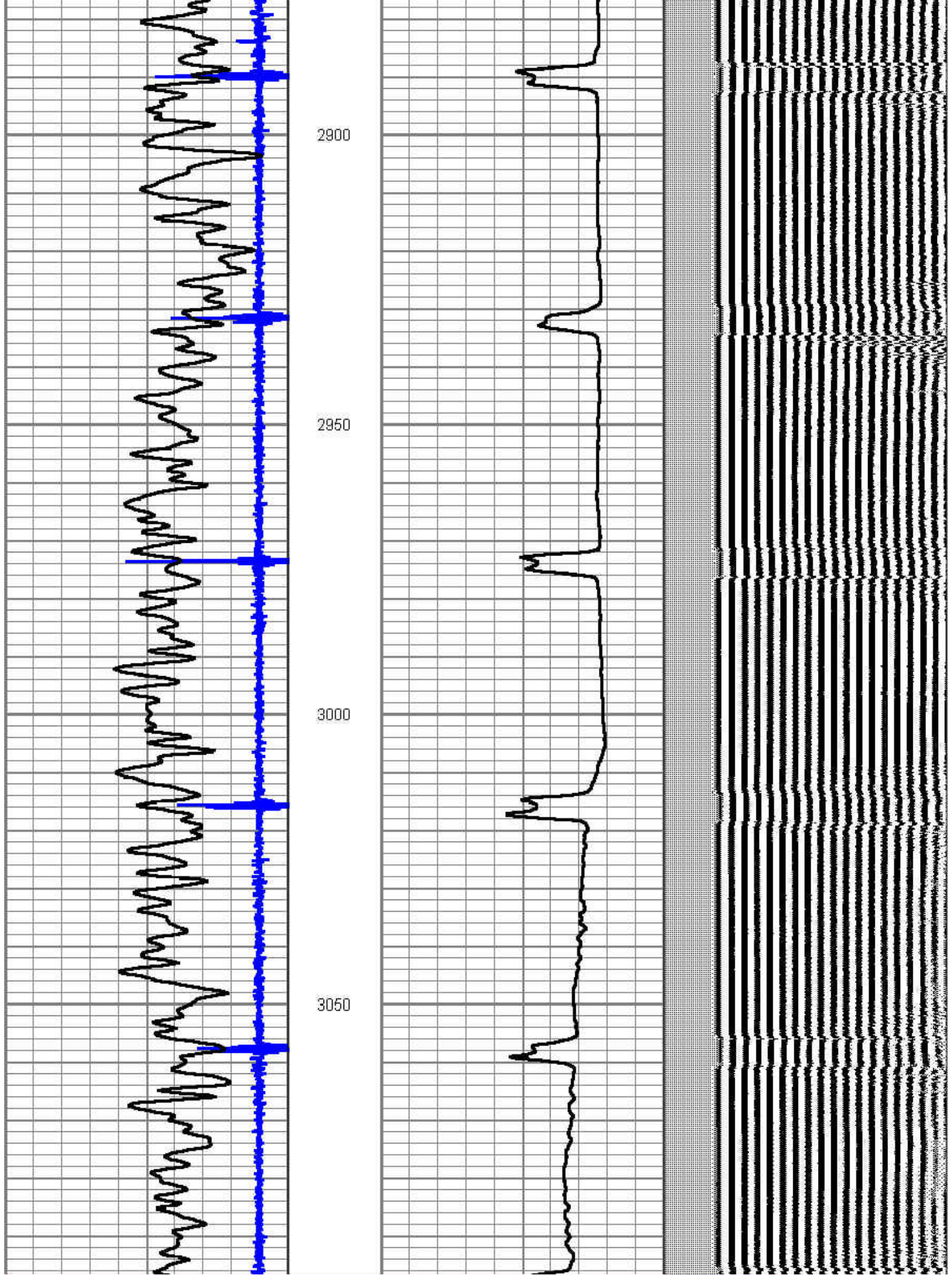
2700

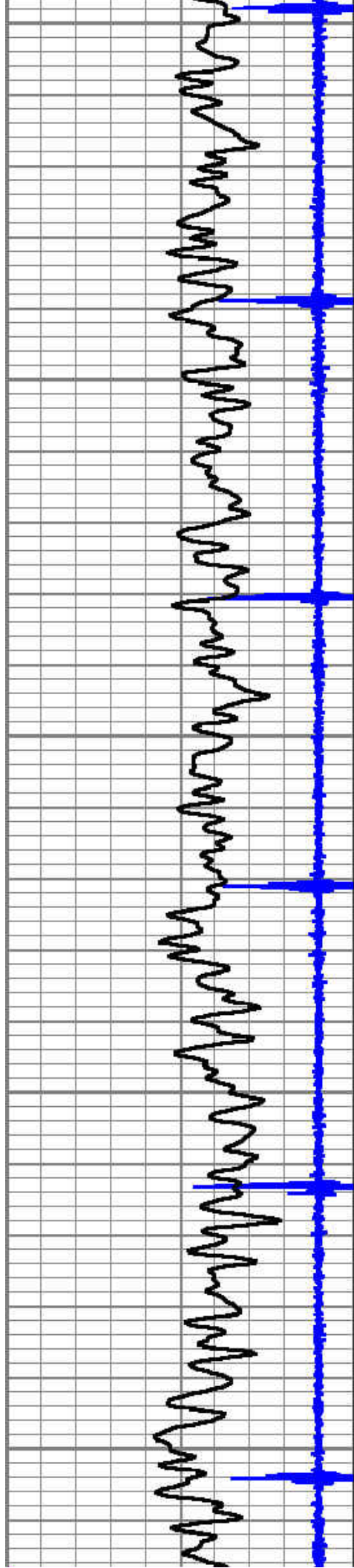
2750

2800

2850







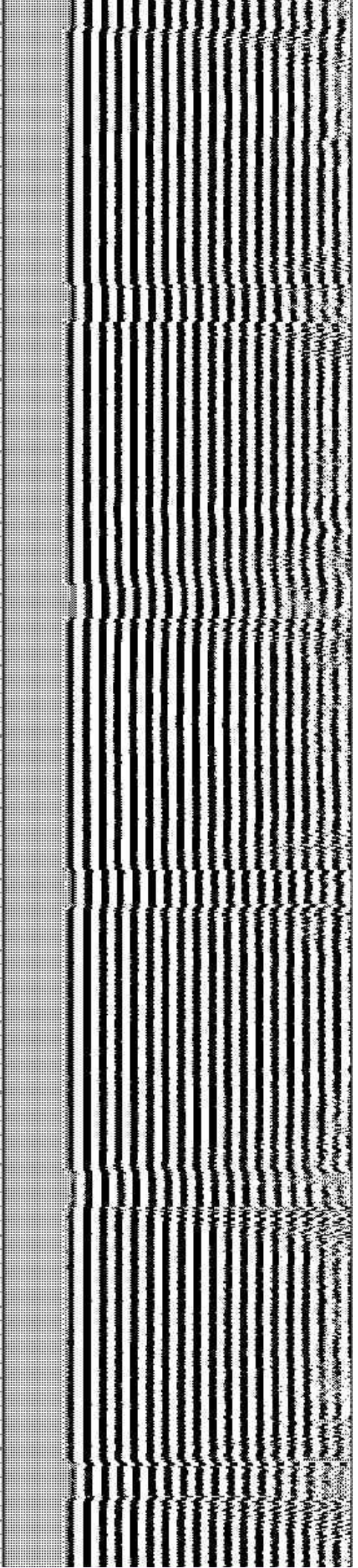
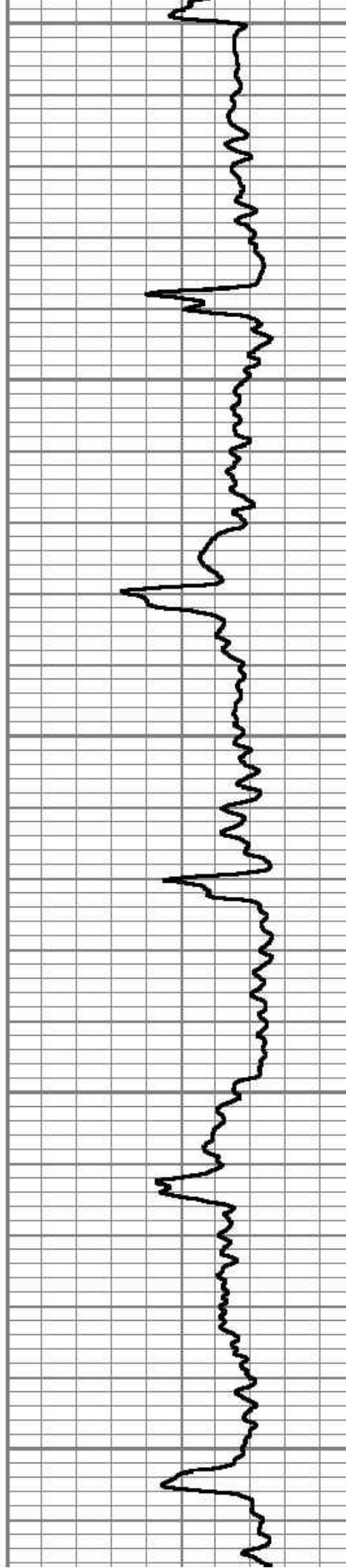
3100

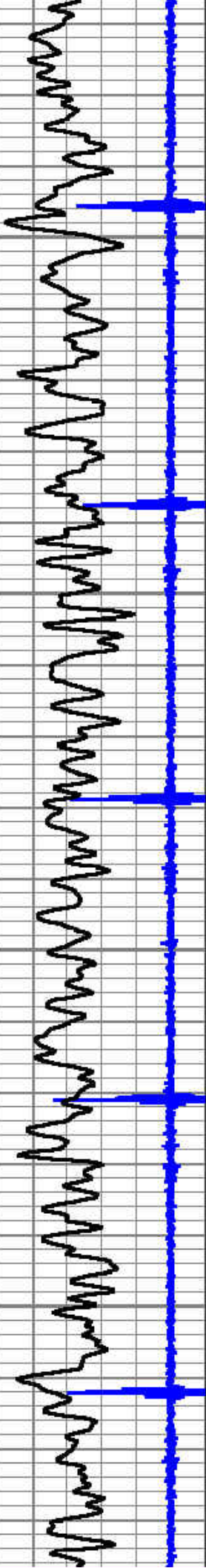
3150

3200

3250

3300



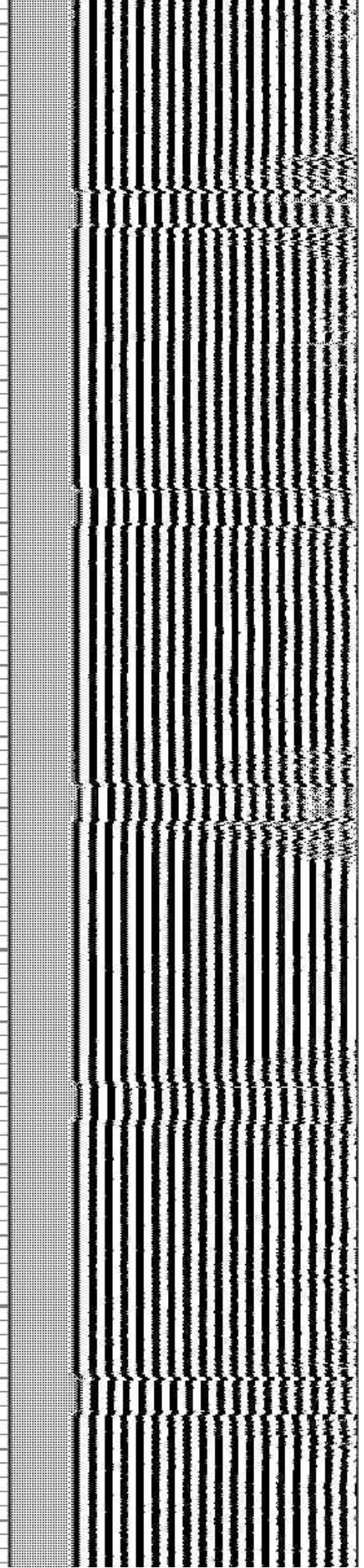


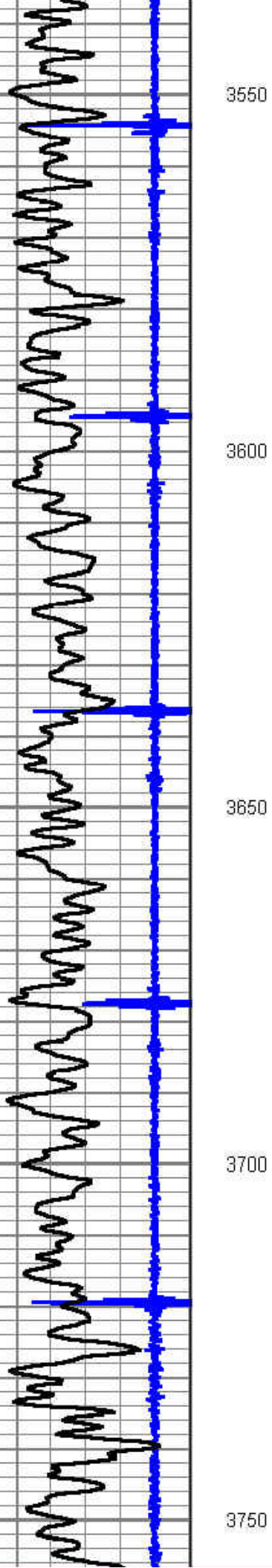
3350

3400

3450

3500





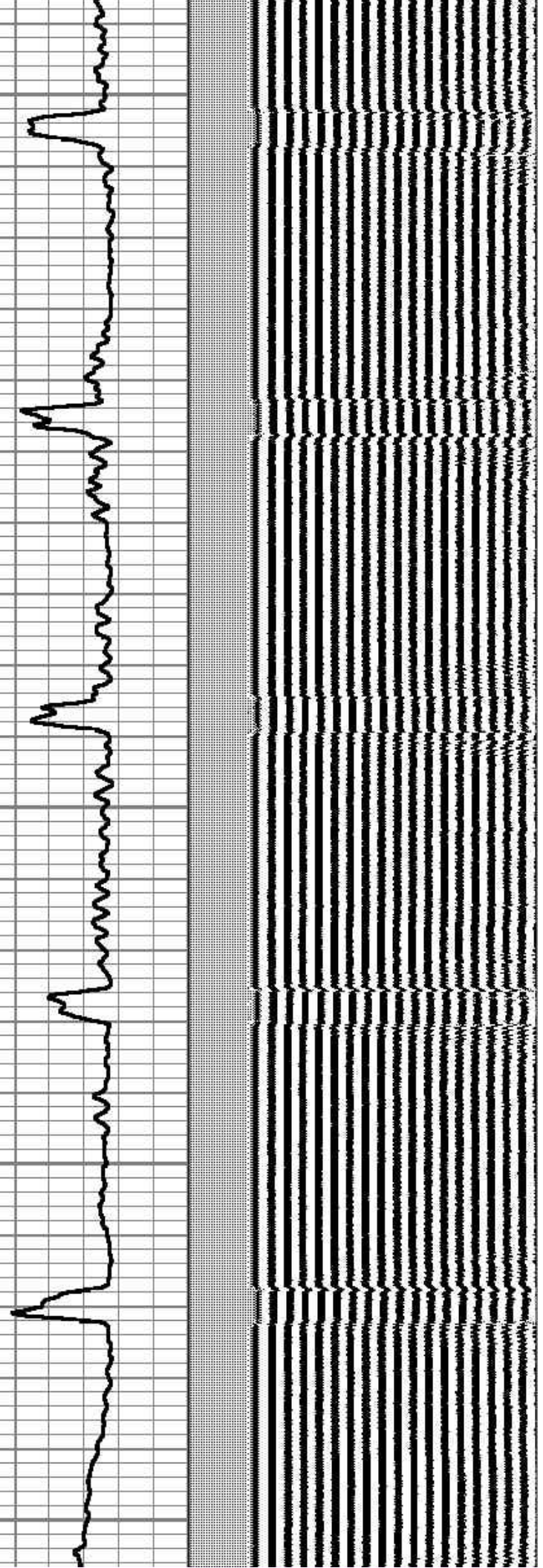
3550

3600

3650

3700

3750



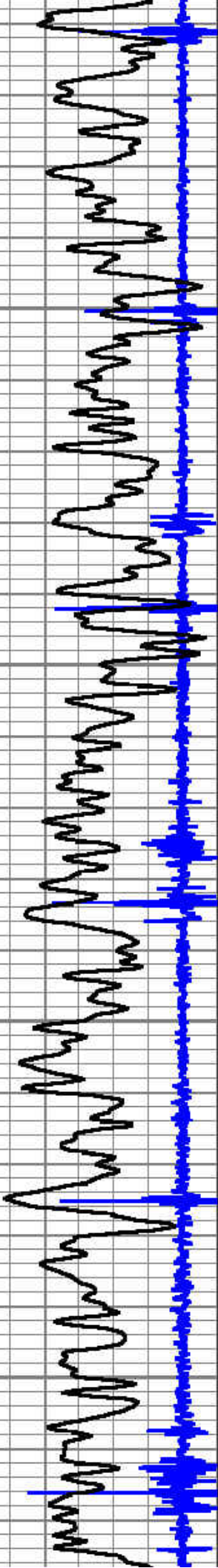
3550

3600

3650

3700

3750



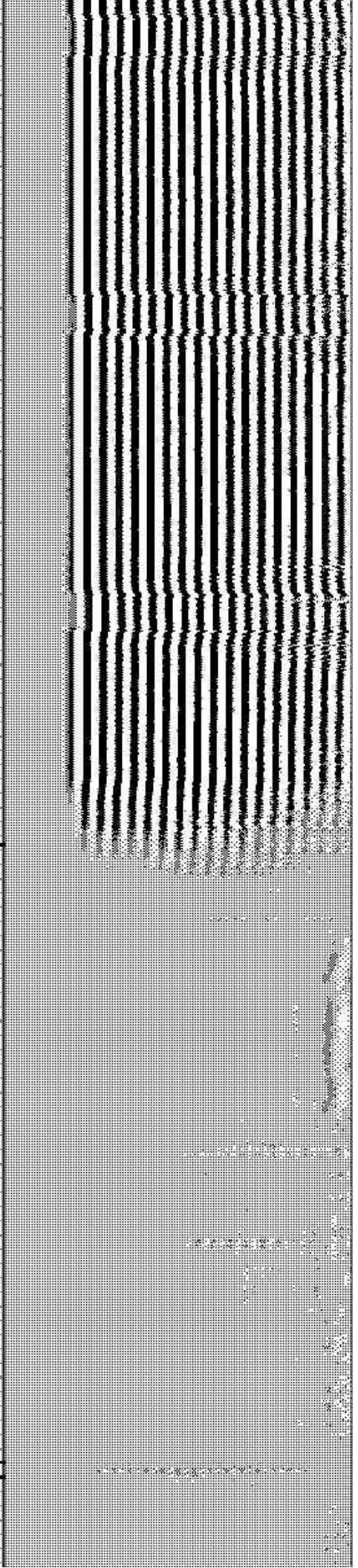
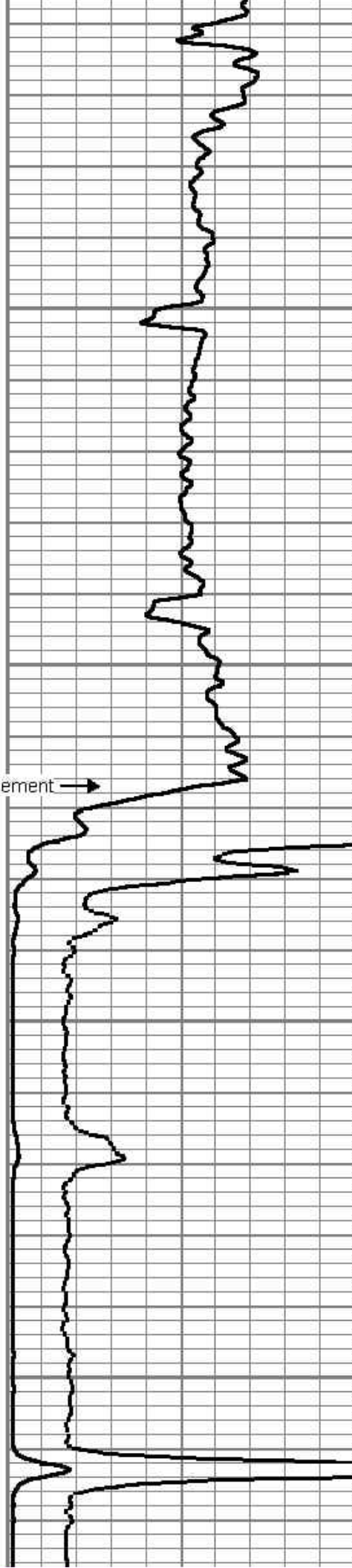
3800

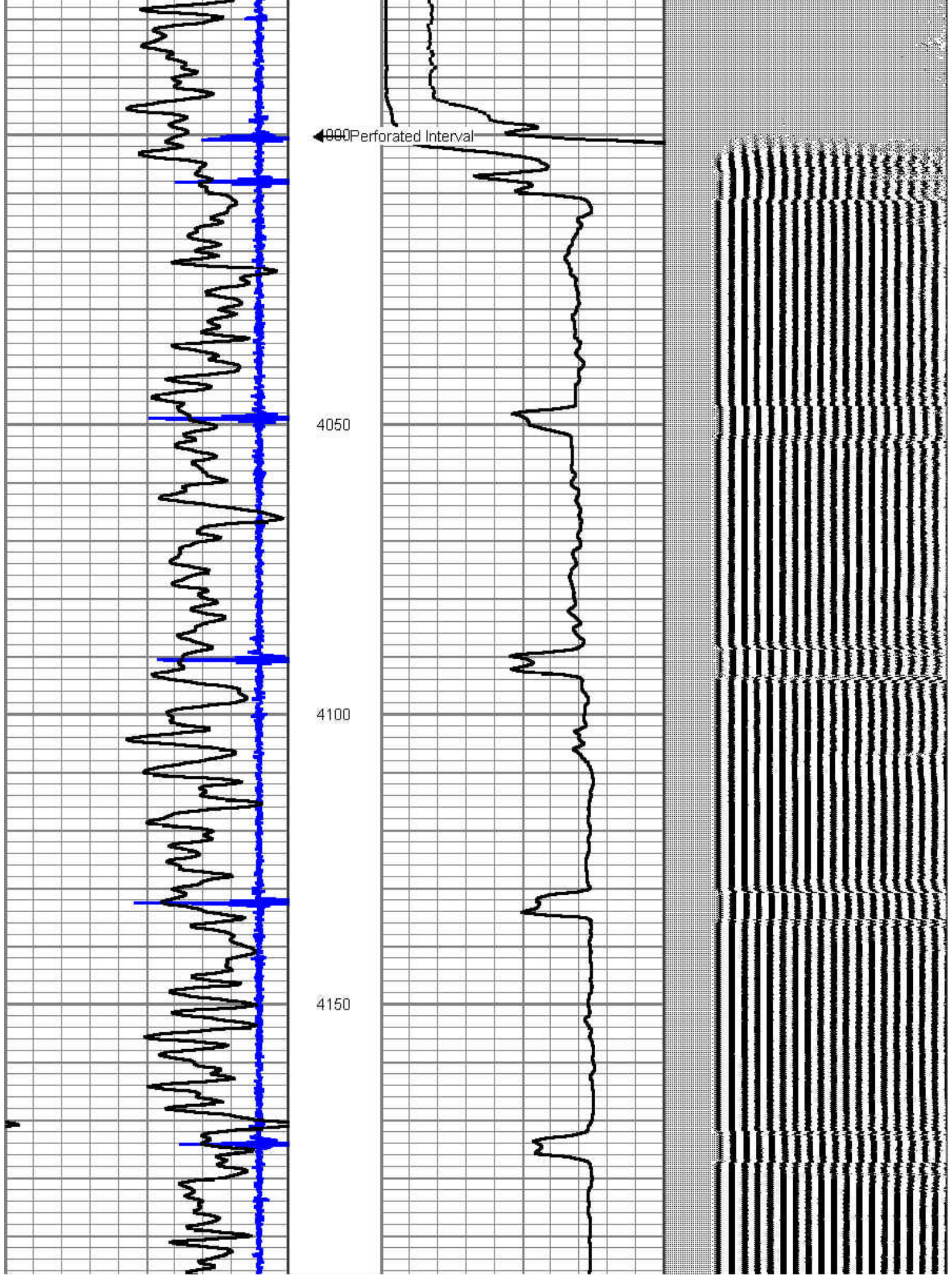
3850

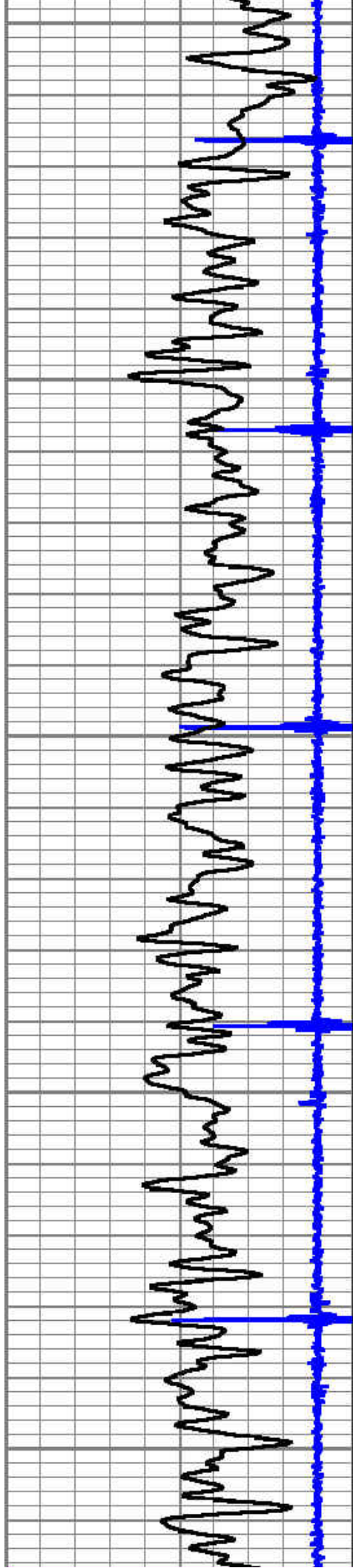
Top of Cement →

3900

3950







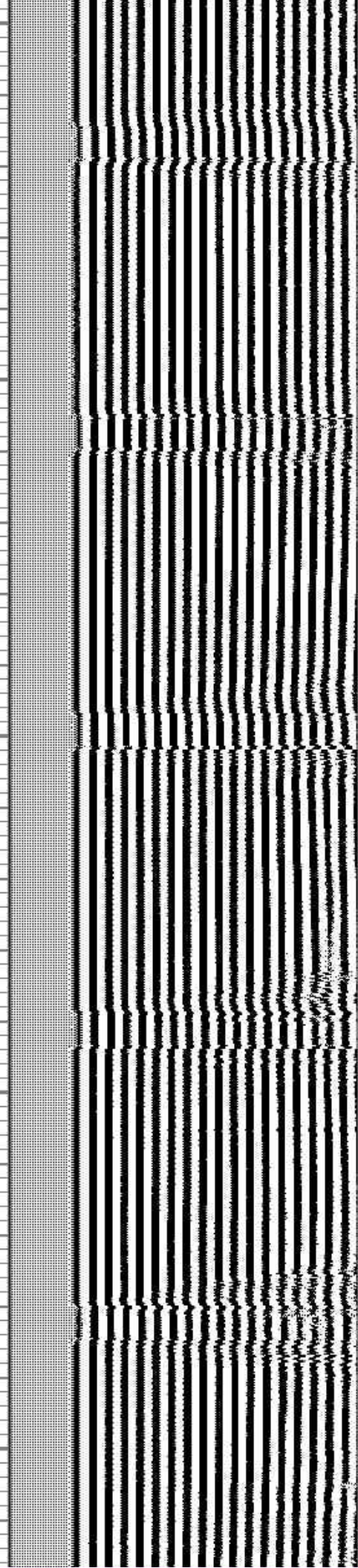
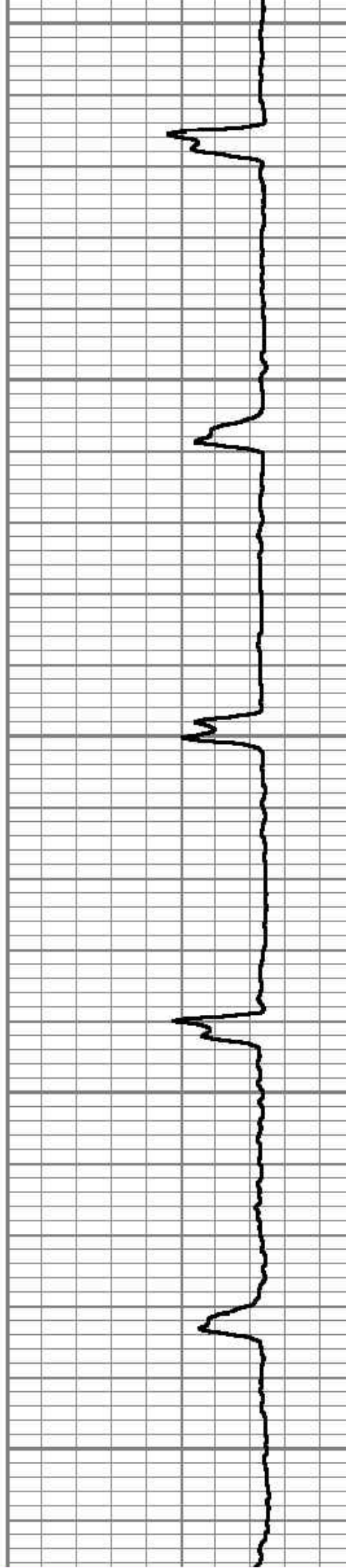
4200

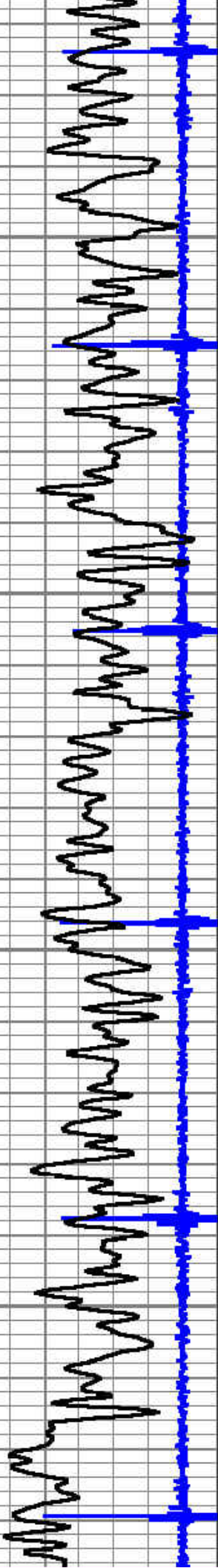
4250

4300

4350

4400



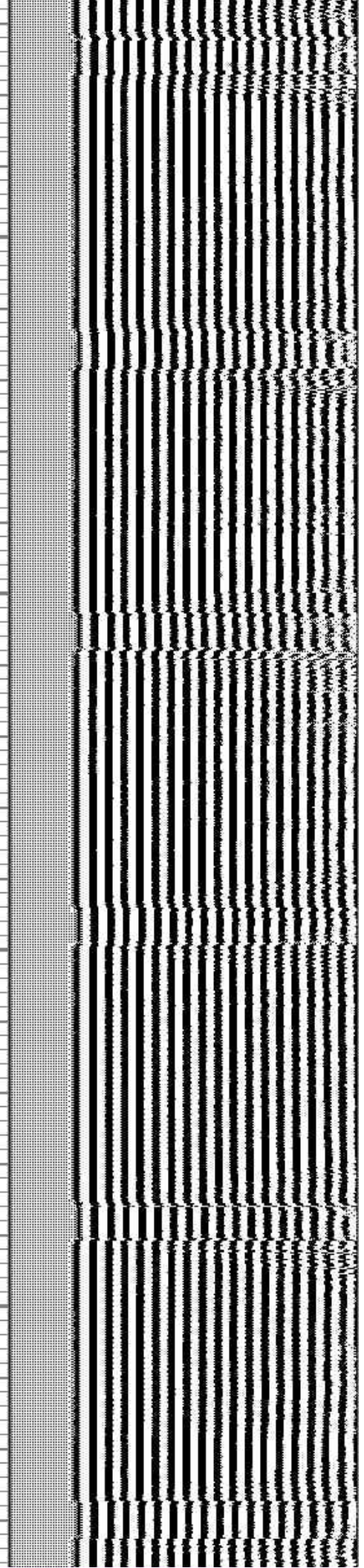
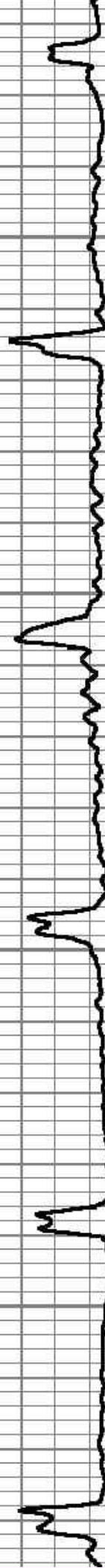


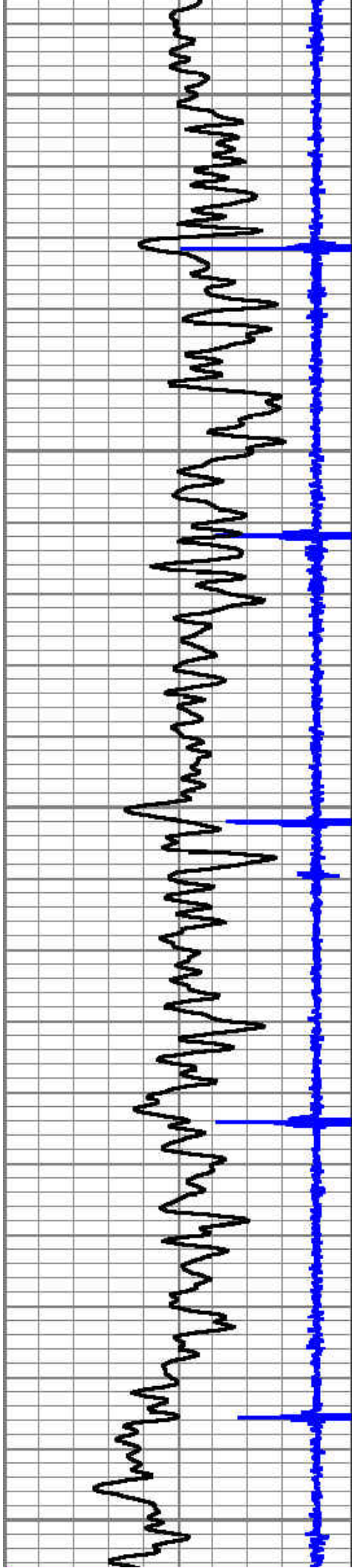
4450

4500

4550

4600





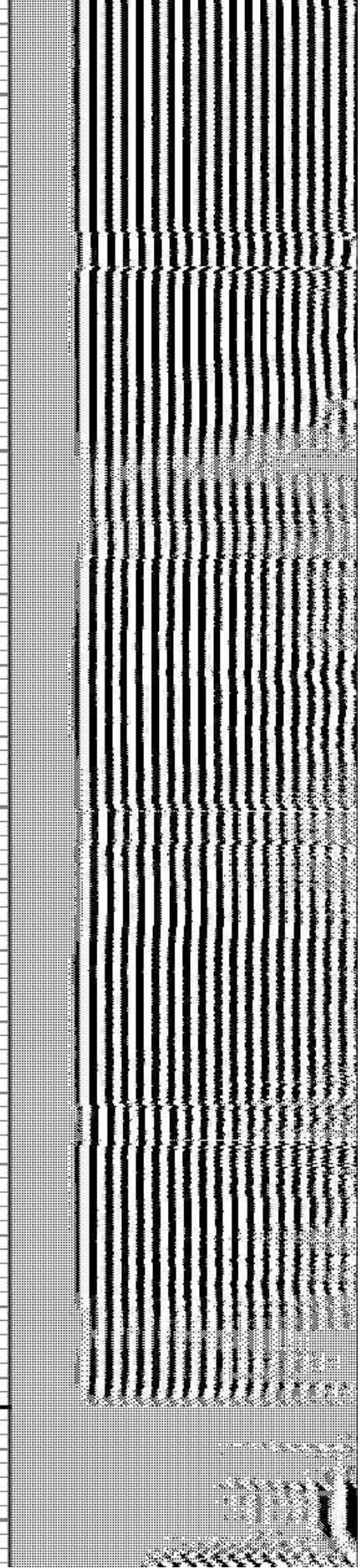
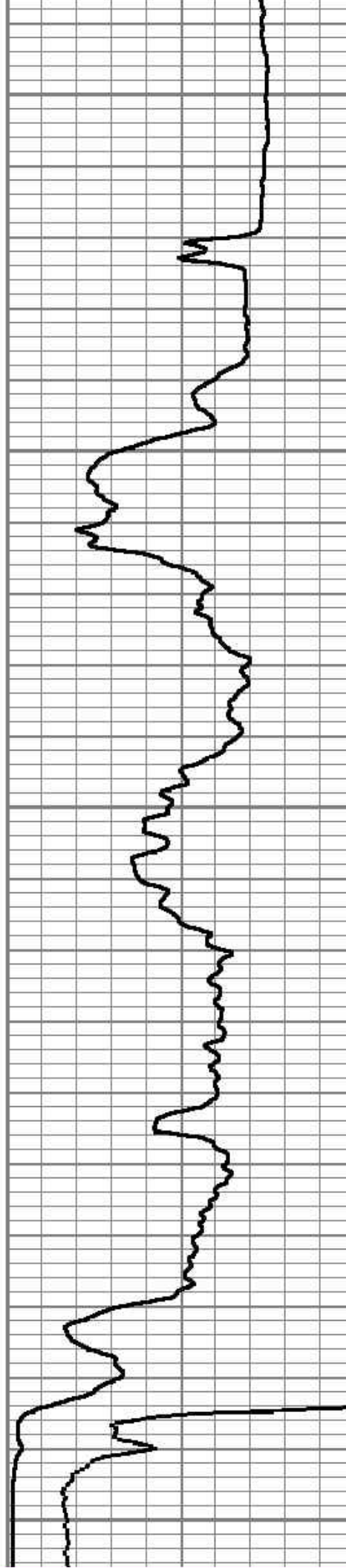
4650

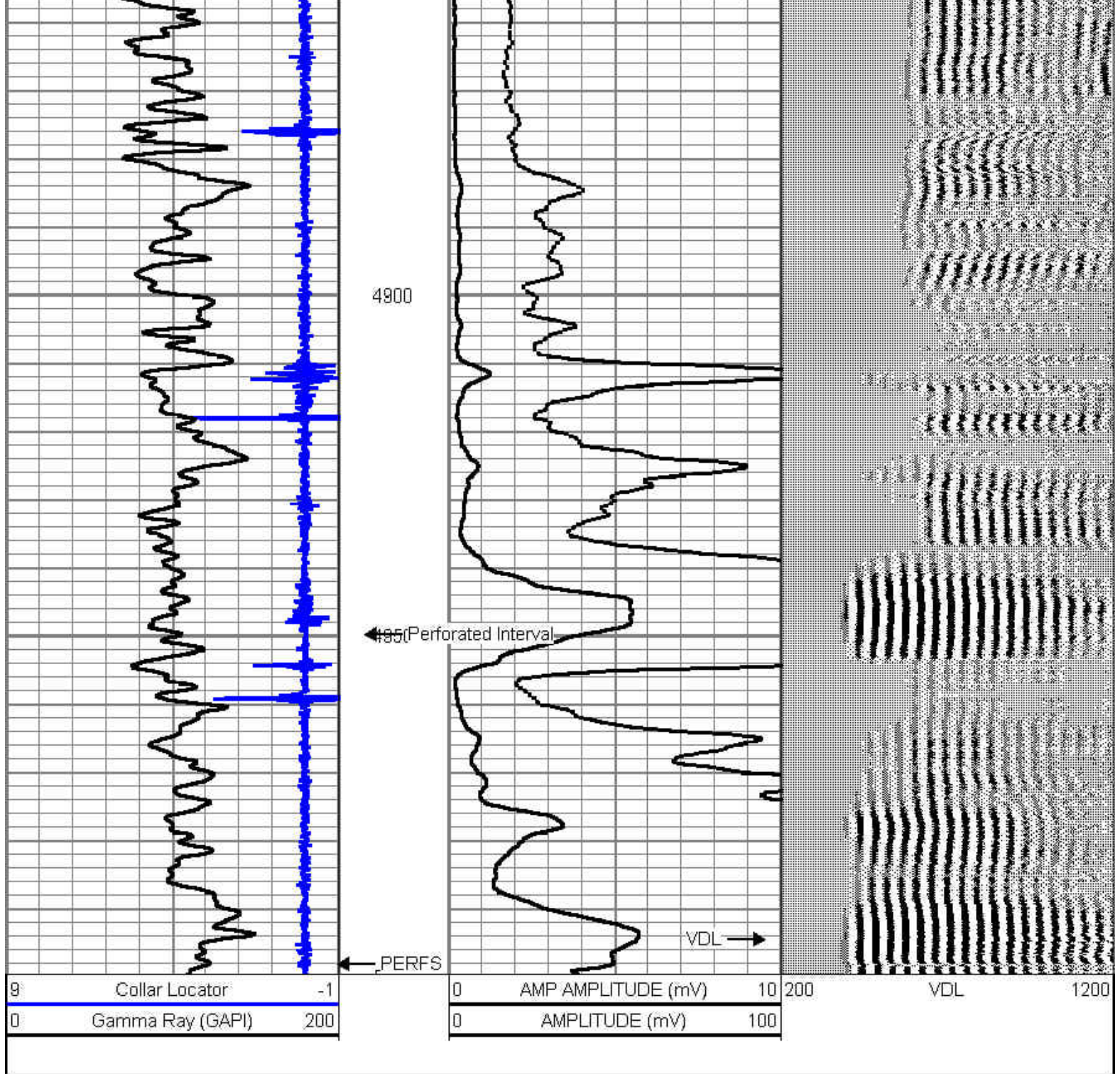
4700

4750

4800

4850





Calibration Report

Database File: ranchero_#1.db
 Dataset Pathname: pass6
 Dataset Creation: Thu Feb 27 14:31:54 2014 by Log SCH 120430

Gamma Ray Calibration Report

Serial Number:	130808	
Tool Model:	PROBE	
Performed:	Sun Jun 13 13:33:21 1993	
Calibrator Value:	1.0	GAPI
Background Reading:	0.0	cps
Calibrator Reading:	1.0	cps
Sensitivity:	1.0000	GAPI/cps

Temperature Calibration Report

Serial Number: 130608
 Tool Model: PROBE
 Performed: Sun Jun 13 13:33:21 1993

	Reference	Reading
Low Reference:	0.00 degF	0.00 cps
High Reference:	1.00 degF	1.00 cps
Gain:	1.00	
Offset:	0.00	
Delta Spacing	1	

Segmented Cement Bond Log Calibration Report

Serial Number: 4.5040904
 Tool Model: Probe
 Calibration Casing Diameter: 4.500 in
 Calibration Depth: 4503.714 ft

Master Calibration, performed Thu Feb 27 14:26:04 2014:

	Raw (v)		Calibrated (mv)		Results	
	Zero	Cal	Zero	Cal	Gain	Offset
3'	0.010	1.736	1.500	81.196	46.159	1.042
CAL	0.010	0.277				
5'	0.010	1.758	1.500	81.196	45.599	1.041
SUM						
S1	0.010	0.240	0.000	100.000	434.750	-4.256
S2	0.010	0.257	0.000	100.000	404.643	-4.075
S3	0.010	0.288	0.000	100.000	359.156	-3.604
S4	0.010	1.815	0.000	100.000	52.492	-0.542
S5	0.010	1.866	0.000	100.000	53.878	-0.556
S6	0.010	1.766	0.000	100.000	56.969	-0.587
S7	0.010	1.647	0.000	100.000	61.093	-0.606
S8	0.010	1.618	0.000	100.000	62.184	-0.641

Internal Reference Calibration, performed Wed Dec 31 17:00:00 1969:

	Raw (v)		Calibrated (v)		Results	
	Zero	Cal	Zero	Cal	Gain	Offset
CAL	0.000	0.000	0.010	0.277	1.000	0.000

Air Zero Calibration, performed Thu Feb 23 11:04:07 2012:

	Raw (v)	Calibrated (v)	Results
	Zero	Zero	Offset
3'	0.000	0.000	0.000
5'	0.000	0.000	0.000
SUM			
S1	0.000	0.000	0.000
S2	0.000	0.000	0.000
S3	0.000	0.000	0.000
S4	0.000	0.000	0.000
S5	0.000	0.000	0.000
S6	0.000	0.000	0.000
S7	0.000	0.000	0.000
S8	0.000	0.000	0.000

Sensor	Offset (ft)	Schematic	Description	Len (ft)	OD (in)	Wt (lb)
			PTS275	2.83	2.75	
			RBT-Probe (4.5040904) Prototype Probe Radil Bond Tool with Digital Telemetry	8.88	2.75	90.00
WWF3FT	11.78					
WWFCAL	11.78					
WWFS1	11.78					
WWFS2	11.78					
WWFS3	11.78					
WWFS4	11.78					
WWFS5	11.78					
WWFS6	11.78					
WWFS7	11.78					
WWFS8	11.78					
WWF5FT	10.78					
				PTS275	2.83	2.75
CCL	3.84					
TEMP	3.14					
GR	2.30		GCT-PROBE (130608) 56.3	4.69	2.75	100.00

Dataset: hobbs.db: field/well/run1/pass2
 Total Length: 19.23 ft
 Total Weight: 190.00 lb

OD

2.75 in