



Cement Bond, V.D.L.
Gamma-Ray, C.C.L. Log

Pioneer Energy Services

Company Augustus Energy Resources
Well Shiner 01-31
Field Wildcat
County Yuma State Colorado

Location: API #: 05125088610000

1928' FSL & 1116' FEL

SEC 31 TWP 5N RGE 45W

Permanent Datum GL Elevation 3881'
Log Measured From KB
Drilling Measured From KB

Other Services
none
Elevation
K.B. 3887'
D.F. 3886'
G.L. 3881'

Date 3-31-14

Run Number ONE
Depth Driller 2869'
Depth Logger 2800'
Bottom Logged Interval 2800'
Top Log Interval SURFACE
Open Hole Size 6.25"
Type Fluid WATER
Density / Viscosity NA
Max. Recorded Temp. 109
Estimated Cement Top 2132'
Time Well Ready ROA
Time Logger on Bottom AM
Equipment Number 1
Location FORT MORGAN
Recorded By JOHN HOLLIS
Witnessed By MR. JUSTIN STONE

Borehole Record
Run Number Bit From To Size Weight From To

Casing Record
Surface String Wgt/Ft Top Bottom
Prot. String
Production String 4.5" SURFACE 2869'
Liner

<<< Fold Here >>>

All interpretations are opinions based on inferences from electrical or other measurements and we cannot and do not guarantee the accuracy or correctness of any interpretation, and we shall not, except in the case of gross or willful negligence on our part, be liable or responsible for any loss, costs, damages, or expenses incurred or sustained by anyone resulting from any interpretation made by any of our officers, agents or employees. These interpretations are also subject to our general terms and conditions set out in our current Price Schedule.

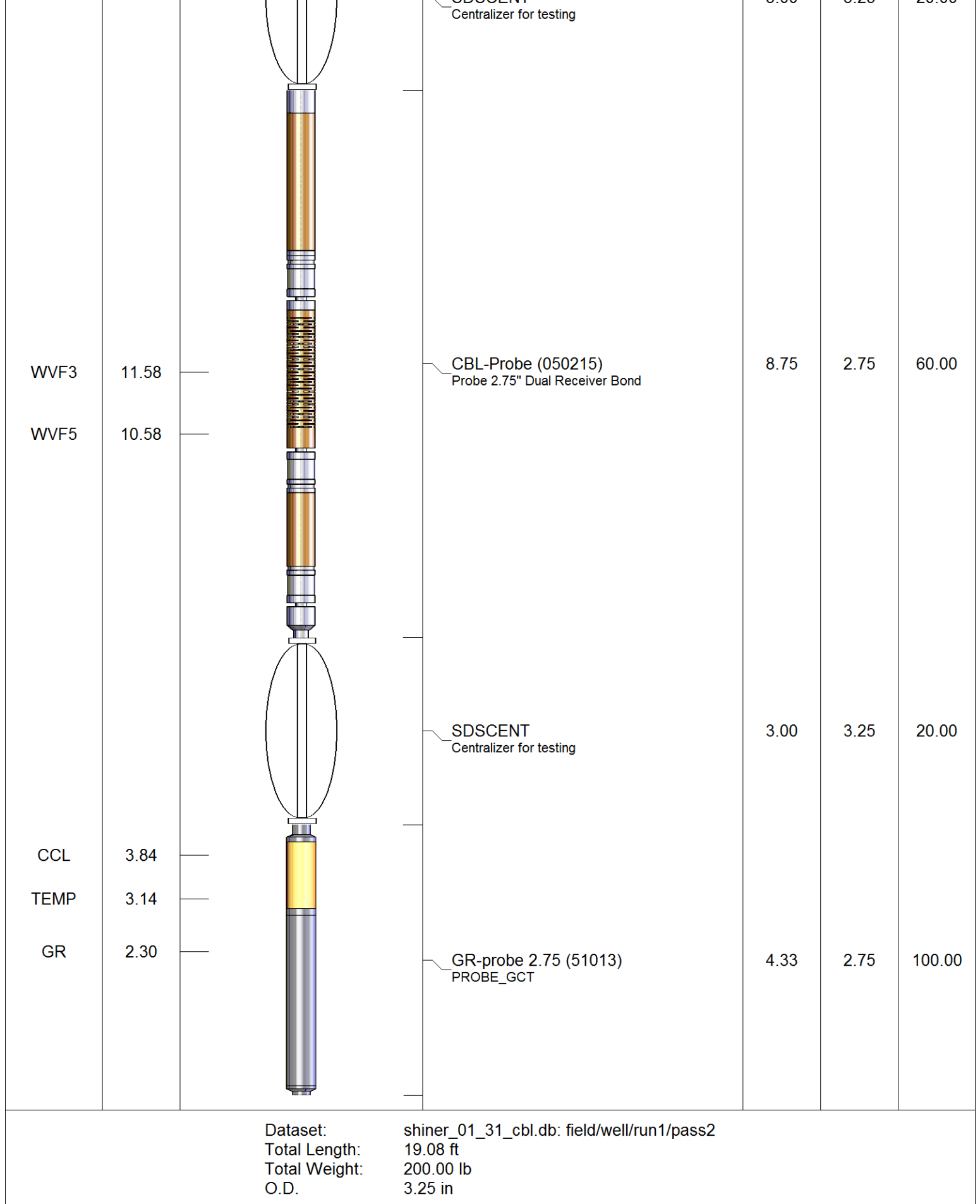
Comments

S.O.# 2-260006

CORRALATED TO OPEN HOLE LOG

THANK YOU FOR USING PIONEER ENERGY SERVICES

Sensor	Offset (ft)	Schematic	Description	Len (ft)	OD (in)	Wt (lb)
			SDSCENT	3.00	3.25	20.00

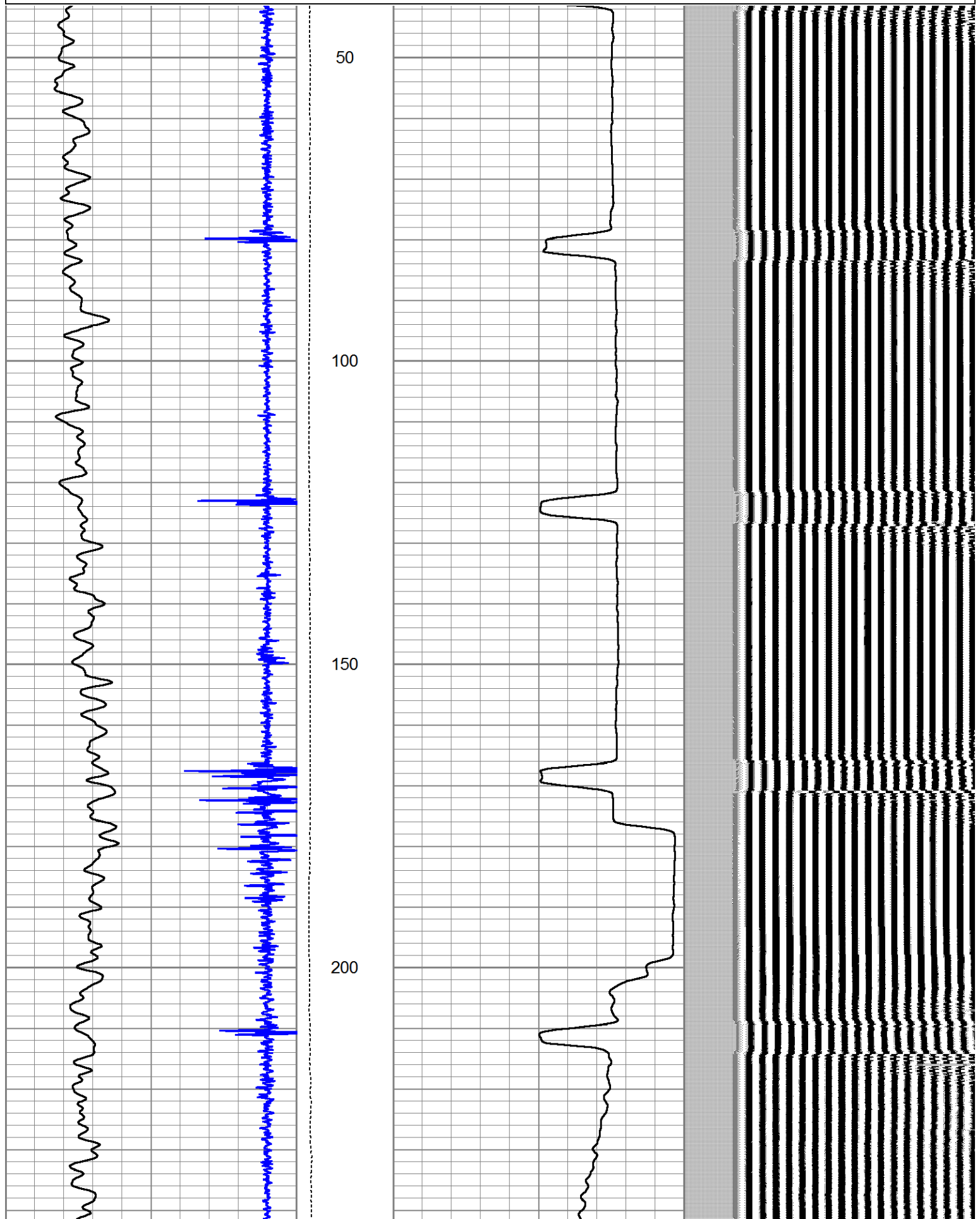


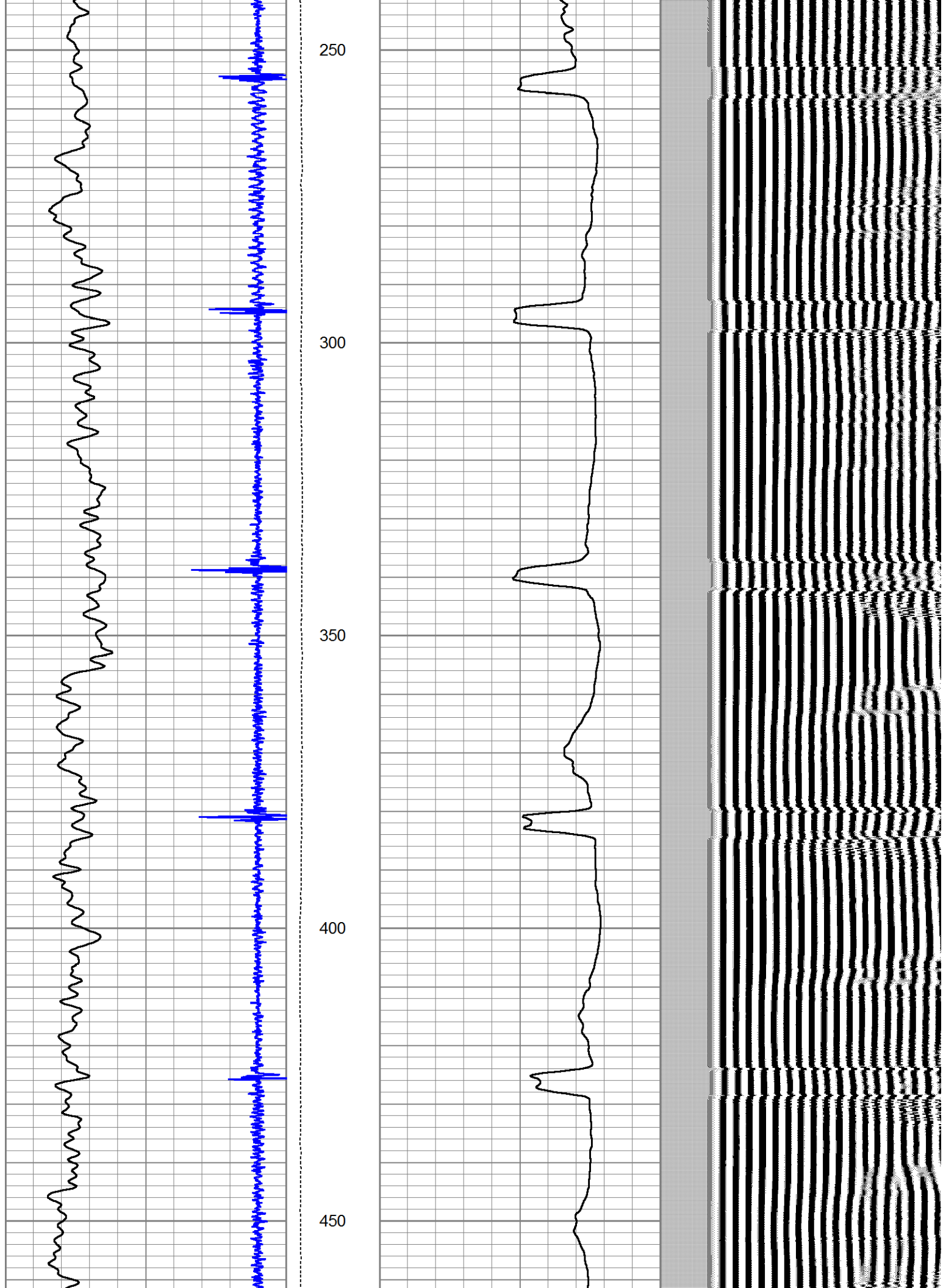
Database File: shiner_01_31_cbl.db
 Dataset Pathname: pass2
 Presentation Format: cbl_dr
 Dataset Creation: Mon Mar 31 13:39:01 2014 by Log 7.0 B1
 Charted by: Depth in Feet scaled 1:240

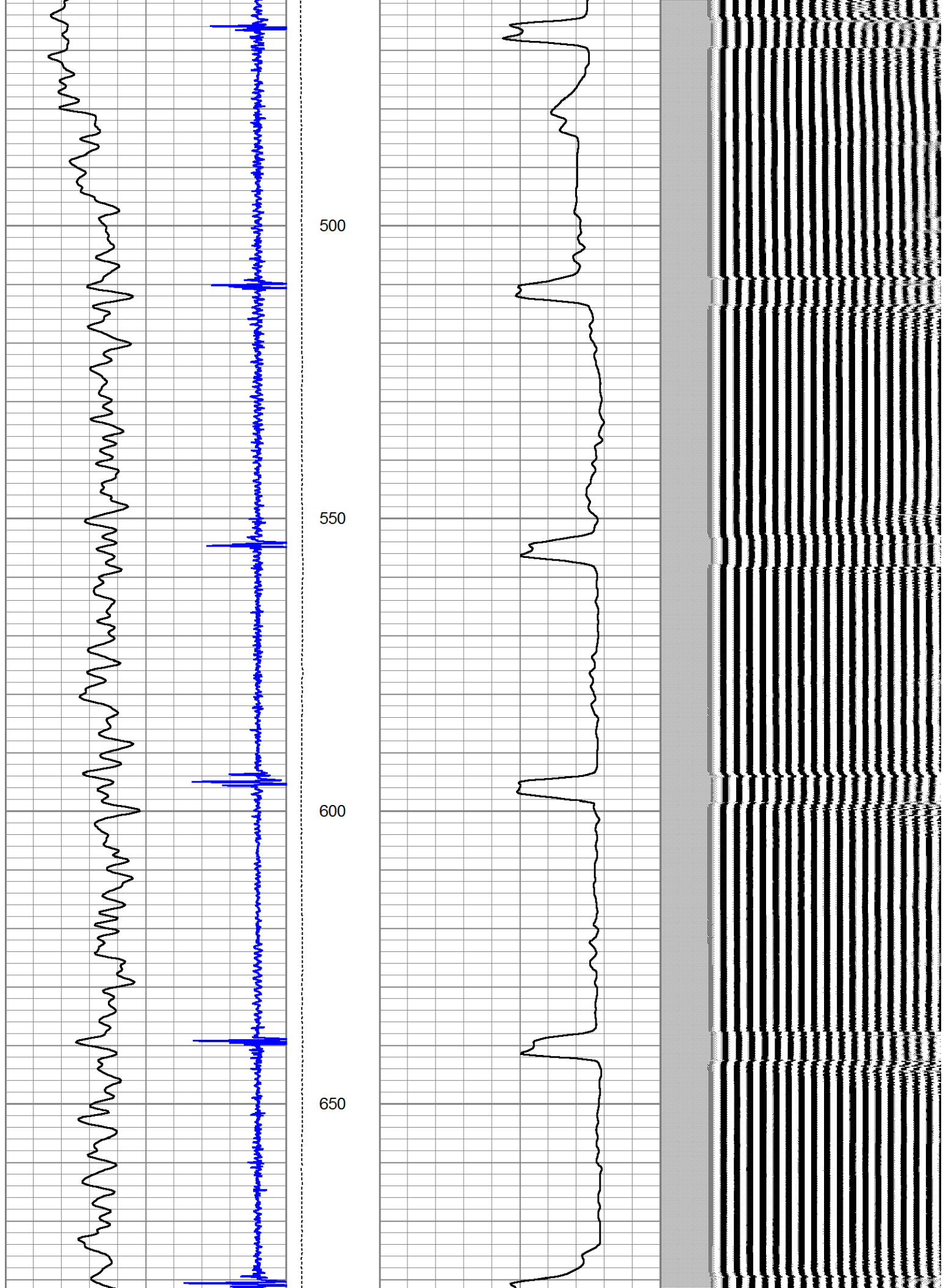
Charted by:

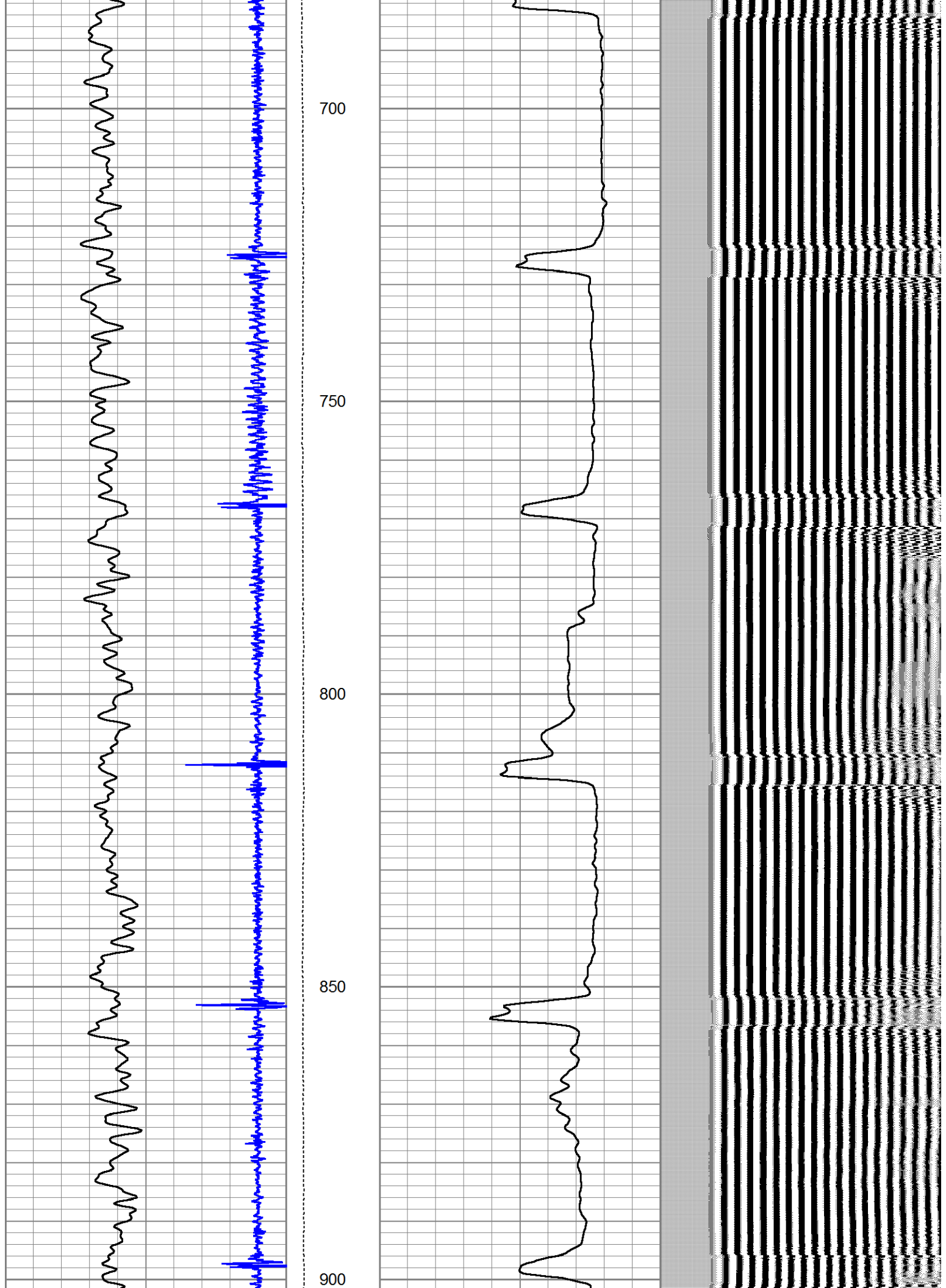
Depth in Feet scaled 1.240

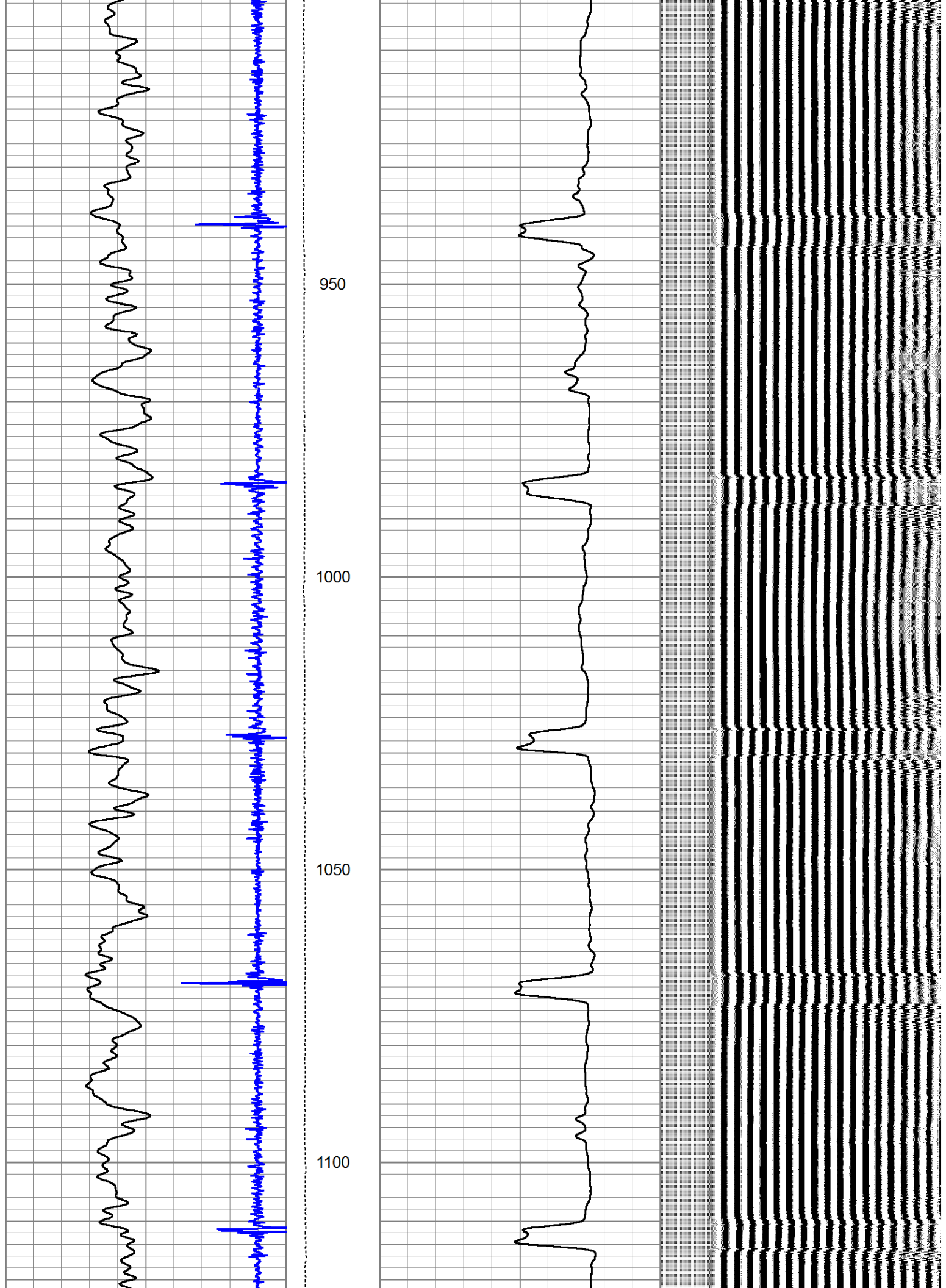
9	Collar Locator	-1	LTEN	0	Amplified Amplitude (mV)	10	200	Variable Density	1200
0	Gamma Ray (GAPI)	300	0 (lb'2000	0	Amplitude (mV)	100			

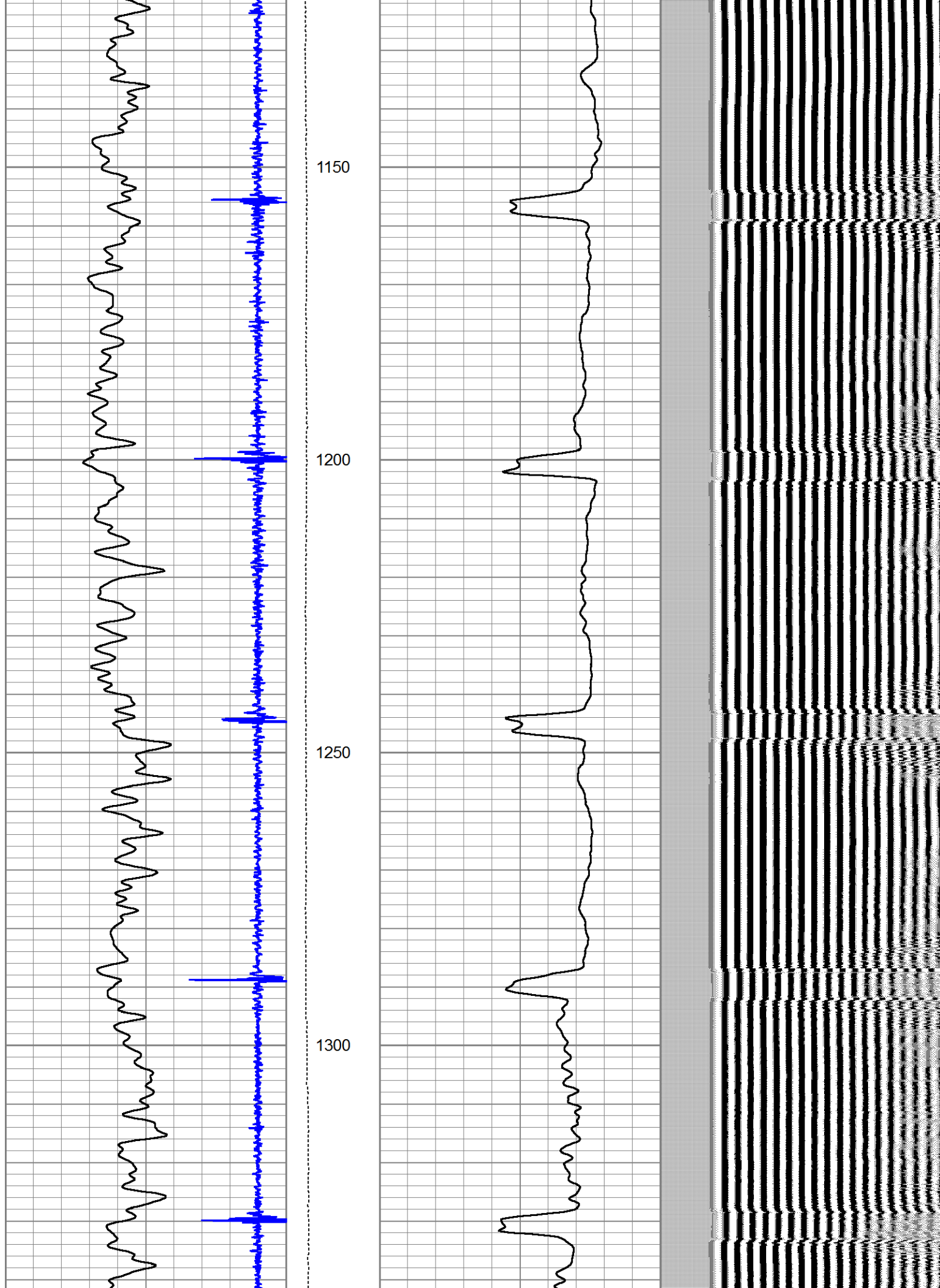


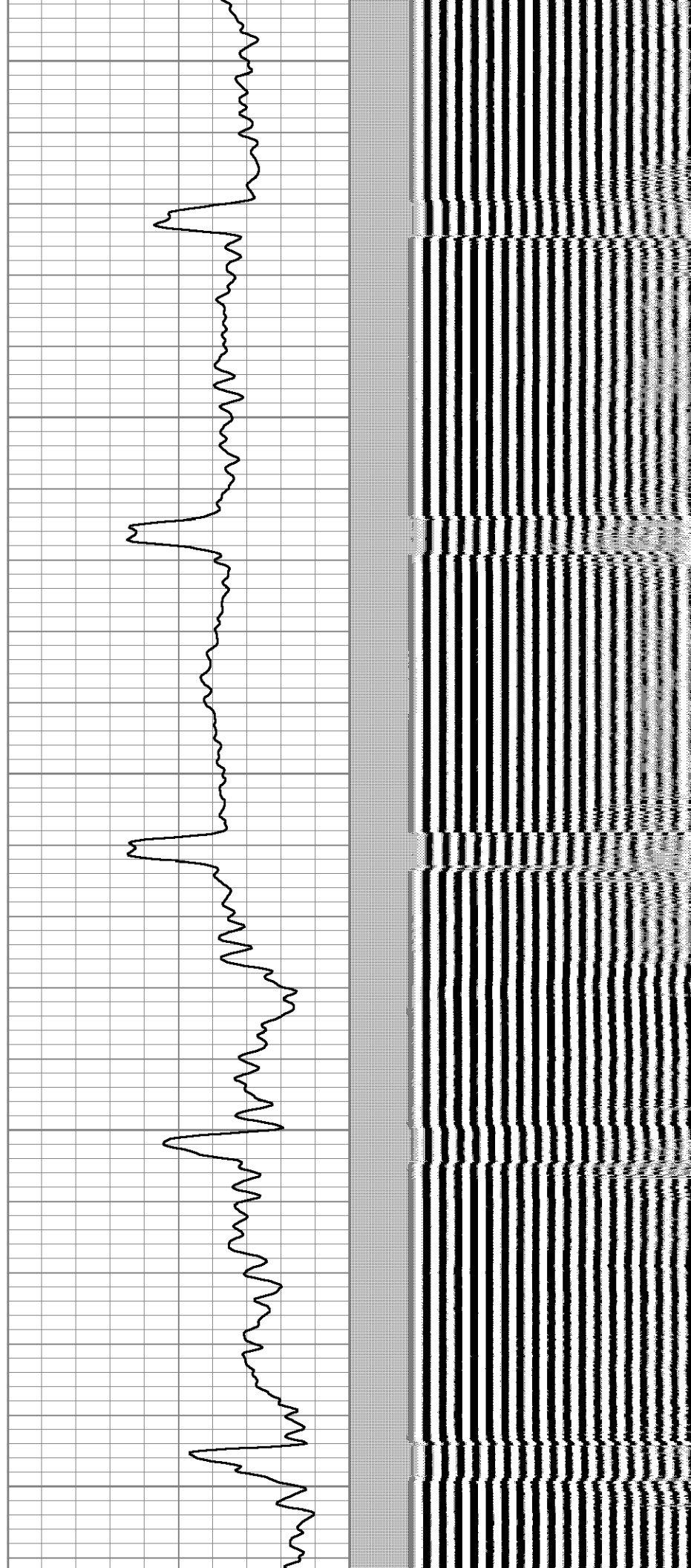
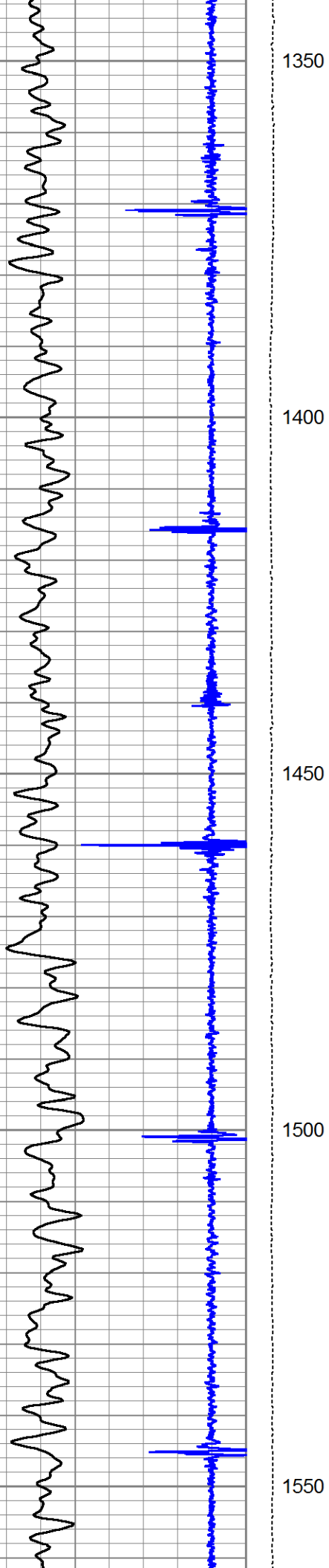


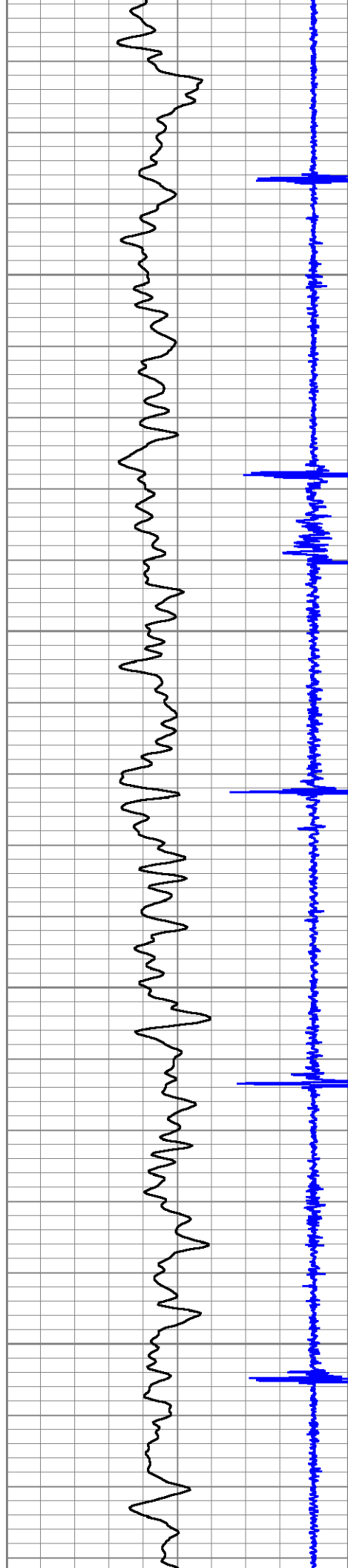












1600

1650

1700

1750

