

## LEGEND:

PROPOSED LOCATION

## GREAT WESTERN OIL & GAS COMPANY

RAINDANCE FD 19-237HC, 19-239HN, 20-221HN,  
 20-222HN, 20-223HC & 20-226HN  
 SECTION 30, T6N, R67W, 6th P.M.  
 SE 1/4 SE 1/4



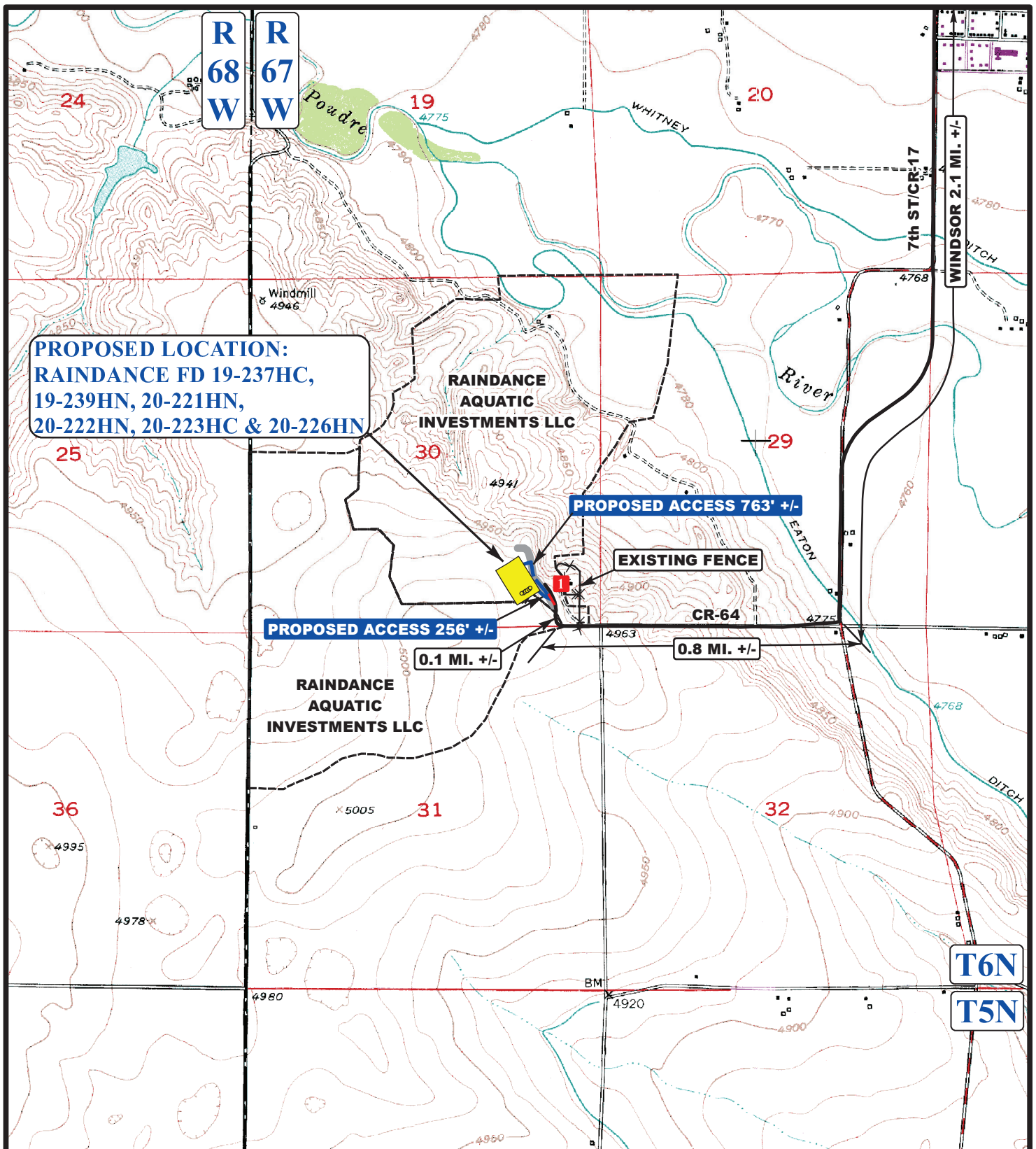
**Utah Engineering & Land Surveying**  
 85 South 200 East Vernal, Utah 84078  
 (435) 789-1017 \* FAX (435) 789-1813

**ACCESS ROAD  
 MAP**

**07 17 13**  
 MONTH DAY YEAR

SCALE: 1:100,000 DRAWN BY: J.L.H. REV: 10-24-13 J.L.G.





**PROPOSED LOCATION:**  
**RAINDANCE FD 19-237HC,**  
**19-239HN, 20-221HN,**  
**20-222HN, 20-223HC & 20-226HN**

# **LEGEND:**

- EXISTING ROADS
- PROPOSED ACCESS ROAD
- × × × × × EXISTING FENCE
- 1 18" CMP REQUIRED

## **GREAT WESTERN OIL & GAS COMPANY**

**RAINDANCE FD 19-237HC, 19-239HN, 20-221HN,**  
**20-222HN, 20-223HC & 20-226HN**  
**SECTION 30, T6N, R67W, 6th P.M.**  
**SE 1/4 SE 1/4**



**Utah Engineering & Land Surveying**  
 85 South 200 East Vernal, Utah 84078  
 (435) 789-1017 \* FAX (435) 789-1813



**ACCESS ROAD**  
**MAP**

**07** **17** **13**  
 MONTH DAY YEAR

SCALE: 1"=2000' DRAWN BY: J.L.H. REV: 10-24-13 J.L.G.





T6N

30

PROPOSED LOCATION:  
RAINDANCE FD 19-237HC,  
19-239HN, 20-221HN,  
20-222HN, 20-223HC & 20-226HN

3,702'

770'

414'

CR-64

R  
68  
W

R  
67  
W

LEGEND:

EXISTING ROADS



GREAT WESTERN OIL & GAS COMPANY

AERIAL TOPO  
SECTION 30, T6N, R67W, 6th P.M.



Uintah Engineering & Land Surveying  
85 South 200 East Vernal, Utah 84078  
(435) 789-1017 \* FAX (435) 789-1813

ACCESS ROAD  
MAP

08 01 13  
MONTH DAY YEAR

SCALE: 1"=2000' DRAWN BY: J.L.H. REV: 10-24-13 J.L.G.

B  
TOPO