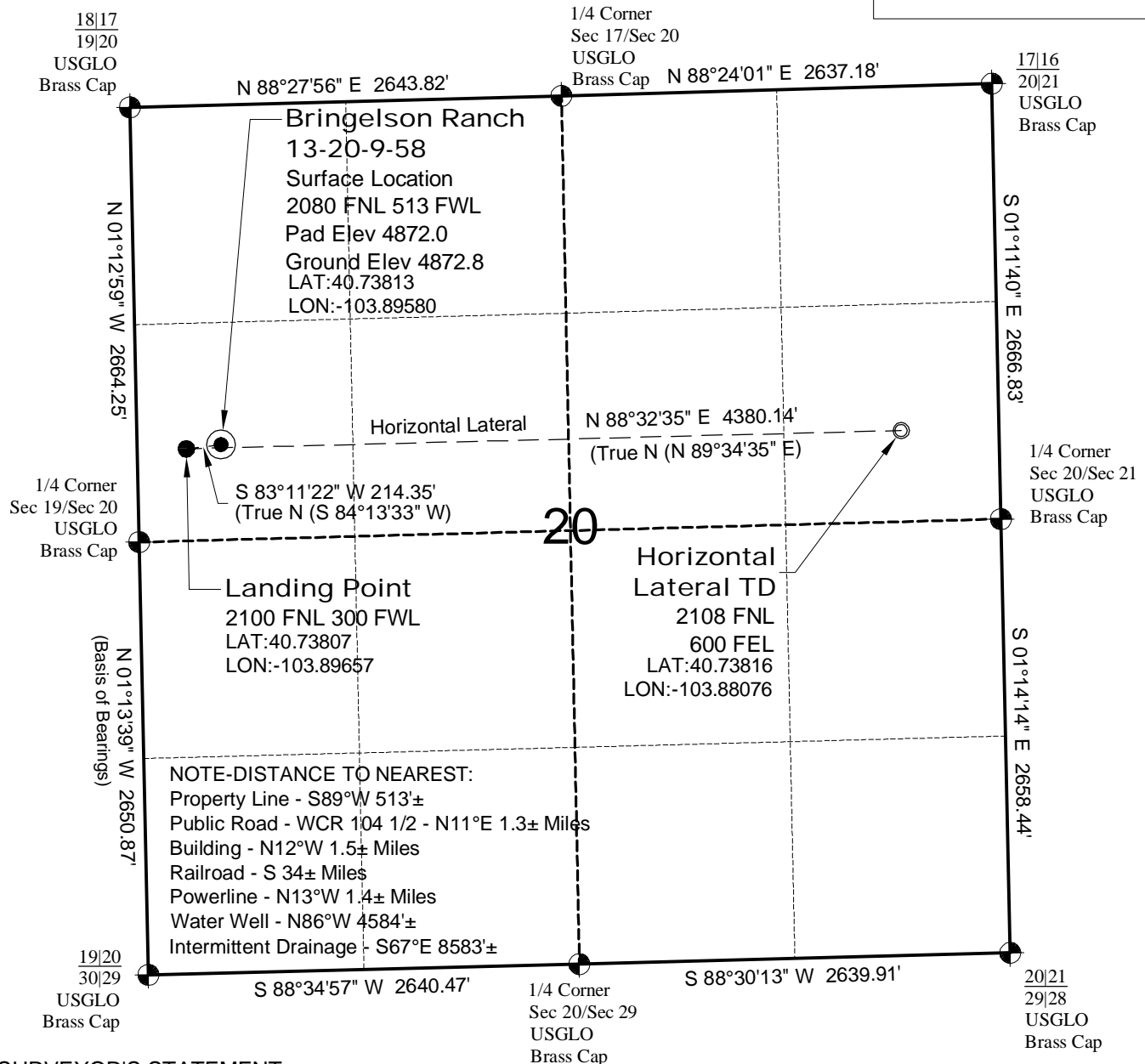


WELL LOCATION MAP

**BRINGELSON RANCH
13-20-9-58 PAD**

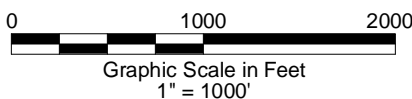
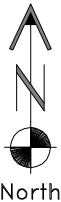


SURVEYOR'S STATEMENT

The undersigned hereby states that the well location shown hereon was staked on the ground based on existing monumentation and/or physical evidence found in the field and is correct to the best of my knowledge, information and belief.

NOTES

- 1.) Horizontal (NAD 83) and vertical (NAVD 88) datum is based on the Leica Geosystems SmartNet of Colorado.
 - 2.) All directions, distances, and dimensions shown hereon are based on coordinates from the "Colorado coordinate system of 1983 north zone" (article 52 of title 38, C.R.S.).
 - 3.) All section line dimensions shown hereon are based on field measurements of existing monuments and/or physical evidence found in the field unless otherwise indicated.
 - 4.) Physical features shown hereon are for graphical representation only.
 - 5.) See Form 2A for visible improvements within 500' of wellhead.
 - 6.) Distances to nearest section lines are measured perpendicularly.
 - 7.) This is not a land survey nor land survey plat.
 - 8.) Date of Survey 3/6/14; Date of Drawing 3/25/14. REV 0
- PDOP Reading: 2.2 Instrument Operator: Eric Purcell



**CARRIZO NIOBRARA LLC
BRINGELSON RANCH 13-20-9-58**

**SL SW1/4 NW1/4 SEC.20 T9N R58W
HL TD SE1/4 NE1/4 SEC.20 T9N R58W
6th PM WELD COUNTY COLORADO**