

The Road to Excellence Starts with Safety

Sold To #: 300721		Ship To #: 3112114		Quote #:		Sales Order #: 900824477							
Customer: WPX ENERGY ROCKY MOUNTAIN LLC-EBUS				Customer Rep: Brunk, Mike									
Well Name: RWF			Well #: 11-35		API/UWI #: 05-045-21843								
Field: RULISON		City (SAP): RIFLE		County/Parish: Garfield		State: Colorado							
Lat: N 39.486 deg. OR N 39 deg. 29 min. 9.168 secs.				Long: W 107.861 deg. OR W -108 deg. 8 min. 21.84 secs.									
Contractor: CYCLONE 17			Rig/Platform Name/Num: 17										
Job Purpose: Cement Surface Casing													
Well Type: Development Well				Job Type: Cement Surface Casing									
Sales Person: MAYO, MARK				Srvc Supervisor: PONDER, THOMAS		MBU ID Emp #: 427112							
<b>Job Personnel</b>													
HES Emp Name		Exp Hrs	Emp #	HES Emp Name		Exp Hrs	Emp #	HES Emp Name		Exp Hrs	Emp #		
ANDERSON, ADAM S		0.0	456683	LYNGSTAD, FREDRICK D		0.0	403742	PONDER, THOMAS Lynn		0.0	427112		
<b>Equipment</b>													
HES Unit #	Distance-1 way	HES Unit #	Distance-1 way	HES Unit #	Distance-1 way	HES Unit #	Distance-1 way						
10248065	60 mile	10784080	60 mile	10872429	60 mile	11360883	60 mile						
11583931	60 mile	11808833	60 mile										
<b>Job Hours</b>													
Date	On Location Hours	Operating Hours	Date	On Location Hours	Operating Hours	Date	On Location Hours	Operating Hours					
10/19/2013	8	2											
<b>TOTAL</b>		<i>Total is the sum of each column separately</i>											
<b>Job</b>					<b>Job Times</b>								
Formation Name					Date		Time	Time Zone					
Formation Depth (MD)	Top	Bottom		Called Out		18 - Oct - 2013	23:00	MST					
Form Type	BHST			On Location		19 - Oct - 2013	03:00	MST					
Job depth MD	1158. ft		Job Depth TVD	1158. ft		Job Started	19 - Oct - 2013	08:57	MST				
Water Depth	Wk Ht Above Floor			5. ft		Job Completed	19 - Oct - 2013	09:56	MST				
Perforation Depth (MD)	From	To		Departed Loc		19 - Oct - 2013	11:00	MST					
<b>Well Data</b>													
Description	New / Used	Max pressure psig	Size in	ID in	Weight lbm/ft	Thread	Grade	Top MD ft	Bottom MD ft	Top TVD ft	Bottom TVD ft		
<b>Tools and Accessories</b>													
Type	Size	Qty	Make	Depth	Type	Size	Qty	Make	Depth	Type	Size	Qty	Make
Guide Shoe	9 5/8	1	WTF	1158	Packer					Top Plug	9 5/8	1	HES
Float Shoe					Bridge Plug					Bottom Plug			
Float Collar	9 5/8	1	WTF	1120	Retainer					SSR plug set			
Insert Float										Plug Container	9 5/8	1	HES
Stage Tool										Centralizers			
<b>Miscellaneous Materials</b>													
Gelling Agt		Conc		Surfactant		Conc		Acid Type		Qty		Conc	%
Treatment Fld		Conc		Inhibitor		Conc		Sand Type		Size		Qty	
<b>Fluid Data</b>													
Stage/Plug #: 1													
Fluid #	Stage Type	Fluid Name			Qty	Qty uom	Mixing Density lbm/gal	Yield ft3/sk	Mix Fluid Gal/sk	Rate bbl/min	Total Mix Fluid Gal/sk		
Stage/Plug #: 1													
Fluid #	Stage Type	Fluid Name			Qty	Qty uom	Mixing Density uom	Yield uom	Mix Fluid uom	Rate uom	Total Mix Fluid uom		

Stage/Plug #: 1									
Fluid #	Stage Type	Fluid Name	Qty	Qty uom	Mixing Density lbm/gal	Yield ft <sup>3</sup> /sk	Mix Fluid Gal/sk	Rate bbl/min	Total Mix Fluid Gal/sk
1	Fresh Water Spacer		20.00	bbl	8.34	.0	.0	4.0	
2	VariCem GJ1 Lead Cement	VARICEM (TM) CEMENT (452009)	170.0	sacks	12.3	2.38	13.75	8.0	13.75
	13.75 Gal	FRESH WATER							
3	VariCem GJ1 Tail Cement	VERSACEM (TM) SYSTEM (452010)	160.0	sacks	12.8	2.11	11.75	8.0	11.75
	11.75 Gal	FRESH WATER							
4	Fresh Water Displacement		89.00	bbl	8.34	.0	.0	10.0	
5	HalCem Top Out Cement	HALCEM (TM) SYSTEM (452986)		sacks	15.8	1.15	4.98		4.98
	4.98 Gal	FRESH WATER							
Calculated Values		Pressures		Volumes					
Displacement	88.6	Shut In: Instant		Lost Returns		Cement Slurry	132.2	Pad	
Top Of Cement	SURFACE	5 Min		Cement Returns	28	Actual Displacement	88.6	Treatment	
Frac Gradient		15 Min		Spacers	20	Load and Breakdown		Total Job	240.7
Rates									
Circulating	RIG	Mixing	8	Displacement	10	Avg. Job	8		
Cement Left In Pipe	Amount	0 ft	Reason	Shoe Joint					
Frac Ring # 1 @	ID	Frac ring # 2 @	ID	Frac Ring # 3 @	ID	Frac Ring # 4 @	ID		
The Information Stated Herein Is Correct				Customer Representative Signature					

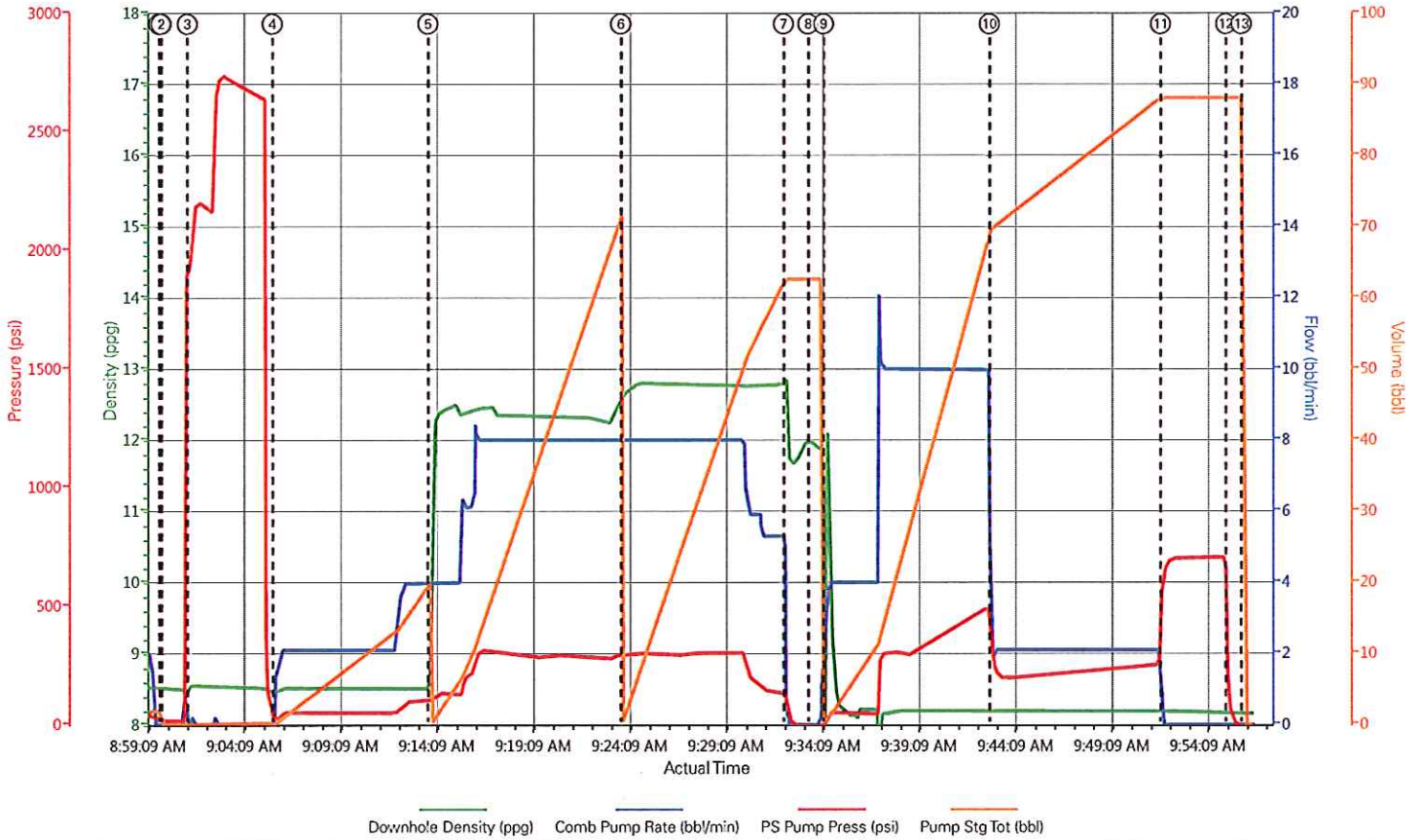
*The Road to Excellence Starts with Safety*

Sold To #: 300721	Ship To #: 3112114	Quote #:	Sales Order #: 900824477
Customer: WPX ENERGY ROCKY MOUNTAIN LLC-EBUS		Customer Rep: Brunk, Mike	
Well Name: RWF	Well #: 11-35	API/UWI #: 05-045-21843	
Field: RULISON	City (SAP): RIFLE	County/Parish: Garfield	State: Colorado
<b>Legal Description:</b>			
Lat: N 39.486 deg. OR N 39 deg. 29 min. 9.168 secs.		Long: W 107.861 deg. OR W -108 deg. 8 min. 21.84 secs.	
Contractor: CYCLONE 17		Rig/Platform Name/Num: 17	
Job Purpose: Cement Surface Casing			Ticket Amount:
Well Type: Development Well		Job Type: Cement Surface Casing	
Sales Person: MAYO, MARK		Srvc Supervisor: PONDER, THOMAS	MBU ID Emp #: 427112

Activity Description	Date/Time	Cht #	Rate bbl/min	Volume bbl		Pressure psig		Comments
				Stage	Total	Tubing	Casing	
Call Out	10/18/2013 23:00							
Crew Leave Yard	10/19/2013 01:00							ALL HES PRESENT FOR PRE-CONVOY SAFETY HUDDLE
Arrive At Loc	10/19/2013 03:00							RIG WAS STILL PULLING DRILL PIPE WHEN THE CREW ARRIVED ON LOCATION
Assessment Of Location Safety Meeting	10/19/2013 07:45							TD- 1176', TP- 1158', SJ- 36', MUD- 10.1 PPG, HOLE- 13 1/2", SURFACE CASING- 9 5/8" 32.3# H-40
Rig-Up Equipment	10/19/2013 08:00							1-550 PICKUP, 1-ELITE PUMP, 1-660 CUFT BULK TRUCK
Safety Meeting	10/19/2013 08:30							ALL HES PRESENT, RIG CREW PRESENT, RIG STARTED CIRCULATING ON BOTTOM @ 0730
Start Job	10/19/2013 08:57		2	2			46.0	FILL LINES
Test Lines	10/19/2013 09:01		0.1	0.1			2750.0	GOOD PRESSURE TEST, NO LEAKS IN THE LINES
Pump Spacer 1	10/19/2013 09:05		4	20			100.0	FRESH WATER
Pump Lead Cement	10/19/2013 09:13		8	72.1			300.0	170 SKS 12.3 PPG 2.38 FT3/SK 13.75 GAL/SK
Pump Tail Cement	10/19/2013 09:23		8	60.1			306.0	160 SKS 12.8 PPG 2.11 FT3/SK 11.75 GAL/SK

Activity Description	Date/Time	Cht #	Rate bbl/min	Volume bbl		Pressure psig		Comments
				Stage	Total	Tubing	Casing	
Shutdown	10/19/2013 09:32							
Drop Plug	10/19/2013 09:33							PLUG DROP VERIFIED VIA TATTLE TELL BY CUSTOMER REP
Pump Displacement	10/19/2013 09:34		10	68.6			500.0	FRESH WATER, WASHED UP MIXING TUB ON TOP OF PLUG WITH FIRST 10 BBL OF DISPLACEMENT
Slow Rate	10/19/2013 09:42		2	20	88.6		200.0	SLOWED RATE SHORTLY AFTER CEMENT CAME TO SURFACE TO ALLOW TIME TO GEL AND STOP FROM FALLING WHEN SHUTDOWN, GOOD CIRCULATION THROUGH OUT THE JOB, 28 BBL CEMENT CIRCULATED TO SURFACE
Bump Plug	10/19/2013 09:51				88.6		250.0	PLUG BUMPED, WELL MAINTAINED A FULL COLUMN OF FLUID FOR 30 MINS AFTER SHUTDOWN, CUSTOMER REP CALLED IT GOOD AND SAID WE DID NOT NEED TO PUMP TOP OUT
Check Floats	10/19/2013 09:55						706.0	FLOATS HELD, 1/2 BBL BACK TO THE DISPLACEMENT TANKS
End Job	10/19/2013 09:56							THANK YOU FOR CHOOSING HALLIBURTON, THOMAS PONDER AND CREW

WPX - RWF 11-35 - 9.625 IN SURFACE



Downhole Density (ppg)    Comb Pump Rate (bbl/min)    PS Pump Press (psi)    Pump Stg Tot (bbl)

- ① Fill Lines 8.52;0;18;0    ④ Pump Spacer 18.46;1.6;25;0.2    ⑦ Shutdown 12.44;0;73;62.6    ⑩ Slow Rate 8.18;1.8;280;69.9    ⑬ End Job 8.16;0;7;0
- ② Start Job 8.52;0;16;0    ⑤ Pump Lead Cement 9.64;4;103;0.2    ⑧ Drop Top Plug 11.97;0;7;62.6    ⑪ Bump Plug 8.19;0;635;88.1
- ③ Test Lines 8.54;0;1934;0.1    ⑥ Pump Tail Cement 12.65;8;288;0.9    ⑨ Pump Displacement 11.57;3.2;10;0.5    ⑫ Check Floats 8.16;0;112;88.1

HALLIBURTON | iCem® Service

Created: 2013-10-19 06:38:57, Version: 3.0.121

Edit

Customer: WPX ENERGY ROCKY MOUNTAIN LLC-EBUS

Job Date: 10/19/2013 8:28:48 AM

Well: RWF 11-35

Representative: HARRY SAMPSON

Sales Order #: 900824477

ELITE #7: THOMAS PONDER / ADAM ANDERSON