

Weld Co., Co (NAD 83) Xcel 13-27HZ Pad Xcel 12N-22HZ Extreme 23 Plan #4

SITE DETAILS: Xcel 13-27HZ Pad

Site Centre Northing: 1249341.00
Easting: 3172361.42
Positional Uncertainty: 0.0
Convergence: 0.40
Local North: Grid

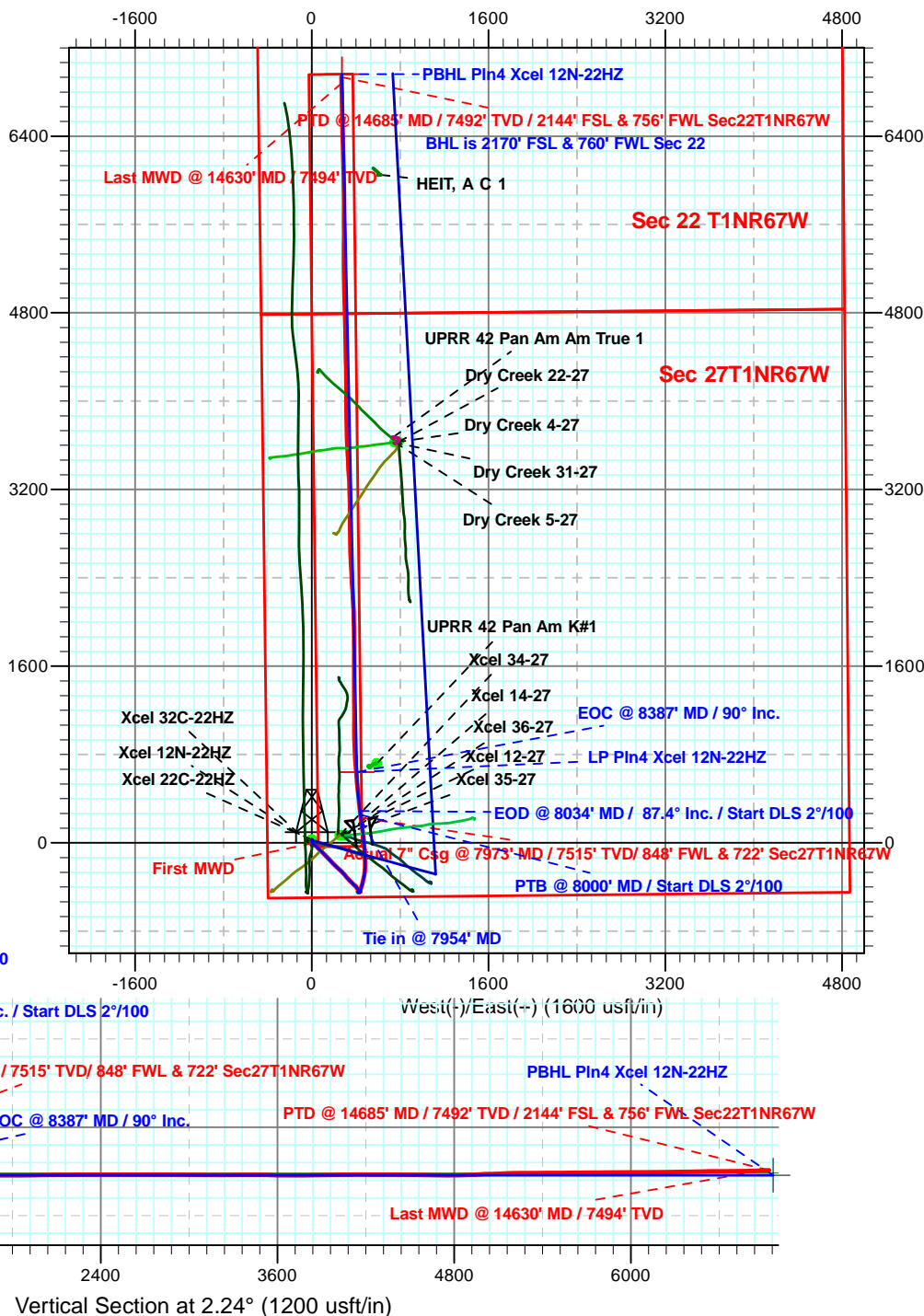
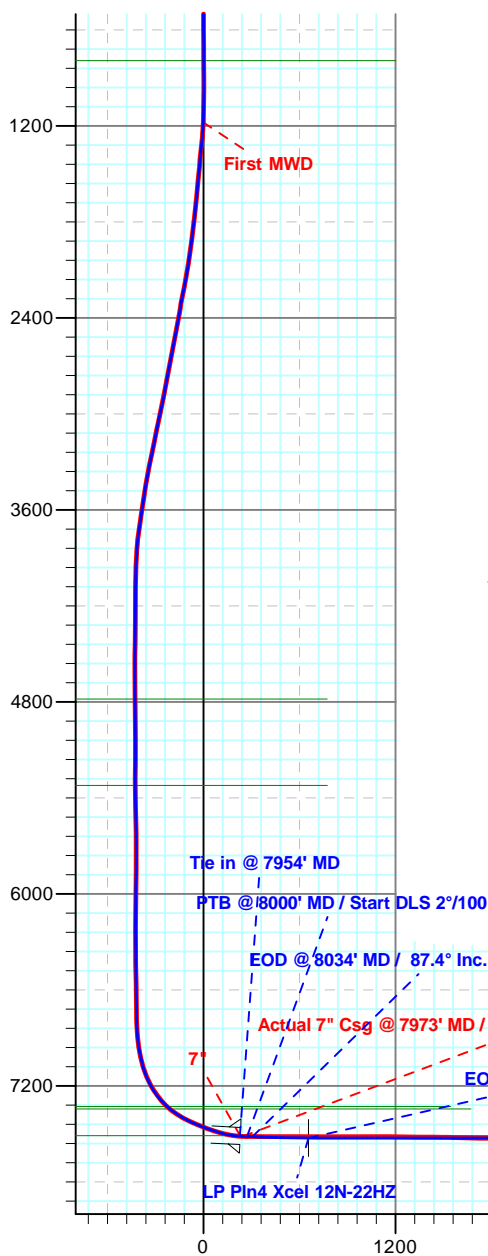


Azimuths to Grid North
Convergence: 0.40°
Total Correction: 8.17°

Magnetic Field
Strength: 52654.9snT
Dip Angle: 66.64°
Date: 12/3/2013
Model: IGRF2010

SECTION DETAILS

MD	Inc	Azi	TVD	+N/-S	+E/-W	Dleg	TFace	Vsect	Target
7954.0	87.10	352.50	7513.6	209.7	446.3	0.00	0.00	227.0	
8000.0	88.00	352.50	7515.6	255.3	440.3	1.96	0.00	272.3	
8033.5	87.40	352.20	7516.9	288.5	435.9	2.00	-153.46	305.3	
8386.9	90.00	358.77	7525.0	640.5	408.1	2.00	68.52	655.9	
14708.7	90.00	358.77	7525.0	6960.8	272.9	0.00	0.00	6966.2	PBHL Pln4 Xcel 12N-22HZ





Anadarko

Weld Co., Co (NAD 83)

Xcel 13-27HZ Pad

Xcel 12N-22HZ

Wellbore #1

Design: OH

Survey Report - Geographic

24 January, 2014



Company:	Anadarko	Local Co-ordinate Reference:	Well Xcel 12N-22HZ
Project:	Weld Co., Co (NAD 83)	TVD Reference:	Well @ 5042.0usft (Extreme 23)
Site:	Xcel 13-27HZ Pad	MD Reference:	Well @ 5042.0usft (Extreme 23)
Well:	Xcel 12N-22HZ	North Reference:	Grid
Wellbore:	Wellbore #1	Survey Calculation Method:	Minimum Curvature
Design:	OH	Database:	EDM 5000.1 Single User Db

Project	Weld Co., Co (NAD 83)		
Map System:	US State Plane 1983	System Datum:	Mean Sea Level
Geo Datum:	North American Datum 1983		
Map Zone:	Colorado Northern Zone		

Site	Xcel 13-27HZ Pad		
Site Position:		Northing:	1,249,340.99 usft
From:	Lat/Long	Easting:	3,172,361.42 usft
Position Uncertainty:	0.0 usft	Slot Radius:	13-3/16 "
		Latitude:	40° 0' 58.269 N
		Longitude:	104° 53' 4.596 W
		Grid Convergence:	0.40 °

Well	Xcel 12N-22HZ		
Well Position	+N-S	0.0 usft	Northing:
	+E-W	0.0 usft	Easting:
Position Uncertainty	0.0 usft	Wellhead Elevation:	0.0 usft
		Latitude:	40° 0' 58.269 N
		Longitude:	104° 53' 4.596 W
		Ground Level:	5,026.0 usft

Wellbore	Wellbore #1				
Magnetics	Model Name	Sample Date	Declination (°)	Dip Angle (°)	Field Strength (nT)
	IGRF2010	12/3/2013	8.56	66.64	52,655

Design	OH				
Audit Notes:					
Version:	1.0	Phase:	ACTUAL	Tie On Depth:	0.0
Vertical Section:	Depth From (TVD) (usft)	+N-S (usft)	+E-W (usft)	Direction (°)	
	0.0	0.0	0.0	62.33	

Survey Program	Date	1/24/2014			
From (usft)	To (usft)	Survey (Wellbore)	Tool Name	Description	
100.0	979.0	Survey #1 (Wellbore #1)	CT_GYRO_MS	Continuous Gyro Multishot	
1,177.0	14,685.0	Survey #2 (Wellbore #1)	MWD	MWD - Standard	

Survey										
Measured Depth (usft)	Inclination (°)	Azimuth (°)	Vertical Depth (usft)	+N-S (usft)	+E-W (usft)	Map Northing (usft)	Map Easting (usft)	Latitude	Longitude	
0.0	0.00	0.00	0.0	0.0	0.0	1,249,341.04	3,172,361.42	40° 0' 58.269 N	104° 53' 4.596 W	
100.0	0.40	147.92	100.0	-0.3	0.2	1,249,340.74	3,172,361.60	40° 0' 58.266 N	104° 53' 4.594 W	
200.0	0.35	96.72	200.0	-0.6	0.7	1,249,340.41	3,172,362.09	40° 0' 58.263 N	104° 53' 4.587 W	
300.0	0.50	90.27	300.0	-0.7	1.4	1,249,340.37	3,172,362.83	40° 0' 58.263 N	104° 53' 4.578 W	
400.0	0.56	73.96	400.0	-0.5	2.3	1,249,340.51	3,172,363.74	40° 0' 58.264 N	104° 53' 4.566 W	
500.0	0.53	72.37	500.0	-0.3	3.2	1,249,340.78	3,172,364.65	40° 0' 58.267 N	104° 53' 4.555 W	
600.0	0.49	49.71	600.0	0.2	4.0	1,249,341.20	3,172,365.41	40° 0' 58.271 N	104° 53' 4.545 W	
700.0	0.37	38.31	700.0	0.7	4.5	1,249,341.73	3,172,365.94	40° 0' 58.276 N	104° 53' 4.538 W	
800.0	0.38	9.70	800.0	1.3	4.8	1,249,342.31	3,172,366.20	40° 0' 58.282 N	104° 53' 4.534 W	
900.0	0.44	355.69	900.0	2.0	4.8	1,249,343.02	3,172,366.22	40° 0' 58.289 N	104° 53' 4.534 W	
979.0	0.30	318.03	979.0	2.4	4.6	1,249,343.47	3,172,366.06	40° 0' 58.293 N	104° 53' 4.536 W	

Company:	Anadarko	Local Co-ordinate Reference:	Well Xcel 12N-22HZ
Project:	Weld Co., Co (NAD 83)	TVD Reference:	Well @ 5042.0usft (Extreme 23)
Site:	Xcel 13-27HZ Pad	MD Reference:	Well @ 5042.0usft (Extreme 23)
Well:	Xcel 12N-22HZ	North Reference:	Grid
Wellbore:	Wellbore #1	Survey Calculation Method:	Minimum Curvature
Design:	OH	Database:	EDM 5000.1 Single User Db

Survey									
Measured Depth (usft)	Inclination (°)	Azimuth (°)	Vertical Depth (usft)	+N/-S (usft)	+E/-W (usft)	Map Northing (usft)	Map Easting (usft)	Latitude	Longitude
1,177.0	3.90	133.20	1,176.8	-1.8	9.2	1,249,339.25	3,172,370.63	40° 0' 58.251 N	104° 53' 4.478 W
First MWD									
1,271.0	7.60	134.20	1,270.3	-8.3	16.0	1,249,332.72	3,172,377.42	40° 0' 58.186 N	104° 53' 4.391 W
1,364.0	8.60	136.80	1,362.4	-17.7	25.2	1,249,323.37	3,172,386.59	40° 0' 58.093 N	104° 53' 4.274 W
1,458.0	7.20	135.80	1,455.5	-27.0	34.1	1,249,314.02	3,172,395.50	40° 0' 58.000 N	104° 53' 4.160 W
1,554.0	8.60	134.40	1,550.6	-36.4	43.4	1,249,304.68	3,172,404.83	40° 0' 57.907 N	104° 53' 4.041 W
1,646.0	8.30	130.90	1,641.6	-45.5	53.3	1,249,295.52	3,172,414.76	40° 0' 57.816 N	104° 53' 3.914 W
1,740.0	9.70	134.00	1,734.4	-55.5	64.2	1,249,285.58	3,172,425.59	40° 0' 57.717 N	104° 53' 3.776 W
1,833.0	9.50	132.40	1,826.1	-66.1	75.5	1,249,274.96	3,172,436.89	40° 0' 57.611 N	104° 53' 3.632 W
1,926.0	11.10	133.50	1,917.6	-77.4	87.6	1,249,263.62	3,172,449.05	40° 0' 57.498 N	104° 53' 3.477 W
2,019.0	12.30	134.70	2,008.7	-90.5	101.2	1,249,250.49	3,172,462.59	40° 0' 57.368 N	104° 53' 3.304 W
2,111.0	13.70	136.50	2,098.4	-105.3	115.6	1,249,235.70	3,172,477.05	40° 0' 57.220 N	104° 53' 3.119 W
2,205.0	15.00	137.50	2,189.4	-122.4	131.5	1,249,218.65	3,172,492.93	40° 0' 57.051 N	104° 53' 2.917 W
2,298.0	15.80	136.70	2,279.1	-140.5	148.3	1,249,200.57	3,172,509.75	40° 0' 56.871 N	104° 53' 2.702 W
2,391.0	13.90	133.30	2,369.0	-157.3	165.1	1,249,183.69	3,172,526.56	40° 0' 56.703 N	104° 53' 2.487 W
2,484.0	14.30	139.30	2,459.2	-173.7	180.8	1,249,167.32	3,172,542.18	40° 0' 56.540 N	104° 53' 2.288 W
2,577.0	16.40	135.60	2,548.8	-191.8	197.4	1,249,149.23	3,172,558.86	40° 0' 56.360 N	104° 53' 2.075 W
2,669.0	16.40	133.20	2,637.1	-210.0	216.0	1,249,131.06	3,172,577.41	40° 0' 56.179 N	104° 53' 1.839 W
2,760.0	16.20	131.40	2,724.5	-227.2	234.9	1,249,113.87	3,172,596.30	40° 0' 56.008 N	104° 53' 1.597 W
2,851.0	16.20	130.50	2,811.8	-243.8	254.1	1,249,097.23	3,172,615.48	40° 0' 55.843 N	104° 53' 1.352 W
2,942.0	16.00	136.30	2,899.3	-261.1	272.4	1,249,079.92	3,172,633.79	40° 0' 55.670 N	104° 53' 1.119 W
3,033.0	16.40	141.90	2,986.7	-280.3	289.0	1,249,060.74	3,172,650.39	40° 0' 55.480 N	104° 53' 0.907 W
3,124.0	15.30	140.90	3,074.2	-299.7	304.5	1,249,041.31	3,172,665.89	40° 0' 55.286 N	104° 53' 0.709 W
3,216.0	16.40	135.10	3,162.7	-318.3	321.3	1,249,022.69	3,172,682.71	40° 0' 55.101 N	104° 53' 0.495 W
3,307.0	17.10	133.30	3,249.9	-336.6	340.1	1,249,004.42	3,172,701.52	40° 0' 54.919 N	104° 53' 0.255 W
3,392.0	16.50	135.60	3,331.2	-353.8	357.6	1,248,987.22	3,172,719.06	40° 0' 54.748 N	104° 53' 0.031 W
3,477.0	15.10	135.40	3,413.0	-370.3	373.9	1,248,970.71	3,172,735.28	40° 0' 54.584 N	104° 52' 59.824 W
3,562.0	13.20	133.20	3,495.4	-384.9	388.7	1,248,956.18	3,172,750.13	40° 0' 54.439 N	104° 52' 59.634 W
3,648.0	10.00	143.00	3,579.7	-397.5	400.4	1,248,943.50	3,172,761.78	40° 0' 54.313 N	104° 52' 59.486 W
3,733.0	10.90	146.20	3,663.3	-410.1	409.3	1,248,930.92	3,172,770.69	40° 0' 54.188 N	104° 52' 59.372 W
3,818.0	10.00	144.40	3,746.8	-422.8	418.0	1,248,918.24	3,172,779.46	40° 0' 54.062 N	104° 52' 59.261 W
3,903.0	6.70	130.90	3,830.9	-432.0	426.1	1,248,908.99	3,172,787.51	40° 0' 53.970 N	104° 52' 59.158 W
3,988.0	3.90	147.90	3,915.6	-437.7	431.4	1,248,903.30	3,172,792.79	40° 0' 53.914 N	104° 52' 59.091 W
4,073.0	0.90	158.50	4,000.5	-440.8	433.2	1,248,900.23	3,172,794.58	40° 0' 53.883 N	104° 52' 59.068 W
4,159.0	0.50	200.70	4,086.5	-441.8	433.3	1,248,899.25	3,172,794.69	40° 0' 53.874 N	104° 52' 59.067 W
4,244.0	0.70	207.50	4,171.5	-442.6	432.9	1,248,898.44	3,172,794.32	40° 0' 53.866 N	104° 52' 59.072 W
4,330.0	1.10	247.40	4,257.5	-443.4	431.9	1,248,897.66	3,172,793.31	40° 0' 53.858 N	104° 52' 59.085 W
4,414.0	0.70	230.90	4,341.5	-444.0	430.8	1,248,897.02	3,172,792.17	40° 0' 53.852 N	104° 52' 59.099 W
4,500.0	0.90	225.30	4,427.5	-444.8	429.9	1,248,896.22	3,172,791.28	40° 0' 53.844 N	104° 52' 59.111 W
4,585.0	0.70	243.90	4,512.4	-445.5	428.9	1,248,895.52	3,172,790.34	40° 0' 53.837 N	104° 52' 59.123 W
4,670.0	0.90	279.00	4,597.4	-445.6	427.8	1,248,895.39	3,172,789.22	40° 0' 53.836 N	104° 52' 59.137 W
4,755.0	0.90	297.30	4,682.4	-445.2	426.5	1,248,895.80	3,172,787.97	40° 0' 53.840 N	104° 52' 59.153 W
4,841.0	0.90	296.80	4,768.4	-444.6	425.3	1,248,896.42	3,172,786.76	40° 0' 53.846 N	104° 52' 59.169 W
4,926.0	1.10	298.20	4,853.4	-443.9	424.0	1,248,897.10	3,172,785.45	40° 0' 53.853 N	104° 52' 59.186 W
5,011.0	0.90	303.30	4,938.4	-443.2	422.8	1,248,897.86	3,172,784.17	40° 0' 53.861 N	104° 52' 59.202 W
5,097.0	0.90	289.40	5,024.4	-442.6	421.6	1,248,898.45	3,172,782.97	40° 0' 53.867 N	104° 52' 59.217 W
5,182.0	1.10	298.20	5,109.4	-442.0	420.2	1,248,899.06	3,172,781.62	40° 0' 53.873 N	104° 52' 59.235 W
5,268.0	2.10	230.00	5,195.3	-442.6	418.3	1,248,898.44	3,172,779.69	40° 0' 53.867 N	104° 52' 59.260 W
5,353.0	0.90	98.90	5,280.3	-443.7	417.7	1,248,897.33	3,172,779.15	40° 0' 53.856 N	104° 52' 59.267 W
5,438.0	1.40	45.60	5,365.3	-443.1	419.1	1,248,897.96	3,172,780.55	40° 0' 53.862 N	104° 52' 59.249 W
5,524.0	1.40	29.30	5,451.3	-441.4	420.4	1,248,899.61	3,172,781.82	40° 0' 53.878 N	104° 52' 59.232 W
5,609.0	2.50	63.50	5,536.2	-439.7	422.6	1,248,901.34	3,172,783.99	40° 0' 53.895 N	104° 52' 59.204 W
5,694.0	2.50	54.20	5,621.2	-437.8	425.7	1,248,903.25	3,172,787.15	40° 0' 53.914 N	104° 52' 59.163 W
5,780.0	2.10	104.70	5,707.1	-437.1	428.8	1,248,903.95	3,172,790.19	40° 0' 53.920 N	104° 52' 59.124 W
5,865.0	2.30	83.20	5,792.0	-437.3	432.0	1,248,903.76	3,172,793.39	40° 0' 53.918 N	104° 52' 59.083 W

Company:	Anadarko	Local Co-ordinate Reference:	Well Xcel 12N-22HZ
Project:	Weld Co., Co (NAD 83)	TVD Reference:	Well @ 5042.0usft (Extreme 23)
Site:	Xcel 13-27HZ Pad	MD Reference:	Well @ 5042.0usft (Extreme 23)
Well:	Xcel 12N-22HZ	North Reference:	Grid
Wellbore:	Wellbore #1	Survey Calculation Method:	Minimum Curvature
Design:	OH	Database:	EDM 5000.1 Single User Db

Survey									
Measured Depth (usft)	Inclination (°)	Azimuth (°)	Vertical Depth (usft)	+N/-S (usft)	+E/-W (usft)	Map Northing (usft)	Map Easting (usft)	Latitude	Longitude
5,951.0	1.80	144.80	5,878.0	-438.2	434.5	1,248,902.86	3,172,795.89	40° 0' 53.909 N	104° 52' 59.051 W
6,036.0	1.40	148.30	5,963.0	-440.2	435.8	1,248,900.88	3,172,797.20	40° 0' 53.890 N	104° 52' 59.034 W
6,121.0	0.90	150.20	6,047.9	-441.6	436.7	1,248,899.42	3,172,798.08	40° 0' 53.875 N	104° 52' 59.023 W
6,207.0	0.40	100.30	6,133.9	-442.3	437.3	1,248,898.78	3,172,798.71	40° 0' 53.869 N	104° 52' 59.015 W
6,292.0	0.50	62.10	6,218.9	-442.1	437.9	1,248,898.90	3,172,799.33	40° 0' 53.870 N	104° 52' 59.007 W
6,377.0	0.40	70.70	6,303.9	-441.9	438.5	1,248,899.17	3,172,799.94	40° 0' 53.873 N	104° 52' 58.999 W
6,463.0	0.70	53.30	6,389.9	-441.5	439.2	1,248,899.58	3,172,800.64	40° 0' 53.877 N	104° 52' 58.990 W
6,548.0	0.90	14.30	6,474.9	-440.5	439.8	1,248,900.54	3,172,801.22	40° 0' 53.886 N	104° 52' 58.983 W
6,633.0	1.10	344.40	6,559.9	-439.1	439.8	1,248,901.97	3,172,801.17	40° 0' 53.900 N	104° 52' 58.983 W
6,719.0	0.90	6.80	6,645.9	-437.6	439.6	1,248,903.44	3,172,801.03	40° 0' 53.915 N	104° 52' 58.985 W
6,804.0	0.90	357.10	6,730.9	-436.3	439.7	1,248,904.77	3,172,801.07	40° 0' 53.928 N	104° 52' 58.984 W
6,889.0	0.70	4.10	6,815.9	-435.1	439.7	1,248,905.95	3,172,801.08	40° 0' 53.940 N	104° 52' 58.984 W
6,932.0	3.70	355.20	6,858.8	-433.4	439.6	1,248,907.60	3,172,800.98	40° 0' 53.956 N	104° 52' 58.985 W
6,975.0	7.20	8.70	6,901.6	-429.4	439.9	1,248,911.65	3,172,801.27	40° 0' 53.996 N	104° 52' 58.981 W
7,018.0	8.80	17.50	6,944.2	-423.6	441.2	1,248,917.45	3,172,802.67	40° 0' 54.053 N	104° 52' 58.963 W
7,061.0	10.20	19.40	6,986.6	-416.9	443.5	1,248,924.18	3,172,804.92	40° 0' 54.119 N	104° 52' 58.933 W
7,104.0	13.40	16.10	7,028.7	-408.5	446.1	1,248,932.56	3,172,807.57	40° 0' 54.202 N	104° 52' 58.898 W
7,146.0	16.20	16.60	7,069.3	-398.2	449.2	1,248,942.85	3,172,810.59	40° 0' 54.303 N	104° 52' 58.858 W
7,189.0	19.40	15.60	7,110.2	-385.6	452.8	1,248,955.48	3,172,814.23	40° 0' 54.428 N	104° 52' 58.811 W
7,232.0	21.80	17.00	7,150.5	-371.0	457.1	1,248,970.00	3,172,818.48	40° 0' 54.571 N	104° 52' 58.755 W
7,275.0	29.00	15.40	7,189.3	-353.3	462.2	1,248,987.70	3,172,823.59	40° 0' 54.746 N	104° 52' 58.687 W
7,318.0	35.00	10.50	7,225.8	-331.1	467.2	1,249,009.90	3,172,828.61	40° 0' 54.965 N	104° 52' 58.621 W
7,360.0	36.20	11.90	7,259.9	-307.2	471.9	1,249,033.88	3,172,833.36	40° 0' 55.202 N	104° 52' 58.558 W
7,403.0	40.60	9.60	7,293.6	-280.9	476.9	1,249,060.12	3,172,838.32	40° 0' 55.460 N	104° 52' 58.492 W
7,446.0	46.60	5.20	7,324.7	-251.5	480.7	1,249,089.50	3,172,842.07	40° 0' 55.751 N	104° 52' 58.441 W
7,488.0	52.10	0.40	7,352.1	-219.7	482.2	1,249,121.31	3,172,843.57	40° 0' 56.065 N	104° 52' 58.419 W
7,531.0	56.80	358.20	7,377.1	-184.8	481.7	1,249,156.27	3,172,843.13	40° 0' 56.410 N	104° 52' 58.421 W
7,574.0	61.40	358.30	7,399.2	-147.9	480.6	1,249,193.14	3,172,842.00	40° 0' 56.775 N	104° 52' 58.432 W
7,616.0	64.80	358.50	7,418.2	-110.5	479.5	1,249,230.58	3,172,840.96	40° 0' 57.145 N	104° 52' 58.442 W
7,658.0	67.00	356.60	7,435.3	-72.2	477.9	1,249,268.88	3,172,839.31	40° 0' 57.523 N	104° 52' 58.460 W
7,701.0	68.40	356.00	7,451.6	-32.5	475.3	1,249,308.58	3,172,836.74	40° 0' 57.916 N	104° 52' 58.490 W
7,743.0	70.60	354.10	7,466.3	6.7	471.9	1,249,347.77	3,172,833.34	40° 0' 58.303 N	104° 52' 58.530 W
7,786.0	71.40	353.60	7,480.3	47.2	467.6	1,249,388.19	3,172,828.99	40° 0' 58.703 N	104° 52' 58.582 W
7,828.0	73.00	352.30	7,493.2	86.8	462.7	1,249,427.87	3,172,824.08	40° 0' 59.096 N	104° 52' 58.642 W
7,871.0	78.30	351.80	7,503.8	128.1	456.9	1,249,469.12	3,172,818.32	40° 0' 59.504 N	104° 52' 58.712 W
7,913.0	83.80	353.10	7,510.4	169.2	451.5	1,249,510.23	3,172,812.87	40° 0' 59.910 N	104° 52' 58.778 W
7,954.0	87.10	352.50	7,513.6	209.7	446.3	1,249,550.77	3,172,807.75	40° 1' 0.311 N	104° 52' 58.841 W
7,973.0	87.56	352.87	7,514.5	228.6	443.9	1,249,569.60	3,172,805.33	40° 1' 0.498 N	104° 52' 58.870 W
Actual 7" Csg @ 7973' MD / 7515' TVD/ 848' FWL & 722' Sec27T1NR67W									
8,020.0	88.70	353.80	7,516.0	275.2	438.5	1,249,616.25	3,172,799.88	40° 1' 0.959 N	104° 52' 58.936 W
8,113.0	89.70	353.80	7,517.3	367.7	428.4	1,249,708.70	3,172,789.84	40° 1' 1.873 N	104° 52' 59.057 W
8,206.0	90.40	353.60	7,517.3	460.1	418.2	1,249,801.14	3,172,779.63	40° 1' 2.788 N	104° 52' 59.180 W
8,299.0	90.40	354.80	7,516.6	552.6	408.8	1,249,893.66	3,172,770.24	40° 1' 3.703 N	104° 52' 59.292 W
8,393.0	88.50	354.50	7,517.5	646.2	400.1	1,249,987.24	3,172,761.47	40° 1' 4.628 N	104° 52' 59.396 W
8,485.0	91.30	356.40	7,517.7	737.9	392.8	1,250,078.94	3,172,754.18	40° 1' 5.535 N	104° 52' 59.482 W
8,578.0	90.10	358.50	7,516.5	830.8	388.6	1,250,171.83	3,172,750.04	40° 1' 6.453 N	104° 52' 59.527 W
8,671.0	89.70	359.60	7,516.7	923.8	387.1	1,250,264.82	3,172,748.50	40° 1' 7.372 N	104° 52' 59.538 W
8,763.0	89.40	358.90	7,517.4	1,015.8	385.9	1,250,356.80	3,172,747.29	40° 1' 8.281 N	104° 52' 59.546 W
8,854.0	89.60	0.60	7,518.2	1,106.8	385.5	1,250,447.80	3,172,746.90	40° 1' 9.180 N	104° 52' 59.543 W
8,945.0	90.40	358.50	7,518.2	1,197.8	384.8	1,250,538.79	3,172,746.18	40° 1' 10.080 N	104° 52' 59.544 W
9,036.0	89.00	359.40	7,518.7	1,288.7	383.1	1,250,629.77	3,172,744.51	40° 1' 10.979 N	104° 52' 59.557 W
9,127.0	90.10	359.70	7,519.4	1,379.7	382.4	1,250,720.76	3,172,743.80	40° 1' 11.878 N	104° 52' 59.558 W
9,219.0	89.00	1.00	7,520.1	1,471.7	382.9	1,250,812.75	3,172,744.36	40° 1' 12.787 N	104° 52' 59.543 W
9,310.0	88.00	359.90	7,522.5	1,562.7	383.7	1,250,903.72	3,172,745.08	40° 1' 13.686 N	104° 52' 59.525 W
9,419.0	88.70	359.90	7,525.7	1,671.6	383.5	1,251,012.67	3,172,744.89	40° 1' 14.763 N	104° 52' 59.518 W

Company:	Anadarko	Local Co-ordinate Reference:	Well Xcel 12N-22HZ
Project:	Weld Co., Co (NAD 83)	TVD Reference:	Well @ 5042.0usft (Extreme 23)
Site:	Xcel 13-27HZ Pad	MD Reference:	Well @ 5042.0usft (Extreme 23)
Well:	Xcel 12N-22HZ	North Reference:	Grid
Wellbore:	Wellbore #1	Survey Calculation Method:	Minimum Curvature
Design:	OH	Database:	EDM 5000.1 Single User Db

Survey									
Measured Depth (usft)	Inclination (°)	Azimuth (°)	Vertical Depth (usft)	+N/-S (usft)	+E/-W (usft)	Map Northing (usft)	Map Easting (usft)	Latitude	Longitude
9,508.0	89.70	0.30	7,526.9	1,760.6	383.6	1,251,101.66	3,172,745.04	40° 1' 15.642 N	104° 52' 59.508 W
9,593.0	91.50	359.70	7,526.0	1,845.6	383.6	1,251,186.65	3,172,745.04	40° 1' 16.482 N	104° 52' 59.500 W
9,679.0	89.70	358.50	7,525.1	1,931.6	382.3	1,251,272.63	3,172,743.69	40° 1' 17.332 N	104° 52' 59.510 W
9,764.0	91.50	358.50	7,524.2	2,016.6	380.0	1,251,357.59	3,172,741.47	40° 1' 18.172 N	104° 52' 59.531 W
9,849.0	90.30	358.50	7,522.9	2,101.5	377.8	1,251,442.55	3,172,739.24	40° 1' 19.011 N	104° 52' 59.552 W
9,935.0	90.10	356.20	7,522.6	2,187.4	373.8	1,251,528.45	3,172,735.26	40° 1' 19.861 N	104° 52' 59.595 W
10,020.0	90.40	356.20	7,522.2	2,272.2	368.2	1,251,613.27	3,172,729.63	40° 1' 20.699 N	104° 52' 59.660 W
10,105.0	89.60	356.90	7,522.2	2,357.1	363.1	1,251,698.11	3,172,724.52	40° 1' 21.538 N	104° 52' 59.718 W
10,191.0	90.40	356.90	7,522.2	2,442.9	358.4	1,251,783.98	3,172,719.87	40° 1' 22.387 N	104° 52' 59.771 W
10,276.0	90.60	357.80	7,521.5	2,527.9	354.5	1,251,868.89	3,172,715.94	40° 1' 23.226 N	104° 52' 59.813 W
10,361.0	89.20	358.00	7,521.6	2,612.8	351.4	1,251,953.83	3,172,712.82	40° 1' 24.066 N	104° 52' 59.846 W
10,446.0	90.40	357.60	7,521.9	2,697.7	348.1	1,252,038.77	3,172,709.56	40° 1' 24.906 N	104° 52' 59.880 W
10,531.0	89.40	359.60	7,522.1	2,782.7	346.1	1,252,123.73	3,172,707.48	40° 1' 25.745 N	104° 52' 59.899 W
10,617.0	90.30	0.40	7,522.3	2,868.7	346.1	1,252,209.73	3,172,707.48	40° 1' 26.595 N	104° 52' 59.892 W
10,702.0	89.00	0.10	7,522.8	2,953.7	346.4	1,252,294.73	3,172,707.85	40° 1' 27.435 N	104° 52' 59.879 W
10,787.0	89.60	359.70	7,523.8	3,038.7	346.3	1,252,379.72	3,172,707.70	40° 1' 28.275 N	104° 52' 59.874 W
10,873.0	90.10	358.70	7,524.1	3,124.7	345.1	1,252,465.71	3,172,706.50	40° 1' 29.125 N	104° 52' 59.881 W
10,958.0	90.10	357.40	7,523.9	3,209.6	342.2	1,252,550.66	3,172,703.61	40° 1' 29.965 N	104° 52' 59.911 W
11,043.0	90.10	355.70	7,523.8	3,294.5	337.1	1,252,635.50	3,172,698.50	40° 1' 30.804 N	104° 52' 59.969 W
11,129.0	90.30	357.30	7,523.5	3,380.3	331.8	1,252,721.34	3,172,693.25	40° 1' 31.652 N	104° 53' 0.029 W
11,214.0	90.30	357.80	7,523.0	3,465.2	328.2	1,252,806.26	3,172,689.61	40° 1' 32.492 N	104° 53' 0.068 W
11,300.0	88.20	356.70	7,524.2	3,551.1	324.1	1,252,892.15	3,172,685.49	40° 1' 33.341 N	104° 53' 0.113 W
11,385.0	88.70	357.60	7,526.5	3,636.0	319.8	1,252,977.01	3,172,681.26	40° 1' 34.180 N	104° 53' 0.160 W
11,471.0	89.70	358.00	7,527.7	3,721.9	316.5	1,253,062.94	3,172,677.96	40° 1' 35.029 N	104° 53' 0.195 W
11,556.0	91.00	359.60	7,527.1	3,806.9	314.8	1,253,147.91	3,172,676.18	40° 1' 35.869 N	104° 53' 0.210 W
11,641.0	92.40	359.00	7,524.6	3,891.8	313.7	1,253,232.87	3,172,675.14	40° 1' 36.709 N	104° 53' 0.216 W
11,727.0	90.80	359.60	7,522.2	3,977.8	312.7	1,253,318.82	3,172,674.09	40° 1' 37.558 N	104° 53' 0.222 W
11,812.0	89.20	359.90	7,522.2	4,062.8	312.3	1,253,403.82	3,172,673.72	40° 1' 38.398 N	104° 53' 0.219 W
11,897.0	89.90	359.70	7,522.9	4,147.8	312.0	1,253,488.82	3,172,673.43	40° 1' 39.238 N	104° 53' 0.215 W
11,983.0	90.80	359.40	7,522.4	4,233.8	311.3	1,253,574.81	3,172,672.75	40° 1' 40.088 N	104° 53' 0.216 W
12,068.0	90.40	358.90	7,521.5	4,318.8	310.1	1,253,659.80	3,172,671.49	40° 1' 40.928 N	104° 53' 0.225 W
12,154.0	89.00	359.40	7,521.9	4,404.7	308.8	1,253,745.78	3,172,670.21	40° 1' 41.778 N	104° 53' 0.233 W
12,239.0	89.40	358.20	7,523.1	4,489.7	307.0	1,253,830.75	3,172,668.43	40° 1' 42.618 N	104° 53' 0.249 W
12,324.0	89.20	359.00	7,524.1	4,574.7	304.9	1,253,915.72	3,172,666.36	40° 1' 43.457 N	104° 53' 0.268 W
12,410.0	89.20	359.20	7,525.3	4,660.7	303.6	1,254,001.70	3,172,665.01	40° 1' 44.307 N	104° 53' 0.277 W
12,495.0	89.60	358.30	7,526.2	4,745.6	301.7	1,254,086.68	3,172,663.15	40° 1' 45.147 N	104° 53' 0.294 W
12,580.0	90.80	358.90	7,525.9	4,830.6	299.7	1,254,171.65	3,172,661.08	40° 1' 45.987 N	104° 53' 0.313 W
12,666.0	93.30	358.00	7,522.9	4,916.5	297.3	1,254,257.55	3,172,658.75	40° 1' 46.836 N	104° 53' 0.335 W
12,751.0	92.20	358.20	7,518.8	5,001.4	294.5	1,254,342.41	3,172,655.94	40° 1' 47.675 N	104° 53' 0.364 W
12,837.0	92.40	358.20	7,515.3	5,087.3	291.8	1,254,428.30	3,172,653.24	40° 1' 48.524 N	104° 53' 0.391 W
12,922.0	91.50	359.70	7,512.4	5,172.2	290.3	1,254,513.23	3,172,651.68	40° 1' 49.363 N	104° 53' 0.403 W
13,007.0	90.30	0.80	7,511.1	5,257.2	290.6	1,254,598.22	3,172,652.05	40° 1' 50.203 N	104° 53' 0.391 W
13,093.0	90.10	1.00	7,510.8	5,343.2	292.0	1,254,684.20	3,172,653.40	40° 1' 51.053 N	104° 53' 0.366 W
13,178.0	90.80	0.10	7,510.1	5,428.2	292.8	1,254,769.20	3,172,654.22	40° 1' 51.893 N	104° 53' 0.348 W
13,264.0	90.40	359.90	7,509.2	5,514.2	292.8	1,254,855.19	3,172,654.22	40° 1' 52.742 N	104° 53' 0.340 W
13,349.0	90.10	359.90	7,508.9	5,599.2	292.7	1,254,940.19	3,172,654.07	40° 1' 53.582 N	104° 53' 0.334 W
13,434.0	91.00	359.70	7,508.0	5,684.1	292.4	1,255,025.19	3,172,653.78	40° 1' 54.422 N	104° 53' 0.330 W
13,520.0	90.60	359.60	7,506.8	5,770.1	291.8	1,255,111.18	3,172,653.25	40° 1' 55.272 N	104° 53' 0.329 W
13,605.0	90.10	359.60	7,506.3	5,855.1	291.2	1,255,196.17	3,172,652.66	40° 1' 56.112 N	104° 53' 0.329 W
13,690.0	90.40	359.00	7,506.0	5,940.1	290.2	1,255,281.16	3,172,651.62	40° 1' 56.952 N	104° 53' 0.335 W
13,776.0	89.70	359.00	7,505.9	6,026.1	288.7	1,255,367.15	3,172,650.12	40° 1' 57.802 N	104° 53' 0.347 W
13,861.0	90.30	358.50	7,505.9	6,111.1	286.8	1,255,452.13	3,172,648.26	40° 1' 58.642 N	104° 53' 0.363 W
13,947.0	90.60	358.70	7,505.2	6,197.1	284.7	1,255,538.10	3,172,646.16	40° 1' 59.492 N	104° 53' 0.382 W
14,032.0	91.00	358.30	7,504.0	6,282.0	282.5	1,255,623.06	3,172,643.94	40° 2' 0.332 N	104° 53' 0.403 W
14,117.0	91.50	358.50	7,502.2	6,367.0	280.1	1,255,708.01	3,172,641.56	40° 2' 1.171 N	104° 53' 0.426 W

Company:	Anadarko	Local Co-ordinate Reference:	Well Xcel 12N-22HZ
Project:	Weld Co., Co (NAD 83)	TVD Reference:	Well @ 5042.0usft (Extreme 23)
Site:	Xcel 13-27HZ Pad	MD Reference:	Well @ 5042.0usft (Extreme 23)
Well:	Xcel 12N-22HZ	North Reference:	Grid
Wellbore:	Wellbore #1	Survey Calculation Method:	Minimum Curvature
Design:	OH	Database:	EDM 5000.1 Single User Db

Survey									
Measured Depth (usft)	Inclination (°)	Azimuth (°)	Vertical Depth (usft)	+N/-S (usft)	+E/-W (usft)	Map Northing (usft)	Map Easting (usft)	Latitude	Longitude
14,203.0	91.10	358.90	7,500.2	6,452.9	278.2	1,255,793.96	3,172,639.61	40° 2' 2.021 N	104° 53' 0.444 W
14,288.0	90.40	358.20	7,499.1	6,537.9	276.0	1,255,878.93	3,172,637.46	40° 2' 2.861 N	104° 53' 0.464 W
14,373.0	90.40	359.20	7,498.5	6,622.9	274.1	1,255,963.90	3,172,635.53	40° 2' 3.700 N	104° 53' 0.481 W
14,459.0	90.80	359.00	7,497.6	6,708.9	272.8	1,256,049.89	3,172,634.18	40° 2' 4.550 N	104° 53' 0.491 W
14,544.0	91.00	358.90	7,496.3	6,793.8	271.2	1,256,134.86	3,172,632.63	40° 2' 5.390 N	104° 53' 0.503 W
14,630.0	92.20	358.20	7,493.9	6,879.8	269.0	1,256,220.80	3,172,630.45	40° 2' 6.240 N	104° 53' 0.523 W
Last MWD @ 14630' MD / 7494' TVD									
14,685.0	92.20	358.20	7,491.8	6,934.7	267.3	1,256,275.73	3,172,628.72	40° 2' 6.783 N	104° 53' 0.541 W
PTD @ 14685' MD / 7492' TVD / 2144' FSL & 756' FWL Sec22T1NR67W									

Design Annotations					
Measured Depth (usft)	Vertical Depth (usft)	Local Coordinates			
		+N/-S (usft)	+E/-W (usft)	Comment	
1,177.0	1,176.8	-1.8	9.2	First MWD	
7,973.0	7,514.5	228.6	443.9	Actual 7" Csg @ 7973' MD / 7515' TVD/ 848' FWL & 722' Sec27T1NR6	
14,630.0	7,493.9	6,879.8	269.0	Last MWD @ 14630' MD / 7494' TVD	
14,685.0	7,491.8	6,934.7	267.3	PTD @ 14685' MD / 7492' TVD / 2144' FSL & 756' FWL Sec22T1NR67	

Checked By: _____	Approved By: _____	Date: _____
-------------------	--------------------	-------------



GENERAL COMMENT

4 3/4 - 6/7 - 8.0 - .81 RPG - 1.50 Fixed - Cavo - In Hole - Ser. # 47523
4 3/4 - 6/7 - 8.1 - .81 RPG - 1.22 Adj - IDS - Clean - Ser. # IDS47507
4 3/4 - 5/6 - 8.3 - 1 RPG - 1.22 Adj - IDS - Clean - Ser. # FDT47550

6 3/4 - 7/8 - 5.7 - .25 RPG - 2.00 Fixed - Spidle - Sent In - Ser.# FDT6508044R
6 3/4 - 7/8 - 5.0 - .28 RPG - 2.50 Fixed - IDS - Sent In - Ser.# IDS67502

Daily Report for JOB#: CO14016AN - Page 1 of 2

Start Time	End Time	Hours	Start Depth	End Depth	Delta Depth	ROP	Activity Code	COMMENT
02:30	02:50	0.33	14097	14172	75	225.00	Drilling	Drilling - (WOB:15;GPM :275;RPM:90)
02:50	03:00	0.17	14172	14172	0	.00	Survey & Conn.	Survey & Conn.@14117' Inc 91.5° Azm 358.5°
03:00	03:50	0.83	14172	14187	15	18.00	Sliding	Sliding - (WOB:15;GPM :275;TFO:160R))
03:50	04:15	0.42	14187	14258	71	170.40	Drilling	Drilling - (WOB:15;GPM :275;RPM:90)
04:15	04:25	0.17	14258	14258	0	.00	Survey & Conn.	Survey & Conn.@14203' Inc 91.1° Azm 358.9°
04:25	04:40	0.25	14258	14258	0	.00	Circulating	Circulating - Get SPR's
04:40	05:20	0.67	14258	14273	15	22.50	Sliding	Sliding - (WOB:15;GPM :275;TFO:160R)
05:20	05:40	0.33	14273	14343	70	210.00	Drilling	Drilling - (WOB:15;GPM :275;RPM:90)
05:40	05:50	0.17	14343	14343	0	.00	Survey & Conn.	Survey & Conn.@14288' Inc 90.4° Azm 358.2°
05:50	06:00	0.17	14343	14358	15	90.00	Drilling	Drilling - (WOB:15;GPM :275;RPM:90)
06:00	06:35	0.58	14358	14373	15	25.71	Sliding	Sliding - (WOB:15;GPM :275;TFO:180))
06:35	07:05	0.50	14373	14428	55	110.00	Drilling	Drilling - (WOB:15;GPM :275;RPM:90)
07:05	07:15	0.17	14428	14428	0	.00	Survey & Conn.	Survey & Conn.@14373' Inc 90.4° Azm 359.2°
07:15	07:35	0.33	14428	14443	15	45.00	Drilling	Drilling - (WOB:15;GPM :275;RPM:90)
07:35	08:08	0.55	14443	14458	15	27.27	Sliding	Sliding - (WOB:15;GPM :275;TFO:180))
08:08	08:35	0.45	14458	14514	56	124.44	Drilling	Drilling - (WOB:15;GPM :275;RPM:90)
08:35	08:43	0.13	14514	14514	0	.00	Survey & Conn.	Survey & Conn.@14459' Inc 90.8° Azm 359°
08:43	09:25	0.70	14514	14599	85	121.43	Drilling	Drilling - (WOB:15;GPM :275;RPM:90)
09:25	09:37	0.20	14599	14599	0	.00	Survey & Conn.	Survey & Conn.@14544' Inc 91° Azm 358.9°
09:37	10:00	0.38	14599	14685	86	224.35	Drilling	Drilling - (WOB:15;GPM :275;RPM:90)
10:00	10:10	0.17	14685	14685	0	.00	Survey & Conn.	Survey & Conn.@14630' Inc 92.2° Azm 358.2°
10:10	11:00	0.83	14685	14685	0	.00	Circulating	Circulating @ TD
11:00	11:30	0.50	14685	14685	0	.00	Other	Flow Check (Static)
11:30	12:45	1.25	14685	14685	0	.00	POOH	POOH - Short Trip @ TD
12:45	19:30	6.75	14685	14685	0	.00	Circulating	Circulating @ TD
19:30	24:00	4.50	14685	14685	0	.00	POOH	POOH @ TD