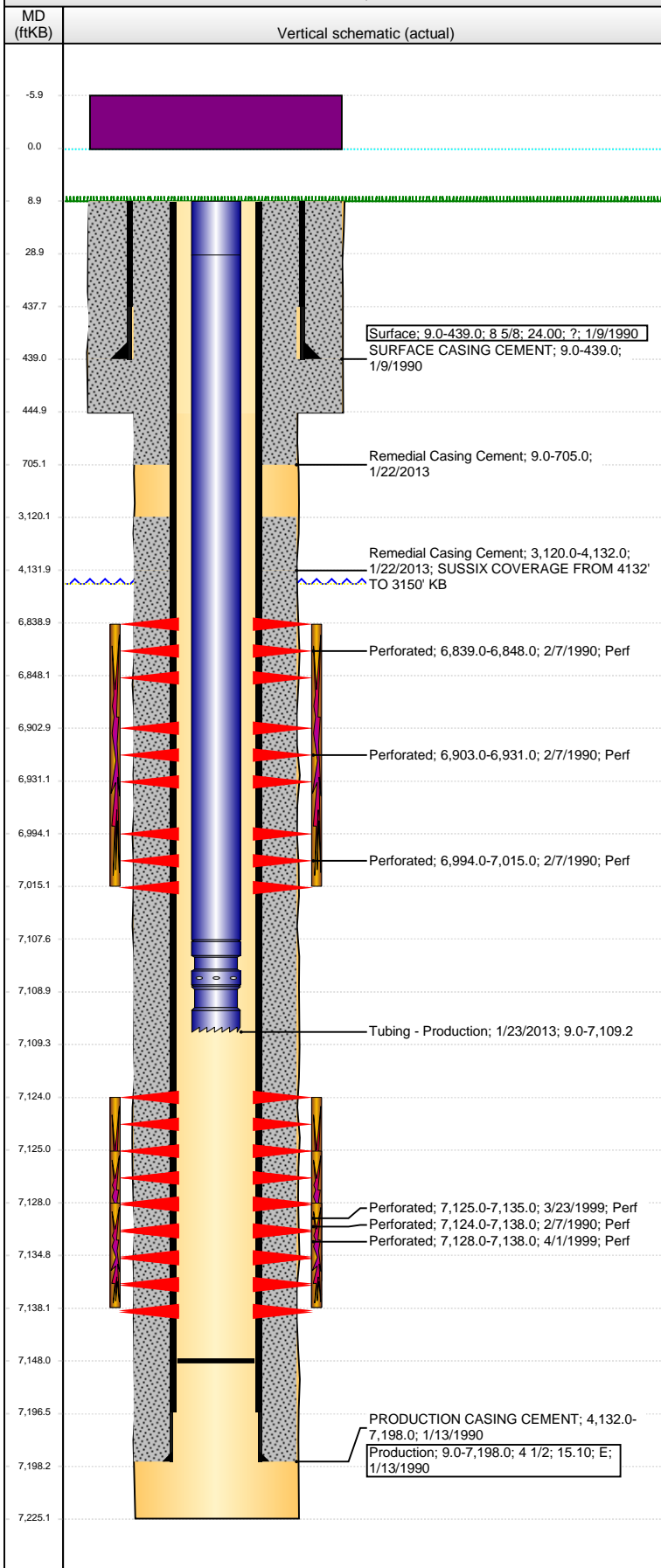


Well Name: BURKE 24-03

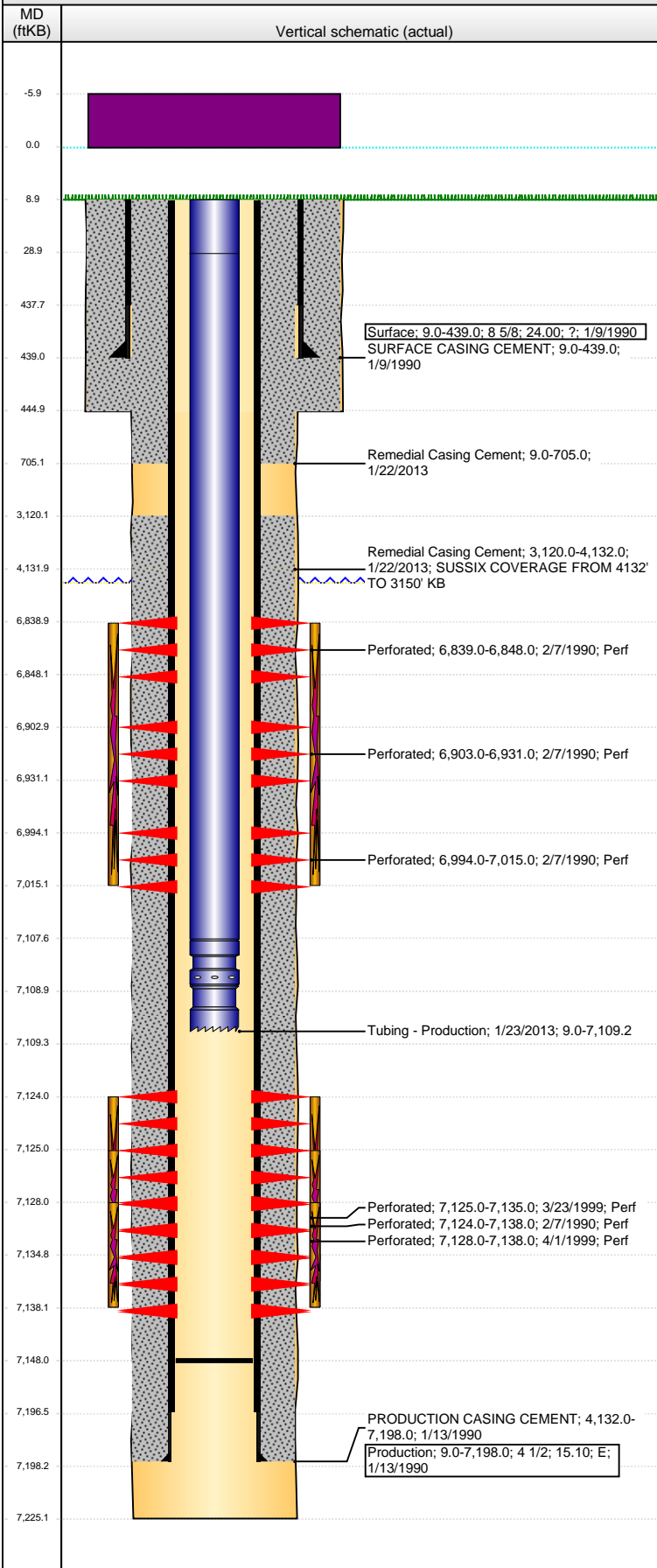
VERTICAL - ORIGINAL HOLE, 4/1/2014 2:36:20 PM



Well Header									
API		Business Unit		District		Well Config			
05-123-14522		WATTENBERG		15		VERTICAL			
Original KB Elevation (ft)		KB - GL / MSL (ftKB)		Spud Date		P & A Date			
4,839.00		9.00		1/8/1990					
Comment									
Directions To Well									
Congressional Location									
Quarter 1	Quarter 2	Quarter 3	Quarter 4	Section	Township	Twntshp N...	Range	Rng E/W Dir	
	NE	NE	SE	24	4	N	65	W	
Bottom Hole Location									
North-South Distance (ft)			From N or S Line		East-West Distance (ft)		From E or W Line		
Plug Back Total Depths									
Date	Depth (ftKB)	Method		Com					
1/22/1990	7,135.0	CASED HOLE LOG		DEPTH LOGGER ON CBL					
5/23/1990	7,174.0	TAG		CLEAN OUT TO LAND TUBING					
12/5/2005	7,148.0	TAG		TAG TO LAND TUBING					
12/27/2012	7,148.0	TAG		CLEAN OUT DOWN TO 7148 AND COULD NOT M...					
Wellbore Sections									
Section Des			Size (in)	Act Top, MD (ftKB)		Act Btm, MD (ftKB)			
SURFACE			12 1/4	9.0		445.0			
PRODUCTION			7 7/8	445.0		7,225.0			
Zone Statuses									
Zone Name	Status Date	Status		Job					
NIOBRARA	2/27/1990	PR		DRILLING/COMPLETION - ORIGINAL, 1/8/1990 00:00					
CODELL	2/27/1990	PR		DRILLING/COMPLETION - ORIGINAL, 1/8/1990 00:00					
CODELL	4/8/1999	PR		RE-FRAC, 3/19/1999 00:00					
Casing Strings									
Surface, 439.0ftKB									
Casing Description	Run Date	OD (in)	Wt/Len (l...)	Grade	Top, MD (ft...)	MD (ftKB)			
Surface	1/9/1990	8 5/8	24.00	?	9.0	439.0			
Production, 7,198.0ftKB									
Casing Description	Run Date	OD (in)	Wt/Len (l...)	Grade	Top, MD (ft...)	MD (ftKB)			
Production	1/13/1990	4 1/2	15.10	E	9.0	7,198.0			
Cement									
Description					Top Depth (ftKB)	Bottom Depth (ftKB)			
SURFACE CASING CEMENT					9.0	439.0			
Description					Top Depth (ftKB)	Bottom Depth (ftKB)			
PRODUCTION CASING CEMENT					4,132.0	7,198.0			
Description					Top Depth (ftKB)	Bottom Depth (ftKB)			
Remedial Casing Cement					9.0	705.0			
Description					Top Depth (ftKB)	Bottom Depth (ftKB)			
Remedial Casing Cement					3,120.0	4,132.0			
Tubing Components									
Item Des	OD (in)	Wt (lb/ft)	Grade	Jts	Len (ft)	Btm (ftKB)	Btm (TVD) (ftKB)		
Pup Joint	2 3/8	4.70	J-55	2	20.00	29.0			
Tubing	2 3/8	4.70	J-55	228	7,078.57	7,107.6			
Pump Seating Nipple	2 3/8	1.10		1	1.20	7,108.8			
Notched collar	2 3/8			1	0.40	7,109.2			
Perforation Data									
Zone	Bnch/St g	Entered Shot Total	Top (ftKB)	Btm (ftKB)	Date				
NIOBRARA, ORIGINAL HOLE	A	4	6,839.00	6,848.00	2/7/1990				
NIOBRARA, ORIGINAL HOLE	B	8	6,903.00	6,931.00	2/7/1990				
NIOBRARA, ORIGINAL HOLE	C	5	6,994.00	7,015.00	2/7/1990				
CODELL, ORIGINAL HOLE		42	7,124.00	7,138.00	2/7/1990				
CODELL, ORIGINAL HOLE		40	7,125.00	7,135.00	3/23/1999				
CODELL, ORIGINAL HOLE		40	7,128.00	7,138.00	4/1/1999				

Well Name: BURKE 24-03

VERTICAL - ORIGINAL HOLE, 4/1/2014 2:36:23 PM



Stimulations & Treatments

Date	Zone	Primary Job Type
2/9/1990	NIOBRARA, ORIGINAL HOLE	DRILLING/COMPLETION - ORIGINAL
Technical Result		
Tech Result Details		
Tech Result Note		
Comment		
2/9/1990	CODELL, ORIGINAL HOLE	DRILLING/COMPLETION - ORIGINAL
Technical Result		
Tech Result Details		
Tech Result Note		
Comment		
3/25/1999	CODELL, ORIGINAL HOLE	RE-FRAC
Technical Result		
Tech Result Details		
Tech Result Note		
Comment		
Failure		
Screen-Out		
Tech Result Note		
Comment		
SCREENED OUT WITH 143926# SAND AND 2436 BBLs FLUID		
4/1/1999	CODELL, ORIGINAL HOLE	RE-FRAC
Technical Result		
Tech Result Details		
Tech Result Note		
Comment		
4/2/1999	CODELL, ORIGINAL HOLE	RE-FRAC
Technical Result		
Tech Result Details		
Tech Result Note		
Comment		

Other In Hole

Run Date	Des	OD (in)	Top (ftKB)	Btm (ftKB)

Logs

Date	Type	Top, MD (ftKB)	Btm, MD (ftKB)
1/13/1990	COMPENSATED DENSITY	4,150.0	7,208.0
1/13/1990	INDUCTION	4,150.0	7,224.0
1/22/1990	CEMENT BOND	4,000.0	7,132.0
1/22/2013	CBL/CCL/GR	439.0	5,000.0
8/26/2013	GYRO	9.0	7,050.0