



March 28, 2013

Mr. Brandon Danforth
Environmental Specialist
WPX Energy Rocky Mountain LLC
1058 County Road 215
Parachute, Colorado 81635

**RE: Status Report: Drill Pads KP 32-17 & KP 24-17 COGCC Rule 317B Post DCPS
Operations Water Quality Sampling, November/December 2013**

Dear Mr. Danforth,

Western Water & Land, Inc. (WWL) conducted field reconnaissance in support of surface water sampling for the WPX Energy Rocky Mountain, LLC (WPX) KP 32-17 and KP 24-17 Drilling, Completion, Production, and Storage (DCPS) Operations locations in accordance with COGCC Rule 317B. DCPS Operations location KP 32-17 is located in SW1/4, NE1/4, Section 17, Township 6 S, Range 91 W 6th P.M. and DCPS Operations location KP 24-17 is located in SE1/4, SW1/4, Section 17, Township 6 S, Range 91 W 6th P.M. These locations fall within the Rule 317B 0.5-mile buffer zone for the Silt Surface Water Supply Area (SSWSA). This status report summarizes field activities and the sampling location conditions associated with the November/December 2013 sampling event for DCPS Operations at Drill Pads KP 32-17 and KP 24-17.

Previously established sampling locations for the SSWSA were provided to WWL by WPX. The sampling locations were previously established by HRL Compliance Solutions, Inc. (HCSI). Sampling locations downgradient of the referenced WPX DCPS Operations locations are shown in Figure 1. Sampling location K3 is the nearest downgradient sampling location to the referenced WPX DCPS Operations locations and was therefore identified as the preferred sample location.

Field Activities

Sampling location K3 was visited by WWL personnel on January 30, 2014. This location is located in an ephemeral drainage immediately downgradient of a culvert under the access road. There was no flowing or standing water found in the drainage. The next downgradient sampling location, K2, was not visited because WPX does not have property owner consent to access this location. Photographs from these field activities are included in Attachment A. As a result of these field conditions, no samples were collected during the November/December 2013 DCPS Operations sampling event.

If you have any questions or concerns, please contact me at (970) 242-0170.

Sincerely,

Bruce D. Smith
Principal Hydrogeologist

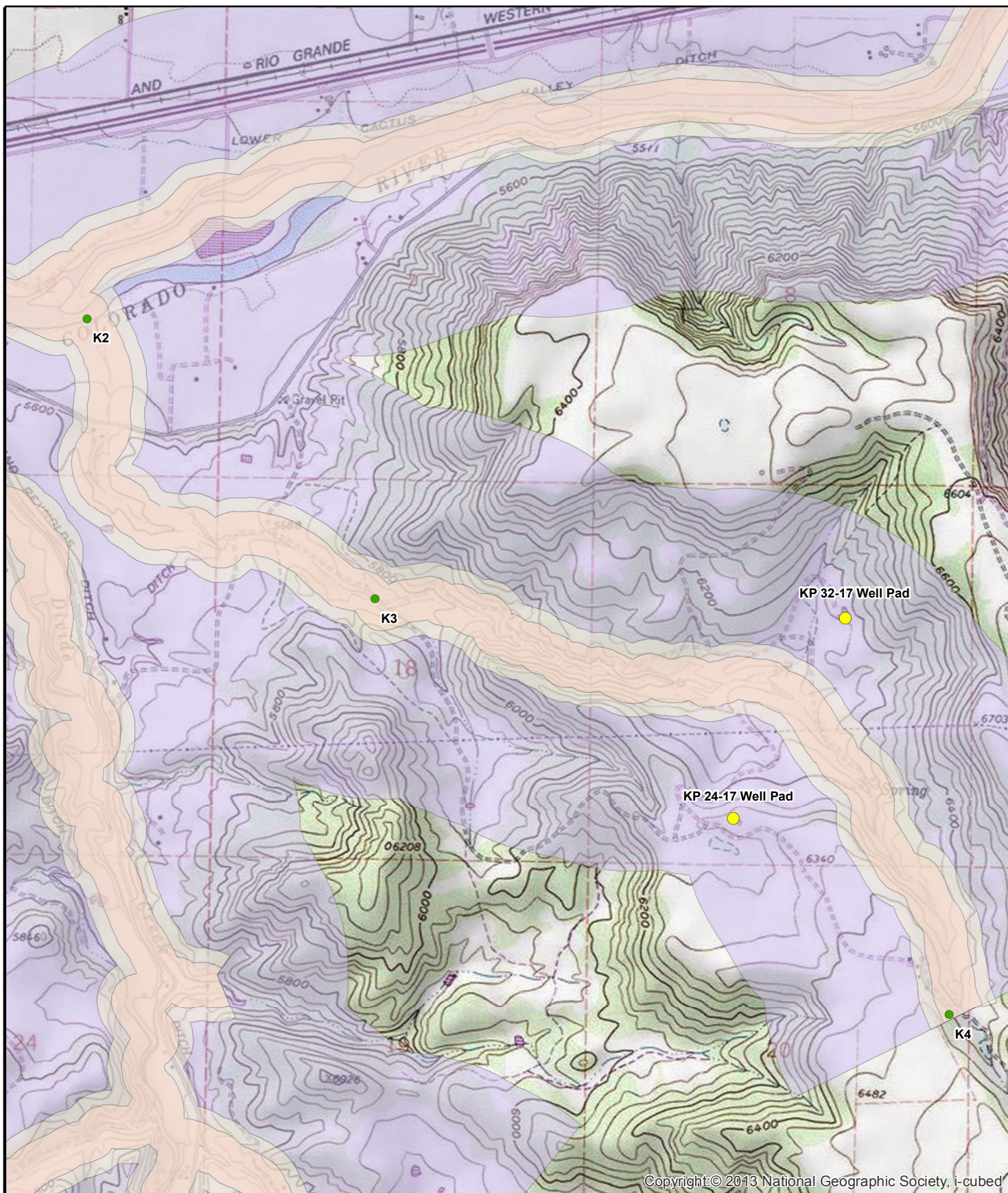
Mr. Brandon Danforth

March 28, 2013

Page 2

WESTERN WATER & LAND, INC.

Attachments



Legend

- 300ft Buffer
- 500ft Buffer
- Halfmile Buffer

- Established Sampling Sites



1:22,000

0 500 1,000 2,000 Feet

Figure 1: November/December 2013 DCPS Operations Locations KP 32-17 and KP 24-17 Rule 317 B. Location Map SW1/4, NE1/4, & SE1/4, SW1/4 S17, T6S, R91W, 6 PM

Garfield County, Colorado

WPX Energy Rocky Mountain LLC

Basemap Source: Esri ArcGIS Online



Western Water & Land, Inc.
Applications in Earth Science

Attachment A

January 2014 Field Photographs



Photograph 1. Sampling location K3 (January 30, 2014)



Photograph 2. Drainage downstream of sampling location K3 (January 30, 2014)