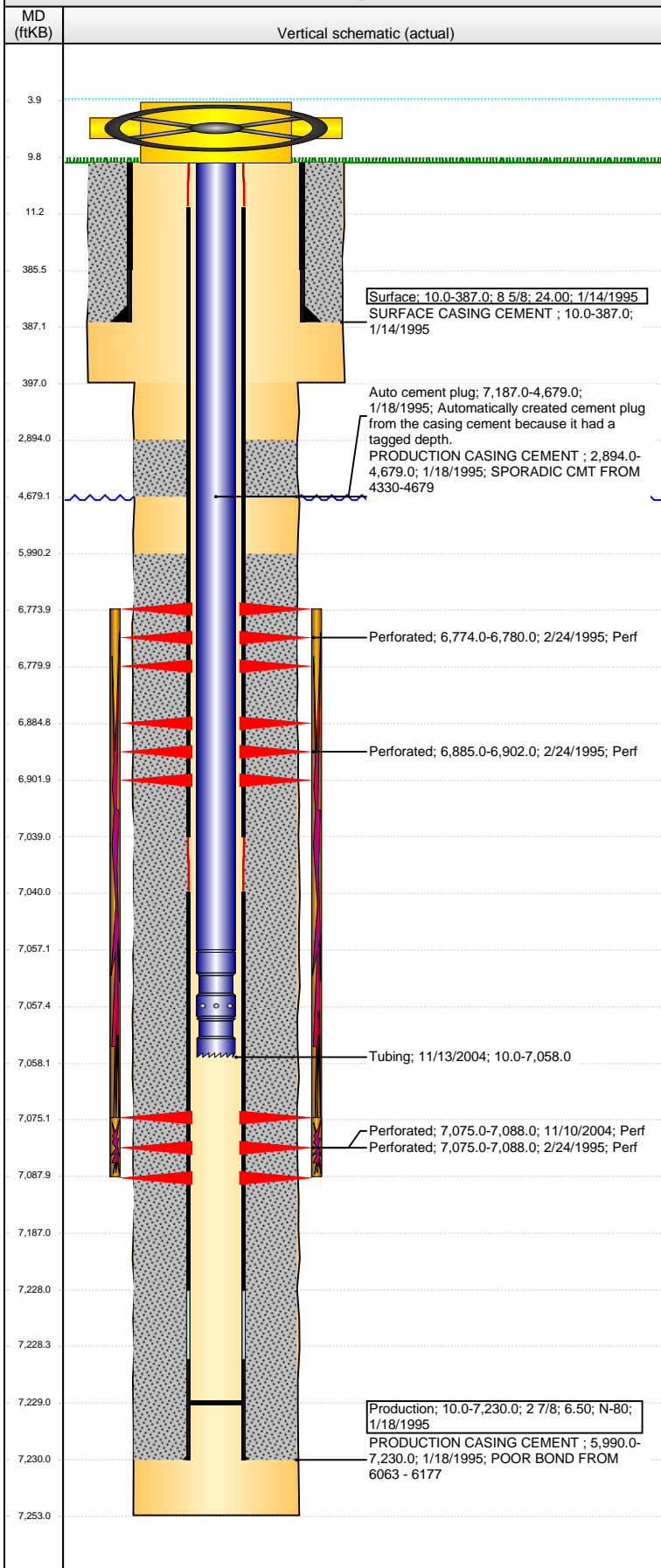


**Well Name: BICKLING E22-07**

VERTICAL - ORIGINAL HOLE, 4/1/2014 10:53:06 AM

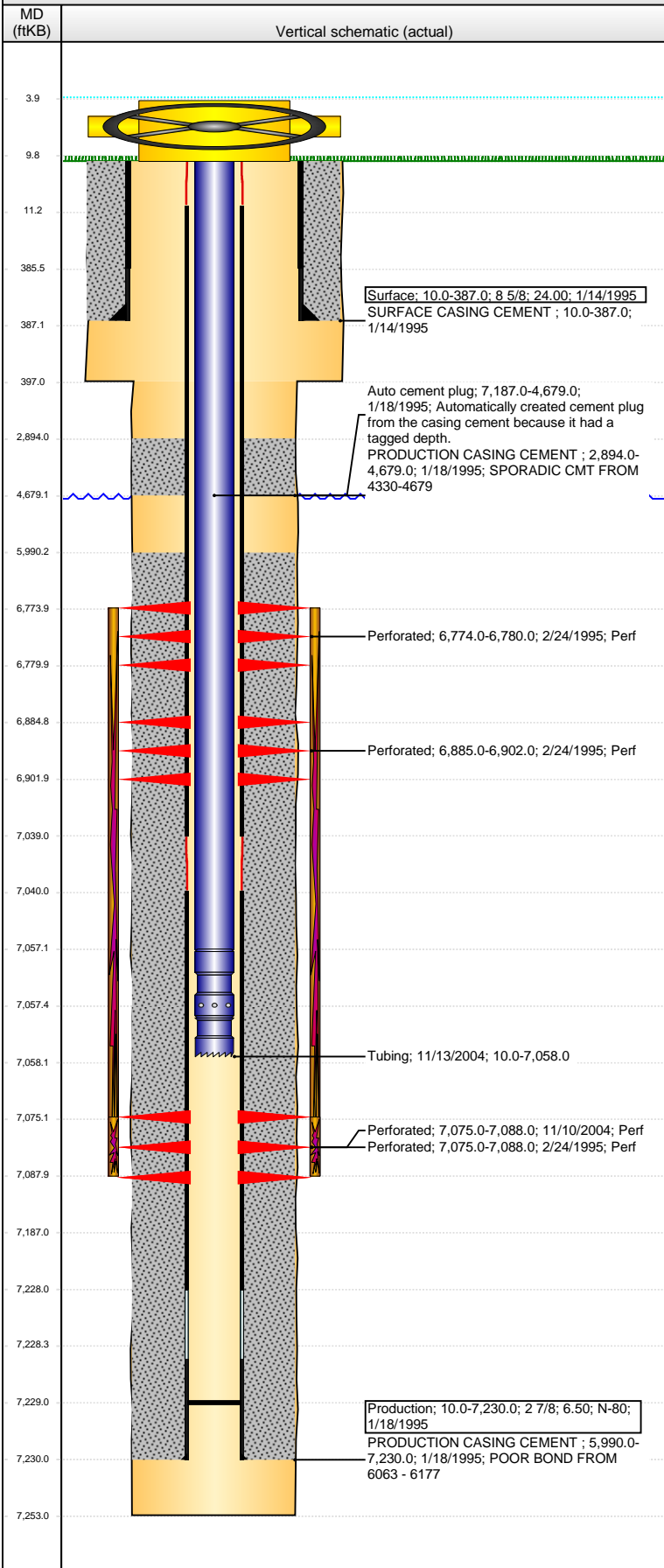


Well Header															
API		Business Unit		District		Well Config									
05-123-18787		WATTENBERG		15		VERTICAL									
Original KB Elevation (ft)		KB - GL / MSL (ftKB)		Spud Date		P & A Date									
4,745.00		10.00		1/14/1995											
Comment															
Directions To Well															
Congressional Location															
Quarter 1	Quarter 2	Quarter 3	Quarter 4	Section	Township	Twntshp N...	Range	Rng E/W Dir							
		SW	NE	22	6 N		65	W							
Bottom Hole Location															
North-South Distance (ft)			From N or S Line		East-West Distance (ft)			From E or W Line							
Plug Back Total Depths															
Date	Depth (ftKB)	Method		Com											
1/17/1995	7,229.0	CASING TALLY		SHOE W/ LATCHDOWN BAFFLE											
1/31/1995	7,187.0	CASED HOLE LOG		DEPTH LOGGER FROM CBL											
11/13/2004	7,229.0	TAG		DID NOT CLEAN OUT W/ RECENT TBG											
Wellbore Sections															
Section Des		Size (in)		Act Top, MD (ftKB)		Act Btm, MD (ftKB)									
SURFACE		12 1/4		10.0		397.0									
PRODUCTION		7 7/8		397.0		7,253.0									
Zone Statuses															
Zone Name		Status Date		Status		Job									
CODELL		4/12/1995		PR		DRILLING/COMPLETION - ORIGINAL, 1/14/1995 00:00									
CODELL		11/17/2004		PR		RE-FRAC, 11/6/2004 00:00									
NIOBRARA		4/12/1995		PR		DRILLING/COMPLETION - ORIGINAL, 1/14/1995 00:00									
Casing Strings															
Surface, 387.0ftKB															
Casing Description		Run Date		OD (in)		Wt/Len (L...)		Grade		Top, MD (ft...)		MD (ftKB)			
Surface		1/14/1995		8 5/8		24.00		N-80		10.0		387.0			
Production, 7,230.0ftKB															
Casing Description		Run Date		OD (in)		Wt/Len (L...)		Grade		Top, MD (ft...)		MD (ftKB)			
Production		1/18/1995		2 7/8		6.50		N-80		10.0		7,230.0			
Cement															
Description								Top Depth (ftKB)		Bottom Depth (ftKB)					
SURFACE CASING CEMENT								10.0		387.0					
Description								Top Depth (ftKB)		Bottom Depth (ftKB)					
PRODUCTION CASING CEMENT								2,894.0		4,679.0					
Description								Top Depth (ftKB)		Bottom Depth (ftKB)					
PRODUCTION CASING CEMENT								5,990.0		7,230.0					
Tubing Components															
Item Des		OD (in)		Wt (lb/ft)		Grade		Jts		Len (ft)		Btm (TVD)		ftKB	
Tubing		1.9		2.76		J-55		222		7,047.08		7,057.1			
Pump Seating		1.9								0.50		7,057.6			
Notched collar		1.9								0.45		7,058.0			
Perforation Data															
Zone		Bnch/St g		Entered Shot Total		Top (ftKB)		Btm (ftKB)		Date					
NIOBRARA, ORIGINAL HOLE		A		4		6,774.00		6,780.00		2/24/1995					
NIOBRARA, ORIGINAL HOLE		B		7		6,885.00		6,902.00		2/24/1995					
CODELL, ORIGINAL HOLE				11		7,075.00		7,088.00		2/24/1995					
CODELL, ORIGINAL HOLE				52		7,075.00		7,088.00		11/10/2004					
Stimulations & Treatments															
Date		Zone				Primary Job Type									
3/6/1995		NIOBRARA-CODELL, ORIGINAL HOLE				DRILLING/COMPLETION - ORIGINAL									
Technical Result			Tech Result Details			Tech Result Note									
Comment															
LIMITED ENTRY															
Date		Zone				Primary Job Type									
11/11/2004		CODELL, ORIGINAL HOLE				RE-FRAC									
Technical Result			Tech Result Details			Tech Result Note									
Comment															

**Well Name: BICKLING E22-07**

VERTICAL - ORIGINAL HOLE, 4/1/2014 10:53:08 AM

**Other In Hole**



Run Date	Des	OD (in)	Top (ftKB)	Btm (ftKB)

**Logs**

Date	Type	Top, MD (ftKB)	Btm, MD (ftKB)
1/17/1995	COMPENSATED DENSITY	3,050.0	7,260.0
1/17/1995	INDUCTION	3,050.0	7,260.0
1/31/1995	CBL/CCL/GR	2,750.0	7,180.0