



410 17th Street, Suite 1500
Denver, CO 80202
(720) 440-6100 phone
(720) 305-0804 fax

Bonanzacrk.com

March 18, 2013

Colorado Oil and Gas Conservation Commission
The Chancery Building
1120 Lincoln Street, Suite 801
Denver, CO 80203

Attn: Director Matt Lepore

Re: Notice of 318A.a.(4)D. Horizontal Wellbore Spacing Unit Proposal
North Platte O-K-24HNB
SHL: SESW (461' FSL, 1399 FWL) Sec 24-5N-63W, 6TH PM
Top of Production: SESW (531' FSL, 2628' FWL) Sec 24-5N-63W, 6TH PM
Bottom of Production: NENW (470' FNL, 2692' FWL) Sec 24-5N-63W, 6TH PM
Weld County, Colorado

Director Lepore:

Bonanza Creek Energy, Inc. (Bonanza) intends to permit, drill and operate the referenced Niobrara Horizontal Well. As defined by Colorado Oil and Gas Conservation Commission (COGCC) Rule 318A.a.(4)D., Bonanza proposes the following wellbore spacing unit:

E/2W/2 & W/2E/2 Sec 24-T5N-R63W 6th PM containing 320 acres more or less

Bonanza has notified the other owners in the unit and no objections were received. Copies of the notifications are maintained in Bonanza's files.

Bonanza respectfully requests that you review the enclosed wellbore spacing unit documentation and approve the referenced APD.

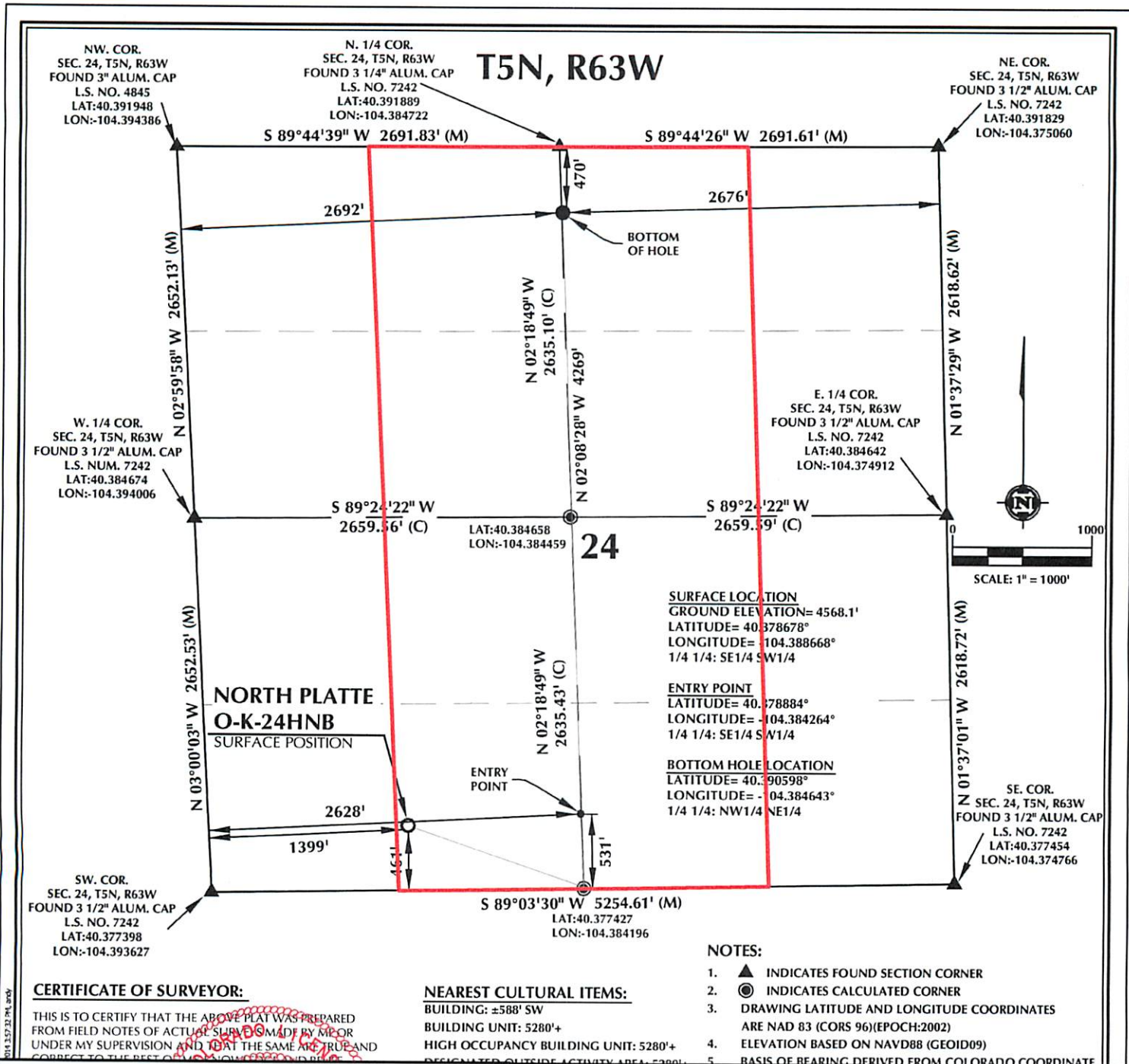
Please do not hesitate to call or email me, directly, at (720) 440-6100 or KCaplan@bonanzacrk.com, should you have any questions pertaining to this matter.

Thank you for your cooperation.

Sincerely,
BONANZA CREEK ENERGY, INC.
BONANZA CREEK ENERGY OPERATING COMPANY, LLC

A handwritten signature in black ink, appearing to read 'KCaplan', is written over the typed name.

Keith Caplan
Sr. Regulatory Specialist

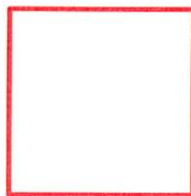


CERTIFICATE OF SURVEYOR:

THIS IS TO CERTIFY THAT THE ABOVE PLAT WAS PREPARED FROM FIELD NOTES OF ACTUAL SURVEY MADE BY ME OR UNDER MY SUPERVISION AND THAT THE SAME ARE TRUE AND CORRECT TO THE BEST OF MY KNOWLEDGE AND BELIEF.

NEAREST CULTURAL ITEMS:

BUILDING: ±588' SW
 BUILDING UNIT: 5280'+
 HIGH OCCUPANCY BUILDING UNIT: 5280'+
 DESIGNATED OUTSIDE ACTIVITY AREA: 5280'+



Wellbore Spacing Unit Outline

Wellbore Spacing Unit Map

18 February 2014 ksc

North Platte O-K-24HNB
 E/2W/2 & W/2E/2 Sec 24-T5N-R63W 6th PM
 Weld County, Colorado