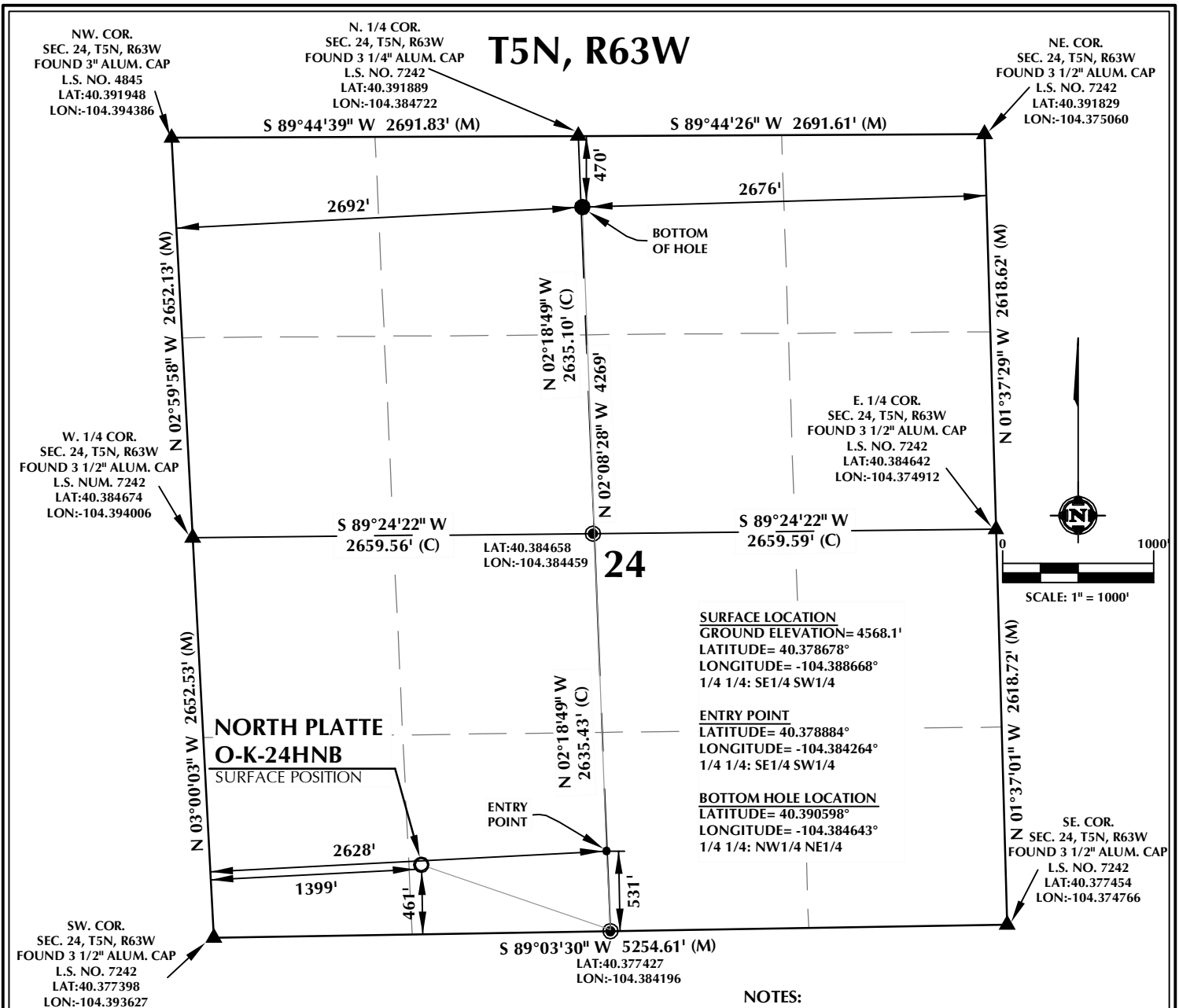


K:\BONANZA CREEK\2013_94_2014_WELL_STAKING\PLAT\NORTH PLATTE J-24\PLAT.dwg, 11/4/2014 3:57:32 PM, andy



WELL PAD - NORTH PLATTE J-24

**NORTH PLATTE O-K-24HNB
WELL LOCATION CERTIFICATE**
461' FSL & 1399' FWL SESW (SURFACE)
531' FSL & 2628' FWL SESW (ENTRY POINT)
470' FNL & 2676' FEL NWNE (BOTTOM)
LOCATED IN SECTION 24
T5N, R63W, 6TH P.M.
WELD COUNTY, COLORADO

 **BONANZA
CREEK**
410 17th Street, Suite 1400
Denver, Colorado 80202



CONSULTING, LLC

SHERIDAN OFFICE
2155 North Main Street
Sheridan, Wyoming 82801
Phone 307-674-0609

LOVELAND OFFICE
1635 Foxtrail Drive, Suite 204
Loveland, Colorado 80538
Phone 970-776-4331

DRAFTED BY:	LMO	CHECKED BY:	BJR
DATE DRAFTED:	1/14/14	DATE SURVEYED:	12/19/13
REVISED:		FILE NAME:	13-94