

BONANZA CREEK ENERGY INC.

**WELD COUNTY, COLORADO
SE SW SEC. 24 T5N R63W 6th P.M.
NORTH PLATTE O-K-24HC**

ORIGINAL WELLBORE

16 January, 2014

Plan: PROPOSAL #1





Project: WELD COUNTY, COLORADO
 Site: SE SW SEC. 24 T5N R63W 6th P.M.
 Well: NORTH PLATTE O-K-24HC
 Wellbore: ORIGINAL WELLBORE
 Design: PROPOSAL #1

ANNOTATIONS

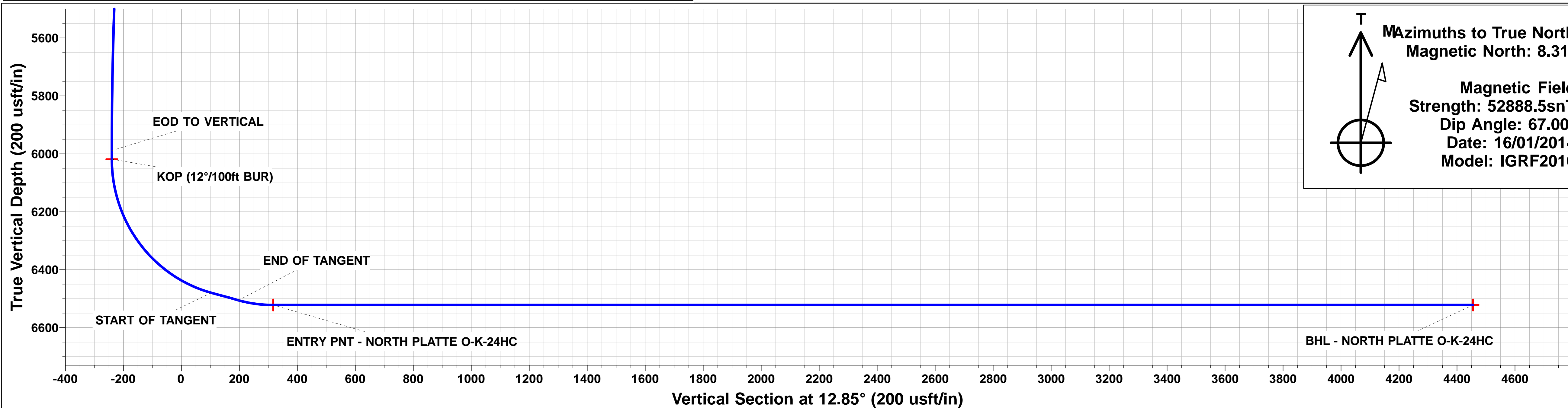
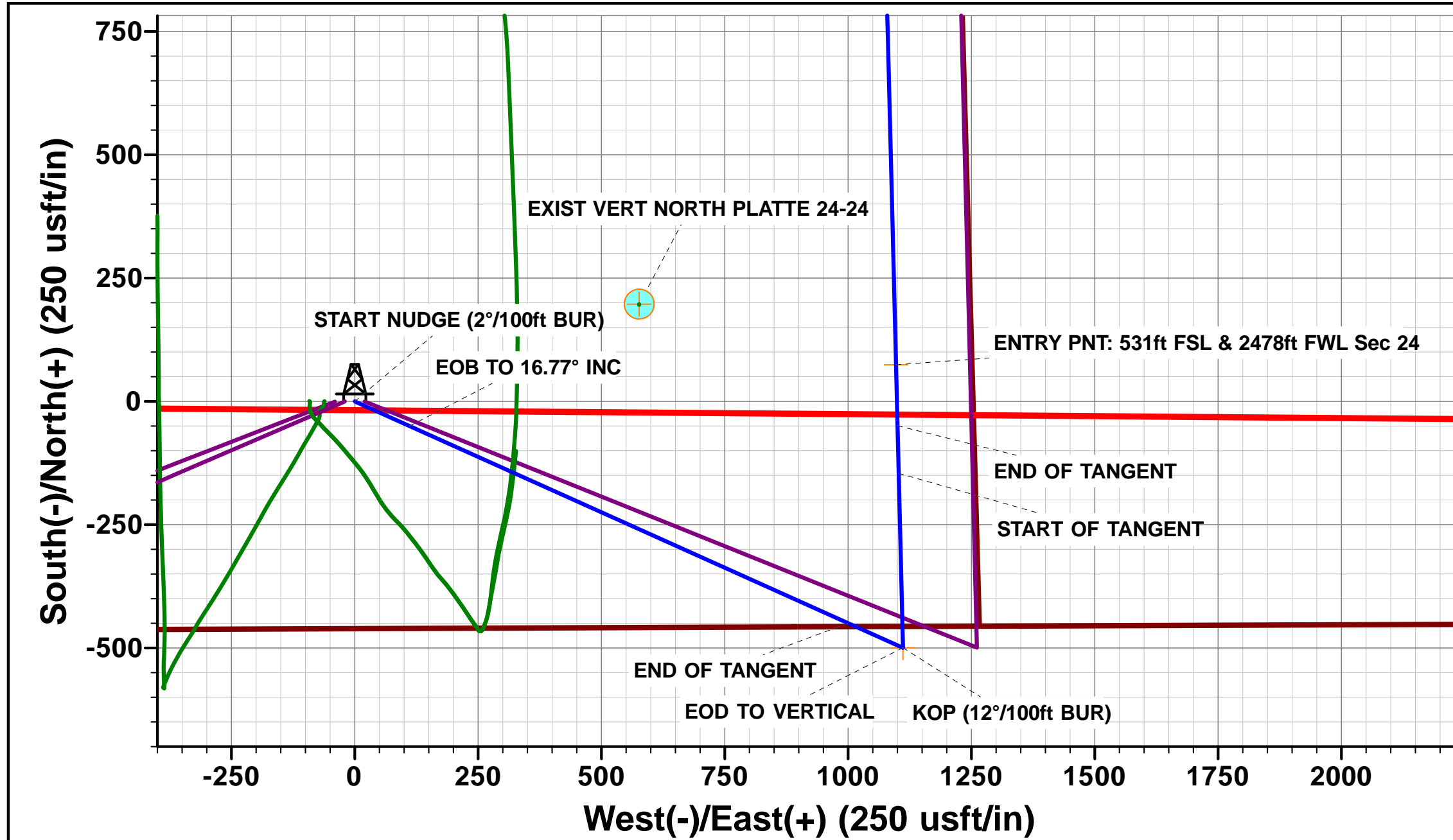
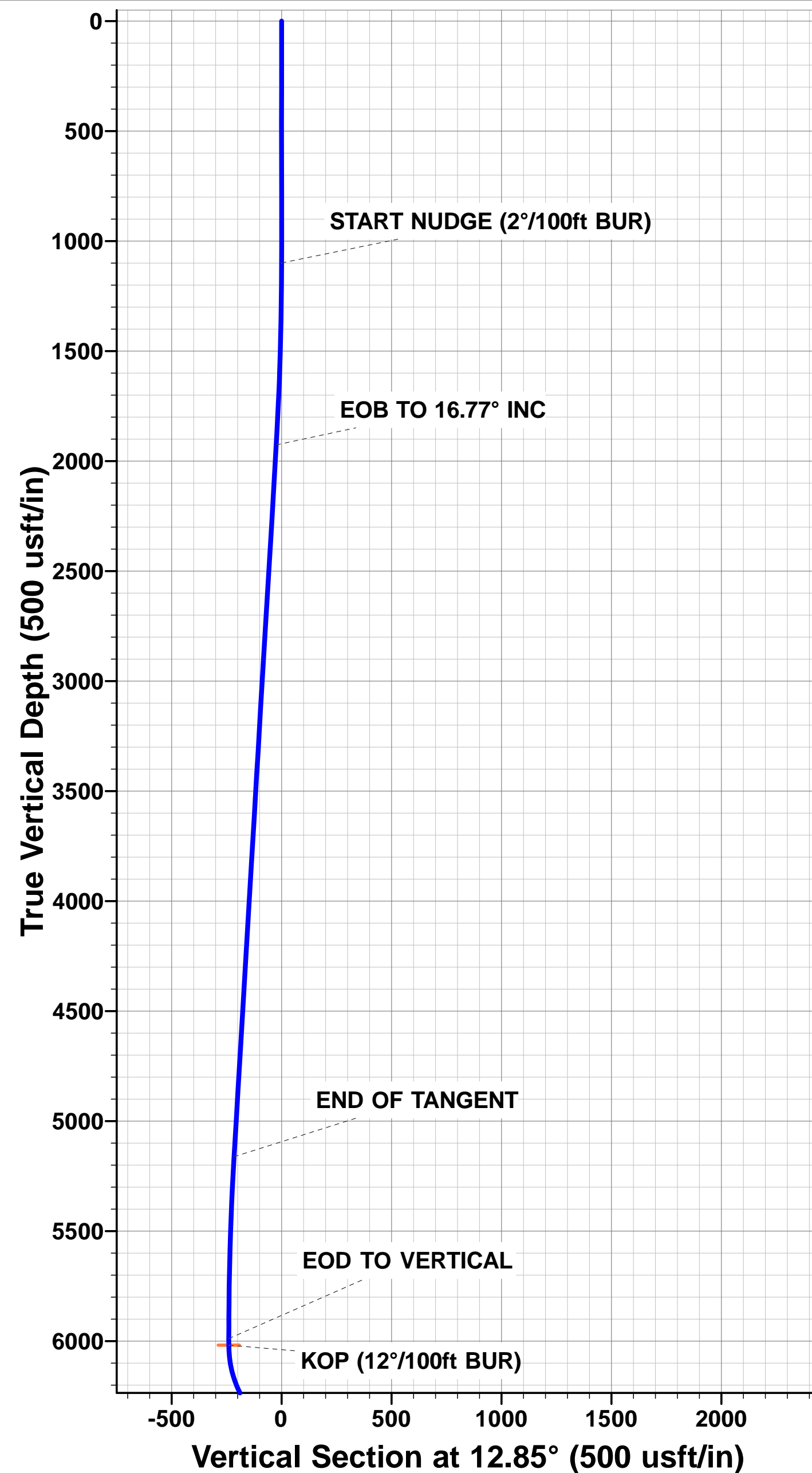
TVD	MD	Inc	Azi	+N/-S	+E/-W	VSec	Dep	Annotation
0.0	0.0	0.00	0.00	0.0	0.0	0.0	0.0	W/C: 461ft FSL & 1379ft FWL Sec 24
1100.0	1100.0	0.00	0.00	0.0	0.0	0.0	0.0	START NUDDGE (2°/100ft BUR)
1926.5	1938.4	16.77	114.20	-49.9	111.1	-24.0	121.8	EOB TO 16.77° INC
5162.1	5317.7	16.77	114.20	-449.6	1000.4	-215.8	1096.8	END OF TANGENT
5988.6	6156.1	0.00	0.00	-499.5	1111.5	-239.8	1218.6	EOD TO VERTICAL
6018.6	6186.1	0.00	0.00	-499.5	1111.5	-239.8	1218.6	KOP (12°/100ft BUR)
6479.8	6811.1	75.00	358.57	-145.7	1102.7	103.2	1572.5	START OF TANGENT
6505.7	6911.1	75.00	358.57	-49.2	1100.3	196.8	1669.1	END OF TANGENT
6521.9	7036.1	90.00	358.57	74.4	1097.2	316.5	1792.6	ENTRY PNT: 531ft FSL & 2478ft FWL Sec 24
6521.9	11306.8	90.00	358.58	4343.7	990.8	4455.3	6063.3	BHL: 470ft FNL & 2542ft FWL Sec 24

LOCAL COORDINATES:

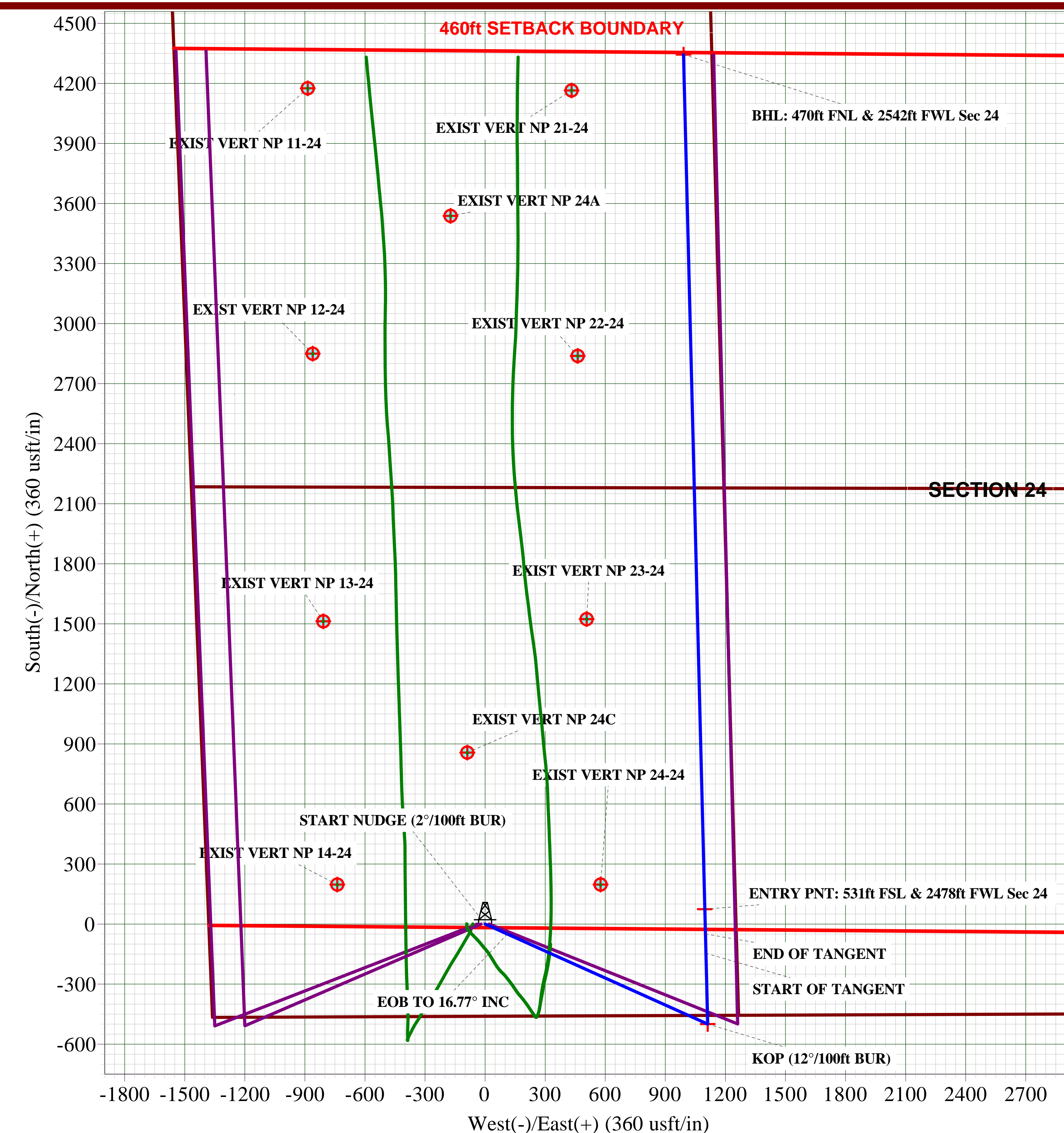
SHL: 461ft FSL & 1379ft FWL Sec 24
 7" ICP: ft 531ft FSL & 2478ft FWL Sec 24
 BHL: 470ft FNL & 2542ft FWL Sec 24

WELLBORE TARGET DETAILS (LAT/LONG)

Name	TVD	+N/-S	+E/-W	Latitude	Longitude
BTV - NORTH PLATTE O-K-24HC	6018.6	-499.5	1111.5	40.377307	-104.384751
BHL - NORTH PLATTE O-K-24HC	6521.9	4343.7	990.8	40.390601	-104.385183
ENTRY PNT - NORTH PLATTE O-K-24HC	6521.9	74.4	1097.2	40.378882	-104.384802



True North (T)
 Magnetic North: 8.31°
 Magnetic Field Strength: 52888.5snT
 Dip Angle: 67.00°
 Date: 16/01/2014
 Model: IGRF2010



Planning Report



Database:	EDM 5000.1 Single User Db	Local Co-ordinate Reference:	Well NORTH PLATTE O-K-24HC
Company:	BONANZA CREEK ENERGY INC.	TVD Reference:	KB-EST @ 4584.9usft (Original Well Elev)
Project:	WELD COUNTY, COLORADO	MD Reference:	KB-EST @ 4584.9usft (Original Well Elev)
Site:	SE SW SEC. 24 T5N R63W 6th P.M.	North Reference:	True
Well:	NORTH PLATTE O-K-24HC	Survey Calculation Method:	Minimum Curvature
Wellbore:	ORIGINAL WELLBORE		
Design:	PROPOSAL #1		

Project WELD COUNTY, COLORADO			
Map System:	US State Plane 1983	System Datum:	Mean Sea Level
Geo Datum:	North American Datum 1983		
Map Zone:	Colorado Northern Zone		Using geodetic scale factor

Site SE SW SEC. 24 T5N R63W 6th P.M.			
Site Position:		Northing:	1,382,731.88 usft
From:	Lat/Long	Easting:	3,309,546.55 usft
Position Uncertainty:	0.0 usft	Slot Radius:	1.10000ft
		Latitude:	40.378677
		Longitude:	-104.388884
		Grid Convergence:	0.72 °

Well NORTH PLATTE O-K-24HC			
Well Position	+N/-S	0.3 usft	Northing:
	+E/-W	40.1 usft	Easting:
			1,382,732.72 usft
			Latitude:
			40.378678
			Longitude:
			-104.388740
Position Uncertainty		0.0 usft	Wellhead Elevation:
			usft
			Ground Level:
			4,567.9 usft

Wellbore ORIGINAL WELLBORE					
Magnetics	Model Name	Sample Date	Declination (°)	Dip Angle (°)	Field Strength (nT)
	IGRF2010	16/01/2014	8.31	67.00	52,889

Design PROPOSAL #1				
Audit Notes:				
Version:	Phase:	PROTOTYPE	Tie On Depth:	0.0
Vertical Section:	Depth From (TVD) (usft)	+N/-S (usft)	+E/-W (usft)	Direction (°)
	0.0	0.0	0.0	12.85

Plan Sections											
MD (usft)	Inc (°)	Azi (°)	Vertical Depth	SS (usft)	+N/-S (usft)	+E/-W (usft)	Dogleg Rate (°/100usft)	Build Rate (°/100usft)	Turn Rate (°/100usft)	TFO (°)	Target
0.0	0.00	0.00	0.0	-4,584.9	0.0	0.0	0.00	0.00	0.00	0.00	
1,100.0	0.00	0.00	1,100.0	-3,484.9	0.0	0.0	0.00	0.00	0.00	0.00	
1,938.4	16.77	114.20	1,926.5	-2,658.4	-49.9	111.1	2.00	2.00	0.00	114.20	
5,317.7	16.77	114.20	5,162.1	577.2	-449.6	1,000.4	0.00	0.00	0.00	0.00	
6,156.1	0.00	0.00	5,988.6	1,403.7	-499.5	1,111.5	2.00	-2.00	0.00	180.00	
6,186.1	0.00	0.00	6,018.6	1,433.7	-499.5	1,111.5	0.00	0.00	0.00	0.00	BTV - NORTH PLA
6,811.1	75.00	358.57	6,479.8	1,894.9	-145.7	1,102.7	12.00	12.00	0.00	358.57	
6,911.1	75.00	358.57	6,505.7	1,920.8	-49.2	1,100.3	0.00	0.00	0.00	0.00	
7,036.1	90.00	358.57	6,521.9	1,937.0	74.4	1,097.2	12.00	12.00	0.00	0.00	
11,306.8	90.00	358.58	6,521.9	1,937.0	4,343.7	990.8	0.00	0.00	0.00	79.07	BHL - NORTH PLA

Planning Report



Database:	EDM 5000.1 Single User Db	Local Co-ordinate Reference:	Well NORTH PLATTE O-K-24HC
Company:	BONANZA CREEK ENERGY INC.	TVD Reference:	KB-EST @ 4584.9usft (Original Well Elev)
Project:	WELD COUNTY, COLORADO	MD Reference:	KB-EST @ 4584.9usft (Original Well Elev)
Site:	SE SW SEC. 24 T5N R63W 6th P.M.	North Reference:	True
Well:	NORTH PLATTE O-K-24HC	Survey Calculation Method:	Minimum Curvature
Wellbore:	ORIGINAL WELLBORE		
Design:	PROPOSAL #1		

Planned Survey

MD (usft)	Inc (°)	Azi (°)	TVD (usft)	SS (usft)	+N/-S (usft)	+E/-W (usft)	Vertical Section (usft)	Dogleg Rate (°/100usft)	Build Rate (°/100usft)	Turn Rate (°/100usft)
W/C: 461ft FSL & 1379ft FWL Sec 24										
0.0	0.00	0.00	0.0	4,584.90	0.0	0.0	0.0	0.00	0.00	0.00
100.0	0.00	0.00	100.0	4,484.90	0.0	0.0	0.0	0.00	0.00	0.00
200.0	0.00	0.00	200.0	4,384.90	0.0	0.0	0.0	0.00	0.00	0.00
300.0	0.00	0.00	300.0	4,284.90	0.0	0.0	0.0	0.00	0.00	0.00
400.0	0.00	0.00	400.0	4,184.90	0.0	0.0	0.0	0.00	0.00	0.00
500.0	0.00	0.00	500.0	4,084.90	0.0	0.0	0.0	0.00	0.00	0.00
600.0	0.00	0.00	600.0	3,984.90	0.0	0.0	0.0	0.00	0.00	0.00
700.0	0.00	0.00	700.0	3,884.90	0.0	0.0	0.0	0.00	0.00	0.00
800.0	0.00	0.00	800.0	3,784.90	0.0	0.0	0.0	0.00	0.00	0.00
900.0	0.00	0.00	900.0	3,684.90	0.0	0.0	0.0	0.00	0.00	0.00
1,000.0	0.00	0.00	1,000.0	3,584.90	0.0	0.0	0.0	0.00	0.00	0.00
START NUDGE (2°/100ft BUR)										
1,100.0	0.00	0.00	1,100.0	3,484.90	0.0	0.0	0.0	0.00	0.00	0.00
1,200.0	2.00	114.20	1,200.0	3,384.92	-0.7	1.6	-0.3	2.00	2.00	0.00
1,300.0	4.00	114.20	1,299.8	3,285.06	-2.9	6.4	-1.4	2.00	2.00	0.00
1,400.0	6.00	114.20	1,399.5	3,185.45	-6.4	14.3	-3.1	2.00	2.00	0.00
1,500.0	8.00	114.20	1,498.7	3,086.20	-11.4	25.4	-5.5	2.00	2.00	0.00
1,600.0	10.00	114.20	1,597.5	2,987.43	-17.8	39.7	-8.6	2.00	2.00	0.00
1,700.0	12.00	114.20	1,695.6	2,889.28	-25.7	57.1	-12.3	2.00	2.00	0.00
1,800.0	14.00	114.20	1,793.1	2,791.84	-34.9	77.6	-16.7	2.00	2.00	0.00
1,900.0	16.00	114.20	1,889.6	2,695.26	-45.5	101.2	-21.8	2.00	2.00	0.00
EOB TO 16.77° INC										
1,938.4	16.77	114.20	1,926.5	2,658.39	-49.9	111.1	-24.0	2.00	2.00	0.00
2,000.0	16.77	114.20	1,985.5	2,599.44	-57.2	127.3	-27.5	0.00	0.00	0.00
2,100.0	16.77	114.20	2,081.2	2,503.69	-69.0	153.6	-33.1	0.00	0.00	0.00
2,200.0	16.77	114.20	2,177.0	2,407.94	-80.9	179.9	-38.8	0.00	0.00	0.00
2,300.0	16.77	114.20	2,272.7	2,312.19	-92.7	206.3	-44.5	0.00	0.00	0.00
2,400.0	16.77	114.20	2,368.5	2,216.45	-104.5	232.6	-50.2	0.00	0.00	0.00
2,500.0	16.77	114.20	2,464.2	2,120.70	-116.3	258.9	-55.9	0.00	0.00	0.00
2,600.0	16.77	114.20	2,560.0	2,024.95	-128.2	285.2	-61.5	0.00	0.00	0.00
2,700.0	16.77	114.20	2,655.7	1,929.20	-140.0	311.5	-67.2	0.00	0.00	0.00
2,800.0	16.77	114.20	2,751.4	1,833.45	-151.8	337.8	-72.9	0.00	0.00	0.00
2,900.0	16.77	114.20	2,847.2	1,737.71	-163.6	364.2	-78.6	0.00	0.00	0.00
3,000.0	16.77	114.20	2,942.9	1,641.96	-175.5	390.5	-84.2	0.00	0.00	0.00
3,100.0	16.77	114.20	3,038.7	1,546.21	-187.3	416.8	-89.9	0.00	0.00	0.00
3,200.0	16.77	114.20	3,134.4	1,450.46	-199.1	443.1	-95.6	0.00	0.00	0.00
3,300.0	16.77	114.20	3,230.2	1,354.72	-211.0	469.4	-101.3	0.00	0.00	0.00
3,400.0	16.77	114.20	3,325.9	1,258.97	-222.8	495.7	-107.0	0.00	0.00	0.00
3,500.0	16.77	114.20	3,421.7	1,163.22	-234.6	522.0	-112.6	0.00	0.00	0.00
3,600.0	16.77	114.20	3,517.4	1,067.47	-246.4	548.4	-118.3	0.00	0.00	0.00
3,700.0	16.77	114.20	3,613.2	971.72	-258.3	574.7	-124.0	0.00	0.00	0.00
3,800.0	16.77	114.20	3,708.9	875.98	-270.1	601.0	-129.7	0.00	0.00	0.00
3,900.0	16.77	114.20	3,804.7	780.23	-281.9	627.3	-135.3	0.00	0.00	0.00
4,000.0	16.77	114.20	3,900.4	684.48	-293.7	653.6	-141.0	0.00	0.00	0.00
4,100.0	16.77	114.20	3,996.2	588.73	-305.6	679.9	-146.7	0.00	0.00	0.00
4,200.0	16.77	114.20	4,091.9	492.99	-317.4	706.3	-152.4	0.00	0.00	0.00
4,300.0	16.77	114.20	4,187.7	397.24	-329.2	732.6	-158.0	0.00	0.00	0.00
4,400.0	16.77	114.20	4,283.4	301.49	-341.0	758.9	-163.7	0.00	0.00	0.00
4,500.0	16.77	114.20	4,379.2	205.74	-352.9	785.2	-169.4	0.00	0.00	0.00
4,600.0	16.77	114.20	4,474.9	109.99	-364.7	811.5	-175.1	0.00	0.00	0.00
4,700.0	16.77	114.20	4,570.7	14.25	-376.5	837.8	-180.8	0.00	0.00	0.00
4,800.0	16.77	114.20	4,666.4	-81.50	-388.3	864.2	-186.4	0.00	0.00	0.00

Planning Report



Database:	EDM 5000.1 Single User Db	Local Co-ordinate Reference:	Well NORTH PLATTE O-K-24HC
Company:	BONANZA CREEK ENERGY INC.	TVD Reference:	KB-EST @ 4584.9usft (Original Well Elev)
Project:	WELD COUNTY, COLORADO	MD Reference:	KB-EST @ 4584.9usft (Original Well Elev)
Site:	SE SW SEC. 24 T5N R63W 6th P.M.	North Reference:	True
Well:	NORTH PLATTE O-K-24HC	Survey Calculation Method:	Minimum Curvature
Wellbore:	ORIGINAL WELLBORE		
Design:	PROPOSAL #1		

Planned Survey

MD (usft)	Inc (°)	Azi (°)	TVD (usft)	SS (usft)	+N/-S (usft)	+E/-W (usft)	Vertical Section (usft)	Dogleg Rate (°/100usft)	Build Rate (°/100usft)	Turn Rate (°/100usft)
4,900.0	16.77	114.20	4,762.1	-177.25	-400.2	890.5	-192.1	0.00	0.00	0.00
5,000.0	16.77	114.20	4,857.9	-273.00	-412.0	916.8	-197.8	0.00	0.00	0.00
5,100.0	16.77	114.20	4,953.6	-368.74	-423.8	943.1	-203.5	0.00	0.00	0.00
5,200.0	16.77	114.20	5,049.4	-464.49	-435.6	969.4	-209.1	0.00	0.00	0.00
5,300.0	16.77	114.20	5,145.1	-560.24	-447.5	995.7	-214.8	0.00	0.00	0.00
END OF TANGENT										
5,317.7	16.77	114.20	5,162.1	-577.19	-449.6	1,000.4	-215.8	0.00	0.00	0.00
5,400.0	15.12	114.20	5,241.2	-656.32	-458.8	1,021.0	-220.3	2.00	-2.00	0.00
5,500.0	13.12	114.20	5,338.2	-753.29	-468.8	1,043.3	-225.1	2.00	-2.00	0.00
5,600.0	11.12	114.20	5,436.0	-851.06	-477.4	1,062.4	-229.2	2.00	-2.00	0.00
5,700.0	9.12	114.20	5,534.4	-949.49	-484.6	1,078.4	-232.7	2.00	-2.00	0.00
5,800.0	7.12	114.20	5,633.4	-1,048.49	-490.4	1,091.3	-235.4	2.00	-2.00	0.00
5,900.0	5.12	114.20	5,732.8	-1,147.91	-494.8	1,101.1	-237.5	2.00	-2.00	0.00
6,000.0	3.12	114.20	5,832.5	-1,247.65	-497.8	1,107.6	-239.0	2.00	-2.00	0.00
6,100.0	1.12	114.20	5,932.5	-1,347.57	-499.3	1,111.0	-239.7	2.00	-2.00	0.00
EOD TO VERTICAL										
6,156.1	0.00	0.00	5,988.6	-1,403.70	-499.5	1,111.5	-239.8	2.00	-2.00	0.00
KOP (12°/100ft BUR)										
6,186.1	0.00	0.00	6,018.6	-1,433.70	-499.5	1,111.5	-239.8	0.00	0.00	0.00
6,200.0	1.66	358.57	6,032.5	-1,447.57	-499.3	1,111.5	-239.6	12.00	12.00	0.00
6,300.0	13.66	358.57	6,131.4	-1,546.49	-486.0	1,111.2	-226.7	12.00	12.00	0.00
6,400.0	25.66	358.57	6,225.4	-1,640.49	-452.4	1,110.3	-194.1	12.00	12.00	0.00
6,500.0	37.66	358.57	6,310.3	-1,725.45	-400.0	1,109.0	-143.4	12.00	12.00	0.00
6,600.0	49.66	358.57	6,382.6	-1,797.66	-331.1	1,107.3	-76.6	12.00	12.00	0.00
6,700.0	61.66	358.57	6,438.9	-1,853.96	-248.7	1,105.2	3.3	12.00	12.00	0.00
6,800.0	73.66	358.57	6,476.8	-1,891.89	-156.4	1,102.9	92.8	12.00	12.00	0.00
START OF TANGENT										
6,811.1	75.00	358.57	6,479.8	-1,894.90	-145.7	1,102.7	103.2	12.00	12.00	0.00
6,900.0	75.00	358.57	6,502.8	-1,917.90	-59.9	1,100.5	186.3	0.00	0.00	0.00
END OF TANGENT										
6,911.1	75.00	358.57	6,505.7	-1,920.78	-49.2	1,100.3	196.8	0.00	0.00	0.00
7,000.0	85.66	358.57	6,520.6	-1,935.68	38.3	1,098.1	281.5	12.00	12.00	0.00
ENTRY PNT: 531ft FSL & 2478ft FWL Sec 24										
7,036.1	90.00	358.57	6,521.9	-1,937.05	74.4	1,097.2	316.5	12.00	12.00	0.00
7,100.0	90.00	358.57	6,521.9	-1,937.05	138.2	1,095.6	378.4	0.00	0.00	0.00
7,200.0	90.00	358.57	6,521.9	-1,937.05	238.2	1,093.1	475.3	0.00	0.00	0.00
7,300.0	90.00	358.57	6,521.9	-1,937.05	338.2	1,090.6	572.2	0.00	0.00	0.00
7,400.0	90.00	358.57	6,521.9	-1,937.05	438.1	1,088.1	669.2	0.00	0.00	0.00
7,500.0	90.00	358.57	6,521.9	-1,937.05	538.1	1,085.6	766.1	0.00	0.00	0.00
7,600.0	90.00	358.57	6,521.9	-1,937.05	638.1	1,083.1	863.0	0.00	0.00	0.00
7,700.0	90.00	358.57	6,521.9	-1,937.05	738.0	1,080.6	959.9	0.00	0.00	0.00
7,800.0	90.00	358.57	6,521.9	-1,937.05	838.0	1,078.1	1,056.8	0.00	0.00	0.00
7,900.0	90.00	358.57	6,521.9	-1,937.04	938.0	1,075.6	1,153.7	0.00	0.00	0.00
8,000.0	90.00	358.57	6,521.9	-1,937.04	1,037.9	1,073.1	1,250.6	0.00	0.00	0.00
8,100.0	90.00	358.57	6,521.9	-1,937.04	1,137.9	1,070.6	1,347.5	0.00	0.00	0.00
8,200.0	90.00	358.57	6,521.9	-1,937.04	1,237.9	1,068.1	1,444.4	0.00	0.00	0.00
8,300.0	90.00	358.57	6,521.9	-1,937.04	1,337.9	1,065.7	1,541.3	0.00	0.00	0.00
8,400.0	90.00	358.57	6,521.9	-1,937.04	1,437.8	1,063.2	1,638.3	0.00	0.00	0.00
8,500.0	90.00	358.57	6,521.9	-1,937.04	1,537.8	1,060.7	1,735.2	0.00	0.00	0.00
8,600.0	90.00	358.57	6,521.9	-1,937.04	1,637.8	1,058.2	1,832.1	0.00	0.00	0.00
8,700.0	90.00	358.57	6,521.9	-1,937.04	1,737.7	1,055.7	1,929.0	0.00	0.00	0.00
8,800.0	90.00	358.57	6,521.9	-1,937.04	1,837.7	1,053.2	2,025.9	0.00	0.00	0.00
8,900.0	90.00	358.57	6,521.9	-1,937.04	1,937.7	1,050.7	2,122.8	0.00	0.00	0.00

Planning Report



Database:	EDM 5000.1 Single User Db	Local Co-ordinate Reference:	Well NORTH PLATTE O-K-24HC
Company:	BONANZA CREEK ENERGY INC.	TVD Reference:	KB-EST @ 4584.9usft (Original Well Elev)
Project:	WELD COUNTY, COLORADO	MD Reference:	KB-EST @ 4584.9usft (Original Well Elev)
Site:	SE SW SEC. 24 T5N R63W 6th P.M.	North Reference:	True
Well:	NORTH PLATTE O-K-24HC	Survey Calculation Method:	Minimum Curvature
Wellbore:	ORIGINAL WELLBORE		
Design:	PROPOSAL #1		

Planned Survey

MD (usft)	Inc (°)	Azi (°)	TVD (usft)	SS (usft)	+N/-S (usft)	+E/-W (usft)	Vertical Section (usft)	Dogleg Rate (°/100usft)	Build Rate (°/100usft)	Turn Rate (°/100usft)
9,000.0	90.00	358.57	6,521.9	-1,937.04	2,037.6	1,048.2	2,219.7	0.00	0.00	0.00
9,100.0	90.00	358.57	6,521.9	-1,937.04	2,137.6	1,045.7	2,316.6	0.00	0.00	0.00
9,200.0	90.00	358.57	6,521.9	-1,937.03	2,237.6	1,043.2	2,413.6	0.00	0.00	0.00
9,300.0	90.00	358.57	6,521.9	-1,937.03	2,337.5	1,040.7	2,510.5	0.00	0.00	0.00
9,400.0	90.00	358.57	6,521.9	-1,937.03	2,437.5	1,038.3	2,607.4	0.00	0.00	0.00
9,500.0	90.00	358.57	6,521.9	-1,937.03	2,537.5	1,035.8	2,704.3	0.00	0.00	0.00
9,600.0	90.00	358.57	6,521.9	-1,937.03	2,637.5	1,033.3	2,801.2	0.00	0.00	0.00
9,700.0	90.00	358.57	6,521.9	-1,937.03	2,737.4	1,030.8	2,898.1	0.00	0.00	0.00
9,800.0	90.00	358.57	6,521.9	-1,937.03	2,837.4	1,028.3	2,995.0	0.00	0.00	0.00
9,900.0	90.00	358.57	6,521.9	-1,937.03	2,937.4	1,025.8	3,091.9	0.00	0.00	0.00
10,000.0	90.00	358.57	6,521.9	-1,937.02	3,037.3	1,023.3	3,188.8	0.00	0.00	0.00
10,100.0	90.00	358.57	6,521.9	-1,937.02	3,137.3	1,020.8	3,285.8	0.00	0.00	0.00
10,200.0	90.00	358.57	6,521.9	-1,937.02	3,237.3	1,018.4	3,382.7	0.00	0.00	0.00
10,300.0	90.00	358.57	6,521.9	-1,937.02	3,337.2	1,015.9	3,479.6	0.00	0.00	0.00
10,400.0	90.00	358.58	6,521.9	-1,937.02	3,437.2	1,013.4	3,576.5	0.00	0.00	0.00
10,500.0	90.00	358.58	6,521.9	-1,937.02	3,537.2	1,010.9	3,673.4	0.00	0.00	0.00
10,600.0	90.00	358.58	6,521.9	-1,937.01	3,637.1	1,008.4	3,770.3	0.00	0.00	0.00
10,700.0	90.00	358.58	6,521.9	-1,937.01	3,737.1	1,005.9	3,867.2	0.00	0.00	0.00
10,800.0	90.00	358.58	6,521.9	-1,937.01	3,837.1	1,003.4	3,964.1	0.00	0.00	0.00
10,900.0	90.00	358.58	6,521.9	-1,937.01	3,937.1	1,000.9	4,061.1	0.00	0.00	0.00
11,000.0	90.00	358.58	6,521.9	-1,937.01	4,037.0	998.5	4,158.0	0.00	0.00	0.00
11,100.0	90.00	358.58	6,521.9	-1,937.00	4,137.0	996.0	4,254.9	0.00	0.00	0.00
11,200.0	90.00	358.58	6,521.9	-1,937.00	4,237.0	993.5	4,351.8	0.00	0.00	0.00
11,300.0	90.00	358.58	6,521.9	-1,937.00	4,336.9	991.0	4,448.7	0.00	0.00	0.00
BHL: 470ft FNL & 2542ft FWL Sec 24										
11,306.8	90.00	358.58	6,521.9	-1,937.00	4,343.7	990.8	4,455.3	0.00	0.00	0.00

Plan Annotations

MD (usft)	TVD (usft)	Local Coordinates		Comment
		+N/-S (usft)	+E/-W (usft)	
0.0	0.0	0.0	0.0	W/C: 461ft FSL & 1379ft FWL Sec 24
1,100.0	1,100.0	0.0	0.0	START NUDGE (2°/100ft BUR)
1,938.4	1,926.5	-49.9	111.1	EOB TO 16.77° INC
5,317.7	5,162.1	-449.6	1,000.4	END OF TANGENT
6,156.1	5,988.6	-499.5	1,111.5	EOD TO VERTICAL
6,186.1	6,018.6	-499.5	1,111.5	KOP (12°/100ft BUR)
6,811.1	6,479.8	-145.7	1,102.7	START OF TANGENT
6,911.1	6,505.7	-49.2	1,100.3	END OF TANGENT
7,036.1	6,521.9	74.4	1,097.2	ENTRY PNT: 531ft FSL & 2478ft FWL Sec 24
11,306.8	6,521.9	4,343.7	990.8	BHL: 470ft FNL & 2542ft FWL Sec 24