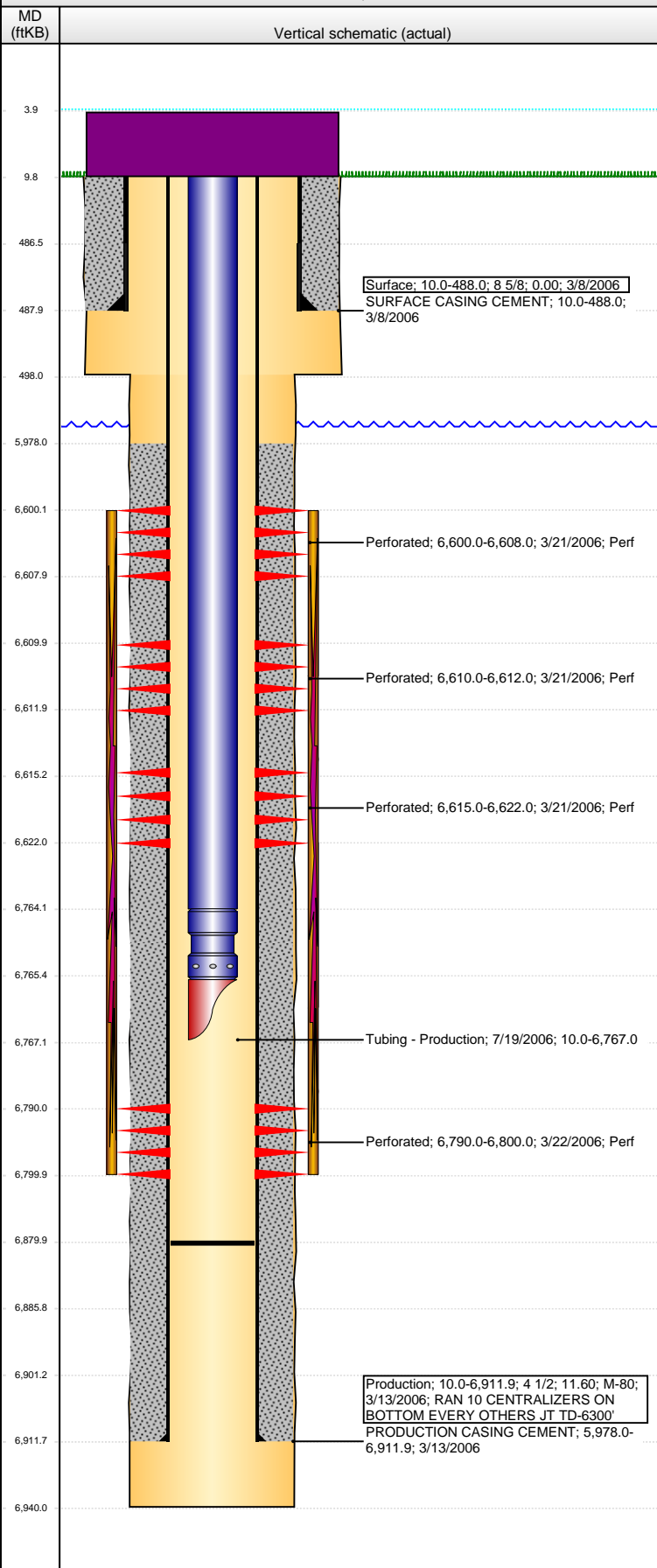


Well Name: BASHOR 17-42

VERTICAL - ORIGINAL HOLE, 4/1/2014 9:11:17 AM



Well Header

API	Business Unit	District	Well Config
05-123-23437	WATTENBERG	15	VERTICAL
Original KB Elevation (ft)	KB - GL / MSL (ftKB)	Spud Date	P & A Date
4,684.00	10.00	3/7/2006	
Comment			
VERY LITTLE INFO AVAIL. DISCREPANCY IN TD: DAILY DRLG RPTS 6940'/ ST RPT 6930'			
Directions To Well			

Congressional Location

Quarter 1	Quarter 2	Quarter 3	Quarter 4	Section	Township	Twnshp N...	Range	Rng E/W Dir
		NW	SE	17	6	N	63	W

Bottom Hole Location

North-South Distance (ft)	From N or S Line	East-West Distance (ft)	From E or W Line

Plug Back Total Depths

Date	Depth (ftKB)	Method	Com
3/13/2006	6,896.0	CASING TALLY	LANDING JOINTW/SHOE
3/21/2006	6,880.0	CASED HOLE LOG	DEPTH LOGGER ON CBL
7/19/2006	6,880.0	TAG	C/O TO 6880'

Wellbore Sections

Section Des	Size (in)	Act Top, MD (ftKB)	Act Btm, MD (ftKB)
SURFACE	12 1/4	10.0	498.0
PRODUCTION	7 7/8	498.0	6,940.0

Zone Statuses

Zone Name	Status Date	Status	Job
NIOBRARA	4/10/2006	PR	DRILLING/COMPLETION - ORIGINAL, 3/7/2006 00:00
CODELL	4/10/2006	PR	DRILLING/COMPLETION - ORIGINAL, 3/7/2006 00:00

Casing Strings

Casing Description	Run Date	OD (in)	Wt/Len (l...)	Grade	Top, MD (ft...)	MD (ftKB)
Surface	3/8/2006	8 5/8			10.0	488.0
Casing Description	Run Date	OD (in)	Wt/Len (l...)	Grade	Top, MD (ft...)	MD (ftKB)
Production	3/13/2006	4 1/2	11.60	M-80	10.0	6,911.9

Cement

Description	Top Depth (ftKB)	Bottom Depth (ftKB)
SURFACE CASING CEMENT	10.0	488.0
Description	Top Depth (ftKB)	Bottom Depth (ftKB)
PRODUCTION CASING CEMENT	5,978.0	6,911.9

Tubing Components

Item Des	OD (in)	Wt (lb/ft)	Grade	Jts	Len (ft)	Btm (ftKB)	Btm (TVD) (ftKB)
Tubing	2 3/8			222	6,754.00	6,764.0	
Seating Nipple	2 3/8				1.50	6,765.5	
Mule Shoe	2 3/8				1.50	6,767.0	

Perforation Data

Zone	Bnch/St g	Entered Shot Total	Top (ftKB)	Btm (ftKB)	Date
NIOBRARA, ORIGINAL HOLE	B	16	6,600.00	6,608.00	3/21/2006
NIOBRARA, ORIGINAL HOLE	B	6	6,610.00	6,612.00	3/21/2006
NIOBRARA, ORIGINAL HOLE	B	12	6,615.00	6,622.00	3/21/2006
CODELL, ORIGINAL HOLE		40	6,790.00	6,800.00	3/22/2006

Stimulations & Treatments

Date	Zone	Primary Job Type
3/22/2006	NIOBRARA, ORIGINAL HOLE	DRILLING/COMPLETION - ORIGINAL
Technical Result		Tech Result Note
Comment		
Date	Zone	Primary Job Type
3/23/2006	NIOBRARA-CODELL, ORIGINAL HOLE	DRILLING/COMPLETION - ORIGINAL
Technical Result		Tech Result Note
Comment		

LIMITED ENTRY

Other In Hole

Run Date	Des	OD (in)	Top (ftKB)	Btm (ftKB)

Well Name: BASHOR 17-42

VERTICAL - ORIGINAL HOLE, 4/1/2014 9:11:20 AM

Logs

Date	Type	Top, MD (ftKB)	Btm, MD (ftKB)
3/12/2006	COMPENSATED DENSITY	3,000.0	6,913.0
3/12/2006	INDUCTION	10.0	6,933.0
3/21/2006	CBL/CCL/GR	5,800.0	6,880.0

