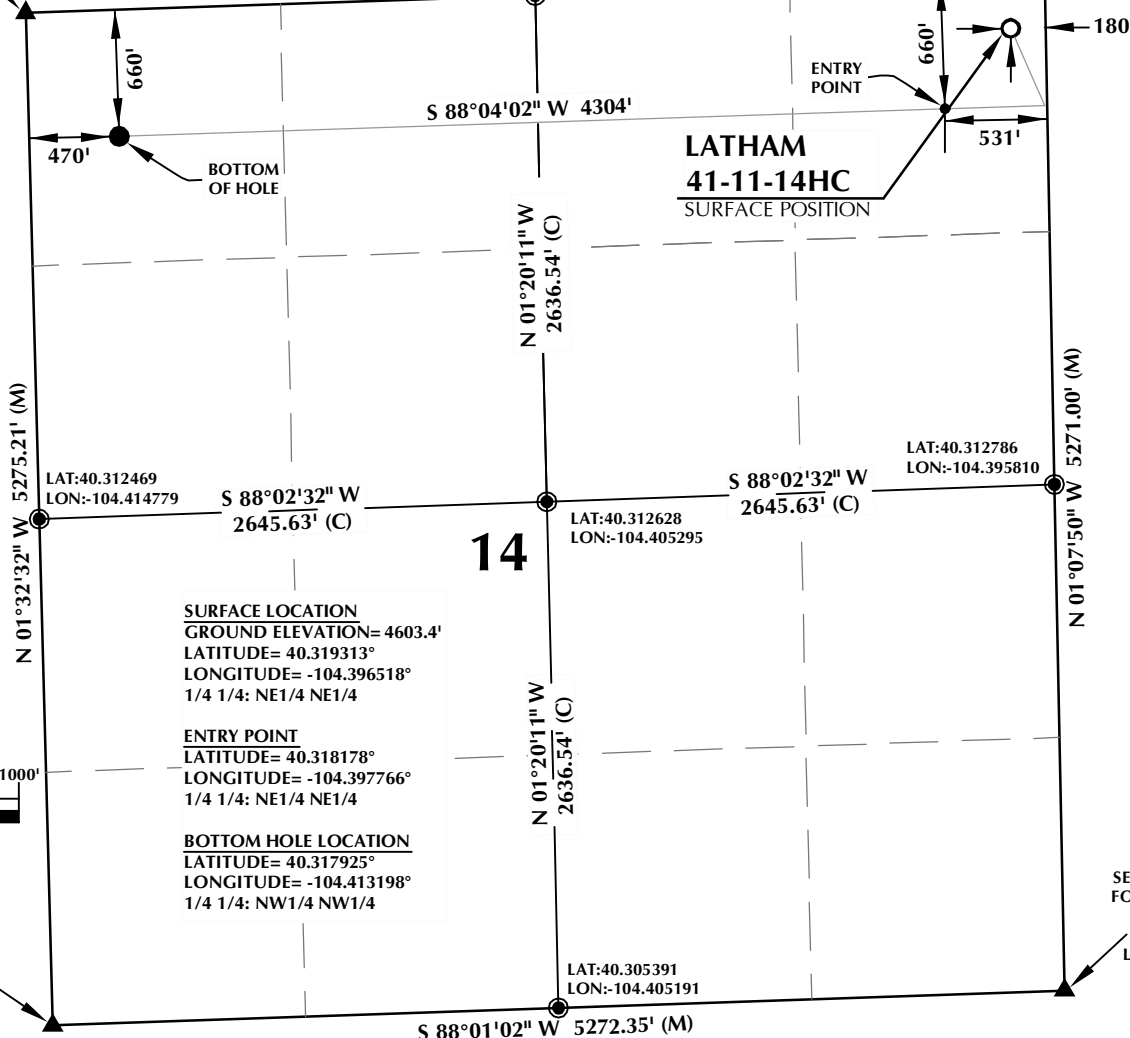


N.W. COR.
SEC. 14, T4N, R63W
FOUND ALUM. CAP
L.S. NO. 34995
LAT:40.319709
LON:-104.414918

T4N, R63W

LAT:40.319865
LON:-104.405399
S 88°04'02" W 5310.17' (M)

NE. COR.
SEC. 14, T4N, R63W
FOUND ALUM. CAP
L.S. NO. 4845
LAT:40.320021
LON:-104.395879



CERTIFICATE OF SURVEYOR:

THIS IS TO CERTIFY THAT THE ABOVE PLAT WAS PREPARED FROM FIELD NOTES OF ACTUAL SURVEY MADE BY ME OR UNDER MY SUPERVISION AND THAT THE SAME ARE TRUE AND CORRECT TO THE BEST OF MY KNOWLEDGE AND BELIEF. THIS CERTIFICATE DOES NOT REPRESENT A LAND SURVEY PLAT OR IMPROVEMENT SURVEY PLAT AS DEFINED BY C.S. 38-513-02 AND CANNOT BE RELIED UPON TO DETERMINE OWNERSHIP.

Benjamin J. Reenders
BENJAMIN J. REENDERS
PROFESSIONAL LAND SURVEYOR
COLORADO REGISTRATION NUMBER 48362 3/19/14

NOTICE:
ACCORDING TO COLORADO STATE LAW YOU MUST COMMENCE ANY LEGAL ACTION BASED UPON ANY DEFECT IN THIS SURVEY WITHIN THREE YEARS AFTER YOU FIRST DISCOVER SUCH DEFECT. IN NO EVENT MAY ANY ACTION BASED UPON ANY DEFECT IN THIS SURVEY BE COMMENCED MORE THAN TEN YEARS FROM THE DATE ON THE CERTIFICATION SHOWN HEREON.

NEAREST CULTURAL ITEMS:

BUILDING: ±5102' E
BUILDING UNIT: ±5102' E
HIGH OCCUPANCY BUILDING UNIT: 5280'+
DESIGNATED OUTSIDE ACTIVITY AREA: 5280'+
PUBLIC ROAD: ±906' SW
ABOVE GROUND UTILITY: ±1001' SW
RAILROAD: ±3440' NE (ABANDONED)
PROPERTY LINE: ±180' E

NOTES:

- ▲ INDICATES FOUND SECTION CORNER
- INDICATES CALCULATED CORNER
- DRAWING LATITUDE AND LONGITUDE COORDINATES ARE NAD 83 (CORS 96)(EPOCH:2002)
- ELEVATION BASED ON NAVD88 (GEOID09)
- BASIS OF BEARING DERIVED FROM COLORADO COORDINATE SYSTEM 1983 NORTH ZONE UNLESS OTHERWISE NOTED.
- ALL MEASURED DISTANCES ARE GRID.
- COMBINED SCALE FACTOR: .99973617
- OPERATOR: ROB WILSON / PDOP = 1.5
- SURFACE USE OF LOCATION IS RANGELAND.
- SEE ADDENDUM TO WELL LOCATION CERTIFICATE FOR EXISTING IMPROVEMENTS WITHIN 500' OF THE WELL PAD.
- WELL FOOTAGES ARE MEASURED AT RIGHT ANGLES TO THE SECTION LINES.
- THE BOTTOM OF HOLE BEARS S88°04'02"W 4304' FROM THE ENTRY POINT.

WELL PAD - LATHAM U-14

LATHAM 41-11-14HC
WELL LOCATION CERTIFICATE
254' FNL & 180' FEL NENE (SURFACE)
660' FNL & 531' FEL NENE (ENTRY POINT)
660' FNL & 470' FNL NWNW (BOTTOM)
LOCATED IN SECTION 14
T4N, R63W, 6TH P.M.
WELD COUNTY, COLORADO

 **BONANZA CREEK**
410 17th Street, Suite 1400
Denver, Colorado 80202



CONSULTING, LLC

SHERIDAN OFFICE
2155 North Main Street
Sheridan, Wyoming 82801
Phone 307-674-0609

LOVELAND OFFICE
1635 Foxtrail Drive, Suite 204
Loveland, Colorado 80538
Phone 970-776-4331

DRAFTED BY:	LMO	CHECKED BY:	BJR
DATE DRAFTED:	12/20/13	DATE SURVEYED:	11/15/13
REVISED:	3/19/14	FILE NAME:	13-94