

BONANZA CREEK OIL COMPANY

Location: COLORADO Slot: SLOT#02 LATHAM U-A-14HNB (214°FNL & 179°FEL, SEC.14)
Field: WELD COUNTY Well: LATHAM U-A-14HNB
Facility: SEC.14-T4N-R63W Wellbore: LATHAM U-A-14HNB PWB

Plot reference wellpath is LATHAM U-A-14HNB (REV-B.0) PWP

True vertical depths are referenced to RIG (RKB)	Grid System: NAD83 / Lambert Colorado SP, Northern Zone (501), US feet
Measured depths are referenced to RIG (RKB)	North Reference: True north
RIG (RKB) to Mean Sea Level: 4621 feet	Scale: True distance
Mean Sea Level to Mud line (At Slot: SLOT#02 LATHAM U-A-14HNB (214°FNL & 179°FEL, SEC.14)): 0 feet	Depths are in feet
Coordinates are in feet referenced to Slot	Created by: guenaler on 3/25/2014

Location Information

Facility Name	Grid East (US ft)	Grid North (US ft)	Latitude	Longitude
SEC.14-T4N-R63W	3307689.092	1361141.238	40°19'10.121"N	104°23'47.454"W
Slot	Local N (ft)	Local E (ft)	Grid East (US ft)	Grid North (US ft)
SLOT#02 LATHAM U-A-14HNB (214°FNL & 179°FEL, SEC.14)	-20.04	-0.31	3307689.031	1361121.200
RIG (RKB) to Mud line (At Slot: SLOT#02 LATHAM U-A-14HNB (214°FNL & 179°FEL, SEC.14))				4621ft
Mean Sea Level to Mud line (At Slot: SLOT#02 LATHAM U-A-14HNB (214°FNL & 179°FEL, SEC.14))				0ft
RIG (RKB) to Mean Sea Level				4621ft

Well Profile Data

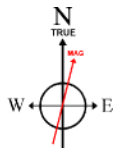
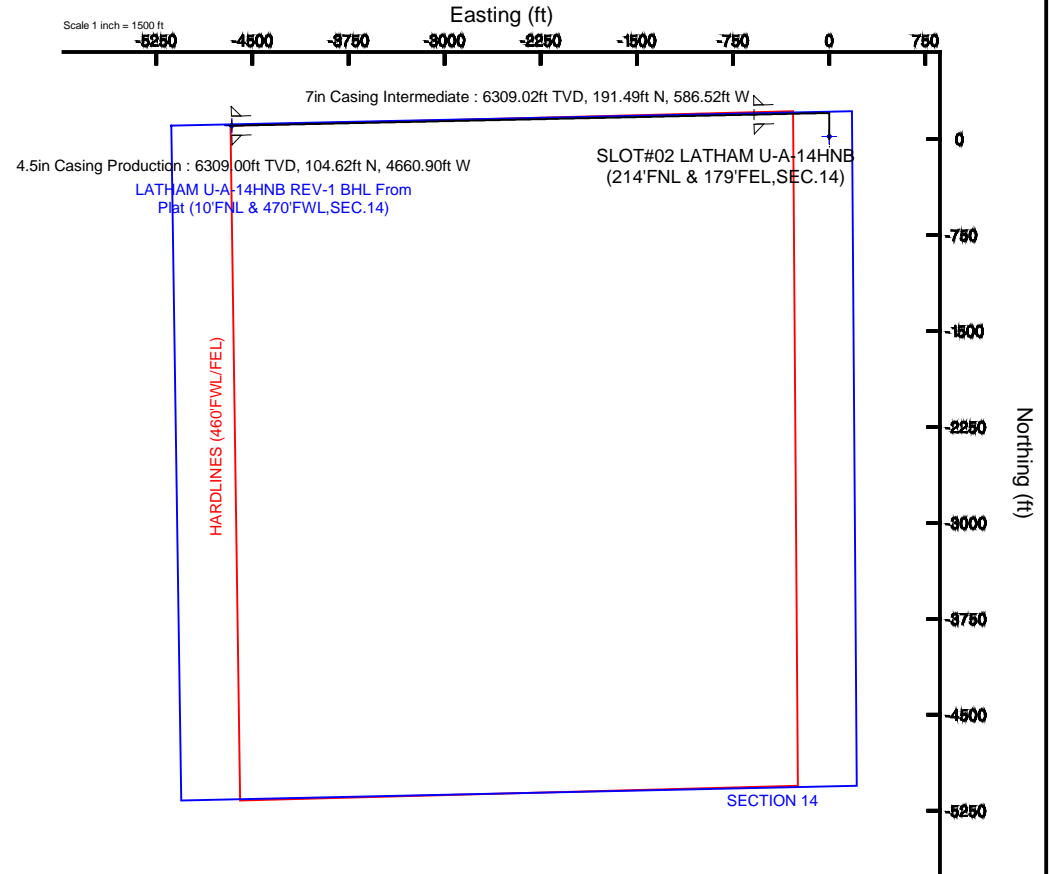
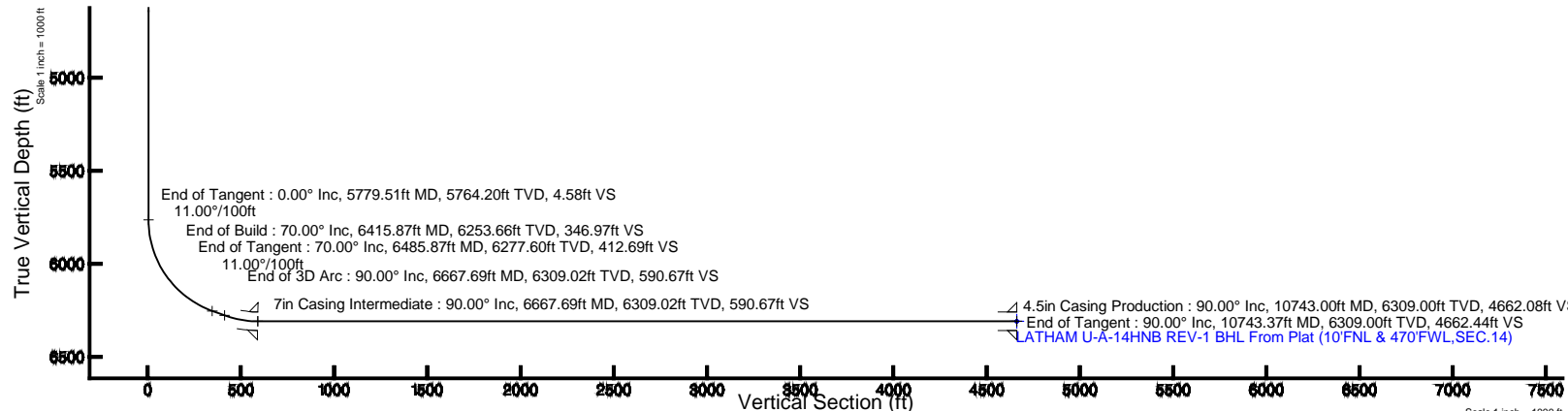
Design Comment	MD (ft)	Inc (°)	Az (°)	TVD (ft)	Local N (ft)	Local E (ft)	DLS (°/100ft)	VS (ft)
Tie On	17.00	0.000	0.000	17.00	0.00	0.00	0.00	0.00
End of Tangent	1500.00	0.000	0.000	1500.00	0.00	0.00	0.00	0.00
End of Build	2000.00	10.000	0.000	1997.47	43.52	0.00	2.00	0.98
End of Tangent	2673.52	10.000	0.000	2660.75	160.48	0.00	0.00	3.60
End of Drop	3173.52	0.000	268.778	3158.21	204.00	0.00	2.00	4.58
End of Tangent	5779.51	0.000	268.778	5764.20	204.00	0.00	0.00	4.58
End of Build	6415.87	70.000	268.778	6253.66	196.69	-342.64	11.00	346.97
End of Tangent	6485.87	70.000	268.778	6277.60	195.29	-408.41	0.00	412.69
End of 3D Arc	6667.69	90.000	268.779	6309.02	191.49	-586.52	11.00	590.67
End of Tangent	10743.37	90.000	268.779	6309.00	104.61	-4661.27	0.00	4662.44

Survey Program

Start MD (ft)	End MD (ft)	Tool	Model	Log Name/Comment	Wellbore
17.00	10743.37	NavTrak	NavTrak (Standard)		LATHAM U-A-14HNB PWB



BAKER HUGHES



BGGM (1945.0 to 2015.0) Dip: 66.04° Field: 52753.9 nT
Magnetic North is 8.33 degrees East of True North (at 3/25/2014)

To correct azimuth from Magnetic to True add 8.33 degrees



Planned Wellpath Report

LATHAM U-A-14HNB (REV-B.0) PWP

Page 1 of 7



REFERENCE WELLPATH IDENTIFICATION

Operator	BONANZA CREEK OIL COMPANY	Slot	SLOT#02 LATHAM U-A-14HNB (214'FNL & 179'FEL,SEC.14)
Area	COLORADO	Well	LATHAM U-A-14HNB
Field	WELD COUNTY	Wellbore	LATHAM U-A-14HNB PWB
Facility	SEC.14-T4N-R63W		

REPORT SETUP INFORMATION

Projection System	NAD83 / Lambert Colorado SP, Northern Zone (501), US feet	Software System	WellArchitect® 4.0.0
North Reference	True	User	Guenaler
Scale	0.999958	Report Generated	3/25/2014 at 4:59:49 PM
Convergence at slot	n/a	Database/Source file	WA_Denver/LATHAM_U-A-14HNB_PWB.xml

WELLPATH LOCATION

	Local coordinates		Grid coordinates		Geographic coordinates	
	North[ft]	East[ft]	Easting[US ft]	Northing[US ft]	Latitude	Longitude
Slot Location	-20.04	-0.31	3307689.03	1361121.20	40°19'09.923"N	104°23'47.458"W
Facility Reference Pt			3307689.09	1361141.24	40°19'10.121"N	104°23'47.454"W
Field Reference Pt			3327718.19	1377782.99	40°21'52.020"N	104°19'26.040"W

WELLPATH DATUM

Calculation method	Minimum curvature	RIG (RKB) to Facility Vertical Datum	4621.00ft
Horizontal Reference Pt	Slot	RIG (RKB) to Mean Sea Level	4621.00ft
Vertical Reference Pt	RIG (RKB)	RIG (RKB) to Mud Line at Slot (SLOT#02 LATHAM U-A-14HNB (214'FNL & 179'FEL,SEC.14))	4621.00ft
MD Reference Pt	RIG (RKB)	Section Origin	N 0.00, E 0.00 ft
Field Vertical Reference	Mean Sea Level	Section Azimuth	271.29°



Planned Wellpath Report

LATHAM U-A-14HNB (REV-B.0) PWP

Page 2 of 7



REFERENCE WELLPATH IDENTIFICATION

Operator	BONANZA CREEK OIL COMPANY	Slot	SLOT#02 LATHAM U-A-14HNB (214'FNL & 179'FEL,SEC.14)
Area	COLORADO	Well	LATHAM U-A-14HNB
Field	WELD COUNTY	Wellbore	LATHAM U-A-14HNB PWB
Facility	SEC.14-T4N-R63W		

WELLPATH DATA (118 stations) † = interpolated/extrapolated station

MD [ft]	Inclination [°]	Azimuth [°]	TVD [ft]	Vert Sect [ft]	North [ft]	East [ft]	Latitude	Longitude	DLS [°/100ft]	Comments
0.00†	0.000	0.000	0.00	0.00	0.00	0.00	40°19'09.923"N	104°23'47.458"W	0.00	
17.00	0.000	0.000	17.00	0.00	0.00	0.00	40°19'09.923"N	104°23'47.458"W	0.00	Tie On
117.00†	0.000	0.000	117.00	0.00	0.00	0.00	40°19'09.923"N	104°23'47.458"W	0.00	
217.00†	0.000	0.000	217.00	0.00	0.00	0.00	40°19'09.923"N	104°23'47.458"W	0.00	
317.00†	0.000	0.000	317.00	0.00	0.00	0.00	40°19'09.923"N	104°23'47.458"W	0.00	
417.00†	0.000	0.000	417.00	0.00	0.00	0.00	40°19'09.923"N	104°23'47.458"W	0.00	
517.00†	0.000	0.000	517.00	0.00	0.00	0.00	40°19'09.923"N	104°23'47.458"W	0.00	
617.00†	0.000	0.000	617.00	0.00	0.00	0.00	40°19'09.923"N	104°23'47.458"W	0.00	
717.00†	0.000	0.000	717.00	0.00	0.00	0.00	40°19'09.923"N	104°23'47.458"W	0.00	
817.00†	0.000	0.000	817.00	0.00	0.00	0.00	40°19'09.923"N	104°23'47.458"W	0.00	
917.00†	0.000	0.000	917.00	0.00	0.00	0.00	40°19'09.923"N	104°23'47.458"W	0.00	
1017.00†	0.000	0.000	1017.00	0.00	0.00	0.00	40°19'09.923"N	104°23'47.458"W	0.00	
1117.00†	0.000	0.000	1117.00	0.00	0.00	0.00	40°19'09.923"N	104°23'47.458"W	0.00	
1217.00†	0.000	0.000	1217.00	0.00	0.00	0.00	40°19'09.923"N	104°23'47.458"W	0.00	
1317.00†	0.000	0.000	1317.00	0.00	0.00	0.00	40°19'09.923"N	104°23'47.458"W	0.00	
1417.00†	0.000	0.000	1417.00	0.00	0.00	0.00	40°19'09.923"N	104°23'47.458"W	0.00	
1500.00	0.000	0.000	1500.00	0.00	0.00	0.00	40°19'09.923"N	104°23'47.458"W	0.00	End of Tangent
1517.00†	0.340	0.000	1517.00	0.00	0.05	0.00	40°19'09.923"N	104°23'47.458"W	2.00	
1617.00†	2.340	0.000	1616.97	0.05	2.39	0.00	40°19'09.947"N	104°23'47.458"W	2.00	
1717.00†	4.340	0.000	1716.79	0.18	8.21	0.00	40°19'10.004"N	104°23'47.458"W	2.00	
1817.00†	6.340	0.000	1816.35	0.39	17.52	0.00	40°19'10.096"N	104°23'47.458"W	2.00	
1917.00†	8.340	0.000	1915.53	0.68	30.30	0.00	40°19'10.222"N	104°23'47.458"W	2.00	
2000.00	10.000	0.000	1997.47	0.98	43.52	0.00	40°19'10.353"N	104°23'47.458"W	2.00	End of Build
2017.00†	10.000	0.000	2014.21	1.04	46.47	0.00	40°19'10.382"N	104°23'47.458"W	0.00	
2117.00†	10.000	0.000	2112.69	1.43	63.84	0.00	40°19'10.554"N	104°23'47.458"W	0.00	
2217.00†	10.000	0.000	2211.17	1.82	81.20	0.00	40°19'10.725"N	104°23'47.458"W	0.00	
2317.00†	10.000	0.000	2309.65	2.21	98.57	0.00	40°19'10.897"N	104°23'47.458"W	0.00	
2417.00†	10.000	0.000	2408.13	2.60	115.93	0.00	40°19'11.069"N	104°23'47.458"W	0.00	
2517.00†	10.000	0.000	2506.61	2.99	133.30	0.00	40°19'11.240"N	104°23'47.458"W	0.00	
2617.00†	10.000	0.000	2605.09	3.38	150.66	0.00	40°19'11.412"N	104°23'47.458"W	0.00	



Planned Wellpath Report

LATHAM U-A-14HNB (REV-B.0) PWP

Page 3 of 7



REFERENCE WELLPATH IDENTIFICATION

Operator	BONANZA CREEK OIL COMPANY	Slot	SLOT#02 LATHAM U-A-14HNB (214'FNL & 179'FEL,SEC.14)
Area	COLORADO	Well	LATHAM U-A-14HNB
Field	WELD COUNTY	Wellbore	LATHAM U-A-14HNB PWB
Facility	SEC.14-T4N-R63W		

WELLPATH DATA (118 stations) † = interpolated/extrapolated station

MD [ft]	Inclination [°]	Azimuth [°]	TVD [ft]	Vert Sect [ft]	North [ft]	East [ft]	Latitude	Longitude	DLS [°/100ft]	Comments
2673.52	10.000	0.000	2660.75	3.60	160.48	0.00	40°19'11.509"N	104°23'47.458"W	0.00	End of Tangent
2717.00†	9.130	0.000	2703.63	3.76	167.70	0.00	40°19'11.580"N	104°23'47.458"W	2.00	
2817.00†	7.130	0.000	2802.62	4.08	181.84	0.00	40°19'11.720"N	104°23'47.458"W	2.00	
2917.00†	5.130	0.000	2902.04	4.32	192.52	0.00	40°19'11.825"N	104°23'47.458"W	2.00	
3017.00†	3.130	0.000	3001.78	4.48	199.73	0.00	40°19'11.897"N	104°23'47.458"W	2.00	
3117.00†	1.130	0.000	3101.70	4.56	203.44	0.00	40°19'11.933"N	104°23'47.458"W	2.00	
3173.52	0.000	268.778	3158.21	4.58	204.00	0.00	40°19'11.939"N	104°23'47.458"W	2.00	End of Drop
3217.00†	0.000	268.778	3201.70	4.58	204.00	0.00	40°19'11.939"N	104°23'47.458"W	0.00	
3317.00†	0.000	268.778	3301.70	4.58	204.00	0.00	40°19'11.939"N	104°23'47.458"W	0.00	
3417.00†	0.000	268.778	3401.70	4.58	204.00	0.00	40°19'11.939"N	104°23'47.458"W	0.00	
3517.00†	0.000	268.778	3501.70	4.58	204.00	0.00	40°19'11.939"N	104°23'47.458"W	0.00	
3617.00†	0.000	268.778	3601.70	4.58	204.00	0.00	40°19'11.939"N	104°23'47.458"W	0.00	
3717.00†	0.000	268.778	3701.70	4.58	204.00	0.00	40°19'11.939"N	104°23'47.458"W	0.00	
3817.00†	0.000	268.778	3801.70	4.58	204.00	0.00	40°19'11.939"N	104°23'47.458"W	0.00	
3917.00†	0.000	268.778	3901.70	4.58	204.00	0.00	40°19'11.939"N	104°23'47.458"W	0.00	
4017.00†	0.000	268.778	4001.70	4.58	204.00	0.00	40°19'11.939"N	104°23'47.458"W	0.00	
4117.00†	0.000	268.778	4101.70	4.58	204.00	0.00	40°19'11.939"N	104°23'47.458"W	0.00	
4217.00†	0.000	268.778	4201.70	4.58	204.00	0.00	40°19'11.939"N	104°23'47.458"W	0.00	
4317.00†	0.000	268.778	4301.70	4.58	204.00	0.00	40°19'11.939"N	104°23'47.458"W	0.00	
4417.00†	0.000	268.778	4401.70	4.58	204.00	0.00	40°19'11.939"N	104°23'47.458"W	0.00	
4517.00†	0.000	268.778	4501.70	4.58	204.00	0.00	40°19'11.939"N	104°23'47.458"W	0.00	
4617.00†	0.000	268.778	4601.70	4.58	204.00	0.00	40°19'11.939"N	104°23'47.458"W	0.00	
4717.00†	0.000	268.778	4701.70	4.58	204.00	0.00	40°19'11.939"N	104°23'47.458"W	0.00	
4817.00†	0.000	268.778	4801.70	4.58	204.00	0.00	40°19'11.939"N	104°23'47.458"W	0.00	
4917.00†	0.000	268.778	4901.70	4.58	204.00	0.00	40°19'11.939"N	104°23'47.458"W	0.00	
5017.00†	0.000	268.778	5001.70	4.58	204.00	0.00	40°19'11.939"N	104°23'47.458"W	0.00	
5117.00†	0.000	268.778	5101.70	4.58	204.00	0.00	40°19'11.939"N	104°23'47.458"W	0.00	
5217.00†	0.000	268.778	5201.70	4.58	204.00	0.00	40°19'11.939"N	104°23'47.458"W	0.00	
5317.00†	0.000	268.778	5301.70	4.58	204.00	0.00	40°19'11.939"N	104°23'47.458"W	0.00	
5417.00†	0.000	268.778	5401.70	4.58	204.00	0.00	40°19'11.939"N	104°23'47.458"W	0.00	



Planned Wellpath Report

LATHAM U-A-14HNB (REV-B.0) PWP

Page 4 of 7



REFERENCE WELLPATH IDENTIFICATION

Operator	BONANZA CREEK OIL COMPANY	Slot	SLOT#02 LATHAM U-A-14HNB (214'FNL & 179'FEL,SEC.14)
Area	COLORADO	Well	LATHAM U-A-14HNB
Field	WELD COUNTY	Wellbore	LATHAM U-A-14HNB PWB
Facility	SEC.14-T4N-R63W		

WELLPATH DATA (118 stations) † = interpolated/extrapolated station

MD [ft]	Inclination [°]	Azimuth [°]	TVD [ft]	Vert Sect [ft]	North [ft]	East [ft]	Latitude	Longitude	DLS [°/100ft]	Comments
5517.00†	0.000	268.778	5501.70	4.58	204.00	0.00	40°19'11.939"N	104°23'47.458"W	0.00	
5617.00†	0.000	268.778	5601.70	4.58	204.00	0.00	40°19'11.939"N	104°23'47.458"W	0.00	
5717.00†	0.000	268.778	5701.70	4.58	204.00	0.00	40°19'11.939"N	104°23'47.458"W	0.00	
5779.51	0.000	268.778	5764.20	4.58	204.00	0.00	40°19'11.939"N	104°23'47.458"W	0.00	End of Tangent
5817.00†	4.124	268.778	5801.67	5.92	203.97	-1.35	40°19'11.939"N	104°23'47.475"W	11.00	
5917.00†	15.124	268.778	5900.11	22.60	203.62	-18.04	40°19'11.935"N	104°23'47.691"W	11.00	
6017.00†	26.124	268.778	5993.55	57.74	202.87	-53.20	40°19'11.928"N	104°23'48.145"W	11.00	
6117.00†	37.124	268.778	6078.57	110.04	201.75	-105.54	40°19'11.917"N	104°23'48.821"W	11.00	
6217.00†	48.124	268.778	6152.04	177.59	200.31	-173.14	40°19'11.902"N	104°23'49.693"W	11.00	
6317.00†	59.124	268.778	6211.26	257.91	198.59	-253.51	40°19'11.885"N	104°23'50.731"W	11.00	
6415.87	70.000	268.778	6253.66	346.97	196.69	-342.64	40°19'11.867"N	104°23'51.882"W	11.00	End of Build
6417.00†	70.000	268.778	6254.05	348.03	196.67	-343.71	40°19'11.866"N	104°23'51.895"W	0.00	
6485.87	70.000	268.778	6277.60	412.69	195.29	-408.41	40°19'11.853"N	104°23'52.731"W	0.00	End of Tangent
6517.00†	73.424	268.778	6287.37	442.21	194.66	-437.95	40°19'11.847"N	104°23'53.112"W	11.00	
6617.00†	84.424	268.778	6306.55	540.11	192.57	-535.92	40°19'11.826"N	104°23'54.377"W	11.00	
6667.69	90.000	268.779	6309.02	590.67	191.49	-586.52	40°19'11.815"N	104°23'55.030"W	11.00	End of 3D Arc
6717.00†	90.000	268.779	6309.02	639.93	190.44	-635.82	40°19'11.805"N	104°23'55.666"W	0.00	
6817.00†	90.000	268.779	6309.02	739.83	188.31	-735.79	40°19'11.784"N	104°23'56.957"W	0.00	
6917.00†	90.000	268.779	6309.02	839.74	186.18	-835.77	40°19'11.763"N	104°23'58.248"W	0.00	
7017.00†	90.000	268.779	6309.02	939.64	184.04	-935.75	40°19'11.742"N	104°23'59.539"W	0.00	
7117.00†	90.000	268.779	6309.01	1039.55	181.91	-1035.73	40°19'11.720"N	104°24'00.829"W	0.00	
7217.00†	90.000	268.779	6309.01	1139.45	179.78	-1135.70	40°19'11.699"N	104°24'02.120"W	0.00	
7317.00†	90.000	268.779	6309.01	1239.36	177.65	-1235.68	40°19'11.678"N	104°24'03.411"W	0.00	
7417.00†	90.000	268.779	6309.01	1339.26	175.52	-1335.66	40°19'11.657"N	104°24'04.701"W	0.00	
7517.00†	90.000	268.779	6309.01	1439.16	173.39	-1435.63	40°19'11.636"N	104°24'05.992"W	0.00	
7617.00†	90.000	268.779	6309.01	1539.07	171.25	-1535.61	40°19'11.615"N	104°24'07.283"W	0.00	
7717.00†	90.000	268.779	6309.01	1638.97	169.12	-1635.59	40°19'11.594"N	104°24'08.574"W	0.00	
7817.00†	90.000	268.779	6309.01	1738.88	166.99	-1735.57	40°19'11.573"N	104°24'09.864"W	0.00	
7917.00†	90.000	268.779	6309.01	1838.78	164.86	-1835.54	40°19'11.551"N	104°24'11.155"W	0.00	
8017.00†	90.000	268.779	6309.01	1938.69	162.73	-1935.52	40°19'11.530"N	104°24'12.446"W	0.00	



Planned Wellpath Report

LATHAM U-A-14HNB (REV-B.0) PWP

Page 5 of 7



REFERENCE WELLPATH IDENTIFICATION

Operator	BONANZA CREEK OIL COMPANY	Slot	SLOT#02 LATHAM U-A-14HNB (214'FNL & 179'FEL,SEC.14)
Area	COLORADO	Well	LATHAM U-A-14HNB
Field	WELD COUNTY	Wellbore	LATHAM U-A-14HNB PWB
Facility	SEC.14-T4N-R63W		

WELLPATH DATA (118 stations) † = interpolated/extrapolated station

MD [ft]	Inclination [°]	Azimuth [°]	TVD [ft]	Vert Sect [ft]	North [ft]	East [ft]	Latitude	Longitude	DLS [°/100ft]	Comments
8117.00†	90.000	268.779	6309.01	2038.59	160.60	-2035.50	40°19'11.509"N	104°24'13.736"W	0.00	
8217.00†	90.000	268.779	6309.01	2138.49	158.46	-2135.48	40°19'11.488"N	104°24'15.027"W	0.00	
8317.00†	90.000	268.779	6309.01	2238.40	156.33	-2235.45	40°19'11.467"N	104°24'16.318"W	0.00	
8417.00†	90.000	268.779	6309.01	2338.30	154.20	-2335.43	40°19'11.446"N	104°24'17.609"W	0.00	
8517.00†	90.000	268.779	6309.01	2438.21	152.07	-2435.41	40°19'11.425"N	104°24'18.899"W	0.00	
8617.00†	90.000	268.779	6309.01	2538.11	149.94	-2535.38	40°19'11.403"N	104°24'20.190"W	0.00	
8717.00†	90.000	268.779	6309.01	2638.02	147.81	-2635.36	40°19'11.382"N	104°24'21.481"W	0.00	
8817.00†	90.000	268.779	6309.01	2737.92	145.67	-2735.34	40°19'11.361"N	104°24'22.771"W	0.00	
8917.00†	90.000	268.779	6309.01	2837.82	143.54	-2835.32	40°19'11.340"N	104°24'24.062"W	0.00	
9017.00†	90.000	268.779	6309.01	2937.73	141.41	-2935.29	40°19'11.319"N	104°24'25.353"W	0.00	
9117.00†	90.000	268.779	6309.01	3037.63	139.28	-3035.27	40°19'11.297"N	104°24'26.644"W	0.00	
9217.00†	90.000	268.779	6309.01	3137.54	137.15	-3135.25	40°19'11.276"N	104°24'27.934"W	0.00	
9317.00†	90.000	268.779	6309.01	3237.44	135.02	-3235.23	40°19'11.255"N	104°24'29.225"W	0.00	
9417.00†	90.000	268.779	6309.01	3337.35	132.88	-3335.20	40°19'11.234"N	104°24'30.516"W	0.00	
9517.00†	90.000	268.779	6309.01	3437.25	130.75	-3435.18	40°19'11.213"N	104°24'31.806"W	0.00	
9617.00†	90.000	268.779	6309.00	3537.15	128.62	-3535.16	40°19'11.192"N	104°24'33.097"W	0.00	
9717.00†	90.000	268.779	6309.00	3637.06	126.49	-3635.14	40°19'11.170"N	104°24'34.388"W	0.00	
9817.00†	90.000	268.779	6309.00	3736.96	124.36	-3735.11	40°19'11.149"N	104°24'35.679"W	0.00	
9917.00†	90.000	268.779	6309.00	3836.87	122.23	-3835.09	40°19'11.128"N	104°24'36.969"W	0.00	
10017.00†	90.000	268.779	6309.00	3936.77	120.09	-3935.07	40°19'11.107"N	104°24'38.260"W	0.00	
10117.00†	90.000	268.779	6309.00	4036.68	117.96	-4035.04	40°19'11.085"N	104°24'39.551"W	0.00	
10217.00†	90.000	268.779	6309.00	4136.58	115.83	-4135.02	40°19'11.064"N	104°24'40.841"W	0.00	
10317.00†	90.000	268.779	6309.00	4236.48	113.70	-4235.00	40°19'11.043"N	104°24'42.132"W	0.00	
10417.00†	90.000	268.779	6309.00	4336.39	111.57	-4334.98	40°19'11.022"N	104°24'43.423"W	0.00	
10517.00†	90.000	268.779	6309.00	4436.29	109.44	-4434.95	40°19'11.000"N	104°24'44.713"W	0.00	
10617.00†	90.000	268.779	6309.00	4536.20	107.30	-4534.93	40°19'10.979"N	104°24'46.004"W	0.00	
10717.00†	90.000	268.779	6309.00	4636.10	105.17	-4634.91	40°19'10.958"N	104°24'47.295"W	0.00	
10743.37	90.000	268.779	6309.00 ¹	4662.44	104.61	-4661.27	40°19'10.952"N	104°24'47.635"W	0.00	End of Tangent



Planned Wellpath Report

LATHAM U-A-14HNB (REV-B.0) PWP

Page 6 of 7



REFERENCE WELLPATH IDENTIFICATION			
Operator	BONANZA CREEK OIL COMPANY	Slot	SLOT#02 LATHAM U-A-14HNB (214'FNL & 179'FEL,SEC.14)
Area	COLORADO	Well	LATHAM U-A-14HNB
Field	WELD COUNTY	Wellbore	LATHAM U-A-14HNB PWB
Facility	SEC.14-T4N-R63W		

HOLE & CASING SECTIONS - Ref Wellbore: LATHAM U-A-14HNB PWB Ref Wellpath: LATHAM U-A-14HNB (REV-B.0) PWP									
String/Diameter	Start MD [ft]	End MD [ft]	Interval [ft]	Start TVD [ft]	End TVD [ft]	Start N/S [ft]	Start E/W [ft]	End N/S [ft]	End E/W [ft]
7in Casing Intermediate	17.00	6667.69	6650.69	17.00	6309.02	0.00	0.00	191.49	-586.52
4.5in Casing Production	17.00	10743.00	10726.00	17.00	6309.00	0.00	0.00	104.62	-4660.90

TARGETS									
Name	MD [ft]	TVD [ft]	North [ft]	East [ft]	Grid East [US ft]	Grid North [US ft]	Latitude	Longitude	Shape
LATHAM SECTION 14		0.00	20.02	0.31	3307689.09	1361141.22	40°19'10.121"N	104°23'47.454"W	polygon
LATHAM U-A-14HNB BHL REV-1 BHL From Plat (10'FNL & 470'FWL,SEC.14)		6309.00	104.61	-4661.27	3303027.03	1361167.80	40°19'10.952"N	104°24'47.635"W	point
1) LATHAM U-A-14HNB REV-1 BHL From Plat (10'FNL & 470'FWL,SEC.14)	10743.37	6309.00	104.61	-4661.27	3303027.03	1361167.80	40°19'10.952"N	104°24'47.635"W	point
LATHAM HARDLINES (460'FWL/FEL)		6326.00	20.02	0.31	3307689.09	1361141.22	40°19'10.121"N	104°23'47.454"W	polygon
LATHAM U41-A11-14HNB REV-1 BHL From Plat (330'FNL & 470'FWL,SEC.14)		6326.00	-215.21	-4656.90	3303035.38	1360848.07	40°19'07.792"N	104°24'47.578"W	point

SURVEY PROGRAM - Ref Wellbore: LATHAM U-A-14HNB PWB Ref Wellpath: LATHAM U-A-14HNB (REV-B.0) PWP				
Start MD [ft]	End MD [ft]	Positional Uncertainty Model	Log Name/Comment	Wellbore
17.00	10743.37	NaviTrak (Standard)		LATHAM U-A-14HNB PWB



Planned Wellpath Report
LATHAM U-A-14HNB (REV-B.0) PWP
Page 7 of 7



REFERENCE WELLPATH IDENTIFICATION			
Operator	BONANZA CREEK OIL COMPANY	Slot	SLOT#02 LATHAM U-A-14HNB (214'FNL & 179'FEL,SEC.14)
Area	COLORADO	Well	LATHAM U-A-14HNB
Field	WELD COUNTY	Wellbore	LATHAM U-A-14HNB PWB
Facility	SEC.14-T4N-R63W		

DESIGN COMMENTS				
MD [ft]	Inclination [°]	Azimuth [°]	TVD [ft]	Comment
17.00	0.000	0.000	17.00	Tie On
1500.00	0.000	0.000	1500.00	End of Tangent
2000.00	10.000	0.000	1997.47	End of Build
2673.52	10.000	0.000	2660.75	End of Tangent
3173.52	0.000	268.778	3158.21	End of Drop
5779.51	0.000	268.778	5764.20	End of Tangent
6415.87	70.000	268.778	6253.66	End of Build
6485.87	70.000	268.778	6277.60	End of Tangent
6667.69	90.000	268.779	6309.02	End of 3D Arc
10743.37	90.000	268.779	6309.00	End of Tangent