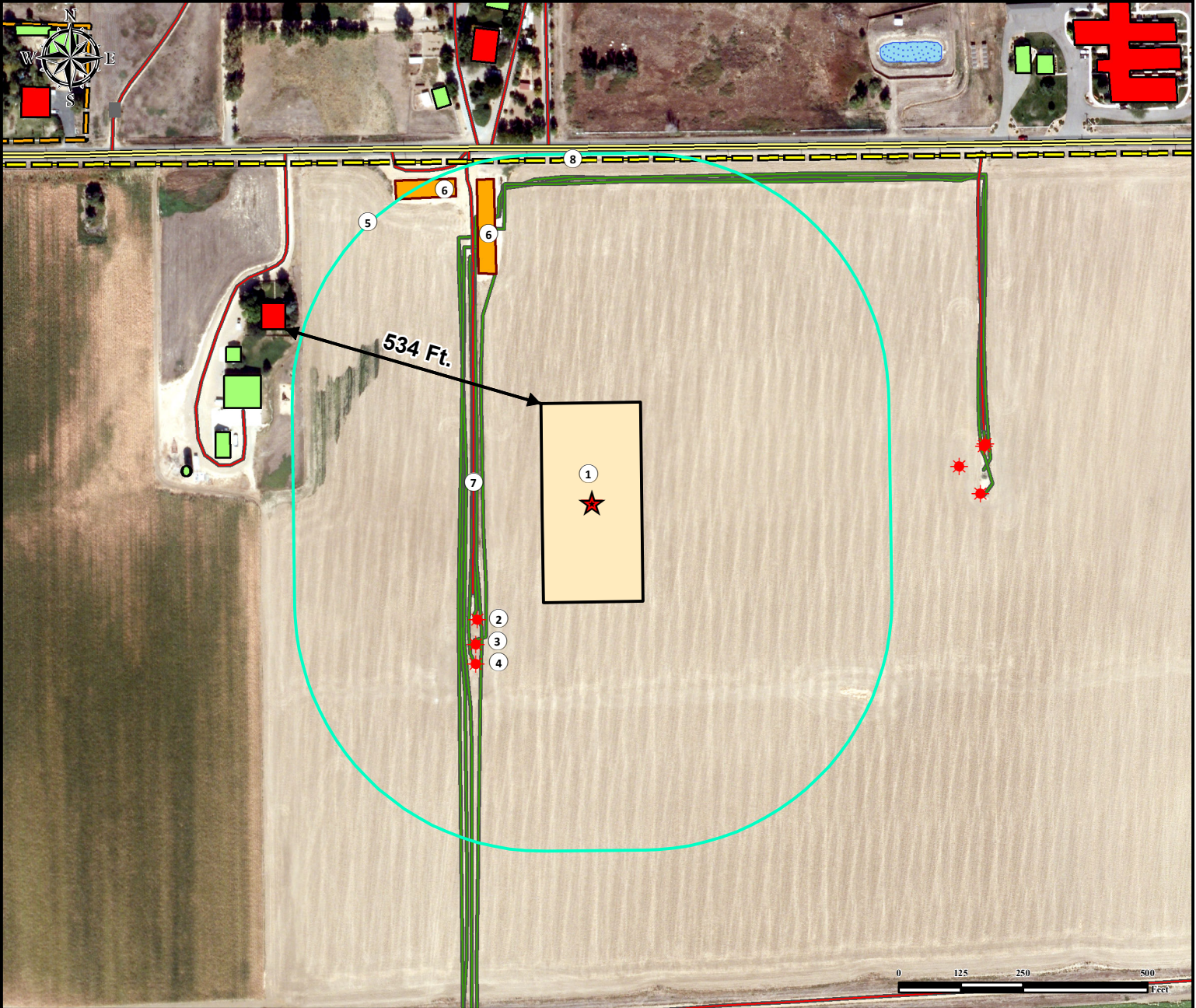


Location Drawing

REYNOLDS CATTLE 6C-19HZ FACILITY

NW¼ NW¼ SECTION 24, TOWNSHIP 3 NORTH, RANGE 68 WEST OF THE 6TH PRINCIPAL MERIDIAN



- | | |
|---|---|
| 1. Proposed Facility REYNOLDS CATTLE 6C-19HZ. | 5. 500' Radius. |
| 2. Existing Well REYNOLDS 4-24 is ±329' SW. | 6. Existing Facilities are ±499' NW and ±673' NW. |
| 3. Existing Well REYNOLDS CATTLE CO. GU TRUE 1 is ±368' SW. | 7. Private Road is ±238' W. |
| 4. Existing Well REYNOLDS 6-24 is ±399' SW. | 8. Powerline is ±687' N. |

Legend	
	Existing Well
	Gate
	Proposed Facility
	500' Radius
	Facility Enclosure
	Building
	Building Unit
	Pond
	Powerline
	Private Road
	Pipeline
	Fence
	Public Road

Reference Location
** All measurements are made from Reference Point **
Lat: 40.217003° Long:-104.956490° (NAD83)
Elevation: 4933 Feet
Surface Use: Irrigated Crop



Use our resources to find yours!
www.petro-fs.com
 (303) 928-7128

Field Date: 09/23/2013
 Drafting Date: 02/03/2014
 Drafter: PAH
 Revision: 2

FNL: 713' FWL: 1210'
 Data Sources:
 - Aerial courtesy of Anadarko Petroleum Corporation (2010)

Nearest Building Unit: ±706' NW
 Prepared for:
KERR-MCGEE OIL & GAS ONSHORE LP