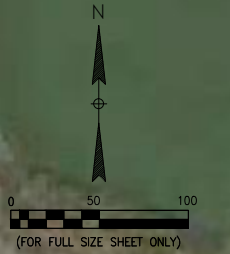


# Reynolds Cattle Tank Battery 6C-19HZ Facility Layout Drawing



THIS DRAWING AND THE DESIGN IT COVERS ARE CONFIDENTIAL AND REMAIN THE PROPERTY OF ANADARKO PETROLEUM CORPORATION AND SHALL NOT BE DISCLOSED TO OTHERS OR REPRODUCED IN ANY MANNER OR USED FOR ANY PURPOSE WHATSOEVER EXCEPT BY WRITTEN PERMISSION BY THE OWNER.



AREA PLAN  
SCALE: AS NOTED

**NOTES:**  
1. EQUIPMENT PLACEMENT IS APPROXIMATE AND SUBJECT TO MINOR MODIFICATION DUE TO SITE SPECIFIC CIRCUMSTANCES.

| REFERENCE DRAWINGS |   | REVISIONS |                   |     |          |
|--------------------|---|-----------|-------------------|-----|----------|
| DWG. NO.           | TITLE   | NO.       | DESCRIPTION       | BY  | DATE     |
| RCA6-GA-101        | REYNOLDS CATTLE 6C - PLOT PLAN WITH EQUIPMENT LOCATIONS | 1         | ISSUED FOR PERMIT | MAK | 02/24/14 |
|                    |   |           |                   |     |          |
|                    |   |           |                   |     |          |
|                    |   |           |                   |     |          |
|                    |   |           |                   |     |          |

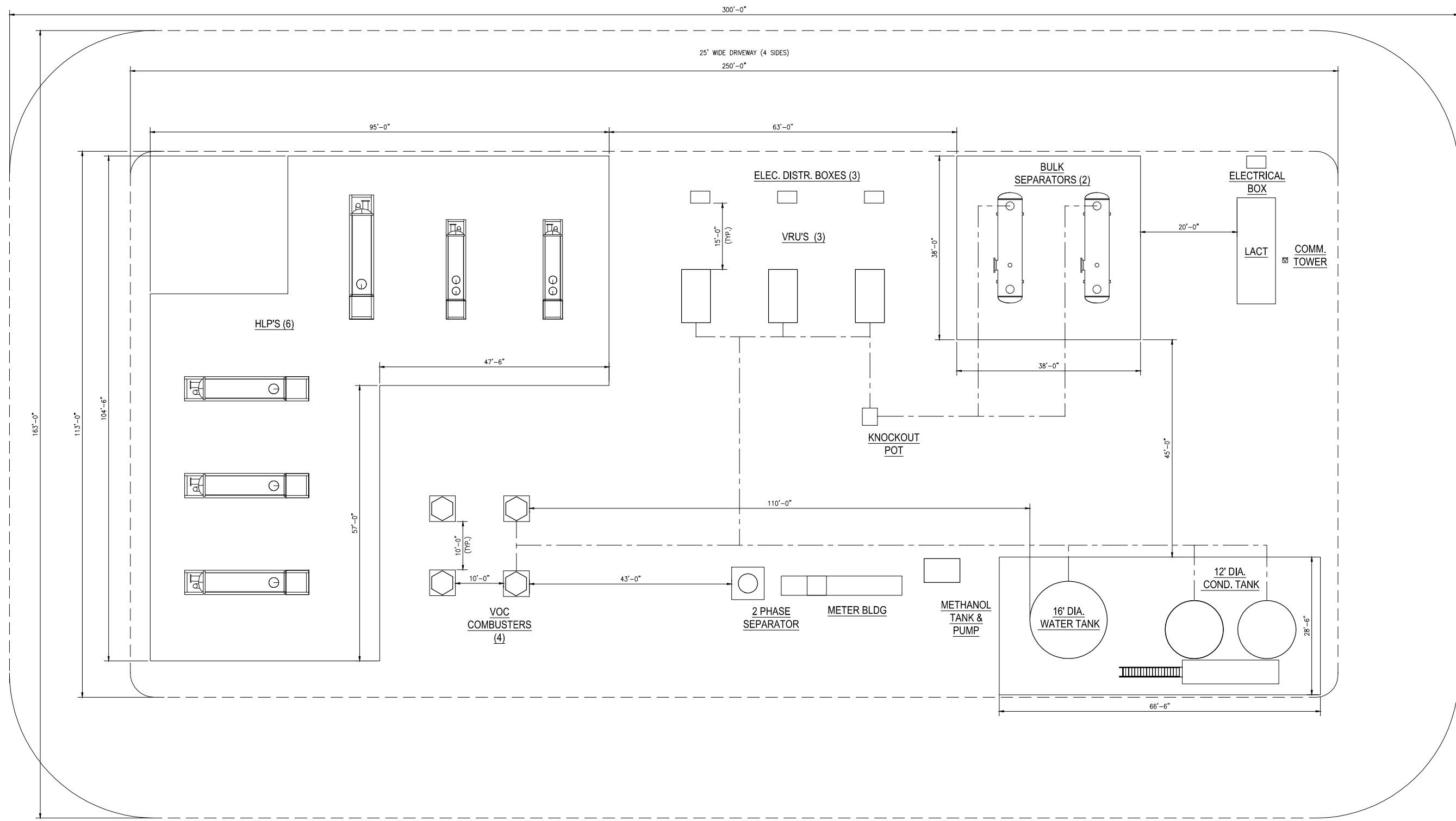
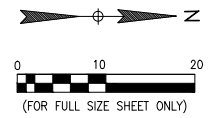


PIPELINE STRATEGIES & INTEGRITY

| GREATER WATTENBERG AREA<br>REYNOLDS CATTLE<br>AREA PLAN |                         |                    |
|---|-------------------------|--------------------|
| DRAWN BY: MAK   | CREATION DATE: 02/12/14 | AFE No.:           |
| APPROVED:   | APPR. DATE:             | DWG. No.:          |
| SCALE: 1"=50' (FULL SIZE)                               |                         | <b>RCA6-GA-100</b> |
| SHEET No. 1 OF 1  |                         | 0                  |

FILE LOCATION: P:\Engineering\Projects\Anadarko\Greater Wattenberg Area\2014 Permits\Tank Battery Permits\Reynolds Cattle 6C\RCA6-GA-100.DWG  
LAST SAVED: 2/21/2014 BY: Michelle Knudsen  
PLOT STYLE: Anadarko Plotting 11x17.ctb

THIS DRAWING AND THE DESIGN IT COVERS ARE CONFIDENTIAL AND REMAIN THE PROPERTY OF ANADARKO PETROLEUM CORPORATION AND SHALL NOT BE DISCLOSED TO OTHERS OR REPRODUCED IN ANY MANNER OR USED FOR ANY PURPOSE WHATSOEVER EXCEPT BY WRITTEN PERMISSION BY THE OWNER.



**PLOT PLAN**  
SCALE: AS NOTED

**LEGEND**

- DRIVEWAY
- ABOVE GRADE PIPE

**NOTES:**  
1. EQUIPMENT PLACEMENT IS APPROXIMATE AND SUBJECT TO MINOR MODIFICATION DUE TO SITE SPECIFIC CIRCUMSTANCES.

| REFERENCE DRAWINGS |                                 | REVISIONS |                   |          |      |
|--------------------|---------------------------------|-----------|-------------------|----------|------|
| DWG. NO.           | TITLE                           | NO.       | DESCRIPTION       | DATE     | DATE |
| RCA6-GA-100        | REYNOLDS CATTLE 6C -- AREA PLAN |           |                   |          |      |
|                    |                                 | 1         | ISSUED FOR PERMIT | 02/24/14 |      |

**PIPELINE STRATEGIES & INTEGRITY**

| GREATER WATTENBERG AREA<br>REYNOLDS CATTLE<br>PLOT PLAN WITH EQUIPMENT LOCATIONS |                         |                    |
|--|-------------------------|--------------------|
| DRAWN BY: MAK  | CREATION DATE: 02/13/14 | AFE No.:           |
| APPROVED:  | APPR. DATE:             | DWG. No.:          |
| SCALE: 1"=10' (FULL SIZE)  |                         | <b>RCA6-GA-101</b> |
| SHEET No. 1 OF 1   |                         |                    |

FILE LOCATION: P:\Engineering\Projects\Anadarko\Greater Wattenberg Area\2014 Permits\Reynolds Cattle 6C\RCA6-GA-101.dwg  
LAST SAVED: 2/14/2014 BY: Michelle Knudsen  
PLOT STYLE: Anadarko Piping 11x17.dwg