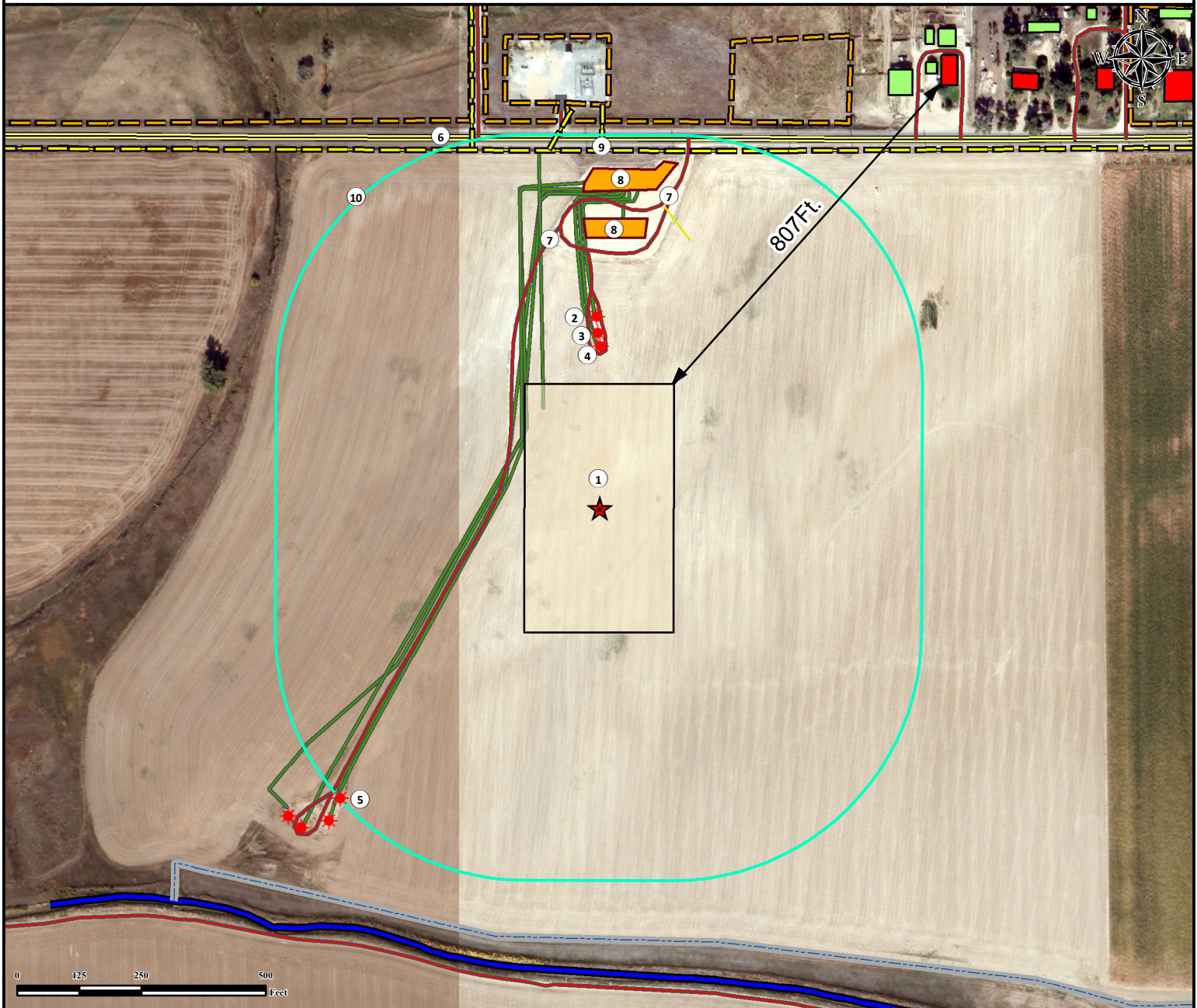


# Location Drawing

## REYNOLDS CATTLE 31C-23HZ FACILITY

NE¼ NE¼ SECTION 23, TOWNSHIP 3 NORTH, RANGE 68 WEST OF THE 6TH PRINCIPAL MERIDIAN



1. Proposed Facility REYNOLDS CATTLE 31C-23HZ.
2. Existing Well REYNOLDS 27-23X is  $\pm 385'$  N.
3. Existing Well REYNOLDS 2-23 is  $\pm 352'$  N.
4. Existing Well REYNOLDS 1-23 is  $\pm 325'$  N.
5. Existing Well REYNOLDS 8-23 is  $\pm 782'$  SW.

6. County Road 32 is  $\pm 745'$  N.
7. Private Roads are  $\pm 203'$  W,  $\pm 309'$  N, and  $\pm 514'$  N.
8. Existing Facilities are  $\pm 543'$  N and  $\pm 638'$  N.
9. Powerlines are  $\pm 719'$  N and  $\pm 721'$  NW.
10. 500' Radius.

### Legend

- ★ Existing Well
- Existing Well
- Proposed Facility
- 500' Radius

- Facility Enclosure
- Building
- Building Unit
- Ditch

- Fence
- Pipeline
- Private Road
- Public Road
- Powerline

### Reference Location

\*\* All measurements are made from Reference Point ★ \*\*  
 Lat: 40.216874° Long: -104.964665° (NAD83)  
 Elevation: 4936 Feet

Surface Use: Irrigated Crop

Nearest Building Unit: >1000' NE



Use our resources to find yours!  
[www.petro-fs.com](http://www.petro-fs.com)  
 (303) 928-7128

Field Date: 09/23/2013  
 Drafting Date: 02/03/2014  
 Drafter: PAH  
 Revision: 4

FNL: 745' FEL: 1071'

Data Sources:  
 - Aerial courtesy of Anadarko Petroleum Corporation (2010)

Prepared for:

**Anadarko**  
 Petroleum Corporation  
**KERR-MCGEE OIL & GAS ONSHORE LP**