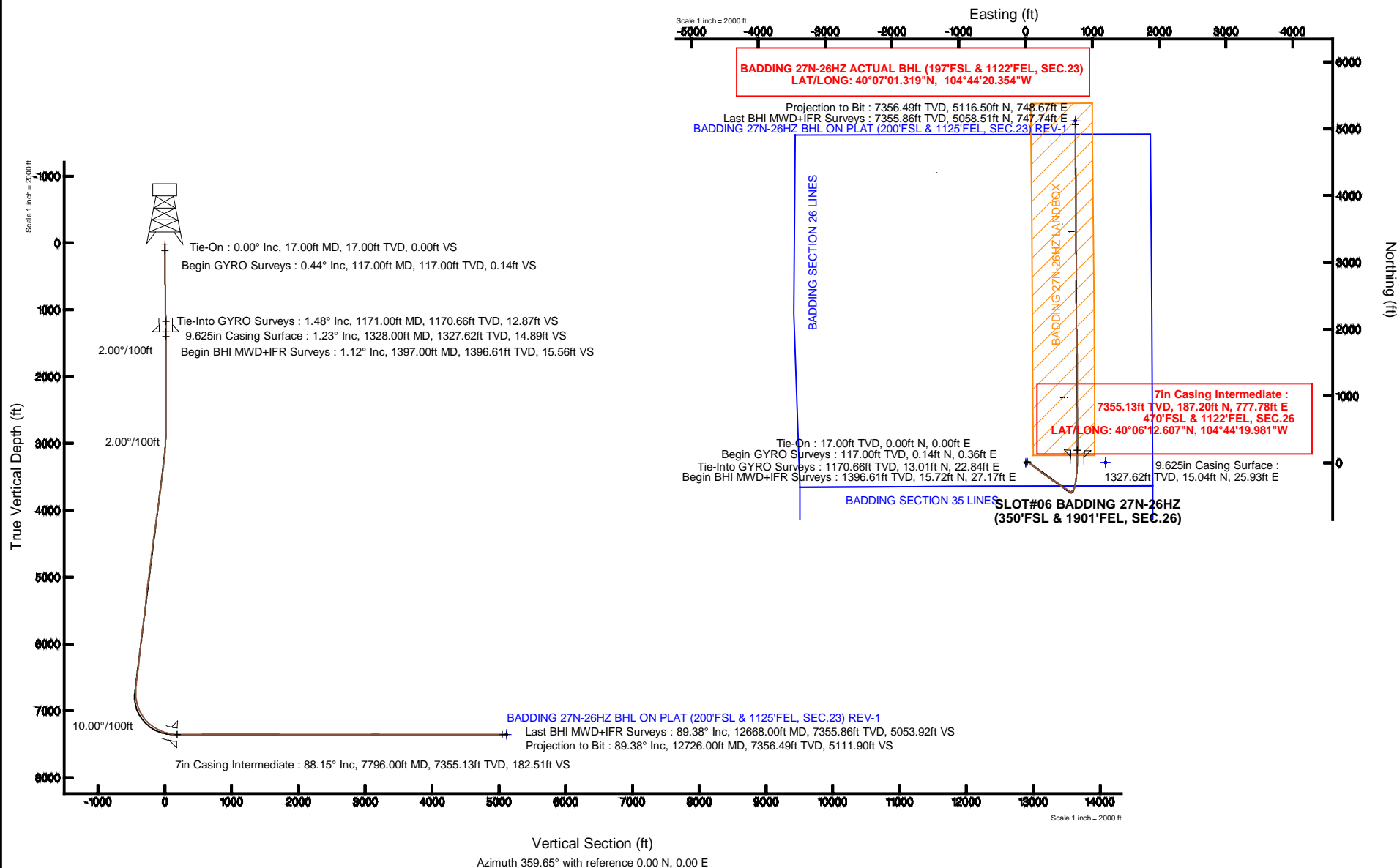


KERR-MCGEE OIL & GAS ONSHORE LP

Location: COLORADO Slot: SLOT#06 BADDING 27N-26HZ (350°FSL & 1901°FEL, SEC.26)
 Field: WELD COUNTY (KERR MCGEE) Well: BADDING 27N-26HZ
 Facility: SEC.26-T2N-R66W Wellbore: BADDING 27N-26HZ PWB

Plot reference wellpath is BADDING 27N-26HZ (REV-A.0) PWP

True vertical depths are referenced to XTREME 8 (17KB) (RKB)	Grid System: NAD83 / Lambert Colorado SP, Northern Zone (501), US feet
Measured depths are referenced to XTREME 8 (17KB) (RKB)	North Reference: True north
XTREME 8 (17KB) (RKB) to Mean Sea Level: 5129 feet	Scale: True distance
Mean Sea Level to Mud line (At Slot: SLOT#06 BADDING 27N-26HZ (350°FSL & 1901°FEL, SEC.26)): 0 feet	Depths are in feet
Coordinates are in feet referenced to Slot	Created by: precain on 27/Feb/2014



REFERENCE WELLPATH IDENTIFICATION			
Operator	KERR-MCGEE OIL & GAS ONSHORE LP	Slot	SLOT#06 BADDING 27N-26HZ (350'FSL & 1901'FEL, SEC.26)
Area	COLORADO	Well	BADDING 27N-26HZ
Field	WELD COUNTY (KERR MCGEE)	Wellbore	BADDING 27N-26HZ AWB
Facility	SEC.26-T2N-R66W		

REPORT SETUP INFORMATION			
Projection System	NAD83 / Lambert Colorado SP, Northern Zone (501), US feet	Software System	WellArchitect® 4.0.0
North Reference	True	User	Precain
Scale	0.99996	Report Generated	27/Feb/2014 at 13:35
Convergence at slot	n/a	Database/Source file	WellArchitectDB/BADDING_27N-26HZ_AWB.xml

WELLPATH LOCATION						
	Local coordinates		Grid coordinates		Geographic coordinates	
	North[ft]	East[ft]	Easting[US ft]	Northing[US ft]	Latitude	Longitude
Slot Location	-5.46	-1196.94	3212127.14	1281269.92	40°06'10.757"N	104°44'29.990"W
Facility Reference Pt			3213323.93	1281285.67	40°06'10.811"N	104°44'14.587"W
Field Reference Pt			3197771.84	1268891.29	40°04'09.600"N	104°47'36.000"W

WELLPATH DATUM			
Calculation method	Minimum curvature	XTREME 8 (17'KB) (RKB) to Facility Vertical Datum	5129.00ft
Horizontal Reference Pt	Slot	XTREME 8 (17'KB) (RKB) to Mean Sea Level	5129.00ft
Vertical Reference Pt	XTREME 8 (17'KB) (RKB)	XTREME 8 (17'KB) (RKB) to Mud Line at Slot (SLOT#06 BADDING 27N-26HZ (350'FSL & 1901'FEL, SEC.26))	5129.00ft
MD Reference Pt	XTREME 8 (17'KB) (RKB)	Section Origin	N 0.00, E 0.00 ft
Field Vertical Reference	Mean Sea Level	Section Azimuth	359.65°

Actual Wellpath Report

BADDING 27N-26HZ AWP

Page 2 of 7

REFERENCE WELLPATH IDENTIFICATION

Operator	KERR-MCGEE OIL & GAS ONSHORE LP	Slot	SLOT#06 BADDING 27N-26HZ (350'FSL & 1901'FEL, SEC.26)
Area	COLORADO	Well	BADDING 27N-26HZ
Field	WELD COUNTY (KERR MCGEE)	Wellbore	BADDING 27N-26HZ AWP
Facility	SEC.26-T2N-R66W		

WELLPATH DATA (153 stations) † = interpolated/extrapolated station

MD [ft]	Inclination [°]	Azimuth [°]	TVD [ft]	Vert Sect [ft]	North [ft]	East [ft]	Latitude	Longitude	DLS [°/100ft]	Comments
0.00†	0.000	67.960	0.00	0.00	0.00	0.00	40°06'10.757"N	104°44'29.990"W	0.00	
17.00	0.000	67.960	17.00	0.00	0.00	0.00	40°06'10.757"N	104°44'29.990"W	0.00	Tie-On
117.00	0.440	67.960	117.00	0.14	0.14	0.36	40°06'10.758"N	104°44'29.986"W	0.44	Begin GYRO Surveys
217.00	1.040	73.930	216.99	0.53	0.54	1.58	40°06'10.762"N	104°44'29.970"W	0.60	
317.00	1.270	64.790	316.97	1.24	1.26	3.46	40°06'10.769"N	104°44'29.946"W	0.29	
417.00	1.430	68.740	416.94	2.15	2.19	5.62	40°06'10.778"N	104°44'29.918"W	0.19	
517.00	1.440	65.660	516.91	3.11	3.16	7.93	40°06'10.788"N	104°44'29.888"W	0.08	
617.00	1.590	59.190	616.88	4.32	4.39	10.27	40°06'10.800"N	104°44'29.858"W	0.23	
717.00	1.630	61.360	716.84	5.70	5.78	12.71	40°06'10.814"N	104°44'29.827"W	0.07	
817.00	1.560	62.660	816.80	6.99	7.09	15.17	40°06'10.827"N	104°44'29.795"W	0.08	
917.00	1.600	51.590	916.76	8.47	8.58	17.47	40°06'10.842"N	104°44'29.766"W	0.31	
1017.00	1.600	47.880	1016.72	10.26	10.38	19.60	40°06'10.859"N	104°44'29.738"W	0.10	
1117.00	1.550	52.060	1116.68	12.02	12.15	21.70	40°06'10.877"N	104°44'29.711"W	0.13	
1171.00	1.480	54.080	1170.66	12.87	13.01	22.84	40°06'10.885"N	104°44'29.696"W	0.16	Tie-Into GYRO Surveys
1397.00	1.120	63.000	1396.61	15.56	15.72	27.17	40°06'10.912"N	104°44'29.641"W	0.18	Begin BHI MWD+IFR Surveys
1488.00	0.890	72.100	1487.59	16.17	16.34	28.64	40°06'10.918"N	104°44'29.622"W	0.31	
1609.00	0.780	272.470	1608.59	16.49	16.67	28.71	40°06'10.922"N	104°44'29.621"W	1.36	
1701.00	0.690	263.310	1700.58	16.46	16.63	27.53	40°06'10.921"N	104°44'29.636"W	0.16	
1884.00	0.920	267.250	1883.56	16.28	16.43	24.97	40°06'10.919"N	104°44'29.669"W	0.13	
1969.00	0.520	55.680	1968.56	16.47	16.62	24.61	40°06'10.921"N	104°44'29.674"W	1.64	
2139.00	0.330	72.160	2138.55	17.05	17.20	25.71	40°06'10.927"N	104°44'29.660"W	0.13	
2395.00	0.310	38.710	2394.55	17.81	17.97	26.85	40°06'10.934"N	104°44'29.645"W	0.07	
2650.00	0.550	97.430	2649.54	18.18	18.35	28.49	40°06'10.938"N	104°44'29.624"W	0.18	
2736.00	1.760	119.990	2735.53	17.45	17.63	30.04	40°06'10.931"N	104°44'29.604"W	1.48	
2821.00	2.650	124.940	2820.46	15.66	15.86	32.79	40°06'10.913"N	104°44'29.568"W	1.07	
2907.00	4.130	128.690	2906.31	12.56	12.78	36.83	40°06'10.883"N	104°44'29.516"W	1.74	
2992.00	4.500	134.080	2991.07	8.30	8.55	41.62	40°06'10.841"N	104°44'29.455"W	0.65	
3077.00	6.050	125.760	3075.71	3.32	3.61	47.65	40°06'10.792"N	104°44'29.377"W	2.03	
3162.00	8.150	123.500	3160.05	-2.67	-2.33	56.31	40°06'10.734"N	104°44'29.266"W	2.49	
3247.00	9.850	123.350	3244.00	-10.06	-9.66	67.41	40°06'10.661"N	104°44'29.123"W	2.00	
3333.00	11.670	126.490	3328.49	-19.36	-18.87	80.54	40°06'10.570"N	104°44'28.954"W	2.22	
3418.00	12.140	128.590	3411.66	-30.13	-29.56	94.44	40°06'10.465"N	104°44'28.775"W	0.75	
3503.00	12.870	127.780	3494.64	-41.59	-40.94	108.91	40°06'10.352"N	104°44'28.589"W	0.88	
3589.00	11.590	125.780	3578.69	-52.60	-51.85	123.49	40°06'10.244"N	104°44'28.401"W	1.57	
3674.00	12.310	123.920	3661.85	-62.73	-61.90	137.94	40°06'10.145"N	104°44'28.215"W	0.96	
3759.00	12.220	122.370	3744.91	-72.70	-71.78	153.05	40°06'10.047"N	104°44'28.021"W	0.40	
3844.00	12.560	129.880	3827.93	-83.53	-82.52	167.74	40°06'09.941"N	104°44'27.832"W	1.94	
3929.00	11.230	130.300	3911.10	-94.89	-93.80	181.15	40°06'09.830"N	104°44'27.659"W	1.57	
4015.00	11.460	130.510	3995.42	-105.93	-104.76	194.03	40°06'09.721"N	104°44'27.493"W	0.27	
4100.00	13.540	133.900	4078.41	-118.40	-117.15	207.62	40°06'09.599"N	104°44'27.319"W	2.59	
4185.00	11.780	133.090	4161.34	-131.31	-129.98	221.13	40°06'09.472"N	104°44'27.145"W	2.08	
4271.00	11.370	127.510	4245.59	-142.55	-141.14	234.27	40°06'09.362"N	104°44'26.976"W	1.39	
4356.00	14.280	125.340	4328.46	-153.81	-152.31	249.47	40°06'09.252"N	104°44'26.780"W	3.47	
4441.00	14.320	125.620	4410.83	-166.09	-164.49	266.56	40°06'09.131"N	104°44'26.560"W	0.09	
4526.00	12.710	125.220	4493.47	-177.71	-176.01	282.75	40°06'09.017"N	104°44'26.352"W	1.90	

REFERENCE WELLPATH IDENTIFICATION

Operator	KERR-MCGEE OIL & GAS ONSHORE LP	Slot	SLOT#06 BADDING 27N-26HZ (350'FSL & 1901'FEL, SEC.26)
Area	COLORADO	Well	BADDING 27N-26HZ
Field	WELD COUNTY (KERR MCGEE)	Wellbore	BADDING 27N-26HZ AWB
Facility	SEC.26-T2N-R66W		

WELLPATH DATA (153 stations)

MD [ft]	Inclination [°]	Azimuth [°]	TVD [ft]	Vert Sect [ft]	North [ft]	East [ft]	Latitude	Longitude	DLS [°/100ft]	Comments
4612.00	12.960	124.610	4577.32	-188.73	-186.94	298.41	40°06'08.909"N	104°44'26.150"W	0.33	
4697.00	13.220	119.390	4660.12	-199.02	-197.13	314.73	40°06'08.809"N	104°44'25.940"W	1.42	
4782.00	11.480	118.490	4743.15	-207.92	-205.93	330.63	40°06'08.722"N	104°44'25.736"W	2.06	
4868.00	12.620	125.440	4827.25	-217.54	-215.46	345.81	40°06'08.628"N	104°44'25.540"W	2.14	
4953.00	11.810	127.780	4910.33	-228.34	-226.17	360.25	40°06'08.522"N	104°44'25.354"W	1.12	
5038.00	12.520	130.150	4993.42	-239.69	-237.44	374.17	40°06'08.410"N	104°44'25.175"W	1.02	
5123.00	13.660	126.670	5076.21	-251.72	-249.38	389.26	40°06'08.292"N	104°44'24.981"W	1.63	
5209.00	12.170	127.130	5160.03	-263.35	-260.92	404.63	40°06'08.178"N	104°44'24.783"W	1.74	
5294.00	11.530	119.280	5243.23	-273.00	-270.48	419.19	40°06'08.084"N	104°44'24.596"W	2.04	
5379.00	11.080	115.190	5326.58	-280.72	-278.11	433.99	40°06'08.008"N	104°44'24.405"W	1.08	
5464.00	11.590	117.870	5409.92	-288.28	-285.58	448.93	40°06'07.935"N	104°44'24.213"W	0.86	
5549.00	12.090	121.830	5493.11	-297.05	-294.27	464.04	40°06'07.849"N	104°44'24.019"W	1.12	
5635.00	11.950	125.650	5577.23	-307.08	-304.20	478.93	40°06'07.751"N	104°44'23.827"W	0.94	
5720.00	11.730	127.260	5660.42	-317.53	-314.56	492.95	40°06'07.648"N	104°44'23.647"W	0.47	
5805.00	12.650	129.590	5743.50	-328.77	-325.73	507.00	40°06'07.538"N	104°44'23.466"W	1.23	
5890.00	12.430	127.800	5826.48	-340.40	-337.27	521.40	40°06'07.424"N	104°44'23.281"W	0.53	
5975.00	12.130	121.970	5909.54	-350.82	-347.60	536.21	40°06'07.322"N	104°44'23.090"W	1.50	
6061.00	11.230	127.980	5993.76	-360.85	-357.54	550.48	40°06'07.223"N	104°44'22.906"W	1.76	
6146.00	10.460	124.130	6077.24	-370.35	-366.96	563.39	40°06'07.130"N	104°44'22.740"W	1.24	
6231.00	10.590	120.930	6160.81	-378.77	-375.31	576.47	40°06'07.048"N	104°44'22.572"W	0.70	
6317.00	10.680	121.950	6245.33	-387.13	-383.59	590.01	40°06'06.966"N	104°44'22.398"W	0.24	
6402.00	12.260	119.410	6328.63	-395.82	-392.19	604.56	40°06'06.881"N	104°44'22.210"W	1.95	
6487.00	13.150	122.950	6411.55	-405.61	-401.88	620.54	40°06'06.785"N	104°44'22.005"W	1.39	
6572.00	13.240	124.120	6494.31	-416.42	-412.60	636.71	40°06'06.679"N	104°44'21.797"W	0.33	
6657.00	10.750	120.110	6577.45	-425.95	-422.03	651.63	40°06'06.586"N	104°44'21.605"W	3.09	
6742.00	10.740	116.530	6660.96	-433.55	-429.55	665.57	40°06'06.512"N	104°44'21.425"W	0.79	
6785.00	10.940	101.890	6703.20	-436.22	-432.18	673.15	40°06'06.486"N	104°44'21.328"W	6.40	
6827.00	12.240	82.920	6744.36	-436.55	-432.45	681.47	40°06'06.483"N	104°44'21.221"W	9.54	
6870.00	13.400	63.760	6786.30	-433.84	-429.69	690.47	40°06'06.510"N	104°44'21.105"W	10.20	
6913.00	13.770	56.110	6828.10	-428.83	-424.63	699.19	40°06'06.560"N	104°44'20.993"W	4.26	
6955.00	16.090	44.970	6868.69	-421.97	-417.72	707.45	40°06'06.629"N	104°44'20.886"W	8.76	
6998.00	19.390	34.100	6909.65	-411.89	-407.59	715.67	40°06'06.729"N	104°44'20.781"W	10.84	
7041.00	22.850	24.440	6949.77	-398.42	-394.07	723.13	40°06'06.862"N	104°44'20.685"W	11.39	
7082.00	25.460	17.800	6987.18	-382.81	-378.43	729.12	40°06'07.017"N	104°44'20.608"W	9.18	
7124.00	28.540	13.640	7024.60	-364.49	-360.07	734.25	40°06'07.198"N	104°44'20.542"W	8.60	
7166.00	31.230	12.390	7061.02	-344.13	-339.69	738.95	40°06'07.400"N	104°44'20.481"W	6.57	
7209.00	35.320	11.780	7096.96	-321.09	-316.62	743.88	40°06'07.628"N	104°44'20.418"W	9.54	
7252.00	39.530	9.500	7131.10	-295.45	-290.94	748.68	40°06'07.882"N	104°44'20.356"W	10.31	
7294.00	44.240	7.480	7162.36	-267.74	-263.22	752.80	40°06'08.156"N	104°44'20.303"W	11.66	
7337.00	49.010	5.510	7191.89	-236.72	-232.17	756.31	40°06'08.462"N	104°44'20.258"W	11.58	
7379.00	54.000	4.180	7218.02	-203.99	-199.43	759.07	40°06'08.786"N	104°44'20.222"W	12.14	
7422.00	57.360	3.670	7242.26	-168.58	-164.00	761.50	40°06'09.136"N	104°44'20.191"W	7.88	
7465.00	60.470	3.500	7264.46	-131.85	-127.25	763.80	40°06'09.499"N	104°44'20.161"W	7.24	
7507.00	63.630	2.970	7284.14	-94.83	-90.22	765.89	40°06'09.865"N	104°44'20.134"W	7.61	
7550.00	67.560	3.240	7301.91	-55.75	-51.12	768.01	40°06'10.251"N	104°44'20.107"W	9.16	

Actual Wellpath Report

BADDING 27N-26HZ AWP

Page 4 of 7

REFERENCE WELLPATH IDENTIFICATION

Operator	KERR-MCGEE OIL & GAS ONSHORE LP	Slot	SLOT#06 BADDING 27N-26HZ (350'FSL & 1901'FEL, SEC.26)
Area	COLORADO	Well	BADDING 27N-26HZ
Field	WELD COUNTY (KERR MCGEE)	Wellbore	BADDING 27N-26HZ AWB
Facility	SEC.26-T2N-R66W		

WELLPATH DATA (153 stations) † = interpolated/extrapolated station

MD [ft]	Inclination [°]	Azimuth [°]	TVD [ft]	Vert Sect [ft]	North [ft]	East [ft]	Latitude	Longitude	DLS [°/100ft]	Comments
7592.00	70.290	3.070	7317.01	-16.63	-12.00	770.17	40°06'10.638"N	104°44'20.079"W	6.51	
7635.00	73.150	3.190	7330.50	24.12	28.77	772.40	40°06'11.041"N	104°44'20.050"W	6.66	
7678.00	76.990	2.310	7341.57	65.60	70.26	774.39	40°06'11.451"N	104°44'20.025"W	9.15	
7721.00	81.580	1.590	7349.56	107.80	112.48	775.82	40°06'11.868"N	104°44'20.006"W	10.80	
7763.00	87.010	1.440	7353.74	149.56	154.24	776.93	40°06'12.281"N	104°44'19.992"W	12.93	
7796.00†	88.153	1.525	7355.13	182.51	187.20	777.78	40°06'12.607"N	104°44'19.981"W	3.47	7" Casing Point
7860.00	90.370	1.690	7355.96	246.46	251.16	779.58	40°06'13.239"N	104°44'19.958"W	3.47	
7945.00	91.110	359.950	7354.86	331.43	336.14	780.79	40°06'14.078"N	104°44'19.942"W	2.22	
8030.00	90.640	359.140	7353.56	416.42	421.13	780.12	40°06'14.918"N	104°44'19.951"W	1.10	
8116.00	90.180	359.200	7352.94	502.42	507.12	778.87	40°06'15.768"N	104°44'19.967"W	0.54	
8201.00	90.550	358.390	7352.40	587.41	592.10	777.08	40°06'16.608"N	104°44'19.990"W	1.05	
8286.00	89.780	359.660	7352.16	672.40	677.08	775.64	40°06'17.448"N	104°44'20.008"W	1.75	
8457.00	91.470	359.510	7350.29	843.38	848.06	774.40	40°06'19.137"N	104°44'20.024"W	0.99	
8542.00	90.650	359.870	7348.72	928.37	933.04	773.94	40°06'19.977"N	104°44'20.030"W	1.05	
8628.00	89.960	0.660	7348.26	1014.36	1019.04	774.34	40°06'20.827"N	104°44'20.025"W	1.22	
8713.00	89.100	359.890	7348.96	1099.35	1104.03	774.75	40°06'21.667"N	104°44'20.020"W	1.36	
8798.00	90.000	359.920	7349.63	1184.35	1189.03	774.61	40°06'22.507"N	104°44'20.022"W	1.06	
8883.00	89.220	359.540	7350.21	1269.34	1274.03	774.20	40°06'23.347"N	104°44'20.027"W	1.02	
8968.00	90.030	359.980	7350.76	1354.34	1359.02	773.85	40°06'24.187"N	104°44'20.031"W	1.08	
9054.00	89.280	358.840	7351.28	1440.34	1445.02	772.96	40°06'25.037"N	104°44'20.043"W	1.59	
9139.00	90.120	359.650	7351.73	1525.33	1530.01	771.84	40°06'25.876"N	104°44'20.057"W	1.37	
9224.00	89.560	359.480	7351.96	1610.33	1615.00	771.20	40°06'26.716"N	104°44'20.065"W	0.69	
9310.00	89.560	359.690	7352.62	1696.33	1701.00	770.57	40°06'27.566"N	104°44'20.073"W	0.24	
9395.00	89.220	358.350	7353.53	1781.32	1785.98	769.12	40°06'28.406"N	104°44'20.092"W	1.63	
9480.00	89.560	358.220	7354.43	1866.29	1870.94	766.58	40°06'29.246"N	104°44'20.125"W	0.43	
9566.00	90.370	358.540	7354.49	1952.26	1956.90	764.15	40°06'30.095"N	104°44'20.156"W	1.01	
9651.00	89.930	359.400	7354.26	2037.26	2041.89	762.62	40°06'30.935"N	104°44'20.175"W	1.14	
9736.00	89.310	359.430	7354.83	2122.25	2126.88	761.75	40°06'31.775"N	104°44'20.187"W	0.73	
9821.00	90.430	358.990	7355.02	2207.25	2211.87	760.58	40°06'32.615"N	104°44'20.202"W	1.42	
9907.00	89.130	358.480	7355.35	2293.24	2297.84	758.68	40°06'33.464"N	104°44'20.226"W	1.62	
9992.00	90.240	359.350	7355.82	2378.22	2382.83	757.07	40°06'34.304"N	104°44'20.247"W	1.66	
10077.00	90.090	359.300	7355.57	2463.22	2467.82	756.07	40°06'35.144"N	104°44'20.260"W	0.19	
10162.00	89.530	0.010	7355.85	2548.22	2552.82	755.56	40°06'35.984"N	104°44'20.266"W	1.06	
10248.00	90.620	0.680	7355.74	2634.21	2638.81	756.08	40°06'36.834"N	104°44'20.259"W	1.49	
10333.00	89.780	0.480	7355.44	2719.20	2723.81	756.94	40°06'37.674"N	104°44'20.248"W	1.02	
10418.00	89.690	0.430	7355.84	2804.19	2808.80	757.61	40°06'38.514"N	104°44'20.240"W	0.12	
10503.00	90.900	1.190	7355.40	2889.17	2893.79	758.81	40°06'39.354"N	104°44'20.224"W	1.68	
10589.00	90.580	359.430	7354.29	2975.15	2979.78	759.28	40°06'40.203"N	104°44'20.218"W	2.08	
10674.00	91.040	359.030	7353.09	3060.14	3064.76	758.14	40°06'41.043"N	104°44'20.233"W	0.72	
10759.00	90.300	358.750	7352.09	3145.13	3149.74	756.49	40°06'41.883"N	104°44'20.254"W	0.93	
10845.00	88.670	359.090	7352.87	3231.12	3235.72	754.87	40°06'42.733"N	104°44'20.275"W	1.94	
10930.00	89.470	359.180	7354.25	3316.10	3320.70	753.58	40°06'43.572"N	104°44'20.291"W	0.95	
11015.00	90.060	358.850	7354.60	3401.09	3405.68	752.12	40°06'44.412"N	104°44'20.310"W	0.80	
11100.00	88.320	0.120	7355.80	3486.08	3490.67	751.36	40°06'45.252"N	104°44'20.320"W	2.53	
11186.00	88.880	359.890	7357.90	3572.05	3576.64	751.37	40°06'46.102"N	104°44'20.320"W	0.70	

Actual Wellpath Report

BADDING 27N-26HZ AWP

Page 5 of 7

REFERENCE WELLPATH IDENTIFICATION

Operator	KERR-MCGEE OIL & GAS ONSHORE LP	Slot	SLOT#06 BADDING 27N-26HZ (350'FSL & 1901'FEL, SEC.26)
Area	COLORADO	Well	BADDING 27N-26HZ
Field	WELD COUNTY (KERR MCGEE)	Wellbore	BADDING 27N-26HZ AWP
Facility	SEC.26-T2N-R66W		

WELLPATH DATA (153 stations)

MD [ft]	Inclination [°]	Azimuth [°]	TVD [ft]	Vert Sect [ft]	North [ft]	East [ft]	Latitude	Longitude	DLS [°/100ft]	Comments
11271.00	89.280	359.870	7359.26	3657.04	3661.63	751.19	40°06'46.941"N	104°44'20.322"W	0.47	
11356.00	90.830	359.960	7359.18	3742.04	3746.63	751.06	40°06'47.781"N	104°44'20.324"W	1.83	
11442.00	90.670	0.030	7358.06	3828.03	3832.62	751.06	40°06'48.631"N	104°44'20.324"W	0.20	
11527.00	90.430	0.360	7357.24	3913.02	3917.62	751.34	40°06'49.471"N	104°44'20.320"W	0.48	
11612.00	90.300	0.070	7356.70	3998.01	4002.61	751.66	40°06'50.311"N	104°44'20.316"W	0.37	
11697.00	89.810	0.090	7356.62	4083.01	4087.61	751.78	40°06'51.151"N	104°44'20.314"W	0.58	
11782.00	90.340	0.390	7356.51	4168.01	4172.61	752.14	40°06'51.991"N	104°44'20.310"W	0.72	
11867.00	90.120	359.600	7356.16	4253.00	4257.61	752.13	40°06'52.831"N	104°44'20.310"W	0.96	
11953.00	90.330	359.230	7355.83	4339.00	4343.60	751.25	40°06'53.681"N	104°44'20.321"W	0.49	
12038.00	89.320	358.530	7356.09	4423.99	4428.59	749.59	40°06'54.521"N	104°44'20.342"W	1.45	
12123.00	90.090	359.000	7356.52	4508.98	4513.56	747.76	40°06'55.360"N	104°44'20.366"W	1.06	
12209.00	90.520	358.910	7356.07	4594.97	4599.55	746.19	40°06'56.210"N	104°44'20.386"W	0.51	
12294.00	89.900	359.600	7355.75	4679.97	4684.54	745.09	40°06'57.050"N	104°44'20.400"W	1.09	
12379.00	89.380	0.040	7356.29	4764.97	4769.54	744.82	40°06'57.890"N	104°44'20.403"W	0.80	
12464.00	90.670	0.500	7356.25	4849.96	4854.53	745.22	40°06'58.730"N	104°44'20.398"W	1.61	
12549.00	90.300	0.670	7355.53	4934.95	4939.53	746.09	40°06'59.570"N	104°44'20.387"W	0.48	
12668.00	89.380	0.920	7355.86	5053.92	5058.51	747.74	40°07'00.746"N	104°44'20.366"W	0.80	Last BHI MWD+IFR Surveys
12726.00	89.380	0.920	7356.49	5111.90	5116.50	748.67	40°07'01.319"N	104°44'20.354"W	0.00	Projection to Bit

HOLE & CASING SECTIONS - Ref Wellbore: BADDING 27N-26HZ AWP Ref Wellpath: BADDING 27N-26HZ AWP

String/Diameter	Start MD [ft]	End MD [ft]	Interval [ft]	Start TVD [ft]	End TVD [ft]	Start N/S [ft]	Start E/W [ft]	End N/S [ft]	End E/W [ft]
13.5in Open Hole	17.00	1337.00	1320.00	17.00	1336.62	0.00	0.00	15.14	26.10
9.625in Casing Surface	17.00	1328.00	1311.00	17.00	1327.62	0.00	0.00	15.04	25.93
7in Casing Intermediate	17.00	7796.00	7779.00	17.00	7355.13	0.00	0.00	187.20	777.78
8.75in Open Hole	1337.00	7810.00	6473.00	1336.62	7355.52	15.14	26.10	201.19	778.16
6.125in Open Hole	7810.00	12726.00	4916.00	7355.52	7356.49	201.19	778.16	5116.50	748.67

Actual Wellpath Report

BADDING 27N-26HZ AWP

Page 6 of 7

REFERENCE WELLPATH IDENTIFICATION				
Operator	KERR-MCGEE OIL & GAS ONSHORE LP	Slot	SLOT#06 BADDING 27N-26HZ (350'FSL & 1901'FEL, SEC.26)	
Area	COLORADO	Well	BADDING 27N-26HZ	
Field	WELD COUNTY (KERR MCGEE)	Wellbore	BADDING 27N-26HZ AWB	
Facility	SEC.26-T2N-R66W			

TARGETS									
Name	MD [ft]	TVD [ft]	North [ft]	East [ft]	Grid East [US ft]	Grid North [US ft]	Latitude	Longitude	Shape
BADDING SECTION 26 LINES		-3.00	5.51	1197.02	3213324.01	1281285.67	40°06'10.811"N	104°44'14.586"W	polygon
BADDING SECTION 35 LINES		-3.00	5.51	1197.02	3213324.01	1281285.67	40°06'10.811"N	104°44'14.586"W	polygon
SHAHER USX W 35-6 (150' CIRCLE)		7331.00	-2116.40	-1749.73	3210395.64	1279138.73	40°05'49.842"N	104°44'52.506"W	circle
BADDING 27N-26HZ BHL ON PLAT (200'FSL & 1125'FEL, SEC.23) REV-1		7354.00	5119.07	745.08	3212828.38	1286394.96	40°07'01.344"N	104°44'20.400"W	point
BADDING 27N-26HZ LANDBOX		7354.00	0.00	0.00	3212127.14	1281269.92	40°06'10.757"N	104°44'29.990"W	polygon
SHAHER 31-35 (150' CIRCLE)		7361.00	-826.16	-410.56	3211723.68	1280440.32	40°06'02.593"N	104°44'35.274"W	circle
SHAHER USX W 35-7 (150' CIRCLE)		7400.00	-2102.17	106.57	3212251.68	1279168.83	40°05'49.983"N	104°44'28.619"W	circle
SHAHER 12-35 (150' CIRCLE)		7409.00	-2203.00	-2811.30	3209334.90	1279043.06	40°05'48.985"N	104°45'06.166"W	circle
BADDING USX W 35-3 (150' CIRCLE)		7418.00	-1161.58	-1530.03	3210607.16	1280095.35	40°05'59.277"N	104°44'49.679"W	circle
BADDING USX W 35-8 (150' CIRCLE)		7421.00	-2155.00	1163.12	3213308.59	1279125.04	40°05'49.460"N	104°44'15.023"W	circle
BADDING USX W 35-1 (150' CIRCLE)		7432.00	-1091.94	1146.40	3213282.79	1280187.87	40°05'59.966"N	104°44'15.238"W	circle

WELLPATH COMPOSITION - Ref Wellbore: BADDING 27N-26HZ AWB Ref Wellpath: BADDING 27N-26HZ AWP				
Start MD [ft]	End MD [ft]	Positional Uncertainty Model	Log Name/Comment	Wellbore
17.00	1171.00	Generic gyro - continuous (Standard)	MS ENERGY SERVICES GYRO SURVEYS <117-1171>	BADDING 27N-26HZ AWB
1171.00	7763.00	NaviTrak (MAGCORR,IFR)	BHI MWD+IFR SURVEYS 8 3/4" HOLE <1397-7763>	BADDING 27N-26HZ AWB
7763.00	12668.00	NaviTrak (MAGCORR,IFR)	BHI MWD+IFR SURVEYS 6 1/8" HOLE <7860-12668>	BADDING 27N-26HZ AWB
12668.00	12726.00	Blind Drilling (std)	Projection to bit	BADDING 27N-26HZ AWB

REFERENCE WELLPATH IDENTIFICATION			
Operator	KERR-MCGEE OIL & GAS ONSHORE LP	Slot	SLOT#06 BADDING 27N-26HZ (350'FSL & 1901'FEL, SEC.26)
Area	COLORADO	Well	BADDING 27N-26HZ
Field	WELD COUNTY (KERR MCGEE)	Wellbore	BADDING 27N-26HZ AWB
Facility	SEC.26-T2N-R66W		

WELLPATH COMMENTS				
MD [ft]	Inclination [°]	Azimuth [°]	TVD [ft]	Comment
17.00	0.000	67.960	17.00	Tie-On
117.00	0.440	67.960	117.00	Begin GYRO Surveys
1171.00	1.480	54.080	1170.66	Tie-Into GYRO Surveys
1397.00	1.120	63.000	1396.61	Begin BHI MWD+IFR Surveys
7796.00	88.153	1.525	7355.13	7" Casing Point
12668.00	89.380	0.920	7355.86	Last BHI MWD+IFR Surveys
12726.00	89.380	0.920	7356.49	Projection to Bit