

ATLAS RESOURCES, LLC

Date: 9/29/2011
Prepared by: Maddie Lariviere
Lease: STOUT
Well Number: 944-25-43
API: 05-095-06245-00
Location: NESE, Sec. 25 T9N-R44W
BHL:
Field: Amherst
Unit:
County: Phillips
State: Colorado

| WI | | SURVEYS: | |
|-------------|--|----------|------|
| NRI | | 470 | 0.28 |
| Surface fee | | 1000 | 0.46 |
| Mineral fee | | 1300 | 0.48 |
| | | 1800 | 0.93 |
| | | 2000 | 1.08 |
| | | 2600 | 0.95 |

Spud Date: 9/29/2011
TD Date: 10/3/2011
Completion date: N/A
First gas sales: N/A

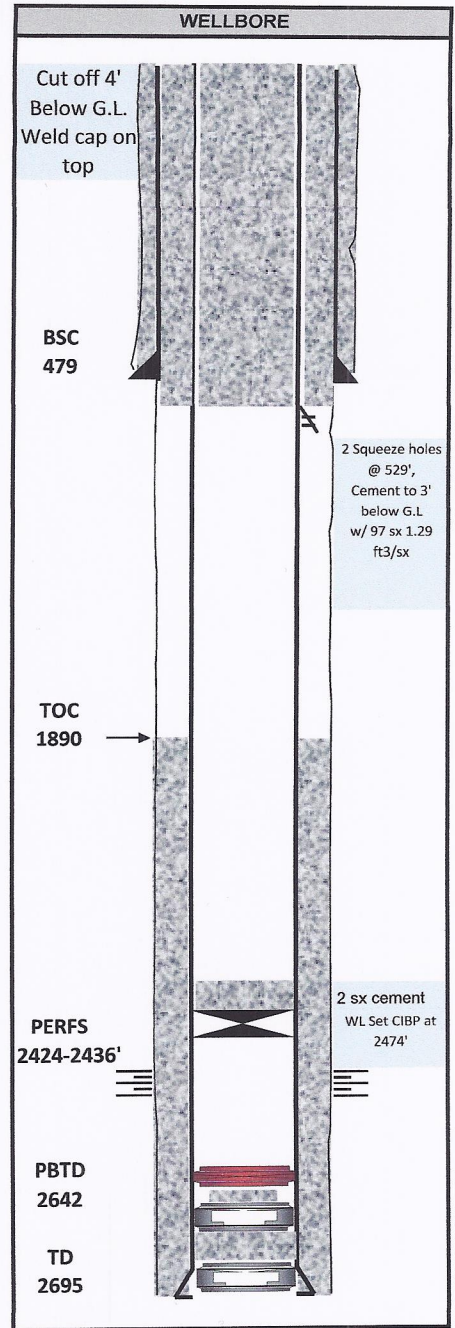
A-sect: Wellhead Inc LM-70 7" x 4-1/2", 1500psi, screw on
B-sect: R&M LM-45 4-1/2" x 2-3/8", 1500 psi, screw or

| KB | TVD | Subsea |
|------------------------|------|--------|
| GL | 3702 | 3690 |
| Geological tops | | |
| Pierre Shale | 390 | 3312 |
| Sharron Springs | 2374 | 1328 |
| Niobrara Chalk | 2428 | 1274 |
| TD | 2695 | 1007 |

Completion
Perforations

3 1/8" casing gun, 19 gram charges, 6 spf, 60 degree phasing, perforate from 2424-2436

Stimulation



| Well Profile Interval | Hole Size | Casing | Drift ID | Cement Top | Cement Base | Cement Description |
|-----------------------|-----------|---------------------------|----------|------------|-------------|--|
| G.L. - 479.18' | 9-7/8" | 7" 17# J-55 STC LS | 6.25 | 0 | 479 | 114 sx Portland cement, circ 5 bbls to pit |
| 479.18' - 2682' | 6-1/4" | 4-1/2" 10.50# J-55 STC LS | 3.927 | 1890 | 2695 | 80 sx Type 1 neat cement |