



RADIAL CEMENT BOND LOG
GAMMA RAY
CCL

Company KERR MCGEE OIL AND GAS ONSHORE
Well VOGL 23-36
Field WATTENBERG
County WELD
State COLORADO

Company KERR MCGEE OIL AND GAS ONSHORE
Well VOGL 23-36
Field WATTENBERG
County WELD State COLORADO

Location: API # : 05-123-31106
SW SW
SEC 36 TWP 3N RGE 68W
Permanent Datum G.L. 4817
Log Measured From KB 15 Elevation
Drilling Measured From K.B
Other Services
KB. 4832
D.F. 4831
G.L. 4817

Date	03-18-2014
Run Number	ONE
Depth Driller	8230
Depth Logger	1400
Bottom Logged Interval	1400
Top Log Interval	SURFACE
Open Hole Size	8.875
Type Fluid	WATER
Density / Viscosity	1.0
Max. Recorded Temp.	
Estimated Cement Top	800
Time Well Ready	
Time Logger on Bottom	
Equipment Number	4740
Location	GREELEY, CO
Recorded By	J.J.BULLARD
Witnessed By	D.POWELL

Borehole Record				Tubing Record			
Run Number	Bit	From	To	Size	Weight	From	To
ONE	12.25	0	730				
TWO	8.875	730	8230				
Casing Record	Size		Wgt/Ft	Top		Bottom	
Surface String	8.63		24	0		730	
Prot. String							
Production String	4.5		11.6	0		T.D.	
Liner							

<<< Fold Here >>>

All interpretations are opinions based on inferences from electrical or other measurements and we cannot and do not guarantee the accuracy or correctness of any interpretation, and we shall not, except in the case of gross or willful negligence on our part, be liable or responsible for any loss, costs, damages, or expenses incurred or sustained by anyone resulting from any interpretation made by any of our officers, agents or employees. These interpretations are also subject to our general terms and conditions set out in our current Price Schedule.

Comments

LOGGED TO VERIFY CEMENT BOND
THANK YOU FOR USING WARRIOR ENERGY SERVICES!!!

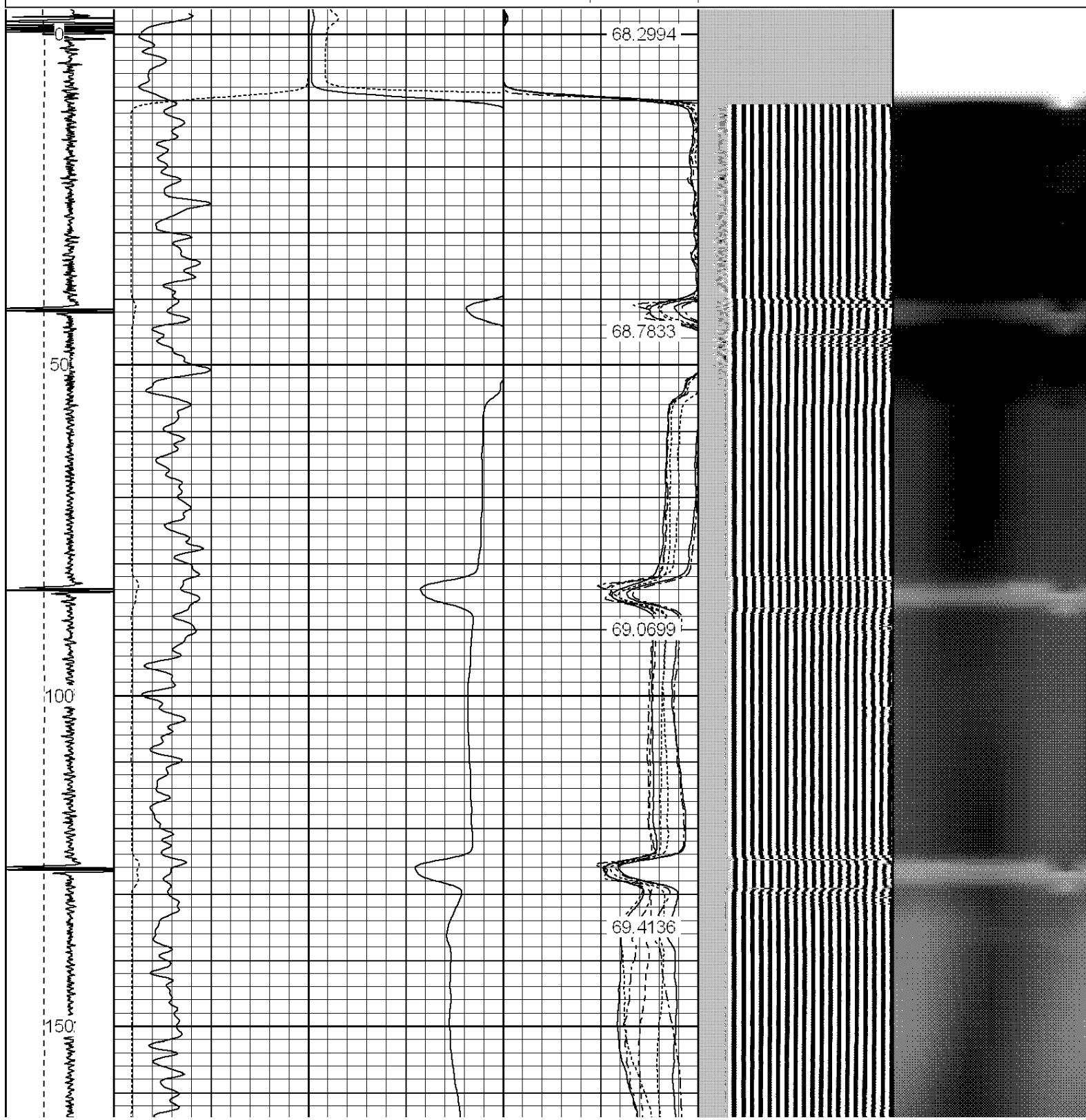
Sensor	Offset (ft)	Schematic	Description	Len (ft)	OD (in)	Wt (lb)

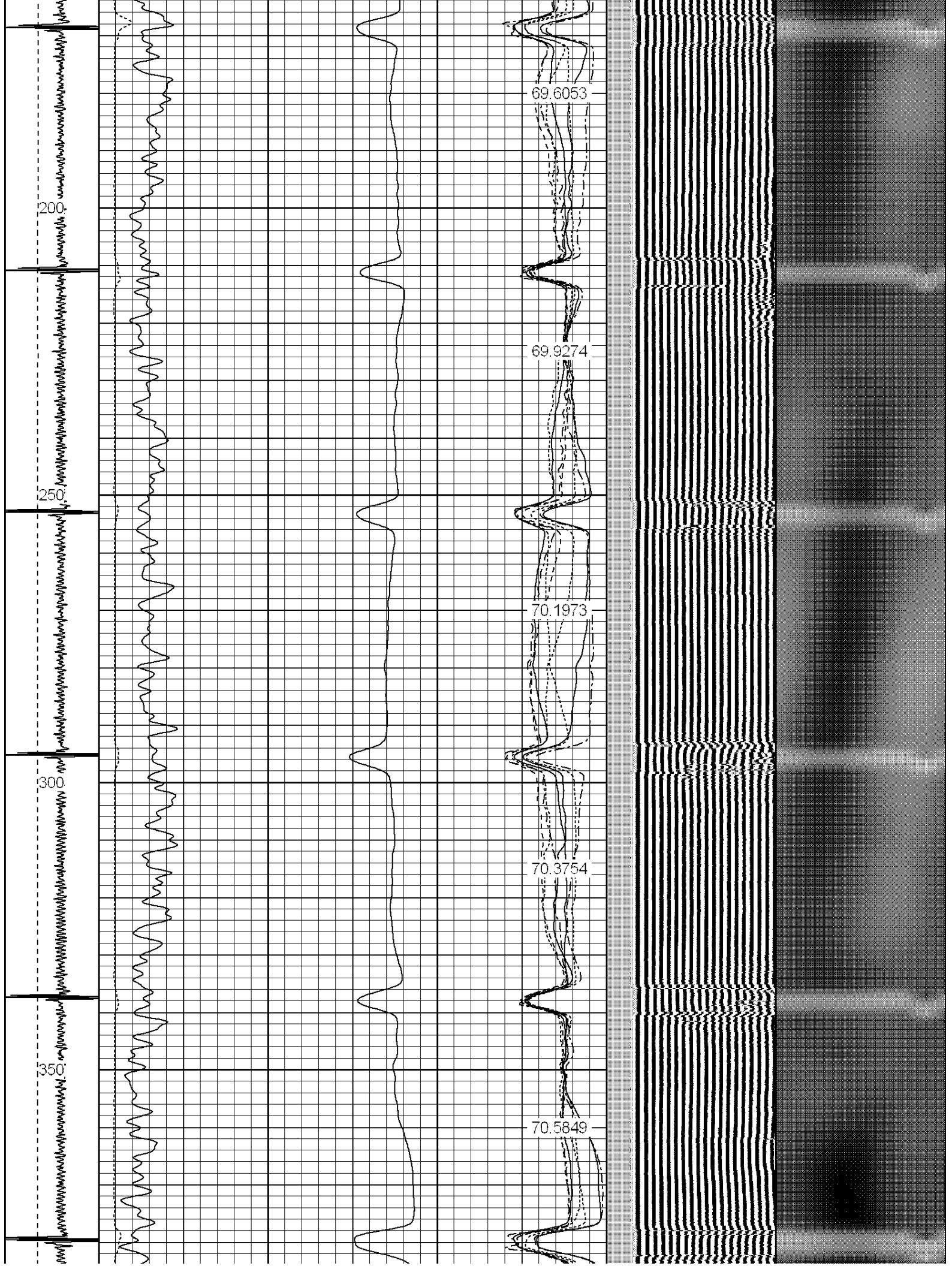
Tool Joint	Length (ft)	Weight (lb)	O.D. (in)	Notes
HEADVOLT	16.25			
IntTemp	14.83			
WVFS3FT	11.58			
WVFCAL	11.58			
WVFS1	11.58			
WVFS2	11.58			
WVFS3	11.58			
WVFS4	11.58			
WVFS5	11.58			
WVFS6	11.58			
WVFS7	11.58			
WVFS8	11.58			
WVFS5FT	10.58			
CNLSC	6.00			
CNSSC	5.17			
CCL	3.64			
GR	0.90			
PTS275	2.83	2.75		
RBT-Probe (Base)	8.92	2.75	90.00	Probe Radii Bond Tool with Digital Telemetry
CNT-Probe_B (275)	3.00	2.75	40.00	6 bow centralizer
GR-Probe (275)	4.33	2.75	30.00	Probe 2.75"

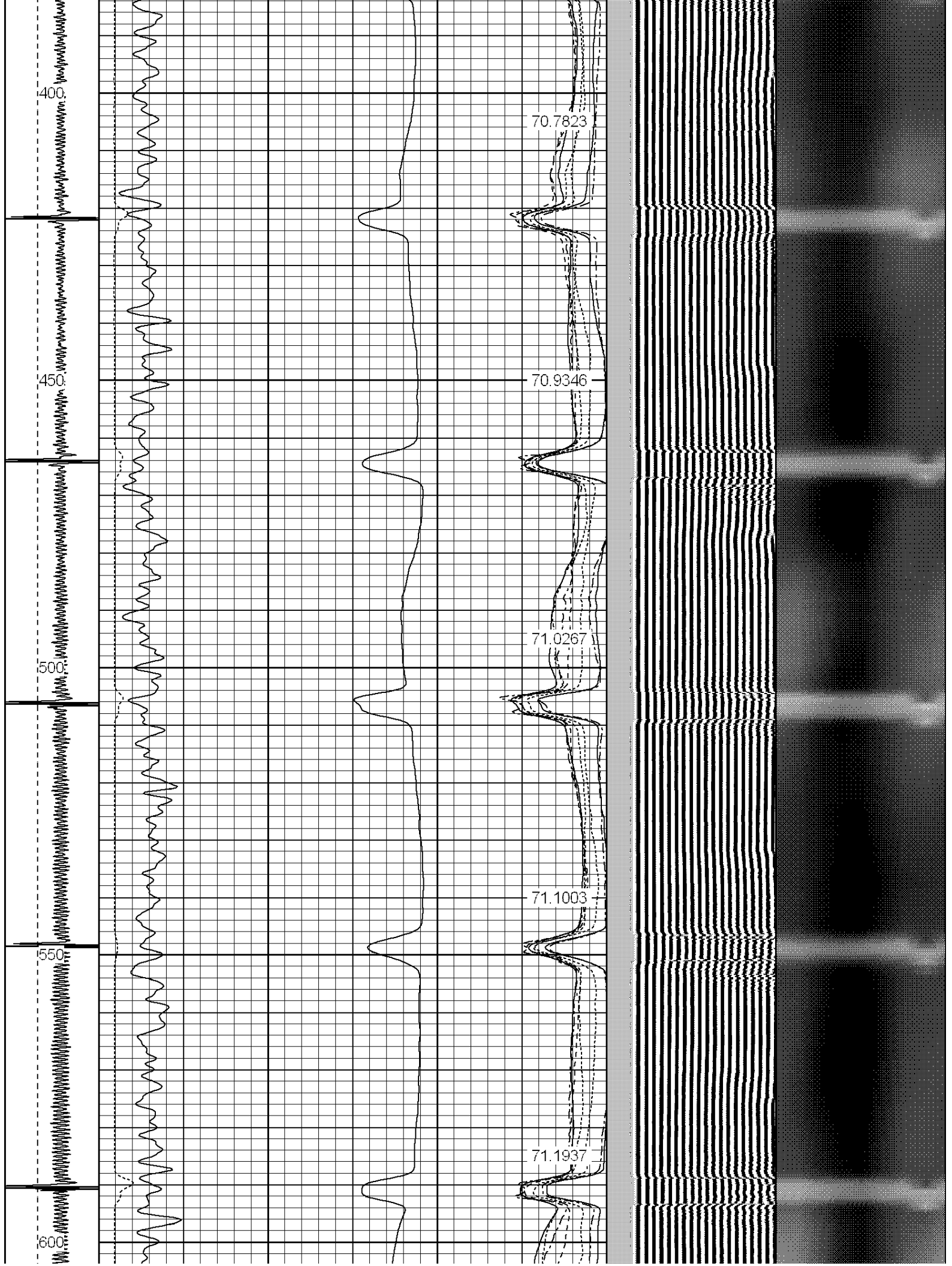
Dataset:
Total Length:
Total Weight:
O.D.

vogl 23-36.db: field/well/run1/pass3
19.08 ft
160.00 lb
2.75 in

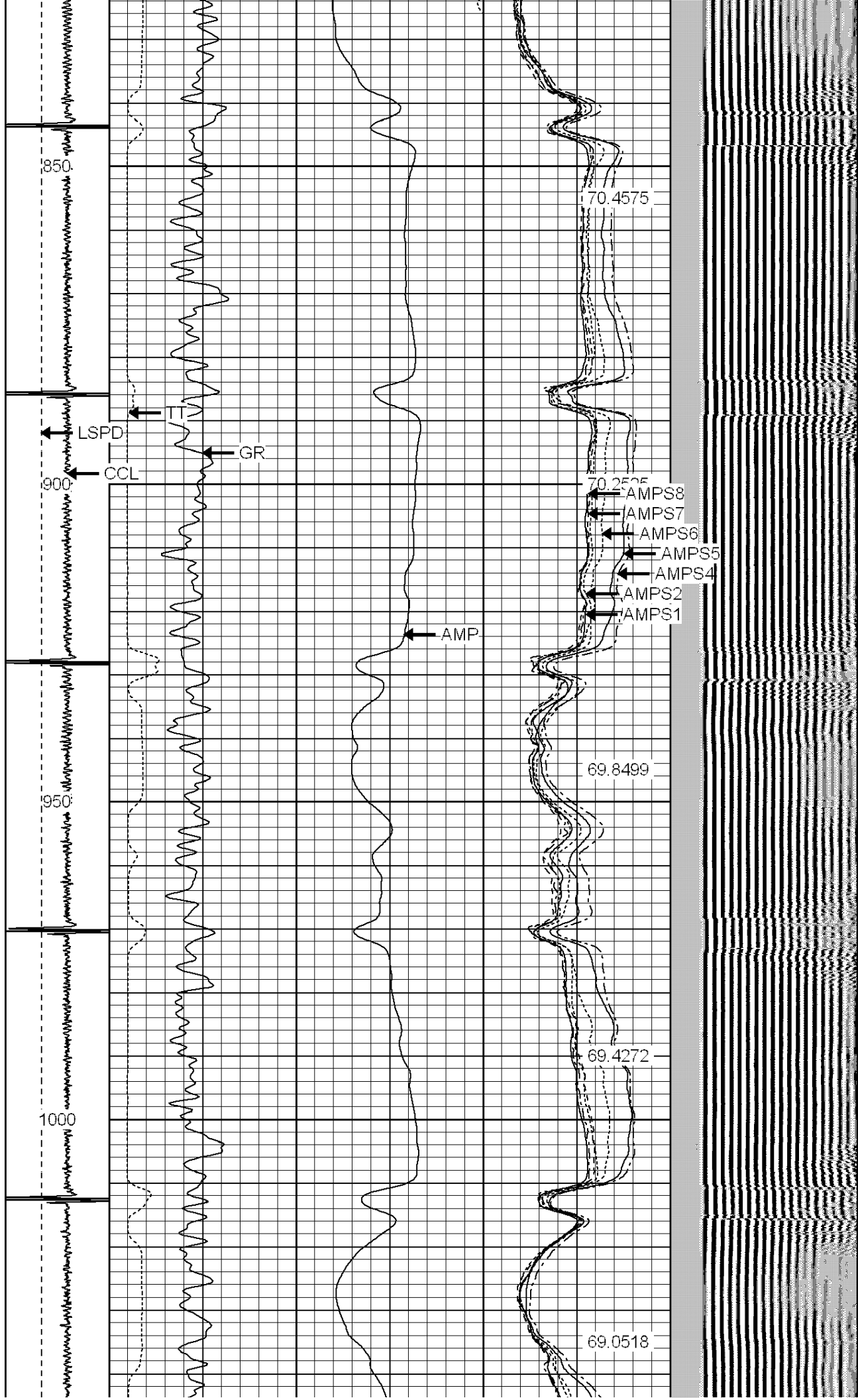
-9	CCL	6	200	TT (usec)	800	0	AMP (mV)	100	0	AMPS1	100	200	VDL	1200	1	Cement Map	8
LSPD			0	GR (GAPI)	200	0	AMPx5 (mV)	20	0	AMPS2	100				1		100
(ft/min)			200	GR (GAPI)	400				0	AMPS4	100						
0		250							0	AMPS5	100						
									0	AMPS6	100						
									0	AMPS7	100						
									0	AMPS8	100						
										IntTemp							
										(degF)							



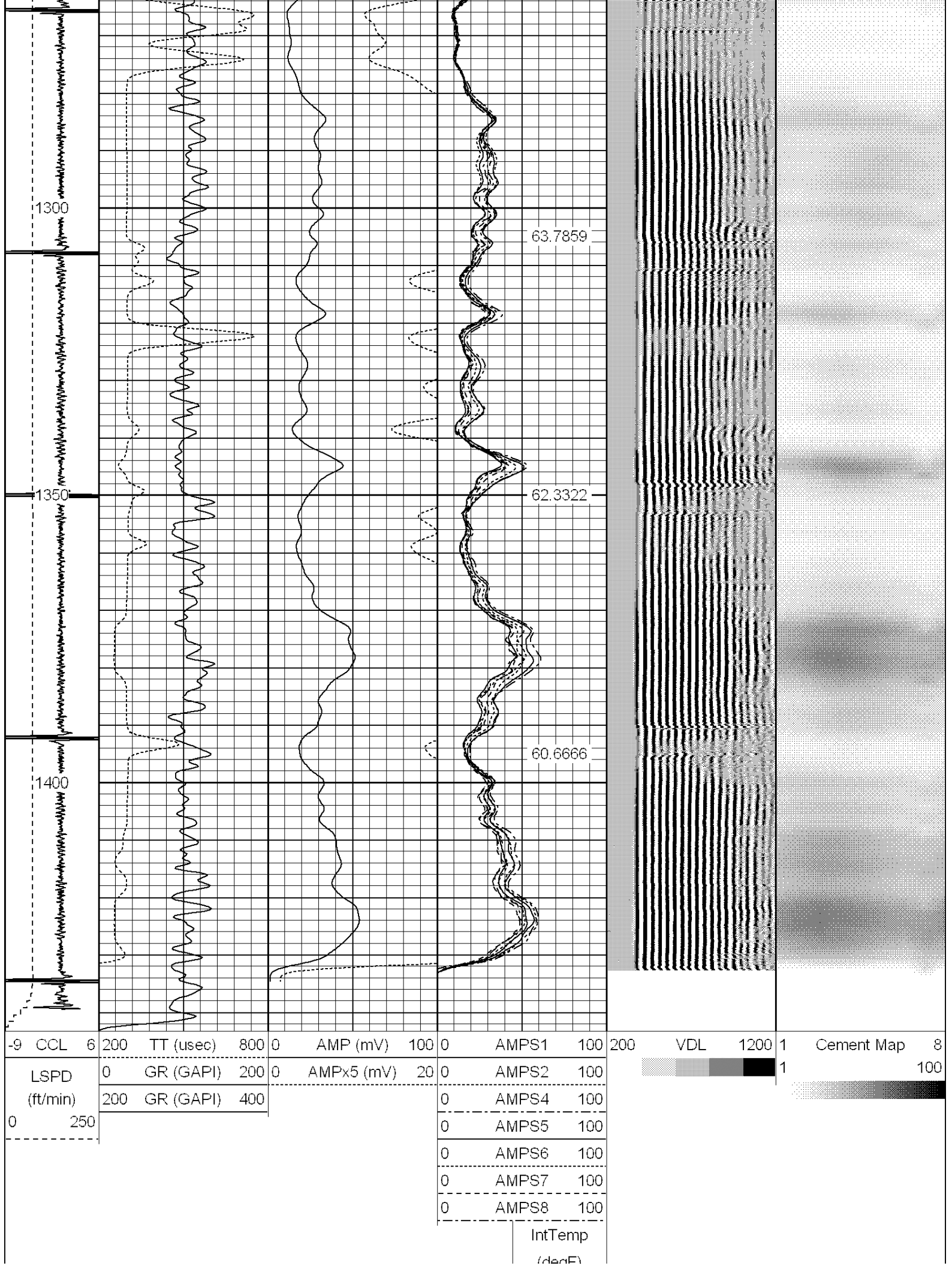


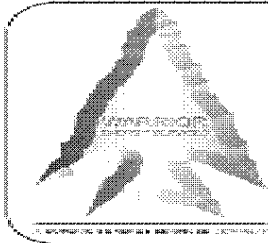












WARRIOR
ENERGY SERVICES

Company KERR MCGEE OIL AND GAS ONSHORE

Well VOGL 23-36

Field WATTENBERG

County WELD

State COLORADO