

Great Western

Well Name: **Kodak North FD 27-179HC**

Surface Location: Kodak North Pad Sec.26-T6N-R67W
 North American Datum 1983, US State Plane 1983, Colorado Northern Zone

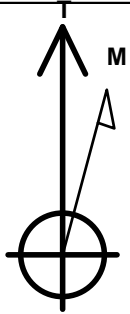
Ground Elevation: 4760.1

+N/-S	+E/-W	Northing	Easting	Latitude	Longitude	Slot
0.0	0.0	1410593.92	3177176.28	40.458736	-104.863286	

RKB - 16.5' WELL @ 4776.6ft (RKB - 16.5')

WELLBORE TARGET DETAILS

Name	TVD	+N/-S	+E/-W	Shape
SHL 2352'FNL & 1969'FWL, Sec.26	1.0	0.0	0.0	Point
BHL 2342'FNL & 470'FWL, Sec.27	7115.6	1.0	-6724.4	Point
Entry Pt. 2392'FNL & 1825'FWL, Sec.26	7115.6	-38.7	-143.9	Point



Azimuths to True North
 Magnetic North: 8.69°

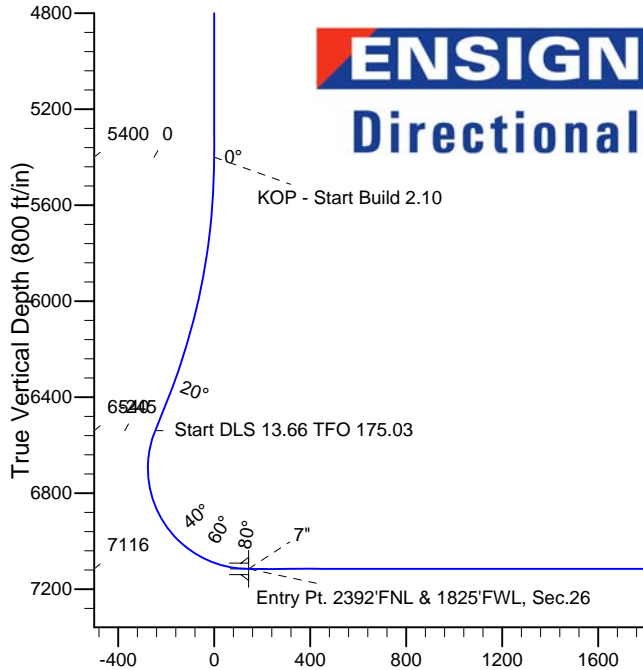
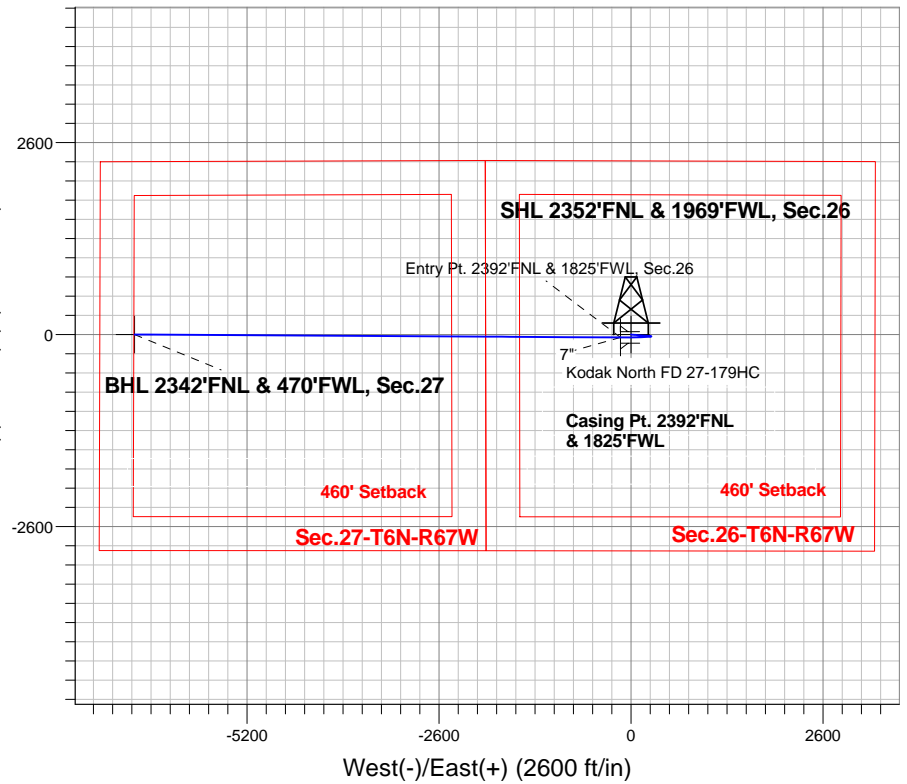
Magnetic Field
 Strength: 52895.5nT
 Dip Angle: 67.00°
 Date: 11/21/2013
 Model: IGRF2010

Kodak North Pad Sec.26-T6N-R67W
 Kodak North FD 27-179HC
 Plan #1 (11-21-13)
 13:20, November 22 2013

ANNOTATIONS

TVD	MD	Annotation
5400.0	5400.0	KOP - Start Build 2.10
6539.8	6574.6	Start DLS 13.66 TFO 175.03
7115.6	13974.7	TD at 13974.7

South(-)/North(+) (2600 ft/in)



SECTION DETAILS

Sec	MD	Inc	Azi	TVD	+N/-S	+E/-W	DLeg	TFace	VSec	Target
1	0.0	0.00	0.00	0.0	0.0	0.0	0.00	0.00	0.0	
2	5400.0	0.00	0.00	5400.0	0.0	0.0	0.00	0.00	0.0	
3	6446.6	21.98	94.53	6421.1	-15.7	197.7	2.10	94.53	-197.7	
4	6574.6	21.98	94.53	6539.8	-19.5	245.4	0.00	0.00	-245.4	
5	7394.1	90.00	269.92	7115.6	-38.7	-143.9	13.66	175.03	143.9	Entry Pt. 2392'FNL & 1825'FWL, Sec.26
6	7436.7	90.00	270.35	7115.6	-38.6	-186.5	1.00	90.00	186.5	
7	13974.7	90.00	270.35	7115.6	1.0	-6724.4	0.00	0.00	6724.4	BHL 2342'FNL & 470'FWL, Sec.27

BHL 2342'FNL & 470'FWL, Sec.27

Vertical Section at 270.01° (800 ft/in)

TD at 13974.7



Great Western

SEC.26-T6N-R67W

Kodak North Pad Sec.26-T6N-R67W

Kodak North FD 27-179HC

Wellbore #1

Plan: Plan #1 (11-21-13)

Standard Planning Report

22 November, 2013

Database:	Landmark	Local Co-ordinate Reference:	Well Kodak North FD 27-179HC
Company:	Great Western	TVD Reference:	WELL @ 4776.6ft (RKB - 16.5')
Project:	SEC.26-T6N-R67W	MD Reference:	WELL @ 4776.6ft (RKB - 16.5')
Site:	Kodak North Pad Sec.26-T6N-R67W	North Reference:	True
Well:	Kodak North FD 27-179HC	Survey Calculation Method:	Minimum Curvature
Wellbore:	Wellbore #1		
Design:	Plan #1 (11-21-13)		

Project	SEC.26-T6N-R67W, Weld County, Colorado		
Map System:	US State Plane 1983	System Datum:	Mean Sea Level
Geo Datum:	North American Datum 1983		Using Well Reference Point
Map Zone:	Colorado Northern Zone		Using geodetic scale factor

Site	Kodak North Pad Sec.26-T6N-R67W				
Site Position:		Northing:	1,410,693.08 ft	Latitude:	40.459011
From:	Lat/Long	Easting:	3,177,026.41 ft	Longitude:	-104.863822
Position Uncertainty:	0.0 ft	Slot Radius:	"	Grid Convergence:	0.41 °

Well	Kodak North FD 27-179HC					
Well Position	+N/-S	-100.2 ft	Northing:	1,410,593.92 ft	Latitude:	40.458736
	+E/-W	149.2 ft	Easting:	3,177,176.28 ft	Longitude:	-104.863286
Position Uncertainty		0.0 ft	Wellhead Elevation:	ft	Ground Level:	4,760.1 ft

Wellbore	Wellbore #1				
Magnetics	Model Name	Sample Date	Declination (°)	Dip Angle (°)	Field Strength (nT)
	IGRF2010	11/21/2013	8.59	67.00	52,895

Design	Plan #1 (11-21-13)			
Audit Notes:				
Version:	Phase:	PROTOTYPE	Tie On Depth:	0.0
Vertical Section:	Depth From (TVD) (ft)	+N/-S (ft)	+E/-W (ft)	Direction (°)
	0.0	0.0	0.0	270.01

Plan Sections										
Measured Depth (ft)	Inclination (°)	Azimuth (°)	Vertical Depth (ft)	+N/-S (ft)	+E/-W (ft)	Dogleg Rate (°/100ft)	Build Rate (°/100ft)	Turn Rate (°/100ft)	TFO (°)	Target
0.0	0.00	0.00	0.0	0.0	0.0	0.00	0.00	0.00	0.00	
5,400.0	0.00	0.00	5,400.0	0.0	0.0	0.00	0.00	0.00	0.00	
6,446.6	21.98	94.53	6,421.1	-15.7	197.7	2.10	2.10	0.00	94.53	
6,574.6	21.98	94.53	6,539.8	-19.5	245.4	0.00	0.00	0.00	0.00	
7,394.1	90.00	269.92	7,115.6	-38.7	-143.9	13.66	8.30	21.40	175.03	Entry Pt. 2392'FNL
7,436.7	90.00	270.35	7,115.6	-38.6	-186.5	1.00	0.00	1.00	90.00	
13,974.7	90.00	270.35	7,115.6	1.0	-6,724.4	0.00	0.00	0.00	0.00	BHL 2342'FNL & 47

Database:	Landmark	Local Co-ordinate Reference:	Well Kodak North FD 27-179HC
Company:	Great Western	TVD Reference:	WELL @ 4776.6ft (RKB - 16.5')
Project:	SEC.26-T6N-R67W	MD Reference:	WELL @ 4776.6ft (RKB - 16.5')
Site:	Kodak North Pad Sec.26-T6N-R67W	North Reference:	True
Well:	Kodak North FD 27-179HC	Survey Calculation Method:	Minimum Curvature
Wellbore:	Wellbore #1		
Design:	Plan #1 (11-21-13)		

Planned Survey										
Measured Depth (ft)	Inclination (°)	Azimuth (°)	Vertical Depth (ft)	+N-S (ft)	+E-W (ft)	Vertical Section (ft)	Dogleg Rate (°/100ft)	Build Rate (°/100ft)	Turn Rate (°/100ft)	
0.0	0.00	0.00	0.0	0.0	0.0	0.0	0.00	0.00	0.00	
1.0	0.00	0.00	1.0	0.0	0.0	0.0	0.00	0.00	0.00	
SHL 2352'FNL & 1969'FWL, Sec.26										
100.0	0.00	0.00	100.0	0.0	0.0	0.0	0.00	0.00	0.00	
200.0	0.00	0.00	200.0	0.0	0.0	0.0	0.00	0.00	0.00	
300.0	0.00	0.00	300.0	0.0	0.0	0.0	0.00	0.00	0.00	
400.0	0.00	0.00	400.0	0.0	0.0	0.0	0.00	0.00	0.00	
500.0	0.00	0.00	500.0	0.0	0.0	0.0	0.00	0.00	0.00	
600.0	0.00	0.00	600.0	0.0	0.0	0.0	0.00	0.00	0.00	
700.0	0.00	0.00	700.0	0.0	0.0	0.0	0.00	0.00	0.00	
800.0	0.00	0.00	800.0	0.0	0.0	0.0	0.00	0.00	0.00	
900.0	0.00	0.00	900.0	0.0	0.0	0.0	0.00	0.00	0.00	
1,000.0	0.00	0.00	1,000.0	0.0	0.0	0.0	0.00	0.00	0.00	
1,100.0	0.00	0.00	1,100.0	0.0	0.0	0.0	0.00	0.00	0.00	
1,200.0	0.00	0.00	1,200.0	0.0	0.0	0.0	0.00	0.00	0.00	
1,300.0	0.00	0.00	1,300.0	0.0	0.0	0.0	0.00	0.00	0.00	
1,400.0	0.00	0.00	1,400.0	0.0	0.0	0.0	0.00	0.00	0.00	
1,500.0	0.00	0.00	1,500.0	0.0	0.0	0.0	0.00	0.00	0.00	
1,600.0	0.00	0.00	1,600.0	0.0	0.0	0.0	0.00	0.00	0.00	
1,700.0	0.00	0.00	1,700.0	0.0	0.0	0.0	0.00	0.00	0.00	
1,800.0	0.00	0.00	1,800.0	0.0	0.0	0.0	0.00	0.00	0.00	
1,900.0	0.00	0.00	1,900.0	0.0	0.0	0.0	0.00	0.00	0.00	
2,000.0	0.00	0.00	2,000.0	0.0	0.0	0.0	0.00	0.00	0.00	
2,100.0	0.00	0.00	2,100.0	0.0	0.0	0.0	0.00	0.00	0.00	
2,200.0	0.00	0.00	2,200.0	0.0	0.0	0.0	0.00	0.00	0.00	
2,300.0	0.00	0.00	2,300.0	0.0	0.0	0.0	0.00	0.00	0.00	
2,400.0	0.00	0.00	2,400.0	0.0	0.0	0.0	0.00	0.00	0.00	
2,500.0	0.00	0.00	2,500.0	0.0	0.0	0.0	0.00	0.00	0.00	
2,600.0	0.00	0.00	2,600.0	0.0	0.0	0.0	0.00	0.00	0.00	
2,700.0	0.00	0.00	2,700.0	0.0	0.0	0.0	0.00	0.00	0.00	
2,800.0	0.00	0.00	2,800.0	0.0	0.0	0.0	0.00	0.00	0.00	
2,900.0	0.00	0.00	2,900.0	0.0	0.0	0.0	0.00	0.00	0.00	
3,000.0	0.00	0.00	3,000.0	0.0	0.0	0.0	0.00	0.00	0.00	
3,100.0	0.00	0.00	3,100.0	0.0	0.0	0.0	0.00	0.00	0.00	
3,200.0	0.00	0.00	3,200.0	0.0	0.0	0.0	0.00	0.00	0.00	
3,300.0	0.00	0.00	3,300.0	0.0	0.0	0.0	0.00	0.00	0.00	
3,400.0	0.00	0.00	3,400.0	0.0	0.0	0.0	0.00	0.00	0.00	
3,500.0	0.00	0.00	3,500.0	0.0	0.0	0.0	0.00	0.00	0.00	
3,600.0	0.00	0.00	3,600.0	0.0	0.0	0.0	0.00	0.00	0.00	
3,700.0	0.00	0.00	3,700.0	0.0	0.0	0.0	0.00	0.00	0.00	
3,800.0	0.00	0.00	3,800.0	0.0	0.0	0.0	0.00	0.00	0.00	
3,900.0	0.00	0.00	3,900.0	0.0	0.0	0.0	0.00	0.00	0.00	
4,000.0	0.00	0.00	4,000.0	0.0	0.0	0.0	0.00	0.00	0.00	
4,100.0	0.00	0.00	4,100.0	0.0	0.0	0.0	0.00	0.00	0.00	
4,200.0	0.00	0.00	4,200.0	0.0	0.0	0.0	0.00	0.00	0.00	
4,300.0	0.00	0.00	4,300.0	0.0	0.0	0.0	0.00	0.00	0.00	
4,400.0	0.00	0.00	4,400.0	0.0	0.0	0.0	0.00	0.00	0.00	
4,500.0	0.00	0.00	4,500.0	0.0	0.0	0.0	0.00	0.00	0.00	
4,600.0	0.00	0.00	4,600.0	0.0	0.0	0.0	0.00	0.00	0.00	
4,700.0	0.00	0.00	4,700.0	0.0	0.0	0.0	0.00	0.00	0.00	
4,800.0	0.00	0.00	4,800.0	0.0	0.0	0.0	0.00	0.00	0.00	
4,900.0	0.00	0.00	4,900.0	0.0	0.0	0.0	0.00	0.00	0.00	
5,000.0	0.00	0.00	5,000.0	0.0	0.0	0.0	0.00	0.00	0.00	
5,100.0	0.00	0.00	5,100.0	0.0	0.0	0.0	0.00	0.00	0.00	

Database:	Landmark	Local Co-ordinate Reference:	Well Kodak North FD 27-179HC
Company:	Great Western	TVD Reference:	WELL @ 4776.6ft (RKB - 16.5')
Project:	SEC.26-T6N-R67W	MD Reference:	WELL @ 4776.6ft (RKB - 16.5')
Site:	Kodak North Pad Sec.26-T6N-R67W	North Reference:	True
Well:	Kodak North FD 27-179HC	Survey Calculation Method:	Minimum Curvature
Wellbore:	Wellbore #1		
Design:	Plan #1 (11-21-13)		

Planned Survey										
Measured Depth (ft)	Inclination (°)	Azimuth (°)	Vertical Depth (ft)	+N/-S (ft)	+E/-W (ft)	Vertical Section (ft)	Dogleg Rate (°/100ft)	Build Rate (°/100ft)	Turn Rate (°/100ft)	
5,200.0	0.00	0.00	5,200.0	0.0	0.0	0.0	0.00	0.00	0.00	0.00
5,300.0	0.00	0.00	5,300.0	0.0	0.0	0.0	0.00	0.00	0.00	0.00
5,400.0	0.00	0.00	5,400.0	0.0	0.0	0.0	0.00	0.00	0.00	0.00
KOP - Start Build 2.10										
5,500.0	2.10	94.53	5,500.0	-0.1	1.8	-1.8	2.10	2.10	0.00	0.00
5,600.0	4.20	94.53	5,599.8	-0.6	7.3	-7.3	2.10	2.10	0.00	0.00
5,700.0	6.30	94.53	5,699.4	-1.3	16.4	-16.4	2.10	2.10	0.00	0.00
5,800.0	8.40	94.53	5,798.6	-2.3	29.2	-29.2	2.10	2.10	0.00	0.00
5,900.0	10.50	94.53	5,897.2	-3.6	45.5	-45.5	2.10	2.10	0.00	0.00
6,000.0	12.60	94.53	5,995.2	-5.2	65.5	-65.5	2.10	2.10	0.00	0.00
6,100.0	14.70	94.53	6,092.3	-7.1	89.0	-89.0	2.10	2.10	0.00	0.00
6,200.0	16.80	94.53	6,188.6	-9.2	116.1	-116.1	2.10	2.10	0.00	0.00
6,300.0	18.90	94.53	6,283.8	-11.6	146.6	-146.6	2.10	2.10	0.00	0.00
6,400.0	21.00	94.53	6,377.8	-14.3	180.6	-180.7	2.10	2.10	0.00	0.00
6,446.6	21.98	94.53	6,421.1	-15.7	197.7	-197.7	2.10	2.10	0.00	0.00
6,500.0	21.98	94.53	6,470.6	-17.3	217.6	-217.6	0.00	0.00	0.00	0.00
6,574.6	21.98	94.53	6,539.8	-19.5	245.4	-245.4	0.00	0.00	0.00	0.00
Start DLS 13.66 TFO 175.03										
6,600.0	18.52	95.48	6,563.6	-20.2	254.2	-254.2	13.68	-13.62	3.73	
6,700.0	5.12	111.15	6,661.3	-23.4	274.2	-274.2	13.66	-13.40	15.67	
6,800.0	9.07	258.19	6,761.0	-26.6	270.7	-270.7	13.66	3.95	147.04	
6,900.0	22.61	265.45	6,857.0	-29.8	243.7	-243.7	13.66	13.54	7.26	
7,000.0	36.23	267.38	6,943.9	-32.7	194.8	-194.8	13.66	13.62	1.93	
7,100.0	49.87	268.35	7,016.8	-35.1	126.7	-126.7	13.66	13.64	0.97	
7,200.0	63.52	268.99	7,071.5	-37.0	43.3	-43.4	13.66	13.64	0.64	
7,300.0	77.16	269.50	7,105.1	-38.2	-50.6	50.6	13.66	13.65	0.50	
7,394.1	90.00	269.92	7,115.6	-38.7	-143.9	143.9	13.65	13.64	0.45	
7" - Entry Pt. 2392'FNL & 1825'FWL, Sec.26										
7,400.0	90.00	269.98	7,115.6	-38.7	-149.8	149.8	1.01	0.08	1.00	
7,436.7	90.00	270.35	7,115.6	-38.6	-186.5	186.5	1.00	0.00	1.00	
7,500.0	90.00	270.35	7,115.6	-38.2	-249.8	249.8	0.00	0.00	0.00	
7,600.0	90.00	270.35	7,115.6	-37.6	-349.8	349.8	0.00	0.00	0.00	
7,700.0	90.00	270.35	7,115.6	-37.0	-449.8	449.8	0.00	0.00	0.00	
7,800.0	90.00	270.35	7,115.6	-36.4	-549.8	549.8	0.00	0.00	0.00	
7,900.0	90.00	270.35	7,115.6	-35.8	-649.8	649.8	0.00	0.00	0.00	
8,000.0	90.00	270.35	7,115.6	-35.2	-749.8	749.8	0.00	0.00	0.00	
8,100.0	90.00	270.35	7,115.6	-34.6	-849.8	849.8	0.00	0.00	0.00	
8,200.0	90.00	270.35	7,115.6	-34.0	-949.8	949.8	0.00	0.00	0.00	
8,300.0	90.00	270.35	7,115.6	-33.4	-1,049.8	1,049.8	0.00	0.00	0.00	
8,400.0	90.00	270.35	7,115.6	-32.8	-1,149.8	1,149.8	0.00	0.00	0.00	
8,500.0	90.00	270.35	7,115.6	-32.2	-1,249.8	1,249.8	0.00	0.00	0.00	
8,600.0	90.00	270.35	7,115.6	-31.6	-1,349.8	1,349.8	0.00	0.00	0.00	
8,700.0	90.00	270.35	7,115.6	-31.0	-1,449.8	1,449.8	0.00	0.00	0.00	
8,800.0	90.00	270.35	7,115.6	-30.4	-1,549.8	1,549.8	0.00	0.00	0.00	
8,900.0	90.00	270.35	7,115.6	-29.7	-1,649.8	1,649.8	0.00	0.00	0.00	
9,000.0	90.00	270.35	7,115.6	-29.1	-1,749.8	1,749.8	0.00	0.00	0.00	
9,100.0	90.00	270.35	7,115.6	-28.5	-1,849.8	1,849.8	0.00	0.00	0.00	
9,200.0	90.00	270.35	7,115.6	-27.9	-1,949.8	1,949.8	0.00	0.00	0.00	
9,300.0	90.00	270.35	7,115.6	-27.3	-2,049.8	2,049.8	0.00	0.00	0.00	
9,400.0	90.00	270.35	7,115.6	-26.7	-2,149.8	2,149.8	0.00	0.00	0.00	
9,500.0	90.00	270.35	7,115.6	-26.1	-2,249.8	2,249.8	0.00	0.00	0.00	
9,600.0	90.00	270.35	7,115.6	-25.5	-2,349.8	2,349.8	0.00	0.00	0.00	
9,700.0	90.00	270.35	7,115.6	-24.9	-2,449.8	2,449.8	0.00	0.00	0.00	

Database:	Landmark	Local Co-ordinate Reference:	Well Kodak North FD 27-179HC
Company:	Great Western	TVD Reference:	WELL @ 4776.6ft (RKB - 16.5')
Project:	SEC.26-T6N-R67W	MD Reference:	WELL @ 4776.6ft (RKB - 16.5')
Site:	Kodak North Pad Sec.26-T6N-R67W	North Reference:	True
Well:	Kodak North FD 27-179HC	Survey Calculation Method:	Minimum Curvature
Wellbore:	Wellbore #1		
Design:	Plan #1 (11-21-13)		

Planned Survey										
Measured Depth (ft)	Inclination (°)	Azimuth (°)	Vertical Depth (ft)	+N/-S (ft)	+E/-W (ft)	Vertical Section (ft)	Dogleg Rate (°/100ft)	Build Rate (°/100ft)	Turn Rate (°/100ft)	
9,800.0	90.00	270.35	7,115.6	-24.3	-2,549.8	2,549.8	0.00	0.00	0.00	
9,900.0	90.00	270.35	7,115.6	-23.7	-2,649.8	2,649.8	0.00	0.00	0.00	
10,000.0	90.00	270.35	7,115.6	-23.1	-2,749.8	2,749.8	0.00	0.00	0.00	
10,100.0	90.00	270.35	7,115.6	-22.5	-2,849.8	2,849.8	0.00	0.00	0.00	
10,200.0	90.00	270.35	7,115.6	-21.9	-2,949.8	2,949.8	0.00	0.00	0.00	
10,300.0	90.00	270.35	7,115.6	-21.3	-3,049.8	3,049.8	0.00	0.00	0.00	
10,400.0	90.00	270.35	7,115.6	-20.7	-3,149.8	3,149.7	0.00	0.00	0.00	
10,500.0	90.00	270.35	7,115.6	-20.1	-3,249.8	3,249.7	0.00	0.00	0.00	
10,600.0	90.00	270.35	7,115.6	-19.5	-3,349.7	3,349.7	0.00	0.00	0.00	
10,700.0	90.00	270.35	7,115.6	-18.9	-3,449.7	3,449.7	0.00	0.00	0.00	
10,800.0	90.00	270.35	7,115.6	-18.2	-3,549.7	3,549.7	0.00	0.00	0.00	
10,900.0	90.00	270.35	7,115.6	-17.6	-3,649.7	3,649.7	0.00	0.00	0.00	
11,000.0	90.00	270.35	7,115.6	-17.0	-3,749.7	3,749.7	0.00	0.00	0.00	
11,100.0	90.00	270.35	7,115.6	-16.4	-3,849.7	3,849.7	0.00	0.00	0.00	
11,200.0	90.00	270.35	7,115.6	-15.8	-3,949.7	3,949.7	0.00	0.00	0.00	
11,300.0	90.00	270.35	7,115.6	-15.2	-4,049.7	4,049.7	0.00	0.00	0.00	
11,400.0	90.00	270.35	7,115.6	-14.6	-4,149.7	4,149.7	0.00	0.00	0.00	
11,500.0	90.00	270.35	7,115.6	-14.0	-4,249.7	4,249.7	0.00	0.00	0.00	
11,600.0	90.00	270.35	7,115.6	-13.4	-4,349.7	4,349.7	0.00	0.00	0.00	
11,700.0	90.00	270.35	7,115.6	-12.8	-4,449.7	4,449.7	0.00	0.00	0.00	
11,800.0	90.00	270.35	7,115.6	-12.2	-4,549.7	4,549.7	0.00	0.00	0.00	
11,900.0	90.00	270.35	7,115.6	-11.6	-4,649.7	4,649.7	0.00	0.00	0.00	
12,000.0	90.00	270.35	7,115.6	-11.0	-4,749.7	4,749.7	0.00	0.00	0.00	
12,100.0	90.00	270.35	7,115.6	-10.4	-4,849.7	4,849.7	0.00	0.00	0.00	
12,200.0	90.00	270.35	7,115.6	-9.8	-4,949.7	4,949.7	0.00	0.00	0.00	
12,300.0	90.00	270.35	7,115.6	-9.2	-5,049.7	5,049.7	0.00	0.00	0.00	
12,400.0	90.00	270.35	7,115.6	-8.6	-5,149.7	5,149.7	0.00	0.00	0.00	
12,500.0	90.00	270.35	7,115.6	-8.0	-5,249.7	5,249.7	0.00	0.00	0.00	
12,600.0	90.00	270.35	7,115.6	-7.4	-5,349.7	5,349.7	0.00	0.00	0.00	
12,700.0	90.00	270.35	7,115.6	-6.8	-5,449.7	5,449.7	0.00	0.00	0.00	
12,800.0	90.00	270.35	7,115.6	-6.1	-5,549.7	5,549.7	0.00	0.00	0.00	
12,900.0	90.00	270.35	7,115.6	-5.5	-5,649.7	5,649.7	0.00	0.00	0.00	
13,000.0	90.00	270.35	7,115.6	-4.9	-5,749.7	5,749.7	0.00	0.00	0.00	
13,100.0	90.00	270.35	7,115.6	-4.3	-5,849.7	5,849.7	0.00	0.00	0.00	
13,200.0	90.00	270.35	7,115.6	-3.7	-5,949.7	5,949.7	0.00	0.00	0.00	
13,300.0	90.00	270.35	7,115.6	-3.1	-6,049.7	6,049.7	0.00	0.00	0.00	
13,400.0	90.00	270.35	7,115.6	-2.5	-6,149.7	6,149.7	0.00	0.00	0.00	
13,500.0	90.00	270.35	7,115.6	-1.9	-6,249.7	6,249.7	0.00	0.00	0.00	
13,600.0	90.00	270.35	7,115.6	-1.3	-6,349.7	6,349.7	0.00	0.00	0.00	
13,700.0	90.00	270.35	7,115.6	-0.7	-6,449.7	6,449.7	0.00	0.00	0.00	
13,800.0	90.00	270.35	7,115.6	-0.1	-6,549.7	6,549.7	0.00	0.00	0.00	
13,900.0	90.00	270.35	7,115.6	0.5	-6,649.7	6,649.7	0.00	0.00	0.00	
13,974.7	90.00	270.35	7,115.6	1.0	-6,724.4	6,724.4	0.00	0.00	0.00	
BHL 2342'FNL & 470'FWL, Sec.27										

Database:	Landmark	Local Co-ordinate Reference:	Well Kodak North FD 27-179HC
Company:	Great Western	TVD Reference:	WELL @ 4776.6ft (RKB - 16.5')
Project:	SEC.26-T6N-R67W	MD Reference:	WELL @ 4776.6ft (RKB - 16.5')
Site:	Kodak North Pad Sec.26-T6N-R67W	North Reference:	True
Well:	Kodak North FD 27-179HC	Survey Calculation Method:	Minimum Curvature
Wellbore:	Wellbore #1		
Design:	Plan #1 (11-21-13)		

Targets									
Target Name	Dip Angle (°)	Dip Dir. (°)	TVD (ft)	+N/-S (ft)	+E/-W (ft)	Northing (ft)	Easting (ft)	Latitude	Longitude
BHL 2342'FNL & 470' - plan hits target center - Point	0.00	0.00	7,115.6	1.0	-6,724.4	1,410,546.60	3,170,452.35	40.458736	-104.887450
SHL 2352'FNL & 196' - plan hits target center - Point	0.00	0.00	1.0	0.0	0.0	1,410,593.97	3,177,176.28	40.458736	-104.863286
Entry Pt. 2392'FNL & 470' - plan hits target center - Point	0.00	0.00	7,115.6	-38.7	-143.9	1,410,554.19	3,177,032.70	40.458630	-104.863803

Casing Points					
Measured Depth (ft)	Vertical Depth (ft)	Name	Casing Diameter (")	Hole Diameter (")	
7,394.1	7,115.6	7"	7	7-1/2	

Plan Annotations				
Measured Depth (ft)	Vertical Depth (ft)	+N/-S (ft)	+E/-W (ft)	Comment
5,400.0	5,400.0	0.0	0.0	KOP - Start Build 2.10
6,574.6	6,539.8	-19.5	245.4	Start DLS 13.66 TFO 175.03
13,974.7	7,115.6	1.0	-6,724.4	TD at 13974.7



Directional

Great Western

SEC.26-T6N-R67W

Kodak North Pad Sec.26-T6N-R67W

Kodak North FD 27-179HC

Wellbore #1

Plan #1 (11-21-13)

Anticollision Report

22 November, 2013

Company:	Great Western	Local Co-ordinate Reference:	Well Kodak North FD 27-179HC
Project:	SEC.26-T6N-R67W	TVD Reference:	WELL @ 4776.6ft (RKB - 16.5')
Reference Site:	Kodak North Pad Sec.26-T6N-R67W	MD Reference:	WELL @ 4776.6ft (RKB - 16.5')
Site Error:	0.0ft	North Reference:	True
Reference Well:	Kodak North FD 27-179HC	Survey Calculation Method:	Minimum Curvature
Well Error:	0.0ft	Output errors are at	2.00 sigma
Reference Wellbore	Wellbore #1	Database:	Landmark
Reference Design:	Plan #1 (11-21-13)	Offset TVD Reference:	Offset Datum

Reference	Plan #1 (11-21-13)		
Filter type:	NO GLOBAL FILTER: Using user defined selection & filtering criteria		
Interpolation Method:	MD Interval 100.0ft	Error Model:	ISCWSA
Depth Range:	Unlimited	Scan Method:	Closest Approach 3D
Results Limited by:	Maximum center-center distance of 1,000.0ft	Error Surface:	Elliptical Conic
Warning Levels Evaluated at:	2.00 Sigma		

Survey Tool Program	Date	11/22/2013		
From (ft)	To (ft)	Survey (Wellbore)	Tool Name	Description
0.0	13,974.7	Plan #1 (11-21-13) (Wellbore #1)	MWD	MWD - Standard

Site Name	Reference Measured Depth (ft)	Offset Measured Depth (ft)	Distance Between Centres (ft)	Distance Between Ellipses (ft)	Separation Factor	Warning
Offset Well - Wellbore - Design						
Kodak North Pad Sec.26-T6N-R67W						
Kodak North FD 25-122HN - Wellbore #1 - Plan #1 (11-2	5,400.0	5,400.0	59.6	35.5	2.476	CC, ES, SF
Kodak North FD 25-162HN - Wellbore #1 - Plan #1 (11-2	5,200.0	5,200.0	89.6	66.5	3.871	CC
Kodak North FD 25-162HN - Wellbore #1 - Plan #1 (11-2	6,970.6	7,372.6	94.4	57.4	2.554	ES, SF
Kodak North FD 27-179HN - Wellbore #1 - Plan #1 (11-2	5,896.6	5,905.9	26.6	0.5	1.019	Level 2, CC
Kodak North FD 27-179HN - Wellbore #1 - Plan #1 (11-2	13,974.7	13,846.6	259.6	-23.9	0.916	Level 1, ES, SF
Kodak North FD 27-182HN - Wellbore #1 - Plan #1 (11-2	5,200.0	5,200.0	30.1	6.9	1.298	Level 3, CC, ES
Kodak North FD 27-182HN - Wellbore #1 - Plan #1 (11-2	13,974.7	13,825.5	350.4	16.2	1.048	Level 2, SF

Offset Design													Offset Site Error:	0.0 ft
Survey Program: 0-MWD													Offset Well Error:	0.0 ft
Reference Measured Depth (ft)	Vertical Depth (ft)	Measured Depth (ft)	Vertical Depth (ft)	Semi Major Axis Reference (ft)	Offset (ft)	Highside Toolface (°)	Offset Wellbore Centre +N/-S (ft)	+E/-W (ft)	Distance Between Centres (ft)	Distance Between Ellipses (ft)	Minimum Separation (ft)	Separation Factor	Warning	
0.0	0.0	0.0	0.0	0.0	0.0	-89.98	0.0	-59.6	59.6					
100.0	100.0	100.0	100.0	0.1	0.1	-89.98	0.0	-59.6	59.6	59.3	0.22	264.951		
200.0	200.0	200.0	200.0	0.3	0.3	-89.98	0.0	-59.6	59.6	58.9	0.67	88.317		
300.0	300.0	300.0	300.0	0.6	0.6	-89.98	0.0	-59.6	59.6	58.4	1.12	52.990		
400.0	400.0	400.0	400.0	0.8	0.8	-89.98	0.0	-59.6	59.6	58.0	1.57	37.850		
500.0	500.0	500.0	500.0	1.0	1.0	-89.98	0.0	-59.6	59.6	57.5	2.02	29.439		
600.0	600.0	600.0	600.0	1.2	1.2	-89.98	0.0	-59.6	59.6	57.1	2.47	24.086		
700.0	700.0	700.0	700.0	1.5	1.5	-89.98	0.0	-59.6	59.6	56.6	2.92	20.381		
800.0	800.0	800.0	800.0	1.7	1.7	-89.98	0.0	-59.6	59.6	56.2	3.37	17.663		
900.0	900.0	900.0	900.0	1.9	1.9	-89.98	0.0	-59.6	59.6	55.7	3.82	15.585		
1,000.0	1,000.0	1,000.0	1,000.0	2.1	2.1	-89.98	0.0	-59.6	59.6	55.3	4.27	13.945		
1,100.0	1,100.0	1,100.0	1,100.0	2.4	2.4	-89.98	0.0	-59.6	59.6	54.8	4.72	12.617		
1,200.0	1,200.0	1,200.0	1,200.0	2.6	2.6	-89.98	0.0	-59.6	59.6	54.4	5.17	11.520		
1,300.0	1,300.0	1,300.0	1,300.0	2.8	2.8	-89.98	0.0	-59.6	59.6	53.9	5.62	10.598		
1,400.0	1,400.0	1,400.0	1,400.0	3.0	3.0	-89.98	0.0	-59.6	59.6	53.5	6.07	9.813		
1,500.0	1,500.0	1,500.0	1,500.0	3.3	3.3	-89.98	0.0	-59.6	59.6	53.0	6.52	9.136		
1,600.0	1,600.0	1,600.0	1,600.0	3.5	3.5	-89.98	0.0	-59.6	59.6	52.6	6.97	8.547		
1,700.0	1,700.0	1,700.0	1,700.0	3.7	3.7	-89.98	0.0	-59.6	59.6	52.1	7.42	8.029		
1,800.0	1,800.0	1,800.0	1,800.0	3.9	3.9	-89.98	0.0	-59.6	59.6	51.7	7.87	7.570		
1,900.0	1,900.0	1,900.0	1,900.0	4.2	4.2	-89.98	0.0	-59.6	59.6	51.2	8.32	7.161		
2,000.0	2,000.0	2,000.0	2,000.0	4.4	4.4	-89.98	0.0	-59.6	59.6	50.8	8.77	6.794		

CC - Min centre to center distance or convergent point, SF - min separation factor, ES - min ellipse separation

Company:	Great Western	Local Co-ordinate Reference:	Well Kodak North FD 27-179HC
Project:	SEC.26-T6N-R67W	TVD Reference:	WELL @ 4776.6ft (RKB - 16.5')
Reference Site:	Kodak North Pad Sec.26-T6N-R67W	MD Reference:	WELL @ 4776.6ft (RKB - 16.5')
Site Error:	0.0ft	North Reference:	True
Reference Well:	Kodak North FD 27-179HC	Survey Calculation Method:	Minimum Curvature
Well Error:	0.0ft	Output errors are at	2.00 sigma
Reference Wellbore	Wellbore #1	Database:	Landmark
Reference Design:	Plan #1 (11-21-13)	Offset TVD Reference:	Offset Datum

Offset Design													Offset Site Error:	0.0 ft	
Survey Program: 0-MWD													Offset Well Error:		0.0 ft
Reference		Offset		Semi Major Axis			Distance						Warning		
Measured Depth (ft)	Vertical Depth (ft)	Measured Depth (ft)	Vertical Depth (ft)	Reference (ft)	Offset (ft)	Highside Toolface (°)	Offset Wellbore Centre +N/-S (ft)	+E/-W (ft)	Between Centres (ft)	Between Ellipses (ft)	Minimum Separation (ft)	Separation Factor			
2,100.0	2,100.0	2,100.0	2,100.0	4.6	4.6	-89.98	0.0	-59.6	59.6	50.3	9.22	6.462			
2,200.0	2,200.0	2,200.0	2,200.0	4.8	4.8	-89.98	0.0	-59.6	59.6	49.9	9.66	6.162			
2,300.0	2,300.0	2,300.0	2,300.0	5.1	5.1	-89.98	0.0	-59.6	59.6	49.4	10.11	5.888			
2,400.0	2,400.0	2,400.0	2,400.0	5.3	5.3	-89.98	0.0	-59.6	59.6	49.0	10.56	5.637			
2,500.0	2,500.0	2,500.0	2,500.0	5.5	5.5	-89.98	0.0	-59.6	59.6	48.5	11.01	5.407			
2,600.0	2,600.0	2,600.0	2,600.0	5.7	5.7	-89.98	0.0	-59.6	59.6	48.1	11.46	5.195			
2,700.0	2,700.0	2,700.0	2,700.0	6.0	6.0	-89.98	0.0	-59.6	59.6	47.6	11.91	4.999			
2,800.0	2,800.0	2,800.0	2,800.0	6.2	6.2	-89.98	0.0	-59.6	59.6	47.2	12.36	4.817			
2,900.0	2,900.0	2,900.0	2,900.0	6.4	6.4	-89.98	0.0	-59.6	59.6	46.7	12.81	4.648			
3,000.0	3,000.0	3,000.0	3,000.0	6.6	6.6	-89.98	0.0	-59.6	59.6	46.3	13.26	4.491			
3,100.0	3,100.0	3,100.0	3,100.0	6.9	6.9	-89.98	0.0	-59.6	59.6	45.8	13.71	4.343			
3,200.0	3,200.0	3,200.0	3,200.0	7.1	7.1	-89.98	0.0	-59.6	59.6	45.4	14.16	4.206			
3,300.0	3,300.0	3,300.0	3,300.0	7.3	7.3	-89.98	0.0	-59.6	59.6	44.9	14.61	4.076			
3,400.0	3,400.0	3,400.0	3,400.0	7.5	7.5	-89.98	0.0	-59.6	59.6	44.5	15.06	3.954			
3,500.0	3,500.0	3,500.0	3,500.0	7.8	7.8	-89.98	0.0	-59.6	59.6	44.0	15.51	3.840			
3,600.0	3,600.0	3,600.0	3,600.0	8.0	8.0	-89.98	0.0	-59.6	59.6	43.6	15.96	3.732			
3,700.0	3,700.0	3,700.0	3,700.0	8.2	8.2	-89.98	0.0	-59.6	59.6	43.1	16.41	3.629			
3,800.0	3,800.0	3,800.0	3,800.0	8.4	8.4	-89.98	0.0	-59.6	59.6	42.7	16.86	3.533			
3,900.0	3,900.0	3,900.0	3,900.0	8.7	8.7	-89.98	0.0	-59.6	59.6	42.2	17.31	3.441			
4,000.0	4,000.0	4,000.0	4,000.0	8.9	8.9	-89.98	0.0	-59.6	59.6	41.8	17.76	3.354			
4,100.0	4,100.0	4,100.0	4,100.0	9.1	9.1	-89.98	0.0	-59.6	59.6	41.3	18.21	3.271			
4,200.0	4,200.0	4,200.0	4,200.0	9.3	9.3	-89.98	0.0	-59.6	59.6	40.9	18.66	3.192			
4,300.0	4,300.0	4,300.0	4,300.0	9.6	9.6	-89.98	0.0	-59.6	59.6	40.4	19.11	3.117			
4,400.0	4,400.0	4,400.0	4,400.0	9.8	9.8	-89.98	0.0	-59.6	59.6	40.0	19.55	3.045			
4,500.0	4,500.0	4,500.0	4,500.0	10.0	10.0	-89.98	0.0	-59.6	59.6	39.5	20.00	2.977			
4,600.0	4,600.0	4,600.0	4,600.0	10.2	10.2	-89.98	0.0	-59.6	59.6	39.1	20.45	2.912			
4,700.0	4,700.0	4,700.0	4,700.0	10.5	10.5	-89.98	0.0	-59.6	59.6	38.6	20.90	2.849			
4,800.0	4,800.0	4,800.0	4,800.0	10.7	10.7	-89.98	0.0	-59.6	59.6	38.2	21.35	2.789			
4,900.0	4,900.0	4,900.0	4,900.0	10.9	10.9	-89.98	0.0	-59.6	59.6	37.7	21.80	2.731			
5,000.0	5,000.0	5,000.0	5,000.0	11.1	11.1	-89.98	0.0	-59.6	59.6	37.3	22.25	2.676			
5,100.0	5,100.0	5,100.0	5,100.0	11.4	11.4	-89.98	0.0	-59.6	59.6	36.9	22.70	2.623			
5,200.0	5,200.0	5,200.0	5,200.0	11.6	11.6	-89.98	0.0	-59.6	59.6	36.4	23.15	2.572			
5,300.0	5,300.0	5,300.0	5,300.0	11.8	11.8	-89.98	0.0	-59.6	59.6	36.0	23.60	2.523			
5,400.0	5,400.0	5,400.0	5,400.0	12.0	12.0	-89.98	0.0	-59.6	59.6	35.5	24.05	2.476 CC, ES, SF			
5,500.0	5,500.0	5,494.8	5,494.6	12.2	12.2	179.23	4.1	-63.2	65.4	40.9	24.45	2.673			
5,600.0	5,599.8	5,586.2	5,584.6	12.4	12.4	-172.95	15.8	-73.5	83.9	59.1	24.81	3.381			
5,700.0	5,699.4	5,671.3	5,666.4	12.6	12.6	-165.78	33.4	-89.1	115.9	90.7	25.12	4.611			
5,800.0	5,798.6	5,750.0	5,739.4	12.8	12.9	-160.53	55.2	-108.4	160.4	135.0	25.41	6.312			
5,900.0	5,897.2	5,816.7	5,798.9	13.1	13.1	-157.01	77.8	-128.3	215.7	190.0	25.65	8.407			
6,000.0	5,995.2	5,888.6	5,860.9	13.3	13.3	-154.15	105.0	-152.4	278.7	252.8	25.89	10.765			
6,100.0	6,092.3	5,963.6	5,925.5	13.6	13.7	-152.16	133.6	-177.7	344.7	318.5	26.11	13.202			
6,200.0	6,188.6	6,036.5	5,988.2	13.8	14.0	-150.75	161.4	-202.3	413.1	386.8	26.31	15.701			
6,300.0	6,283.8	6,107.2	6,049.1	14.2	14.4	-149.68	188.4	-226.1	483.8	457.3	26.50	18.258			
6,400.0	6,377.8	6,175.6	6,107.9	14.5	14.8	-148.78	214.5	-249.2	556.7	530.0	26.69	20.859			
6,500.0	6,470.6	6,241.9	6,165.1	14.9	15.2	-148.62	239.8	-271.6	631.5	604.5	26.98	23.406			
6,600.0	6,563.6	7,534.0	6,922.6	15.3	22.4	-106.21	583.9	247.9	702.7	665.3	37.37	18.806			
6,700.0	6,661.3	7,554.0	6,922.6	15.6	22.7	-113.68	584.1	268.0	661.3	623.2	38.12	17.347			
6,800.0	6,761.0	7,550.4	6,922.6	15.8	22.7	103.41	584.0	264.4	631.7	593.6	38.11	16.574			
6,900.0	6,857.0	7,523.4	6,922.6	15.9	22.2	96.00	583.7	237.3	617.0	579.3	37.72	16.359			
6,954.6	6,905.8	7,499.2	6,922.6	15.9	21.7	93.12	583.5	213.2	615.1	577.7	37.40	16.447			
7,000.0	6,943.9	7,474.4	6,922.6	16.0	21.3	90.47	583.2	188.4	616.3	579.2	37.12	16.605			
7,100.0	7,016.8	7,406.4	6,922.6	16.2	20.1	84.02	582.5	120.3	624.8	588.5	36.27	17.228			

CC - Min centre to center distance or convergent point, SF - min separation factor, ES - min ellipse separation

Company:	Great Western	Local Co-ordinate Reference:	Well Kodak North FD 27-179HC
Project:	SEC.26-T6N-R67W	TVD Reference:	WELL @ 4776.6ft (RKB - 16.5')
Reference Site:	Kodak North Pad Sec.26-T6N-R67W	MD Reference:	WELL @ 4776.6ft (RKB - 16.5')
Site Error:	0.0ft	North Reference:	True
Reference Well:	Kodak North FD 27-179HC	Survey Calculation Method:	Minimum Curvature
Well Error:	0.0ft	Output errors are at	2.00 sigma
Reference Wellbore	Wellbore #1	Database:	Landmark
Reference Design:	Plan #1 (11-21-13)	Offset TVD Reference:	Offset Datum

Offset Design													Offset Site Error:	0.0 ft	
Survey Program: 0-MWD													Offset Well Error:		0.0 ft
Reference		Offset		Semi Major Axis			Distance						Warning		
Measured Depth (ft)	Vertical Depth (ft)	Measured Depth (ft)	Vertical Depth (ft)	Reference (ft)	Offset (ft)	Highside Toolface (°)	Offset Wellbore Centre +N/-S (ft)	+E/-W (ft)	Between Centres (ft)	Between Ellipses (ft)	Minimum Separation (ft)	Separation Factor			
7,200.0	7,071.5	7,316.6	6,922.0	16.6	18.8	77.71	581.3	30.6	636.3	601.1	35.18	18.088			
7,300.0	7,105.1	7,206.3	6,904.0	17.5	18.4	71.79	572.2	-77.6	643.2	609.2	34.09	18.872			
7,400.0	7,115.6	7,109.6	6,868.5	18.6	18.4	67.41	555.4	-165.7	643.6	609.8	33.84	19.018			
7,459.6	7,115.6	7,059.6	6,843.4	19.5	18.5	64.95	543.8	-207.4	642.8	608.9	33.96	18.927			
7,500.0	7,115.6	7,029.9	6,826.6	20.1	18.5	63.28	536.0	-230.5	643.1	609.1	34.05	18.887			
7,600.0	7,115.6	6,969.1	6,787.8	21.8	18.4	59.49	518.2	-273.8	649.7	615.2	34.51	18.830			
7,700.0	7,115.6	6,925.0	6,756.4	23.7	18.4	56.45	503.9	-301.2	666.1	630.9	35.22	18.913			
7,800.0	7,115.6	6,887.0	6,727.5	25.8	18.4	53.71	490.7	-322.0	693.1	657.1	36.00	19.251			
7,900.0	7,115.6	6,859.0	6,705.1	28.0	18.3	51.62	480.6	-335.6	730.7	693.7	36.99	19.755			
8,000.0	7,115.6	6,836.5	6,686.7	30.4	18.3	49.93	472.3	-345.3	777.9	739.8	38.09	20.421			
8,100.0	7,115.6	6,825.0	6,677.1	32.8	18.3	49.06	467.9	-349.9	833.5	793.9	39.54	21.080			
8,200.0	7,115.6	6,800.0	6,655.8	35.2	18.2	47.16	458.3	-358.9	896.1	855.6	40.47	22.143			
8,300.0	7,115.6	6,790.4	6,647.5	37.7	18.2	46.43	454.6	-362.0	964.5	922.6	41.94	22.995			

Company:	Great Western	Local Co-ordinate Reference:	Well Kodak North FD 27-179HC
Project:	SEC.26-T6N-R67W	TVD Reference:	WELL @ 4776.6ft (RKB - 16.5')
Reference Site:	Kodak North Pad Sec.26-T6N-R67W	MD Reference:	WELL @ 4776.6ft (RKB - 16.5')
Site Error:	0.0ft	North Reference:	True
Reference Well:	Kodak North FD 27-179HC	Survey Calculation Method:	Minimum Curvature
Well Error:	0.0ft	Output errors are at	2.00 sigma
Reference Wellbore	Wellbore #1	Database:	Landmark
Reference Design:	Plan #1 (11-21-13)	Offset TVD Reference:	Offset Datum

Offset Design													Offset Site Error:	0.0 ft	
Survey Program: 0-MWD													Offset Well Error:		0.0 ft
Reference		Offset		Semi Major Axis			Distance						Warning		
Measured Depth (ft)	Vertical Depth (ft)	Measured Depth (ft)	Vertical Depth (ft)	Reference (ft)	Offset (ft)	Highside Toolface (°)	Offset Wellbore Centre +N/-S (ft)	+E/-W (ft)	Between Centres (ft)	Between Ellipses (ft)	Minimum Separation (ft)	Separation Factor			
0.0	0.0	0.0	0.0	0.0	0.0	-89.98	0.0	-89.6	89.6						
100.0	100.0	100.0	100.0	0.1	0.1	-89.98	0.0	-89.6	89.6	89.4	0.22	398.664			
200.0	200.0	200.0	200.0	0.3	0.3	-89.98	0.0	-89.6	89.6	88.9	0.67	132.888			
300.0	300.0	300.0	300.0	0.6	0.6	-89.98	0.0	-89.6	89.6	88.5	1.12	79.733			
400.0	400.0	400.0	400.0	0.8	0.8	-89.98	0.0	-89.6	89.6	88.0	1.57	56.952			
500.0	500.0	500.0	500.0	1.0	1.0	-89.98	0.0	-89.6	89.6	87.6	2.02	44.296			
600.0	600.0	600.0	600.0	1.2	1.2	-89.98	0.0	-89.6	89.6	87.1	2.47	36.242			
700.0	700.0	700.0	700.0	1.5	1.5	-89.98	0.0	-89.6	89.6	86.7	2.92	30.666			
800.0	800.0	800.0	800.0	1.7	1.7	-89.98	0.0	-89.6	89.6	86.2	3.37	26.578			
900.0	900.0	900.0	900.0	1.9	1.9	-89.98	0.0	-89.6	89.6	85.8	3.82	23.451			
1,000.0	1,000.0	1,000.0	1,000.0	2.1	2.1	-89.98	0.0	-89.6	89.6	85.3	4.27	20.982			
1,100.0	1,100.0	1,100.0	1,100.0	2.4	2.4	-89.98	0.0	-89.6	89.6	84.9	4.72	18.984			
1,200.0	1,200.0	1,200.0	1,200.0	2.6	2.6	-89.98	0.0	-89.6	89.6	84.4	5.17	17.333			
1,300.0	1,300.0	1,300.0	1,300.0	2.8	2.8	-89.98	0.0	-89.6	89.6	84.0	5.62	15.947			
1,400.0	1,400.0	1,400.0	1,400.0	3.0	3.0	-89.98	0.0	-89.6	89.6	83.5	6.07	14.765			
1,500.0	1,500.0	1,500.0	1,500.0	3.3	3.3	-89.98	0.0	-89.6	89.6	83.1	6.52	13.747			
1,600.0	1,600.0	1,600.0	1,600.0	3.5	3.5	-89.98	0.0	-89.6	89.6	82.6	6.97	12.860			
1,700.0	1,700.0	1,700.0	1,700.0	3.7	3.7	-89.98	0.0	-89.6	89.6	82.2	7.42	12.081			
1,800.0	1,800.0	1,800.0	1,800.0	3.9	3.9	-89.98	0.0	-89.6	89.6	81.7	7.87	11.390			
1,900.0	1,900.0	1,900.0	1,900.0	4.2	4.2	-89.98	0.0	-89.6	89.6	81.3	8.32	10.775			
2,000.0	2,000.0	2,000.0	2,000.0	4.4	4.4	-89.98	0.0	-89.6	89.6	80.8	8.77	10.222			
2,100.0	2,100.0	2,100.0	2,100.0	4.6	4.6	-89.98	0.0	-89.6	89.6	80.4	9.22	9.724			
2,200.0	2,200.0	2,200.0	2,200.0	4.8	4.8	-89.98	0.0	-89.6	89.6	79.9	9.66	9.271			
2,300.0	2,300.0	2,300.0	2,300.0	5.1	5.1	-89.98	0.0	-89.6	89.6	79.5	10.11	8.859			
2,400.0	2,400.0	2,400.0	2,400.0	5.3	5.3	-89.98	0.0	-89.6	89.6	79.0	10.56	8.482			
2,500.0	2,500.0	2,500.0	2,500.0	5.5	5.5	-89.98	0.0	-89.6	89.6	78.6	11.01	8.136			
2,600.0	2,600.0	2,600.0	2,600.0	5.7	5.7	-89.98	0.0	-89.6	89.6	78.1	11.46	7.817			
2,700.0	2,700.0	2,700.0	2,700.0	6.0	6.0	-89.98	0.0	-89.6	89.6	77.7	11.91	7.522			
2,800.0	2,800.0	2,800.0	2,800.0	6.2	6.2	-89.98	0.0	-89.6	89.6	77.2	12.36	7.248			
2,900.0	2,900.0	2,900.0	2,900.0	6.4	6.4	-89.98	0.0	-89.6	89.6	76.8	12.81	6.994			
3,000.0	3,000.0	3,000.0	3,000.0	6.6	6.6	-89.98	0.0	-89.6	89.6	76.3	13.26	6.757			
3,100.0	3,100.0	3,100.0	3,100.0	6.9	6.9	-89.98	0.0	-89.6	89.6	75.9	13.71	6.535			
3,200.0	3,200.0	3,200.0	3,200.0	7.1	7.1	-89.98	0.0	-89.6	89.6	75.4	14.16	6.328			
3,300.0	3,300.0	3,300.0	3,300.0	7.3	7.3	-89.98	0.0	-89.6	89.6	75.0	14.61	6.133			
3,400.0	3,400.0	3,400.0	3,400.0	7.5	7.5	-89.98	0.0	-89.6	89.6	74.5	15.06	5.950			
3,500.0	3,500.0	3,500.0	3,500.0	7.8	7.8	-89.98	0.0	-89.6	89.6	74.1	15.51	5.778			
3,600.0	3,600.0	3,600.0	3,600.0	8.0	8.0	-89.98	0.0	-89.6	89.6	73.6	15.96	5.615			
3,700.0	3,700.0	3,700.0	3,700.0	8.2	8.2	-89.98	0.0	-89.6	89.6	73.2	16.41	5.461			
3,800.0	3,800.0	3,800.0	3,800.0	8.4	8.4	-89.98	0.0	-89.6	89.6	72.7	16.86	5.316			
3,900.0	3,900.0	3,900.0	3,900.0	8.7	8.7	-89.98	0.0	-89.6	89.6	72.3	17.31	5.177			
4,000.0	4,000.0	4,000.0	4,000.0	8.9	8.9	-89.98	0.0	-89.6	89.6	71.8	17.76	5.046			
4,100.0	4,100.0	4,100.0	4,100.0	9.1	9.1	-89.98	0.0	-89.6	89.6	71.4	18.21	4.922			
4,200.0	4,200.0	4,200.0	4,200.0	9.3	9.3	-89.98	0.0	-89.6	89.6	71.0	18.66	4.803			
4,300.0	4,300.0	4,300.0	4,300.0	9.6	9.6	-89.98	0.0	-89.6	89.6	70.5	19.11	4.690			
4,400.0	4,400.0	4,400.0	4,400.0	9.8	9.8	-89.98	0.0	-89.6	89.6	70.1	19.55	4.582			
4,500.0	4,500.0	4,500.0	4,500.0	10.0	10.0	-89.98	0.0	-89.6	89.6	69.6	20.00	4.479			
4,600.0	4,600.0	4,600.0	4,600.0	10.2	10.2	-89.98	0.0	-89.6	89.6	69.2	20.45	4.381			
4,700.0	4,700.0	4,700.0	4,700.0	10.5	10.5	-89.98	0.0	-89.6	89.6	68.7	20.90	4.287			
4,800.0	4,800.0	4,800.0	4,800.0	10.7	10.7	-89.98	0.0	-89.6	89.6	68.3	21.35	4.196			
4,900.0	4,900.0	4,900.0	4,900.0	10.9	10.9	-89.98	0.0	-89.6	89.6	67.8	21.80	4.110			
5,000.0	5,000.0	5,000.0	5,000.0	11.1	11.1	-89.98	0.0	-89.6	89.6	67.4	22.25	4.027			
5,100.0	5,100.0	5,100.0	5,100.0	11.4	11.4	-89.98	0.0	-89.6	89.6	66.9	22.70	3.947			

CC - Min centre to center distance or convergent point, SF - min separation factor, ES - min ellipse separation

Company:	Great Western	Local Co-ordinate Reference:	Well Kodak North FD 27-179HC
Project:	SEC.26-T6N-R67W	TVD Reference:	WELL @ 4776.6ft (RKB - 16.5')
Reference Site:	Kodak North Pad Sec.26-T6N-R67W	MD Reference:	WELL @ 4776.6ft (RKB - 16.5')
Site Error:	0.0ft	North Reference:	True
Reference Well:	Kodak North FD 27-179HC	Survey Calculation Method:	Minimum Curvature
Well Error:	0.0ft	Output errors are at	2.00 sigma
Reference Wellbore	Wellbore #1	Database:	Landmark
Reference Design:	Plan #1 (11-21-13)	Offset TVD Reference:	Offset Datum

Offset Design													Offset Site Error:	0.0 ft	
Survey Program: 0-MWD													Offset Well Error:		0.0 ft
Reference		Offset		Semi Major Axis			Distance						Warning		
Measured Depth (ft)	Vertical Depth (ft)	Measured Depth (ft)	Vertical Depth (ft)	Reference (ft)	Offset (ft)	Highside Toolface (°)	Offset Wellbore Centre +N/-S (ft)	+E/-W (ft)	Between Centres (ft)	Between Ellipses (ft)	Minimum Separation (ft)	Separation Factor			
5,200.0	5,200.0	5,200.0	5,200.0	11.6	11.6	-89.98	0.0	-89.6	89.6	66.5	23.15	3.871 CC			
5,300.0	5,300.0	5,296.2	5,296.2	11.8	11.8	-89.83	0.3	-91.6	91.7	68.1	23.58	3.888			
5,400.0	5,400.0	5,392.1	5,391.8	12.0	12.0	-89.44	1.0	-97.6	97.9	73.9	24.00	4.081			
5,500.0	5,500.0	5,487.0	5,486.3	12.2	12.2	176.62	2.1	-107.4	110.1	85.8	24.38	4.517			
5,600.0	5,599.8	5,580.2	5,578.4	12.4	12.4	177.31	3.6	-120.9	130.0	105.3	24.72	5.258			
5,700.0	5,699.4	5,670.7	5,667.4	12.6	12.6	177.96	5.6	-137.5	157.3	132.3	25.03	6.285			
5,800.0	5,798.6	5,757.9	5,752.4	12.8	12.8	178.51	7.8	-156.7	191.8	166.5	25.31	7.580			
5,900.0	5,897.2	5,841.2	5,832.9	13.1	13.0	178.94	10.3	-178.1	233.2	207.6	25.54	9.128			
6,000.0	5,995.2	5,920.2	5,908.4	13.3	13.3	179.28	12.9	-201.1	280.9	255.2	25.74	10.915			
6,100.0	6,092.3	6,000.0	5,983.9	13.6	13.5	179.57	15.9	-226.9	334.8	308.9	25.91	12.922			
6,200.0	6,188.6	6,070.0	6,049.4	13.8	13.8	179.78	18.7	-251.3	393.9	367.9	26.04	15.129			
6,300.0	6,283.8	6,148.2	6,122.5	14.2	14.1	179.96	21.9	-278.8	456.2	430.1	26.14	17.449			
6,400.0	6,377.8	6,224.1	6,193.5	14.5	14.4	-179.89	25.0	-305.5	521.3	495.1	26.22	19.882			
6,500.0	6,470.6	7,378.9	6,922.6	14.9	21.2	-155.58	62.5	217.4	459.0	429.1	29.81	15.397			
6,600.0	6,563.6	7,415.5	6,922.6	15.3	21.8	-145.88	62.6	254.0	368.4	336.2	32.22	11.435			
6,700.0	6,661.3	7,435.5	6,922.6	15.6	22.2	-124.18	62.7	274.0	275.1	237.6	37.46	7.343			
6,800.0	6,761.0	7,432.0	6,922.6	15.8	22.2	116.35	62.7	270.5	184.7	147.3	37.37	4.942			
6,900.0	6,857.0	7,405.0	6,922.6	15.9	21.6	109.04	62.6	243.4	113.3	76.5	36.85	3.075			
6,970.6	6,919.5	7,372.6	6,922.6	15.9	21.1	93.43	62.5	211.0	94.4	57.4	36.98	2.554 ES, SF			
7,000.0	6,943.9	7,356.0	6,922.6	16.0	20.8	84.44	62.5	194.5	97.5	60.8	36.64	2.661			
7,100.0	7,016.8	7,288.0	6,922.6	16.2	19.6	54.16	62.3	126.5	135.5	103.5	32.02	4.231			
7,200.0	7,071.5	7,207.5	6,922.5	16.6	18.5	36.95	61.9	46.0	178.9	152.6	26.30	6.803			
7,300.0	7,105.1	7,141.8	6,916.0	17.5	17.6	29.20	61.1	-19.3	215.8	193.2	22.60	9.551			
7,400.0	7,115.6	7,075.0	6,899.6	18.6	16.9	24.50	59.8	-84.0	246.3	225.7	20.66	11.925			
7,500.0	7,115.6	7,017.8	6,878.0	20.1	16.5	22.25	58.3	-136.9	280.3	260.0	20.31	13.798			
7,600.0	7,115.6	6,964.8	6,851.9	21.8	16.2	19.88	56.7	-182.9	326.0	305.9	20.05	16.259			
7,700.0	7,115.6	6,919.0	6,825.1	23.7	16.0	17.85	55.1	-220.0	381.7	361.7	19.97	19.110			
7,800.0	7,115.6	6,875.0	6,795.9	25.8	15.9	16.00	53.5	-252.9	445.5	425.5	19.99	22.291			
7,900.0	7,115.6	6,850.0	6,777.8	28.0	15.8	15.01	52.5	-270.1	515.8	495.4	20.33	25.367			
8,000.0	7,115.6	6,817.6	6,753.1	30.4	15.8	13.81	51.2	-291.0	591.1	570.5	20.60	28.697			
8,100.0	7,115.6	6,800.0	6,739.0	32.8	15.7	13.20	50.4	-301.5	670.6	649.5	21.09	31.791			
8,200.0	7,115.6	6,775.0	6,718.3	35.2	15.7	12.37	49.3	-315.5	753.1	731.6	21.50	35.027			
8,300.0	7,115.6	6,750.0	6,696.8	37.7	15.7	11.60	48.2	-328.3	838.2	816.3	21.92	38.236			
8,400.0	7,115.6	6,737.6	6,686.0	40.3	15.7	11.24	47.7	-334.1	925.4	902.9	22.52	41.096			

Company:	Great Western	Local Co-ordinate Reference:	Well Kodak North FD 27-179HC
Project:	SEC.26-T6N-R67W	TVD Reference:	WELL @ 4776.6ft (RKB - 16.5')
Reference Site:	Kodak North Pad Sec.26-T6N-R67W	MD Reference:	WELL @ 4776.6ft (RKB - 16.5')
Site Error:	0.0ft	North Reference:	True
Reference Well:	Kodak North FD 27-179HC	Survey Calculation Method:	Minimum Curvature
Well Error:	0.0ft	Output errors are at	2.00 sigma
Reference Wellbore	Wellbore #1	Database:	Landmark
Reference Design:	Plan #1 (11-21-13)	Offset TVD Reference:	Offset Datum

Offset Design													Offset Site Error:	0.0 ft	
Survey Program: 0-MWD													Offset Well Error:		0.0 ft
Reference				Semi Major Axis			Distance						Warning		
Measured Depth (ft)	Vertical Depth (ft)	Measured Depth (ft)	Vertical Depth (ft)	Reference (ft)	Offset (ft)	Highside Toolface (°)	Offset Wellbore Centre +N/-S (ft)	+E/-W (ft)	Between Centres (ft)	Between Ellipses (ft)	Minimum Separation (ft)	Separation Factor			
0.0	0.0	0.0	0.0	0.0	0.0	-89.98	0.0	-30.1	30.1						
100.0	100.0	100.0	100.0	0.1	0.1	-89.98	0.0	-30.1	30.1	29.8	0.22	133.713			
200.0	200.0	200.0	200.0	0.3	0.3	-89.98	0.0	-30.1	30.1	29.4	0.67	44.571			
300.0	300.0	300.0	300.0	0.6	0.6	-89.98	0.0	-30.1	30.1	28.9	1.12	26.743			
400.0	400.0	400.0	400.0	0.8	0.8	-89.98	0.0	-30.1	30.1	28.5	1.57	19.102			
500.0	500.0	500.0	500.0	1.0	1.0	-89.98	0.0	-30.1	30.1	28.0	2.02	14.857			
600.0	600.0	600.0	600.0	1.2	1.2	-89.98	0.0	-30.1	30.1	27.6	2.47	12.156			
700.0	700.0	700.0	700.0	1.5	1.5	-89.98	0.0	-30.1	30.1	27.1	2.92	10.286			
800.0	800.0	800.0	800.0	1.7	1.7	-89.98	0.0	-30.1	30.1	26.7	3.37	8.914			
900.0	900.0	900.0	900.0	1.9	1.9	-89.98	0.0	-30.1	30.1	26.2	3.82	7.865			
1,000.0	1,000.0	1,000.0	1,000.0	2.1	2.1	-89.98	0.0	-30.1	30.1	25.8	4.27	7.038			
1,100.0	1,100.0	1,100.0	1,100.0	2.4	2.4	-89.98	0.0	-30.1	30.1	25.3	4.72	6.367			
1,200.0	1,200.0	1,200.0	1,200.0	2.6	2.6	-89.98	0.0	-30.1	30.1	24.9	5.17	5.814			
1,300.0	1,300.0	1,300.0	1,300.0	2.8	2.8	-89.98	0.0	-30.1	30.1	24.4	5.62	5.349			
1,400.0	1,400.0	1,400.0	1,400.0	3.0	3.0	-89.98	0.0	-30.1	30.1	24.0	6.07	4.952			
1,500.0	1,500.0	1,500.0	1,500.0	3.3	3.3	-89.98	0.0	-30.1	30.1	23.5	6.52	4.611			
1,600.0	1,600.0	1,600.0	1,600.0	3.5	3.5	-89.98	0.0	-30.1	30.1	23.1	6.97	4.313			
1,700.0	1,700.0	1,700.0	1,700.0	3.7	3.7	-89.98	0.0	-30.1	30.1	22.6	7.42	4.052			
1,800.0	1,800.0	1,800.0	1,800.0	3.9	3.9	-89.98	0.0	-30.1	30.1	22.2	7.87	3.820			
1,900.0	1,900.0	1,900.0	1,900.0	4.2	4.2	-89.98	0.0	-30.1	30.1	21.7	8.32	3.614			
2,000.0	2,000.0	2,000.0	2,000.0	4.4	4.4	-89.98	0.0	-30.1	30.1	21.3	8.77	3.429			
2,100.0	2,100.0	2,100.0	2,100.0	4.6	4.6	-89.98	0.0	-30.1	30.1	20.8	9.22	3.261			
2,200.0	2,200.0	2,200.0	2,200.0	4.8	4.8	-89.98	0.0	-30.1	30.1	20.4	9.66	3.110			
2,300.0	2,300.0	2,300.0	2,300.0	5.1	5.1	-89.98	0.0	-30.1	30.1	19.9	10.11	2.971			
2,400.0	2,400.0	2,400.0	2,400.0	5.3	5.3	-89.98	0.0	-30.1	30.1	19.5	10.56	2.845			
2,500.0	2,500.0	2,500.0	2,500.0	5.5	5.5	-89.98	0.0	-30.1	30.1	19.0	11.01	2.729			
2,600.0	2,600.0	2,600.0	2,600.0	5.7	5.7	-89.98	0.0	-30.1	30.1	18.6	11.46	2.622			
2,700.0	2,700.0	2,700.0	2,700.0	6.0	6.0	-89.98	0.0	-30.1	30.1	18.1	11.91	2.523			
2,800.0	2,800.0	2,800.0	2,800.0	6.2	6.2	-89.98	0.0	-30.1	30.1	17.7	12.36	2.431			
2,900.0	2,900.0	2,900.0	2,900.0	6.4	6.4	-89.98	0.0	-30.1	30.1	17.2	12.81	2.346			
3,000.0	3,000.0	3,000.0	3,000.0	6.6	6.6	-89.98	0.0	-30.1	30.1	16.8	13.26	2.266			
3,100.0	3,100.0	3,100.0	3,100.0	6.9	6.9	-89.98	0.0	-30.1	30.1	16.3	13.71	2.192			
3,200.0	3,200.0	3,200.0	3,200.0	7.1	7.1	-89.98	0.0	-30.1	30.1	15.9	14.16	2.122			
3,300.0	3,300.0	3,300.0	3,300.0	7.3	7.3	-89.98	0.0	-30.1	30.1	15.4	14.61	2.057			
3,400.0	3,400.0	3,400.0	3,400.0	7.5	7.5	-89.98	0.0	-30.1	30.1	15.0	15.06	1.996			
3,500.0	3,500.0	3,500.0	3,500.0	7.8	7.8	-89.98	0.0	-30.1	30.1	14.5	15.51	1.938			
3,600.0	3,600.0	3,600.0	3,600.0	8.0	8.0	-89.98	0.0	-30.1	30.1	14.1	15.96	1.883			
3,700.0	3,700.0	3,700.0	3,700.0	8.2	8.2	-89.98	0.0	-30.1	30.1	13.6	16.41	1.832			
3,800.0	3,800.0	3,800.0	3,800.0	8.4	8.4	-89.98	0.0	-30.1	30.1	13.2	16.86	1.783			
3,900.0	3,900.0	3,900.0	3,900.0	8.7	8.7	-89.98	0.0	-30.1	30.1	12.7	17.31	1.737			
4,000.0	4,000.0	4,000.0	4,000.0	8.9	8.9	-89.98	0.0	-30.1	30.1	12.3	17.76	1.693			
4,100.0	4,100.0	4,100.0	4,100.0	9.1	9.1	-89.98	0.0	-30.1	30.1	11.8	18.21	1.651			
4,200.0	4,200.0	4,200.0	4,200.0	9.3	9.3	-89.98	0.0	-30.1	30.1	11.4	18.66	1.611			
4,300.0	4,300.0	4,300.0	4,300.0	9.6	9.6	-89.98	0.0	-30.1	30.1	10.9	19.11	1.573			
4,400.0	4,400.0	4,400.0	4,400.0	9.8	9.8	-89.98	0.0	-30.1	30.1	10.5	19.55	1.537			
4,500.0	4,500.0	4,500.0	4,500.0	10.0	10.0	-89.98	0.0	-30.1	30.1	10.1	20.00	1.502			
4,600.0	4,600.0	4,600.0	4,600.0	10.2	10.2	-89.98	0.0	-30.1	30.1	9.6	20.45	1.469	Level 3		
4,700.0	4,700.0	4,700.0	4,700.0	10.5	10.5	-89.98	0.0	-30.1	30.1	9.2	20.90	1.438	Level 3		
4,800.0	4,800.0	4,800.0	4,800.0	10.7	10.7	-89.98	0.0	-30.1	30.1	8.7	21.35	1.408	Level 3		
4,900.0	4,900.0	4,900.0	4,900.0	10.9	10.9	-89.98	0.0	-30.1	30.1	8.3	21.80	1.378	Level 3		
5,000.0	5,000.0	5,000.0	5,000.0	11.1	11.1	-89.98	0.0	-30.1	30.1	7.8	22.25	1.351	Level 3		
5,100.0	5,100.0	5,100.0	5,100.0	11.4	11.4	-89.98	0.0	-30.1	30.1	7.4	22.70	1.324	Level 3		

CC - Min centre to center distance or convergent point, SF - min separation factor, ES - min ellipse separation

Company:	Great Western	Local Co-ordinate Reference:	Well Kodak North FD 27-179HC
Project:	SEC.26-T6N-R67W	TVD Reference:	WELL @ 4776.6ft (RKB - 16.5')
Reference Site:	Kodak North Pad Sec.26-T6N-R67W	MD Reference:	WELL @ 4776.6ft (RKB - 16.5')
Site Error:	0.0ft	North Reference:	True
Reference Well:	Kodak North FD 27-179HC	Survey Calculation Method:	Minimum Curvature
Well Error:	0.0ft	Output errors are at	2.00 sigma
Reference Wellbore	Wellbore #1	Database:	Landmark
Reference Design:	Plan #1 (11-21-13)	Offset TVD Reference:	Offset Datum

Offset Design													Offset Site Error:	0.0ft	
Survey Program: 0-MWD													Offset Well Error:		0.0ft
Reference		Offset		Semi Major Axis			Distance						Warning		
Measured Depth (ft)	Vertical Depth (ft)	Measured Depth (ft)	Vertical Depth (ft)	Reference (ft)	Offset (ft)	Highside Toolface (°)	Offset Wellbore Centre +N/-S (ft)	+E/-W (ft)	Between Centres (ft)	Between Ellipses (ft)	Minimum Separation (ft)	Separation Factor			
5,200.0	5,200.0	5,200.0	5,200.0	11.6	11.6	-89.98	0.0	-30.1	30.1	6.9	23.15	1.298	Level 3		
5,300.0	5,300.0	5,300.0	5,300.0	11.8	11.8	-89.98	0.0	-30.1	30.1	6.5	23.60	1.273	Level 3		
5,400.0	5,400.0	5,400.0	5,400.0	12.0	12.0	-89.98	0.0	-30.1	30.1	6.0	24.05	1.250	Level 2		
5,500.0	5,500.0	5,500.0	5,500.0	12.2	12.2	175.75	0.0	-30.1	31.9	7.4	24.47	1.303	Level 3		
5,600.0	5,599.8	5,599.8	5,599.8	12.4	12.5	176.36	0.0	-30.1	37.4	12.5	24.85	1.504			
5,700.0	5,699.4	5,705.1	5,704.8	12.6	12.7	-179.28	2.3	-22.7	39.7	14.5	25.19	1.574			
5,800.0	5,798.6	5,809.2	5,806.2	12.8	12.9	-164.36	9.0	-1.1	33.2	7.7	25.52	1.302	Level 3		
5,896.6	5,893.9	5,905.9	5,896.7	13.1	13.2	-125.82	19.1	31.4	26.6	0.5	26.09	1.019	Level 2, CC		
5,900.0	5,897.2	5,909.2	5,899.7	13.1	13.2	-123.93	19.6	32.7	26.6	0.5	26.12	1.019	Level 2		
6,000.0	5,995.2	6,004.0	5,983.3	13.3	13.5	-76.56	32.8	75.4	41.1	14.3	26.74	1.535			
6,100.0	6,092.3	6,099.2	6,065.8	13.6	13.9	-59.60	46.9	120.6	67.9	40.9	27.03	2.513			
6,200.0	6,188.6	6,195.2	6,149.1	13.8	14.3	-53.94	61.1	166.2	95.0	67.6	27.39	3.468			
6,300.0	6,283.8	6,291.9	6,233.0	14.2	14.9	-52.04	75.5	212.2	120.3	92.4	27.84	4.320			
6,400.0	6,377.8	6,397.2	6,325.1	14.5	15.4	-52.51	91.2	260.6	142.5	114.1	28.41	5.014			
6,500.0	6,470.6	6,517.3	6,438.8	14.9	15.9	-61.76	110.6	292.3	151.4	121.9	29.53	5.127			
6,600.0	6,563.6	6,622.9	6,542.8	15.3	16.1	-78.67	128.2	293.6	155.0	124.1	30.90	5.016			
6,700.0	6,661.3	6,716.6	6,632.9	15.6	16.2	-110.44	143.5	273.7	169.3	137.6	31.62	5.353			
6,800.0	6,761.0	6,803.8	6,711.2	15.8	16.3	89.35	156.8	238.3	192.7	160.8	31.94	6.034			
6,900.0	6,857.0	6,886.5	6,777.9	15.9	16.3	72.22	168.0	190.8	219.5	187.6	31.86	6.888			
7,000.0	6,943.9	6,966.3	6,832.8	16.0	16.5	63.28	177.3	133.9	245.2	213.9	31.31	7.830			
7,100.0	7,016.8	7,044.1	6,875.8	16.2	16.9	57.57	184.5	69.6	267.1	236.6	30.50	8.758			
7,200.0	7,071.5	7,120.6	6,906.6	16.6	17.4	53.98	189.6	-0.2	283.7	253.7	29.94	9.476			
7,300.0	7,105.1	7,196.4	6,924.9	17.5	18.3	52.03	192.6	-73.6	293.8	263.6	30.19	9.730			
7,400.0	7,115.6	7,273.3	6,930.6	18.6	19.3	51.45	193.5	-150.2	296.9	265.3	31.62	9.389			
7,500.0	7,115.6	7,373.3	6,930.6	20.1	20.8	51.38	193.3	-250.2	296.4	262.4	33.98	8.723			
7,600.0	7,115.6	7,473.3	6,930.6	21.8	22.6	51.28	193.2	-350.2	295.8	259.1	36.69	8.061			
7,700.0	7,115.6	7,573.3	6,930.6	23.7	24.6	51.19	193.0	-450.2	295.2	255.5	39.72	7.431			
7,800.0	7,115.6	7,673.3	6,930.6	25.8	26.7	51.10	192.9	-550.2	294.6	251.6	42.99	6.852			
7,900.0	7,115.6	7,773.3	6,930.6	28.0	29.0	51.00	192.7	-650.2	294.0	247.6	46.45	6.330			
8,000.0	7,115.6	7,873.3	6,930.6	30.4	31.3	50.91	192.5	-750.2	293.4	243.4	50.05	5.862			
8,100.0	7,115.6	7,973.3	6,930.6	32.8	33.7	50.82	192.4	-850.2	292.8	239.1	53.76	5.446			
8,200.0	7,115.6	8,073.2	6,930.6	35.2	36.2	50.72	192.2	-950.1	292.2	234.7	57.57	5.076			
8,300.0	7,115.6	8,173.2	6,930.6	37.7	38.7	50.63	192.1	-1,050.1	291.6	230.2	61.44	4.747			
8,400.0	7,115.6	8,273.2	6,930.6	40.3	41.2	50.53	191.9	-1,150.1	291.0	225.7	65.37	4.452			
8,500.0	7,115.6	8,373.2	6,930.6	42.8	43.8	50.44	191.8	-1,250.1	290.5	221.1	69.34	4.189			
8,600.0	7,115.6	8,473.2	6,930.6	45.4	46.4	50.34	191.6	-1,350.1	289.9	216.5	73.35	3.952			
8,700.0	7,115.6	8,573.2	6,930.6	48.1	49.0	50.24	191.4	-1,450.1	289.3	211.9	77.38	3.738			
8,800.0	7,115.6	8,673.2	6,930.6	50.7	51.7	50.15	191.3	-1,550.1	288.7	207.3	81.44	3.545			
8,900.0	7,115.6	8,773.2	6,930.6	53.4	54.3	50.05	191.1	-1,650.1	288.1	202.6	85.51	3.369			
9,000.0	7,115.6	8,873.2	6,930.6	56.1	57.0	49.95	191.0	-1,750.1	287.5	197.9	89.59	3.209			
9,100.0	7,115.6	8,973.2	6,930.6	58.8	59.7	49.85	190.8	-1,850.1	286.9	193.3	93.68	3.063			
9,200.0	7,115.6	9,073.2	6,930.6	61.5	62.4	49.76	190.6	-1,950.1	286.4	188.6	97.78	2.929			
9,300.0	7,115.6	9,173.2	6,930.6	64.2	65.1	49.66	190.5	-2,050.1	285.8	183.9	101.88	2.805			
9,400.0	7,115.6	9,273.2	6,930.6	66.9	67.8	49.56	190.3	-2,150.1	285.2	179.2	105.99	2.691			
9,500.0	7,115.6	9,373.2	6,930.6	69.6	70.6	49.46	190.2	-2,250.1	284.6	174.5	110.09	2.585			
9,600.0	7,115.6	9,473.2	6,930.6	72.3	73.3	49.36	190.0	-2,350.1	284.0	169.8	114.20	2.487			
9,700.0	7,115.6	9,573.2	6,930.6	75.1	76.0	49.26	189.9	-2,450.1	283.5	165.2	118.29	2.396			
9,800.0	7,115.6	9,673.2	6,930.6	77.8	78.8	49.16	189.7	-2,550.1	282.9	160.5	122.39	2.311			
9,900.0	7,115.6	9,773.2	6,930.6	80.6	81.5	49.05	189.5	-2,650.1	282.3	155.8	126.48	2.232			
10,000.0	7,115.6	9,873.2	6,930.6	83.3	84.3	48.95	189.4	-2,750.1	281.7	151.2	130.57	2.158			
10,100.0	7,115.6	9,973.2	6,930.6	86.1	87.0	48.85	189.2	-2,850.1	281.2	146.5	134.65	2.088			
10,200.0	7,115.6	10,073.2	6,930.6	88.8	89.8	48.75	189.1	-2,950.1	280.6	141.9	138.72	2.023			

CC - Min centre to center distance or convergent point, SF - min separation factor, ES - min ellipse separation

Company:	Great Western	Local Co-ordinate Reference:	Well Kodak North FD 27-179HC
Project:	SEC.26-T6N-R67W	TVD Reference:	WELL @ 4776.6ft (RKB - 16.5')
Reference Site:	Kodak North Pad Sec.26-T6N-R67W	MD Reference:	WELL @ 4776.6ft (RKB - 16.5')
Site Error:	0.0ft	North Reference:	True
Reference Well:	Kodak North FD 27-179HC	Survey Calculation Method:	Minimum Curvature
Well Error:	0.0ft	Output errors are at	2.00 sigma
Reference Wellbore	Wellbore #1	Database:	Landmark
Reference Design:	Plan #1 (11-21-13)	Offset TVD Reference:	Offset Datum

Offset Design													Offset Site Error:	0.0 ft	
Survey Program: 0-MWD													Offset Well Error:		0.0 ft
Reference		Offset		Semi Major Axis			Distance						Warning		
Measured Depth (ft)	Vertical Depth (ft)	Measured Depth (ft)	Vertical Depth (ft)	Reference (ft)	Offset (ft)	Highside Toolface (°)	Offset Wellbore Centre +N/-S (ft)	+E/-W (ft)	Between Centres (ft)	Between Ellipses (ft)	Minimum Separation (ft)	Separation Factor			
10,300.0	7,115.6	10,173.2	6,930.6	91.6	92.5	48.65	188.9	-3,050.1	280.0	137.2	142.78	1.961			
10,400.0	7,115.6	10,273.2	6,930.6	94.4	95.3	48.54	188.8	-3,150.1	279.4	132.6	146.84	1.903			
10,500.0	7,115.6	10,373.2	6,930.6	97.1	98.1	48.44	188.6	-3,250.1	278.9	128.0	150.88	1.848			
10,600.0	7,115.6	10,473.2	6,930.6	99.9	100.8	48.33	188.4	-3,350.1	278.3	123.4	154.92	1.796			
10,700.0	7,115.6	10,573.2	6,930.6	102.7	103.6	48.23	188.3	-3,450.1	277.7	118.8	158.95	1.747			
10,800.0	7,115.6	10,673.2	6,930.6	105.4	106.4	48.12	188.1	-3,550.1	277.2	114.2	162.97	1.701			
10,900.0	7,115.6	10,773.2	6,930.6	108.2	109.1	48.02	188.0	-3,650.1	276.6	109.6	166.97	1.656			
11,000.0	7,115.6	10,873.2	6,930.6	111.0	111.9	47.91	187.8	-3,750.1	276.0	105.1	170.97	1.614			
11,100.0	7,115.6	10,973.2	6,930.6	113.8	114.7	47.81	187.6	-3,850.1	275.5	100.5	174.95	1.574			
11,200.0	7,115.6	11,073.2	6,930.6	116.6	117.5	47.70	187.5	-3,950.1	274.9	96.0	178.92	1.536			
11,300.0	7,115.6	11,173.2	6,930.6	119.3	120.2	47.59	187.3	-4,050.1	274.3	91.4	182.88	1.500	Level 3		
11,400.0	7,115.6	11,273.2	6,930.6	122.1	123.0	47.49	187.2	-4,150.1	273.8	86.9	186.83	1.465	Level 3		
11,500.0	7,115.6	11,373.2	6,930.6	124.9	125.8	47.38	187.0	-4,250.0	273.2	82.4	190.77	1.432	Level 3		
11,600.0	7,115.6	11,473.2	6,930.6	127.7	128.6	47.27	186.9	-4,350.0	272.6	77.9	194.69	1.400	Level 3		
11,700.0	7,115.6	11,573.1	6,930.6	130.5	131.4	47.16	186.7	-4,450.0	272.1	73.5	198.60	1.370	Level 3		
11,800.0	7,115.6	11,673.1	6,930.6	133.3	134.2	47.05	186.5	-4,550.0	271.5	69.0	202.50	1.341	Level 3		
11,900.0	7,115.6	11,773.1	6,930.6	136.1	136.9	46.94	186.4	-4,650.0	271.0	64.6	206.38	1.313	Level 3		
12,000.0	7,115.6	11,873.1	6,930.6	138.8	139.7	46.83	186.2	-4,750.0	270.4	60.2	210.25	1.286	Level 3		
12,100.0	7,115.6	11,973.1	6,930.6	141.6	142.5	46.72	186.1	-4,850.0	269.8	55.7	214.10	1.260	Level 3		
12,200.0	7,115.6	12,073.1	6,930.6	144.4	145.3	46.61	185.9	-4,950.0	269.3	51.3	217.94	1.236	Level 2		
12,300.0	7,115.6	12,173.1	6,930.6	147.2	148.1	46.50	185.8	-5,050.0	268.7	47.0	221.77	1.212	Level 2		
12,400.0	7,115.6	12,273.1	6,930.6	150.0	150.9	46.38	185.6	-5,150.0	268.2	42.6	225.58	1.189	Level 2		
12,500.0	7,115.6	12,373.1	6,930.6	152.8	153.7	46.27	185.4	-5,250.0	267.6	38.3	229.38	1.167	Level 2		
12,600.0	7,115.6	12,473.1	6,930.6	155.6	156.5	46.16	185.3	-5,350.0	267.1	33.9	233.16	1.145	Level 2		
12,700.0	7,115.6	12,573.1	6,930.6	158.4	159.3	46.04	185.1	-5,450.0	266.5	29.6	236.93	1.125	Level 2		
12,800.0	7,115.6	12,673.1	6,930.6	161.2	162.1	45.93	185.0	-5,550.0	266.0	25.3	240.68	1.105	Level 2		
12,900.0	7,115.6	12,773.1	6,930.6	164.0	164.9	45.82	184.8	-5,650.0	265.4	21.0	244.42	1.086	Level 2		
13,000.0	7,115.6	12,873.1	6,930.6	166.8	167.6	45.70	184.6	-5,750.0	264.9	16.8	248.14	1.068	Level 2		
13,100.0	7,115.6	12,973.1	6,930.6	169.6	170.4	45.58	184.5	-5,850.0	264.3	12.5	251.84	1.050	Level 2		
13,200.0	7,115.6	13,073.1	6,930.6	172.4	173.2	45.47	184.3	-5,950.0	263.8	8.3	255.53	1.032	Level 2		
13,300.0	7,115.6	13,173.1	6,930.6	175.2	176.0	45.35	184.2	-6,050.0	263.3	4.1	259.21	1.016	Level 2		
13,400.0	7,115.6	13,273.1	6,930.6	178.0	178.8	45.24	184.0	-6,150.0	262.7	-0.1	262.86	0.999	Level 1		
13,500.0	7,115.6	13,373.1	6,930.6	180.8	181.6	45.12	183.9	-6,250.0	262.2	-4.3	266.50	0.984	Level 1		
13,600.0	7,115.6	13,473.1	6,930.6	183.6	184.4	45.00	183.7	-6,350.0	261.6	-8.5	270.12	0.969	Level 1		
13,700.0	7,115.6	13,573.1	6,930.6	186.4	187.2	44.88	183.5	-6,450.0	261.1	-12.6	273.73	0.954	Level 1		
13,800.0	7,115.6	13,673.1	6,930.6	189.2	190.0	44.76	183.4	-6,550.0	260.6	-16.8	277.32	0.940	Level 1		
13,900.0	7,115.6	13,773.1	6,930.6	192.0	192.8	44.64	183.2	-6,650.0	260.0	-20.9	280.89	0.926	Level 1		
13,974.7	7,115.6	13,846.6	6,930.6	194.0	194.9	44.56	183.1	-6,723.5	259.6	-23.9	283.53	0.916	Level 1, ES, SF		

Company:	Great Western	Local Co-ordinate Reference:	Well Kodak North FD 27-179HC
Project:	SEC.26-T6N-R67W	TVD Reference:	WELL @ 4776.6ft (RKB - 16.5')
Reference Site:	Kodak North Pad Sec.26-T6N-R67W	MD Reference:	WELL @ 4776.6ft (RKB - 16.5')
Site Error:	0.0ft	North Reference:	True
Reference Well:	Kodak North FD 27-179HC	Survey Calculation Method:	Minimum Curvature
Well Error:	0.0ft	Output errors are at	2.00 sigma
Reference Wellbore	Wellbore #1	Database:	Landmark
Reference Design:	Plan #1 (11-21-13)	Offset TVD Reference:	Offset Datum

Offset Design													Offset Site Error:	0.0 ft	
Survey Program: 0-MWD													Offset Well Error:		0.0 ft
Reference		Offset		Semi Major Axis			Distance						Warning		
Measured Depth (ft)	Vertical Depth (ft)	Measured Depth (ft)	Vertical Depth (ft)	Reference (ft)	Offset (ft)	Highside Toolface (°)	Offset Wellbore Centre +N/-S (ft)	+E/-W (ft)	Between Centres (ft)	Between Ellipses (ft)	Minimum Separation (ft)	Separation Factor			
0.0	0.0	0.0	0.0	0.0	0.0	90.02	0.0	30.1	30.1						
100.0	100.0	100.0	100.0	0.1	0.1	90.02	0.0	30.1	30.1	29.8	0.22	133.713			
200.0	200.0	200.0	200.0	0.3	0.3	90.02	0.0	30.1	30.1	29.4	0.67	44.571			
300.0	300.0	300.0	300.0	0.6	0.6	90.02	0.0	30.1	30.1	28.9	1.12	26.743			
400.0	400.0	400.0	400.0	0.8	0.8	90.02	0.0	30.1	30.1	28.5	1.57	19.102			
500.0	500.0	500.0	500.0	1.0	1.0	90.02	0.0	30.1	30.1	28.0	2.02	14.857			
600.0	600.0	600.0	600.0	1.2	1.2	90.02	0.0	30.1	30.1	27.6	2.47	12.156			
700.0	700.0	700.0	700.0	1.5	1.5	90.02	0.0	30.1	30.1	27.1	2.92	10.286			
800.0	800.0	800.0	800.0	1.7	1.7	90.02	0.0	30.1	30.1	26.7	3.37	8.914			
900.0	900.0	900.0	900.0	1.9	1.9	90.02	0.0	30.1	30.1	26.2	3.82	7.865			
1,000.0	1,000.0	1,000.0	1,000.0	2.1	2.1	90.02	0.0	30.1	30.1	25.8	4.27	7.038			
1,100.0	1,100.0	1,100.0	1,100.0	2.4	2.4	90.02	0.0	30.1	30.1	25.3	4.72	6.367			
1,200.0	1,200.0	1,200.0	1,200.0	2.6	2.6	90.02	0.0	30.1	30.1	24.9	5.17	5.814			
1,300.0	1,300.0	1,300.0	1,300.0	2.8	2.8	90.02	0.0	30.1	30.1	24.4	5.62	5.349			
1,400.0	1,400.0	1,400.0	1,400.0	3.0	3.0	90.02	0.0	30.1	30.1	24.0	6.07	4.952			
1,500.0	1,500.0	1,500.0	1,500.0	3.3	3.3	90.02	0.0	30.1	30.1	23.5	6.52	4.611			
1,600.0	1,600.0	1,600.0	1,600.0	3.5	3.5	90.02	0.0	30.1	30.1	23.1	6.97	4.313			
1,700.0	1,700.0	1,700.0	1,700.0	3.7	3.7	90.02	0.0	30.1	30.1	22.6	7.42	4.052			
1,800.0	1,800.0	1,800.0	1,800.0	3.9	3.9	90.02	0.0	30.1	30.1	22.2	7.87	3.820			
1,900.0	1,900.0	1,900.0	1,900.0	4.2	4.2	90.02	0.0	30.1	30.1	21.7	8.32	3.614			
2,000.0	2,000.0	2,000.0	2,000.0	4.4	4.4	90.02	0.0	30.1	30.1	21.3	8.77	3.429			
2,100.0	2,100.0	2,100.0	2,100.0	4.6	4.6	90.02	0.0	30.1	30.1	20.8	9.22	3.261			
2,200.0	2,200.0	2,200.0	2,200.0	4.8	4.8	90.02	0.0	30.1	30.1	20.4	9.66	3.110			
2,300.0	2,300.0	2,300.0	2,300.0	5.1	5.1	90.02	0.0	30.1	30.1	19.9	10.11	2.971			
2,400.0	2,400.0	2,400.0	2,400.0	5.3	5.3	90.02	0.0	30.1	30.1	19.5	10.56	2.845			
2,500.0	2,500.0	2,500.0	2,500.0	5.5	5.5	90.02	0.0	30.1	30.1	19.0	11.01	2.729			
2,600.0	2,600.0	2,600.0	2,600.0	5.7	5.7	90.02	0.0	30.1	30.1	18.6	11.46	2.622			
2,700.0	2,700.0	2,700.0	2,700.0	6.0	6.0	90.02	0.0	30.1	30.1	18.1	11.91	2.523			
2,800.0	2,800.0	2,800.0	2,800.0	6.2	6.2	90.02	0.0	30.1	30.1	17.7	12.36	2.431			
2,900.0	2,900.0	2,900.0	2,900.0	6.4	6.4	90.02	0.0	30.1	30.1	17.2	12.81	2.346			
3,000.0	3,000.0	3,000.0	3,000.0	6.6	6.6	90.02	0.0	30.1	30.1	16.8	13.26	2.266			
3,100.0	3,100.0	3,100.0	3,100.0	6.9	6.9	90.02	0.0	30.1	30.1	16.3	13.71	2.192			
3,200.0	3,200.0	3,200.0	3,200.0	7.1	7.1	90.02	0.0	30.1	30.1	15.9	14.16	2.122			
3,300.0	3,300.0	3,300.0	3,300.0	7.3	7.3	90.02	0.0	30.1	30.1	15.4	14.61	2.057			
3,400.0	3,400.0	3,400.0	3,400.0	7.5	7.5	90.02	0.0	30.1	30.1	15.0	15.06	1.996			
3,500.0	3,500.0	3,500.0	3,500.0	7.8	7.8	90.02	0.0	30.1	30.1	14.5	15.51	1.938			
3,600.0	3,600.0	3,600.0	3,600.0	8.0	8.0	90.02	0.0	30.1	30.1	14.1	15.96	1.883			
3,700.0	3,700.0	3,700.0	3,700.0	8.2	8.2	90.02	0.0	30.1	30.1	13.6	16.41	1.832			
3,800.0	3,800.0	3,800.0	3,800.0	8.4	8.4	90.02	0.0	30.1	30.1	13.2	16.86	1.783			
3,900.0	3,900.0	3,900.0	3,900.0	8.7	8.7	90.02	0.0	30.1	30.1	12.7	17.31	1.737			
4,000.0	4,000.0	4,000.0	4,000.0	8.9	8.9	90.02	0.0	30.1	30.1	12.3	17.76	1.693			
4,100.0	4,100.0	4,100.0	4,100.0	9.1	9.1	90.02	0.0	30.1	30.1	11.8	18.21	1.651			
4,200.0	4,200.0	4,200.0	4,200.0	9.3	9.3	90.02	0.0	30.1	30.1	11.4	18.66	1.611			
4,300.0	4,300.0	4,300.0	4,300.0	9.6	9.6	90.02	0.0	30.1	30.1	10.9	19.11	1.573			
4,400.0	4,400.0	4,400.0	4,400.0	9.8	9.8	90.02	0.0	30.1	30.1	10.5	19.55	1.537			
4,500.0	4,500.0	4,500.0	4,500.0	10.0	10.0	90.02	0.0	30.1	30.1	10.1	20.00	1.502			
4,600.0	4,600.0	4,600.0	4,600.0	10.2	10.2	90.02	0.0	30.1	30.1	9.6	20.45	1.469 Level 3			
4,700.0	4,700.0	4,700.0	4,700.0	10.5	10.5	90.02	0.0	30.1	30.1	9.2	20.90	1.438 Level 3			
4,800.0	4,800.0	4,800.0	4,800.0	10.7	10.7	90.02	0.0	30.1	30.1	8.7	21.35	1.408 Level 3			
4,900.0	4,900.0	4,900.0	4,900.0	10.9	10.9	90.02	0.0	30.1	30.1	8.3	21.80	1.378 Level 3			
5,000.0	5,000.0	5,000.0	5,000.0	11.1	11.1	90.02	0.0	30.1	30.1	7.8	22.25	1.351 Level 3			
5,100.0	5,100.0	5,100.0	5,100.0	11.4	11.4	90.02	0.0	30.1	30.1	7.4	22.70	1.324 Level 3			

CC - Min centre to center distance or convergent point, SF - min separation factor, ES - min ellipse separation

Company:	Great Western	Local Co-ordinate Reference:	Well Kodak North FD 27-179HC
Project:	SEC.26-T6N-R67W	TVD Reference:	WELL @ 4776.6ft (RKB - 16.5')
Reference Site:	Kodak North Pad Sec.26-T6N-R67W	MD Reference:	WELL @ 4776.6ft (RKB - 16.5')
Site Error:	0.0ft	North Reference:	True
Reference Well:	Kodak North FD 27-179HC	Survey Calculation Method:	Minimum Curvature
Well Error:	0.0ft	Output errors are at	2.00 sigma
Reference Wellbore	Wellbore #1	Database:	Landmark
Reference Design:	Plan #1 (11-21-13)	Offset TVD Reference:	Offset Datum

Offset Design													Offset Site Error:	0.0ft	
Survey Program: 0-MWD													Offset Well Error:		0.0ft
Reference		Offset		Semi Major Axis			Distance						Warning		
Measured Depth (ft)	Vertical Depth (ft)	Measured Depth (ft)	Vertical Depth (ft)	Reference (ft)	Offset (ft)	Highside Toolface (°)	Offset Wellbore Centre +N/-S (ft)	+E/-W (ft)	Between Centres (ft)	Between Ellipses (ft)	Minimum Separation (ft)	Separation Factor			
5,200.0	5,200.0	5,200.0	5,200.0	11.6	11.6	90.02	0.0	30.1	30.1	6.9	23.15	1.298	Level 3, CC, ES		
5,300.0	5,300.0	5,298.9	5,298.8	11.8	11.8	92.11	-1.2	31.8	31.9	8.3	23.58	1.352	Level 3		
5,400.0	5,400.0	5,397.3	5,397.1	12.0	12.0	97.11	-4.6	37.2	37.6	13.6	23.98	1.567			
5,500.0	5,500.0	5,495.3	5,494.5	12.2	12.1	8.47	-10.4	46.0	45.7	21.3	24.35	1.875			
5,600.0	5,599.8	5,592.7	5,590.8	12.4	12.3	14.53	-18.3	58.2	54.6	30.0	24.69	2.213			
5,700.0	5,699.4	5,689.5	5,685.8	12.6	12.5	20.42	-28.4	73.7	64.8	39.8	25.00	2.592			
5,800.0	5,798.6	5,785.6	5,779.3	12.8	12.8	25.91	-40.6	92.4	76.4	51.1	25.31	3.018			
5,900.0	5,897.2	5,881.0	5,871.0	13.1	13.0	30.90	-54.8	114.3	89.6	63.9	25.63	3.495			
6,000.0	5,995.2	5,975.6	5,960.9	13.3	13.3	35.35	-70.9	139.0	104.4	78.4	25.96	4.021			
6,100.0	6,092.3	6,069.3	6,048.6	13.6	13.6	39.26	-88.8	166.6	120.9	94.6	26.32	4.594			
6,200.0	6,188.6	6,166.4	6,138.5	13.8	14.0	42.99	-108.8	197.4	138.0	111.2	26.73	5.162			
6,300.0	6,283.8	6,264.7	6,229.5	14.2	14.4	46.85	-129.1	228.6	153.2	125.9	27.22	5.627			
6,400.0	6,377.8	6,363.0	6,320.5	14.5	14.8	50.94	-149.4	259.8	166.7	138.9	27.82	5.992			
6,500.0	6,470.6	6,471.8	6,422.3	14.9	15.3	56.99	-172.1	290.2	177.7	149.0	28.69	6.194			
6,600.0	6,563.6	6,579.7	6,527.1	15.3	15.6	68.35	-195.5	296.7	184.0	154.1	29.95	6.146			
6,700.0	6,661.3	6,676.3	6,619.9	15.6	15.8	66.14	-216.3	280.3	197.4	166.5	30.85	6.399			
6,800.0	6,761.0	6,766.5	6,701.3	15.8	15.8	-69.39	-234.5	246.6	217.6	186.3	31.31	6.951			
6,900.0	6,857.0	6,852.1	6,770.9	15.9	15.9	-67.45	-250.1	199.6	240.6	209.3	31.33	7.682			
7,000.0	6,943.9	6,934.5	6,828.4	16.0	16.0	-62.39	-263.1	142.1	263.0	232.2	30.87	8.522			
7,100.0	7,016.8	7,014.8	6,873.4	16.2	16.1	-58.26	-273.2	76.5	282.4	252.3	30.14	9.370			
7,200.0	7,071.5	7,093.8	6,905.6	16.6	16.6	-55.39	-280.5	4.9	297.2	267.5	29.63	10.028			
7,300.0	7,105.1	7,171.9	6,924.8	17.5	17.4	-53.74	-284.9	-70.6	306.2	276.3	29.93	10.230			
7,400.0	7,115.6	7,251.0	6,930.6	18.6	18.5	-53.24	-286.3	-149.4	309.1	277.7	31.42	9.836			
7,500.0	7,115.6	7,351.0	6,930.6	20.1	20.0	-53.31	-286.5	-249.4	309.6	275.7	33.88	9.138			
7,600.0	7,115.6	7,451.0	6,930.6	21.8	21.8	-53.39	-286.6	-349.4	310.2	273.5	36.74	8.444			
7,700.0	7,115.6	7,551.0	6,930.6	23.7	23.8	-53.47	-286.8	-449.4	310.8	270.9	39.93	7.784			
7,800.0	7,115.6	7,651.0	6,930.6	25.8	26.0	-53.56	-286.9	-549.4	311.4	268.1	43.39	7.178			
7,900.0	7,115.6	7,751.0	6,930.6	28.0	28.2	-53.64	-287.1	-649.4	312.1	265.0	47.05	6.632			
8,000.0	7,115.6	7,851.0	6,930.6	30.4	30.6	-53.72	-287.3	-749.4	312.7	261.8	50.88	6.145			
8,100.0	7,115.6	7,951.0	6,930.6	32.8	33.0	-53.81	-287.4	-849.4	313.3	258.4	54.84	5.713			
8,200.0	7,115.6	8,051.0	6,930.6	35.2	35.5	-53.89	-287.6	-949.4	313.9	255.0	58.91	5.328			
8,300.0	7,115.6	8,151.0	6,930.6	37.7	38.0	-53.97	-287.7	-1,049.4	314.5	251.5	63.07	4.987			
8,400.0	7,115.6	8,251.0	6,930.6	40.3	40.5	-54.05	-287.9	-1,149.4	315.1	247.8	67.30	4.682			
8,500.0	7,115.6	8,351.0	6,930.6	42.8	43.1	-54.13	-288.0	-1,249.4	315.8	244.2	71.60	4.410			
8,600.0	7,115.6	8,451.0	6,930.6	45.4	45.8	-54.21	-288.2	-1,349.4	316.4	240.4	75.94	4.166			
8,700.0	7,115.6	8,551.0	6,930.6	48.1	48.4	-54.29	-288.4	-1,449.4	317.0	236.7	80.34	3.946			
8,800.0	7,115.6	8,651.0	6,930.6	50.7	51.0	-54.37	-288.5	-1,549.4	317.6	232.8	84.77	3.747			
8,900.0	7,115.6	8,751.0	6,930.6	53.4	53.7	-54.45	-288.7	-1,649.4	318.2	229.0	89.24	3.566			
9,000.0	7,115.6	8,851.0	6,930.6	56.1	56.4	-54.53	-288.8	-1,749.4	318.9	225.1	93.74	3.401			
9,100.0	7,115.6	8,951.0	6,930.6	58.8	59.1	-54.61	-289.0	-1,849.4	319.5	221.2	98.27	3.251			
9,200.0	7,115.6	9,051.0	6,930.6	61.5	61.8	-54.69	-289.2	-1,949.4	320.1	217.3	102.83	3.113			
9,300.0	7,115.6	9,151.0	6,930.6	64.2	64.5	-54.77	-289.3	-2,049.4	320.7	213.3	107.41	2.986			
9,400.0	7,115.6	9,251.0	6,930.6	66.9	67.2	-54.85	-289.5	-2,149.4	321.3	209.3	112.01	2.869			
9,500.0	7,115.6	9,351.0	6,930.6	69.6	70.0	-54.93	-289.6	-2,249.4	322.0	205.3	116.62	2.761			
9,600.0	7,115.6	9,451.0	6,930.6	72.3	72.7	-55.01	-289.8	-2,349.4	322.6	201.3	121.26	2.660			
9,700.0	7,115.6	9,551.0	6,930.6	75.1	75.4	-55.08	-289.9	-2,449.3	323.2	197.3	125.92	2.567			
9,800.0	7,115.6	9,651.0	6,930.6	77.8	78.2	-55.16	-290.1	-2,549.3	323.8	193.3	130.59	2.480			
9,900.0	7,115.6	9,751.0	6,930.6	80.6	80.9	-55.24	-290.3	-2,649.3	324.5	189.2	135.27	2.399			
10,000.0	7,115.6	9,851.0	6,930.6	83.3	83.7	-55.31	-290.4	-2,749.3	325.1	185.1	139.97	2.323			
10,100.0	7,115.6	9,951.0	6,930.6	86.1	86.4	-55.39	-290.6	-2,849.3	325.7	181.0	144.68	2.251			
10,200.0	7,115.6	10,051.0	6,930.6	88.8	89.2	-55.47	-290.7	-2,949.3	326.4	176.9	149.41	2.184			
10,300.0	7,115.6	10,150.9	6,930.6	91.6	92.0	-55.54	-290.9	-3,049.3	327.0	172.8	154.15	2.121			

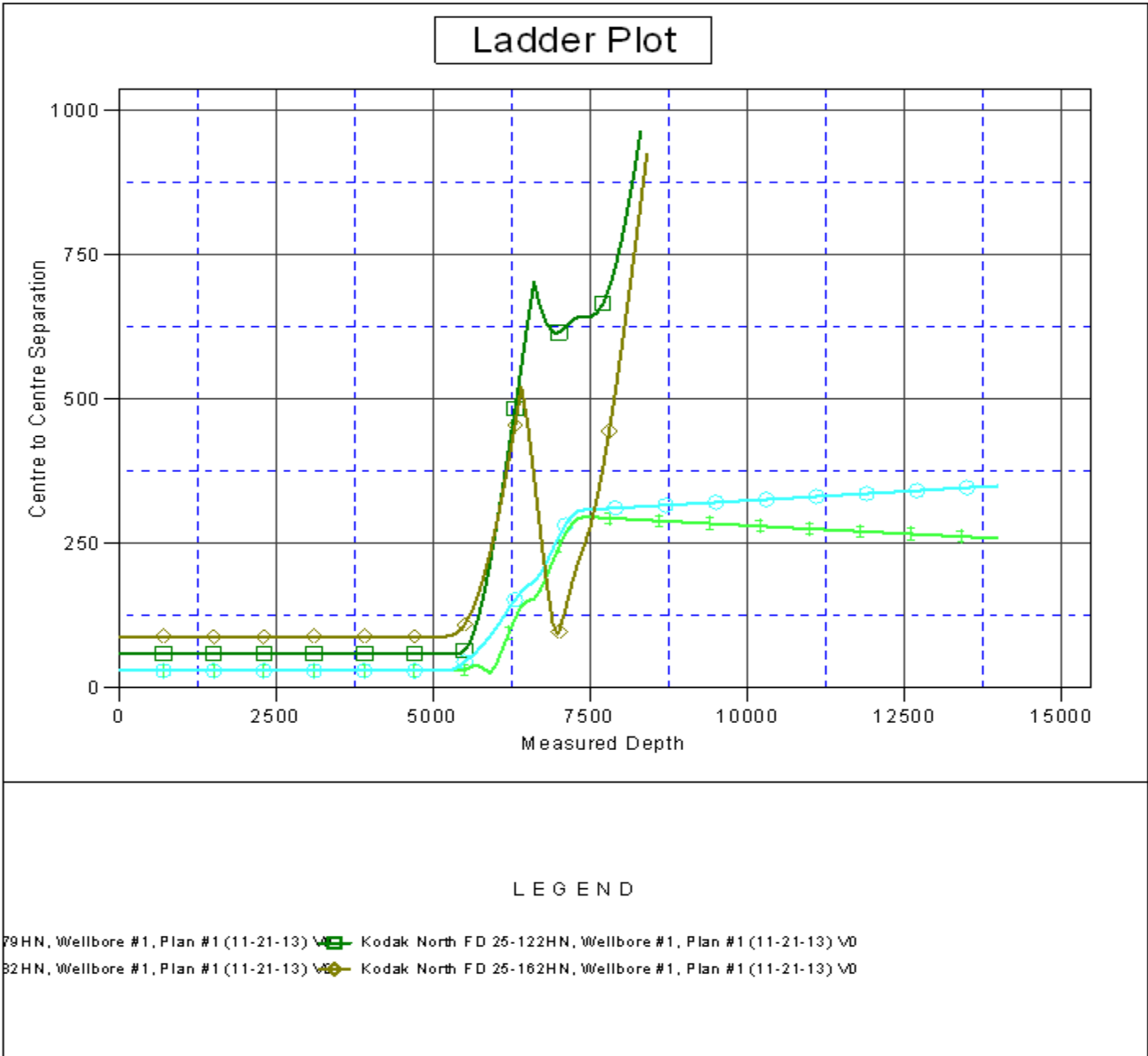
CC - Min centre to center distance or convergent point, SF - min separation factor, ES - min ellipse separation

Company:	Great Western	Local Co-ordinate Reference:	Well Kodak North FD 27-179HC
Project:	SEC.26-T6N-R67W	TVD Reference:	WELL @ 4776.6ft (RKB - 16.5')
Reference Site:	Kodak North Pad Sec.26-T6N-R67W	MD Reference:	WELL @ 4776.6ft (RKB - 16.5')
Site Error:	0.0ft	North Reference:	True
Reference Well:	Kodak North FD 27-179HC	Survey Calculation Method:	Minimum Curvature
Well Error:	0.0ft	Output errors are at	2.00 sigma
Reference Wellbore	Wellbore #1	Database:	Landmark
Reference Design:	Plan #1 (11-21-13)	Offset TVD Reference:	Offset Datum

Offset Design													Offset Site Error:	0.0 ft	
Survey Program: 0-MWD													Offset Well Error:		0.0 ft
Reference		Offset		Semi Major Axis			Distance						Warning		
Measured Depth (ft)	Vertical Depth (ft)	Measured Depth (ft)	Vertical Depth (ft)	Reference (ft)	Offset (ft)	Highside Toolface (°)	Offset Wellbore Centre +N/-S (ft)	+E/-W (ft)	Between Centres (ft)	Between Ellipses (ft)	Minimum Separation (ft)	Separation Factor			
10,400.0	7,115.6	10,250.9	6,930.6	94.4	94.7	-55.62	-291.0	-3,149.3	327.6	168.7	158.90	2.062			
10,500.0	7,115.6	10,350.9	6,930.6	97.1	97.5	-55.69	-291.2	-3,249.3	328.2	164.6	163.66	2.006			
10,600.0	7,115.6	10,450.9	6,930.6	99.9	100.3	-55.77	-291.4	-3,349.3	328.9	160.4	168.43	1.953			
10,700.0	7,115.6	10,550.9	6,930.6	102.7	103.0	-55.84	-291.5	-3,449.3	329.5	156.3	173.21	1.902			
10,800.0	7,115.6	10,650.9	6,930.6	105.4	105.8	-55.92	-291.7	-3,549.3	330.1	152.1	178.00	1.855			
10,900.0	7,115.6	10,750.9	6,930.6	108.2	108.6	-55.99	-291.8	-3,649.3	330.8	148.0	182.81	1.809			
11,000.0	7,115.6	10,850.9	6,930.6	111.0	111.4	-56.06	-292.0	-3,749.3	331.4	143.8	187.62	1.766			
11,100.0	7,115.6	10,950.9	6,930.6	113.8	114.1	-56.14	-292.1	-3,849.3	332.0	139.6	192.44	1.725			
11,200.0	7,115.6	11,050.9	6,930.6	116.6	116.9	-56.21	-292.3	-3,949.3	332.7	135.4	197.27	1.686			
11,300.0	7,115.6	11,150.9	6,930.6	119.3	119.7	-56.28	-292.5	-4,049.3	333.3	131.2	202.11	1.649			
11,400.0	7,115.6	11,250.9	6,930.6	122.1	122.5	-56.36	-292.6	-4,149.3	333.9	127.0	206.96	1.614			
11,500.0	7,115.6	11,350.9	6,930.6	124.9	125.3	-56.43	-292.8	-4,249.3	334.6	122.8	211.81	1.580			
11,600.0	7,115.6	11,450.9	6,930.6	127.7	128.0	-56.50	-292.9	-4,349.3	335.2	118.5	216.67	1.547			
11,700.0	7,115.6	11,550.9	6,930.6	130.5	130.8	-56.57	-293.1	-4,449.3	335.8	114.3	221.55	1.516			
11,800.0	7,115.6	11,650.9	6,930.6	133.3	133.6	-56.64	-293.2	-4,549.3	336.5	110.0	226.43	1.486	Level 3		
11,900.0	7,115.6	11,750.9	6,930.6	136.1	136.4	-56.72	-293.4	-4,649.3	337.1	105.8	231.31	1.457	Level 3		
12,000.0	7,115.6	11,850.9	6,930.6	138.8	139.2	-56.79	-293.6	-4,749.3	337.7	101.5	236.21	1.430	Level 3		
12,100.0	7,115.6	11,950.9	6,930.6	141.6	142.0	-56.86	-293.7	-4,849.3	338.4	97.3	241.11	1.403	Level 3		
12,200.0	7,115.6	12,050.9	6,930.6	144.4	144.8	-56.93	-293.9	-4,949.3	339.0	93.0	246.02	1.378	Level 3		
12,300.0	7,115.6	12,150.9	6,930.6	147.2	147.6	-57.00	-294.0	-5,049.3	339.7	88.7	250.94	1.354	Level 3		
12,400.0	7,115.6	12,250.9	6,930.6	150.0	150.4	-57.07	-294.2	-5,149.3	340.3	84.4	255.86	1.330	Level 3		
12,500.0	7,115.6	12,350.9	6,930.6	152.8	153.1	-57.14	-294.4	-5,249.3	340.9	80.2	260.79	1.307	Level 3		
12,600.0	7,115.6	12,450.9	6,930.6	155.6	155.9	-57.21	-294.5	-5,349.3	341.6	75.9	265.73	1.285	Level 3		
12,700.0	7,115.6	12,550.9	6,930.6	158.4	158.7	-57.28	-294.7	-5,449.3	342.2	71.6	270.68	1.264	Level 3		
12,800.0	7,115.6	12,650.9	6,930.6	161.2	161.5	-57.35	-294.8	-5,549.3	342.9	67.2	275.63	1.244	Level 2		
12,900.0	7,115.6	12,750.9	6,930.6	164.0	164.3	-57.41	-295.0	-5,649.3	343.5	62.9	280.58	1.224	Level 2		
13,000.0	7,115.6	12,850.9	6,930.6	166.8	167.1	-57.48	-295.1	-5,749.2	344.2	58.6	285.55	1.205	Level 2		
13,100.0	7,115.6	12,950.9	6,930.6	169.6	169.9	-57.55	-295.3	-5,849.2	344.8	54.3	290.52	1.187	Level 2		
13,200.0	7,115.6	13,050.9	6,930.6	172.4	172.7	-57.62	-295.5	-5,949.2	345.4	49.9	295.50	1.169	Level 2		
13,300.0	7,115.6	13,150.9	6,930.6	175.2	175.5	-57.69	-295.6	-6,049.2	346.1	45.6	300.48	1.152	Level 2		
13,400.0	7,115.6	13,250.9	6,930.6	178.0	178.3	-57.75	-295.8	-6,149.2	346.7	41.3	305.47	1.135	Level 2		
13,500.0	7,115.6	13,350.9	6,930.6	180.8	181.1	-57.82	-295.9	-6,249.2	347.4	36.9	310.46	1.119	Level 2		
13,600.0	7,115.6	13,450.9	6,930.6	183.6	183.9	-57.89	-296.1	-6,349.2	348.0	32.6	315.46	1.103	Level 2		
13,700.0	7,115.6	13,550.8	6,930.6	186.4	186.7	-57.95	-296.2	-6,449.2	348.7	28.2	320.47	1.088	Level 2		
13,800.0	7,115.6	13,650.8	6,930.6	189.2	189.5	-58.02	-296.4	-6,549.2	349.3	23.8	325.48	1.073	Level 2		
13,900.0	7,115.6	13,750.8	6,930.6	192.0	192.3	-58.09	-296.6	-6,649.2	350.0	19.5	330.50	1.059	Level 2		
13,974.7	7,115.6	13,825.5	6,930.6	194.0	194.4	-58.14	-296.7	-6,723.9	350.4	16.2	334.25	1.048	Level 2, SF		

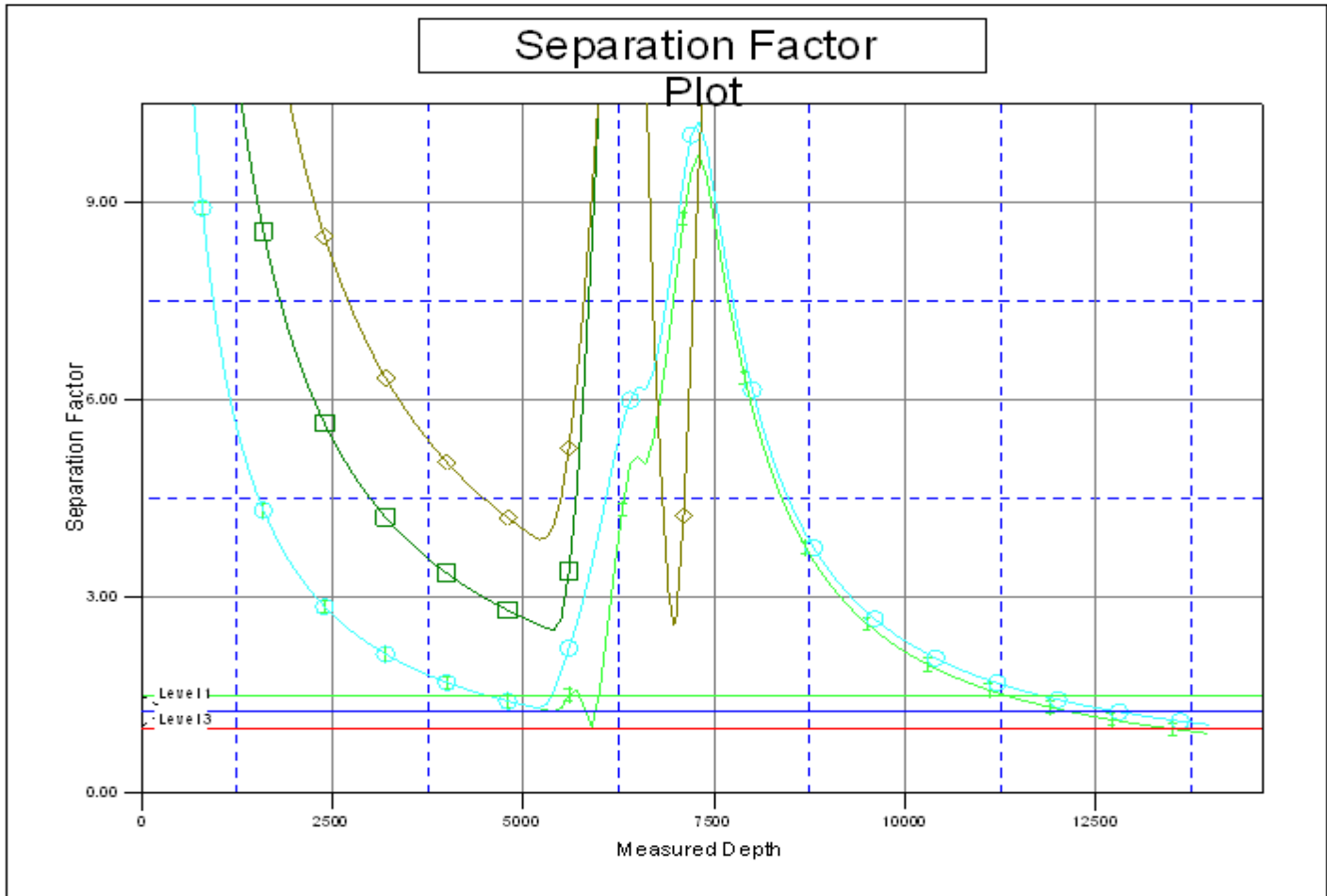
Company:	Great Western	Local Co-ordinate Reference:	Well Kodak North FD 27-179HC
Project:	SEC.26-T6N-R67W	TVD Reference:	WELL @ 4776.6ft (RKB - 16.5')
Reference Site:	Kodak North Pad Sec.26-T6N-R67W	MD Reference:	WELL @ 4776.6ft (RKB - 16.5')
Site Error:	0.0ft	North Reference:	True
Reference Well:	Kodak North FD 27-179HC	Survey Calculation Method:	Minimum Curvature
Well Error:	0.0ft	Output errors are at	2.00 sigma
Reference Wellbore	Wellbore #1	Database:	Landmark
Reference Design:	Plan #1 (11-21-13)	Offset TVD Reference:	Offset Datum

Reference Depths are relative to WELL @ 4776.6ft (RKB - 16.5') Coordinates are relative to: Kodak North FD 27-179HC
 Offset Depths are relative to Offset Datum Coordinate System is US State Plane 1983, Colorado Northern Zone
 Central Meridian is -105.500000 ° Grid Convergence at Surface is: 0.41°



Company:	Great Western	Local Co-ordinate Reference:	Well Kodak North FD 27-179HC
Project:	SEC.26-T6N-R67W	TVD Reference:	WELL @ 4776.6ft (RKB - 16.5')
Reference Site:	Kodak North Pad Sec.26-T6N-R67W	MD Reference:	WELL @ 4776.6ft (RKB - 16.5')
Site Error:	0.0ft	North Reference:	True
Reference Well:	Kodak North FD 27-179HC	Survey Calculation Method:	Minimum Curvature
Well Error:	0.0ft	Output errors are at	2.00 sigma
Reference Wellbore	Wellbore #1	Database:	Landmark
Reference Design:	Plan #1 (11-21-13)	Offset TVD Reference:	Offset Datum

Reference Depths are relative to WELL @ 4776.6ft (RKB - 16.5') Coordinates are relative to: Kodak North FD 27-179HC
 Offset Depths are relative to Offset Datum Coordinate System is US State Plane 1983, Colorado Northern Zone
 Central Meridian is -105.500000 ° Grid Convergence at Surface is: 0.41°



LEGEND

- 179HN, Wellbore #1, Plan #1 (11-21-13) Kodak North FD 25-122HN, Wellbore #1, Plan #1 (11-21-13)
- 132HN, Wellbore #1, Plan #1 (11-21-13) Kodak North FD 25-162HN, Wellbore #1, Plan #1 (11-21-13)