

1801 Broadway
Suite 500
Denver, Colorado 80202



Callie Fiddes
Regulatory Technician
Tel: 303.398.0550
E-mail: cfiddes@gvogco.com

March 24, 2014

Colorado Oil and Gas Conservation Commission
1120 Lincoln Street, Suite 801
Denver, Colorado 80203

RE: **Proposed Wellbore Spacing Unit**
Kodak North FD 27-182HN

Niobrara New Drill
Township 6 North, Range 67 West, 6th P.M.
Section 26
Weld County, Colorado

Dear Director:

Great Western Operating Company, LLC is planning to drill the above captioned well in accordance with the provisions of COGCC Rule 318(l)(e)(2).

Great Western proposed wellbore spacing unit consists of:

S2NW, N2SW Sec 26
S2N2, N2S2 Sec 27

Great Western Operating Company, LLC respectfully requests that the COGCC review the enclosed map illustrating the proposed wellbore spacing unit.

Respectfully,

Callie Fiddes

Callie Fiddes
Regulatory Technician
Great Western Operating Company, LLC

S2NW, N2SW Sec 26 S2N2, N2S2 Sec 27

T6N, R67W, 6th P.M.

GREAT WESTERN OIL & GAS COMPANY

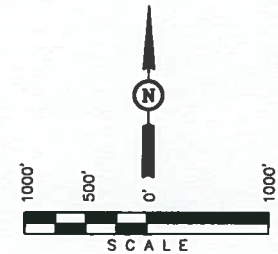
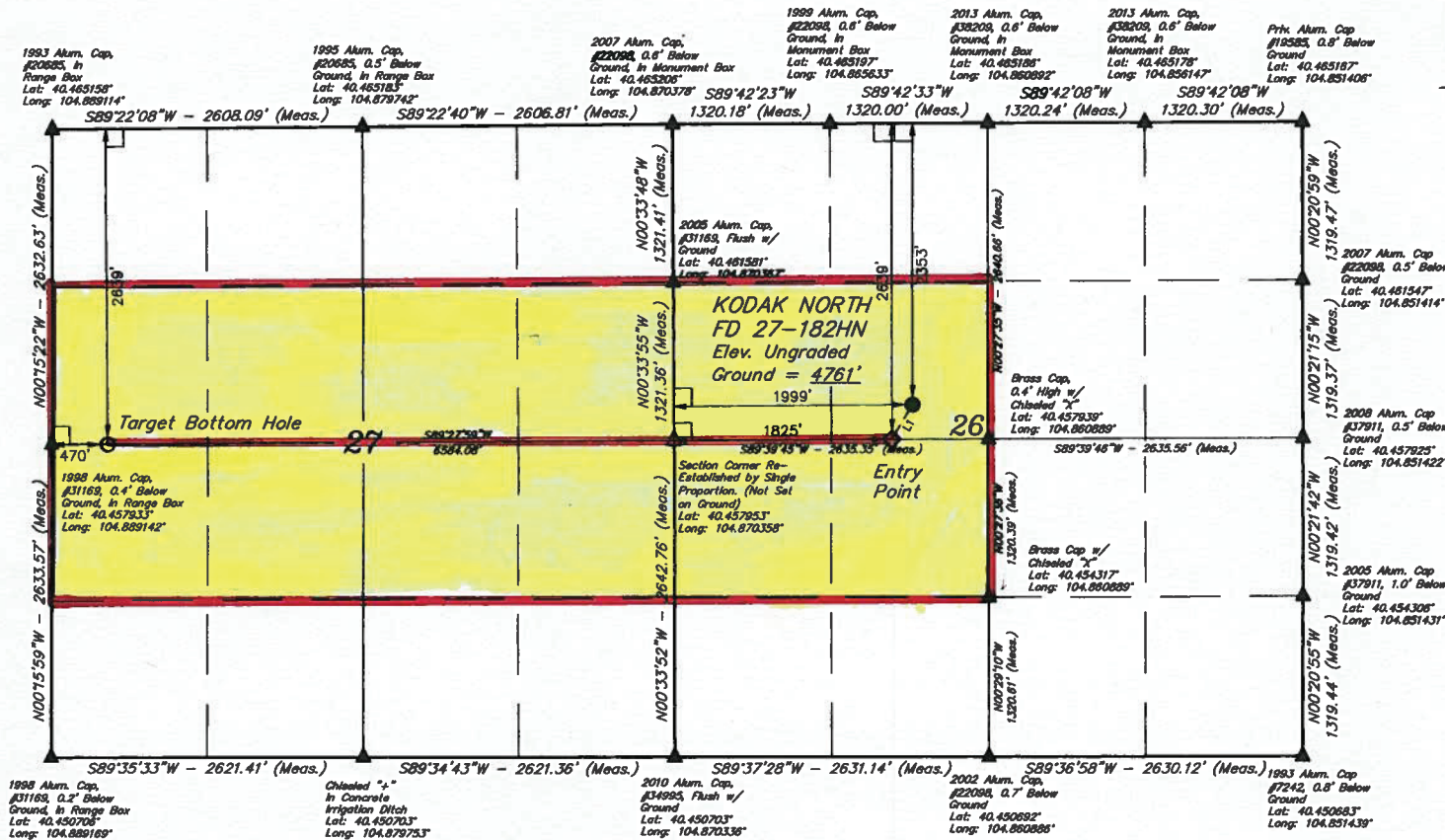
Well location, KODAK NORTH FD 27-182HN, located as shown in the SE 1/4 NW 1/4 of Section 26, T6N, R67W, 6th P.M., Weld County, Colorado.

BASIS OF ELEVATION

USGS COOPERATIVE BASE NETWORK CONTROL STATION, DESIGNATION 'VERMILYEA'. NGS DATA SHEET LISTS THE NAVD 88 ELEVATION AS BEING 5026 FEET

BASIS OF BEARINGS

BASIS OF BEARINGS IS A G.P.S. OBSERVATION.



LINE TABLE

LINE	DIRECTION	LENGTH
L1	S30°47'04"W	334.47'

CERTIFICATE

THIS IS TO CERTIFY THAT THE ABOVE MAP WAS PREPARED FROM FIELD NOTES OF ACTUAL SURVEYING DONE BY ME OR UNDER MY SUPERVISION AND THAT THE SAME IS TRUE AND CORRECT TO THE BEST OF MY KNOWLEDGE AND BELIEF.

REGISTERED LAND SURVEYOR
REGISTRATION NO. 26285
STATE OF COLORADO
JULY 13

LEGEND:

- └─ = 90° SYMBOL
- = PROPOSED WELL HEAD.
- = TARGET BOTTOM HOLE.
- ◇ = ENTRY POINT.
- ▲ = SECTION CORNERS LOCATED.
- △ = SECTION CORNERS RE-ESTABLISHED. (Not Set on Ground.)

PDOP = 1.1

NAVD 83 (TARGET BOTTOM HOLE)	NAVD 83 (ENTRY POINT)	NAVD 83 (SURFACE LOCATION)
LATITUDE = 40°27'28.51" (40.457819)	LATITUDE = 40°27'28.62" (40.457850)	LATITUDE = 40°27'31.45" (40.458738)
LONGITUDE = 104°53'14.83" (104.887453)	LONGITUDE = 104°51'48.65" (104.863800)	LONGITUDE = 104°51'47.44" (104.863178)
NAVD 27 (TARGET BOTTOM HOLE)	NAVD 27 (ENTRY POINT)	NAVD 27 (SURFACE LOCATION)
LATITUDE = 40°27'28.55" (40.457836)	LATITUDE = 40°27'28.68" (40.457888)	LATITUDE = 40°27'31.51" (40.458753)
LONGITUDE = 104°53'12.93" (104.888225)	LONGITUDE = 104°51'47.79" (104.863275)	LONGITUDE = 104°51'45.54" (104.862850)

UNTAH ENGINEERING & LAND SURVEYING			
85 SOUTH 200 EAST - VERNAL, UTAH 84078			
(435) 789-1017			
SCALE 1" = 1000'	DATE SURVEYED: 10-21-13	DATE DRAWN: 10-30-13	PARTY D.N. C.M. G.W. J.W.
WEATHER COOL	REFERENCES G.L.O. PLAT	FILE GREAT WESTERN OIL & GAS COMPANY	