

T6N, R67W, 6th P.M.

GREAT WESTERN OIL & GAS COMPANY

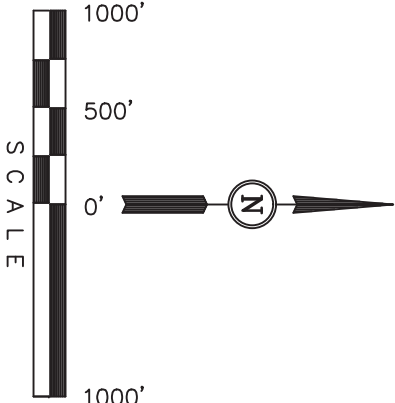
Well location, KODAK NORTH FD 27-182HN, located as shown in the SE 1/4 NW 1/4 of Section 26, T6N, R67W, 6th P.M., Weld County, Colorado.

BASIS OF ELEVATION

USGS COOPERATIVE BASE NETWORK CONTROL STATION, DESIGNATION "VERMILYEA". NGS DATA SHEET LISTS THE NAVD 88 ELEVATION AS BEING 5026 FEET

BASIS OF BEARINGS

BASIS OF BEARINGS IS A C.P.S. OBSERVATION.



LINE TABLE		
LINE	DIRECTION	LENGTH
L1	S30°47'04"W	334.47'

THIS IS TO CERTIFY THAT THE ABOVE IS A TRUE AND CORRECT COPY OF THE ORIGINAL SURVEY RECORDS AND THAT THE SAME HAVE BEEN REVIEWED AND CORRECTED TO THE BEST OF MY KNOWLEDGE AND BELIEF.

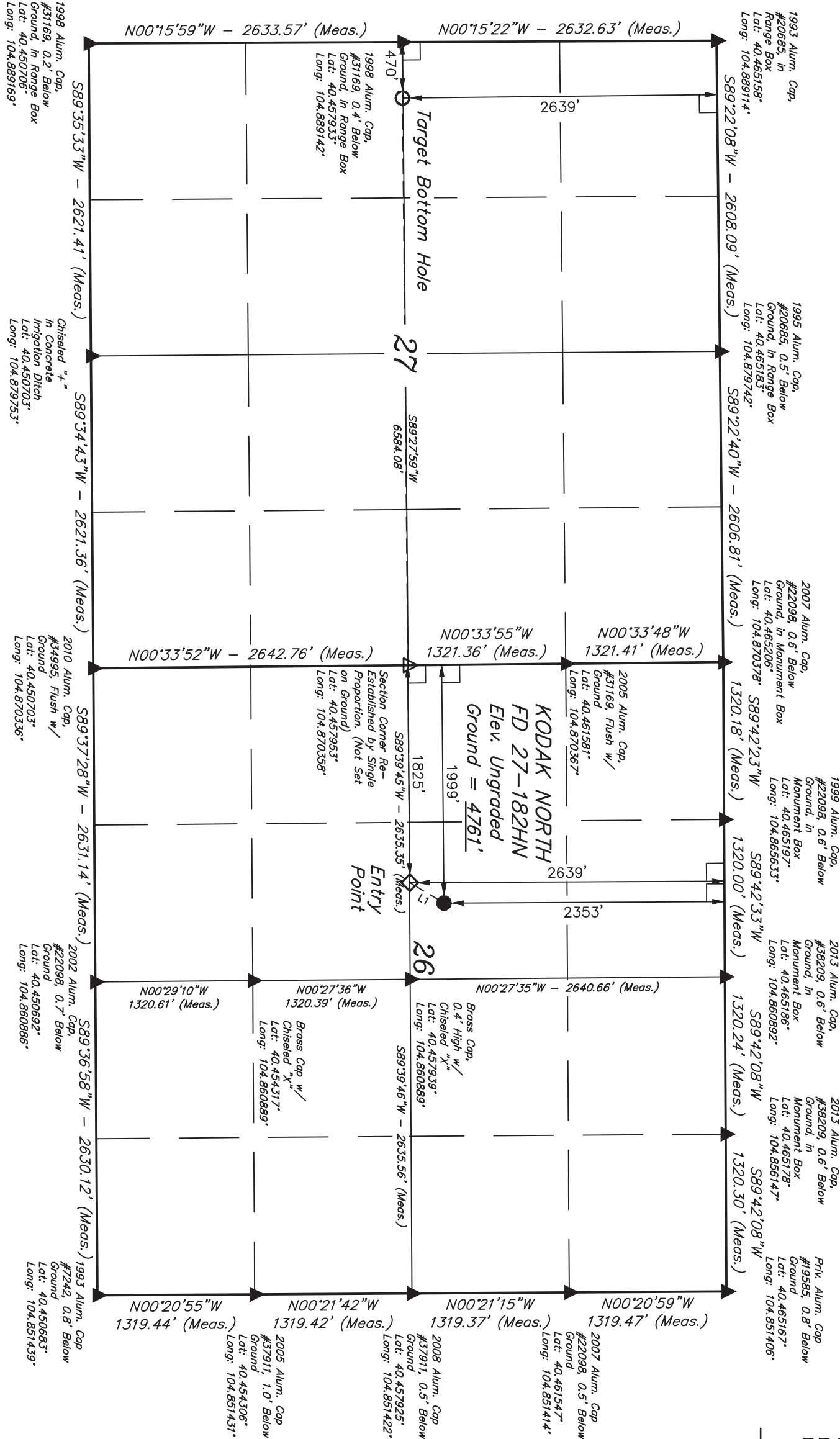


UNTAH ENGINEERING & LAND SURVEYING

85 SOUTH 200 EAST - VERNAL, UTAH 84078

(435) 789-1017

PDOP = 1.1	
LATITUDE = 40°27'28.51" (40.457919)	LATITUDE = 40°27'28.62" (40.457950)
LONGITUDE = 104°53'14.83" (104.887453)	LONGITUDE = 104°51'49.68" (104.863800)
NAD 83 (SURFACE LOCATION)	
LATITUDE = 40°27'28.58" (40.457939)	LATITUDE = 40°27'31.51" (40.458753)
LONGITUDE = 104°53'12.93" (104.886925)	LONGITUDE = 104°51'45.54" (104.862650)



LEGEND:

- └─ = 90° SYMBOL
- = PROPOSED WELL HEAD.
- = TARGET BOTTOM HOLE.
- ◇ = ENTRY POINT.
- ▲ = SECTION CORNERS LOCATED.
- △ = SECTION CORNERS RE-ESTABLISHED. (Not Set on Ground.)