

T6N, R67W, 6th P.M.

GREAT WESTERN OIL & GAS COMPANY

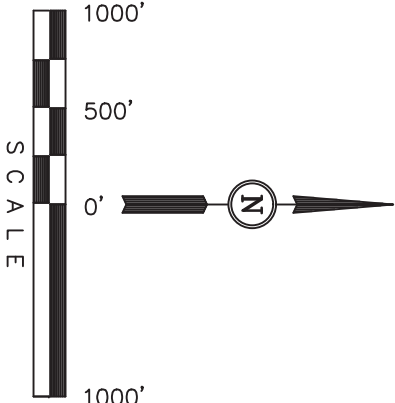
Well location, KODAK NORTH FD 27-062HN, located as shown in the SE 1/4 NW 1/4 of Section 26, T6N, R67W, 6th P.M., Weld County, Colorado.

BASIS OF ELEVATION

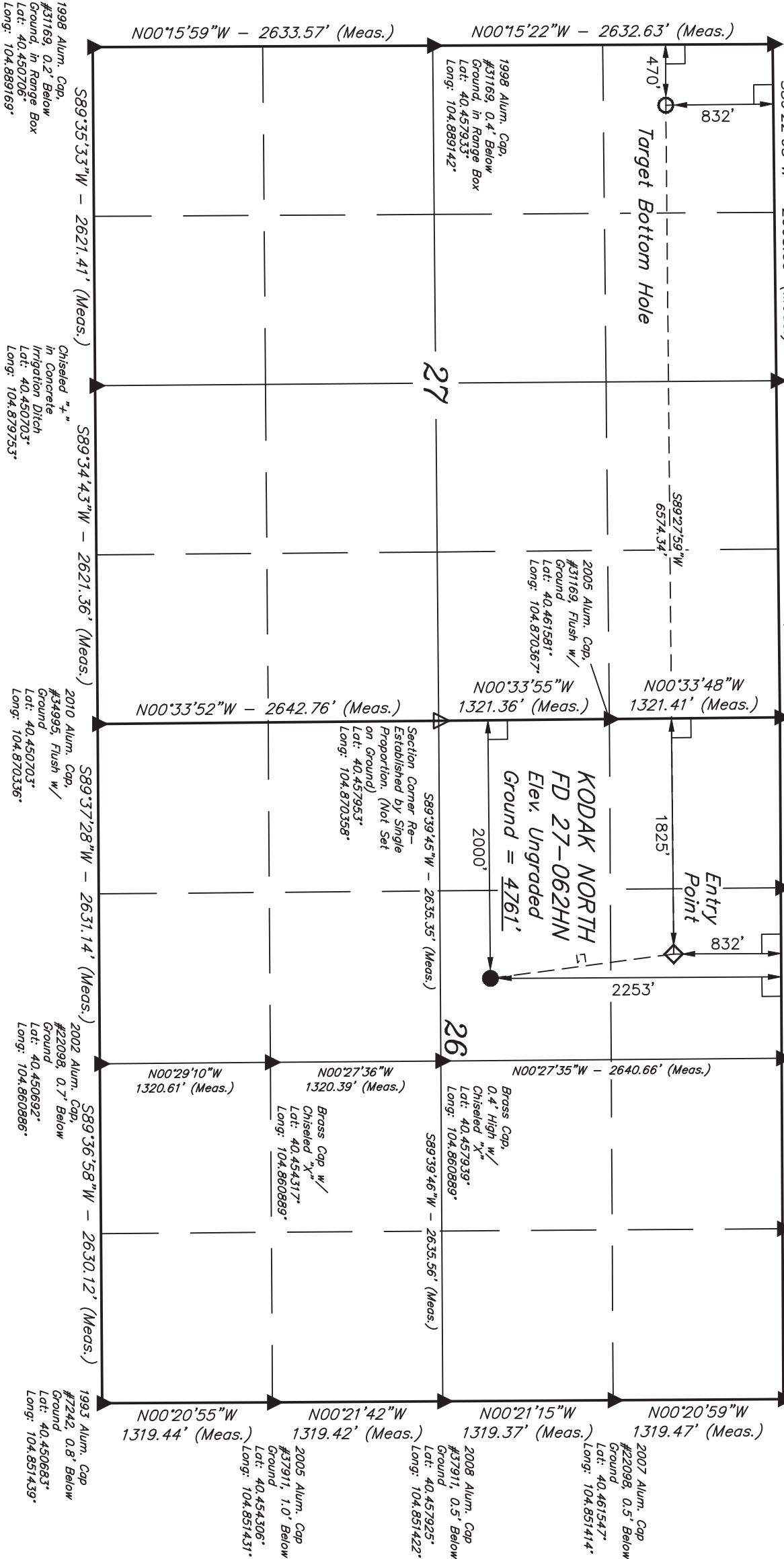
USGS COOPERATIVE BASE NETWORK CONTROL STATION, DESIGNATION 'VERMILYEA'. NGS DATA SHEET LISTS THE NAVD 88 ELEVATION AS BEING 5026 FEET

BASIS OF BEARINGS

BASIS OF BEARINGS IS A C.P.S. OBSERVATION.



LINE TABLE		
LINE	DIRECTION	LENGTH
L1	N07°34'19"W	1432.05'



LEGEND:

- └ = 90° SYMBOL
- = PROPOSED WELL HEAD.
- = TARGET BOTTOM HOLE.
- ◇ = ENTRY POINT.
- ▲ = SECTION CORNERS LOCATED.
- △ = SECTION CORNERS RE-ESTABLISHED. (Not Set on Ground.)

NAD 83 (TARGET BOTTOM HOLE)		NAD 83 (ENTRY POINT)		NAD 83 (SURFACE LOCATION)	
LATITUDE = 40°27'46.36" (40.462878)		LATITUDE = 40°27'46.47" (40.462908)		LATITUDE = 40°27'32.44" (40.459011)	
LONGITUDE = 104°53'14.76" (104.887433)		LONGITUDE = 104°51'49.73" (104.863814)		LONGITUDE = 104°51'47.43" (104.863175)	
NAD 27 (TARGET BOTTOM HOLE)		NAD 27 (ENTRY POINT)		NAD 27 (SURFACE LOCATION)	
LATITUDE = 40°27'46.43" (40.462897)		LATITUDE = 40°27'46.54" (40.462928)		LATITUDE = 40°27'32.50" (40.459028)	
LONGITUDE = 104°53'12.86" (104.886906)		LONGITUDE = 104°51'47.83" (104.863286)		LONGITUDE = 104°51'45.54" (104.862650)	

PDOP = 1.6	
------------	--

UTAH ENGINEERING & LAND SURVEYING

85 SOUTH 200 EAST - VERNAL, UTAH 84078

(435) 789-1017

SCALE	1" = 1000'	DATE SURVEYED:	10-21-13	DATE DRAWN:	10-30-13
PARTY	D.N. C.M. G.W. J.W.	REFERENCES	G.L.O. PLAT		
WEATHER	COOL	FILE	GREAT WESTERN OIL & GAS COMPANY		

CERTIFICATE OF RECORD REGISTRATION

THIS IS TO CERTIFY THAT THE ABOVE IS A TRUE AND CORRECT COPY OF THE FIELD NOTES OF ACTUAL SURVEY MADE BY ME OR UNDER MY SUPERVISION AND THAT THE SAME ARE TRUE AND CORRECT TO THE BEST OF MY KNOWLEDGE AND BELIEF.

2013 OCT 28 2013

REGISTERED LAND SURVEYOR REGISTRATION NO. 28285 STATE OF UTAH

STATE OF UTAH DIVISION OF LAND SURVEYING