

1801 Broadway
Suite 500
Denver, Colorado 80202



Callie Fiddes
Regulatory Technician
Tel: 303.398.0550
E-mail: cfiddes@gwogco.com

March 19, 2014

Colorado Oil and Gas Conservation Commission
1120 Lincoln Street, Suite 801
Denver, Colorado 80203

RE: **Proposed Wellbore Spacing Unit**
Kodak North FD 25-119HC

Codell New Drill
Township 6 North, Range 67 West, 6th P.M.
Section 26
Weld County, Colorado

Dear Director:

Great Western Operating Company, LLC is planning to drill the above captioned well in accordance with the provisions of COGCC Rule 318(l)e(2).

Great Western proposed wellbore spacing unit consists of:

N2 Sec 25
NE4 Sec 26
E2NW4 Sec 26
560 Acres

Great Western Operating Company, LLC respectfully requests that the COGCC review the enclosed map illustrating the proposed wellbore spacing unit.

Respectfully,

Callie Fiddes

Callie Fiddes
Regulatory Technician
Great Western Operating Company, LLC

76N, R67W, 6th P.M.

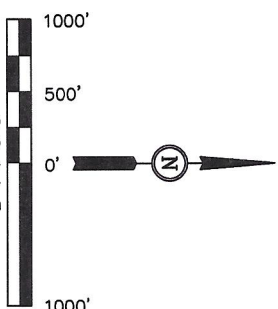
GREAT WESTERN OIL & GAS COMPANY
 Well location, KODAK NORTH FD 25-119HC,
 located as shown in the SE 1/4 NW 1/4 of
 Section 26, T6N, R67W, 6th P.M., Weld County,
 Colorado.

BASIS OF ELEVATION

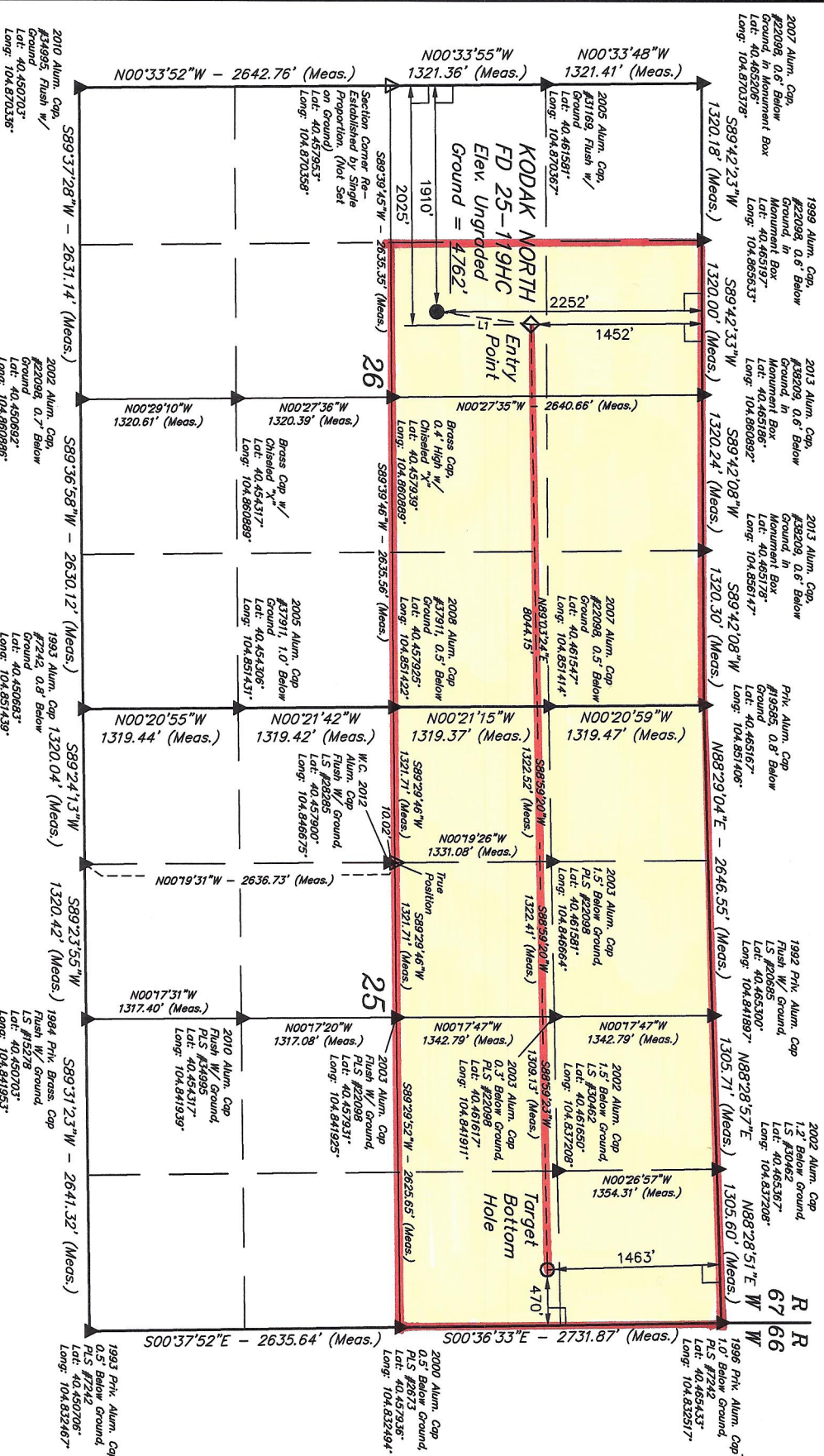
USGS COOPERATIVE BASE NETWORK CONTROL STATION,
 DESIGNATION VERMILYEA, NGS DATA SHEET LISTS THE
 NAVD 88 ELEVATION AS BEING 5026 FEET

BASIS OF BEARINGS

BASIS OF BEARINGS IS A G.P.S. OBSERVATION.



LINE	DIRECTION	LENGTH
L1	N07°38'13"E	907.94'



CERTIFICATE OF RECORD REGISTRATION
 THIS IS TO CERTIFY THAT THE ABOVE COPY WAS PREPARED FROM
 FIELD NOTES OF ACTUAL SURVEY MADE BY ME OR UNDER MY
 SUPERVISION AND THAT THE SAME ARE TRUE AND CORRECT TO THE
 BEST OF MY KNOWLEDGE AND BELIEF.
 REGISTERED LAND SURVEYOR
 REGISTRATION NO. 29295
 STATE OF COLORADO
 VITAL LAND SURVEY

UNTAH ENGINEERING & LAND SURVEYING
 85 SOUTH 200 EAST - VERNAL, UTAH 84078
 (435) 789-1017

- LEGEND:
- └─ = 90° SYMBOL
 - = PROPOSED WELL HEAD.
 - = TARGET BOTTOM HOLE.
 - ◇ = ENTRY POINT.
 - ▲ = SECTION CORNERS LOCATED.
 - △ = SECTION CORNERS RE-ESTABLISHED. (Not Set on Ground.)

NAD 83 (TARGET BOTTOM HOLE)	NAD 83 (ENTRY POINT)	NAD 83 (SURFACE LOCATION)
LATITUDE = 40°27'41.02" (40.461394)	LATITUDE = 40°27'40.34" (40.461206)	LATITUDE = 40°27'32.44" (40.458011)
LONGITUDE = 104°50'03.10" (104.834194)	LONGITUDE = 104°51'47.13" (104.863092)	LONGITUDE = 104°51'48.60" (104.863300)
NAD 27 (TARGET BOTTOM HOLE)	NAD 27 (ENTRY POINT)	NAD 27 (SURFACE LOCATION)
LATITUDE = 40°27'41.09" (40.461414)	LATITUDE = 40°27'40.41" (40.461225)	LATITUDE = 40°27'32.51" (40.458031)
LONGITUDE = 104°50'01.20" (104.833867)	LONGITUDE = 104°51'46.23" (104.862564)	LONGITUDE = 104°51'46.70" (104.862972)

PDOP = 1.8	SCALE 1" = 1000'
DATE SURVEYED: 10-21-13	DATE DRAWN: 10-30-13
PARTY D.N. C.M. G.W. J.W.	REFERENCES G.L.O. PLAT
WEATHER COOL	FILE GREAT WESTERN OIL & GAS COMPANY