

T6N, R67W, 6th P.M.

GREAT WESTERN OIL & GAS COMPANY

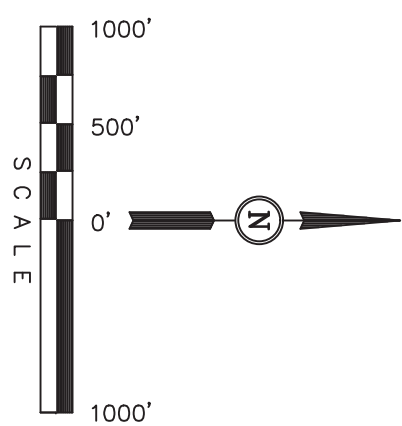
Well location, KODAK NORTH FD 25-119HC, located as shown in the SE 1/4 NW 1/4 of Section 26, T6N, R67W, 6th P.M., Weld County, Colorado.

BASIS OF ELEVATION

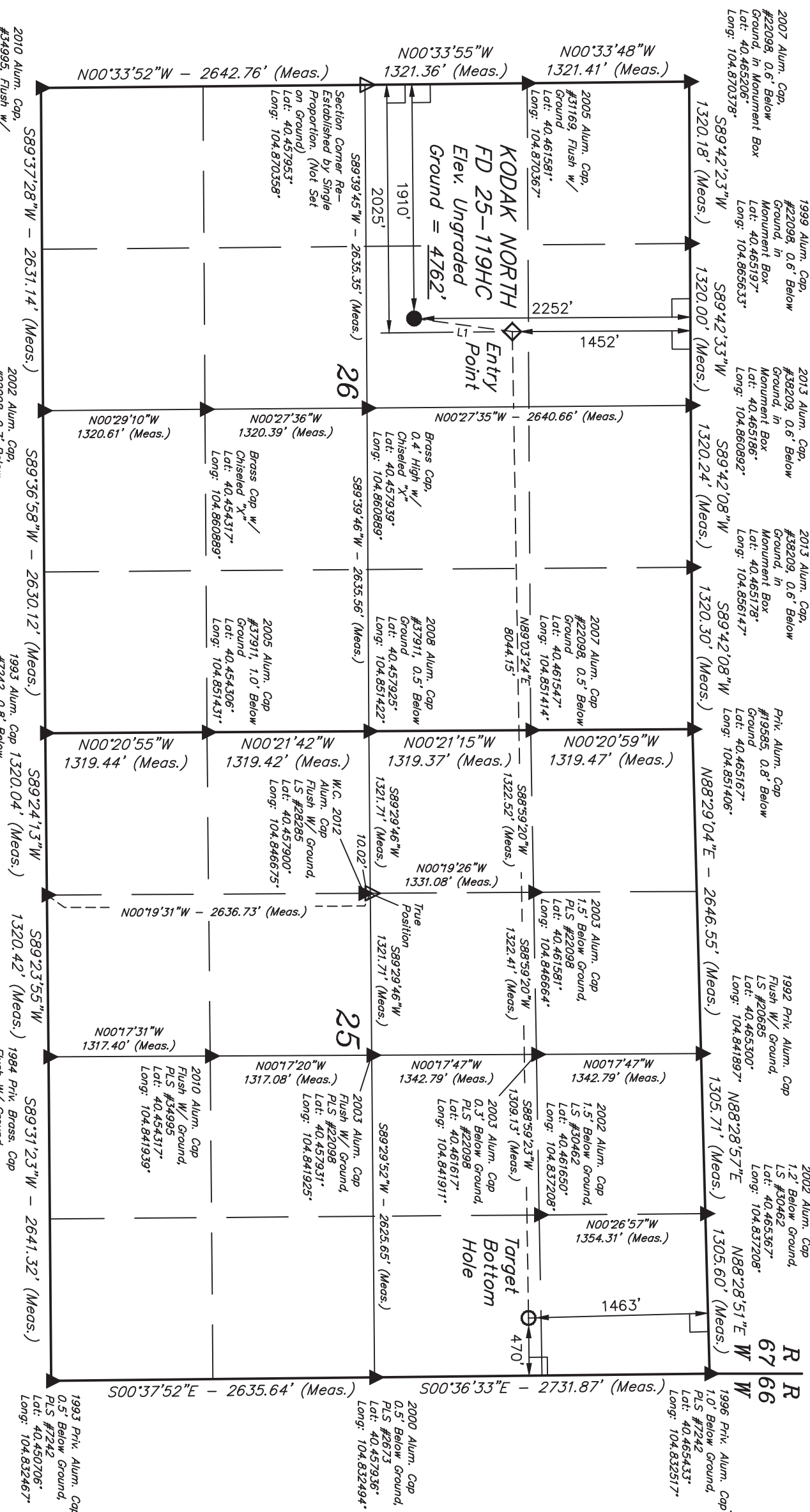
USGS COOPERATIVE BASE NETWORK CONTROL STATION, DESIGNATION 'VERMILYEA'. NGS DATA SHEET LISTS THE NAVD 88 ELEVATION AS BEING 5026 FEET

BASIS OF BEARINGS

BASIS OF BEARINGS IS A C.P.S. OBSERVATION.



| LINE | DIRECTION | LENGTH |
|------|-------------|---------|
| L1 | N07°38'13"E | 807.94' |



2010 Alum. Cap, #34995, Flush w/ Ground, Lat: 40.450703°, Long: 104.870336°

2002 Alum. Cap, #22098, 0.7' Below Ground, Lat: 40.450692°, Long: 104.860886°

2013 Alum. Cap, #38209, 0.6' Below Ground, in Monument Box, Lat: 40.465198°, Long: 104.860892°

2013 Alum. Cap, #38209, 0.6' Below Ground, in Monument Box, Lat: 40.465178°, Long: 104.856147°

2007 Alum. Cap #22098, 0.5' Below Ground, Lat: 40.461547°, Long: 104.851414°

2008 Alum. Cap #37911, 0.5' Below Ground, Lat: 40.457925°, Long: 104.851422°

2005 Alum. Cap #37911, 1.0' Below Ground, Lat: 40.454306°, Long: 104.851431°

1993 Alum. Cap 1320.04' (Meas.)

1993 Alum. Cap 1320.04' (Meas.)

1992 Priv. Alum. Cap 1.2' Below Ground, LS #20685, Lat: 40.465300°, Long: 104.841897°

2002 Alum. Cap 1.2' Below Ground, LS #30462, Lat: 40.465367°, Long: 104.837208°

2002 Alum. Cap 1.5' Below Ground, LS #30462, Lat: 40.461650°, Long: 104.837208°

1996 Priv. Alum. Cap 1.0' Below Ground, PLS #2242, Lat: 40.465433°, Long: 104.832517°

2000 Alum. Cap 0.5' Below Ground, PLS #2673, Lat: 40.457936°, Long: 104.832494°

1993 Priv. Alum. Cap 0.5' Below Ground, PLS #2242, Lat: 40.450706°, Long: 104.832467°

LEGEND:

- └ = 90° SYMBOL
- = PROPOSED WELL HEAD.
- = TARGET BOTTOM HOLE.
- ◇ = ENTRY POINT.
- ▣ = SECTION CORNERS LOCATED.
- △ = SECTION CORNERS RE-ESTABLISHED. (Not Set on Ground.)

| NAD 83 (TARGET BOTTOM HOLE) | | NAD 83 (ENTRY POINT) | | NAD 83 (SURFACE LOCATION) | |
|-----------------------------|--------------|---------------------------|--------------|---------------------------|--------------|
| LATITUDE = 40°27'41.02" | (40.461394) | LATITUDE = 40°27'40.34" | (40.461206) | LATITUDE = 40°27'32.44" | (40.459011) |
| LONGITUDE = 104°50'03.10" | (104.834194) | LONGITUDE = 104°51'47.13" | (104.863092) | LONGITUDE = 104°51'48.60" | (104.863500) |
| NAD 27 (TARGET BOTTOM HOLE) | | NAD 27 (ENTRY POINT) | | NAD 27 (SURFACE LOCATION) | |
| LATITUDE = 40°27'41.09" | (40.461414) | LATITUDE = 40°27'40.41" | (40.461225) | LATITUDE = 40°27'32.51" | (40.459031) |
| LONGITUDE = 104°50'01.20" | (104.833667) | LONGITUDE = 104°51'45.23" | (104.862564) | LONGITUDE = 104°51'46.70" | (104.862972) |

UNTAH ENGINEERING & LAND SURVEYING
85 SOUTH 200 EAST - VERNAL, UTAH 84078
 (435) 789-1017

SCALE 1" = 1000'

DATE SURVEYED: 10-21-13 DATE DRAWN: 10-30-13

PARTY D.N. C.M. G.W. J.W. REFERENCES G.L.O. PLAT

WEATHER COOL FILE GREAT WESTERN OIL & GAS COMPANY

THIS IS TO CERTIFY THAT THE ABOVE IS A TRUE AND CORRECT COPY OF THE ORIGINAL SURVEY RECORD AS FILED IN THE PUBLIC RECORDS OF THE STATE OF UTAH. I, THE SURVEYOR, HAVE PERSONALLY EXAMINED THE ORIGINAL SURVEY RECORD AND THE COPY HEREON IS A TRUE AND CORRECT COPY OF THE ORIGINAL SURVEY RECORD.

CERTIFICATE OF RECORD REGISTRATION

REGISTERED LAND SURVEYOR REGISTRATION NO. 28285 STATE OF UTAH