

# Great Western

Well Name: **Kodak North FD 25-119HC**

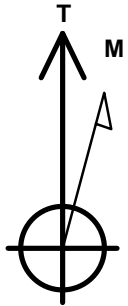
Surface Location: Kodak North Pad Sec.26-T6N-R67W  
 North American Datum 1983, US State Plane 1983, Colorado Northern Zone

Ground Elevation: 4760.1

+N/-S	+E/-W	Northing	Easting	Latitude	Longitude	Slot
0.0	0.0	1410693.67	3177116.01	40.459011	-104.863500	
RKB - 16.5' WELL @ 4776.6ft (RKB - 16.5')						

## WELLBORE TARGET DETAILS

Name	TVD	+N/-S	+E/-W	Shape
SHL 2252'FNL & 1910'FWL, Sec.26	1.0	0.0	0.0	Point
BHL 1463'FNL & 470'FEL, Sec.25	7108.6	869.6	8154.9	Point
Entry Pt. 1502'FNL & 2025'FWL, Sec.26	7108.6	749.7	113.5	Point



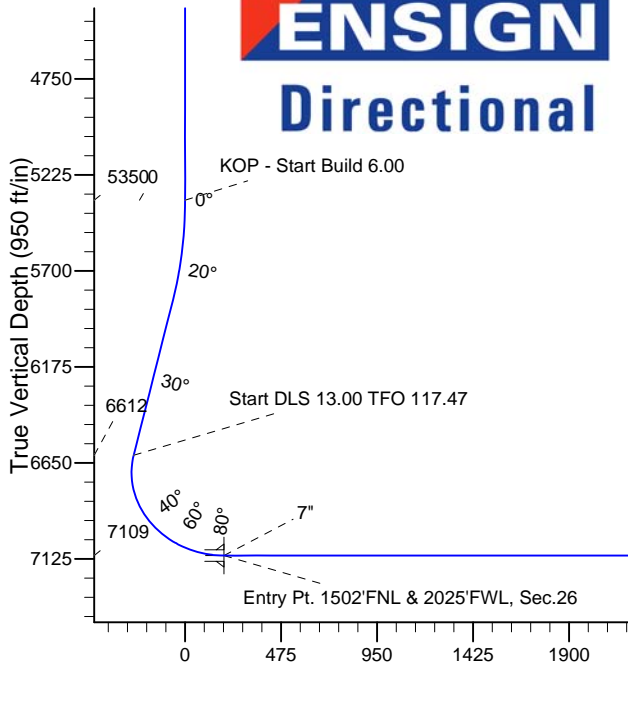
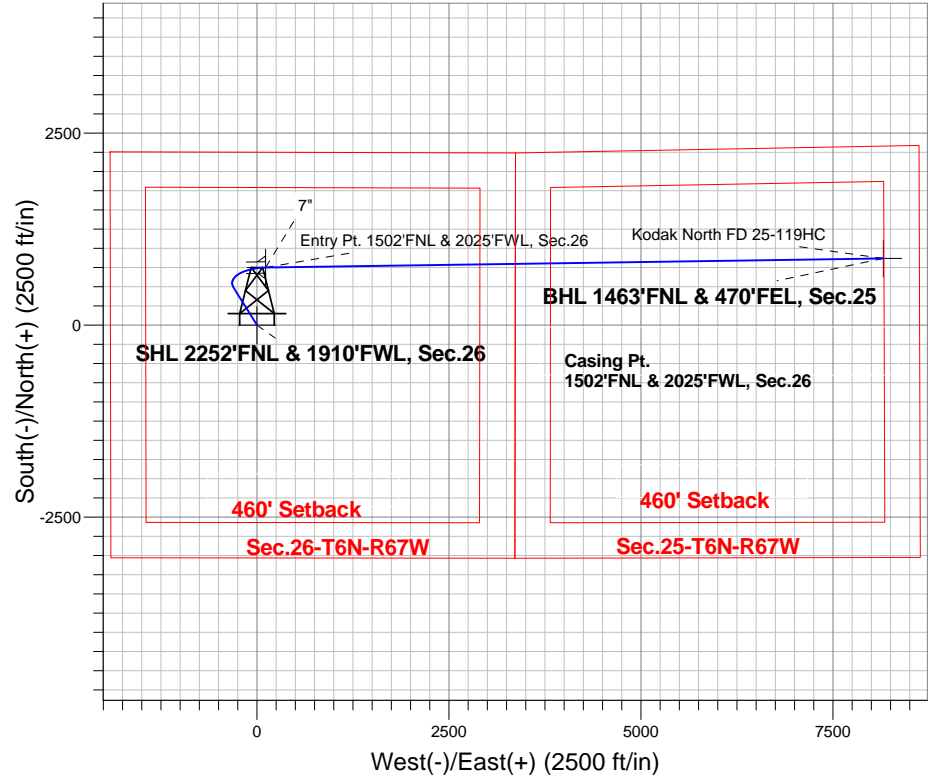
Azimuths to True North  
 Magnetic North: 8.59°

Magnetic Field  
 Strength: 52895.6snT  
 Dip Angle: 67.00°  
 Date: 11/21/2013  
 Model: IGRF2010

Kodak North Pad Sec.26-T6N-R67W  
 Kodak North FD 25-119HC  
 Plan #1 (11-21-13)  
 13:37, November 22 2013

### ANNOTATIONS

TVD	MD	Annotation
5350.0	5350.0	KOP - Start Build 6.00
6611.9	6757.4	Start DLS 13.00 TFO 117.47
7108.6	15607.5	TD at 15607.5



### SECTION DETAILS

Sec	MD	Inc	Azi	TVD	+N/-S	+E/-W	DLeg	TFace	VSec	Target
1	0.0	0.00	0.00	0.0	0.0	0.0	0.00	0.00	0.0	
2	5350.0	0.00	0.00	5350.0	0.0	0.0	0.00	0.00	0.0	
3	5852.9	30.17	328.12	5829.9	109.9	-68.3	6.00	328.12	-56.3	
4	6757.4	30.17	328.12	6611.9	495.9	-308.4	0.00	0.00	-254.1	
5	7565.2	90.00	89.14	7108.6	749.7	113.5	13.00	117.47	192.4	Entry Pt. 1502'FNL & 2025'FWL, Sec.26
6	7565.6	90.00	89.15	7108.6	749.7	114.0	1.43	90.00	192.8	
7	15607.5	90.00	89.15	7108.6	869.6	8154.9	0.00	0.00	8201.2	BHL 1463'FNL & 470'FEL, Sec.25

BHL 1463'FNL & 470'FEL, Sec.25

TD at 15607.5

Vertical Section at 83.91° (950 ft/in)



## **Great Western**

**SEC.26-T6N-R67W**

**Kodak North Pad Sec.26-T6N-R67W**

**Kodak North FD 25-119HC**

**Wellbore #1**

**Plan: Plan #1 (11-21-13)**

## **Standard Planning Report**

**22 November, 2013**

<b>Database:</b>	Landmark	<b>Local Co-ordinate Reference:</b>	Well Kodak North FD 25-119HC
<b>Company:</b>	Great Western	<b>TVD Reference:</b>	WELL @ 4776.6ft (RKB - 16.5')
<b>Project:</b>	SEC.26-T6N-R67W	<b>MD Reference:</b>	WELL @ 4776.6ft (RKB - 16.5')
<b>Site:</b>	Kodak North Pad Sec.26-T6N-R67W	<b>North Reference:</b>	True
<b>Well:</b>	Kodak North FD 25-119HC	<b>Survey Calculation Method:</b>	Minimum Curvature
<b>Wellbore:</b>	Wellbore #1		
<b>Design:</b>	Plan #1 (11-21-13)		

<b>Project</b>	SEC.26-T6N-R67W, Weld County, Colorado		
<b>Map System:</b>	US State Plane 1983	<b>System Datum:</b>	Mean Sea Level
<b>Geo Datum:</b>	North American Datum 1983		Using Well Reference Point
<b>Map Zone:</b>	Colorado Northern Zone		Using geodetic scale factor

<b>Site</b>	Kodak North Pad Sec.26-T6N-R67W				
<b>Site Position:</b>		<b>Northing:</b>	1,410,693.08 ft	<b>Latitude:</b>	40.459011
<b>From:</b>	Lat/Long	<b>Easting:</b>	3,177,026.41 ft	<b>Longitude:</b>	-104.863822
<b>Position Uncertainty:</b>	0.0 ft	<b>Slot Radius:</b>	"	<b>Grid Convergence:</b>	0.41 °

<b>Well</b>	Kodak North FD 25-119HC					
<b>Well Position</b>	<b>+N/-S</b>	0.0 ft	<b>Northing:</b>	1,410,693.67 ft	<b>Latitude:</b>	40.459011
	<b>+E/-W</b>	89.6 ft	<b>Easting:</b>	3,177,116.01 ft	<b>Longitude:</b>	-104.863500
<b>Position Uncertainty</b>		0.0 ft	<b>Wellhead Elevation:</b>	ft	<b>Ground Level:</b>	4,760.1 ft

<b>Wellbore</b>	Wellbore #1				
<b>Magnetics</b>	<b>Model Name</b>	<b>Sample Date</b>	<b>Declination (°)</b>	<b>Dip Angle (°)</b>	<b>Field Strength (nT)</b>
	IGRF2010	11/21/2013	8.59	67.00	52,896

<b>Design</b>	Plan #1 (11-21-13)			
<b>Audit Notes:</b>				
<b>Version:</b>	<b>Phase:</b>	PROTOTYPE	<b>Tie On Depth:</b>	0.0
<b>Vertical Section:</b>	<b>Depth From (TVD) (ft)</b>	<b>+N/-S (ft)</b>	<b>+E/-W (ft)</b>	<b>Direction (°)</b>
	0.0	0.0	0.0	83.91

<b>Plan Sections</b>										
Measured Depth (ft)	Inclination (°)	Azimuth (°)	Vertical Depth (ft)	+N/-S (ft)	+E/-W (ft)	Dogleg Rate (°/100ft)	Build Rate (°/100ft)	Turn Rate (°/100ft)	TFO (°)	Target
0.0	0.00	0.00	0.0	0.0	0.0	0.00	0.00	0.00	0.00	
5,350.0	0.00	0.00	5,350.0	0.0	0.0	0.00	0.00	0.00	0.00	
5,852.9	30.17	328.12	5,829.9	109.9	-68.3	6.00	6.00	0.00	328.12	
6,757.4	30.17	328.12	6,611.9	495.9	-308.4	0.00	0.00	0.00	0.00	
7,565.2	90.00	89.14	7,108.6	749.7	113.5	13.00	7.41	14.98	117.47	Entry Pt. 1502'FNL
7,565.6	90.00	89.15	7,108.6	749.7	114.0	1.43	0.00	1.43	90.00	
15,607.5	90.00	89.15	7,108.6	869.6	8,154.9	0.00	0.00	0.00	0.00	BHL 1463'FNL & 47

<b>Database:</b>	Landmark	<b>Local Co-ordinate Reference:</b>	Well Kodak North FD 25-119HC
<b>Company:</b>	Great Western	<b>TVD Reference:</b>	WELL @ 4776.6ft (RKB - 16.5')
<b>Project:</b>	SEC.26-T6N-R67W	<b>MD Reference:</b>	WELL @ 4776.6ft (RKB - 16.5')
<b>Site:</b>	Kodak North Pad Sec.26-T6N-R67W	<b>North Reference:</b>	True
<b>Well:</b>	Kodak North FD 25-119HC	<b>Survey Calculation Method:</b>	Minimum Curvature
<b>Wellbore:</b>	Wellbore #1		
<b>Design:</b>	Plan #1 (11-21-13)		

Planned Survey									
Measured Depth (ft)	Inclination (°)	Azimuth (°)	Vertical Depth (ft)	+N-S (ft)	+E-W (ft)	Vertical Section (ft)	Dogleg Rate (°/100ft)	Build Rate (°/100ft)	Turn Rate (°/100ft)
0.0	0.00	0.00	0.0	0.0	0.0	0.0	0.00	0.00	0.00
1.0	0.00	0.00	1.0	0.0	0.0	0.0	0.00	0.00	0.00
<b>SHL 2252'FNL &amp; 1910'FWL, Sec.26</b>									
100.0	0.00	0.00	100.0	0.0	0.0	0.0	0.00	0.00	0.00
200.0	0.00	0.00	200.0	0.0	0.0	0.0	0.00	0.00	0.00
300.0	0.00	0.00	300.0	0.0	0.0	0.0	0.00	0.00	0.00
400.0	0.00	0.00	400.0	0.0	0.0	0.0	0.00	0.00	0.00
500.0	0.00	0.00	500.0	0.0	0.0	0.0	0.00	0.00	0.00
600.0	0.00	0.00	600.0	0.0	0.0	0.0	0.00	0.00	0.00
700.0	0.00	0.00	700.0	0.0	0.0	0.0	0.00	0.00	0.00
800.0	0.00	0.00	800.0	0.0	0.0	0.0	0.00	0.00	0.00
900.0	0.00	0.00	900.0	0.0	0.0	0.0	0.00	0.00	0.00
1,000.0	0.00	0.00	1,000.0	0.0	0.0	0.0	0.00	0.00	0.00
1,100.0	0.00	0.00	1,100.0	0.0	0.0	0.0	0.00	0.00	0.00
1,200.0	0.00	0.00	1,200.0	0.0	0.0	0.0	0.00	0.00	0.00
1,300.0	0.00	0.00	1,300.0	0.0	0.0	0.0	0.00	0.00	0.00
1,400.0	0.00	0.00	1,400.0	0.0	0.0	0.0	0.00	0.00	0.00
1,500.0	0.00	0.00	1,500.0	0.0	0.0	0.0	0.00	0.00	0.00
1,600.0	0.00	0.00	1,600.0	0.0	0.0	0.0	0.00	0.00	0.00
1,700.0	0.00	0.00	1,700.0	0.0	0.0	0.0	0.00	0.00	0.00
1,800.0	0.00	0.00	1,800.0	0.0	0.0	0.0	0.00	0.00	0.00
1,900.0	0.00	0.00	1,900.0	0.0	0.0	0.0	0.00	0.00	0.00
2,000.0	0.00	0.00	2,000.0	0.0	0.0	0.0	0.00	0.00	0.00
2,100.0	0.00	0.00	2,100.0	0.0	0.0	0.0	0.00	0.00	0.00
2,200.0	0.00	0.00	2,200.0	0.0	0.0	0.0	0.00	0.00	0.00
2,300.0	0.00	0.00	2,300.0	0.0	0.0	0.0	0.00	0.00	0.00
2,400.0	0.00	0.00	2,400.0	0.0	0.0	0.0	0.00	0.00	0.00
2,500.0	0.00	0.00	2,500.0	0.0	0.0	0.0	0.00	0.00	0.00
2,600.0	0.00	0.00	2,600.0	0.0	0.0	0.0	0.00	0.00	0.00
2,700.0	0.00	0.00	2,700.0	0.0	0.0	0.0	0.00	0.00	0.00
2,800.0	0.00	0.00	2,800.0	0.0	0.0	0.0	0.00	0.00	0.00
2,900.0	0.00	0.00	2,900.0	0.0	0.0	0.0	0.00	0.00	0.00
3,000.0	0.00	0.00	3,000.0	0.0	0.0	0.0	0.00	0.00	0.00
3,100.0	0.00	0.00	3,100.0	0.0	0.0	0.0	0.00	0.00	0.00
3,200.0	0.00	0.00	3,200.0	0.0	0.0	0.0	0.00	0.00	0.00
3,300.0	0.00	0.00	3,300.0	0.0	0.0	0.0	0.00	0.00	0.00
3,400.0	0.00	0.00	3,400.0	0.0	0.0	0.0	0.00	0.00	0.00
3,500.0	0.00	0.00	3,500.0	0.0	0.0	0.0	0.00	0.00	0.00
3,600.0	0.00	0.00	3,600.0	0.0	0.0	0.0	0.00	0.00	0.00
3,700.0	0.00	0.00	3,700.0	0.0	0.0	0.0	0.00	0.00	0.00
3,800.0	0.00	0.00	3,800.0	0.0	0.0	0.0	0.00	0.00	0.00
3,900.0	0.00	0.00	3,900.0	0.0	0.0	0.0	0.00	0.00	0.00
4,000.0	0.00	0.00	4,000.0	0.0	0.0	0.0	0.00	0.00	0.00
4,100.0	0.00	0.00	4,100.0	0.0	0.0	0.0	0.00	0.00	0.00
4,200.0	0.00	0.00	4,200.0	0.0	0.0	0.0	0.00	0.00	0.00
4,300.0	0.00	0.00	4,300.0	0.0	0.0	0.0	0.00	0.00	0.00
4,400.0	0.00	0.00	4,400.0	0.0	0.0	0.0	0.00	0.00	0.00
4,500.0	0.00	0.00	4,500.0	0.0	0.0	0.0	0.00	0.00	0.00
4,600.0	0.00	0.00	4,600.0	0.0	0.0	0.0	0.00	0.00	0.00
4,700.0	0.00	0.00	4,700.0	0.0	0.0	0.0	0.00	0.00	0.00
4,800.0	0.00	0.00	4,800.0	0.0	0.0	0.0	0.00	0.00	0.00
4,900.0	0.00	0.00	4,900.0	0.0	0.0	0.0	0.00	0.00	0.00
5,000.0	0.00	0.00	5,000.0	0.0	0.0	0.0	0.00	0.00	0.00
5,100.0	0.00	0.00	5,100.0	0.0	0.0	0.0	0.00	0.00	0.00

<b>Database:</b>	Landmark	<b>Local Co-ordinate Reference:</b>	Well Kodak North FD 25-119HC
<b>Company:</b>	Great Western	<b>TVD Reference:</b>	WELL @ 4776.6ft (RKB - 16.5')
<b>Project:</b>	SEC.26-T6N-R67W	<b>MD Reference:</b>	WELL @ 4776.6ft (RKB - 16.5')
<b>Site:</b>	Kodak North Pad Sec.26-T6N-R67W	<b>North Reference:</b>	True
<b>Well:</b>	Kodak North FD 25-119HC	<b>Survey Calculation Method:</b>	Minimum Curvature
<b>Wellbore:</b>	Wellbore #1		
<b>Design:</b>	Plan #1 (11-21-13)		

Planned Survey										
Measured Depth (ft)	Inclination (°)	Azimuth (°)	Vertical Depth (ft)	+N/-S (ft)	+E/-W (ft)	Vertical Section (ft)	Dogleg Rate (°/100ft)	Build Rate (°/100ft)	Turn Rate (°/100ft)	
5,200.0	0.00	0.00	5,200.0	0.0	0.0	0.0	0.00	0.00	0.00	
5,300.0	0.00	0.00	5,300.0	0.0	0.0	0.0	0.00	0.00	0.00	
5,350.0	0.00	0.00	5,350.0	0.0	0.0	0.0	0.00	0.00	0.00	
<b>KOP - Start Build 6.00</b>										
5,400.0	3.00	328.12	5,400.0	1.1	-0.7	-0.6	6.00	6.00	0.00	
5,500.0	9.00	328.12	5,499.4	10.0	-6.2	-5.1	6.00	6.00	0.00	
5,600.0	15.00	328.12	5,597.2	27.6	-17.2	-14.2	6.00	6.00	0.00	
5,700.0	21.00	328.12	5,692.2	53.9	-33.5	-27.6	6.00	6.00	0.00	
5,800.0	27.00	328.12	5,783.5	88.4	-55.0	-45.3	6.00	6.00	0.00	
5,852.9	30.17	328.12	5,829.9	109.9	-68.3	-56.3	6.00	6.00	0.00	
5,900.0	30.17	328.12	5,870.7	130.0	-80.8	-66.6	0.00	0.00	0.00	
6,000.0	30.17	328.12	5,957.1	172.7	-107.4	-88.5	0.00	0.00	0.00	
6,100.0	30.17	328.12	6,043.6	215.3	-133.9	-110.3	0.00	0.00	0.00	
6,200.0	30.17	328.12	6,130.1	258.0	-160.5	-132.2	0.00	0.00	0.00	
6,300.0	30.17	328.12	6,216.5	300.7	-187.0	-154.1	0.00	0.00	0.00	
6,400.0	30.17	328.12	6,303.0	343.4	-213.5	-175.9	0.00	0.00	0.00	
6,500.0	30.17	328.12	6,389.4	386.0	-240.1	-197.8	0.00	0.00	0.00	
6,600.0	30.17	328.12	6,475.9	428.7	-266.6	-219.7	0.00	0.00	0.00	
6,700.0	30.17	328.12	6,562.3	471.4	-293.2	-241.5	0.00	0.00	0.00	
6,757.4	30.17	328.12	6,611.9	495.9	-308.4	-254.1	0.00	0.00	0.00	
<b>Start DLS 13.00 TFO 117.47</b>										
6,800.0	28.01	338.63	6,649.2	514.3	-317.7	-261.4	13.00	-5.07	24.66	
6,900.0	26.70	7.01	6,738.4	558.7	-323.6	-262.5	13.00	-1.31	28.38	
7,000.0	30.90	32.78	6,826.3	602.7	-306.8	-241.2	13.00	4.20	25.77	
7,100.0	38.85	50.93	6,908.5	644.3	-268.4	-198.6	13.00	7.95	18.15	
7,200.0	48.73	63.21	6,980.8	681.1	-210.3	-136.9	13.00	9.88	12.29	
7,300.0	59.56	72.12	7,039.3	711.4	-135.4	-59.2	13.00	10.83	8.91	
7,400.0	70.87	79.19	7,081.2	733.6	-47.6	30.5	13.00	11.31	7.07	
7,500.0	82.42	85.34	7,104.3	746.6	48.6	127.5	13.00	11.55	6.15	
7,565.2	90.00	89.14	7,108.6	749.7	113.5	192.4	12.99	11.62	5.83	
<b>7" - Entry Pt. 1502'FNL &amp; 2025'FWL, Sec.26</b>										
7,565.6	90.00	89.15	7,108.6	749.7	114.0	192.8	1.96	0.76	1.81	
7,600.0	90.00	89.15	7,108.6	750.2	148.4	227.1	0.00	0.00	0.00	
7,700.0	90.00	89.15	7,108.6	751.7	248.3	326.6	0.00	0.00	0.00	
7,800.0	90.00	89.15	7,108.6	753.2	348.3	426.2	0.00	0.00	0.00	
7,900.0	90.00	89.15	7,108.6	754.7	448.3	525.8	0.00	0.00	0.00	
8,000.0	90.00	89.15	7,108.6	756.2	548.3	625.4	0.00	0.00	0.00	
8,100.0	90.00	89.15	7,108.6	757.7	648.3	725.0	0.00	0.00	0.00	
8,200.0	90.00	89.15	7,108.6	759.2	748.3	824.6	0.00	0.00	0.00	
8,300.0	90.00	89.15	7,108.6	760.7	848.3	924.1	0.00	0.00	0.00	
8,400.0	90.00	89.15	7,108.6	762.1	948.3	1,023.7	0.00	0.00	0.00	
8,500.0	90.00	89.15	7,108.6	763.6	1,048.3	1,123.3	0.00	0.00	0.00	
8,600.0	90.00	89.15	7,108.6	765.1	1,148.2	1,222.9	0.00	0.00	0.00	
8,700.0	90.00	89.15	7,108.6	766.6	1,248.2	1,322.5	0.00	0.00	0.00	
8,800.0	90.00	89.15	7,108.6	768.1	1,348.2	1,422.1	0.00	0.00	0.00	
8,900.0	90.00	89.15	7,108.6	769.6	1,448.2	1,521.6	0.00	0.00	0.00	
9,000.0	90.00	89.15	7,108.6	771.1	1,548.2	1,621.2	0.00	0.00	0.00	
9,100.0	90.00	89.15	7,108.6	772.6	1,648.2	1,720.8	0.00	0.00	0.00	
9,200.0	90.00	89.15	7,108.6	774.1	1,748.2	1,820.4	0.00	0.00	0.00	
9,300.0	90.00	89.15	7,108.6	775.6	1,848.2	1,920.0	0.00	0.00	0.00	
9,400.0	90.00	89.15	7,108.6	777.0	1,948.2	2,019.6	0.00	0.00	0.00	
9,500.0	90.00	89.15	7,108.6	778.5	2,048.1	2,119.1	0.00	0.00	0.00	
9,600.0	90.00	89.15	7,108.6	780.0	2,148.1	2,218.7	0.00	0.00	0.00	

<b>Database:</b>	Landmark	<b>Local Co-ordinate Reference:</b>	Well Kodak North FD 25-119HC
<b>Company:</b>	Great Western	<b>TVD Reference:</b>	WELL @ 4776.6ft (RKB - 16.5')
<b>Project:</b>	SEC.26-T6N-R67W	<b>MD Reference:</b>	WELL @ 4776.6ft (RKB - 16.5')
<b>Site:</b>	Kodak North Pad Sec.26-T6N-R67W	<b>North Reference:</b>	True
<b>Well:</b>	Kodak North FD 25-119HC	<b>Survey Calculation Method:</b>	Minimum Curvature
<b>Wellbore:</b>	Wellbore #1		
<b>Design:</b>	Plan #1 (11-21-13)		

Planned Survey										
Measured Depth (ft)	Inclination (°)	Azimuth (°)	Vertical Depth (ft)	+N/-S (ft)	+E/-W (ft)	Vertical Section (ft)	Dogleg Rate (°/100ft)	Build Rate (°/100ft)	Turn Rate (°/100ft)	
9,700.0	90.00	89.15	7,108.6	781.5	2,248.1	2,318.3	0.00	0.00	0.00	
9,800.0	90.00	89.15	7,108.6	783.0	2,348.1	2,417.9	0.00	0.00	0.00	
9,900.0	90.00	89.15	7,108.6	784.5	2,448.1	2,517.5	0.00	0.00	0.00	
10,000.0	90.00	89.15	7,108.6	786.0	2,548.1	2,617.1	0.00	0.00	0.00	
10,100.0	90.00	89.15	7,108.6	787.5	2,648.1	2,716.6	0.00	0.00	0.00	
10,200.0	90.00	89.15	7,108.6	789.0	2,748.1	2,816.2	0.00	0.00	0.00	
10,300.0	90.00	89.15	7,108.6	790.5	2,848.1	2,915.8	0.00	0.00	0.00	
10,400.0	90.00	89.15	7,108.6	791.9	2,948.0	3,015.4	0.00	0.00	0.00	
10,500.0	90.00	89.15	7,108.6	793.4	3,048.0	3,115.0	0.00	0.00	0.00	
10,600.0	90.00	89.15	7,108.6	794.9	3,148.0	3,214.6	0.00	0.00	0.00	
10,700.0	90.00	89.15	7,108.6	796.4	3,248.0	3,314.1	0.00	0.00	0.00	
10,800.0	90.00	89.15	7,108.6	797.9	3,348.0	3,413.7	0.00	0.00	0.00	
10,900.0	90.00	89.15	7,108.6	799.4	3,448.0	3,513.3	0.00	0.00	0.00	
11,000.0	90.00	89.15	7,108.6	800.9	3,548.0	3,612.9	0.00	0.00	0.00	
11,100.0	90.00	89.15	7,108.6	802.4	3,648.0	3,712.5	0.00	0.00	0.00	
11,200.0	90.00	89.15	7,108.6	803.9	3,748.0	3,812.1	0.00	0.00	0.00	
11,300.0	90.00	89.15	7,108.6	805.4	3,847.9	3,911.6	0.00	0.00	0.00	
11,400.0	90.00	89.15	7,108.6	806.9	3,947.9	4,011.2	0.00	0.00	0.00	
11,500.0	90.00	89.15	7,108.6	808.3	4,047.9	4,110.8	0.00	0.00	0.00	
11,600.0	90.00	89.15	7,108.6	809.8	4,147.9	4,210.4	0.00	0.00	0.00	
11,700.0	90.00	89.15	7,108.6	811.3	4,247.9	4,310.0	0.00	0.00	0.00	
11,800.0	90.00	89.15	7,108.6	812.8	4,347.9	4,409.6	0.00	0.00	0.00	
11,900.0	90.00	89.15	7,108.6	814.3	4,447.9	4,509.1	0.00	0.00	0.00	
12,000.0	90.00	89.15	7,108.6	815.8	4,547.9	4,608.7	0.00	0.00	0.00	
12,100.0	90.00	89.15	7,108.6	817.3	4,647.9	4,708.3	0.00	0.00	0.00	
12,200.0	90.00	89.15	7,108.6	818.8	4,747.8	4,807.9	0.00	0.00	0.00	
12,300.0	90.00	89.15	7,108.6	820.3	4,847.8	4,907.5	0.00	0.00	0.00	
12,400.0	90.00	89.15	7,108.6	821.8	4,947.8	5,007.1	0.00	0.00	0.00	
12,500.0	90.00	89.15	7,108.6	823.2	5,047.8	5,106.6	0.00	0.00	0.00	
12,600.0	90.00	89.15	7,108.6	824.7	5,147.8	5,206.2	0.00	0.00	0.00	
12,700.0	90.00	89.15	7,108.6	826.2	5,247.8	5,305.8	0.00	0.00	0.00	
12,800.0	90.00	89.15	7,108.6	827.7	5,347.8	5,405.4	0.00	0.00	0.00	
12,900.0	90.00	89.15	7,108.6	829.2	5,447.8	5,505.0	0.00	0.00	0.00	
13,000.0	90.00	89.15	7,108.6	830.7	5,547.8	5,604.6	0.00	0.00	0.00	
13,100.0	90.00	89.15	7,108.6	832.2	5,647.7	5,704.1	0.00	0.00	0.00	
13,200.0	90.00	89.15	7,108.6	833.7	5,747.7	5,803.7	0.00	0.00	0.00	
13,300.0	90.00	89.15	7,108.6	835.2	5,847.7	5,903.3	0.00	0.00	0.00	
13,400.0	90.00	89.15	7,108.6	836.7	5,947.7	6,002.9	0.00	0.00	0.00	
13,500.0	90.00	89.15	7,108.6	838.2	6,047.7	6,102.5	0.00	0.00	0.00	
13,600.0	90.00	89.15	7,108.6	839.6	6,147.7	6,202.1	0.00	0.00	0.00	
13,700.0	90.00	89.15	7,108.6	841.1	6,247.7	6,301.6	0.00	0.00	0.00	
13,800.0	90.00	89.15	7,108.6	842.6	6,347.7	6,401.2	0.00	0.00	0.00	
13,900.0	90.00	89.15	7,108.6	844.1	6,447.7	6,500.8	0.00	0.00	0.00	
14,000.0	90.00	89.15	7,108.6	845.6	6,547.6	6,600.4	0.00	0.00	0.00	
14,100.0	90.00	89.15	7,108.6	847.1	6,647.6	6,700.0	0.00	0.00	0.00	
14,200.0	90.00	89.15	7,108.6	848.6	6,747.6	6,799.6	0.00	0.00	0.00	
14,300.0	90.00	89.15	7,108.6	850.1	6,847.6	6,899.1	0.00	0.00	0.00	
14,400.0	90.00	89.15	7,108.6	851.6	6,947.6	6,998.7	0.00	0.00	0.00	
14,500.0	90.00	89.15	7,108.6	853.1	7,047.6	7,098.3	0.00	0.00	0.00	
14,600.0	90.00	89.15	7,108.6	854.5	7,147.6	7,197.9	0.00	0.00	0.00	
14,700.0	90.00	89.15	7,108.6	856.0	7,247.6	7,297.5	0.00	0.00	0.00	
14,800.0	90.00	89.15	7,108.6	857.5	7,347.6	7,397.1	0.00	0.00	0.00	
14,900.0	90.00	89.15	7,108.6	859.0	7,447.5	7,496.6	0.00	0.00	0.00	
15,000.0	90.00	89.15	7,108.6	860.5	7,547.5	7,596.2	0.00	0.00	0.00	

<b>Database:</b>	Landmark	<b>Local Co-ordinate Reference:</b>	Well Kodak North FD 25-119HC
<b>Company:</b>	Great Western	<b>TVD Reference:</b>	WELL @ 4776.6ft (RKB - 16.5')
<b>Project:</b>	SEC.26-T6N-R67W	<b>MD Reference:</b>	WELL @ 4776.6ft (RKB - 16.5')
<b>Site:</b>	Kodak North Pad Sec.26-T6N-R67W	<b>North Reference:</b>	True
<b>Well:</b>	Kodak North FD 25-119HC	<b>Survey Calculation Method:</b>	Minimum Curvature
<b>Wellbore:</b>	Wellbore #1		
<b>Design:</b>	Plan #1 (11-21-13)		

Planned Survey										
Measured Depth (ft)	Inclination (°)	Azimuth (°)	Vertical Depth (ft)	+N/-S (ft)	+E/-W (ft)	Vertical Section (ft)	Dogleg Rate (°/100ft)	Build Rate (°/100ft)	Turn Rate (°/100ft)	
15,100.0	90.00	89.15	7,108.6	862.0	7,647.5	7,695.8	0.00	0.00	0.00	
15,200.0	90.00	89.15	7,108.6	863.5	7,747.5	7,795.4	0.00	0.00	0.00	
15,300.0	90.00	89.15	7,108.6	865.0	7,847.5	7,895.0	0.00	0.00	0.00	
15,400.0	90.00	89.15	7,108.6	866.5	7,947.5	7,994.6	0.00	0.00	0.00	
15,500.0	90.00	89.15	7,108.6	868.0	8,047.5	8,094.1	0.00	0.00	0.00	
15,600.0	90.00	89.15	7,108.6	869.4	8,147.5	8,193.7	0.00	0.00	0.00	
15,607.5	90.00	89.15	7,108.6	869.6	8,154.9	8,201.2	0.00	0.00	0.00	
<b>BHL 1463°FNL &amp; 470°FEL, Sec.25</b>										

Casing Points						
Measured Depth (ft)	Vertical Depth (ft)	Name	Casing Diameter (")	Hole Diameter (")		
7,565.2	7,108.6	7"	7	7-1/2		

Plan Annotations					
Measured Depth (ft)	Vertical Depth (ft)	Local Coordinates		Comment	
		+N/-S (ft)	+E/-W (ft)		
5,350.0	5,350.0	0.0	0.0	KOP - Start Build 6.00	
6,757.4	6,611.9	495.9	-308.4	Start DLS 13.00 TFO 117.47	
15,607.5	7,108.6	869.6	8,155.0	TD at 15607.5	



## **Directional**

### **Great Western**

**SEC.26-T6N-R67W**

**Kodak North Pad Sec.26-T6N-R67W**

**Kodak North FD 25-119HC**

**Wellbore #1**

**Plan #1 (11-21-13)**

## **Anticollision Report**

**22 November, 2013**

<b>Company:</b>	Great Western	<b>Local Co-ordinate Reference:</b>	Well Kodak North FD 25-119HC
<b>Project:</b>	SEC.26-T6N-R67W	<b>TVD Reference:</b>	WELL @ 4776.6ft (RKB - 16.5')
<b>Reference Site:</b>	Kodak North Pad Sec.26-T6N-R67W	<b>MD Reference:</b>	WELL @ 4776.6ft (RKB - 16.5')
<b>Site Error:</b>	0.0ft	<b>North Reference:</b>	True
<b>Reference Well:</b>	Kodak North FD 25-119HC	<b>Survey Calculation Method:</b>	Minimum Curvature
<b>Well Error:</b>	0.0ft	<b>Output errors are at</b>	2.00 sigma
<b>Reference Wellbore</b>	Wellbore #1	<b>Database:</b>	Landmark
<b>Reference Design:</b>	Plan #1 (11-21-13)	<b>Offset TVD Reference:</b>	Offset Datum

<b>Reference</b>	Plan #1 (11-21-13)		
<b>Filter type:</b>	NO GLOBAL FILTER: Using user defined selection & filtering criteria		
<b>Interpolation Method:</b>	MD Interval 100.0ft	<b>Error Model:</b>	ISCWSA
<b>Depth Range:</b>	Unlimited	<b>Scan Method:</b>	Closest Approach 3D
<b>Results Limited by:</b>	Maximum center-center distance of 1,000.0ft	<b>Error Surface:</b>	Elliptical Conic
<b>Warning Levels Evaluated at:</b>	2.00 Sigma		

<b>Survey Tool Program</b>	Date	11/22/2013		
<b>From (ft)</b>	<b>To (ft)</b>	<b>Survey (Wellbore)</b>	<b>Tool Name</b>	<b>Description</b>
0.0	15,607.5	Plan #1 (11-21-13) (Wellbore #1)	MWD	MWD - Standard

Site Name	Reference Measured Depth (ft)	Offset Measured Depth (ft)	Distance Between Centres (ft)	Distance Between Ellipses (ft)	Separation Factor	Warning
<b>Summary</b>						
<b>Offset Well - Wellbore - Design</b>						
Kodak North Pad Sec.26-T6N-R67W						
Kodak North FD 25-039HC - Wellbore #1 - Plan #1 (11-2	3,100.0	3,100.0	89.6	75.9	6.535	CC
Kodak North FD 25-039HC - Wellbore #1 - Plan #1 (11-2	3,200.0	3,199.3	90.0	75.8	6.356	ES
Kodak North FD 25-039HC - Wellbore #1 - Plan #1 (11-2	3,300.0	3,298.0	91.6	77.0	6.271	SF
Kodak North FD 25-039HN - Wellbore #1 - Plan #1 (11-2	3,300.0	3,300.0	59.6	44.9	4.076	CC, ES
Kodak North FD 25-039HN - Wellbore #1 - Plan #1 (11-2	3,400.0	3,399.4	60.0	45.0	3.988	SF
Kodak North FD 25-079HN - Wellbore #1 - Plan #1 (11-2	4,300.0	4,300.0	30.1	10.9	1.573	CC
Kodak North FD 25-079HN - Wellbore #1 - Plan #1 (11-2	15,607.5	15,518.7	416.5	-9.5	0.978	Level 1, ES, SF
Kodak North FD 25-122HN - Wellbore #1 - Plan #1 (11-2	5,300.0	5,300.0	100.2	76.6	4.244	CC
Kodak North FD 25-122HN - Wellbore #1 - Plan #1 (11-2	15,607.5	15,382.5	356.9	-48.1	0.881	Level 1, ES, SF
Kodak North FD 27-099HC - Wellbore #1 - Plan #1 (11-2	4,600.0	4,600.0	60.4	39.9	2.952	CC, ES
Kodak North FD 27-099HC - Wellbore #1 - Plan #1 (11-2	4,700.0	4,698.9	61.2	40.4	2.931	SF
Kodak North FD 27-102HN - Wellbore #1 - Plan #1 (11-2	4,800.0	4,800.0	30.1	8.7	1.408	Level 3, CC, ES, SF

Offset Design												Offset Site Error:	0.0ft
Survey Program: 0-MWD												Offset Well Error:	0.0ft
Reference	Offset	Semi Major Axis			Distance							Warning	
Measured Depth (ft)	Vertical Depth (ft)	Measured Depth (ft)	Vertical Depth (ft)	Reference (ft)	Offset (ft)	Highside Toolface (°)	Offset Wellbore Centre +N/-S (ft)	+E/-W (ft)	Between Centres (ft)	Between Ellipses (ft)	Minimum Separation (ft)	Separation Factor	
0.0	0.0	0.0	0.0	0.0	0.0	-89.98	0.0	-89.6	89.6				
100.0	100.0	100.0	100.0	0.1	0.1	-89.98	0.0	-89.6	89.6	89.4	0.22	398.662	
200.0	200.0	200.0	200.0	0.3	0.3	-89.98	0.0	-89.6	89.6	88.9	0.67	132.887	
300.0	300.0	300.0	300.0	0.6	0.6	-89.98	0.0	-89.6	89.6	88.5	1.12	79.732	
400.0	400.0	400.0	400.0	0.8	0.8	-89.98	0.0	-89.6	89.6	88.0	1.57	56.952	
500.0	500.0	500.0	500.0	1.0	1.0	-89.98	0.0	-89.6	89.6	87.6	2.02	44.296	
600.0	600.0	600.0	600.0	1.2	1.2	-89.98	0.0	-89.6	89.6	87.1	2.47	36.242	
700.0	700.0	700.0	700.0	1.5	1.5	-89.98	0.0	-89.6	89.6	86.7	2.92	30.666	
800.0	800.0	800.0	800.0	1.7	1.7	-89.98	0.0	-89.6	89.6	86.2	3.37	26.577	
900.0	900.0	900.0	900.0	1.9	1.9	-89.98	0.0	-89.6	89.6	85.8	3.82	23.451	
1,000.0	1,000.0	1,000.0	1,000.0	2.1	2.1	-89.98	0.0	-89.6	89.6	85.3	4.27	20.982	
1,100.0	1,100.0	1,100.0	1,100.0	2.4	2.4	-89.98	0.0	-89.6	89.6	84.9	4.72	18.984	
1,200.0	1,200.0	1,200.0	1,200.0	2.6	2.6	-89.98	0.0	-89.6	89.6	84.4	5.17	17.333	
1,300.0	1,300.0	1,300.0	1,300.0	2.8	2.8	-89.98	0.0	-89.6	89.6	84.0	5.62	15.946	
1,400.0	1,400.0	1,400.0	1,400.0	3.0	3.0	-89.98	0.0	-89.6	89.6	83.5	6.07	14.765	
1,500.0	1,500.0	1,500.0	1,500.0	3.3	3.3	-89.98	0.0	-89.6	89.6	83.1	6.52	13.747	

CC - Min centre to center distance or convergent point, SF - min separation factor, ES - min ellipse separation

<b>Company:</b>	Great Western	<b>Local Co-ordinate Reference:</b>	Well Kodak North FD 25-119HC
<b>Project:</b>	SEC.26-T6N-R67W	<b>TVD Reference:</b>	WELL @ 4776.6ft (RKB - 16.5')
<b>Reference Site:</b>	Kodak North Pad Sec.26-T6N-R67W	<b>MD Reference:</b>	WELL @ 4776.6ft (RKB - 16.5')
<b>Site Error:</b>	0.0ft	<b>North Reference:</b>	True
<b>Reference Well:</b>	Kodak North FD 25-119HC	<b>Survey Calculation Method:</b>	Minimum Curvature
<b>Well Error:</b>	0.0ft	<b>Output errors are at</b>	2.00 sigma
<b>Reference Wellbore</b>	Wellbore #1	<b>Database:</b>	Landmark
<b>Reference Design:</b>	Plan #1 (11-21-13)	<b>Offset TVD Reference:</b>	Offset Datum

Offset Design													Offset Site Error:	0.0 ft	
Survey Program: 0-MWD													Offset Well Error:		0.0 ft
Reference		Offset		Semi Major Axis			Distance						Warning		
Measured Depth (ft)	Vertical Depth (ft)	Measured Depth (ft)	Vertical Depth (ft)	Reference (ft)	Offset (ft)	Highside Toolface (°)	Offset Wellbore Centre +N/-S (ft)	+E/-W (ft)	Between Centres (ft)	Between Ellipses (ft)	Minimum Separation (ft)	Separation Factor			
1,600.0	1,600.0	1,600.0	1,600.0	3.5	3.5	-89.98	0.0	-89.6	89.6	82.6	6.97	12.860			
1,700.0	1,700.0	1,700.0	1,700.0	3.7	3.7	-89.98	0.0	-89.6	89.6	82.2	7.42	12.081			
1,800.0	1,800.0	1,800.0	1,800.0	3.9	3.9	-89.98	0.0	-89.6	89.6	81.7	7.87	11.390			
1,900.0	1,900.0	1,900.0	1,900.0	4.2	4.2	-89.98	0.0	-89.6	89.6	81.3	8.32	10.775			
2,000.0	2,000.0	2,000.0	2,000.0	4.4	4.4	-89.98	0.0	-89.6	89.6	80.8	8.77	10.222			
2,100.0	2,100.0	2,100.0	2,100.0	4.6	4.6	-89.98	0.0	-89.6	89.6	80.4	9.22	9.723			
2,200.0	2,200.0	2,200.0	2,200.0	4.8	4.8	-89.98	0.0	-89.6	89.6	79.9	9.66	9.271			
2,300.0	2,300.0	2,300.0	2,300.0	5.1	5.1	-89.98	0.0	-89.6	89.6	79.5	10.11	8.859			
2,400.0	2,400.0	2,400.0	2,400.0	5.3	5.3	-89.98	0.0	-89.6	89.6	79.0	10.56	8.482			
2,500.0	2,500.0	2,500.0	2,500.0	5.5	5.5	-89.98	0.0	-89.6	89.6	78.6	11.01	8.136			
2,600.0	2,600.0	2,600.0	2,600.0	5.7	5.7	-89.98	0.0	-89.6	89.6	78.1	11.46	7.817			
2,700.0	2,700.0	2,700.0	2,700.0	6.0	6.0	-89.98	0.0	-89.6	89.6	77.7	11.91	7.522			
2,800.0	2,800.0	2,800.0	2,800.0	6.2	6.2	-89.98	0.0	-89.6	89.6	77.2	12.36	7.248			
2,900.0	2,900.0	2,900.0	2,900.0	6.4	6.4	-89.98	0.0	-89.6	89.6	76.8	12.81	6.994			
3,000.0	3,000.0	3,000.0	3,000.0	6.6	6.6	-89.98	0.0	-89.6	89.6	76.3	13.26	6.757			
3,100.0	3,100.0	3,100.0	3,100.0	6.9	6.9	-89.98	0.0	-89.6	89.6	75.9	13.71	6.535 CC			
3,200.0	3,200.0	3,199.3	3,199.2	7.1	7.1	-88.35	2.6	-89.9	90.0	75.8	14.16	6.356 ES			
3,300.0	3,300.0	3,298.0	3,297.7	7.3	7.3	-83.60	10.2	-91.0	91.6	77.0	14.60	6.271 SF			
3,400.0	3,400.0	3,395.7	3,394.6	7.5	7.5	-76.24	22.7	-92.7	95.5	80.5	15.05	6.350			
3,500.0	3,500.0	3,491.9	3,489.2	7.8	7.7	-67.28	39.7	-94.9	103.5	88.0	15.49	6.681			
3,600.0	3,600.0	3,586.1	3,580.9	8.0	8.0	-58.04	61.0	-97.8	116.9	100.9	15.93	7.334			
3,700.0	3,700.0	3,677.9	3,669.2	8.2	8.2	-49.62	86.0	-101.2	136.3	120.0	16.37	8.329			
3,800.0	3,800.0	3,767.1	3,753.6	8.4	8.5	-42.56	114.3	-105.0	162.0	145.2	16.80	9.642			
3,900.0	3,900.0	3,853.3	3,834.0	8.7	8.9	-36.90	145.4	-109.2	193.4	176.2	17.23	11.227			
4,000.0	4,000.0	3,936.5	3,910.0	8.9	9.2	-32.45	178.7	-113.6	230.1	212.4	17.66	13.030			
4,100.0	4,100.0	4,016.3	3,981.6	9.1	9.6	-28.97	213.7	-118.4	271.5	253.4	18.09	15.006			
4,200.0	4,200.0	4,099.3	4,054.3	9.3	10.1	-26.03	253.3	-123.7	317.3	298.7	18.55	17.102			
4,300.0	4,300.0	4,178.4	4,122.9	9.6	10.6	-23.79	292.5	-128.9	365.4	346.4	19.01	19.218			
4,400.0	4,400.0	4,265.1	4,197.9	9.8	11.2	-21.88	335.4	-134.7	414.1	394.6	19.51	21.218			
4,500.0	4,500.0	4,351.7	4,273.0	10.0	11.8	-20.37	378.3	-140.5	463.0	443.0	20.03	23.111			
4,600.0	4,600.0	4,438.3	4,348.0	10.2	12.4	-19.15	421.2	-146.3	512.1	491.6	20.57	24.896			
4,700.0	4,700.0	4,524.9	4,423.0	10.5	13.1	-18.14	464.1	-152.0	561.4	540.3	21.12	26.576			
4,800.0	4,800.0	4,611.6	4,498.1	10.7	13.8	-17.29	506.9	-157.8	610.8	589.1	21.69	28.156			
4,900.0	4,900.0	4,698.2	4,573.1	10.9	14.5	-16.57	549.8	-163.6	660.3	638.0	22.28	29.641			
5,000.0	5,000.0	4,784.8	4,648.1	11.1	15.2	-15.94	592.7	-169.3	709.8	686.9	22.87	31.035			
5,100.0	5,100.0	4,871.4	4,723.2	11.4	15.9	-15.40	635.6	-175.1	759.4	735.9	23.48	32.345			
5,200.0	5,200.0	4,958.0	4,798.2	11.6	16.6	-14.93	678.5	-180.9	809.1	785.0	24.10	33.576			
5,300.0	5,300.0	5,044.7	4,873.2	11.8	17.4	-14.50	721.4	-186.6	858.7	834.0	24.72	34.735			
5,400.0	5,400.0	5,131.9	4,948.8	12.0	18.1	-17.29	764.6	-192.4	907.4	883.3	24.09	37.668			
5,500.0	5,499.4	5,222.7	5,027.5	12.2	18.9	17.04	809.6	-198.5	948.2	923.6	24.61	38.537			
5,600.0	5,597.2	5,316.9	5,109.0	12.5	19.8	17.15	856.2	-204.8	979.8	954.9	24.94	39.285			

<b>Company:</b>	Great Western	<b>Local Co-ordinate Reference:</b>	Well Kodak North FD 25-119HC
<b>Project:</b>	SEC.26-T6N-R67W	<b>TVD Reference:</b>	WELL @ 4776.6ft (RKB - 16.5')
<b>Reference Site:</b>	Kodak North Pad Sec.26-T6N-R67W	<b>MD Reference:</b>	WELL @ 4776.6ft (RKB - 16.5')
<b>Site Error:</b>	0.0ft	<b>North Reference:</b>	True
<b>Reference Well:</b>	Kodak North FD 25-119HC	<b>Survey Calculation Method:</b>	Minimum Curvature
<b>Well Error:</b>	0.0ft	<b>Output errors are at</b>	2.00 sigma
<b>Reference Wellbore</b>	Wellbore #1	<b>Database:</b>	Landmark
<b>Reference Design:</b>	Plan #1 (11-21-13)	<b>Offset TVD Reference:</b>	Offset Datum

Offset Design													Offset Site Error:	0.0 ft	
Survey Program: 0-MWD													Offset Well Error:		0.0 ft
Reference				Offset			Semi Major Axis			Distance				Warning	
Measured Depth (ft)	Vertical Depth (ft)	Measured Depth (ft)	Vertical Depth (ft)	Reference (ft)	Offset (ft)	Highside Toolface (°)	Offset Wellbore Centre +N/-S (ft)	+E/-W (ft)	Between Centres (ft)	Between Ellipses (ft)	Minimum Separation (ft)	Separation Factor			
0.0	0.0	0.0	0.0	0.0	0.0	-89.98	0.0	-59.6	59.6						
100.0	100.0	100.0	100.0	0.1	0.1	-89.98	0.0	-59.6	59.6	59.3	0.22	264.949			
200.0	200.0	200.0	200.0	0.3	0.3	-89.98	0.0	-59.6	59.6	58.9	0.67	88.316			
300.0	300.0	300.0	300.0	0.6	0.6	-89.98	0.0	-59.6	59.6	58.4	1.12	52.990			
400.0	400.0	400.0	400.0	0.8	0.8	-89.98	0.0	-59.6	59.6	58.0	1.57	37.850			
500.0	500.0	500.0	500.0	1.0	1.0	-89.98	0.0	-59.6	59.6	57.5	2.02	29.439			
600.0	600.0	600.0	600.0	1.2	1.2	-89.98	0.0	-59.6	59.6	57.1	2.47	24.086			
700.0	700.0	700.0	700.0	1.5	1.5	-89.98	0.0	-59.6	59.6	56.6	2.92	20.381			
800.0	800.0	800.0	800.0	1.7	1.7	-89.98	0.0	-59.6	59.6	56.2	3.37	17.663			
900.0	900.0	900.0	900.0	1.9	1.9	-89.98	0.0	-59.6	59.6	55.7	3.82	15.585			
1,000.0	1,000.0	1,000.0	1,000.0	2.1	2.1	-89.98	0.0	-59.6	59.6	55.3	4.27	13.945			
1,100.0	1,100.0	1,100.0	1,100.0	2.4	2.4	-89.98	0.0	-59.6	59.6	54.8	4.72	12.617			
1,200.0	1,200.0	1,200.0	1,200.0	2.6	2.6	-89.98	0.0	-59.6	59.6	54.4	5.17	11.520			
1,300.0	1,300.0	1,300.0	1,300.0	2.8	2.8	-89.98	0.0	-59.6	59.6	53.9	5.62	10.598			
1,400.0	1,400.0	1,400.0	1,400.0	3.0	3.0	-89.98	0.0	-59.6	59.6	53.5	6.07	9.813			
1,500.0	1,500.0	1,500.0	1,500.0	3.3	3.3	-89.98	0.0	-59.6	59.6	53.0	6.52	9.136			
1,600.0	1,600.0	1,600.0	1,600.0	3.5	3.5	-89.98	0.0	-59.6	59.6	52.6	6.97	8.547			
1,700.0	1,700.0	1,700.0	1,700.0	3.7	3.7	-89.98	0.0	-59.6	59.6	52.1	7.42	8.029			
1,800.0	1,800.0	1,800.0	1,800.0	3.9	3.9	-89.98	0.0	-59.6	59.6	51.7	7.87	7.570			
1,900.0	1,900.0	1,900.0	1,900.0	4.2	4.2	-89.98	0.0	-59.6	59.6	51.2	8.32	7.161			
2,000.0	2,000.0	2,000.0	2,000.0	4.4	4.4	-89.98	0.0	-59.6	59.6	50.8	8.77	6.794			
2,100.0	2,100.0	2,100.0	2,100.0	4.6	4.6	-89.98	0.0	-59.6	59.6	50.3	9.22	6.462			
2,200.0	2,200.0	2,200.0	2,200.0	4.8	4.8	-89.98	0.0	-59.6	59.6	49.9	9.66	6.162			
2,300.0	2,300.0	2,300.0	2,300.0	5.1	5.1	-89.98	0.0	-59.6	59.6	49.4	10.11	5.888			
2,400.0	2,400.0	2,400.0	2,400.0	5.3	5.3	-89.98	0.0	-59.6	59.6	49.0	10.56	5.637			
2,500.0	2,500.0	2,500.0	2,500.0	5.5	5.5	-89.98	0.0	-59.6	59.6	48.5	11.01	5.407			
2,600.0	2,600.0	2,600.0	2,600.0	5.7	5.7	-89.98	0.0	-59.6	59.6	48.1	11.46	5.195			
2,700.0	2,700.0	2,700.0	2,700.0	6.0	6.0	-89.98	0.0	-59.6	59.6	47.6	11.91	4.999			
2,800.0	2,800.0	2,800.0	2,800.0	6.2	6.2	-89.98	0.0	-59.6	59.6	47.2	12.36	4.817			
2,900.0	2,900.0	2,900.0	2,900.0	6.4	6.4	-89.98	0.0	-59.6	59.6	46.7	12.81	4.648			
3,000.0	3,000.0	3,000.0	3,000.0	6.6	6.6	-89.98	0.0	-59.6	59.6	46.3	13.26	4.491			
3,100.0	3,100.0	3,100.0	3,100.0	6.9	6.9	-89.98	0.0	-59.6	59.6	45.8	13.71	4.343			
3,200.0	3,200.0	3,200.0	3,200.0	7.1	7.1	-89.98	0.0	-59.6	59.6	45.4	14.16	4.206			
3,300.0	3,300.0	3,300.0	3,300.0	7.3	7.3	-89.98	0.0	-59.6	59.6	44.9	14.61	4.076 CC, ES			
3,400.0	3,400.0	3,399.4	3,399.3	7.5	7.5	-87.54	2.6	-60.0	60.0	45.0	15.06	3.988 SF			
3,500.0	3,500.0	3,498.2	3,497.9	7.8	7.8	-80.59	10.2	-61.3	62.2	46.7	15.50	4.010			
3,600.0	3,600.0	3,596.0	3,594.8	8.0	8.0	-70.40	22.6	-63.4	67.5	51.6	15.95	4.235			
3,700.0	3,700.0	3,692.3	3,689.5	8.2	8.2	-59.18	39.6	-66.4	78.0	61.6	16.39	4.757			
3,800.0	3,800.0	3,786.6	3,781.3	8.4	8.4	-49.04	60.8	-70.0	94.6	77.7	16.83	5.619			
3,900.0	3,900.0	3,878.5	3,869.7	8.7	8.7	-40.93	85.7	-74.3	117.4	100.1	17.27	6.799			
4,000.0	4,000.0	3,967.7	3,954.2	8.9	9.0	-34.80	113.9	-79.2	146.1	128.4	17.70	8.250			
4,100.0	4,100.0	4,054.0	4,034.6	9.1	9.3	-30.26	144.8	-84.5	180.0	161.8	18.14	9.921			
4,200.0	4,200.0	4,137.2	4,110.6	9.3	9.7	-26.88	178.0	-90.2	218.6	200.0	18.58	11.765			
4,300.0	4,300.0	4,217.1	4,182.2	9.6	10.0	-24.32	212.9	-96.2	261.6	242.6	19.03	13.748			
4,400.0	4,400.0	4,293.6	4,249.4	9.8	10.5	-22.36	249.1	-102.4	308.5	289.1	19.48	15.839			
4,500.0	4,500.0	4,378.6	4,322.9	10.0	11.0	-20.65	291.0	-109.7	357.9	337.9	19.97	17.918			
4,600.0	4,600.0	4,465.1	4,397.8	10.2	11.6	-19.32	333.8	-117.0	407.4	387.0	20.49	19.887			
4,700.0	4,700.0	4,551.6	4,472.6	10.5	12.2	-18.28	376.6	-124.4	457.1	436.1	21.02	21.749			
4,800.0	4,800.0	4,638.1	4,547.4	10.7	12.8	-17.44	419.3	-131.8	506.9	485.4	21.57	23.505			
4,900.0	4,900.0	4,724.6	4,622.3	10.9	13.4	-16.76	462.1	-139.1	556.8	534.6	22.13	25.160			
5,000.0	5,000.0	4,811.1	4,697.1	11.1	14.1	-16.18	504.8	-146.5	606.7	584.0	22.71	26.718			
5,100.0	5,100.0	4,897.7	4,772.0	11.4	14.8	-15.69	547.6	-153.9	656.6	633.3	23.30	28.184			

CC - Min centre to center distance or convergent point, SF - min separation factor, ES - min ellipse separation

<b>Company:</b>	Great Western	<b>Local Co-ordinate Reference:</b>	Well Kodak North FD 25-119HC
<b>Project:</b>	SEC.26-T6N-R67W	<b>TVD Reference:</b>	WELL @ 4776.6ft (RKB - 16.5')
<b>Reference Site:</b>	Kodak North Pad Sec.26-T6N-R67W	<b>MD Reference:</b>	WELL @ 4776.6ft (RKB - 16.5')
<b>Site Error:</b>	0.0ft	<b>North Reference:</b>	True
<b>Reference Well:</b>	Kodak North FD 25-119HC	<b>Survey Calculation Method:</b>	Minimum Curvature
<b>Well Error:</b>	0.0ft	<b>Output errors are at</b>	2.00 sigma
<b>Reference Wellbore</b>	Wellbore #1	<b>Database:</b>	Landmark
<b>Reference Design:</b>	Plan #1 (11-21-13)	<b>Offset TVD Reference:</b>	Offset Datum

Offset Design													Offset Site Error:	0.0 ft	
Survey Program: 0-MWD													Offset Well Error:		0.0 ft
Reference		Offset		Semi Major Axis			Distance						Warning		
Measured Depth (ft)	Vertical Depth (ft)	Measured Depth (ft)	Vertical Depth (ft)	Reference (ft)	Offset (ft)	Highside Toolface (°)	Offset Wellbore Centre +N/-S (ft)	+E/-W (ft)	Between Centres (ft)	Between Ellipses (ft)	Minimum Separation (ft)	Separation Factor			
5,200.0	5,200.0	4,984.2	4,846.8	11.6	15.5	-15.27	590.4	-161.2	706.6	682.7	23.90	29.564			
5,300.0	5,300.0	5,070.7	4,921.7	11.8	16.2	-14.91	633.1	-168.6	756.6	732.1	24.51	30.864			
5,400.0	5,400.0	5,157.8	4,997.0	12.0	17.0	16.84	676.2	-176.0	805.5	781.6	23.92	33.673			
5,500.0	5,499.4	5,248.6	5,075.6	12.2	17.8	16.57	721.1	-183.7	846.6	822.2	24.39	34.708			
5,600.0	5,597.2	5,342.9	5,157.1	12.5	18.6	16.67	767.7	-191.7	878.5	853.8	24.69	35.579			
5,700.0	5,692.2	5,439.5	5,240.7	12.7	19.4	17.10	815.4	-200.0	900.9	876.1	24.82	36.297			
5,800.0	5,783.5	5,537.3	5,325.4	13.0	20.3	17.86	863.8	-208.3	913.6	888.8	24.79	36.849			
5,900.0	5,870.7	5,635.5	5,410.3	13.4	21.2	18.94	912.3	-216.7	917.9	892.8	25.03	36.672			
6,000.0	5,957.1	5,733.7	5,495.2	13.8	22.1	20.10	960.9	-225.0	921.1	895.4	25.69	35.856			
6,100.0	6,043.6	5,831.8	5,580.1	14.3	23.0	21.25	1,009.4	-233.4	924.8	898.4	26.39	35.045			
6,200.0	6,130.1	5,930.0	5,665.0	14.9	23.9	22.39	1,057.9	-241.7	928.8	901.7	27.13	34.238			
6,300.0	6,216.5	6,028.1	5,749.9	15.5	24.8	23.51	1,106.4	-250.1	933.2	905.3	27.91	33.434			
6,400.0	6,303.0	6,126.3	5,834.8	16.1	25.7	24.63	1,154.9	-258.4	938.0	909.2	28.74	32.635			
6,500.0	6,389.4	6,224.4	5,919.7	16.8	26.6	25.74	1,203.4	-266.8	943.1	913.5	29.62	31.843			
6,600.0	6,475.9	6,322.5	6,004.7	17.5	27.5	26.83	1,251.9	-275.1	948.6	918.0	30.54	31.058			
6,700.0	6,562.3	6,420.7	6,089.6	18.3	28.4	27.92	1,300.5	-283.5	954.4	922.9	31.52	30.283			
6,800.0	6,649.2	6,519.1	6,174.7	19.0	29.4	20.02	1,349.1	-291.9	960.6	928.0	32.53	29.524			
6,900.0	6,738.4	6,618.7	6,260.9	19.6	30.3	-4.72	1,398.4	-300.4	966.2	933.0	33.26	29.050			
7,000.0	6,826.3	6,715.2	6,344.3	20.0	31.2	-28.18	1,446.0	-308.6	971.3	937.7	33.65	28.862			
7,100.0	6,908.5	6,803.6	6,420.8	20.2	32.0	-44.76	1,489.7	-316.1	977.2	943.2	33.96	28.772			
7,200.0	6,980.8	6,879.3	6,486.3	20.4	32.8	-55.35	1,527.2	-322.5	986.3	951.9	34.42	28.659			

<b>Company:</b>	Great Western	<b>Local Co-ordinate Reference:</b>	Well Kodak North FD 25-119HC
<b>Project:</b>	SEC.26-T6N-R67W	<b>TVD Reference:</b>	WELL @ 4776.6ft (RKB - 16.5')
<b>Reference Site:</b>	Kodak North Pad Sec.26-T6N-R67W	<b>MD Reference:</b>	WELL @ 4776.6ft (RKB - 16.5')
<b>Site Error:</b>	0.0ft	<b>North Reference:</b>	True
<b>Reference Well:</b>	Kodak North FD 25-119HC	<b>Survey Calculation Method:</b>	Minimum Curvature
<b>Well Error:</b>	0.0ft	<b>Output errors are at</b>	2.00 sigma
<b>Reference Wellbore</b>	Wellbore #1	<b>Database:</b>	Landmark
<b>Reference Design:</b>	Plan #1 (11-21-13)	<b>Offset TVD Reference:</b>	Offset Datum

Offset Design													Offset Site Error:	0.0 ft	
Survey Program: 0-MWD													Offset Well Error:		0.0 ft
Reference		Offset		Semi Major Axis			Distance						Warning		
Measured Depth (ft)	Vertical Depth (ft)	Measured Depth (ft)	Vertical Depth (ft)	Reference (ft)	Offset (ft)	Highside Toolface (°)	Offset Wellbore Centre +N/-S (ft)	+E/-W (ft)	Between Centres (ft)	Between Ellipses (ft)	Minimum Separation (ft)	Separation Factor			
0.0	0.0	0.0	0.0	0.0	0.0	-89.98	0.0	-30.1	30.1						
100.0	100.0	100.0	100.0	0.1	0.1	-89.98	0.0	-30.1	30.1	29.8	0.22	133.713			
200.0	200.0	200.0	200.0	0.3	0.3	-89.98	0.0	-30.1	30.1	29.4	0.67	44.571			
300.0	300.0	300.0	300.0	0.6	0.6	-89.98	0.0	-30.1	30.1	28.9	1.12	26.743			
400.0	400.0	400.0	400.0	0.8	0.8	-89.98	0.0	-30.1	30.1	28.5	1.57	19.102			
500.0	500.0	500.0	500.0	1.0	1.0	-89.98	0.0	-30.1	30.1	28.0	2.02	14.857			
600.0	600.0	600.0	600.0	1.2	1.2	-89.98	0.0	-30.1	30.1	27.6	2.47	12.156			
700.0	700.0	700.0	700.0	1.5	1.5	-89.98	0.0	-30.1	30.1	27.1	2.92	10.286			
800.0	800.0	800.0	800.0	1.7	1.7	-89.98	0.0	-30.1	30.1	26.7	3.37	8.914			
900.0	900.0	900.0	900.0	1.9	1.9	-89.98	0.0	-30.1	30.1	26.2	3.82	7.865			
1,000.0	1,000.0	1,000.0	1,000.0	2.1	2.1	-89.98	0.0	-30.1	30.1	25.8	4.27	7.038			
1,100.0	1,100.0	1,100.0	1,100.0	2.4	2.4	-89.98	0.0	-30.1	30.1	25.3	4.72	6.367			
1,200.0	1,200.0	1,200.0	1,200.0	2.6	2.6	-89.98	0.0	-30.1	30.1	24.9	5.17	5.814			
1,300.0	1,300.0	1,300.0	1,300.0	2.8	2.8	-89.98	0.0	-30.1	30.1	24.4	5.62	5.349			
1,400.0	1,400.0	1,400.0	1,400.0	3.0	3.0	-89.98	0.0	-30.1	30.1	24.0	6.07	4.952			
1,500.0	1,500.0	1,500.0	1,500.0	3.3	3.3	-89.98	0.0	-30.1	30.1	23.5	6.52	4.611			
1,600.0	1,600.0	1,600.0	1,600.0	3.5	3.5	-89.98	0.0	-30.1	30.1	23.1	6.97	4.313			
1,700.0	1,700.0	1,700.0	1,700.0	3.7	3.7	-89.98	0.0	-30.1	30.1	22.6	7.42	4.052			
1,800.0	1,800.0	1,800.0	1,800.0	3.9	3.9	-89.98	0.0	-30.1	30.1	22.2	7.87	3.820			
1,900.0	1,900.0	1,900.0	1,900.0	4.2	4.2	-89.98	0.0	-30.1	30.1	21.7	8.32	3.614			
2,000.0	2,000.0	2,000.0	2,000.0	4.4	4.4	-89.98	0.0	-30.1	30.1	21.3	8.77	3.429			
2,100.0	2,100.0	2,100.0	2,100.0	4.6	4.6	-89.98	0.0	-30.1	30.1	20.8	9.22	3.261			
2,200.0	2,200.0	2,200.0	2,200.0	4.8	4.8	-89.98	0.0	-30.1	30.1	20.4	9.66	3.110			
2,300.0	2,300.0	2,300.0	2,300.0	5.1	5.1	-89.98	0.0	-30.1	30.1	19.9	10.11	2.971			
2,400.0	2,400.0	2,400.0	2,400.0	5.3	5.3	-89.98	0.0	-30.1	30.1	19.5	10.56	2.845			
2,500.0	2,500.0	2,500.0	2,500.0	5.5	5.5	-89.98	0.0	-30.1	30.1	19.0	11.01	2.729			
2,600.0	2,600.0	2,600.0	2,600.0	5.7	5.7	-89.98	0.0	-30.1	30.1	18.6	11.46	2.622			
2,700.0	2,700.0	2,700.0	2,700.0	6.0	6.0	-89.98	0.0	-30.1	30.1	18.1	11.91	2.523			
2,800.0	2,800.0	2,800.0	2,800.0	6.2	6.2	-89.98	0.0	-30.1	30.1	17.7	12.36	2.431			
2,900.0	2,900.0	2,900.0	2,900.0	6.4	6.4	-89.98	0.0	-30.1	30.1	17.2	12.81	2.346			
3,000.0	3,000.0	3,000.0	3,000.0	6.6	6.6	-89.98	0.0	-30.1	30.1	16.8	13.26	2.266			
3,100.0	3,100.0	3,100.0	3,100.0	6.9	6.9	-89.98	0.0	-30.1	30.1	16.3	13.71	2.192			
3,200.0	3,200.0	3,200.0	3,200.0	7.1	7.1	-89.98	0.0	-30.1	30.1	15.9	14.16	2.122			
3,300.0	3,300.0	3,300.0	3,300.0	7.3	7.3	-89.98	0.0	-30.1	30.1	15.4	14.61	2.057			
3,400.0	3,400.0	3,400.0	3,400.0	7.5	7.5	-89.98	0.0	-30.1	30.1	15.0	15.06	1.996			
3,500.0	3,500.0	3,500.0	3,500.0	7.8	7.8	-89.98	0.0	-30.1	30.1	14.5	15.51	1.938			
3,600.0	3,600.0	3,600.0	3,600.0	8.0	8.0	-89.98	0.0	-30.1	30.1	14.1	15.96	1.883			
3,700.0	3,700.0	3,700.0	3,700.0	8.2	8.2	-89.98	0.0	-30.1	30.1	13.6	16.41	1.832			
3,800.0	3,800.0	3,800.0	3,800.0	8.4	8.4	-89.98	0.0	-30.1	30.1	13.2	16.86	1.783			
3,900.0	3,900.0	3,900.0	3,900.0	8.7	8.7	-89.98	0.0	-30.1	30.1	12.7	17.31	1.737			
4,000.0	4,000.0	4,000.0	4,000.0	8.9	8.9	-89.98	0.0	-30.1	30.1	12.3	17.76	1.693			
4,100.0	4,100.0	4,100.0	4,100.0	9.1	9.1	-89.98	0.0	-30.1	30.1	11.8	18.21	1.651			
4,200.0	4,200.0	4,200.0	4,200.0	9.3	9.3	-89.98	0.0	-30.1	30.1	11.4	18.66	1.611			
4,300.0	4,300.0	4,300.0	4,300.0	9.6	9.6	-89.98	0.0	-30.1	30.1	10.9	19.11	1.573 CC			
4,400.0	4,400.0	4,399.4	4,399.4	9.8	9.8	-85.40	2.5	-30.8	30.9	11.4	19.55	1.582			
4,500.0	4,500.0	4,498.3	4,498.0	10.0	10.0	-73.47	9.8	-33.1	34.6	14.6	20.00	1.731			
4,600.0	4,600.0	4,596.2	4,595.0	10.2	10.2	-59.32	21.9	-36.9	43.2	22.7	20.44	2.113			
4,700.0	4,700.0	4,692.5	4,689.7	10.5	10.4	-47.62	38.4	-42.1	57.8	37.0	20.88	2.770			
4,800.0	4,800.0	4,786.8	4,781.6	10.7	10.7	-39.45	58.9	-48.5	78.5	57.2	21.32	3.680			
4,900.0	4,900.0	4,878.8	4,870.0	10.9	10.9	-34.00	83.1	-56.0	104.6	82.8	21.76	4.807			
5,000.0	5,000.0	4,968.1	4,954.5	11.1	11.2	-30.33	110.4	-64.6	135.7	113.5	22.20	6.114			
5,100.0	5,100.0	5,054.4	5,034.9	11.4	11.5	-27.78	140.4	-74.0	171.5	148.8	22.64	7.573			

CC - Min centre to center distance or convergent point, SF - min separation factor, ES - min ellipse separation

<b>Company:</b>	Great Western	<b>Local Co-ordinate Reference:</b>	Well Kodak North FD 25-119HC
<b>Project:</b>	SEC.26-T6N-R67W	<b>TVD Reference:</b>	WELL @ 4776.6ft (RKB - 16.5')
<b>Reference Site:</b>	Kodak North Pad Sec.26-T6N-R67W	<b>MD Reference:</b>	WELL @ 4776.6ft (RKB - 16.5')
<b>Site Error:</b>	0.0ft	<b>North Reference:</b>	True
<b>Reference Well:</b>	Kodak North FD 25-119HC	<b>Survey Calculation Method:</b>	Minimum Curvature
<b>Well Error:</b>	0.0ft	<b>Output errors are at</b>	2.00 sigma
<b>Reference Wellbore</b>	Wellbore #1	<b>Database:</b>	Landmark
<b>Reference Design:</b>	Plan #1 (11-21-13)	<b>Offset TVD Reference:</b>	Offset Datum

Offset Design													Offset Site Error:	0.0ft	
Survey Program: 0-MWD													Offset Well Error:		0.0ft
Reference		Offset		Semi Major Axis			Distance						Warning		
Measured Depth (ft)	Vertical Depth (ft)	Measured Depth (ft)	Vertical Depth (ft)	Reference (ft)	Offset (ft)	Highside Toolface (°)	Offset Wellbore Centre +N/-S (ft)	+E/-W (ft)	Between Centres (ft)	Between Ellipses (ft)	Minimum Separation (ft)	Separation Factor			
5,200.0	5,200.0	5,137.6	5,111.0	11.6	11.8	-25.96	172.5	-84.0	211.5	188.4	23.09	9.161			
5,300.0	5,300.0	5,217.5	5,182.6	11.8	12.2	-24.63	206.4	-94.6	255.5	232.0	23.54	10.856			
5,400.0	5,400.0	5,300.0	5,254.9	12.0	12.6	8.15	244.2	-106.4	302.2	278.4	23.80	12.696			
5,500.0	5,499.4	5,382.7	5,326.3	12.2	13.0	8.83	284.1	-118.9	343.2	319.2	24.04	14.275			
5,600.0	5,597.2	5,477.2	5,407.8	12.5	13.6	9.73	329.7	-133.2	374.9	350.8	24.12	15.544			
5,700.0	5,692.2	5,574.3	5,491.6	12.7	14.2	10.81	376.6	-147.8	396.8	372.8	24.03	16.517			
5,800.0	5,783.5	5,673.0	5,576.7	13.0	14.9	12.15	424.2	-162.7	408.9	385.1	23.78	17.192			
5,900.0	5,870.7	5,772.2	5,662.3	13.4	15.6	13.82	472.1	-177.7	412.2	388.3	23.88	17.261			
6,000.0	5,957.1	5,871.4	5,747.9	13.8	16.4	15.54	520.0	-192.7	414.4	389.9	24.49	16.922			
6,100.0	6,043.6	5,970.6	5,833.4	14.3	17.2	17.24	567.9	-207.7	417.0	391.9	25.14	16.585			
6,200.0	6,130.1	6,069.8	5,919.0	14.9	18.0	18.92	615.8	-222.6	420.0	394.1	25.85	16.247			
6,300.0	6,216.5	6,168.9	6,004.6	15.5	18.8	20.58	663.6	-237.6	423.3	396.7	26.61	15.908			
6,400.0	6,303.0	6,268.1	6,090.1	16.1	19.6	22.21	711.5	-252.6	427.0	399.6	27.43	15.568			
6,500.0	6,389.4	6,367.3	6,175.7	16.8	20.5	23.81	759.4	-267.6	431.1	402.8	28.31	15.225			
6,600.0	6,475.9	6,466.5	6,261.3	17.5	21.3	25.37	807.3	-282.5	435.4	406.2	29.26	14.882			
6,700.0	6,562.3	6,565.7	6,346.8	18.3	22.2	26.91	855.1	-297.5	440.1	409.9	30.27	14.539			
6,800.0	6,649.2	6,665.1	6,432.5	19.0	23.1	19.25	903.1	-312.5	445.1	413.8	31.31	14.217			
6,900.0	6,738.4	6,764.3	6,518.3	19.6	23.9	-6.36	951.1	-325.5	449.9	418.1	31.88	14.114			
7,000.0	6,826.3	6,864.6	6,605.5	20.0	24.6	-29.82	1,000.0	-319.6	454.7	422.5	32.24	14.106			
7,100.0	6,908.5	6,967.5	6,691.2	20.2	25.1	-45.54	1,048.4	-290.4	459.3	426.8	32.58	14.099			
7,200.0	6,980.8	7,073.1	6,770.5	20.4	25.6	-55.17	1,093.2	-237.5	463.4	430.4	33.04	14.025			
7,300.0	7,039.3	7,181.2	6,837.9	20.5	25.9	-61.04	1,131.6	-162.6	466.7	432.9	33.81	13.802			
7,400.0	7,081.2	7,291.4	6,888.2	20.5	26.1	-64.53	1,160.5	-69.2	469.0	433.9	35.10	13.363			
7,500.0	7,104.3	7,403.1	6,916.9	20.5	26.3	-66.30	1,177.4	37.1	469.9	433.0	36.99	12.706			
7,600.0	7,108.6	7,511.5	6,922.6	20.7	26.4	-66.67	1,181.4	145.1	469.6	430.2	39.37	11.927			
7,700.0	7,108.6	7,611.5	6,922.6	21.8	26.7	-66.63	1,182.2	245.1	468.9	426.8	42.12	11.132			
7,800.0	7,108.6	7,711.5	6,922.6	23.6	27.2	-66.60	1,182.9	345.1	468.3	423.0	45.30	10.337			
7,900.0	7,108.6	7,811.5	6,922.6	25.5	28.2	-66.56	1,183.7	445.1	467.6	418.8	48.82	9.578			
8,000.0	7,108.6	7,911.5	6,922.6	27.6	29.6	-66.52	1,184.4	545.1	466.9	414.3	52.61	8.875			
8,100.0	7,108.6	8,011.4	6,922.6	29.8	31.3	-66.49	1,185.2	645.1	466.3	409.6	56.62	8.234			
8,200.0	7,108.6	8,111.4	6,922.6	32.1	33.3	-66.45	1,186.0	745.0	465.6	404.8	60.81	7.657			
8,300.0	7,108.6	8,211.4	6,922.6	34.4	35.5	-66.42	1,186.7	845.0	464.9	399.8	65.13	7.138			
8,400.0	7,108.6	8,311.4	6,922.6	36.9	37.8	-66.38	1,187.5	945.0	464.2	394.7	69.57	6.673			
8,500.0	7,108.6	8,411.4	6,922.6	39.3	40.1	-66.34	1,188.2	1,045.0	463.6	389.5	74.10	6.256			
8,600.0	7,108.6	8,511.4	6,922.6	41.9	42.5	-66.31	1,189.0	1,145.0	462.9	384.2	78.71	5.881			
8,700.0	7,108.6	8,611.4	6,922.6	44.4	45.0	-66.27	1,189.8	1,245.0	462.2	378.9	83.38	5.544			
8,800.0	7,108.6	8,711.4	6,922.6	47.0	47.5	-66.24	1,190.5	1,345.0	461.6	373.5	88.10	5.239			
8,900.0	7,108.6	8,811.4	6,922.6	49.6	50.1	-66.20	1,191.3	1,445.0	460.9	368.0	92.86	4.963			
9,000.0	7,108.6	8,911.4	6,922.6	52.2	52.6	-66.16	1,192.0	1,545.0	460.2	362.6	97.67	4.712			
9,100.0	7,108.6	9,011.4	6,922.6	54.8	55.2	-66.13	1,192.8	1,645.0	459.6	357.1	102.50	4.484			
9,200.0	7,108.6	9,111.4	6,922.6	57.5	57.9	-66.09	1,193.6	1,745.0	458.9	351.5	107.36	4.274			
9,300.0	7,108.6	9,211.4	6,922.6	60.2	60.5	-66.05	1,194.3	1,845.0	458.2	346.0	112.24	4.082			
9,400.0	7,108.6	9,311.4	6,922.6	62.8	63.1	-66.01	1,195.1	1,945.0	457.6	340.4	117.15	3.906			
9,500.0	7,108.6	9,411.4	6,922.6	65.5	65.8	-65.98	1,195.8	2,045.0	456.9	334.8	122.07	3.743			
9,600.0	7,108.6	9,511.4	6,922.6	68.2	68.5	-65.94	1,196.6	2,145.0	456.2	329.2	127.00	3.592			
9,700.0	7,108.6	9,611.4	6,922.6	70.9	71.2	-65.90	1,197.4	2,245.0	455.6	323.6	131.95	3.453			
9,800.0	7,108.6	9,711.4	6,922.6	73.7	73.9	-65.86	1,198.1	2,345.0	454.9	318.0	136.91	3.323			
9,900.0	7,108.6	9,811.4	6,922.6	76.4	76.6	-65.83	1,198.9	2,445.0	454.2	312.4	141.87	3.202			
10,000.0	7,108.6	9,911.4	6,922.6	79.1	79.3	-65.79	1,199.6	2,544.9	453.6	306.7	146.85	3.089			
10,100.0	7,108.6	10,011.4	6,922.6	81.8	82.0	-65.75	1,200.4	2,644.9	452.9	301.1	151.83	2.983			
10,200.0	7,108.6	10,111.4	6,922.6	84.6	84.7	-65.71	1,201.2	2,744.9	452.2	295.4	156.82	2.884			
10,300.0	7,108.6	10,211.4	6,922.6	87.3	87.4	-65.67	1,201.9	2,844.9	451.6	289.7	161.81	2.791			

CC - Min centre to center distance or convergent point, SF - min separation factor, ES - min ellipse separation

<b>Company:</b>	Great Western	<b>Local Co-ordinate Reference:</b>	Well Kodak North FD 25-119HC
<b>Project:</b>	SEC.26-T6N-R67W	<b>TVD Reference:</b>	WELL @ 4776.6ft (RKB - 16.5')
<b>Reference Site:</b>	Kodak North Pad Sec.26-T6N-R67W	<b>MD Reference:</b>	WELL @ 4776.6ft (RKB - 16.5')
<b>Site Error:</b>	0.0ft	<b>North Reference:</b>	True
<b>Reference Well:</b>	Kodak North FD 25-119HC	<b>Survey Calculation Method:</b>	Minimum Curvature
<b>Well Error:</b>	0.0ft	<b>Output errors are at</b>	2.00 sigma
<b>Reference Wellbore</b>	Wellbore #1	<b>Database:</b>	Landmark
<b>Reference Design:</b>	Plan #1 (11-21-13)	<b>Offset TVD Reference:</b>	Offset Datum

Offset Design													Offset Site Error:	0.0 ft	
Survey Program: 0-MWD													Offset Well Error:		0.0 ft
Reference		Offset		Semi Major Axis			Distance						Warning		
Measured Depth (ft)	Vertical Depth (ft)	Measured Depth (ft)	Vertical Depth (ft)	Reference (ft)	Offset (ft)	Highside Toolface (°)	Offset Wellbore Centre +N/-S (ft)	+E/-W (ft)	Between Centres (ft)	Between Ellipses (ft)	Minimum Separation (ft)	Separation Factor			
10,400.0	7,108.6	10,311.4	6,922.6	90.1	90.2	-65.64	1,202.7	2,944.9	450.9	284.1	166.81	2.703			
10,500.0	7,108.6	10,411.4	6,922.6	92.8	92.9	-65.60	1,203.4	3,044.9	450.2	278.4	171.81	2.621			
10,600.0	7,108.6	10,511.4	6,922.6	95.6	95.6	-65.56	1,204.2	3,144.9	449.6	272.7	176.81	2.543			
10,700.0	7,108.6	10,611.4	6,922.6	98.3	98.4	-65.52	1,205.0	3,244.9	448.9	267.1	181.82	2.469			
10,800.0	7,108.6	10,711.4	6,922.6	101.1	101.1	-65.48	1,205.7	3,344.9	448.2	261.4	186.83	2.399			
10,900.0	7,108.6	10,811.4	6,922.6	103.8	103.9	-65.44	1,206.5	3,444.9	447.6	255.7	191.84	2.333			
11,000.0	7,108.6	10,911.4	6,922.6	106.6	106.6	-65.40	1,207.2	3,544.9	446.9	250.1	196.85	2.270			
11,100.0	7,108.6	11,011.4	6,922.6	109.4	109.4	-65.37	1,208.0	3,644.9	446.2	244.4	201.87	2.211			
11,200.0	7,108.6	11,111.4	6,922.6	112.1	112.2	-65.33	1,208.8	3,744.9	445.6	238.7	206.88	2.154			
11,300.0	7,108.6	11,211.4	6,922.6	114.9	114.9	-65.29	1,209.5	3,844.9	444.9	233.0	211.90	2.100			
11,400.0	7,108.6	11,311.4	6,922.6	117.7	117.7	-65.25	1,210.3	3,944.9	444.3	227.3	216.91	2.048			
11,500.0	7,108.6	11,411.4	6,922.6	120.4	120.4	-65.21	1,211.0	4,044.9	443.6	221.7	221.92	1.999			
11,600.0	7,108.6	11,511.4	6,922.6	123.2	123.2	-65.17	1,211.8	4,144.9	442.9	216.0	226.94	1.952			
11,700.0	7,108.6	11,611.4	6,922.6	126.0	126.0	-65.13	1,212.6	4,244.9	442.3	210.3	231.95	1.907			
11,800.0	7,108.6	11,711.4	6,922.6	128.7	128.7	-65.09	1,213.3	4,344.8	441.6	204.6	236.96	1.864			
11,900.0	7,108.6	11,811.3	6,922.6	131.5	131.5	-65.05	1,214.1	4,444.8	440.9	199.0	241.97	1.822			
12,000.0	7,108.6	11,911.3	6,922.6	134.3	134.3	-65.01	1,214.8	4,544.8	440.3	193.3	246.98	1.783			
12,100.0	7,108.6	12,011.3	6,922.6	137.1	137.1	-64.97	1,215.6	4,644.8	439.6	187.6	251.99	1.745			
12,200.0	7,108.6	12,111.3	6,922.6	139.9	139.8	-64.93	1,216.4	4,744.8	439.0	182.0	257.00	1.708			
12,300.0	7,108.6	12,211.3	6,922.6	142.6	142.6	-64.89	1,217.1	4,844.8	438.3	176.3	262.00	1.673			
12,400.0	7,108.6	12,311.3	6,922.6	145.4	145.4	-64.85	1,217.9	4,944.8	437.6	170.6	267.01	1.639			
12,500.0	7,108.6	12,411.3	6,922.6	148.2	148.2	-64.81	1,218.6	5,044.8	437.0	165.0	272.01	1.606			
12,600.0	7,108.6	12,511.3	6,922.6	151.0	151.0	-64.77	1,219.4	5,144.8	436.3	159.3	277.01	1.575			
12,700.0	7,108.6	12,611.3	6,922.6	153.8	153.7	-64.73	1,220.2	5,244.8	435.6	153.6	282.01	1.545			
12,800.0	7,108.6	12,711.3	6,922.6	156.6	156.5	-64.68	1,220.9	5,344.8	435.0	148.0	287.00	1.516			
12,900.0	7,108.6	12,811.3	6,922.6	159.3	159.3	-64.64	1,221.7	5,444.8	434.3	142.3	292.00	1.487 Level 3			
13,000.0	7,108.6	12,911.3	6,922.6	162.1	162.1	-64.60	1,222.4	5,544.8	433.7	136.7	296.99	1.460 Level 3			
13,100.0	7,108.6	13,011.3	6,922.6	164.9	164.9	-64.56	1,223.2	5,644.8	433.0	131.0	301.98	1.434 Level 3			
13,200.0	7,108.6	13,111.3	6,922.6	167.7	167.6	-64.52	1,224.0	5,744.8	432.3	125.4	306.96	1.408 Level 3			
13,300.0	7,108.6	13,211.3	6,922.6	170.5	170.4	-64.48	1,224.7	5,844.8	431.7	119.7	311.94	1.384 Level 3			
13,400.0	7,108.6	13,311.3	6,922.6	173.3	173.2	-64.43	1,225.5	5,944.8	431.0	114.1	316.93	1.360 Level 3			
13,500.0	7,108.6	13,411.3	6,922.6	176.1	176.0	-64.39	1,226.2	6,044.8	430.4	108.5	321.90	1.337 Level 3			
13,600.0	7,108.6	13,511.3	6,922.6	178.9	178.8	-64.35	1,227.0	6,144.7	429.7	102.8	326.88	1.315 Level 3			
13,700.0	7,108.6	13,611.3	6,922.6	181.6	181.6	-64.31	1,227.8	6,244.7	429.0	97.2	331.85	1.293 Level 3			
13,800.0	7,108.6	13,711.3	6,922.6	184.4	184.4	-64.27	1,228.5	6,344.7	428.4	91.6	336.82	1.272 Level 3			
13,900.0	7,108.6	13,811.3	6,922.6	187.2	187.2	-64.22	1,229.3	6,444.7	427.7	85.9	341.79	1.251 Level 3			
14,000.0	7,108.6	13,911.3	6,922.6	190.0	189.9	-64.18	1,230.0	6,544.7	427.1	80.3	346.75	1.232 Level 2			
14,100.0	7,108.6	14,011.3	6,922.6	192.8	192.7	-64.14	1,230.8	6,644.7	426.4	74.7	351.71	1.212 Level 2			
14,200.0	7,108.6	14,111.3	6,922.6	195.6	195.5	-64.10	1,231.6	6,744.7	425.8	69.1	356.67	1.194 Level 2			
14,300.0	7,108.6	14,211.3	6,922.6	198.4	198.3	-64.05	1,232.3	6,844.7	425.1	63.5	361.62	1.176 Level 2			
14,400.0	7,108.6	14,311.3	6,922.6	201.2	201.1	-64.01	1,233.1	6,944.7	424.4	57.9	366.57	1.158 Level 2			
14,500.0	7,108.6	14,411.3	6,922.6	204.0	203.9	-63.97	1,233.8	7,044.7	423.8	52.3	371.52	1.141 Level 2			
14,600.0	7,108.6	14,511.3	6,922.6	206.8	206.7	-63.92	1,234.6	7,144.7	423.1	46.7	376.46	1.124 Level 2			
14,700.0	7,108.6	14,611.3	6,922.6	209.6	209.5	-63.88	1,235.4	7,244.7	422.5	41.1	381.40	1.108 Level 2			
14,800.0	7,108.6	14,711.3	6,922.6	212.4	212.3	-63.84	1,236.1	7,344.7	421.8	35.5	386.34	1.092 Level 2			
14,900.0	7,108.6	14,811.3	6,922.6	215.2	215.1	-63.79	1,236.9	7,444.7	421.2	29.9	391.27	1.076 Level 2			
15,000.0	7,108.6	14,911.3	6,922.6	218.0	217.9	-63.75	1,237.6	7,544.7	420.5	24.3	396.20	1.061 Level 2			
15,100.0	7,108.6	15,011.3	6,922.6	220.7	220.7	-63.70	1,238.4	7,644.7	419.9	18.7	401.13	1.047 Level 2			
15,200.0	7,108.6	15,111.3	6,922.6	223.5	223.5	-63.66	1,239.2	7,744.7	419.2	13.2	406.05	1.032 Level 2			
15,300.0	7,108.6	15,211.3	6,922.6	226.3	226.3	-63.61	1,239.9	7,844.7	418.5	7.6	410.97	1.018 Level 2			
15,400.0	7,108.6	15,311.3	6,922.6	229.1	229.0	-63.57	1,240.7	7,944.6	417.9	2.0	415.88	1.005 Level 2			
15,500.0	7,108.6	15,411.3	6,922.6	231.9	231.8	-63.53	1,241.4	8,044.6	417.2	-3.6	420.80	0.992 Level 1			

CC - Min centre to center distance or convergent point, SF - min separation factor, ES - min ellipse separation

<b>Company:</b>	Great Western	<b>Local Co-ordinate Reference:</b>	Well Kodak North FD 25-119HC
<b>Project:</b>	SEC.26-T6N-R67W	<b>TVD Reference:</b>	WELL @ 4776.6ft (RKB - 16.5')
<b>Reference Site:</b>	Kodak North Pad Sec.26-T6N-R67W	<b>MD Reference:</b>	WELL @ 4776.6ft (RKB - 16.5')
<b>Site Error:</b>	0.0ft	<b>North Reference:</b>	True
<b>Reference Well:</b>	Kodak North FD 25-119HC	<b>Survey Calculation Method:</b>	Minimum Curvature
<b>Well Error:</b>	0.0ft	<b>Output errors are at</b>	2.00 sigma
<b>Reference Wellbore</b>	Wellbore #1	<b>Database:</b>	Landmark
<b>Reference Design:</b>	Plan #1 (11-21-13)	<b>Offset TVD Reference:</b>	Offset Datum

<b>Offset Design</b> Kodak North Pad Sec.26-T6N-R67W - Kodak North FD 25-079HN - Wellbore #1 - Plan #1 (11-21-13)													<b>Offset Site Error:</b>	0.0 ft
Survey Program: 0-MWD													<b>Offset Well Error:</b>	0.0 ft
Reference		Offset		Semi Major Axis			Distance						Warning	
Measured Depth (ft)	Vertical Depth (ft)	Measured Depth (ft)	Vertical Depth (ft)	Reference (ft)	Offset (ft)	Highside Toolface (°)	Offset Wellbore Centre +N/-S (ft)	+E/-W (ft)	Between Centres (ft)	Between Ellipses (ft)	Minimum Separation (ft)	Separation Factor		
15,600.0	7,108.6	15,511.2	6,922.6	234.7	234.6	-63.48	1,242.2	8,144.6	416.6	-9.1	425.70	0.979	Level 1	
15,607.5	7,108.6	15,518.7	6,922.6	234.9	234.8	-63.48	1,242.3	8,152.1	416.5	-9.5	426.07	0.978	Level 1, ES, SF	

<b>Company:</b>	Great Western	<b>Local Co-ordinate Reference:</b>	Well Kodak North FD 25-119HC
<b>Project:</b>	SEC.26-T6N-R67W	<b>TVD Reference:</b>	WELL @ 4776.6ft (RKB - 16.5')
<b>Reference Site:</b>	Kodak North Pad Sec.26-T6N-R67W	<b>MD Reference:</b>	WELL @ 4776.6ft (RKB - 16.5')
<b>Site Error:</b>	0.0ft	<b>North Reference:</b>	True
<b>Reference Well:</b>	Kodak North FD 25-119HC	<b>Survey Calculation Method:</b>	Minimum Curvature
<b>Well Error:</b>	0.0ft	<b>Output errors are at</b>	2.00 sigma
<b>Reference Wellbore</b>	Wellbore #1	<b>Database:</b>	Landmark
<b>Reference Design:</b>	Plan #1 (11-21-13)	<b>Offset TVD Reference:</b>	Offset Datum

Offset Design													Offset Site Error:	0.0 ft	
Survey Program: 0-MWD													Offset Well Error:		0.0 ft
Reference				Offset			Semi Major Axis			Distance				Warning	
Measured Depth (ft)	Vertical Depth (ft)	Measured Depth (ft)	Vertical Depth (ft)	Reference (ft)	Offset (ft)	Highside Toolface (°)	Offset Wellbore Centre +N/-S (ft)	+E/-W (ft)	Between Centres (ft)	Between Ellipses (ft)	Minimum Separation (ft)	Separation Factor			
0.0	0.0	0.0	0.0	0.0	0.0	-180.00	-100.2	0.0	100.2						
100.0	100.0	100.0	100.0	0.1	0.1	-180.00	-100.2	0.0	100.2	99.9	0.22	445.612			
200.0	200.0	200.0	200.0	0.3	0.3	-180.00	-100.2	0.0	100.2	99.5	0.67	148.537			
300.0	300.0	300.0	300.0	0.6	0.6	-180.00	-100.2	0.0	100.2	99.0	1.12	89.122			
400.0	400.0	400.0	400.0	0.8	0.8	-180.00	-100.2	0.0	100.2	98.6	1.57	63.659			
500.0	500.0	500.0	500.0	1.0	1.0	-180.00	-100.2	0.0	100.2	98.1	2.02	49.512			
600.0	600.0	600.0	600.0	1.2	1.2	-180.00	-100.2	0.0	100.2	97.7	2.47	40.510			
700.0	700.0	700.0	700.0	1.5	1.5	-180.00	-100.2	0.0	100.2	97.2	2.92	34.278			
800.0	800.0	800.0	800.0	1.7	1.7	-180.00	-100.2	0.0	100.2	96.8	3.37	29.707			
900.0	900.0	900.0	900.0	1.9	1.9	-180.00	-100.2	0.0	100.2	96.3	3.82	26.212			
1,000.0	1,000.0	1,000.0	1,000.0	2.1	2.1	-180.00	-100.2	0.0	100.2	95.9	4.27	23.453			
1,100.0	1,100.0	1,100.0	1,100.0	2.4	2.4	-180.00	-100.2	0.0	100.2	95.4	4.72	21.220			
1,200.0	1,200.0	1,200.0	1,200.0	2.6	2.6	-180.00	-100.2	0.0	100.2	95.0	5.17	19.374			
1,300.0	1,300.0	1,300.0	1,300.0	2.8	2.8	-180.00	-100.2	0.0	100.2	94.5	5.62	17.824			
1,400.0	1,400.0	1,400.0	1,400.0	3.0	3.0	-180.00	-100.2	0.0	100.2	94.1	6.07	16.504			
1,500.0	1,500.0	1,500.0	1,500.0	3.3	3.3	-180.00	-100.2	0.0	100.2	93.6	6.52	15.366			
1,600.0	1,600.0	1,600.0	1,600.0	3.5	3.5	-180.00	-100.2	0.0	100.2	93.2	6.97	14.375			
1,700.0	1,700.0	1,700.0	1,700.0	3.7	3.7	-180.00	-100.2	0.0	100.2	92.7	7.42	13.503			
1,800.0	1,800.0	1,800.0	1,800.0	3.9	3.9	-180.00	-100.2	0.0	100.2	92.3	7.87	12.732			
1,900.0	1,900.0	1,900.0	1,900.0	4.2	4.2	-180.00	-100.2	0.0	100.2	91.8	8.32	12.044			
2,000.0	2,000.0	2,000.0	2,000.0	4.4	4.4	-180.00	-100.2	0.0	100.2	91.4	8.77	11.426			
2,100.0	2,100.0	2,100.0	2,100.0	4.6	4.6	-180.00	-100.2	0.0	100.2	90.9	9.22	10.869			
2,200.0	2,200.0	2,200.0	2,200.0	4.8	4.8	-180.00	-100.2	0.0	100.2	90.5	9.66	10.363			
2,300.0	2,300.0	2,300.0	2,300.0	5.1	5.1	-180.00	-100.2	0.0	100.2	90.0	10.11	9.902			
2,400.0	2,400.0	2,400.0	2,400.0	5.3	5.3	-180.00	-100.2	0.0	100.2	89.6	10.56	9.481			
2,500.0	2,500.0	2,500.0	2,500.0	5.5	5.5	-180.00	-100.2	0.0	100.2	89.1	11.01	9.094			
2,600.0	2,600.0	2,600.0	2,600.0	5.7	5.7	-180.00	-100.2	0.0	100.2	88.7	11.46	8.737			
2,700.0	2,700.0	2,700.0	2,700.0	6.0	6.0	-180.00	-100.2	0.0	100.2	88.2	11.91	8.408			
2,800.0	2,800.0	2,800.0	2,800.0	6.2	6.2	-180.00	-100.2	0.0	100.2	87.8	12.36	8.102			
2,900.0	2,900.0	2,900.0	2,900.0	6.4	6.4	-180.00	-100.2	0.0	100.2	87.3	12.81	7.818			
3,000.0	3,000.0	3,000.0	3,000.0	6.6	6.6	-180.00	-100.2	0.0	100.2	86.9	13.26	7.553			
3,100.0	3,100.0	3,100.0	3,100.0	6.9	6.9	-180.00	-100.2	0.0	100.2	86.4	13.71	7.305			
3,200.0	3,200.0	3,200.0	3,200.0	7.1	7.1	-180.00	-100.2	0.0	100.2	86.0	14.16	7.073			
3,300.0	3,300.0	3,300.0	3,300.0	7.3	7.3	-180.00	-100.2	0.0	100.2	85.5	14.61	6.856			
3,400.0	3,400.0	3,400.0	3,400.0	7.5	7.5	-180.00	-100.2	0.0	100.2	85.1	15.06	6.651			
3,500.0	3,500.0	3,500.0	3,500.0	7.8	7.8	-180.00	-100.2	0.0	100.2	84.6	15.51	6.458			
3,600.0	3,600.0	3,600.0	3,600.0	8.0	8.0	-180.00	-100.2	0.0	100.2	84.2	15.96	6.276			
3,700.0	3,700.0	3,700.0	3,700.0	8.2	8.2	-180.00	-100.2	0.0	100.2	83.8	16.41	6.104			
3,800.0	3,800.0	3,800.0	3,800.0	8.4	8.4	-180.00	-100.2	0.0	100.2	83.3	16.86	5.941			
3,900.0	3,900.0	3,900.0	3,900.0	8.7	8.7	-180.00	-100.2	0.0	100.2	82.9	17.31	5.787			
4,000.0	4,000.0	4,000.0	4,000.0	8.9	8.9	-180.00	-100.2	0.0	100.2	82.4	17.76	5.641			
4,100.0	4,100.0	4,100.0	4,100.0	9.1	9.1	-180.00	-100.2	0.0	100.2	82.0	18.21	5.501			
4,200.0	4,200.0	4,200.0	4,200.0	9.3	9.3	-180.00	-100.2	0.0	100.2	81.5	18.66	5.369			
4,300.0	4,300.0	4,300.0	4,300.0	9.6	9.6	-180.00	-100.2	0.0	100.2	81.1	19.11	5.242			
4,400.0	4,400.0	4,400.0	4,400.0	9.8	9.8	-180.00	-100.2	0.0	100.2	80.6	19.55	5.122			
4,500.0	4,500.0	4,500.0	4,500.0	10.0	10.0	-180.00	-100.2	0.0	100.2	80.2	20.00	5.007			
4,600.0	4,600.0	4,600.0	4,600.0	10.2	10.2	-180.00	-100.2	0.0	100.2	79.7	20.45	4.897			
4,700.0	4,700.0	4,700.0	4,700.0	10.5	10.5	-180.00	-100.2	0.0	100.2	79.3	20.90	4.792			
4,800.0	4,800.0	4,800.0	4,800.0	10.7	10.7	-180.00	-100.2	0.0	100.2	78.8	21.35	4.691			
4,900.0	4,900.0	4,900.0	4,900.0	10.9	10.9	-180.00	-100.2	0.0	100.2	78.4	21.80	4.594			
5,000.0	5,000.0	5,000.0	5,000.0	11.1	11.1	-180.00	-100.2	0.0	100.2	77.9	22.25	4.501			
5,100.0	5,100.0	5,100.0	5,100.0	11.4	11.4	-180.00	-100.2	0.0	100.2	77.5	22.70	4.412			

CC - Min centre to center distance or convergent point, SF - min separation factor, ES - min ellipse separation

<b>Company:</b>	Great Western	<b>Local Co-ordinate Reference:</b>	Well Kodak North FD 25-119HC
<b>Project:</b>	SEC.26-T6N-R67W	<b>TVD Reference:</b>	WELL @ 4776.6ft (RKB - 16.5')
<b>Reference Site:</b>	Kodak North Pad Sec.26-T6N-R67W	<b>MD Reference:</b>	WELL @ 4776.6ft (RKB - 16.5')
<b>Site Error:</b>	0.0ft	<b>North Reference:</b>	True
<b>Reference Well:</b>	Kodak North FD 25-119HC	<b>Survey Calculation Method:</b>	Minimum Curvature
<b>Well Error:</b>	0.0ft	<b>Output errors are at</b>	2.00 sigma
<b>Reference Wellbore</b>	Wellbore #1	<b>Database:</b>	Landmark
<b>Reference Design:</b>	Plan #1 (11-21-13)	<b>Offset TVD Reference:</b>	Offset Datum

Offset Design													Offset Site Error:	0.0ft	
Survey Program: 0-MWD													Offset Well Error:		0.0ft
Reference		Offset		Semi Major Axis			Distance						Warning		
Measured Depth (ft)	Vertical Depth (ft)	Measured Depth (ft)	Vertical Depth (ft)	Reference (ft)	Offset (ft)	Highside Toolface (°)	Offset Wellbore Centre +N/-S (ft)	+E/-W (ft)	Between Centres (ft)	Between Ellipses (ft)	Minimum Separation (ft)	Separation Factor			
5,200.0	5,200.0	5,200.0	5,200.0	11.6	11.6	-180.00	-100.2	0.0	100.2	77.0	23.15	4.326			
5,300.0	5,300.0	5,300.0	5,300.0	11.8	11.8	-180.00	-100.2	0.0	100.2	76.6	23.60	4.244	CC		
5,327.9	5,327.9	5,327.9	5,327.9	11.9	11.9	-148.18	-100.2	0.0	100.3	76.6	23.72	4.229			
5,400.0	5,400.0	5,400.0	5,400.0	12.0	12.0	-148.48	-100.2	0.0	101.3	77.2	24.03	4.215			
5,500.0	5,499.4	5,510.5	5,510.1	12.2	12.3	-148.99	-94.6	-4.9	105.1	80.8	24.33	4.320			
5,600.0	5,597.2	5,621.3	5,618.6	12.5	12.5	-147.50	-77.9	-19.7	107.7	83.2	24.50	4.396			
5,700.0	5,692.2	5,731.8	5,722.8	12.7	12.8	-144.14	-50.5	-43.9	109.2	84.6	24.62	4.436			
5,800.0	5,783.5	5,841.0	5,820.0	13.0	13.2	-139.03	-13.3	-76.8	110.2	85.4	24.84	4.436			
5,900.0	5,870.7	5,940.7	5,905.7	13.4	13.6	-135.24	24.7	-110.4	114.8	89.4	25.42	4.518			
6,000.0	5,957.1	6,040.3	5,991.5	13.8	14.0	-132.33	62.7	-144.0	120.9	94.5	26.37	4.585			
6,100.0	6,043.6	6,139.9	6,077.3	14.3	14.6	-129.71	100.7	-177.6	127.2	99.8	27.42	4.639			
6,200.0	6,130.1	6,239.6	6,163.0	14.9	15.2	-127.34	138.7	-211.2	133.8	105.2	28.59	4.680			
6,300.0	6,216.5	6,339.2	6,248.8	15.5	15.8	-125.20	176.7	-244.8	140.6	110.7	29.85	4.709			
6,400.0	6,303.0	6,438.8	6,334.5	16.1	16.5	-123.25	214.7	-278.5	147.5	116.3	31.21	4.728			
6,500.0	6,389.4	6,546.8	6,428.2	16.8	17.2	-122.19	256.2	-312.4	153.6	121.0	32.55	4.718			
6,600.0	6,475.9	6,663.5	6,533.8	17.5	17.8	-129.47	303.3	-324.3	149.7	116.9	32.78	4.567			
6,700.0	6,562.3	6,764.1	6,624.5	18.3	18.1	-145.17	344.0	-309.9	142.7	111.5	31.28	4.564			
6,715.3	6,575.6	6,777.7	6,636.5	18.4	18.1	-149.26	349.4	-306.2	142.5	111.6	30.94	4.607			
6,800.0	6,649.2	6,845.0	6,693.7	19.0	18.3	-173.14	375.2	-282.2	150.3	120.9	29.42	5.108			
6,900.0	6,738.4	6,917.6	6,750.9	19.6	18.4	144.87	401.2	-245.9	176.0	146.0	29.96	5.875			
7,000.0	6,826.3	6,986.2	6,799.2	20.0	18.4	109.98	423.2	-202.6	209.3	177.8	31.51	6.642			
7,100.0	6,908.5	7,050.0	6,838.1	20.2	18.5	86.81	441.1	-155.4	242.9	210.7	32.18	7.549			
7,200.0	6,980.8	7,116.1	6,871.4	20.4	18.4	72.24	456.6	-100.6	272.8	241.1	31.78	8.585			
7,300.0	7,039.3	7,175.0	6,894.4	20.5	18.4	63.48	467.4	-47.5	297.1	266.3	30.83	9.637			
7,400.0	7,081.2	7,240.7	6,912.3	20.5	18.4	58.23	476.0	15.1	314.4	284.2	30.20	10.409			
7,500.0	7,104.3	7,300.0	6,920.9	20.5	18.6	55.71	480.5	73.6	324.2	293.7	30.45	10.644			
7,600.0	7,108.6	7,377.6	6,922.6	20.7	19.7	55.26	482.1	151.1	326.4	294.3	32.08	10.174			
7,700.0	7,108.6	7,477.6	6,922.6	21.8	21.3	55.30	483.1	251.1	326.7	292.1	34.63	9.435			
7,800.0	7,108.6	7,577.6	6,922.6	23.6	23.2	55.35	484.1	351.1	327.1	289.5	37.59	8.703			
7,900.0	7,108.6	7,677.6	6,922.6	25.5	25.2	55.39	485.2	451.1	327.5	286.6	40.88	8.012			
8,000.0	7,108.6	7,777.6	6,922.6	27.6	27.3	55.44	486.2	551.1	327.9	283.4	44.42	7.380			
8,100.0	7,108.6	7,877.6	6,922.6	29.8	29.6	55.48	487.2	651.1	328.2	280.1	48.17	6.814			
8,200.0	7,108.6	7,977.6	6,922.6	32.1	31.9	55.53	488.3	751.1	328.6	276.5	52.08	6.310			
8,300.0	7,108.6	8,077.6	6,922.6	34.4	34.3	55.57	489.3	851.1	329.0	272.9	56.12	5.863			
8,400.0	7,108.6	8,177.6	6,922.6	36.9	36.8	55.62	490.3	951.1	329.4	269.1	60.26	5.466			
8,500.0	7,108.6	8,277.6	6,922.6	39.3	39.3	55.66	491.4	1,051.1	329.7	265.3	64.48	5.114			
8,600.0	7,108.6	8,377.6	6,922.6	41.9	41.8	55.71	492.4	1,151.1	330.1	261.3	68.77	4.800			
8,700.0	7,108.6	8,477.6	6,922.6	44.4	44.4	55.75	493.5	1,251.1	330.5	257.4	73.12	4.520			
8,800.0	7,108.6	8,577.6	6,922.6	47.0	47.0	55.79	494.5	1,351.1	330.9	253.3	77.52	4.268			
8,900.0	7,108.6	8,677.6	6,922.6	49.6	49.6	55.84	495.5	1,451.1	331.2	249.3	81.97	4.041			
9,000.0	7,108.6	8,777.6	6,922.6	52.2	52.3	55.88	496.6	1,551.0	331.6	245.2	86.44	3.836			
9,100.0	7,108.6	8,877.6	6,922.6	54.8	54.9	55.93	497.6	1,651.0	332.0	241.0	90.95	3.650			
9,200.0	7,108.6	8,977.6	6,922.6	57.5	57.6	55.97	498.6	1,751.0	332.4	236.9	95.49	3.481			
9,300.0	7,108.6	9,077.6	6,922.6	60.2	60.3	56.01	499.7	1,851.0	332.7	232.7	100.05	3.326			
9,400.0	7,108.6	9,177.6	6,922.6	62.8	63.0	56.06	500.7	1,951.0	333.1	228.5	104.64	3.184			
9,500.0	7,108.6	9,277.6	6,922.6	65.5	65.7	56.10	501.7	2,051.0	333.5	224.3	109.24	3.053			
9,600.0	7,108.6	9,377.6	6,922.6	68.2	68.4	56.14	502.8	2,151.0	333.9	220.0	113.86	2.932			
9,700.0	7,108.6	9,477.6	6,922.6	70.9	71.1	56.19	503.8	2,251.0	334.3	215.8	118.50	2.821			
9,800.0	7,108.6	9,577.6	6,922.6	73.7	73.8	56.23	504.8	2,351.0	334.6	211.5	123.15	2.717			
9,900.0	7,108.6	9,677.6	6,922.6	76.4	76.5	56.27	505.9	2,451.0	335.0	207.2	127.82	2.621			
10,000.0	7,108.6	9,777.6	6,922.6	79.1	79.3	56.32	506.9	2,551.0	335.4	202.9	132.49	2.531			
10,100.0	7,108.6	9,877.6	6,922.6	81.8	82.0	56.36	508.0	2,651.0	335.8	198.6	137.18	2.448			

CC - Min centre to center distance or convergent point, SF - min separation factor, ES - min ellipse separation

<b>Company:</b>	Great Western	<b>Local Co-ordinate Reference:</b>	Well Kodak North FD 25-119HC
<b>Project:</b>	SEC.26-T6N-R67W	<b>TVD Reference:</b>	WELL @ 4776.6ft (RKB - 16.5')
<b>Reference Site:</b>	Kodak North Pad Sec.26-T6N-R67W	<b>MD Reference:</b>	WELL @ 4776.6ft (RKB - 16.5')
<b>Site Error:</b>	0.0ft	<b>North Reference:</b>	True
<b>Reference Well:</b>	Kodak North FD 25-119HC	<b>Survey Calculation Method:</b>	Minimum Curvature
<b>Well Error:</b>	0.0ft	<b>Output errors are at</b>	2.00 sigma
<b>Reference Wellbore</b>	Wellbore #1	<b>Database:</b>	Landmark
<b>Reference Design:</b>	Plan #1 (11-21-13)	<b>Offset TVD Reference:</b>	Offset Datum

Offset Design													Offset Site Error:	0.0ft	
Survey Program: 0-MWD													Offset Well Error:		0.0ft
Reference		Offset		Semi Major Axis			Distance						Warning		
Measured Depth (ft)	Vertical Depth (ft)	Measured Depth (ft)	Vertical Depth (ft)	Reference (ft)	Offset (ft)	Highside Toolface (°)	Offset Wellbore Centre +N/-S (ft)	+E/-W (ft)	Between Centres (ft)	Between Ellipses (ft)	Minimum Separation (ft)	Separation Factor			
10,200.0	7,108.6	9,977.6	6,922.6	84.6	84.8	56.40	509.0	2,751.0	336.1	194.3	141.88	2.369			
10,300.0	7,108.6	10,077.6	6,922.6	87.3	87.5	56.45	510.0	2,851.0	336.5	189.9	146.60	2.296			
10,400.0	7,108.6	10,177.6	6,922.6	90.1	90.3	56.49	511.1	2,951.0	336.9	185.6	151.32	2.226			
10,500.0	7,108.6	10,277.6	6,922.6	92.8	93.0	56.53	512.1	3,051.0	337.3	181.2	156.05	2.161			
10,600.0	7,108.6	10,377.6	6,922.6	95.6	95.8	56.57	513.1	3,150.9	337.7	176.9	160.79	2.100			
10,700.0	7,108.6	10,477.6	6,922.6	98.3	98.5	56.62	514.2	3,250.9	338.0	172.5	165.53	2.042			
10,800.0	7,108.6	10,577.6	6,922.6	101.1	101.3	56.66	515.2	3,350.9	338.4	168.1	170.29	1.987			
10,900.0	7,108.6	10,677.6	6,922.6	103.8	104.1	56.70	516.2	3,450.9	338.8	163.7	175.05	1.935			
11,000.0	7,108.6	10,777.6	6,922.6	106.6	106.8	56.74	517.3	3,550.9	339.2	159.4	179.82	1.886			
11,100.0	7,108.6	10,877.6	6,922.6	109.4	109.6	56.79	518.3	3,650.9	339.6	155.0	184.60	1.839			
11,200.0	7,108.6	10,977.6	6,922.6	112.1	112.4	56.83	519.4	3,750.9	339.9	150.6	189.38	1.795			
11,300.0	7,108.6	11,077.6	6,922.6	114.9	115.1	56.87	520.4	3,850.9	340.3	146.1	194.17	1.753			
11,400.0	7,108.6	11,177.6	6,922.6	117.7	117.9	56.91	521.4	3,950.9	340.7	141.7	198.97	1.712			
11,500.0	7,108.6	11,277.6	6,922.6	120.4	120.7	56.95	522.5	4,050.9	341.1	137.3	203.77	1.674			
11,600.0	7,108.6	11,377.6	6,922.6	123.2	123.5	56.99	523.5	4,150.9	341.5	132.9	208.58	1.637			
11,700.0	7,108.6	11,477.6	6,922.6	126.0	126.2	57.04	524.5	4,250.9	341.8	128.4	213.39	1.602			
11,800.0	7,108.6	11,577.6	6,922.6	128.7	129.0	57.08	525.6	4,350.9	342.2	124.0	218.21	1.568			
11,900.0	7,108.6	11,677.6	6,922.6	131.5	131.8	57.12	526.6	4,450.9	342.6	119.6	223.04	1.536			
12,000.0	7,108.6	11,777.6	6,922.6	134.3	134.6	57.16	527.6	4,550.9	343.0	115.1	227.87	1.505			
12,100.0	7,108.6	11,877.6	6,922.6	137.1	137.4	57.20	528.7	4,650.8	343.4	110.7	232.70	1.476 Level 3			
12,200.0	7,108.6	11,977.6	6,922.6	139.9	140.1	57.24	529.7	4,750.8	343.7	106.2	237.55	1.447 Level 3			
12,300.0	7,108.6	12,077.6	6,922.6	142.6	142.9	57.28	530.8	4,850.8	344.1	101.7	242.39	1.420 Level 3			
12,400.0	7,108.6	12,177.6	6,922.6	145.4	145.7	57.32	531.8	4,950.8	344.5	97.3	247.24	1.393 Level 3			
12,500.0	7,108.6	12,277.6	6,922.6	148.2	148.5	57.36	532.8	5,050.8	344.9	92.8	252.10	1.368 Level 3			
12,600.0	7,108.6	12,377.6	6,922.6	151.0	151.3	57.40	533.9	5,150.8	345.3	88.3	256.96	1.344 Level 3			
12,700.0	7,108.6	12,477.6	6,922.6	153.8	154.1	57.45	534.9	5,250.8	345.7	83.8	261.83	1.320 Level 3			
12,800.0	7,108.6	12,577.6	6,922.6	156.6	156.9	57.49	535.9	5,350.8	346.0	79.3	266.70	1.298 Level 3			
12,900.0	7,108.6	12,677.6	6,922.6	159.3	159.7	57.53	537.0	5,450.8	346.4	74.9	271.57	1.276 Level 3			
13,000.0	7,108.6	12,777.6	6,922.6	162.1	162.4	57.57	538.0	5,550.8	346.8	70.4	276.45	1.255 Level 3			
13,100.0	7,108.6	12,877.6	6,922.6	164.9	165.2	57.61	539.0	5,650.8	347.2	65.9	281.33	1.234 Level 2			
13,200.0	7,108.6	12,977.6	6,922.6	167.7	168.0	57.65	540.1	5,750.8	347.6	61.4	286.22	1.214 Level 2			
13,300.0	7,108.6	13,077.6	6,922.6	170.5	170.8	57.69	541.1	5,850.8	348.0	56.8	291.11	1.195 Level 2			
13,400.0	7,108.6	13,177.6	6,922.6	173.3	173.6	57.73	542.1	5,950.8	348.3	52.3	296.01	1.177 Level 2			
13,500.0	7,108.6	13,277.6	6,922.6	176.1	176.4	57.77	543.2	6,050.8	348.7	47.8	300.91	1.159 Level 2			
13,600.0	7,108.6	13,377.6	6,922.6	178.9	179.2	57.81	544.2	6,150.8	349.1	43.3	305.81	1.142 Level 2			
13,700.0	7,108.6	13,477.6	6,922.6	181.6	182.0	57.85	545.3	6,250.7	349.5	38.8	310.72	1.125 Level 2			
13,800.0	7,108.6	13,577.6	6,922.6	184.4	184.8	57.89	546.3	6,350.7	349.9	34.2	315.64	1.108 Level 2			
13,900.0	7,108.6	13,677.6	6,922.6	187.2	187.6	57.93	547.3	6,450.7	350.3	29.7	320.55	1.093 Level 2			
14,000.0	7,108.6	13,777.6	6,922.6	190.0	190.4	57.96	548.4	6,550.7	350.7	25.2	325.47	1.077 Level 2			
14,100.0	7,108.6	13,877.6	6,922.6	192.8	193.2	58.00	549.4	6,650.7	351.0	20.6	330.40	1.062 Level 2			
14,200.0	7,108.6	13,977.6	6,922.6	195.6	195.9	58.04	550.4	6,750.7	351.4	16.1	335.33	1.048 Level 2			
14,300.0	7,108.6	14,077.6	6,922.6	198.4	198.7	58.08	551.5	6,850.7	351.8	11.5	340.26	1.034 Level 2			
14,400.0	7,108.6	14,177.6	6,922.6	201.2	201.5	58.12	552.5	6,950.7	352.2	7.0	345.19	1.020 Level 2			
14,500.0	7,108.6	14,277.6	6,922.6	204.0	204.3	58.16	553.5	7,050.7	352.6	2.4	350.13	1.007 Level 2			
14,600.0	7,108.6	14,377.6	6,922.6	206.8	207.1	58.20	554.6	7,150.7	353.0	-2.1	355.08	0.994 Level 1			
14,700.0	7,108.6	14,477.6	6,922.6	209.6	209.9	58.24	555.6	7,250.7	353.4	-6.7	360.03	0.981 Level 1			
14,800.0	7,108.6	14,577.6	6,922.6	212.4	212.7	58.28	556.7	7,350.7	353.7	-11.2	364.98	0.969 Level 1			
14,900.0	7,108.6	14,677.6	6,922.6	215.2	215.5	58.32	557.7	7,450.7	354.1	-15.8	369.93	0.957 Level 1			
15,000.0	7,108.6	14,777.6	6,922.6	218.0	218.3	58.35	558.7	7,550.7	354.5	-20.4	374.89	0.946 Level 1			
15,100.0	7,108.6	14,877.6	6,922.6	220.7	221.1	58.39	559.8	7,650.7	354.9	-25.0	379.85	0.934 Level 1			
15,200.0	7,108.6	14,977.6	6,922.6	223.5	223.9	58.43	560.8	7,750.6	355.3	-29.5	384.82	0.923 Level 1			
15,300.0	7,108.6	15,077.6	6,922.6	226.3	226.7	58.47	561.8	7,850.6	355.7	-34.1	389.78	0.912 Level 1			

CC - Min centre to center distance or convergent point, SF - min separation factor, ES - min ellipse separation

<b>Company:</b>	Great Western	<b>Local Co-ordinate Reference:</b>	Well Kodak North FD 25-119HC
<b>Project:</b>	SEC.26-T6N-R67W	<b>TVD Reference:</b>	WELL @ 4776.6ft (RKB - 16.5')
<b>Reference Site:</b>	Kodak North Pad Sec.26-T6N-R67W	<b>MD Reference:</b>	WELL @ 4776.6ft (RKB - 16.5')
<b>Site Error:</b>	0.0ft	<b>North Reference:</b>	True
<b>Reference Well:</b>	Kodak North FD 25-119HC	<b>Survey Calculation Method:</b>	Minimum Curvature
<b>Well Error:</b>	0.0ft	<b>Output errors are at</b>	2.00 sigma
<b>Reference Wellbore</b>	Wellbore #1	<b>Database:</b>	Landmark
<b>Reference Design:</b>	Plan #1 (11-21-13)	<b>Offset TVD Reference:</b>	Offset Datum

<b>Offset Design</b> Kodak North Pad Sec.26-T6N-R67W - Kodak North FD 25-122HN - Wellbore #1 - Plan #1 (11-21-13)													<b>Offset Site Error:</b>	0.0 ft
Survey Program: 0-MWD													<b>Offset Well Error:</b>	0.0 ft
Reference		Offset		Semi Major Axis			Distance						Warning	
Measured Depth (ft)	Vertical Depth (ft)	Measured Depth (ft)	Vertical Depth (ft)	Reference (ft)	Offset (ft)	Highside Toolface (°)	Offset Wellbore Centre +N/-S (ft)	+E/-W (ft)	Between Centres (ft)	Between Ellipses (ft)	Minimum Separation (ft)	Separation Factor		
15,400.0	7,108.6	15,177.6	6,922.6	229.1	229.5	58.51	562.9	7,950.6	356.1	-38.7	394.76	0.902	Level 1	
15,500.0	7,108.6	15,277.6	6,922.6	231.9	232.3	58.55	563.9	8,050.6	356.4	-43.3	399.73	0.892	Level 1	
15,600.0	7,108.6	15,377.6	6,922.6	234.7	235.1	58.58	564.9	8,150.6	356.8	-47.9	404.71	0.882	Level 1	
15,607.5	7,108.6	15,382.5	6,922.6	234.9	235.2	58.59	565.0	8,155.6	356.9	-48.1	405.02	0.881	Level 1, ES, SF	

<b>Company:</b>	Great Western	<b>Local Co-ordinate Reference:</b>	Well Kodak North FD 25-119HC
<b>Project:</b>	SEC.26-T6N-R67W	<b>TVD Reference:</b>	WELL @ 4776.6ft (RKB - 16.5')
<b>Reference Site:</b>	Kodak North Pad Sec.26-T6N-R67W	<b>MD Reference:</b>	WELL @ 4776.6ft (RKB - 16.5')
<b>Site Error:</b>	0.0ft	<b>North Reference:</b>	True
<b>Reference Well:</b>	Kodak North FD 25-119HC	<b>Survey Calculation Method:</b>	Minimum Curvature
<b>Well Error:</b>	0.0ft	<b>Output errors are at</b>	2.00 sigma
<b>Reference Wellbore</b>	Wellbore #1	<b>Database:</b>	Landmark
<b>Reference Design:</b>	Plan #1 (11-21-13)	<b>Offset TVD Reference:</b>	Offset Datum

Offset Design													Offset Site Error:	0.0 ft	
Survey Program: 0-MWD													Offset Well Error:		0.0 ft
Reference				Offset		Semi Major Axis			Distance				Warning		
Measured Depth (ft)	Vertical Depth (ft)	Measured Depth (ft)	Vertical Depth (ft)	Reference (ft)	Offset (ft)	Highside Toolface (°)	Offset Wellbore Centre +N/-S (ft)	+E/-W (ft)	Between Centres (ft)	Between Ellipses (ft)	Minimum Separation (ft)	Separation Factor			
0.0	0.0	0.0	0.0	0.0	0.0	90.02	0.0	60.4	60.4						
100.0	100.0	100.0	100.0	0.1	0.1	90.02	0.0	60.4	60.4	60.2	0.22	268.664			
200.0	200.0	200.0	200.0	0.3	0.3	90.02	0.0	60.4	60.4	59.7	0.67	89.555			
300.0	300.0	300.0	300.0	0.6	0.6	90.02	0.0	60.4	60.4	59.3	1.12	53.733			
400.0	400.0	400.0	400.0	0.8	0.8	90.02	0.0	60.4	60.4	58.8	1.57	38.381			
500.0	500.0	500.0	500.0	1.0	1.0	90.02	0.0	60.4	60.4	58.4	2.02	29.852			
600.0	600.0	600.0	600.0	1.2	1.2	90.02	0.0	60.4	60.4	57.9	2.47	24.424			
700.0	700.0	700.0	700.0	1.5	1.5	90.02	0.0	60.4	60.4	57.5	2.92	20.666			
800.0	800.0	800.0	800.0	1.7	1.7	90.02	0.0	60.4	60.4	57.0	3.37	17.911			
900.0	900.0	900.0	900.0	1.9	1.9	90.02	0.0	60.4	60.4	56.6	3.82	15.804			
1,000.0	1,000.0	1,000.0	1,000.0	2.1	2.1	90.02	0.0	60.4	60.4	56.1	4.27	14.140			
1,100.0	1,100.0	1,100.0	1,100.0	2.4	2.4	90.02	0.0	60.4	60.4	55.7	4.72	12.794			
1,200.0	1,200.0	1,200.0	1,200.0	2.6	2.6	90.02	0.0	60.4	60.4	55.2	5.17	11.681			
1,300.0	1,300.0	1,300.0	1,300.0	2.8	2.8	90.02	0.0	60.4	60.4	54.8	5.62	10.747			
1,400.0	1,400.0	1,400.0	1,400.0	3.0	3.0	90.02	0.0	60.4	60.4	54.3	6.07	9.951			
1,500.0	1,500.0	1,500.0	1,500.0	3.3	3.3	90.02	0.0	60.4	60.4	53.9	6.52	9.264			
1,600.0	1,600.0	1,600.0	1,600.0	3.5	3.5	90.02	0.0	60.4	60.4	53.4	6.97	8.667			
1,700.0	1,700.0	1,700.0	1,700.0	3.7	3.7	90.02	0.0	60.4	60.4	53.0	7.42	8.141			
1,800.0	1,800.0	1,800.0	1,800.0	3.9	3.9	90.02	0.0	60.4	60.4	52.5	7.87	7.676			
1,900.0	1,900.0	1,900.0	1,900.0	4.2	4.2	90.02	0.0	60.4	60.4	52.1	8.32	7.261			
2,000.0	2,000.0	2,000.0	2,000.0	4.4	4.4	90.02	0.0	60.4	60.4	51.6	8.77	6.889			
2,100.0	2,100.0	2,100.0	2,100.0	4.6	4.6	90.02	0.0	60.4	60.4	51.2	9.22	6.553			
2,200.0	2,200.0	2,200.0	2,200.0	4.8	4.8	90.02	0.0	60.4	60.4	50.7	9.66	6.248			
2,300.0	2,300.0	2,300.0	2,300.0	5.1	5.1	90.02	0.0	60.4	60.4	50.3	10.11	5.970			
2,400.0	2,400.0	2,400.0	2,400.0	5.3	5.3	90.02	0.0	60.4	60.4	49.8	10.56	5.716			
2,500.0	2,500.0	2,500.0	2,500.0	5.5	5.5	90.02	0.0	60.4	60.4	49.4	11.01	5.483			
2,600.0	2,600.0	2,600.0	2,600.0	5.7	5.7	90.02	0.0	60.4	60.4	48.9	11.46	5.268			
2,700.0	2,700.0	2,700.0	2,700.0	6.0	6.0	90.02	0.0	60.4	60.4	48.5	11.91	5.069			
2,800.0	2,800.0	2,800.0	2,800.0	6.2	6.2	90.02	0.0	60.4	60.4	48.0	12.36	4.885			
2,900.0	2,900.0	2,900.0	2,900.0	6.4	6.4	90.02	0.0	60.4	60.4	47.6	12.81	4.713			
3,000.0	3,000.0	3,000.0	3,000.0	6.6	6.6	90.02	0.0	60.4	60.4	47.1	13.26	4.554			
3,100.0	3,100.0	3,100.0	3,100.0	6.9	6.9	90.02	0.0	60.4	60.4	46.7	13.71	4.404			
3,200.0	3,200.0	3,200.0	3,200.0	7.1	7.1	90.02	0.0	60.4	60.4	46.2	14.16	4.265			
3,300.0	3,300.0	3,300.0	3,300.0	7.3	7.3	90.02	0.0	60.4	60.4	45.8	14.61	4.133			
3,400.0	3,400.0	3,400.0	3,400.0	7.5	7.5	90.02	0.0	60.4	60.4	45.3	15.06	4.010			
3,500.0	3,500.0	3,500.0	3,500.0	7.8	7.8	90.02	0.0	60.4	60.4	44.9	15.51	3.894			
3,600.0	3,600.0	3,600.0	3,600.0	8.0	8.0	90.02	0.0	60.4	60.4	44.4	15.96	3.784			
3,700.0	3,700.0	3,700.0	3,700.0	8.2	8.2	90.02	0.0	60.4	60.4	44.0	16.41	3.680			
3,800.0	3,800.0	3,800.0	3,800.0	8.4	8.4	90.02	0.0	60.4	60.4	43.5	16.86	3.582			
3,900.0	3,900.0	3,900.0	3,900.0	8.7	8.7	90.02	0.0	60.4	60.4	43.1	17.31	3.489			
4,000.0	4,000.0	4,000.0	4,000.0	8.9	8.9	90.02	0.0	60.4	60.4	42.6	17.76	3.401			
4,100.0	4,100.0	4,100.0	4,100.0	9.1	9.1	90.02	0.0	60.4	60.4	42.2	18.21	3.317			
4,200.0	4,200.0	4,200.0	4,200.0	9.3	9.3	90.02	0.0	60.4	60.4	41.7	18.66	3.237			
4,300.0	4,300.0	4,300.0	4,300.0	9.6	9.6	90.02	0.0	60.4	60.4	41.3	19.11	3.161			
4,400.0	4,400.0	4,400.0	4,400.0	9.8	9.8	90.02	0.0	60.4	60.4	40.8	19.55	3.088			
4,500.0	4,500.0	4,500.0	4,500.0	10.0	10.0	90.02	0.0	60.4	60.4	40.4	20.00	3.019			
4,600.0	4,600.0	4,600.0	4,600.0	10.2	10.2	90.02	0.0	60.4	60.4	39.9	20.45	2.952 CC, ES			
4,700.0	4,700.0	4,698.9	4,698.9	10.5	10.4	87.75	2.4	61.2	61.2	40.4	20.90	2.931 SF			
4,800.0	4,800.0	4,797.3	4,797.0	10.7	10.7	81.38	9.6	63.6	64.4	43.0	21.34	3.017			
4,900.0	4,900.0	4,894.7	4,893.5	10.9	10.9	72.32	21.5	67.5	71.2	49.4	21.78	3.267			
5,000.0	5,000.0	4,990.5	4,987.8	11.1	11.1	62.62	37.7	72.9	83.0	60.8	22.22	3.735			
5,100.0	5,100.0	5,084.4	5,079.2	11.4	11.3	53.93	58.0	79.6	100.6	78.0	22.66	4.441			

CC - Min centre to center distance or convergent point, SF - min separation factor, ES - min ellipse separation

<b>Company:</b>	Great Western	<b>Local Co-ordinate Reference:</b>	Well Kodak North FD 25-119HC
<b>Project:</b>	SEC.26-T6N-R67W	<b>TVD Reference:</b>	WELL @ 4776.6ft (RKB - 16.5')
<b>Reference Site:</b>	Kodak North Pad Sec.26-T6N-R67W	<b>MD Reference:</b>	WELL @ 4776.6ft (RKB - 16.5')
<b>Site Error:</b>	0.0ft	<b>North Reference:</b>	True
<b>Reference Well:</b>	Kodak North FD 25-119HC	<b>Survey Calculation Method:</b>	Minimum Curvature
<b>Well Error:</b>	0.0ft	<b>Output errors are at</b>	2.00 sigma
<b>Reference Wellbore</b>	Wellbore #1	<b>Database:</b>	Landmark
<b>Reference Design:</b>	Plan #1 (11-21-13)	<b>Offset TVD Reference:</b>	Offset Datum

Offset Design													Offset Site Error:	0.0 ft	
Survey Program: 0-MWD													Offset Well Error:		0.0 ft
Reference		Offset		Semi Major Axis			Distance						Warning		
Measured Depth (ft)	Vertical Depth (ft)	Measured Depth (ft)	Vertical Depth (ft)	Reference (ft)	Offset (ft)	Highside Toolface (°)	Offset Wellbore Centre +N/-S (ft)	+E/-W (ft)	Between Centres (ft)	Between Ellipses (ft)	Minimum Separation (ft)	Separation Factor			
5,200.0	5,200.0	5,176.0	5,167.3	11.6	11.6	46.92	81.8	87.5	124.2	101.0	23.11	5.372			
5,300.0	5,300.0	5,264.9	5,251.5	11.8	11.8	41.56	108.7	96.4	153.2	129.6	23.57	6.500			
5,400.0	5,400.0	5,351.2	5,332.0	12.0	12.1	68.72	138.4	106.2	186.8	162.9	23.93	7.807			
5,500.0	5,499.4	5,436.2	5,409.7	12.2	12.4	65.91	171.0	117.0	221.7	197.4	24.32	9.116			
5,600.0	5,597.2	5,519.8	5,484.6	12.5	12.8	65.11	206.2	128.7	256.6	231.9	24.67	10.397			
5,700.0	5,692.2	5,601.6	5,556.3	12.7	13.1	65.52	243.6	141.1	291.5	266.4	25.04	11.642			
5,800.0	5,783.5	5,691.4	5,633.7	13.0	13.6	67.19	286.8	155.4	325.7	300.2	25.49	12.774			
5,900.0	5,870.7	5,782.4	5,712.2	13.4	14.1	70.56	330.7	169.9	358.1	332.0	26.18	13.679			
6,000.0	5,957.1	5,873.2	5,790.4	13.8	14.7	74.43	374.4	184.4	391.9	364.9	27.05	14.490			
6,100.0	6,043.6	5,964.1	5,868.7	14.3	15.3	77.71	418.1	198.8	427.1	399.2	27.98	15.264			
6,200.0	6,130.1	6,054.9	5,947.0	14.9	15.9	80.51	461.9	213.3	463.5	434.5	28.99	15.987			
6,300.0	6,216.5	6,145.7	6,025.2	15.5	16.5	82.92	505.6	227.8	500.6	470.6	30.06	16.654			
6,400.0	6,303.0	6,236.5	6,103.5	16.1	17.2	85.00	549.4	242.3	538.5	507.3	31.20	17.262			
6,500.0	6,389.4	6,327.4	6,181.8	16.8	17.9	86.82	593.1	256.8	576.9	544.5	32.39	17.814			
6,600.0	6,475.9	6,418.2	6,260.1	17.5	18.6	88.42	636.8	271.2	615.8	582.2	33.63	18.313			
6,700.0	6,562.3	6,509.0	6,338.3	18.3	19.3	89.83	680.6	285.7	655.0	620.1	34.91	18.762			
6,800.0	6,649.2	6,600.6	6,417.3	19.0	20.0	82.75	724.7	300.3	692.8	656.4	36.46	19.005			
6,900.0	6,738.4	7,890.1	7,115.6	19.6	27.3	-11.22	1,119.5	-320.2	675.9	638.3	37.61	17.972			
7,000.0	6,826.3	7,873.6	7,115.6	20.0	27.1	-50.85	1,119.4	-303.7	592.1	555.4	36.68	16.144			
7,100.0	6,908.5	7,835.5	7,115.6	20.2	26.8	-74.03	1,119.2	-265.6	518.1	481.2	36.83	14.066			
7,200.0	6,980.8	7,777.5	7,115.6	20.4	26.3	-85.55	1,118.8	-207.6	458.0	421.3	36.63	12.501			
7,300.0	7,039.3	7,702.8	7,115.6	20.5	25.9	-90.19	1,118.4	-132.9	414.0	377.7	36.33	11.397			
7,400.0	7,081.2	7,575.7	7,109.2	20.5	25.5	-88.40	1,114.0	-6.3	383.6	347.3	36.32	10.563			
7,500.0	7,104.3	7,434.7	7,068.0	20.5	25.2	-81.57	1,090.1	125.8	353.9	317.2	36.75	9.630			
7,600.0	7,108.6	7,326.8	7,013.0	20.7	24.8	-72.73	1,058.8	212.9	329.4	292.2	37.25	8.843			
7,700.0	7,108.6	7,250.9	6,964.0	21.8	24.5	-62.61	1,031.0	263.6	314.9	277.7	37.25	8.455			
7,729.5	7,108.6	7,233.5	6,951.7	22.3	24.5	-60.03	1,024.1	273.8	314.0	276.8	37.19	8.443			
7,800.0	7,108.6	7,200.0	6,927.2	23.6	24.3	-54.87	1,010.3	291.9	319.7	282.7	37.00	8.639			
7,900.0	7,108.6	7,162.0	6,897.9	25.5	24.1	-48.85	993.8	309.8	347.5	310.7	36.73	9.460			
8,000.0	7,108.6	7,134.7	6,876.2	27.6	24.0	-44.55	981.6	320.8	395.7	359.0	36.71	10.778			
8,100.0	7,108.6	7,114.0	6,859.3	29.8	23.9	-41.31	972.0	328.1	459.0	422.1	36.91	12.436			
8,200.0	7,108.6	7,100.0	6,847.7	32.1	23.8	-39.17	965.5	332.5	532.5	495.0	37.45	14.219			
8,300.0	7,108.6	7,084.6	6,834.9	34.4	23.7	-36.87	958.3	336.9	612.8	575.0	37.80	16.211			
8,400.0	7,108.6	7,075.0	6,826.8	36.9	23.7	-35.45	953.7	339.3	697.8	659.3	38.53	18.112			
8,500.0	7,108.6	7,065.0	6,818.3	39.3	23.6	-34.01	949.0	341.7	786.1	746.9	39.17	20.067			
8,600.0	7,108.6	7,050.0	6,805.5	41.9	23.5	-31.90	941.8	344.8	876.7	837.4	39.31	22.302			
8,700.0	7,108.6	7,050.0	6,805.5	44.4	23.5	-31.90	941.8	344.8	968.9	928.2	40.75	23.778			

<b>Company:</b>	Great Western	<b>Local Co-ordinate Reference:</b>	Well Kodak North FD 25-119HC
<b>Project:</b>	SEC.26-T6N-R67W	<b>TVD Reference:</b>	WELL @ 4776.6ft (RKB - 16.5')
<b>Reference Site:</b>	Kodak North Pad Sec.26-T6N-R67W	<b>MD Reference:</b>	WELL @ 4776.6ft (RKB - 16.5')
<b>Site Error:</b>	0.0ft	<b>North Reference:</b>	True
<b>Reference Well:</b>	Kodak North FD 25-119HC	<b>Survey Calculation Method:</b>	Minimum Curvature
<b>Well Error:</b>	0.0ft	<b>Output errors are at</b>	2.00 sigma
<b>Reference Wellbore</b>	Wellbore #1	<b>Database:</b>	Landmark
<b>Reference Design:</b>	Plan #1 (11-21-13)	<b>Offset TVD Reference:</b>	Offset Datum

Offset Design													Offset Site Error:	0.0 ft	
Survey Program: 0-MWD													Offset Well Error:		0.0 ft
Reference				Offset		Semi Major Axis			Distance				Warning		
Measured Depth (ft)	Vertical Depth (ft)	Measured Depth (ft)	Vertical Depth (ft)	Reference (ft)	Offset (ft)	Highside Toolface (°)	Offset Wellbore Centre +N/-S (ft)	+E/-W (ft)	Between Centres (ft)	Between Ellipses (ft)	Minimum Separation (ft)	Separation Factor			
0.0	0.0	0.0	0.0	0.0	0.0	89.92	0.0	30.1	30.1						
100.0	100.0	100.0	100.0	0.1	0.1	89.92	0.0	30.1	30.1	29.8	0.22	133.713			
200.0	200.0	200.0	200.0	0.3	0.3	89.92	0.0	30.1	30.1	29.4	0.67	44.571			
300.0	300.0	300.0	300.0	0.6	0.6	89.92	0.0	30.1	30.1	28.9	1.12	26.743			
400.0	400.0	400.0	400.0	0.8	0.8	89.92	0.0	30.1	30.1	28.5	1.57	19.102			
500.0	500.0	500.0	500.0	1.0	1.0	89.92	0.0	30.1	30.1	28.0	2.02	14.857			
600.0	600.0	600.0	600.0	1.2	1.2	89.92	0.0	30.1	30.1	27.6	2.47	12.156			
700.0	700.0	700.0	700.0	1.5	1.5	89.92	0.0	30.1	30.1	27.1	2.92	10.286			
800.0	800.0	800.0	800.0	1.7	1.7	89.92	0.0	30.1	30.1	26.7	3.37	8.914			
900.0	900.0	900.0	900.0	1.9	1.9	89.92	0.0	30.1	30.1	26.2	3.82	7.865			
1,000.0	1,000.0	1,000.0	1,000.0	2.1	2.1	89.92	0.0	30.1	30.1	25.8	4.27	7.038			
1,100.0	1,100.0	1,100.0	1,100.0	2.4	2.4	89.92	0.0	30.1	30.1	25.3	4.72	6.367			
1,200.0	1,200.0	1,200.0	1,200.0	2.6	2.6	89.92	0.0	30.1	30.1	24.9	5.17	5.814			
1,300.0	1,300.0	1,300.0	1,300.0	2.8	2.8	89.92	0.0	30.1	30.1	24.4	5.62	5.349			
1,400.0	1,400.0	1,400.0	1,400.0	3.0	3.0	89.92	0.0	30.1	30.1	24.0	6.07	4.952			
1,500.0	1,500.0	1,500.0	1,500.0	3.3	3.3	89.92	0.0	30.1	30.1	23.5	6.52	4.611			
1,600.0	1,600.0	1,600.0	1,600.0	3.5	3.5	89.92	0.0	30.1	30.1	23.1	6.97	4.313			
1,700.0	1,700.0	1,700.0	1,700.0	3.7	3.7	89.92	0.0	30.1	30.1	22.6	7.42	4.052			
1,800.0	1,800.0	1,800.0	1,800.0	3.9	3.9	89.92	0.0	30.1	30.1	22.2	7.87	3.820			
1,900.0	1,900.0	1,900.0	1,900.0	4.2	4.2	89.92	0.0	30.1	30.1	21.7	8.32	3.614			
2,000.0	2,000.0	2,000.0	2,000.0	4.4	4.4	89.92	0.0	30.1	30.1	21.3	8.77	3.429			
2,100.0	2,100.0	2,100.0	2,100.0	4.6	4.6	89.92	0.0	30.1	30.1	20.8	9.22	3.261			
2,200.0	2,200.0	2,200.0	2,200.0	4.8	4.8	89.92	0.0	30.1	30.1	20.4	9.66	3.110			
2,300.0	2,300.0	2,300.0	2,300.0	5.1	5.1	89.92	0.0	30.1	30.1	19.9	10.11	2.971			
2,400.0	2,400.0	2,400.0	2,400.0	5.3	5.3	89.92	0.0	30.1	30.1	19.5	10.56	2.845			
2,500.0	2,500.0	2,500.0	2,500.0	5.5	5.5	89.92	0.0	30.1	30.1	19.0	11.01	2.729			
2,600.0	2,600.0	2,600.0	2,600.0	5.7	5.7	89.92	0.0	30.1	30.1	18.6	11.46	2.622			
2,700.0	2,700.0	2,700.0	2,700.0	6.0	6.0	89.92	0.0	30.1	30.1	18.1	11.91	2.523			
2,800.0	2,800.0	2,800.0	2,800.0	6.2	6.2	89.92	0.0	30.1	30.1	17.7	12.36	2.431			
2,900.0	2,900.0	2,900.0	2,900.0	6.4	6.4	89.92	0.0	30.1	30.1	17.2	12.81	2.346			
3,000.0	3,000.0	3,000.0	3,000.0	6.6	6.6	89.92	0.0	30.1	30.1	16.8	13.26	2.266			
3,100.0	3,100.0	3,100.0	3,100.0	6.9	6.9	89.92	0.0	30.1	30.1	16.3	13.71	2.192			
3,200.0	3,200.0	3,200.0	3,200.0	7.1	7.1	89.92	0.0	30.1	30.1	15.9	14.16	2.122			
3,300.0	3,300.0	3,300.0	3,300.0	7.3	7.3	89.92	0.0	30.1	30.1	15.4	14.61	2.057			
3,400.0	3,400.0	3,400.0	3,400.0	7.5	7.5	89.92	0.0	30.1	30.1	15.0	15.06	1.996			
3,500.0	3,500.0	3,500.0	3,500.0	7.8	7.8	89.92	0.0	30.1	30.1	14.5	15.51	1.938			
3,600.0	3,600.0	3,600.0	3,600.0	8.0	8.0	89.92	0.0	30.1	30.1	14.1	15.96	1.883			
3,700.0	3,700.0	3,700.0	3,700.0	8.2	8.2	89.92	0.0	30.1	30.1	13.6	16.41	1.832			
3,800.0	3,800.0	3,800.0	3,800.0	8.4	8.4	89.92	0.0	30.1	30.1	13.2	16.86	1.783			
3,900.0	3,900.0	3,900.0	3,900.0	8.7	8.7	89.92	0.0	30.1	30.1	12.7	17.31	1.737			
4,000.0	4,000.0	4,000.0	4,000.0	8.9	8.9	89.92	0.0	30.1	30.1	12.3	17.76	1.693			
4,100.0	4,100.0	4,100.0	4,100.0	9.1	9.1	89.92	0.0	30.1	30.1	11.8	18.21	1.651			
4,200.0	4,200.0	4,200.0	4,200.0	9.3	9.3	89.92	0.0	30.1	30.1	11.4	18.66	1.611			
4,300.0	4,300.0	4,300.0	4,300.0	9.6	9.6	89.92	0.0	30.1	30.1	10.9	19.11	1.573			
4,400.0	4,400.0	4,400.0	4,400.0	9.8	9.8	89.92	0.0	30.1	30.1	10.5	19.55	1.537			
4,500.0	4,500.0	4,500.0	4,500.0	10.0	10.0	89.92	0.0	30.1	30.1	10.0	20.00	1.502			
4,600.0	4,600.0	4,600.0	4,600.0	10.2	10.2	89.92	0.0	30.1	30.1	9.6	20.45	1.469	Level 3		
4,700.0	4,700.0	4,700.0	4,700.0	10.5	10.5	89.92	0.0	30.1	30.1	9.2	20.90	1.438	Level 3		
4,800.0	4,800.0	4,800.0	4,800.0	10.7	10.7	89.92	0.0	30.1	30.1	8.7	21.35	1.408	Level 3, CC, ES, SF		
4,900.0	4,900.0	4,899.2	4,899.1	10.9	10.9	85.79	2.3	31.3	31.4	9.6	21.80	1.439	Level 3		
5,000.0	5,000.0	4,997.8	4,997.4	11.1	11.1	75.48	9.0	34.9	36.2	13.9	22.24	1.626			
5,100.0	5,100.0	5,095.4	5,094.2	11.4	11.3	63.84	20.1	40.9	45.9	23.3	22.67	2.026			

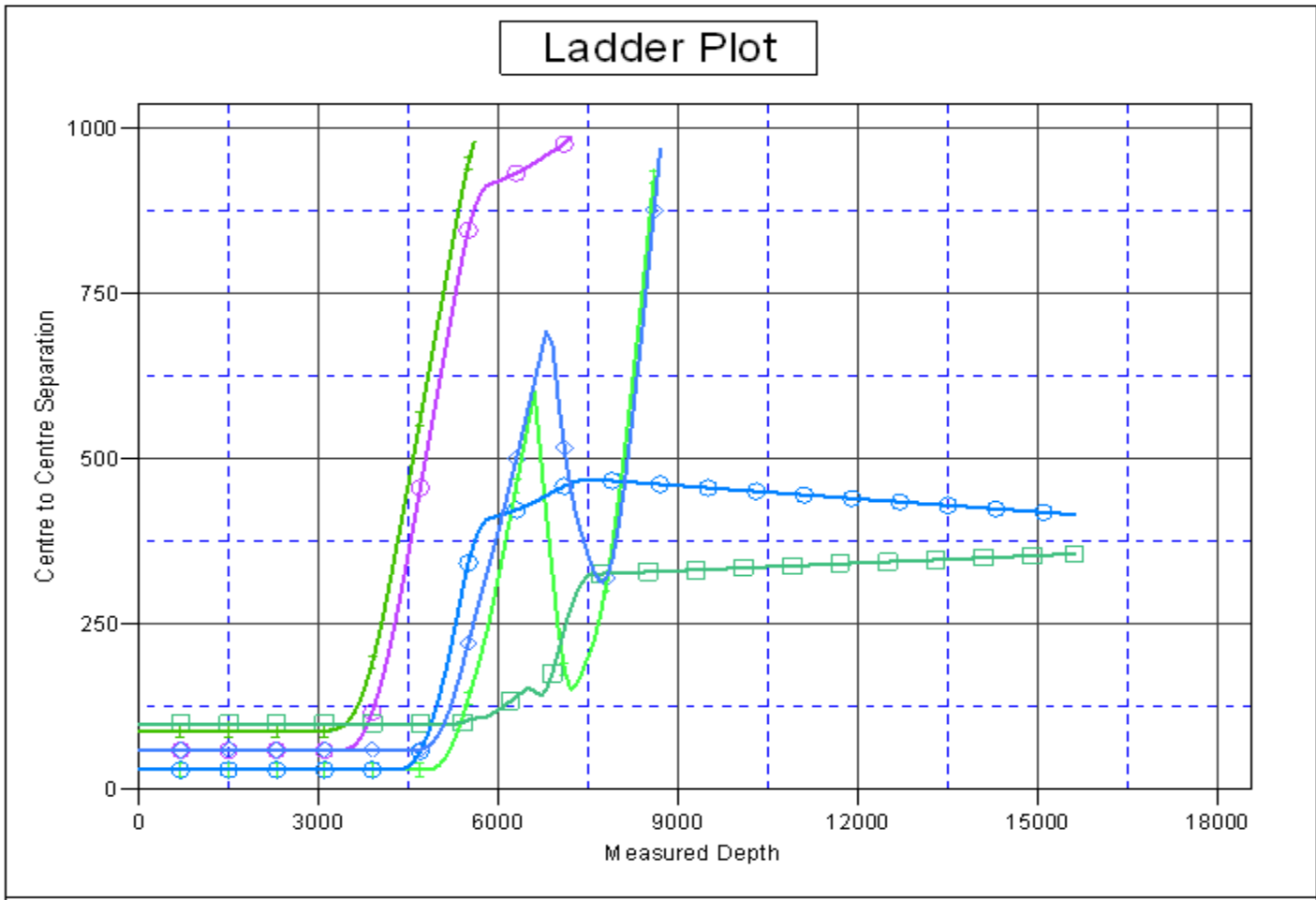
CC - Min centre to center distance or convergent point, SF - min separation factor, ES - min ellipse separation

<b>Company:</b>	Great Western	<b>Local Co-ordinate Reference:</b>	Well Kodak North FD 25-119HC
<b>Project:</b>	SEC.26-T6N-R67W	<b>TVD Reference:</b>	WELL @ 4776.6ft (RKB - 16.5')
<b>Reference Site:</b>	Kodak North Pad Sec.26-T6N-R67W	<b>MD Reference:</b>	WELL @ 4776.6ft (RKB - 16.5')
<b>Site Error:</b>	0.0ft	<b>North Reference:</b>	True
<b>Reference Well:</b>	Kodak North FD 25-119HC	<b>Survey Calculation Method:</b>	Minimum Curvature
<b>Well Error:</b>	0.0ft	<b>Output errors are at</b>	2.00 sigma
<b>Reference Wellbore</b>	Wellbore #1	<b>Database:</b>	Landmark
<b>Reference Design:</b>	Plan #1 (11-21-13)	<b>Offset TVD Reference:</b>	Offset Datum

Offset Design													Offset Site Error:	0.0 ft	
Survey Program: 0-MWD													Offset Well Error:		0.0 ft
Reference		Offset		Semi Major Axis			Distance						Warning		
Measured Depth (ft)	Vertical Depth (ft)	Measured Depth (ft)	Vertical Depth (ft)	Reference (ft)	Offset (ft)	Highside Toolface (°)	Offset Wellbore Centre +N/-S (ft)	+E/-W (ft)	Between Centres (ft)	Between Ellipses (ft)	Minimum Separation (ft)	Separation Factor			
5,200.0	5,200.0	5,191.4	5,188.7	11.6	11.6	54.35	35.2	49.1	61.4	38.3	23.11	2.658			
5,300.0	5,300.0	5,285.5	5,280.3	11.8	11.8	47.64	54.0	59.3	82.6	59.0	23.55	3.506			
5,400.0	5,400.0	5,377.4	5,368.7	12.0	12.0	74.79	76.2	71.3	108.6	84.7	23.97	4.532			
5,500.0	5,499.4	5,467.7	5,454.2	12.2	12.3	73.88	101.7	85.0	137.0	112.6	24.38	5.620			
5,600.0	5,597.2	5,555.8	5,536.2	12.5	12.6	75.52	129.9	100.3	167.2	142.4	24.78	6.748			
5,700.0	5,692.2	5,641.3	5,614.3	12.7	12.9	78.24	160.4	116.8	200.0	174.8	25.22	7.930			
5,800.0	5,783.5	5,723.6	5,688.1	13.0	13.2	81.25	192.7	134.3	236.2	210.5	25.73	9.180			
5,900.0	5,870.7	5,802.8	5,757.3	13.4	13.6	85.13	226.3	152.4	276.7	250.3	26.35	10.502			
6,000.0	5,957.1	5,888.6	5,831.3	13.8	14.1	89.48	264.5	173.1	320.8	293.8	27.07	11.852			
6,100.0	6,043.6	5,975.7	5,906.5	14.3	14.6	92.86	303.3	194.1	366.2	338.4	27.86	13.145			
6,200.0	6,130.1	6,062.9	5,981.7	14.9	15.1	95.52	342.2	215.1	412.5	383.8	28.72	14.362			
6,300.0	6,216.5	6,150.1	6,056.8	15.5	15.7	97.65	381.0	236.1	459.3	429.7	29.65	15.493			
6,400.0	6,303.0	6,237.2	6,132.0	16.1	16.2	99.40	419.8	257.1	506.5	475.9	30.63	16.536			
6,500.0	6,389.4	6,324.4	6,207.2	16.8	16.9	100.85	458.6	278.1	554.1	522.4	31.68	17.492			
6,600.0	6,475.9	6,411.6	6,282.3	17.5	17.5	102.08	497.4	299.1	601.8	569.1	32.77	18.366			
6,700.0	6,562.3	6,499.5	6,363.6	18.3	18.3	103.52	536.2	319.1	649.6	617.0	33.92	19.280			
6,800.0	6,649.2	6,586.4	6,450.6	19.0	19.0	105.00	575.0	338.0	698.0	665.0	35.15	20.220			
6,900.0	6,738.4	6,675.1	6,528.3	19.6	19.6	106.50	613.8	356.0	746.0	712.0	36.45	21.180			
7,000.0	6,826.3	6,762.0	6,600.6	20.0	20.0	108.00	652.6	374.0	794.0	758.0	37.80	22.160			
7,100.0	6,908.5	6,843.2	6,700.6	20.2	20.2	109.50	691.4	392.0	842.0	806.0	39.20	23.160			
7,200.0	6,980.8	6,915.7	6,780.6	20.4	20.4	111.00	730.2	410.0	890.0	854.0	40.65	24.180			
7,228.6	6,999.1	6,934.7	6,810.6	20.4	20.4	112.50	769.0	428.0	938.0	902.0	42.15	25.220			
7,300.0	7,039.3	6,974.9	6,840.6	20.5	20.5	114.00	807.8	446.0	986.0	950.0	43.70	26.280			
7,400.0	7,081.2	7,016.9	6,920.6	20.5	20.5	115.50	846.6	464.0	1034.0	1000.0	45.30	27.360			
7,500.0	7,104.3	7,051.2	6,960.6	20.5	20.5	117.00	885.4	482.0	1082.0	1050.0	46.95	28.460			
7,600.0	7,108.6	7,055.0	6,960.6	20.7	20.7	118.50	924.2	500.0	1130.0	1100.0	48.75	29.580			
7,700.0	7,108.6	7,055.0	6,960.6	20.7	20.7	120.00	963.0	518.0	1178.0	1150.0	50.65	30.720			
7,800.0	7,108.6	7,055.0	6,960.6	20.7	20.7	121.50	1001.8	536.0	1226.0	1200.0	52.65	31.880			
7,900.0	7,108.6	7,055.0	6,960.6	20.7	20.7	123.00	1040.6	554.0	1274.0	1250.0	54.75	33.060			
8,000.0	7,108.6	7,055.0	6,960.6	20.7	20.7	124.50	1079.4	572.0	1322.0	1300.0	56.95	34.260			
8,100.0	7,108.6	7,055.0	6,960.6	20.7	20.7	126.00	1118.2	590.0	1370.0	1350.0	59.25	35.480			
8,200.0	7,108.6	7,055.0	6,960.6	20.7	20.7	127.50	1157.0	608.0	1418.0	1400.0	61.65	36.720			
8,300.0	7,108.6	7,055.0	6,960.6	20.7	20.7	129.00	1195.8	626.0	1466.0	1450.0	64.15	38.000			
8,400.0	7,108.6	7,055.0	6,960.6	20.7	20.7	130.50	1234.6	644.0	1514.0	1500.0	66.75	39.320			
8,500.0	7,108.6	7,055.0	6,960.6	20.7	20.7	132.00	1273.4	662.0	1562.0	1550.0	69.45	40.680			
8,600.0	7,108.6	7,055.0	6,960.6	20.7	20.7	133.50	1312.2	680.0	1610.0	1600.0	72.25	42.080			

<b>Company:</b>	Great Western	<b>Local Co-ordinate Reference:</b>	Well Kodak North FD 25-119HC
<b>Project:</b>	SEC.26-T6N-R67W	<b>TVD Reference:</b>	WELL @ 4776.6ft (RKB - 16.5')
<b>Reference Site:</b>	Kodak North Pad Sec.26-T6N-R67W	<b>MD Reference:</b>	WELL @ 4776.6ft (RKB - 16.5')
<b>Site Error:</b>	0.0ft	<b>North Reference:</b>	True
<b>Reference Well:</b>	Kodak North FD 25-119HC	<b>Survey Calculation Method:</b>	Minimum Curvature
<b>Well Error:</b>	0.0ft	<b>Output errors are at</b>	2.00 sigma
<b>Reference Wellbore</b>	Wellbore #1	<b>Database:</b>	Landmark
<b>Reference Design:</b>	Plan #1 (11-21-13)	<b>Offset TVD Reference:</b>	Offset Datum

Reference Depths are relative to WELL @ 4776.6ft (RKB - 16.5')      Coordinates are relative to: Kodak North FD 25-119HC  
 Offset Depths are relative to Offset Datum      Coordinate System is US State Plane 1983, Colorado Northern Zone  
 Central Meridian is -105.500000 °      Grid Convergence at Surface is: 0.41°

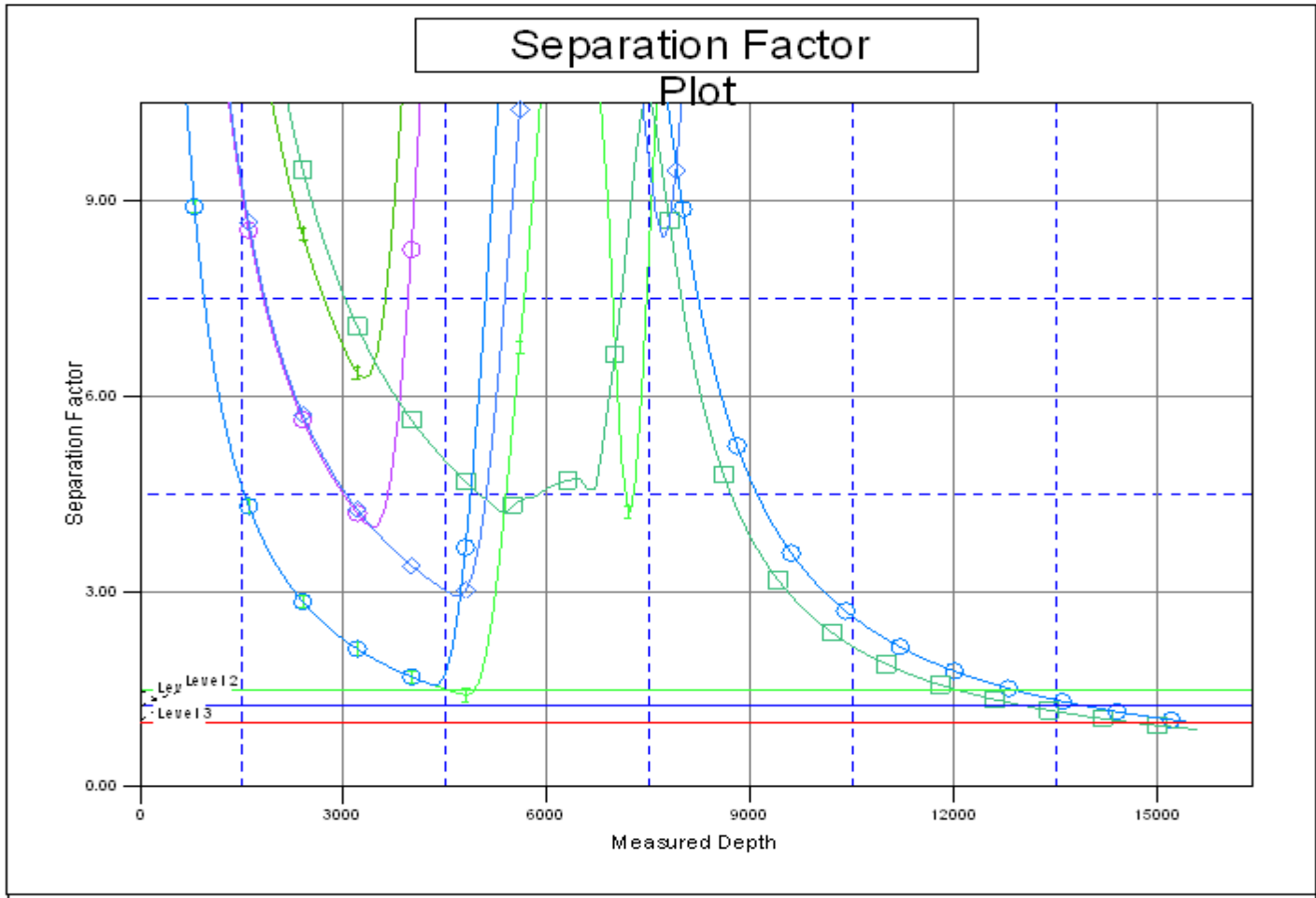


LEGEND

- 102HN, Wellbore #1, Plan #1 (11-21-13) —○— Kodak North FD 25-039HN, Wellbore #1, Plan #1 (11-21-13) —□— Kodak North FD 25-122HN, Wellbo
- 039HC, Wellbore #1, Plan #1 (11-21-13) —○— Kodak North FD 25-079HN, Wellbore #1, Plan #1 (11-21-13) —○— Kodak North FD 27-099HC, Wellbo

<b>Company:</b>	Great Western	<b>Local Co-ordinate Reference:</b>	Well Kodak North FD 25-119HC
<b>Project:</b>	SEC.26-T6N-R67W	<b>TVD Reference:</b>	WELL @ 4776.6ft (RKB - 16.5')
<b>Reference Site:</b>	Kodak North Pad Sec.26-T6N-R67W	<b>MD Reference:</b>	WELL @ 4776.6ft (RKB - 16.5')
<b>Site Error:</b>	0.0ft	<b>North Reference:</b>	True
<b>Reference Well:</b>	Kodak North FD 25-119HC	<b>Survey Calculation Method:</b>	Minimum Curvature
<b>Well Error:</b>	0.0ft	<b>Output errors are at</b>	2.00 sigma
<b>Reference Wellbore</b>	Wellbore #1	<b>Database:</b>	Landmark
<b>Reference Design:</b>	Plan #1 (11-21-13)	<b>Offset TVD Reference:</b>	Offset Datum

Reference Depths are relative to WELL @ 4776.6ft (RKB - 16.5')      Coordinates are relative to: Kodak North FD 25-119HC  
 Offset Depths are relative to Offset Datum      Coordinate System is US State Plane 1983, Colorado Northern Zone  
 Central Meridian is -105.500000 °      Grid Convergence at Surface is: 0.41°



LEGEND

- 102HN, Wellbore #1, Plan #1 (11-21-13) ● Kodak North FD 25-039HN, Wellbore #1, Plan #1 (11-21-13) ■ Kodak North FD 25-122HN, Wellbo
- 039HC, Wellbore #1, Plan #1 (11-21-13) ◆ Kodak North FD 25-079HN, Wellbore #1, Plan #1 (11-21-13) ● Kodak North FD 27-099HC, Wellbo