

T6N, R67W, 6th P.M.

GREAT WESTERN OIL & GAS COMPANY

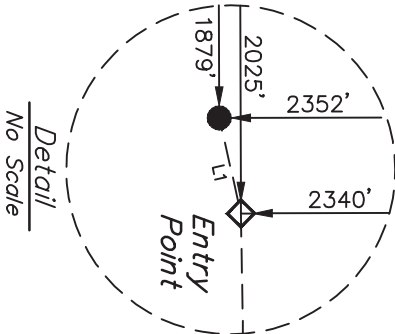
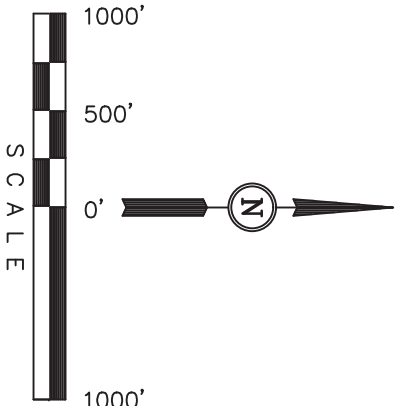
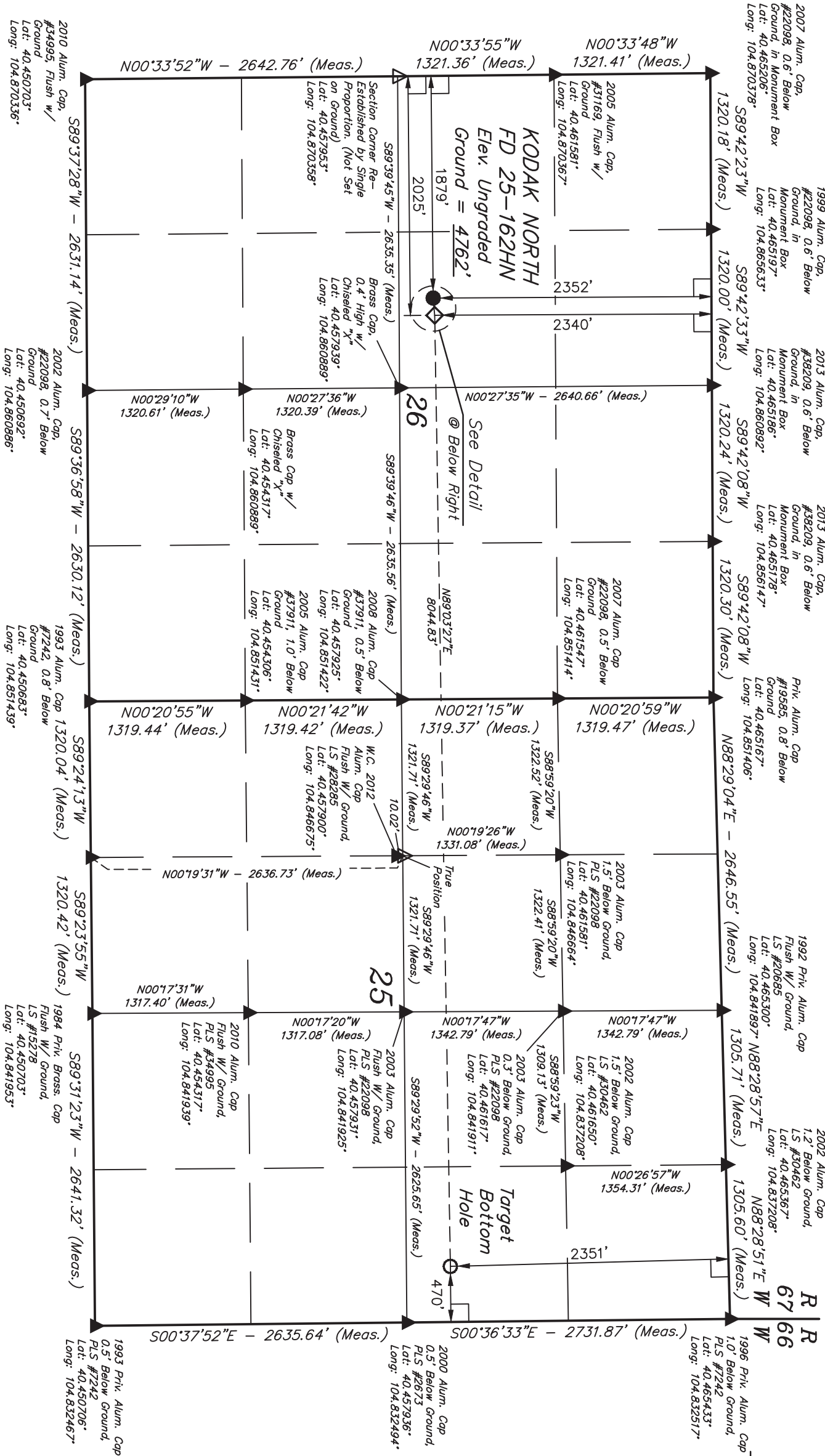
Well location, KODAK NORTH FD 25-162HN, located as shown in the SE 1/4 NW 1/4 of Section 26, T6N, R67W, 6th P.M., Weld County, Colorado.

BASIS OF ELEVATION

USGS COOPERATIVE BASE NETWORK CONTROL STATION, DESIGNATION "VERMILYEA". NGS DATA SHEET LISTS THE NAVD 88 ELEVATION AS BEING 5026 FEET

BASIS OF BEARINGS

BASIS OF BEARINGS IS A G.P.S. OBSERVATION.



THIS IS TO CERTIFY THAT THE ABOVE WAS PREPARED FROM FIELD NOTES OF ACTUAL SURVEY MADE BY ME OR UNDER MY SUPERVISION AND THAT THE SAME ARE TRUE AND CORRECT TO THE BEST OF MY KNOWLEDGE AND BELIEF.



LEGEND:

- 90° SYMBOL
- PROPOSED WELL HEAD.
- TARGET BOTTOM HOLE.
- ENTRY POINT.
- SECTION CORNERS LOCATED.
- SECTION CORNERS RE-ESTABLISHED. (Not Set on Ground.)

LINE TABLE		
LINE	DIRECTION	LENGTH
L1	N84°53'52"E	146.49'

NAD 83 (TARGET BOTTOM HOLE)		NAD 83 (ENTRY POINT)		NAD 83 (SURFACE LOCATION)	
LATITUDE = 40°27'32.25" (40.458958)	LATITUDE = 40°27'31.57" (40.458769)	LATITUDE = 40°27'31.45" (40.458736)	LATITUDE = 40°27'31.45" (40.458736)	LATITUDE = 40°27'31.45" (40.458736)	LATITUDE = 40°27'31.45" (40.458736)
LONGITUDE = 104°50'03.07" (104.834186)	LONGITUDE = 104°51'47.10" (104.863083)	LONGITUDE = 104°51'48.99" (104.863608)	LONGITUDE = 104°51'48.99" (104.863608)	LONGITUDE = 104°51'48.99" (104.863608)	LONGITUDE = 104°51'48.99" (104.863608)
NAD 27 (TARGET BOTTOM HOLE)		NAD 27 (ENTRY POINT)		NAD 27 (SURFACE LOCATION)	
LATITUDE = 40°27'32.31" (40.458975)	LATITUDE = 40°27'31.64" (40.458789)	LATITUDE = 40°27'31.52" (40.458756)	LATITUDE = 40°27'31.52" (40.458756)	LATITUDE = 40°27'31.52" (40.458756)	LATITUDE = 40°27'31.52" (40.458756)
LONGITUDE = 104°50'01.17" (104.833658)	LONGITUDE = 104°51'45.21" (104.862558)	LONGITUDE = 104°51'47.10" (104.863083)	LONGITUDE = 104°51'47.10" (104.863083)	LONGITUDE = 104°51'47.10" (104.863083)	LONGITUDE = 104°51'47.10" (104.863083)

PDOP = 1.1

UNTAH ENGINEERING & LAND SURVEYING

85 SOUTH 200 EAST - VERNAL, UTAH 84078

(435) 789-1017

SCALE	DATE SURVEYED:	DATE DRAWN:
1" = 1000'	10-21-13	10-30-13
PARTY	REFERENCES	
D.N. C.M. G.W. J.W.	G.L.O. PLAT	
WEATHER	FILE	
COOL	GREAT WESTERN OIL & GAS COMPANY	