

# BONANZA CREEK OIL COMPANY

Location: COLORADO Slot: SLOT#08 STATE NORTH PLATTE 024-K21-26HNB (519'FSL & 2382'FEL,SEC.26)  
Field: WELD COUNTY Well: STATE NORTH PLATTE 024-K21-26HNB  
Facility: SEC.26-T5N-R63W Wellbore: STATE NORTH PLATTE 024-K21-26HNB PWB

Plot reference wellpath is STATE NORTH PLATTE 024-K21-26HNB (REV-B.0) PWP

True vertical depths are referenced to CADE 22 (RKB)

Grid System: NAD83 / Lambert Colorado SP, Northern Zone (501), US feet

Measured depths are referenced to CADE 22 (RKB)

North Reference: True north

CADE 22 (RKB) to Mean Sea Level: 4567 feet

Scale: True distance

Mean Sea Level to Mud line (At Slot: SLOT#08 STATE NORTH PLATTE 024-K21-26HNB (519'FSL & 2382'FEL,SEC.26)): 0 feet

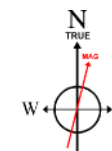
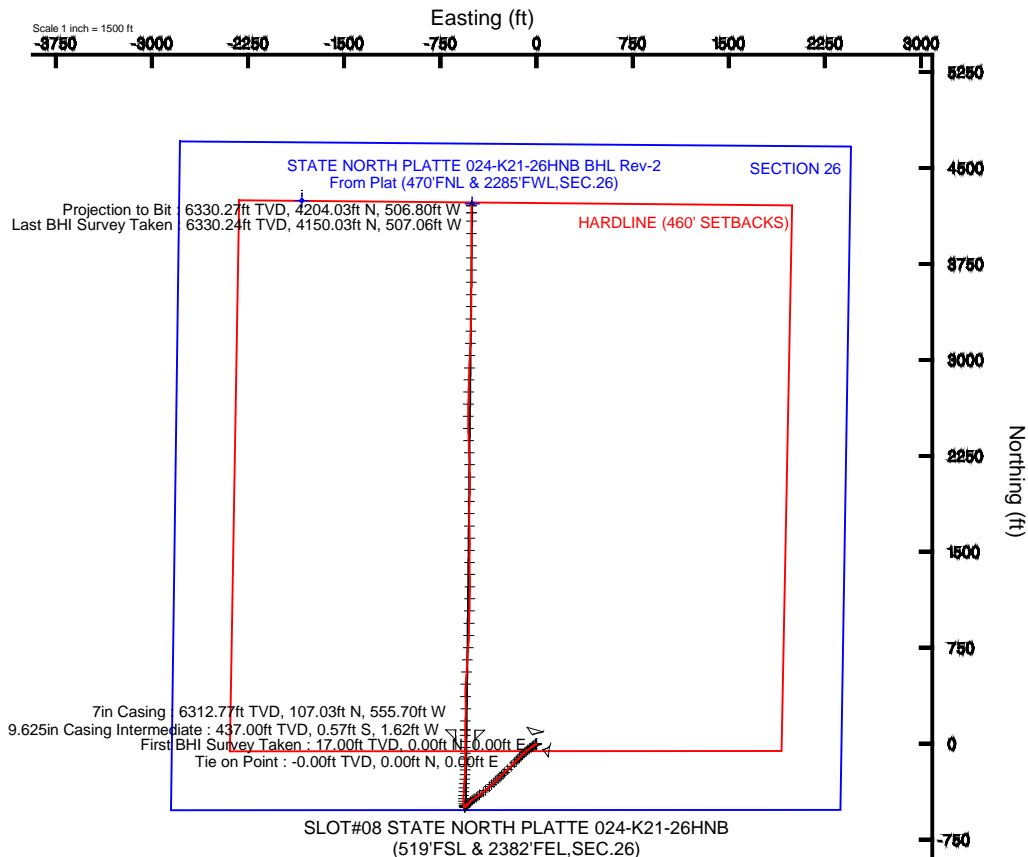
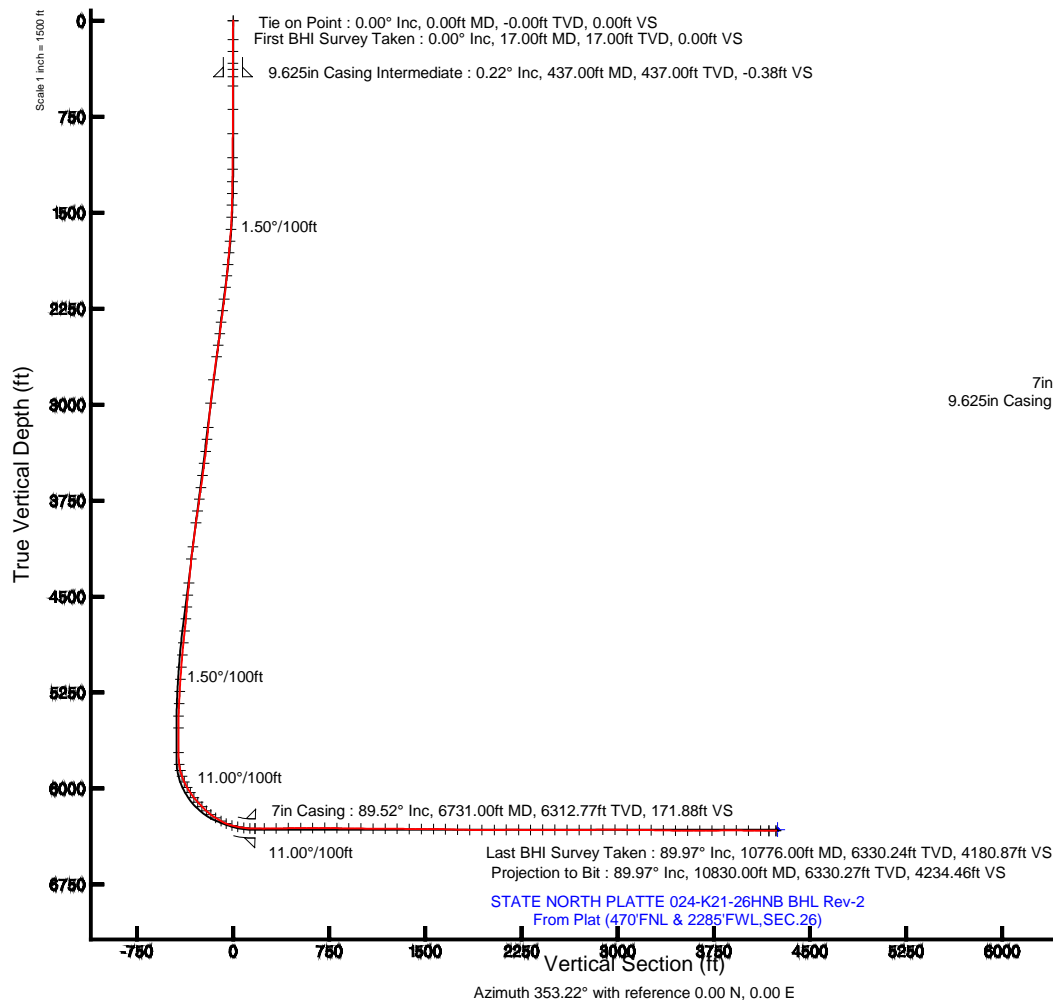
Depths are in feet

Coordinates are in feet referenced to Slot

Created by: guenaler on 11/27/2013

## Location Information

Facility Name			Grid East (US ft)	Grid North (US ft)	Latitude	Longitude
SEC.26-T5N-R63W			3303950.838	1381774.536	40°22'34.464"N	104°24'32.436"W
Slot	Local N (ft)	Local E (ft)	Grid East (US ft)	Grid North (US ft)	Latitude	Longitude
SLOT#08 STATE NORTH PLATTE 024-K21-26HNB (519'FSL & 2382'FEL,SEC.26)	-4244.15	1830.85	3305833.681	1377553.417	40°21'52.524"N	104°24'08.784"W
CADE 22 (RKB) to Mud line (At Slot: SLOT#08 STATE NORTH PLATTE 024-K21-26HNB (519'FSL & 2382'FEL,SEC.26))					4567ft	
Mean Sea Level to Mud line (At Slot: SLOT#08 STATE NORTH PLATTE 024-K21-26HNB (519'FSL & 2382'FEL,SEC.26))					0ft	
CADE 22 (RKB) to Mean Sea Level					4567ft	



BGGM (1945.0 to 2014.0) Dip: 66.96° Field: 52783.9 nT  
Magnetic North is 8.41 degrees East of True North (at 11/7/2013)

To correct azimuth from Magnetic to True add 8.41 degrees



# Actual Wellpath Report

STATE NORTH PLATTE 024-K21-26HNB AWP

Page 1 of 7



## REFERENCE WELLPATH IDENTIFICATION

Operator	BONANZA CREEK OIL COMPANY	Slot	SLOT#08 STATE NORTH PLATTE 024-K21-26HNB (519'FSL & 2382'FEL,SEC.26)
Area	COLORADO	Well	STATE NORTH PLATTE 024-K21-26HNB
Field	WELD COUNTY	Wellbore	STATE NORTH PLATTE 024-K21-26HNB AWB
Facility	SEC.26-T5N-R63W		

## REPORT SETUP INFORMATION

Projection System	NAD83 / Lambert Colorado SP, Northern Zone (501), US feet	Software System	WellArchitect® 4.0.0
North Reference	True	User	Guenaler
Scale	0.999959	Report Generated	11/27/2013 at 3:57:49 PM
Convergence at slot	n/a	Database/Source file	WA_Denver/STATE_NORTH_PLATTE_024-K21-26HNB_AWB.xml

## WELLPATH LOCATION

	Local coordinates		Grid coordinates		Geographic coordinates	
	North[ft]	East[ft]	Easting[US ft]	Northing[US ft]	Latitude	Longitude
Slot Location	-4244.15	1830.85	3305833.68	1377553.42	40°21'52.524"N	104°24'08.784"W
Facility Reference Pt			3303950.84	1381774.54	40°22'34.464"N	104°24'32.436"W
Field Reference Pt			3327718.19	1377782.99	40°21'52.020"N	104°19'26.040"W

## WELLPATH DATUM

Calculation method	Minimum curvature	CADE 22 (RKB) to Facility Vertical Datum	4567.00ft
Horizontal Reference Pt	Slot	CADE 22 (RKB) to Mean Sea Level	4567.00ft
Vertical Reference Pt	CADE 22 (RKB)	CADE 22 (RKB) to Mud Line at Slot (SLOT#08 STATE NORTH PLATTE 024-K21-26HNB (519'FSL & 2382'FEL,SEC.26))	4567.00ft
MD Reference Pt	CADE 22 (RKB)	Section Origin	N 0.00, E 0.00 ft
Field Vertical Reference	Mean Sea Level	Section Azimuth	353.22°



# Actual Wellpath Report

STATE NORTH PLATTE 024-K21-26HNB AWP

Page 2 of 7



REFERENCE WELLPATH IDENTIFICATION			
Operator	BONANZA CREEK OIL COMPANY	Slot	SLOT#08 STATE NORTH PLATTE 024-K21-26HNB (519'FSL & 2382'FEL,SEC.26)
Area	COLORADO	Well	STATE NORTH PLATTE 024-K21-26HNB
Field	WELD COUNTY	Wellbore	STATE NORTH PLATTE 024-K21-26HNB AWP
Facility	SEC.26-T5N-R63W		

WELLPATH DATA (117 stations)										
MD [ft]	Inclination [°]	Azimuth [°]	TVD [ft]	Vert Sect [ft]	North [ft]	East [ft]	Latitude	Longitude	DLS [°/100ft]	Comments
0.00	0.000	237.570	0.00	0.00	0.00	0.00	40°21'52.524"N	104°24'08.784"W	0.00	Tie on Point
17.00	0.000	237.570	17.00	0.00	0.00	0.00	40°21'52.524"N	104°24'08.784"W	0.00	First BHI Survey Taken
147.00	0.440	237.570	147.00	-0.22	-0.27	-0.42	40°21'52.521"N	104°24'08.789"W	0.34	
240.00	0.130	253.770	240.00	-0.39	-0.49	-0.82	40°21'52.519"N	104°24'08.795"W	0.34	
331.00	0.380	237.450	331.00	-0.54	-0.68	-1.18	40°21'52.517"N	104°24'08.799"W	0.28	
379.00	0.290	313.060	379.00	-0.51	-0.68	-1.40	40°21'52.517"N	104°24'08.802"W	0.87	
509.00	0.300	227.410	508.99	-0.46	-0.69	-1.89	40°21'52.517"N	104°24'08.808"W	0.31	
692.00	0.410	218.910	691.99	-1.20	-1.52	-2.66	40°21'52.509"N	104°24'08.818"W	0.07	
881.00	0.390	176.820	880.99	-2.31	-2.69	-3.04	40°21'52.497"N	104°24'08.823"W	0.15	
1070.00	0.310	170.580	1069.98	-3.46	-3.84	-2.93	40°21'52.486"N	104°24'08.822"W	0.05	
1160.00	0.390	188.400	1159.98	-4.00	-4.38	-2.93	40°21'52.481"N	104°24'08.822"W	0.15	
1256.00	2.100	230.770	1255.96	-5.26	-5.82	-4.34	40°21'52.467"N	104°24'08.840"W	1.91	
1351.00	3.300	249.740	1350.85	-6.83	-7.86	-8.25	40°21'52.446"N	104°24'08.891"W	1.56	
1441.00	4.800	245.790	1440.62	-8.57	-10.31	-14.12	40°21'52.422"N	104°24'08.966"W	1.69	
1536.00	6.360	241.770	1535.17	-11.68	-14.42	-22.38	40°21'52.381"N	104°24'09.073"W	1.69	
1632.00	8.270	236.240	1630.39	-16.76	-20.78	-32.81	40°21'52.319"N	104°24'09.208"W	2.12	
1724.00	9.180	231.170	1721.32	-23.66	-29.06	-44.02	40°21'52.237"N	104°24'09.353"W	1.29	
1816.00	9.490	229.470	1812.10	-31.76	-38.59	-55.51	40°21'52.143"N	104°24'09.501"W	0.45	
1909.00	10.210	232.550	1903.73	-40.23	-48.58	-67.88	40°21'52.044"N	104°24'09.661"W	0.96	
2000.00	10.020	229.540	1993.32	-48.73	-58.62	-80.30	40°21'51.945"N	104°24'09.821"W	0.62	
2092.00	11.150	226.700	2083.75	-58.46	-69.92	-92.87	40°21'51.833"N	104°24'09.984"W	1.35	
2184.00	12.420	226.280	2173.81	-69.70	-82.86	-106.49	40°21'51.705"N	104°24'10.160"W	1.38	
2277.00	11.750	224.780	2264.75	-81.60	-96.49	-120.39	40°21'51.571"N	104°24'10.339"W	0.80	
2368.00	11.400	224.080	2353.90	-93.04	-109.53	-133.17	40°21'51.442"N	104°24'10.504"W	0.41	
2461.00	10.820	224.550	2445.16	-104.30	-122.35	-145.69	40°21'51.315"N	104°24'10.666"W	0.63	
2554.00	12.110	223.930	2536.30	-115.93	-135.60	-158.58	40°21'51.184"N	104°24'10.833"W	1.39	
2646.00	12.540	223.840	2626.18	-128.38	-149.75	-172.20	40°21'51.044"N	104°24'11.009"W	0.47	
2828.00	11.660	223.550	2804.13	-152.65	-177.33	-198.55	40°21'50.772"N	104°24'11.349"W	0.48	
3016.00	10.310	228.150	2988.69	-174.45	-202.33	-224.18	40°21'50.525"N	104°24'11.680"W	0.86	
3207.00	9.380	226.640	3176.87	-193.55	-224.42	-248.22	40°21'50.306"N	104°24'11.991"W	0.51	



# Actual Wellpath Report

## STATE NORTH PLATTE 024-K21-26HNB AWP

Page 3 of 7



REFERENCE WELLPATH IDENTIFICATION			
Operator	BONANZA CREEK OIL COMPANY	Slot	SLOT#08 STATE NORTH PLATTE 024-K21-26HNB (519'FSL & 2382'FEL,SEC.26)
Area	COLORADO	Well	STATE NORTH PLATTE 024-K21-26HNB
Field	WELD COUNTY	Wellbore	STATE NORTH PLATTE 024-K21-26HNB AWP
Facility	SEC.26-T5N-R63W		

WELLPATH DATA (117 stations)										
MD [ft]	Inclination [°]	Azimuth [°]	TVD [ft]	Vert Sect [ft]	North [ft]	East [ft]	Latitude	Longitude	DLS [°/100ft]	Comments
3302.00	9.990	224.790	3270.52	-203.28	-235.58	-259.66	40°21'50.196"N	104°24'12.138"W	0.72	
3398.00	10.420	225.310	3365.00	-213.79	-247.60	-271.70	40°21'50.077"N	104°24'12.294"W	0.46	
3494.00	12.280	226.690	3459.12	-225.20	-260.71	-285.30	40°21'49.948"N	104°24'12.470"W	1.96	
3590.00	12.930	226.840	3552.80	-237.65	-275.05	-300.56	40°21'49.806"N	104°24'12.667"W	0.68	
3687.00	13.610	226.820	3647.21	-250.86	-290.29	-316.80	40°21'49.655"N	104°24'12.877"W	0.70	
3781.00	13.560	227.700	3738.58	-263.83	-305.27	-333.02	40°21'49.507"N	104°24'13.086"W	0.23	
3877.00	13.600	228.160	3831.90	-276.85	-320.38	-349.75	40°21'49.358"N	104°24'13.302"W	0.12	
3972.00	13.500	227.680	3924.26	-289.71	-335.29	-366.27	40°21'49.211"N	104°24'13.516"W	0.16	
4164.00	12.360	229.930	4111.39	-314.02	-363.61	-398.57	40°21'48.931"N	104°24'13.933"W	0.65	
4260.00	12.370	231.760	4205.16	-325.02	-376.59	-414.51	40°21'48.803"N	104°24'14.139"W	0.41	
4452.00	10.270	233.280	4393.41	-344.30	-399.55	-444.38	40°21'48.576"N	104°24'14.525"W	1.10	
4548.00	9.810	226.540	4487.95	-353.46	-410.30	-457.18	40°21'48.470"N	104°24'14.690"W	1.31	
4642.00	10.500	243.160	4580.49	-361.18	-419.67	-470.64	40°21'48.377"N	104°24'14.864"W	3.19	
4738.00	11.890	237.340	4674.67	-368.50	-428.96	-486.77	40°21'48.285"N	104°24'15.072"W	1.86	
4834.00	11.100	232.470	4768.74	-377.54	-439.93	-502.42	40°21'48.177"N	104°24'15.274"W	1.30	
4929.00	9.810	224.000	4862.17	-387.34	-451.32	-515.30	40°21'48.064"N	104°24'15.441"W	2.11	
5024.00	7.670	225.130	4956.06	-396.36	-461.62	-525.41	40°21'47.962"N	104°24'15.571"W	2.26	
5120.00	6.800	225.540	5051.30	-403.79	-470.12	-534.01	40°21'47.878"N	104°24'15.683"W	0.91	
5215.00	6.420	225.490	5145.67	-410.48	-477.78	-541.81	40°21'47.803"N	104°24'15.783"W	0.40	
5311.00	5.540	226.060	5241.14	-416.56	-484.76	-548.98	40°21'47.734"N	104°24'15.876"W	0.92	
5407.00	3.770	221.390	5336.82	-421.47	-490.34	-554.40	40°21'47.679"N	104°24'15.946"W	1.88	
5503.00	2.510	217.450	5432.68	-425.08	-494.38	-557.77	40°21'47.639"N	104°24'15.989"W	1.33	
5598.00	0.520	278.760	5527.64	-426.45	-495.96	-559.46	40°21'47.623"N	104°24'16.011"W	2.43	
5789.00	0.730	273.220	5718.63	-426.01	-495.76	-561.53	40°21'47.625"N	104°24'16.038"W	0.11	
5883.00	6.950	349.690	5812.39	-420.22	-490.13	-563.15	40°21'47.681"N	104°24'16.059"W	7.25	
5930.00	13.090	346.600	5858.65	-412.09	-482.15	-564.89	40°21'47.760"N	104°24'16.081"W	13.11	
5978.00	19.820	350.080	5904.66	-398.55	-468.83	-567.55	40°21'47.891"N	104°24'16.116"W	14.16	
6025.00	25.290	357.960	5948.06	-380.57	-450.93	-569.29	40°21'48.068"N	104°24'16.138"W	13.27	
6074.00	29.160	0.290	5991.62	-358.28	-428.52	-569.60	40°21'48.289"N	104°24'16.142"W	8.19	
6121.00	33.960	3.260	6031.66	-333.98	-403.95	-568.79	40°21'48.532"N	104°24'16.132"W	10.73	



# Actual Wellpath Report

STATE NORTH PLATTE 024-K21-26HNB AWP

Page 4 of 7



REFERENCE WELLPATH IDENTIFICATION			
Operator	BONANZA CREEK OIL COMPANY	Slot	SLOT#08 STATE NORTH PLATTE 024-K21-26HNB (519'FSL & 2382'FEL,SEC.26)
Area	COLORADO	Well	STATE NORTH PLATTE 024-K21-26HNB
Field	WELD COUNTY	Wellbore	STATE NORTH PLATTE 024-K21-26HNB AWP
Facility	SEC.26-T5N-R63W		

WELLPATH DATA (117 stations)										
MD [ft]	Inclination [°]	Azimuth [°]	TVD [ft]	Vert Sect [ft]	North [ft]	East [ft]	Latitude	Longitude	DLS [°/100ft]	Comments
6170.00	39.360	3.360	6070.96	-305.19	-374.75	-567.10	40°21'48.821"N	104°24'16.110"W	11.02	
6217.00	42.610	2.400	6106.43	-274.80	-343.97	-565.56	40°21'49.125"N	104°24'16.090"W	7.04	
6265.00	44.300	5.370	6141.28	-242.37	-311.04	-563.31	40°21'49.450"N	104°24'16.061"W	5.52	
6312.00	48.240	5.520	6173.76	-209.18	-277.24	-560.09	40°21'49.784"N	104°24'16.020"W	8.39	
6358.00	52.360	2.970	6203.14	-174.45	-241.96	-557.50	40°21'50.133"N	104°24'15.986"W	9.92	
6405.00	57.680	1.580	6230.08	-136.44	-203.49	-555.98	40°21'50.513"N	104°24'15.966"W	11.58	
6454.00	62.160	1.380	6254.63	-94.48	-161.11	-554.89	40°21'50.932"N	104°24'15.952"W	9.15	
6500.00	68.610	0.610	6273.78	-53.07	-119.32	-554.17	40°21'51.345"N	104°24'15.943"W	14.10	
6547.00	75.070	359.110	6288.42	-8.73	-74.69	-554.29	40°21'51.786"N	104°24'15.945"W	14.07	
6593.00	77.040	359.540	6299.51	35.65	-30.05	-554.82	40°21'52.227"N	104°24'15.951"W	4.38	
6643.00	83.560	359.370	6307.93	84.62	19.20	-555.28	40°21'52.714"N	104°24'15.958"W	13.04	
6690.00	87.350	359.410	6311.65	131.19	66.05	-555.78	40°21'53.177"N	104°24'15.964"W	8.06	
6731.00	89.520	0.810	6312.77	171.88	107.03	-555.70	40°21'53.582"N	104°24'15.963"W	6.30	
6802.00	90.070	1.700	6313.02	242.18	178.01	-554.15	40°21'54.283"N	104°24'15.943"W	1.47	
6897.00	91.060	0.320	6312.09	336.30	272.99	-552.48	40°21'55.222"N	104°24'15.921"W	1.79	
6993.00	91.080	358.230	6310.29	431.74	368.96	-553.69	40°21'56.170"N	104°24'15.937"W	2.18	
7089.00	89.970	3.930	6309.41	526.79	464.89	-551.88	40°21'57.118"N	104°24'15.914"W	6.05	
7184.00	90.970	3.760	6308.63	620.16	559.68	-545.51	40°21'58.054"N	104°24'15.831"W	1.07	
7280.00	89.570	3.380	6308.18	714.59	655.49	-539.53	40°21'59.001"N	104°24'15.754"W	1.51	
7376.00	88.360	4.610	6309.92	808.88	751.23	-532.85	40°21'59.947"N	104°24'15.668"W	1.80	
7471.00	89.250	1.190	6311.90	902.49	846.08	-528.04	40°22'00.885"N	104°24'15.606"W	3.72	
7567.00	89.560	1.380	6312.89	997.54	942.05	-525.89	40°22'01.833"N	104°24'15.578"W	0.38	
7663.00	89.690	1.670	6313.52	1092.53	1038.01	-523.33	40°22'02.781"N	104°24'15.545"W	0.33	
7758.00	90.410	1.200	6313.44	1186.56	1132.98	-520.96	40°22'03.720"N	104°24'15.514"W	0.91	
7852.00	88.550	359.640	6314.29	1279.80	1226.97	-520.27	40°22'04.648"N	104°24'15.505"W	2.58	
7948.00	89.260	359.590	6316.13	1375.19	1322.95	-520.91	40°22'05.597"N	104°24'15.514"W	0.74	
8042.00	89.490	359.100	6317.15	1468.65	1416.93	-521.99	40°22'06.526"N	104°24'15.528"W	0.58	
8137.00	90.570	1.670	6317.10	1562.89	1511.92	-521.35	40°22'07.464"N	104°24'15.519"W	2.93	
8232.00	87.980	358.710	6318.30	1657.17	1606.90	-521.03	40°22'08.403"N	104°24'15.515"W	4.14	
8327.00	88.640	358.310	6321.11	1751.72	1701.82	-523.50	40°22'09.341"N	104°24'15.547"W	0.81	



# Actual Wellpath Report

STATE NORTH PLATTE 024-K21-26HNB AWP

Page 5 of 7



REFERENCE WELLPATH IDENTIFICATION			
Operator	BONANZA CREEK OIL COMPANY	Slot	SLOT#08 STATE NORTH PLATTE 024-K21-26HNB (519'FSL & 2382'FEL,SEC.26)
Area	COLORADO	Well	STATE NORTH PLATTE 024-K21-26HNB
Field	WELD COUNTY	Wellbore	STATE NORTH PLATTE 024-K21-26HNB AWP
Facility	SEC.26-T5N-R63W		

WELLPATH DATA (117 stations)										
MD [ft]	Inclination [°]	Azimuth [°]	TVD [ft]	Vert Sect [ft]	North [ft]	East [ft]	Latitude	Longitude	DLS [°/100ft]	Comments
8423.00	88.470	0.320	6323.53	1847.14	1797.78	-524.65	40°22'10.289"N	104°24'15.562"W	2.10	
8519.00	90.030	2.190	6324.78	1942.18	1893.74	-522.55	40°22'11.237"N	104°24'15.535"W	2.54	
8615.00	90.720	1.140	6324.16	2037.14	1989.70	-519.76	40°22'12.186"N	104°24'15.499"W	1.31	
8710.00	90.750	358.800	6322.94	2131.47	2084.68	-519.81	40°22'13.124"N	104°24'15.500"W	2.46	
8806.00	89.290	358.340	6322.90	2227.05	2180.65	-522.20	40°22'14.072"N	104°24'15.531"W	1.59	
8900.00	90.030	358.010	6323.46	2320.69	2274.60	-525.20	40°22'15.001"N	104°24'15.569"W	0.86	
8995.00	90.220	357.440	6323.25	2415.40	2369.52	-528.97	40°22'15.939"N	104°24'15.618"W	0.63	
9090.00	89.630	359.900	6323.38	2509.96	2464.49	-531.17	40°22'16.877"N	104°24'15.647"W	2.66	
9185.00	89.940	359.170	6323.74	2604.38	2559.49	-531.94	40°22'17.816"N	104°24'15.657"W	0.83	
9280.00	89.940	1.690	6323.83	2698.63	2654.47	-531.23	40°22'18.755"N	104°24'15.647"W	2.65	
9374.00	90.490	1.010	6323.48	2791.68	2748.45	-529.02	40°22'19.683"N	104°24'15.619"W	0.93	
9469.00	90.890	1.590	6322.34	2885.73	2843.42	-526.86	40°22'20.622"N	104°24'15.591"W	0.74	
9563.00	89.310	2.470	6322.17	2978.62	2937.35	-523.53	40°22'21.550"N	104°24'15.548"W	1.92	
9659.00	89.510	2.080	6323.16	3073.41	3033.27	-519.72	40°22'22.498"N	104°24'15.499"W	0.46	
9755.00	89.480	2.580	6324.01	3168.20	3129.19	-515.82	40°22'23.446"N	104°24'15.448"W	0.52	
9850.00	89.100	0.850	6325.19	3262.15	3224.13	-512.97	40°22'24.384"N	104°24'15.412"W	1.86	
9946.00	88.890	0.850	6326.87	3357.28	3320.11	-511.55	40°22'25.332"N	104°24'15.393"W	0.22	
10042.00	89.060	0.670	6328.59	3452.44	3416.08	-510.28	40°22'26.281"N	104°24'15.377"W	0.26	
10136.00	89.690	0.850	6329.61	3545.62	3510.07	-509.03	40°22'27.209"N	104°24'15.361"W	0.70	
10232.00	90.220	0.490	6329.69	3640.81	3606.06	-507.91	40°22'28.158"N	104°24'15.346"W	0.67	
10328.00	90.830	0.570	6328.81	3736.02	3702.05	-507.02	40°22'29.106"N	104°24'15.335"W	0.64	
10424.00	90.490	359.580	6327.70	3831.33	3798.05	-506.89	40°22'30.055"N	104°24'15.333"W	1.09	
10519.00	89.690	0.160	6327.55	3925.69	3893.05	-507.11	40°22'30.994"N	104°24'15.336"W	1.04	
10614.00	88.890	0.040	6328.73	4020.00	3988.04	-506.94	40°22'31.932"N	104°24'15.334"W	0.85	
10710.00	89.600	359.780	6330.00	4115.33	4084.03	-507.09	40°22'32.881"N	104°24'15.336"W	0.79	
10776.00	89.970	0.280	6330.24	4180.87	4150.03	-507.06	40°22'33.533"N	104°24'15.336"W	0.94	Last BHI Survey Taken
10830.00	89.970	0.280	6330.27	4234.46	4204.03	-506.80	40°22'34.067"N	104°24'15.332"W	0.00	Projection to Bit



# Actual Wellpath Report

## STATE NORTH PLATTE 024-K21-26HNB AWP

Page 6 of 7



### REFERENCE WELLPATH IDENTIFICATION

Operator	BONANZA CREEK OIL COMPANY	Slot	SLOT#08 STATE NORTH PLATTE 024-K21-26HNB (519'FSL & 2382'FEL,SEC.26)
Area	COLORADO	Well	STATE NORTH PLATTE 024-K21-26HNB
Field	WELD COUNTY	Wellbore	STATE NORTH PLATTE 024-K21-26HNB AWB
Facility	SEC.26-T5N-R63W		

### HOLE & CASING SECTIONS -

Ref Wellbore: STATE NORTH PLATTE 024-K21-26HNB AWB Ref Wellpath: STATE NORTH PLATTE 024-K21-26HNB AWP

String/Diameter	Start MD [ft]	End MD [ft]	Interval [ft]	Start TVD [ft]	End TVD [ft]	Start N/S [ft]	Start E/W [ft]	End N/S [ft]	End E/W [ft]
13.5in Open Hole	0.00	437.00	437.00	0.00	437.00	0.00	0.00	-0.57	-1.62
9.625in Casing Intermediate	17.00	437.00	420.00	17.00	437.00	0.00	0.00	-0.57	-1.62
8.5in Open Hole	437.00	6731.00	6294.00	437.00	6312.77	-0.57	-1.62	107.03	-555.70
7in Casing	17.00	6731.00	6714.00	17.00	6312.77	0.00	0.00	107.03	-555.70
6.125in Open Hole	6731.00	10830.00	4099.00	6312.77	6330.27	107.03	-555.70	4204.03	-506.80

### TARGETS

Name	MD [ft]	TVD [ft]	North [ft]	East [ft]	Grid East [US ft]	Grid North [US ft]	Latitude	Longitude	Shape
STATE NORTH PLATTE F-J-26HNB SECTION 26		-15.00	4244.28	-1830.53	3303950.84	1381774.54	40°22'34.464"N	104°24'32.436"W	polygon
STATE NORTH PLATTE 024-K21-26HNB BHL Rev-2 From Plat (470'FNL & 2285'FWL,SEC.26)		6321.00	4218.72	-501.52	3305280.01	1381765.42	40°22'34.212"N	104°24'15.264"W	point
STATE NORTH PLATTE 024-K21-26HNB BHL Rev-1 From Plat (470'FNL & 2285'FWL,SEC.26)		6327.00	4218.72	-501.52	3305280.01	1381765.42	40°22'34.212"N	104°24'15.264"W	point
STATE NORTH PLATTE F-J-26HNB HARDLINE (460' SETBACKS)		6337.00	4244.28	-1830.53	3303950.84	1381774.54	40°22'34.464"N	104°24'32.436"W	polygon
Ex.STATE #1-26 (500' Radius)		7060.00	1490.49	1726.79	3307541.81	1379065.10	40°22'07.252"N	104°23'46.475"W	circle

### WELLPATH COMPOSITION -

Ref Wellbore: STATE NORTH PLATTE 024-K21-26HNB AWB Ref Wellpath: STATE NORTH PLATTE 024-K21-26HNB AWP

Start MD [ft]	End MD [ft]	Positional Uncertainty Model	Log Name/Comment	Wellbore
0.00	6731.00	NaviTrak (MagCorr)	BHI/Navitrak MWD 8.75" Hole <17'-6731>	STATE NORTH PLATTE 024-K21-26HNB AWB
6731.00	10776.00	NaviTrak (MagCorr)	BHI/Navitrak MWD 6.125" Hole <6802'-10776>	STATE NORTH PLATTE 024-K21-26HNB AWB
10776.00	10830.00	Blind Drilling (std)	Projection to bit	STATE NORTH PLATTE 024-K21-26HNB AWB



# Actual Wellpath Report

STATE NORTH PLATTE 024-K21-26HNB AWP

Page 7 of 7



REFERENCE WELLPATH IDENTIFICATION			
Operator	BONANZA CREEK OIL COMPANY	Slot	SLOT#08 STATE NORTH PLATTE 024-K21-26HNB (519'FSL & 2382'FEL,SEC.26)
Area	COLORADO	Well	STATE NORTH PLATTE 024-K21-26HNB
Field	WELD COUNTY	Wellbore	STATE NORTH PLATTE 024-K21-26HNB AWP
Facility	SEC.26-T5N-R63W		

WELLPATH COMMENTS				
MD [ft]	Inclination [°]	Azimuth [°]	TVD [ft]	Comment
0.00	0.000	237.570	0.00	Tie on Point
17.00	0.000	237.570	17.00	First BHI Survey Taken
10776.00	89.970	0.280	6330.24	Last BHI Survey Taken
10830.00	89.970	0.280	6330.27	Projection to Bit