

1801 Broadway  
Suite 500  
Denver, Colorado 80202



Callie Fiddes  
Regulatory Technician  
Tel: 303.398.0550  
E-mail: cfiddes@gwogco.com

March 19, 2014

Colorado Oil and Gas Conservation Commission  
1120 Lincoln Street, Suite 801  
Denver, Colorado 80203

RE: **Proposed Wellbore Spacing Unit**  
**Kodak North** FD 25-039HN

Niobrara New Drill  
Township 6 North, Range 67 West, 6<sup>th</sup> P.M.  
Section 26  
Weld County, Colorado

Dear Director:

Great Western Operating Company, LLC is planning to drill the above captioned well in accordance with the provisions of COGCC Rule 318(l)e(2).

Great Western proposed wellbore spacing unit consists of:

- **N2N2 Sec 25 & N2NE, NENW Sec 26**

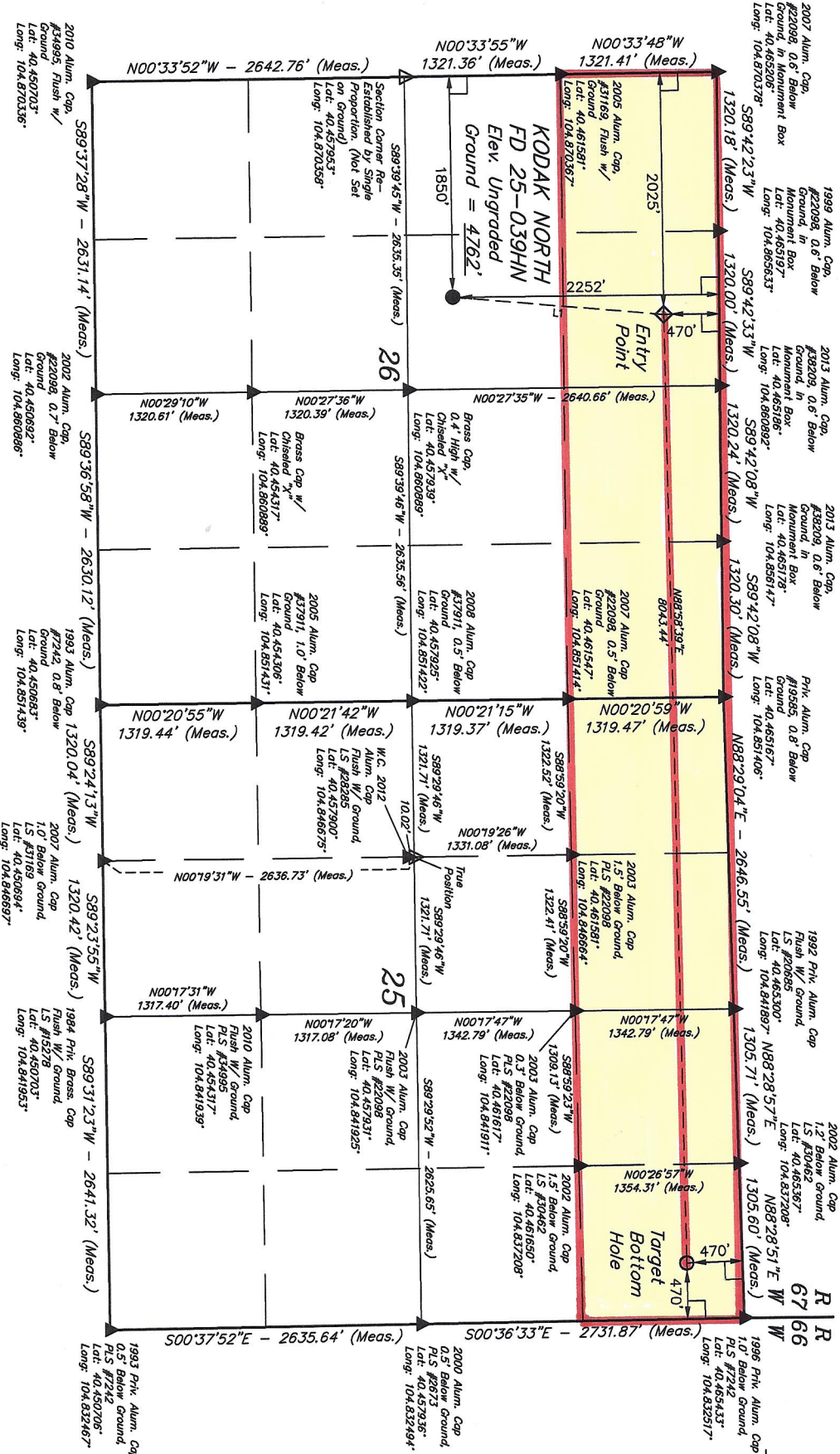
Great Western Operating Company, LLC respectfully requests that the COGCC review the enclosed map illustrating the proposed wellbore spacing unit.

Respectfully,

*Callie Fiddes*

Callie Fiddes  
Regulatory Technician  
Great Western Operating Company, LLC

# T6N, R67W, 6th P.M.



- LEGEND:**
- └─ = 90° SYMBOL
  - = PROPOSED WELL HEAD.
  - = TARGET BOTTOM HOLE.
  - ◇ = ENTRY POINT.
  - ▲ = SECTION CORNERS LOCATED.
  - △ = SECTION CORNERS RE-ESTABLISHED. (Not Set on Ground.)

NAD 83 (TARGET BOTTOM HOLE)	NAD 83 (SURFACE LOCATION)
LATITUDE = 40°27'50.83" (40.464119)	LATITUDE = 40°27'32.44" (40.459011)
LONGITUDE = 104°50'03.13" (104.834203)	LONGITUDE = 104°51'48.37" (104.863714)
NAD 27 (TARGET BOTTOM HOLE)	NAD 27 (SURFACE LOCATION)
LATITUDE = 40°27'50.90" (40.464139)	LATITUDE = 40°27'32.51" (40.459031)
LONGITUDE = 104°50'01.23" (104.833675)	LONGITUDE = 104°51'47.48" (104.863189)

PDOP = 1.3	SCALE = 1" = 1000'
UNTAH EN	85 SOUTH 2'
PARTY	D.N. C.M. G.
WEATHER	COOL

THIS IS TO C  
FIELD NOTES  
SUPERVISION  
BEST OF MY

GREAT WEST  
Well location, KOI  
located as shown  
Section 26, T6N,  
Colorado.

USGS COOPERATIVE  
DESIGNATION 'VERM  
NAVD 88 ELEVATION  
B

BASIS OF BR  
1996 Pk. Alum. Cap  
1.0' Below Ground  
P.L.S. #2873  
Lat. 40.457936°  
Long. 104.832494°

1992 Pk. Alum. Cap  
1.2' Below Ground  
P.L.S. #30462  
Lat. 40.463397°  
Long. 104.837309°

2002 Alum. Cap  
1.5' Below Ground  
P.L.S. #30462  
Lat. 40.461897°  
Long. 104.837208°

2003 Alum. Cap  
0.3' Below Ground  
P.L.S. #22098  
Lat. 40.461617°  
Long. 104.841911°

2003 Alum. Cap  
1.5' Below Ground  
P.L.S. #22098  
Lat. 40.457931°  
Long. 104.841925°

2003 Alum. Cap  
P.L.S. #34995  
Lat. 40.454317°  
Long. 104.841939°

2010 Alum. Cap  
P.L.S. #34995  
Lat. 40.454317°  
Long. 104.841939°

2007 Alum. Cap  
1.5' Below Ground  
P.L.S. #22098  
Lat. 40.461591°  
Long. 104.846664°

2001 Alum. Cap  
1.5' Below Ground  
P.L.S. #22098  
Lat. 40.461591°  
Long. 104.846664°

2007 Alum. Cap  
1.5' Below Ground  
P.L.S. #22098  
Lat. 40.461591°  
Long. 104.846664°

2007 Alum. Cap  
1.5' Below Ground  
P.L.S. #22098  
Lat. 40.461591°  
Long. 104.846664°

2007 Alum. Cap  
1.5' Below Ground  
P.L.S. #22098  
Lat. 40.461591°  
Long. 104.846664°

2007 Alum. Cap  
1.5' Below Ground  
P.L.S. #22098  
Lat. 40.461591°  
Long. 104.846664°

2007 Alum. Cap  
1.5' Below Ground  
P.L.S. #22098  
Lat. 40.461591°  
Long. 104.846664°

2007 Alum. Cap  
1.5' Below Ground  
P.L.S. #22098  
Lat. 40.461591°  
Long. 104.846664°

2007 Alum. Cap  
1.5' Below Ground  
P.L.S. #22098  
Lat. 40.461591°  
Long. 104.846664°

2007 Alum. Cap  
1.5' Below Ground  
P.L.S. #22098  
Lat. 40.461591°  
Long. 104.846664°

2007 Alum. Cap  
1.5' Below Ground  
P.L.S. #22098  
Lat. 40.461591°  
Long. 104.846664°

2007 Alum. Cap  
1.5' Below Ground  
P.L.S. #22098  
Lat. 40.461591°  
Long. 104.846664°

2007 Alum. Cap  
1.5' Below Ground  
P.L.S. #22098  
Lat. 40.461591°  
Long. 104.846664°

2007 Alum. Cap  
1.5' Below Ground  
P.L.S. #22098  
Lat. 40.461591°  
Long. 104.846664°

2007 Alum. Cap  
1.5' Below Ground  
P.L.S. #22098  
Lat. 40.461591°  
Long. 104.846664°

1000'