

T6N, R67W, 6th P.M.

**GREAT WESTERN OIL & GAS COMPANY**

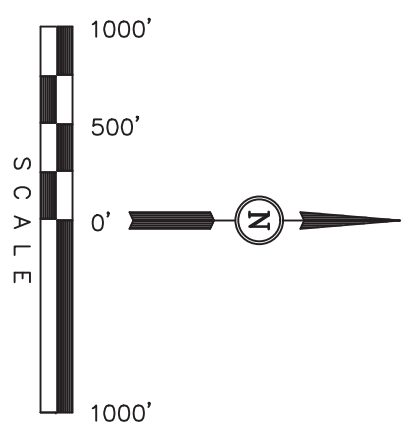
Well location, KODAK NORTH FD 25-039HN, located as shown in the SE 1/4 NW 1/4 of Section 26, T6N, R67W, 6th P.M., Weld County, Colorado.

**BASIS OF ELEVATION**

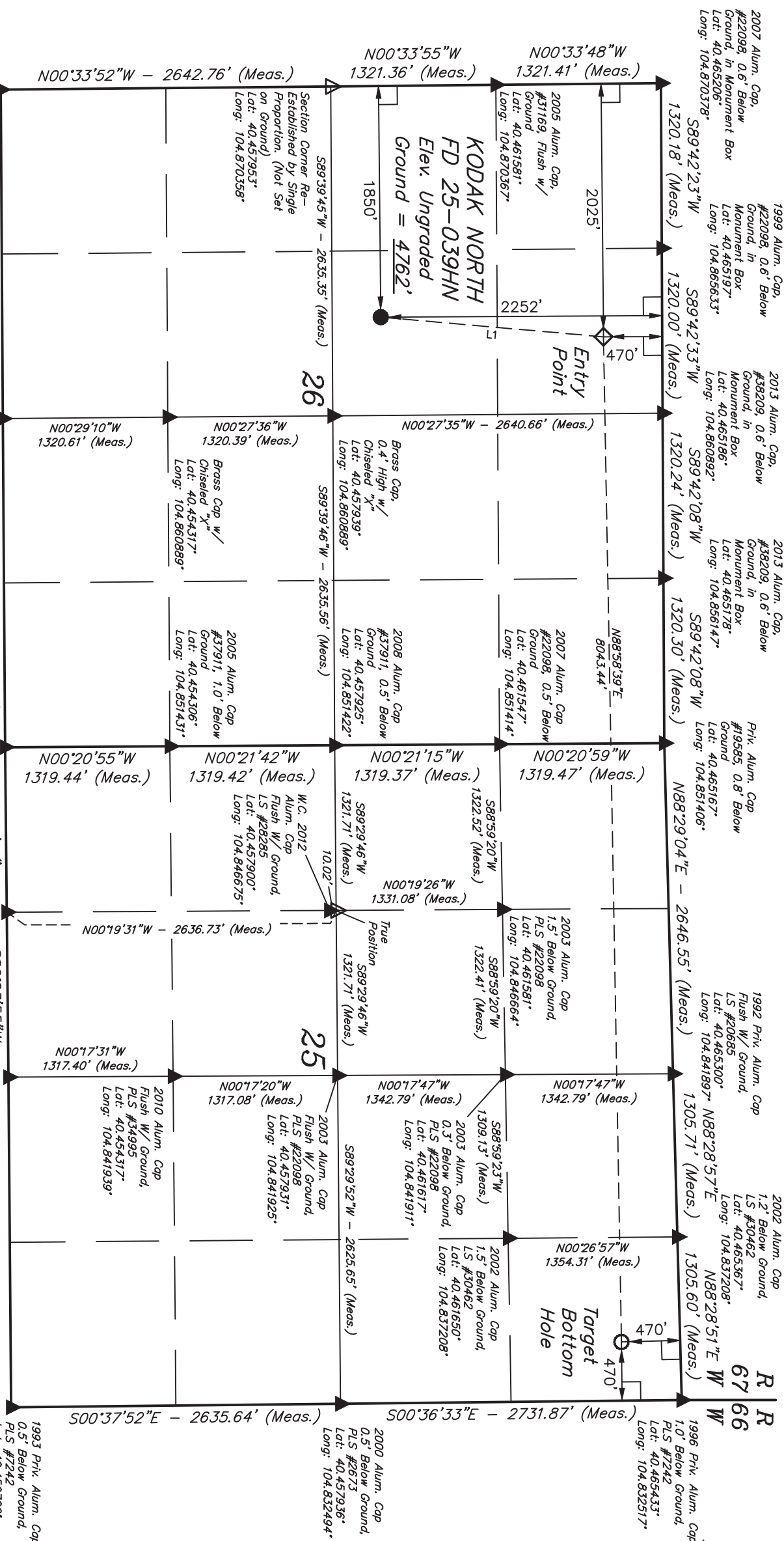
USGS COOPERATIVE BASE NETWORK CONTROL STATION, DESIGNATION 'VERMILYEA'. NGS DATA SHEET LISTS THE NAVD 88 ELEVATION AS BEING 5026 FEET

**BASIS OF BEARINGS**

BASIS OF BEARINGS IS A G.P.S. OBSERVATION.



LINE	DIRECTION	LENGTH
L1	N05°03'19"E	1789.93'



THIS IS TO CERTIFY THAT THE ABOVE IS A TRUE AND CORRECT COPY OF THE ORIGINAL SURVEY RECORD AS FILED IN THE PUBLIC RECORDS OF THE STATE OF COLORADO.



**UNTAH ENGINEERING & LAND SURVEYING**  
**85 SOUTH 200 EAST - VERNAL, UTAH 84078**  
 (435) 789-1017

- LEGEND:**
- └ = 90° SYMBOL
  - = PROPOSED WELL HEAD.
  - = TARGET BOTTOM HOLE.
  - ◇ = ENTRY POINT.
  - ◊ = SECTION CORNERS LOCATED.
  - △ = SECTION CORNERS RE-ESTABLISHED. (Not Set on Ground.)

NAD 83 (TARGET BOTTOM HOLE)		NAD 83 (ENTRY POINT)		NAD 83 (SURFACE LOCATION)	
LATITUDE = 40°27'50.83"	(40.464119)	LATITUDE = 40°27'50.04"	(40.463900)	LATITUDE = 40°27'32.44"	(40.459011)
LONGITUDE = 104°50'03.13"	(104.834203)	LONGITUDE = 104°51'47.15"	(104.863097)	LONGITUDE = 104°51'49.37"	(104.863714)
NAD 27 (TARGET BOTTOM HOLE)		NAD 27 (ENTRY POINT)		NAD 27 (SURFACE LOCATION)	
LATITUDE = 40°27'50.90"	(40.464139)	LATITUDE = 40°27'50.11"	(40.463919)	LATITUDE = 40°27'32.51"	(40.459031)
LONGITUDE = 104°50'01.23"	(104.833675)	LONGITUDE = 104°51'45.26"	(104.862572)	LONGITUDE = 104°51'47.48"	(104.863189)

SCALE	1" = 1000'	DATE SURVEYED:	10-21-13	DATE DRAWN:	10-30-13
PARTY	D.N. C.M. G.W. J.W.	REFERENCES	G.L.O. PLAT		
WEATHER	COOL	FILE	GREAT WESTERN OIL & GAS COMPANY		

PDOP = 1.3